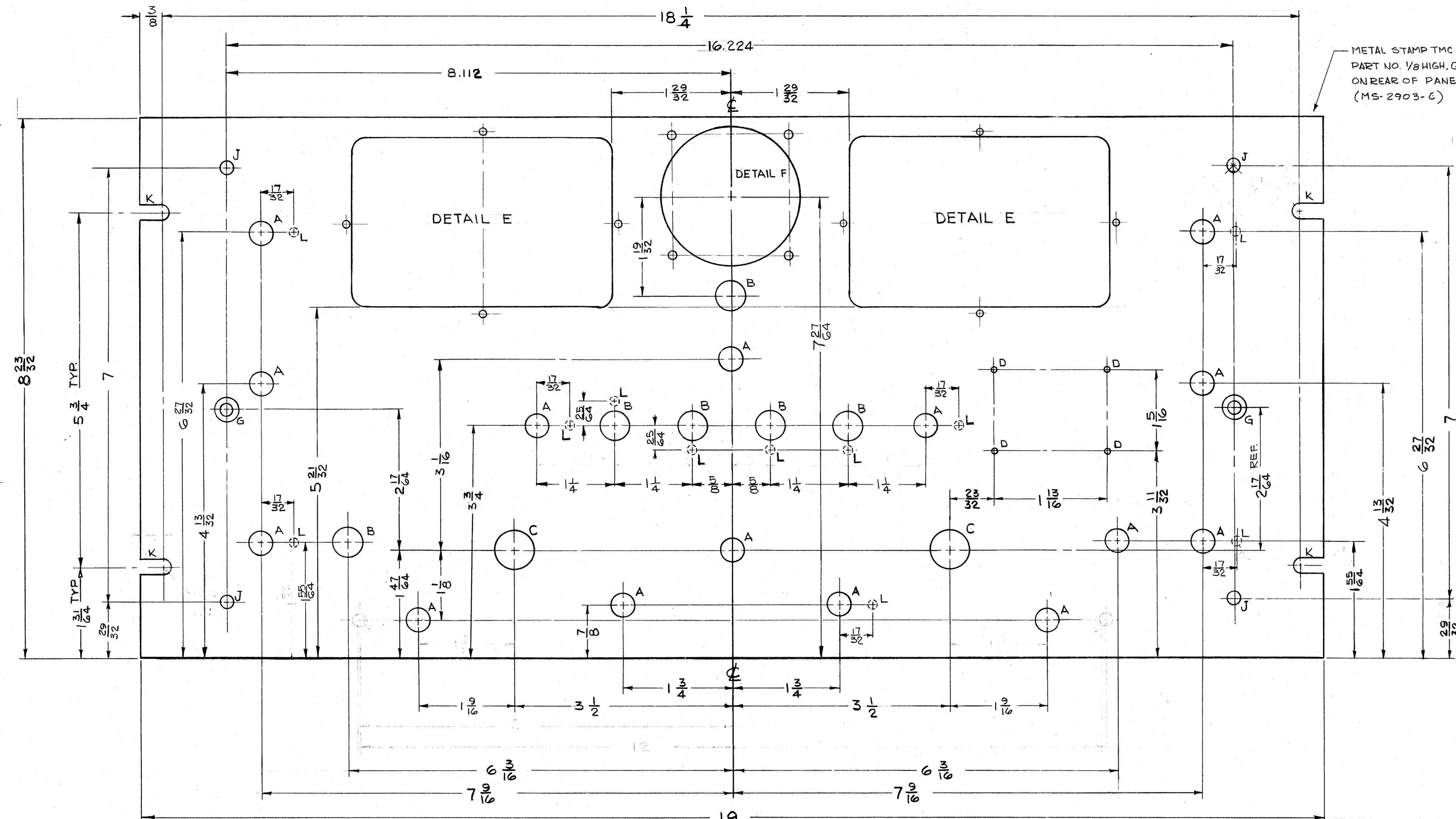
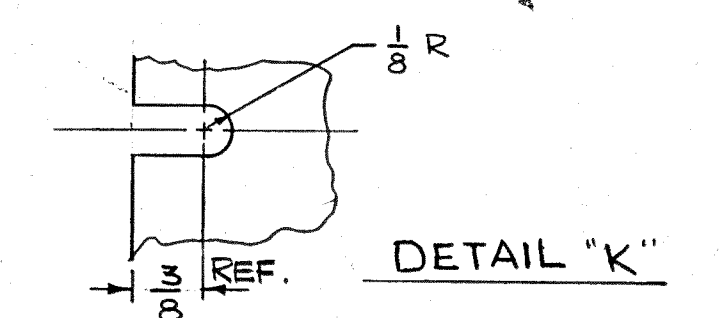
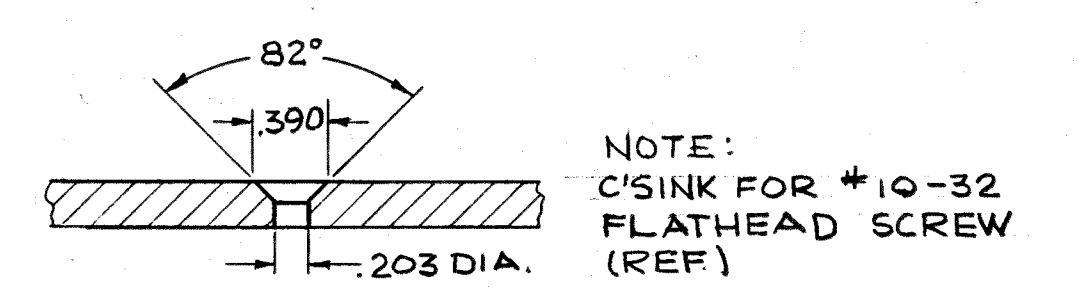
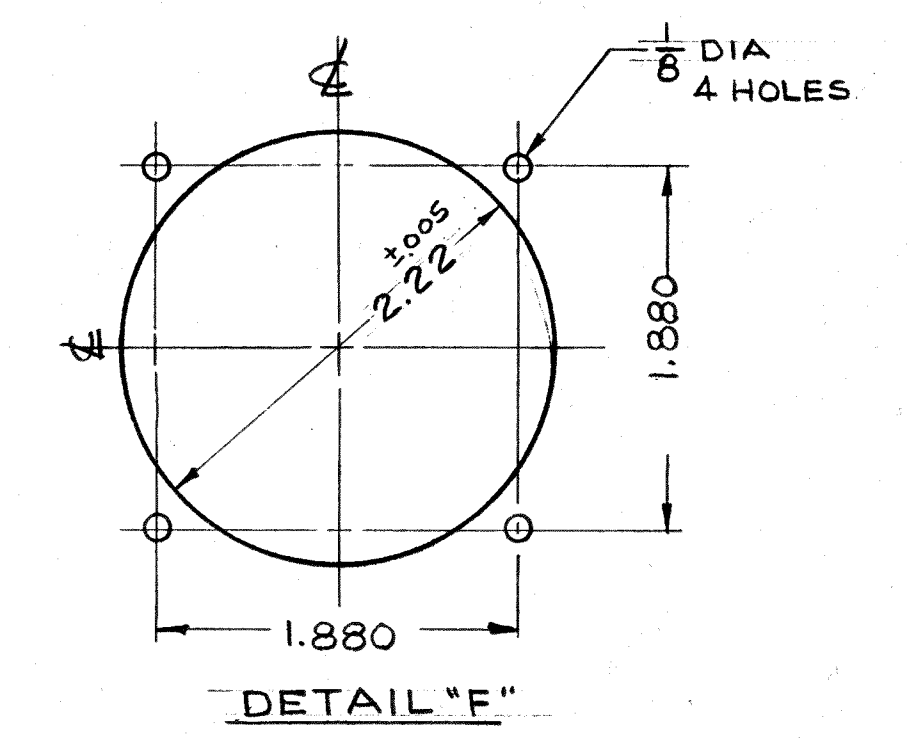
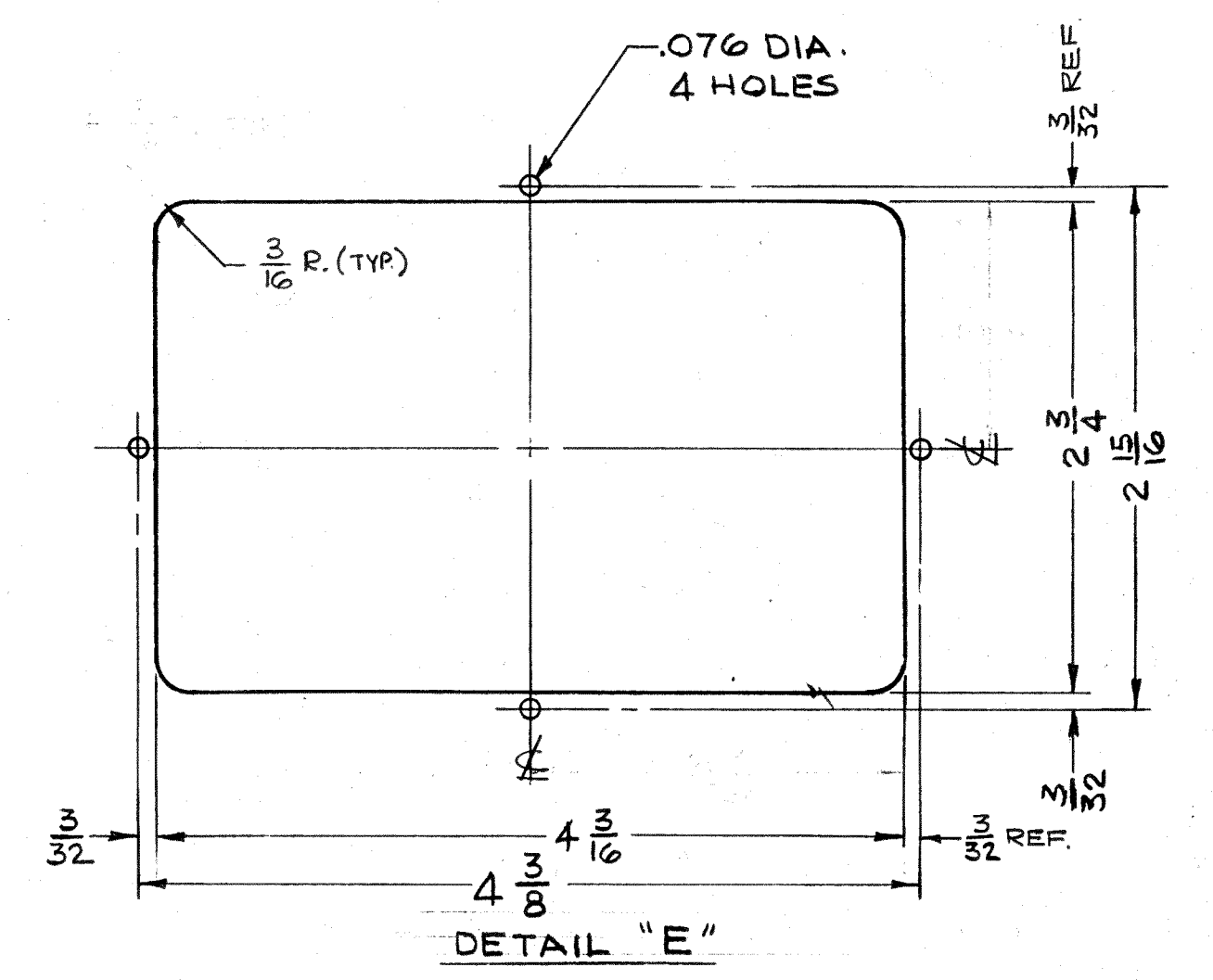


REVISIONS						
ZONE	SYM	DESCRIPTION	DATE	E.M.N. NO.	DRAFT	CHKD
E3	A	ON "E" DETAIL, 3/16 R. (TYP) ADDED	2-20-63	8336		
	B	10 "L" HOLES ADDED	2-25-63	8371		
A10	C	"L" HOLES, QTY WAS 10	3-17-63	8952		
CSE5	D	(2) "L" HOLES RELOCATED	4/1/63	10142		
H	E	DELETED "H" HOLES	2/19/64	10926 A.M.		



METAL STAMP TMC
PART NO. 1/8 HIGH, GOTHIC
ON REAR OF PANEL
(MS-2903-C)



LEGEND

HOLE	DESCRIPTION	REQ'D
A	3/8 DIA	15
B	31/64 DIA.	6
C	5/8 DIA.	2
D	#50(070)DR.	4
E	SEE DETAIL "E"	2
F	SEE DETAIL "F"	1
G	SEE DETAIL "G"	2
H	DELETED	
J	13/64 DIA	4
K	SEE DETAIL K	4
L	3/64 DIA. x 1/8 DEEP FROM REAR OF PANEL	11

MACHINING:

- LATERAL BOW OF PANEL MUST BE KEPT TO .031 TOLERANCE.
- MILL ALL EDGES
- HOLES MUST BE DRILLED.
- PANEL MUST BE FREE OF ALL MACHINING MARKS, GOUGES & SCRATCHES, IF NECESSARY SAND FRONT OF PANEL WITH NO.120 GRIT SANDPAPER.

FINISH:

- S404 YELLOW IRIDITE
- S114 ZINC CHROMATE PRIMER & S115 TMC SMOOTH GREY ENAMEL } ON FRONT & EDGES ONLY

UNLESS OTHERWISE SPECIFIED DIMENSIONS ARE IN INCHES AND INCLUDE CHEMICALLY APPLIED OR PLATED FINISHES	
DECIMALS	FRACTIONS
.1 ± .001	1/64
.01 ± .0005	± 0° 30'
.001 ± .0005	

NOTES

1	GPR-92	ASY. NO.
SCALE	FULL	CODE
THE CONTENTS OF THIS DRAWING ARE THE EXCLUSIVE PROPERTY OF THE TECHNICAL MATERIEL CORP. ITS UNAUTHORIZED USE OR REPRODUCTION IN WHOLE OR IN PART IS STRICTLY FORBIDDEN.		

REQ'D.	ITEM	PART NUMBER	DESCRIPTION	SYMBOL
STRUMER LIST OF MATERIAL				
MATERIAL		THE TECHNICAL MATERIEL CORP. MAMARONECK, NEW YORK		
3/16 ALUMINUM 2024-T4		PANEL FRONT MACHINING		
FINISH		TITLE		
SEE NOTE		MS-2903 E		
UNLESS OTHERWISE SPECIFIED DIMENSIONS ARE IN INCHES AND INCLUDE CHEMICALLY APPLIED OR PLATED FINISHES		DRAWN T. RAMIREZ DATE 1/17/63		
DECIMALS ± .001 FRACTIONS ± 1/64 ANGLES ± 0° 30'		CHECKED DATE 1-17-63		
TOLERANCES		DATE 1-25-63		
		MECH. DES. DATE 7-23-63		

MS-2903 E