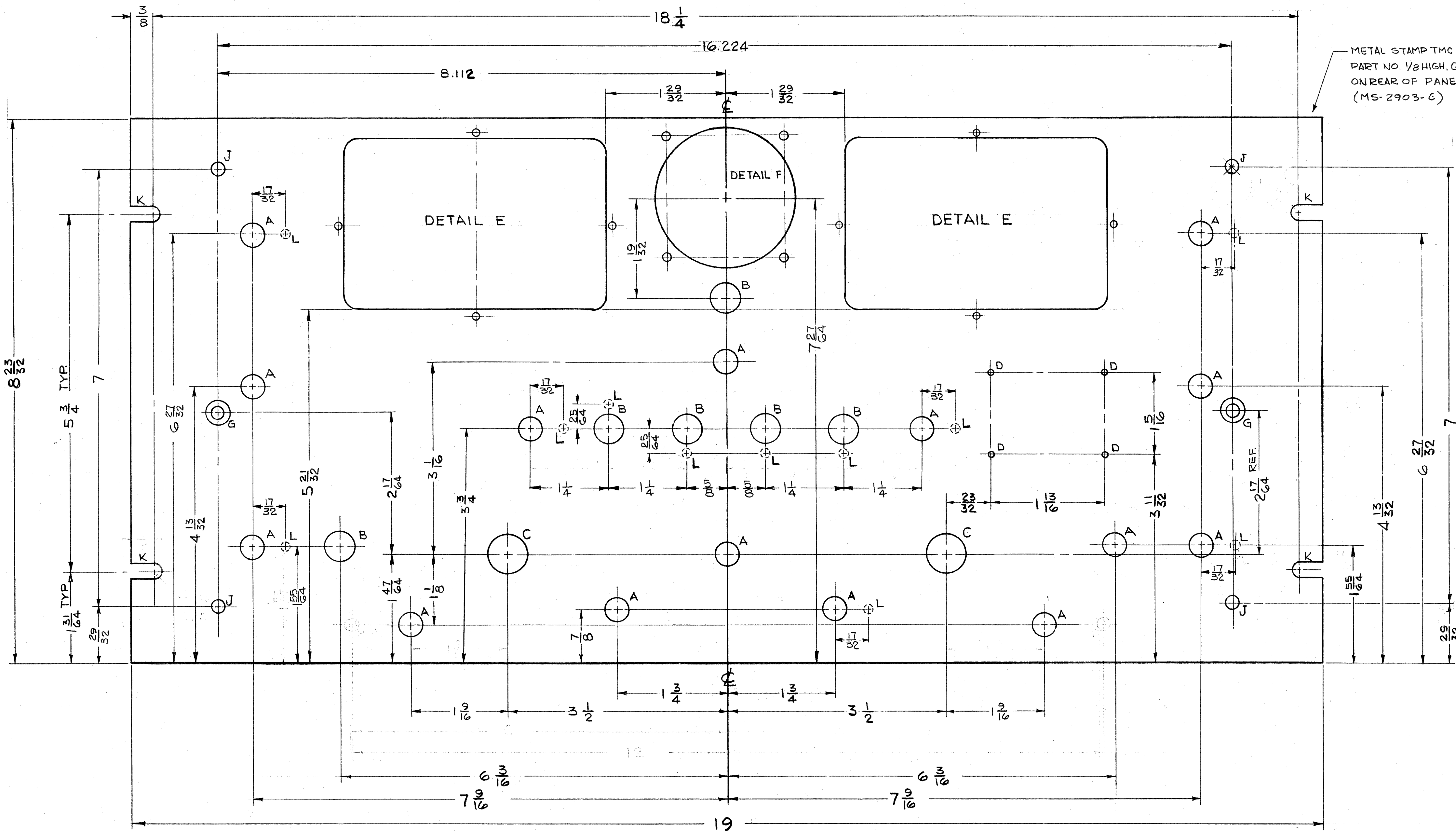
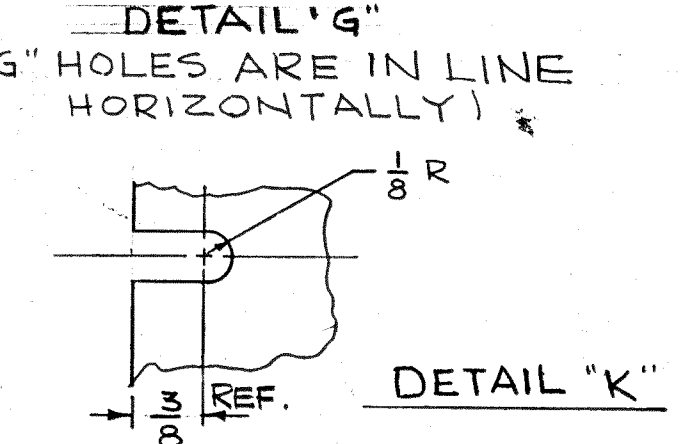
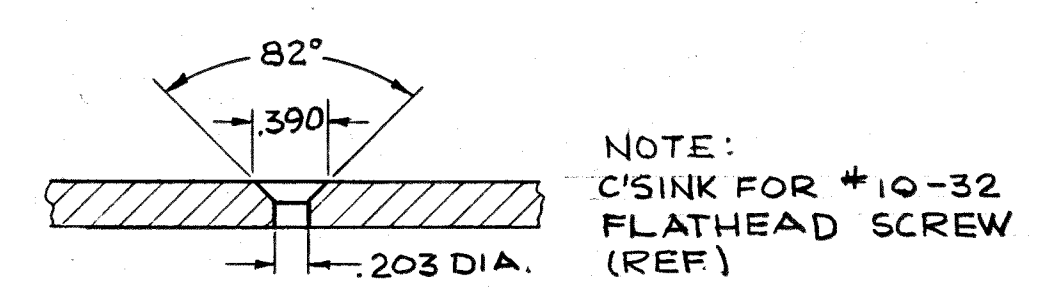
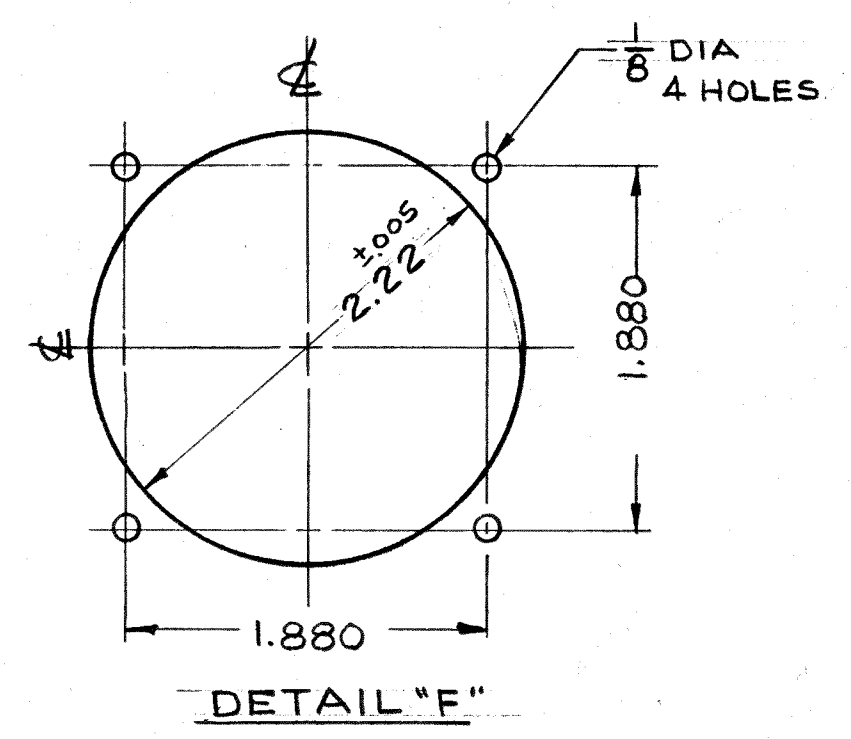
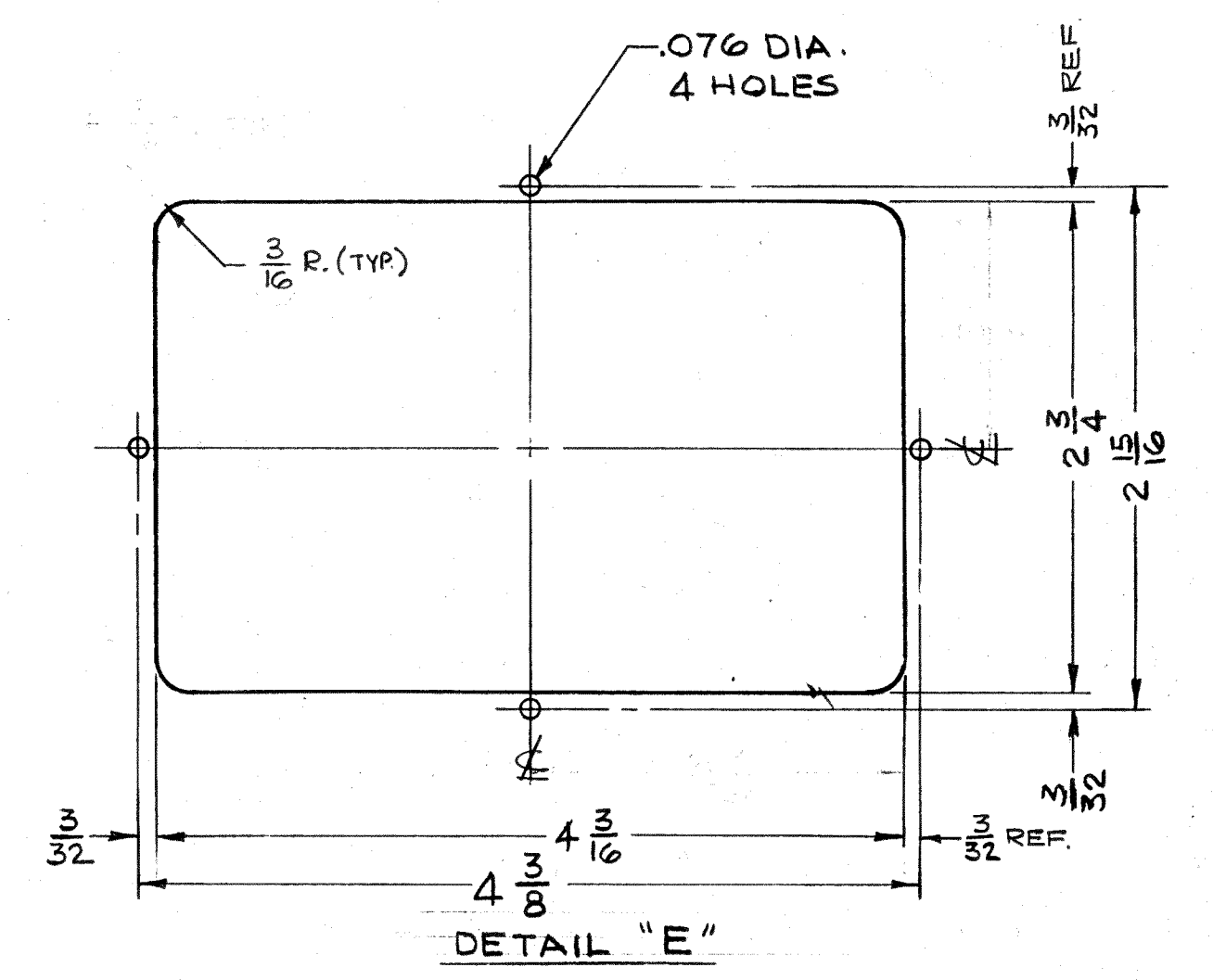


REVISIONS						
ZONE	SYM	DESCRIPTION	DATE	E.M.N. NO.	DRAFT	CHKD
E3	A	ON "E" DETAIL, 3/16 R. (TYP) ADDED	2-20-63	8336		
	B	10 "L" HOLES ADDED	2-25-63	8371		
A10	C	"L" HOLES, QTY WAS 10	3-17-63	8952		
CSE5	D	(2) "L" HOLES RELOCATED	4/1/63	10142		
H	E	DELETED "H" HOLES	2/19/64	10926 A.M.		



METAL STAMP TMC  
PART NO. 1/8 HIGH, GOTHIC  
ON REAR OF PANEL  
(MS-2903-C)



LEGEND

HOLE	DESCRIPTION	REQ'D
A	3/8 DIA	15
B	31/64 DIA.	6
C	5/8 DIA.	2
D	#50(070)DR.	4
E	SEE DETAIL "E"	2
F	SEE DETAIL "F"	1
G	SEE DETAIL "G"	2
H	DELETED	
J	15/64 DIA	4
K	SEE DETAIL K	4
L	3/64 DIA. x 1/8 DEEP FROM REAR OF PANEL	11

MACHINING:

- LATERAL BOW OF PANEL MUST BE KEPT TO .031 TOLERANCE.
- MILL ALL EDGES
- HOLES MUST BE DRILLED.
- PANEL MUST BE FREE OF ALL MACHINING MARKS, GOUGES & SCRATCHES, IF NECESSARY SAND FRONT OF PANEL WITH NO.120 GRIT SANDPAPER.

FINISH:

- S404 YELLOW IRIDITE
- S114 ZINC CHROMATE PRIMER & S115 TMC SMOOTH GREY ENAMEL } ON FRONT & EDGES ONLY

UNLESS OTHERWISE SPECIFIED DIMENSIONS ARE IN INCHES AND INCLUDE CHEMICALLY APPLIED OR PLATED FINISHES	
DECIMALS	FRACTIONS
.125 ± .001	1/64
.001 ± .0005	± 0° 30'

NOTES

1	GPR-92	ASY. NO.
SCALE	FULL	
THE CONTENTS OF THIS DRAWING ARE THE EXCLUSIVE PROPERTY OF THE TECHNICAL MATERIEL CORP. ITS UNAUTHORIZED USE OR REPRODUCTION IN WHOLE OR IN PART IS STRICTLY FORBIDDEN.		

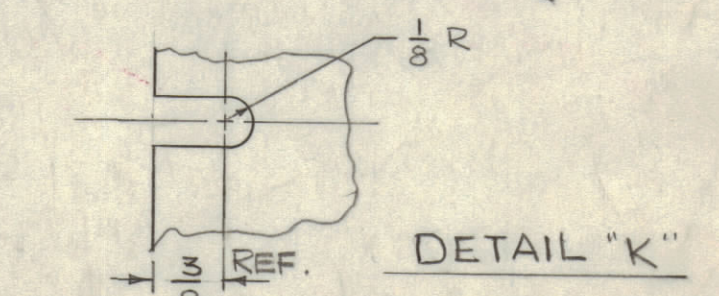
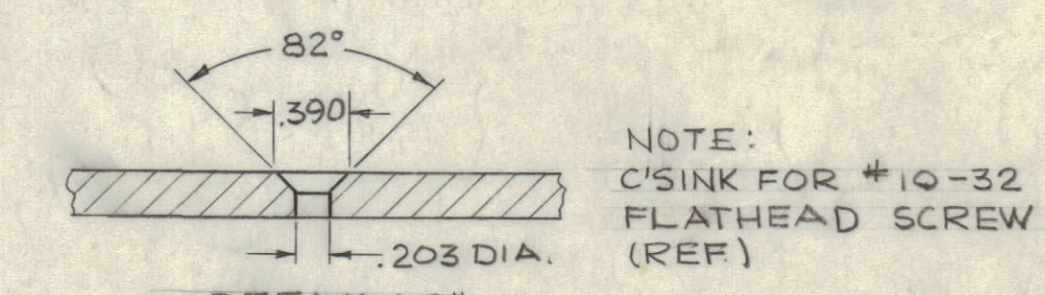
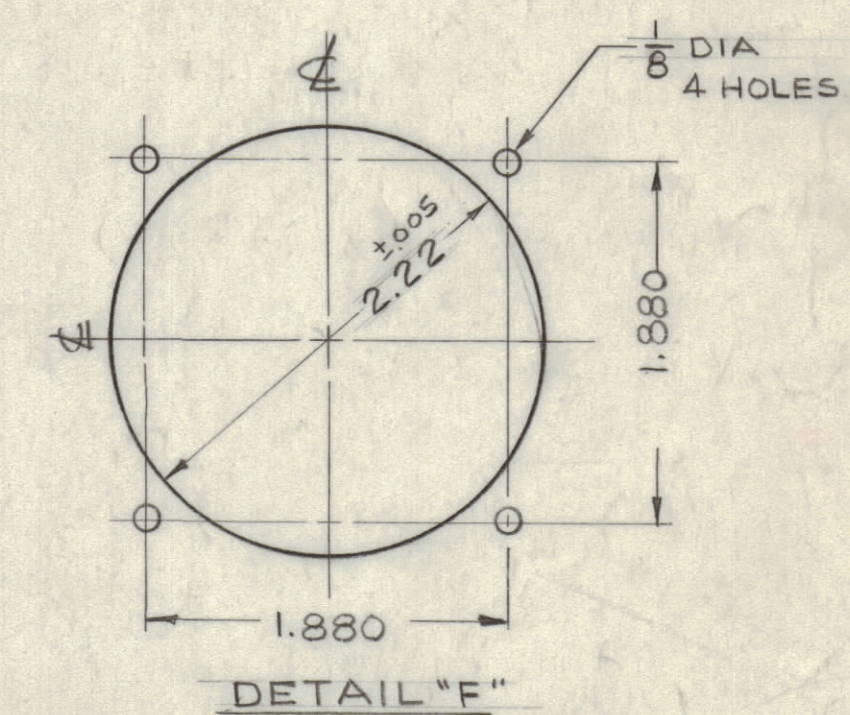
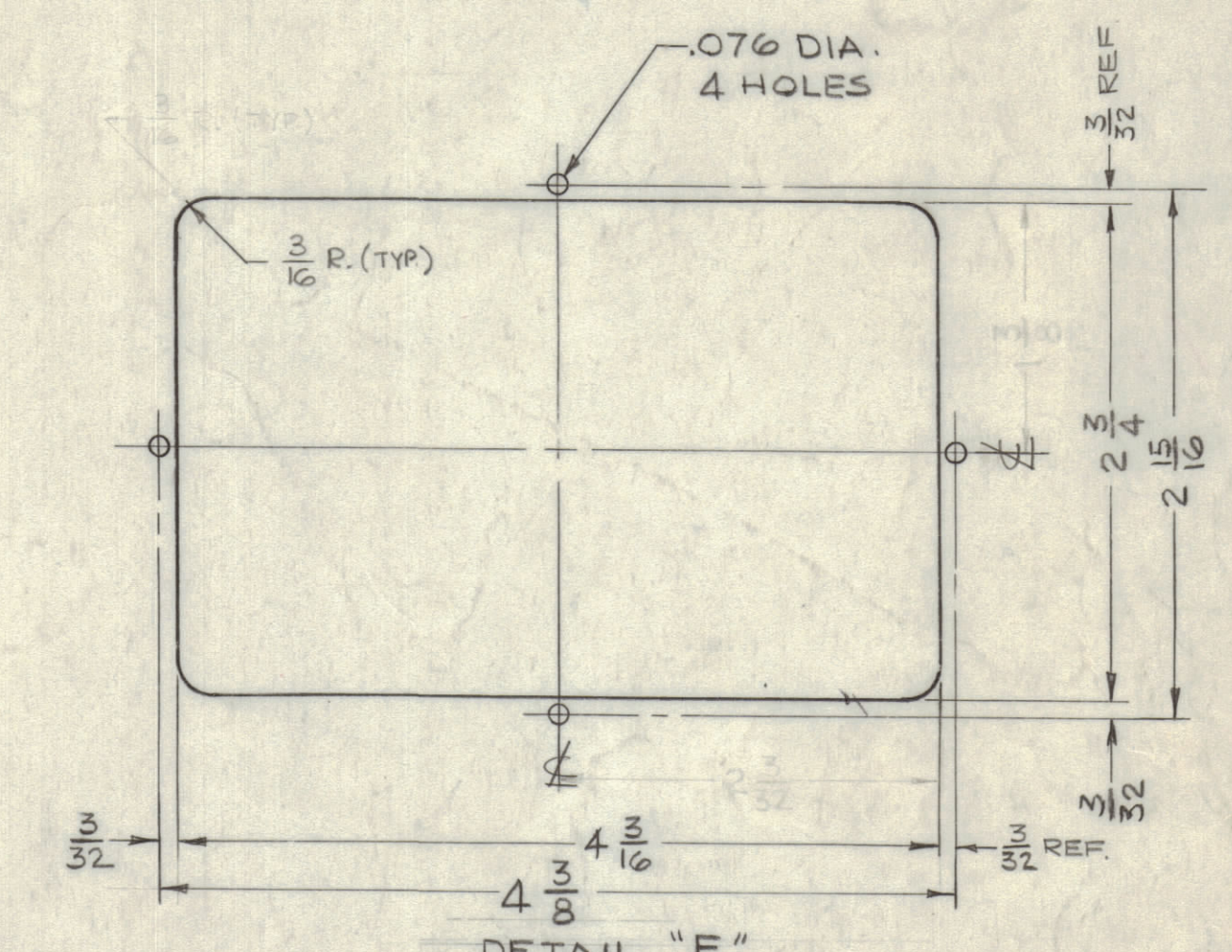
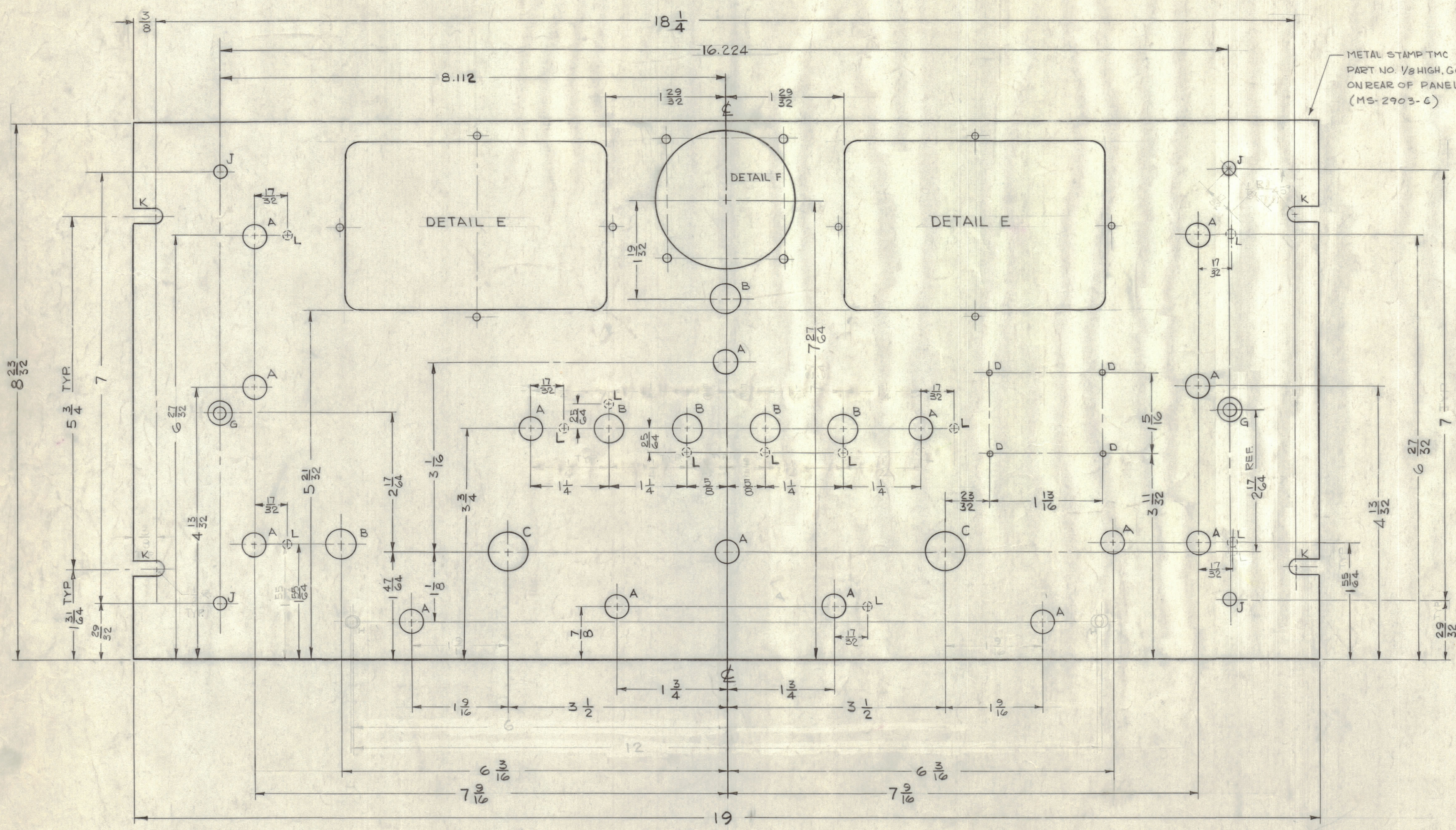
REQ'D.	ITEM	PART NUMBER	DESCRIPTION	SYMBOL
STRUMER LIST OF MATERIAL				
MATERIAL		3/16 ALUMINUM 2024-T4	THE TECHNICAL MATERIEL CORP. MAMARONECK, NEW YORK	
FINISH		SEE NOTE	TITLE PANEL FRONT MACHINING	
UNLESS OTHERWISE SPECIFIED DIMENSIONS ARE IN INCHES AND INCLUDE CHEMICALLY APPLIED OR PLATED FINISHES		DRAWN T. RAMIREZ	DATE 1-17-63	FINAL APPROVAL
DECIMALS ± .001		CHECKED	DATE 1-23-63	DATE
FRACTIONS ± 1/64		DATE	DATE	DATE
ANGLES ± 0° 30'		MECH. DES.	DATE	DATE
TOLERANCES ± .008			DATE	DATE
			DATE	DATE

MS-2903 E



ZONE		SYM	DESCRIPTION	DATE	E.M.N. NO.	DRAFT	CHKD	APPD
E3	A		ON "E" DETAIL, 3/16 R. (TYP) ADDED	1-20-63	8336			
	B		10 "L" HOLES ADDED	2-25-63	9371			
A10	C		"L" HOLES, QTY WAS 10	3-17-63	9952			
C5, E5	D		(2) "L" HOLES RELOCATED	4-14-63	10142			
H	E		DELETED "H" HOLES	7-19-63	10526	A.M.		

B	3/16 DIA	6
C	5/8 DIA	2
D	#50(070)DR.	4
E	SEE DETAIL "E"	2
F	SEE DETAIL "F"	1
G	SEE DETAIL "G"	2
H	DELETED	2
J	1 3/64 DIA	4
K	SEE DETAIL "K"	4



LEGEND

HOLE	DESCRIPTION	REQ'D
A	3/8 DIA	15
B	31/64 DIA.	6
C	5/8 DIA.	2
D	#50(070)DR.	4
E	SEE DETAIL "E"	2
F	SEE DETAIL "F"	1
G	SEE DETAIL "G"	2
H	DELETED	2
J	1 3/64 DIA	4
K	SEE DETAIL "K"	4
L	9/64 DIA X 1/8 DEEP FROM REAR OF PANEL	11

**MACHINING:**

- LATERAL BOW OF PANEL MUST BE KEPT TO .001 TOLERANCE.
- MILL ALL EDGES
- HOLES MUST BE DRILLED.
- PANEL MUST BE FREE OF ALL MACHINING MARKS, GOUGES & SCRATCHES, IF NECESSARY SAND FRONT OF PANEL WITH NO.120 GRIT SANDPAPER.

**FINISH:**

- S404 YELLOW IRIDITE
- S114 ZINC CHROMATE PRIMER & S115 TMC SMOOTH GREY ENAMEL } ON FRONT & EDGES ONLY

UNLESS OTHERWISE SPECIFIED DIMENSIONS ARE IN INCHES AND INCLUDE DIMENSIONAL TOLERANCES

DECIMALS	FRACTIONS
.XX ± .01	1/64
.XXX ± .005	ANGLES ± 0° 30'

THE CONTENTS OF THIS DRAWING ARE THE EXCLUSIVE PROPERTY OF THE TECHNICAL MATERIEL CORP. ITS UNAUTHORIZED USE OR REPRODUCTION IN WHOLE OR IN PART IS STRICTLY FORBIDDEN.

REQ'D.	ITEM	PART NUMBER	DESCRIPTION	SYMBOL
<b>STRUMER LIST OF MATERIAL</b>				
MATERIAL		3/16 ALUMINUM 2024-T4		
FINISH		SEE NOTE		
TITLE		PANEL, FRONT MACHINING		
DRAWN		DATE		
CHECKED		DATE		
ELECT. DES.		DATE		
MECH. DES.		DATE		
TOLERANCES		FRACTIONS		
.XX ± .01		1/64		
.XXX ± .005		ANGLES ± 0° 30'		

NOTES

MS-2903 E