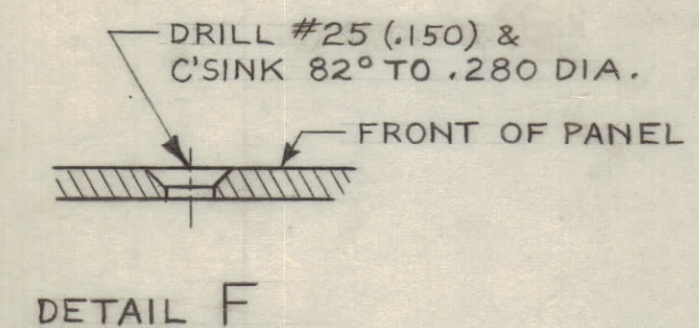
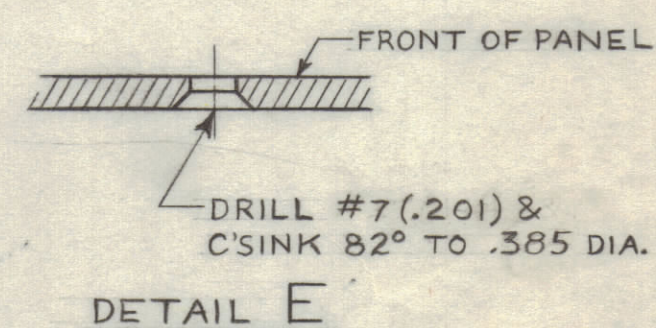
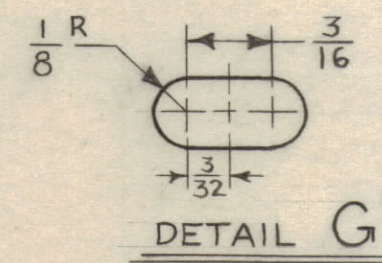
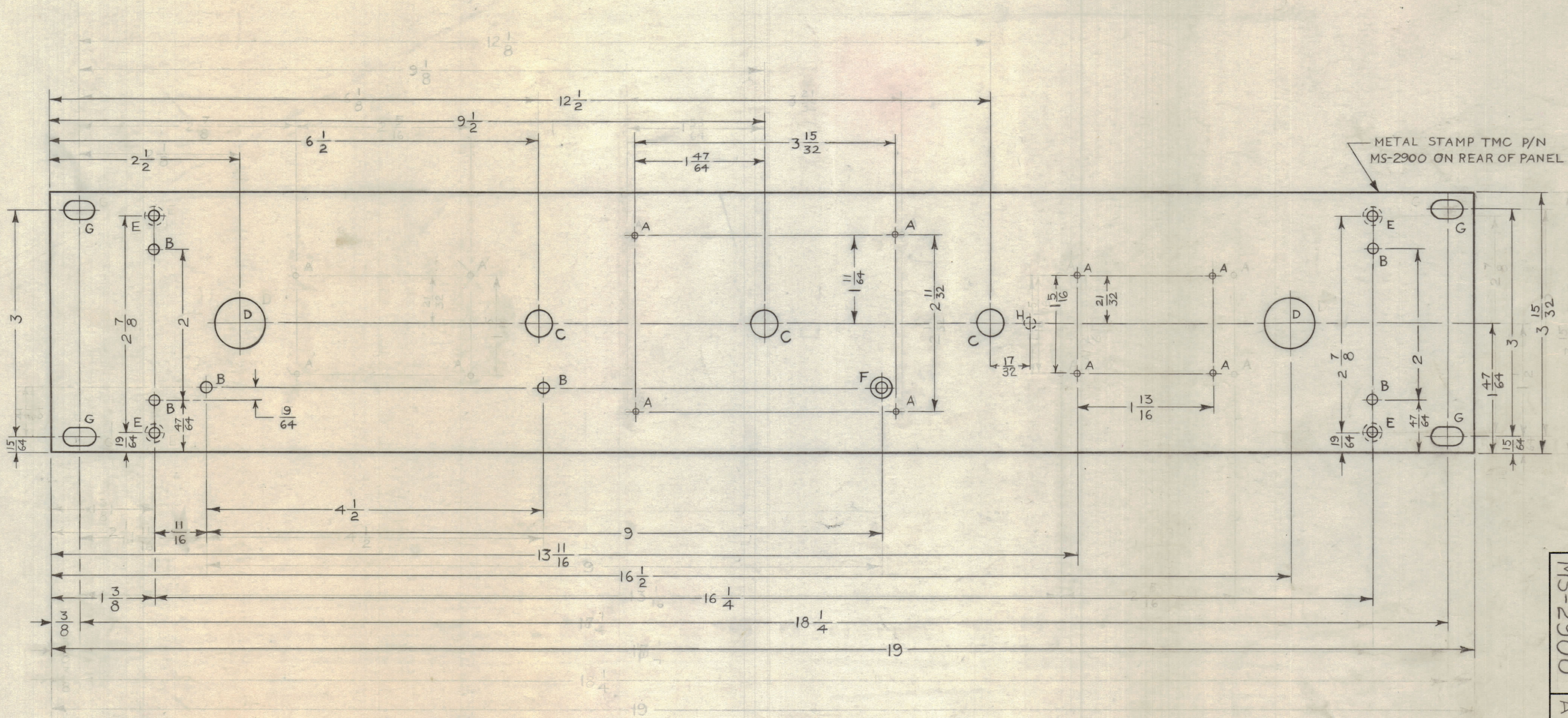


REVISIONS							
ZONE	SYM	DESCRIPTION	DATE	E.M.N. NO.	DRAFT	CHKD	APPD
F3, B7	A	ADDED (1)"H" HOLE	4-18-63	8871			



HOLE LEGEND		
LETTER	DESCRIPTION	REQD
A	#48 (.076)	8
B	#25 (.150)	6
C	25/64 DIA	3
D	11/16 DIA	2
E	SEE DETAIL	4
F	SEE DETAIL	1
G	SEE DETAIL	4
H	5/32 DIA., 1/8 DEEP FROM REAR OF PANEL	1

3) S115-TMC SMOOTH GREY ENAMEL (FRONT & EDGES ONLY).
 2) S114-ZINC CHROMATE PRIMER (FRONT & EDGE ONLY)
 1) S404-YELLOW IRIDITE

FINISH NOTES:

4) PANEL MUST BE FREE OF ALL MACHINING MARKS, GOUGES & SCRATCHES.
 3) HOLES MUST BE DRILLED.
 2) MILL ALL EDGES.
 1) LATERAL BOW OF PANEL TO BE WITHIN .031 TOLERANCE.

MACHINING NOTES:

NOTES

TRX-1	
Q'TY./UNIT	MODEL USED ON
SCALE 1:1	ASS'Y. NO.
CODE	

THE CONTENTS OF THIS DRAWING ARE THE EXCLUSIVE PROPERTY OF THE TECHNICAL MATERIEL CORP. ITS UNAUTHORIZED USE OR REPRODUCTION IN WHOLE OR IN PART IS STRICTLY FORBIDDEN.

REF: LD-1050

REQ'D.	ITEM	PART NUMBER	DESCRIPTION	SYMBOL
J. STRUMER LIST OF MATERIAL				
MATERIAL		3/16 THICK 2024-T3 ALUMINUM		
FINISH		SEE NOTE		
THE TECHNICAL MATERIEL CORP. MAMARONECK, NEW YORK		TITLE PANEL, FRONT, MACHINING		
DRAWN	DATE	FINAL APPROVAL	DATE	
CHECKED	DATE			
ELECT. DES.	DATE	MS-2900 A		
MECH. DES.	DATE	SHEET		
DECIMALS	FRACTIONS	TOLERANCES		
.X ± .05	± 1/64	ANGLES ± 0° 30'		
.XX ± .01				
.XXX ± .005				

MS-2900 A