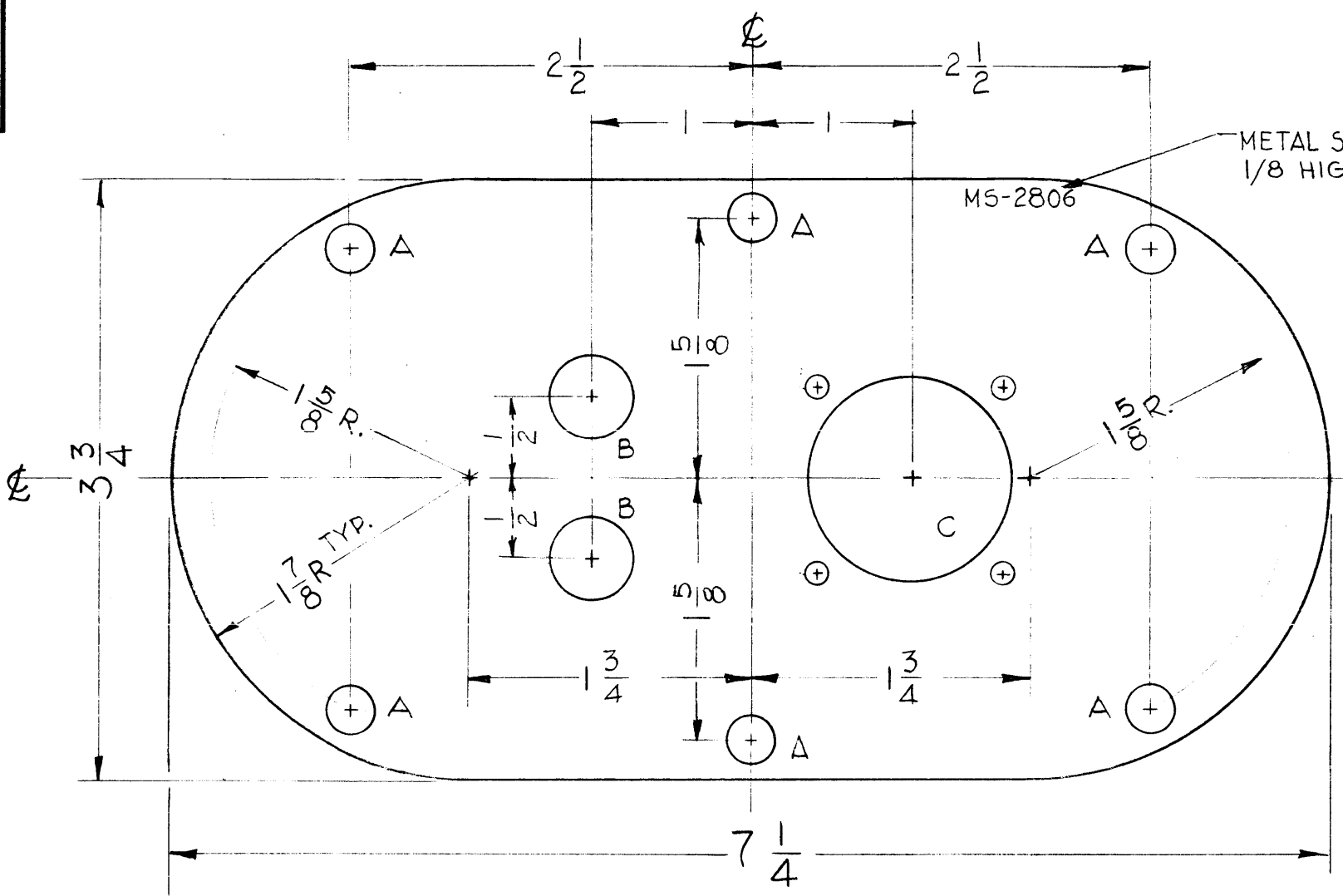


MS-2806

THE CONTENTS OF THIS DRAWING ARE THE EXCLUSIVE PROPERTY OF THE TECHNICAL MATERIEL CORP. ITS UNAUTHORIZED USE OR REPRODUCTION IN WHOLE OR IN PART IS STRICTLY FORBIDDEN.

MATERIAL CODE	MATERIAL	PRIME OR DIP	FINISH
S	STEEL 14 G.A.	S114 ZINC CHROM	5520 TMC RCAF BLUE GRAY TEXTURED VINYL
A	ALUMINUM 12 GA-5052-H32		5404-IRIDITE

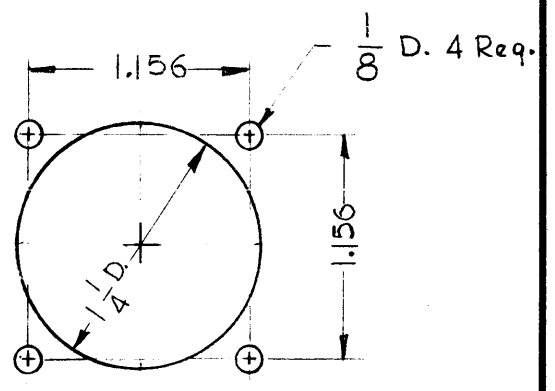
NOTE : OR PRIME AN PAINT TO CUSTOMERS SPEC.



METAL STAMP TMC PART No.
1/8 HIGH GOTHIC

THE TECHNICAL MATERIEL CORPORATION
 MAMARONECK, NEW YORK
 DRAWN BY: G.D.L. CHECKED BY: RLUZZO
 DATE: 1-5-62

LEGEND		
HOLE	DESCRIPTION	REQ.
A	9/32 DIA.	6
B	1/2 DIA.	2
C	SEE DETAIL	1



DETAIL "C"
(1 Req.)

TMC PART # TO BE IN THE FOLLOWING FORM :

MS-2806-S

BASIC TMC No.

MATERIAL CODE
(SEE CHART)

FINISH NOTE
DEGREASE & PREPARE SURFACE
FOR FINISHES AS PER TABLE

LD-1041 (FOR KIT-132)
REF: LD-1039 (FOR RAK 11B-1)

SYM	DESCRIPTION	DATE	CH. NO.	DRAFTS	CHECKER	ENG. APP.
A	ON CHT. FINISH. 5520 WAS 5220 (TEX. VINYL)	1/6/65	15167	F.V.V.	906	[Signature]

UNLESS OTHERWISE SPECIFIED:
DIMENSIONS ARE IN INCHES
TOLERANCES ON FRACTIONS ± 1/64 DECIMALS ± .005 ANGLES ± 1/20

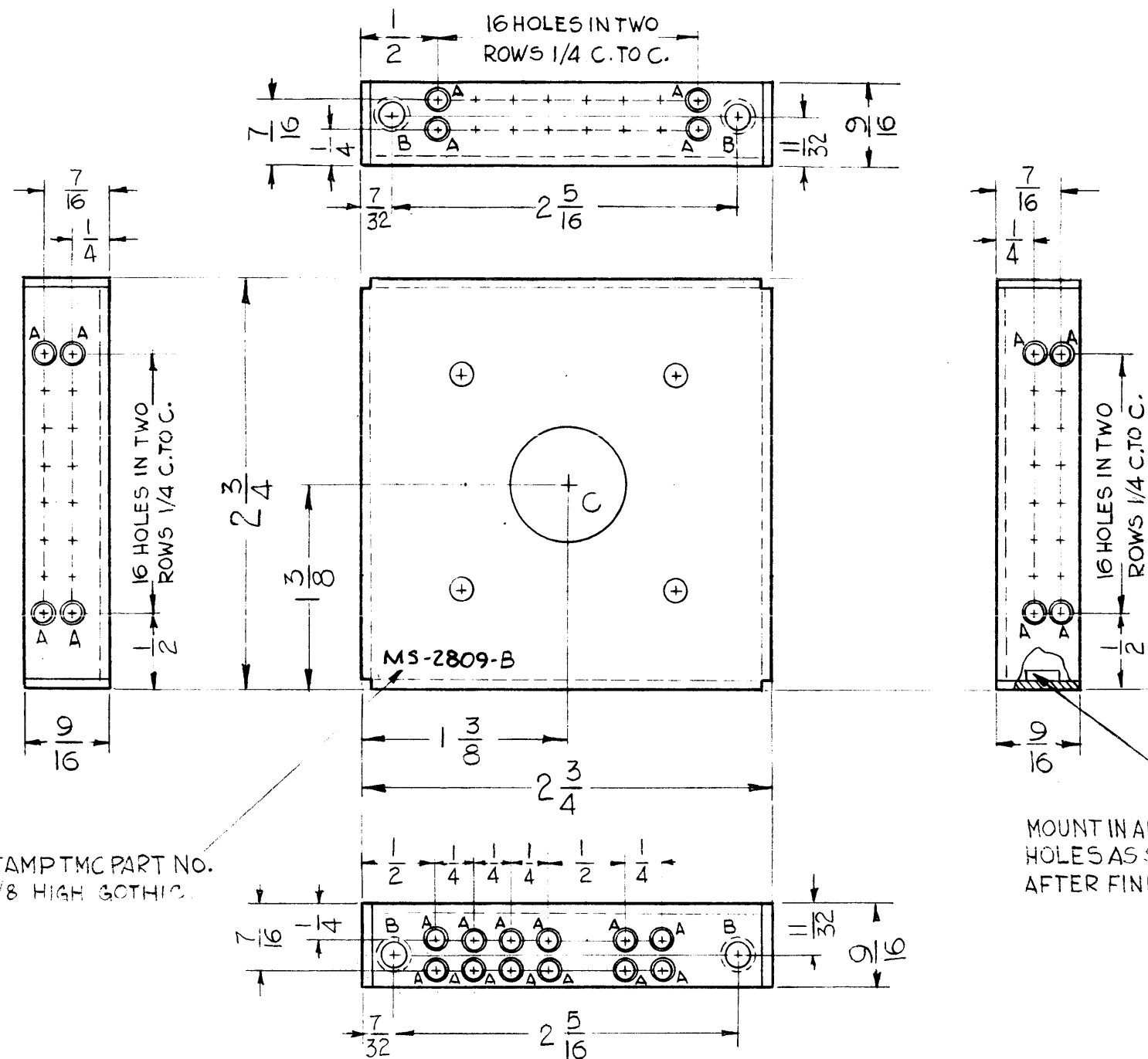
SCALE: DO NOT SCALE
MAXIMUM ALLOWABLE TOLERANCES HAVE BEEN DETERMINED AND ANY DEVIATIONS WILL BE CAUSE FOR REJECTION.
REMOVE ALL BURRS AND SHARP EDGES

REQ. PER UNIT	MODEL	SECTION	ASS'Y. NO.	DATE
	RAK-11B-1			1-5-62

REQ.	ITEM	PART NO.	DESCRIPTION	SYMBOL
		SEE CHART	THE TECHNICAL MATERIEL CORP. MAMARONECK, NEW YORK	
		SEE CHART	PLATE, MTG, INTERCONNECTING CABLE	
			G.D.L. RLUZZO [Signature]	
			TYPE & TEMPER HEAT TREAT. SPEC.	
			SEE NOTE & CHART	
			FINISH & SPEC. NO.	
			DRAWN CHECKED FINAL APPROVAL	
			RK RK MS-2806	A

MS-2809 B

THE CONTENTS OF THIS DRAWING ARE THE EXCLUSIVE PROPERTY OF THE TECHNICAL MATERIEL CORP. ITS UNAUTHORIZED USE OR REPRODUCTION IN WHOLE OR IN PART IS STRICTLY FORBIDDEN.



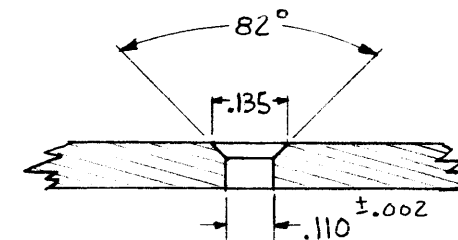
METAL STAMP TMC PART NO. ON REAR 1/8 HIGH GOTHIC.

MOUNT IN ALL "B" HOLES AS SHOWN AFTER FINISH

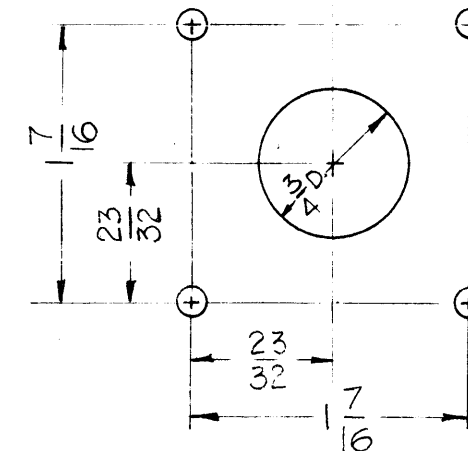
USE MATERIAL THICKNESS FOR MAX. RADIUS ON ALL BENDS UNLESS OTHERWISE SPECIFIED

LEGEND		
HOLE	DESCRIPTION	REQ.
A	SEE DETAIL	60
B	.161 - .164 DIA.	4
C	SEE DETAIL	1

"A"-DETAIL



9/64 DIA. 4 Req.



"C" DETAIL

REF: LD-1101 (2)

4	1	NT-129-440-4	NUT, ROUND SWAGE TYPE	B
REQ.	ITEM	PART NO.	DESCRIPTION	SYMBOL
.064 THK.			THE TECHNICAL MATERIEL CORP.	
STOCK SIZE			MAMARONECK, NEW YORK	
ALUMINUM			BRACKET, MOUNTING, CRYSTAL	
MATERIAL				
5052-432		G.D.L.		BP
TYPE & TEMPER		DRAWN		
S404 YELLOW IRIDITE		CHECKED		MS-2809 B
FINISH & SPEC. NO.		MECH. DES. APP.		

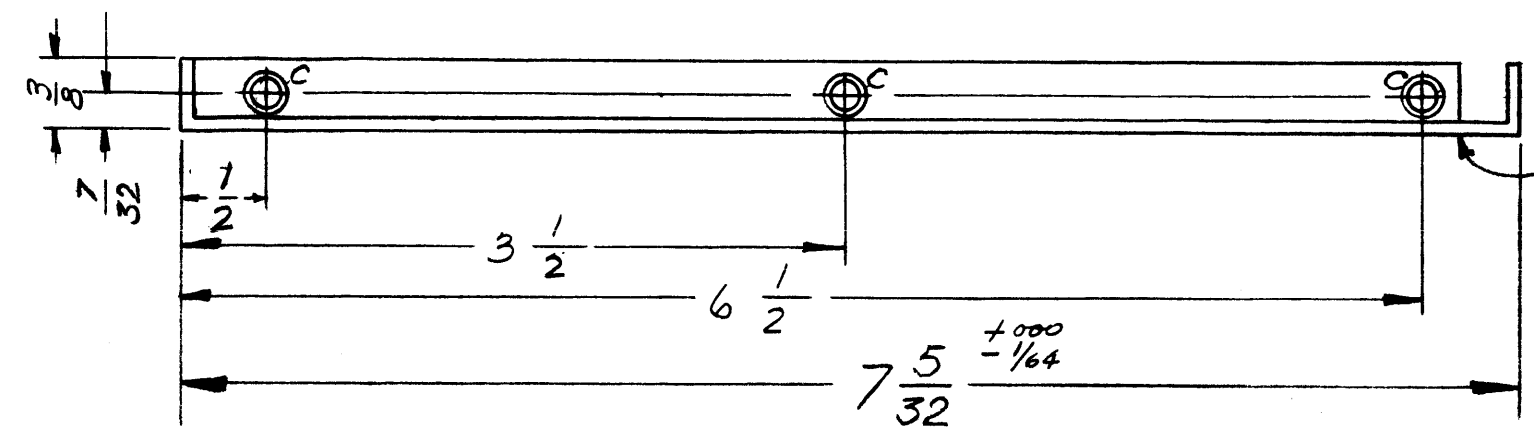
B	(60) "A" HOLES WERE .111 DIA.	10-26-62	7535			
A	METAL STAMP RELOCATED WAS ON FRONT	5-25-62	#	M.F.		
SYM	DESCRIPTION	DATE	CH. NO.	DRAFTS	CHECKER	ENG. APP.
UNLESS OTHERWISE SPECIFIED:		SCALE: DO NOT SCALE				
DIMENSIONS ARE IN INCHES		MAXIMUM ALLOWABLE TOLERANCES HAVE BEEN DETERMINED AND ANY DEVIATIONS WILL BE CAUSE FOR REJECTION.				
TOLERANCES ON FRACTIONS ± 1/64 DECIMALS ± .05 ANGLES ± 1/20		REMOVE ALL BURRS AND SHARP EDGES				
		1	4FS-1			B-15-62
		REQ. PER UNIT	MODEL	SECTION	ASS'Y. NO.	DATE
		USED ON				

MS-2816

THE CONTENTS OF THIS DRAWING ARE THE EXCLUSIVE PROPERTY OF THE TECHNICAL MATERIEL CORP. ITS UNAUTHORIZED USE OR REPRODUCTION IN WHOLE OR IN PART IS STRICTLY FORBIDDEN.

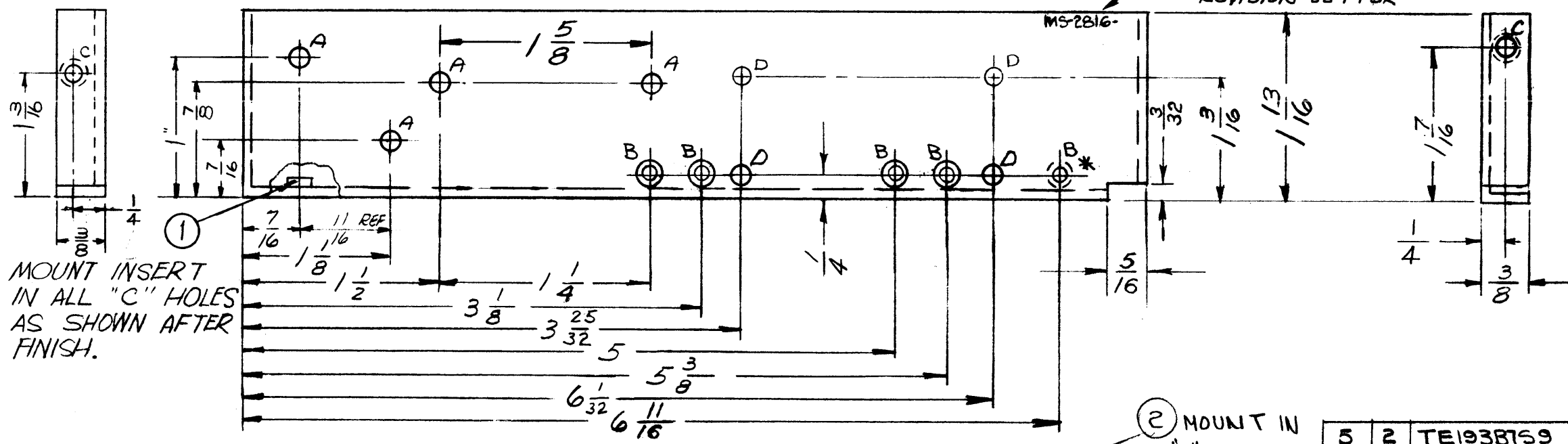
NOTE:
* INDICATES 1 "B" HOLE C'SUNK FROM REAR

~HOLES~		REQ
A	9/64 DIA.	4
B	.136 DIA. C'SINK 60°	5
C	.161/64 DIA	5
D	5/32 DIA.	4



PUNCH FROM THIS SIDE

METAL STAMP TMC PART NO. 1/8 HIGH GOTHIC, WITH LATEST REVISION LETTER



PROPERTY OF THE TECHNICAL MATERIEL CORPORATION
ALL RIGHTS RESERVED
THIS DRAWING IS THE PROPERTY OF THE TECHNICAL MATERIEL CORPORATION AND IS LOANED TO THE USER FOR MUTUAL ASSISTANCE AND IS SUBJECT TO RECALL AT ANY TIME.

Property of:
THE TECHNICAL MATERIEL CORPORATION
MAMARONECK, NEW YORK

USE MATERIAL THICKNESS FOR MAX. RADIUS ON ALL BENDS UNLESS OTHERWISE SPECIFIED

MOUNT INSERTS AFTER FINISHING

REQ.	ITEM	PART NO.	M. GELLMAN	DESCRIPTION	SYMBOL
5	2	TE1938159		TERMINAL, STUD, INSULATED	B
5	1	NT-129-440-4		NUT, ROUND, SWAGE TYPE	C
.064 THK STOCK SIZE					
ALUMINUM MATERIAL					
5052-H32					
5404-YEL. IRIDITE FINISH & SPEC. NO.					
THE TECHNICAL MATERIEL CORP. MAMARONECK, NEW YORK					
BRACKET, MOUNTING, RF SHIELD, #1					
DRAWN: <i>ab</i> CHECKED: <i>JWA</i> FINAL APPROVAL: <i>BP</i>					
MS-2816 A					

SYM	DESCRIPTION	DATE	CH. NO.	DRAFTS	CHECKER	ENG. APP.
A	METAL STAMP NOTE UPDATED "B" HOLE WAS .136 DIA. ITEM (2) ADDED	6-6-64	12046	<i>[Signature]</i>	<i>MR.</i>	<i>[Signature]</i>

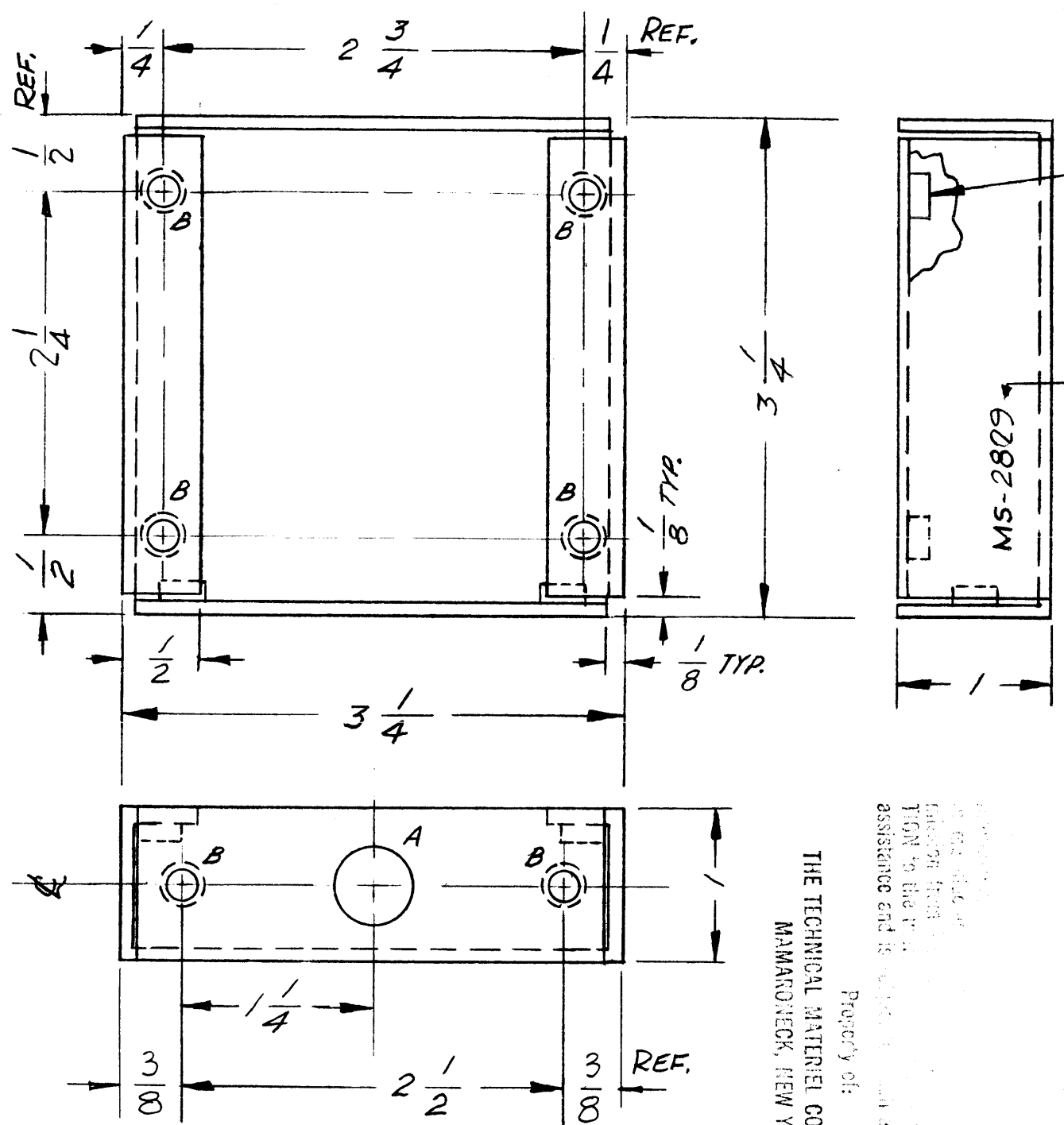
UNLESS OTHERWISE SPECIFIED:
DIMENSIONS ARE IN INCHES
TOLERANCES ON FRACTIONS ± 1/64 DECIMALS ± .05 ANGLES ± 1/2°

SCALE: DO NOT SCALE
MAXIMUM ALLOWABLE TOLERANCES HAVE BEEN DETERMINED AND ANY DEVIATIONS WILL BE CAUSE FOR REJECTION. REMOVE ALL BURRS AND SHARP EDGES

REQ. PER UNIT	MODEL	SECTION	ASS'Y. NO.	DATE
1	HR-11N			7-24-62

MS-2829

THE CONTENTS OF THIS DRAWING ARE THE EXCLUSIVE PROPERTY OF THE TECHNICAL MATERIEL CORP. ITS UNAUTHORIZED USE OR REPRODUCTION IN WHOLE OR IN PART IS STRICTLY FORBIDDEN.



MOUNT ITEM 1 IN ALL "B" HOLES AFTER FINISHING.

METAL STAMP TMC PART NO. MS-2829 $\frac{1}{8}$ HIGH GOTHIC AS SHOWN.

HOLES:
 A - $\frac{1}{2}$ DIA. 1 REQ.
 B - .191-.194 DIA. 6 REQ.

USE MATERIAL THICKNESS FOR MAX. RADIUS ON ALL BENDS UNLESS OTHERWISE SPECIFIED

MOUNT INSERTS AFTER FINISHING

THE TECHNICAL MATERIEL CORPORATION
 MAMARONECK, NEW YORK

Property of:
 THE TECHNICAL MATERIEL CORPORATION
 MAMARONECK, NEW YORK
 This drawing is the property of THE TECHNICAL MATERIEL CORPORATION and is to be used only for the purpose for which it was prepared. It is not to be reproduced, copied, or distributed in any form without the written permission of THE TECHNICAL MATERIEL CORPORATION.

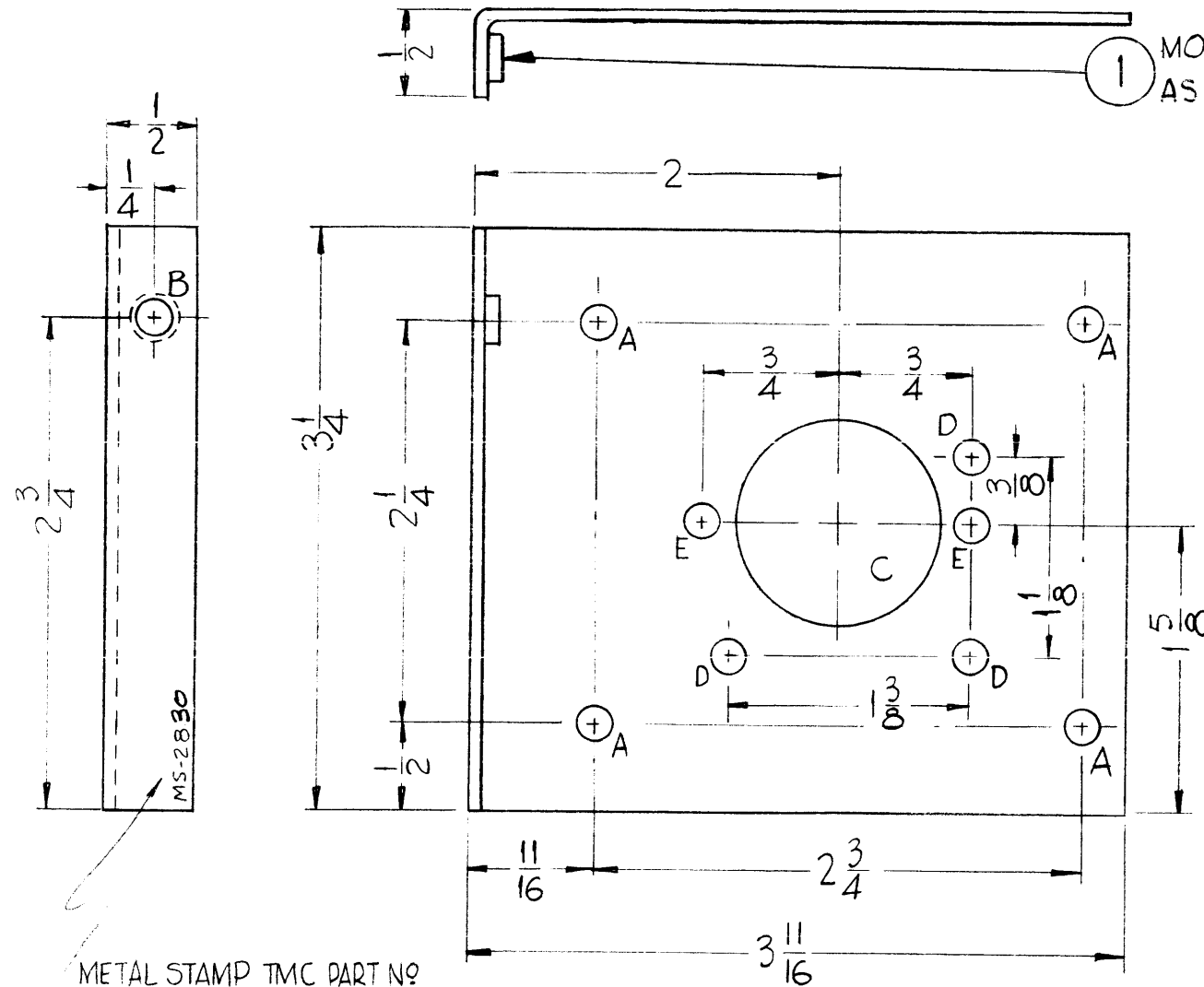
6	1	NT129-632-4	NUT, ROUND, SWAGE TYPE	B
REQ.	ITEM	PART NO.	DESCRIPTION	SYMBOL
.064			THE TECHNICAL MATERIEL CORP. MAMARONECK, NEW YORK	
ALUMINUM			BRACKET, MOUNTING, FREQUENCY STANDARD	
5052-H32			WA	JMO
TYPE & TEMPER		HEAT TREAT. SPEC.	DRAWN	CHECKED
5404-YEL. IRIDITE			SD	JMO
FINISH & SPEC. NO.			ELEC. DES. APP.	MECH. DES. APP.
				MS-2829

SYM	DESCRIPTION	DATE	CH. NO.	DRAFTS	CHECKER	ENG. APP.
UNLESS OTHERWISE SPECIFIED:						
DIMENSIONS ARE IN INCHES						
TOLERANCES ON						
FRACTIONS $\pm 1/64$ DECIMALS $\pm .05$ ANGLES $\pm 1/2^\circ$						
SCALE:						
MAXIMUM ALLOWABLE TOLERANCES HAVE BEEN DETERMINED AND ANY DEVIATIONS WILL BE CAUSE FOR REJECTION. REMOVE ALL BURRS AND SHARP EDGES						
1	C55-1A					1/10/62
REQ. PER UNIT	MODEL	SECTION	ASS'Y. NO.	DATE	USED ON	

MS-2830

THE CONTENTS OF THIS DRAWING ARE THE EXCLUSIVE PROPERTY OF THE TECHNICAL MATERIEL CORP. ITS UNAUTHORIZED USE OR REPRODUCTION IN WHOLE OR IN PART IS STRICTLY FORBIDDEN.

HOLES	DESCRIPTION	RFQ.
A	11/64 Dia.	4
B	.191-.194 Dia.	1
C	11/8 Dia.	1
D	7/32 Dia.	3
E	9/64 Dia.	2



METAL STAMP TMC PART NO
GOTHIC 1/8 HIGH.

USE MATERIAL THICKNESS FOR MAX. RADIUS ON ALL BENDS UNLESS OTHERWISE SPECIFIED
MOUNT INSERTS AFTER FINISHING

BLANK SIZE
4 3/32 X 3 1/4

REF: LD-999(2)

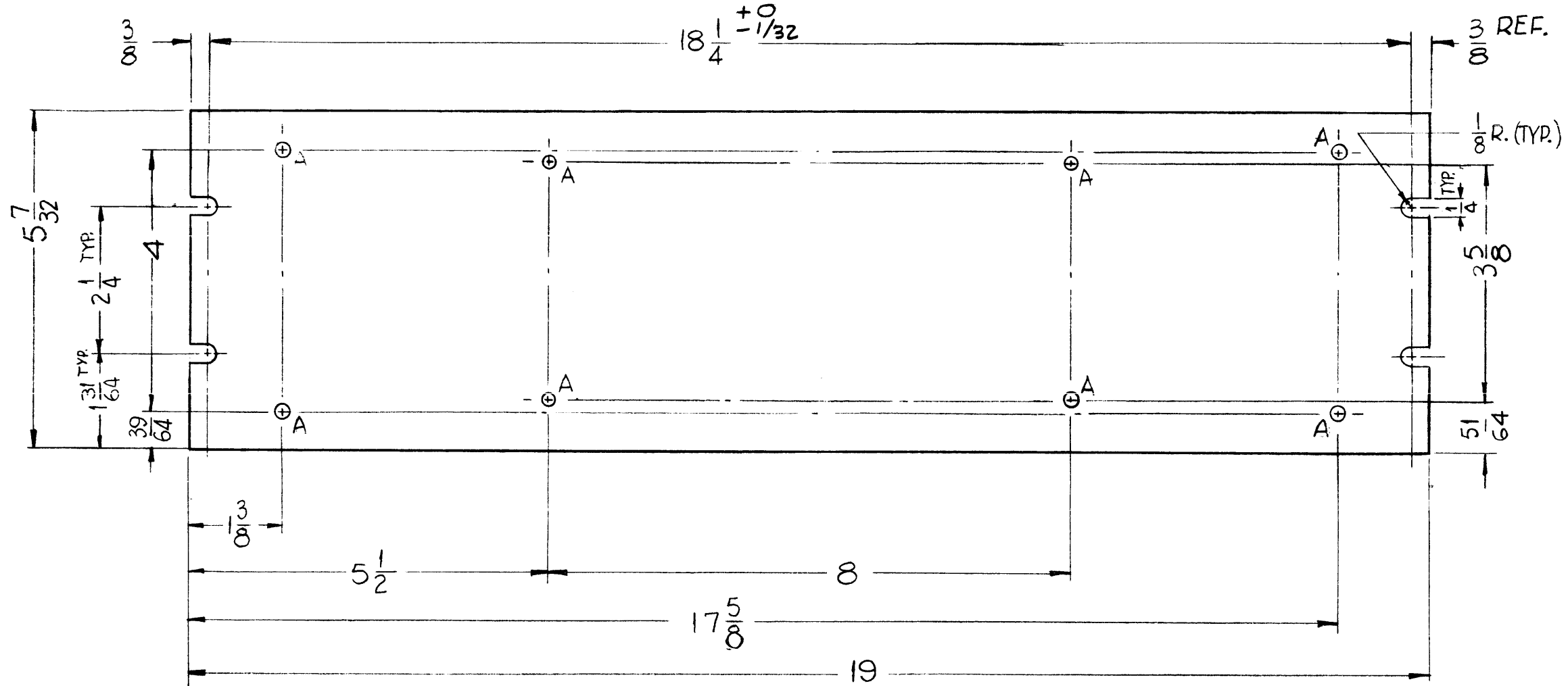
REQ.	ITEM	PART NO.	DESCRIPTION	SYMBOL
1	1	NT-129-632-4	NUT, ROUND, SWAGE TYPE	B
		.064	STOCK SIZE	
		ALUMINUM	MATERIAL	
		5052-H32	TYPE & TEMPER	
		S404 IRIDITE	FINISH & SPEC. NO.	
		1-11-62	DATE	
		CSS-1A	MODEL	
			SECTION	
			ASS'Y. NO.	
			DATE	
			USED ON	

SYM	DESCRIPTION	DATE	CH. NO.	DRAFTS	CHECKER	ENG. APP.
	UNLESS OTHERWISE SPECIFIED: DIMENSIONS ARE IN INCHES TOLERANCES ON FRACTIONS ± 1/64 DECIMALS ± .005 ANGLES ± 1/2°					
	SCALE: MAXIMUM ALLOWABLE TOLERANCES HAVE BEEN DETERMINED AND ANY DEVIATIONS WILL BE CAUSE FOR REJECTION. REMOVE ALL BURRS AND SHARP EDGES					

MS-2840 A

THE CONTENTS OF THIS DRAWING ARE THE EXCLUSIVE PROPERTY OF THE TECHNICAL MATERIEL CORP. ITS UNAUTHORIZED USE OR REPRODUCTION IN WHOLE OR IN PART IS STRICTLY FORBIDDEN.

HOLES	DESCRIPTION	REQ.
A	13/64 DIA.	8



NOTE TO PERSONS VIEWING THIS DRAWING
 THE TECHNICAL MATERIEL CORPORATION claims proprietary right in the material disclosed herein. This drawing is issued in confidence for engineering information only and may not be reproduced or used to manufacture anything shown hereon without permission from THE TECHNICAL MATERIEL CORPORATION to the user. This drawing is loaned for mutual assistance and is subject to recall at any time.

Property of:
 THE TECHNICAL MATERIEL CORPORATION
 MAMARONECK, NEW YORK

- MACHINING NOTE**
- 1. LATERAL BOW OF PANEL MUST BE KEPT TO .031 TOL.
 - 2. MILL ALL EDGES.
 - 3. HOLES MUST BE DRILLED.
 - 4. PANEL MUST BE FREE OF ALL MACHINING MARKS, GOUGES & SCRATCH. IF NECESSARY, SAND FRONT OF PANEL WITH NO 120 GRIT SANDPAPER.
- FINISH NOTES ~**
- 1. S404 - YELLOW IRIDITE
 - 2. S114 - ZINC CHROMATE PRIMER ——— FRONT & EDGES
 - 3. S115 - TMC SMOOTH GREY ENAMEL OR PRIME & PAINT TO CUSTOMER SPEC. ONLY

A	DIM. 2 1/4 WAS 2 3/4, 1 31/64 WAS 1 13/64	7-30-62	6989	SG	WJF	VBE
SYM	DESCRIPTION	DATE	CH. NO.	DRAFTS	CHECKER	ENG. APP.
UNLESS OTHERWISE SPECIFIED:		SCALE: HALF				
DIMENSIONS ARE IN INCHES		MAXIMUM ALLOWABLE TOLERANCES HAVE BEEN DETERMINED AND ANY DEVIATIONS WILL BE CAUSE FOR REJECTION.				
TOLERANCES ON FRACTIONS ± 1/64 DECIMALS ± .005 ANGLES ± 1/2°		REMOVE ALL BURRS AND SHARP EDGES				

REQ. PER UNIT	MODEL	SECTION	ASS'Y. NO.	DATE
	GPT-10K(JAC)			1-16-62
USED ON				

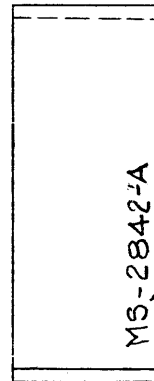
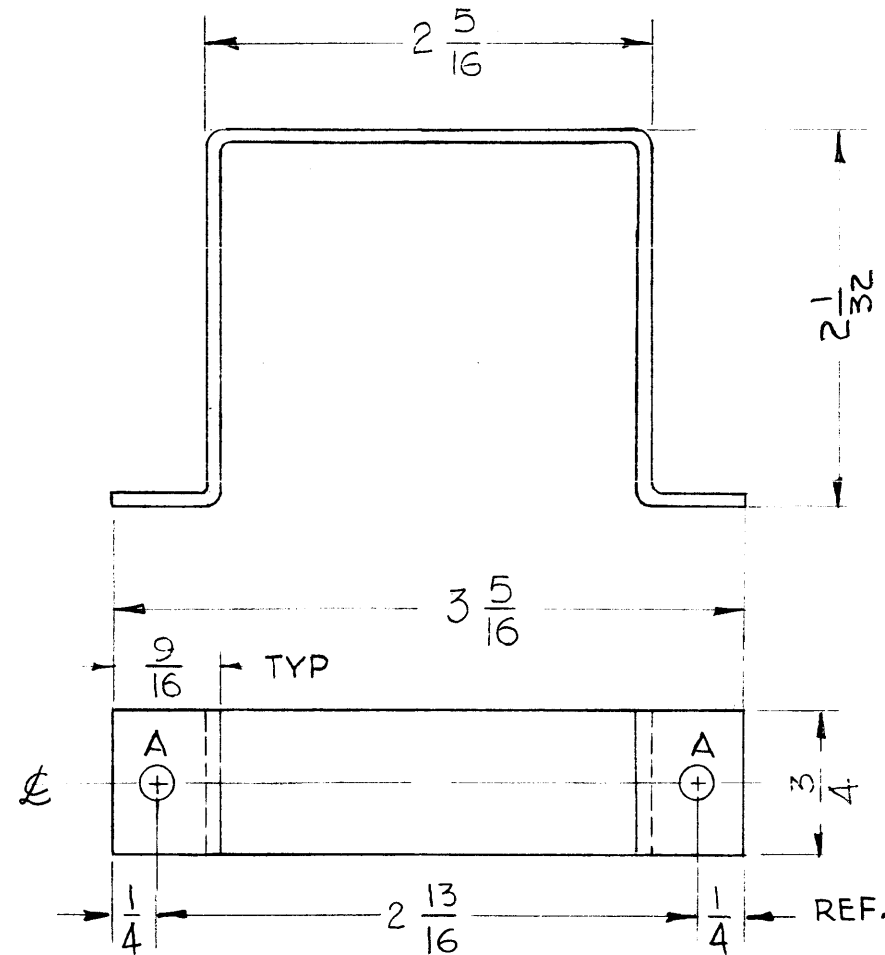
REQ.	ITEM	PART NO.	DESCRIPTION	SYMBOL
		3/16 THK.	THE TECHNICAL MATERIEL CORP.	
		STOCK SIZE	MAMARONECK, NEW YORK	
		ALUMINUM	PANEL, FRONT	
		MATERIAL		
	2024-T3		DR. Mann	RUZZO
	TYPE & TEMPER	HEAT TREAT. SPEC.	DRAWN	CHECKED
	SEE NOTES		MECH. DES. APP.	FINAL APPROVAL
	FINISH & SPEC. NO.		ELEC. DES. APP.	MS-2840 A

MS-2842 A

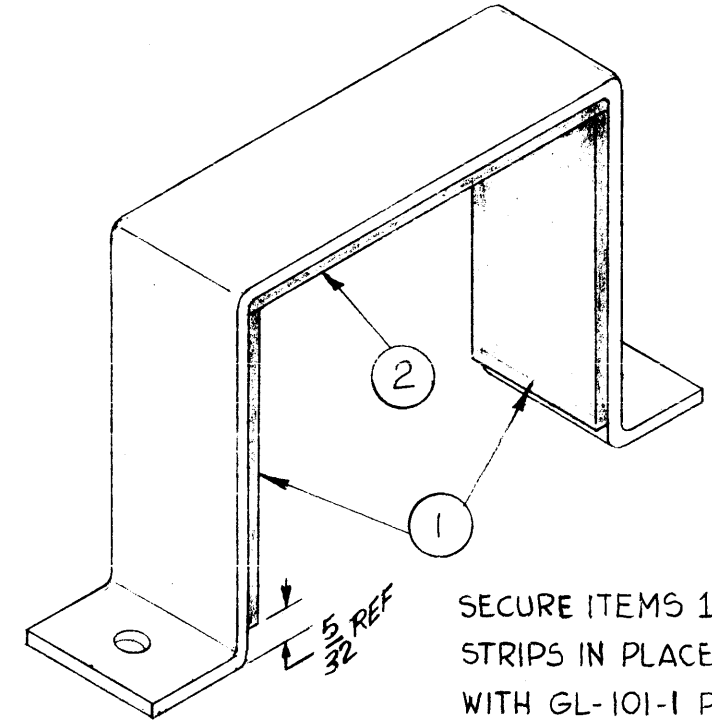
THE CONTENTS OF THIS DRAWING ARE THE EXCLUSIVE PROPERTY OF THE TECHNICAL MATERIEL CORP. ITS UNAUTHORIZED USE OR REPRODUCTION IN WHOLE OR IN PART IS STRICTLY FORBIDDEN.

HOLE5~

A - 5/32 DIA. 2Req.



METAL STAMP TMC PART NO. MS-2842-A
1/8 HIGH GOTHIC AS SHOWN



SECURE ITEMS 1 & 2, RUBBER STRIPS IN PLACE (AS SHOWN) WITH GL-101-1 PLIOBOND, ITEM 3.

— ISOMETRIC VIEW —

[Faint, illegible text, possibly bleed-through from another drawing]

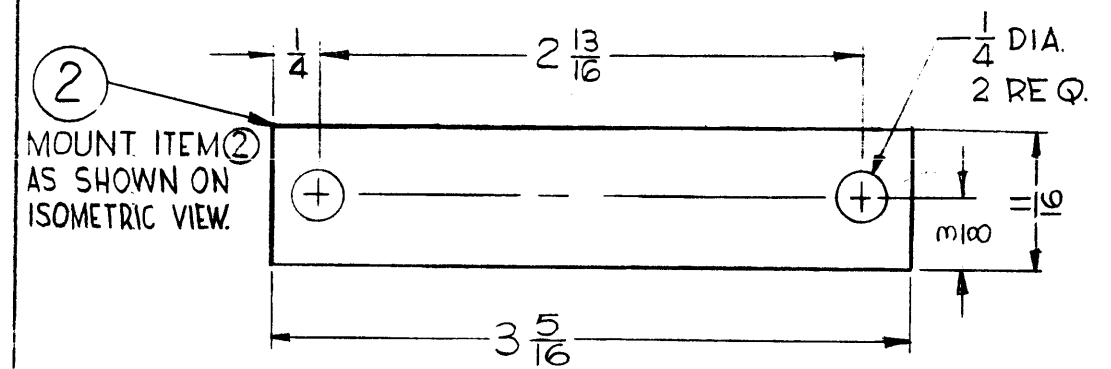
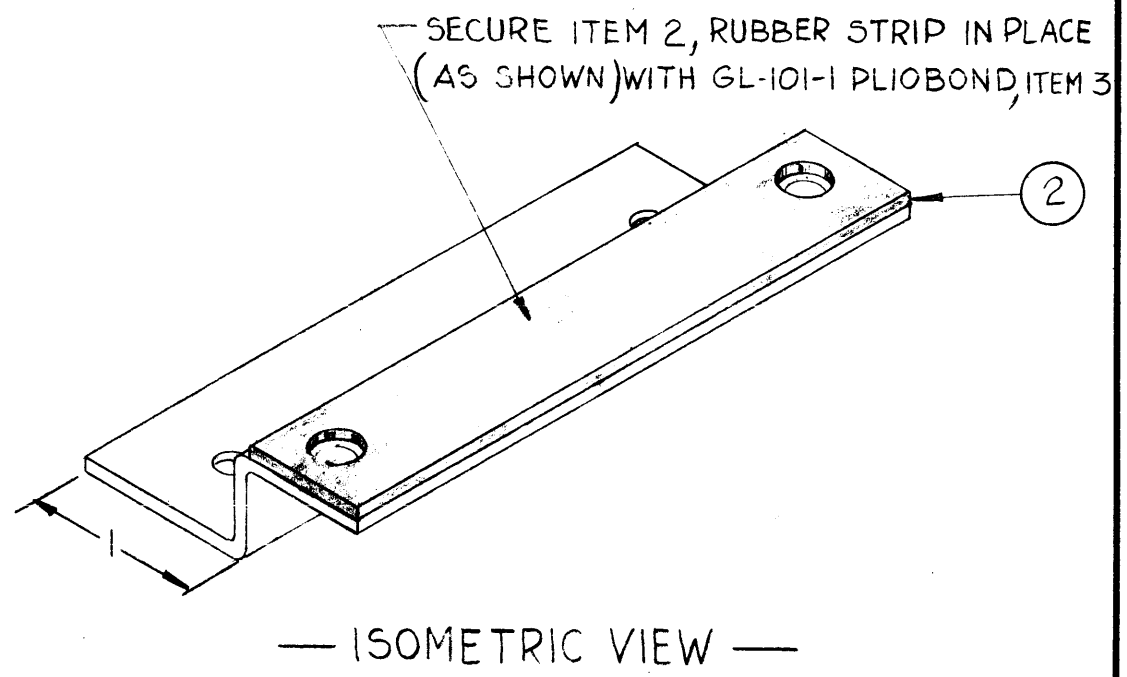
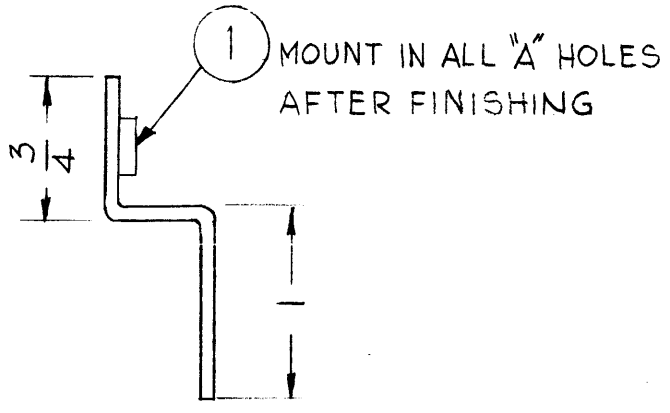
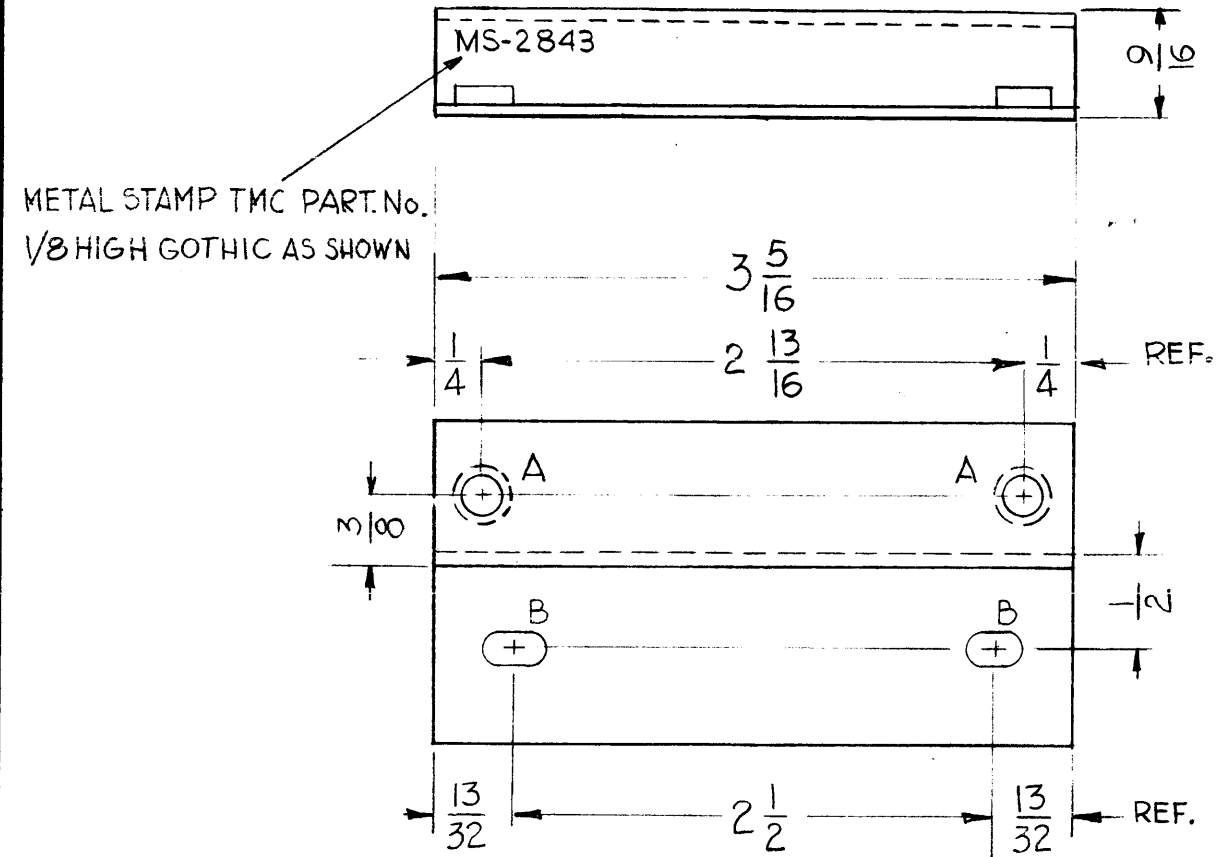
X	3	GL-101-1	PLIOBOND	
1	2	RY-123-3	SHEET, RUBBER, 1/16" THK	
2	1	RY-123-4	SHEET, RUBBER, 1/16" THK	
REQ.	ITEM	PART NO.	DESCRIPTION	SYMBOL
.064			THE TECHNICAL MATERIEL CORP. MAMARONECK, NEW YORK	
ALUMINUM			RETAINER, FREQUENCY STANDARD	
5032-432			G.D.L.	<i>[Signature]</i>
TYPE & TEMPER		HEAT TREAT. SPEC.	DRAWN	CHECKED
S404 -YELLOW IRIDITE			<i>[Signature]</i>	<i>[Signature]</i>
FINISH & SPEC. NO.			ELEC. DES. APP.	MECH. DES. APP.
			MS-2842	A

A	ON ISOMETRIC REF WAS TYP WAS 1/16	4-1-63	8684	RC	YWB	QWB
SYM	DESCRIPTION	DATE	CH. NO.	DRAFTS	CHECKER	ENG. APP.
UNLESS OTHERWISE SPECIFIED: DIMENSIONS ARE IN INCHES TOLERANCES ON FRACTIONS ± 1/64 DECIMALS ± .005 ANGLES ± 1/2°		SCALE: DO NOT SCALE MAXIMUM ALLOWABLE TOLERANCES HAVE BEEN DETERMINED AND ANY DEVIATIONS WILL BE CAUSE FOR REJECTION. REMOVE ALL BURRS AND SHARP EDGES				
1	CSS-1A					1-18-62
REQ. PER UNIT	MODEL	SECTION	ASS'Y. NO.	DATE		
				USED ON		

MS-2843

THE CONTENTS OF THIS DRAWING ARE THE EXCLUSIVE PROPERTY OF THE TECHNICAL MATERIEL CORP. ITS UNAUTHORIZED USE OR REPRODUCTION IN WHOLE OR IN PART IS STRICTLY FORBIDDEN.

LEGEND		
HOLE	DESCRIPTION	Req.
A	.191 - .194 DIA.	2
B	11/64 X 11/32	2



NOTICE TO PERSONS RECEIVING THIS DRAWING

THE TECHNICAL MATERIEL CORPORATION claims proprietary right in the material disclosed hereon. This drawing is issued in confidence for engineering information only and may not be reproduced or used to manufacture anything shown hereon without permission from THE TECHNICAL MATERIEL CORPORATION to the user. This drawing is loaned for mutual assistance and is subject to recall at any time.

Property of:
THE TECHNICAL MATERIEL CORPORATION
MAMARONECK, NEW YORK

USE MATERIAL THICKNESS FOR MAX. RADIUS ON ALL BENDS UNLESS OTHERWISE SPECIFIED

MOUNT INSERTS AFTER FINISHING

BLANK SIZE
2 1/8 X 3 5/16

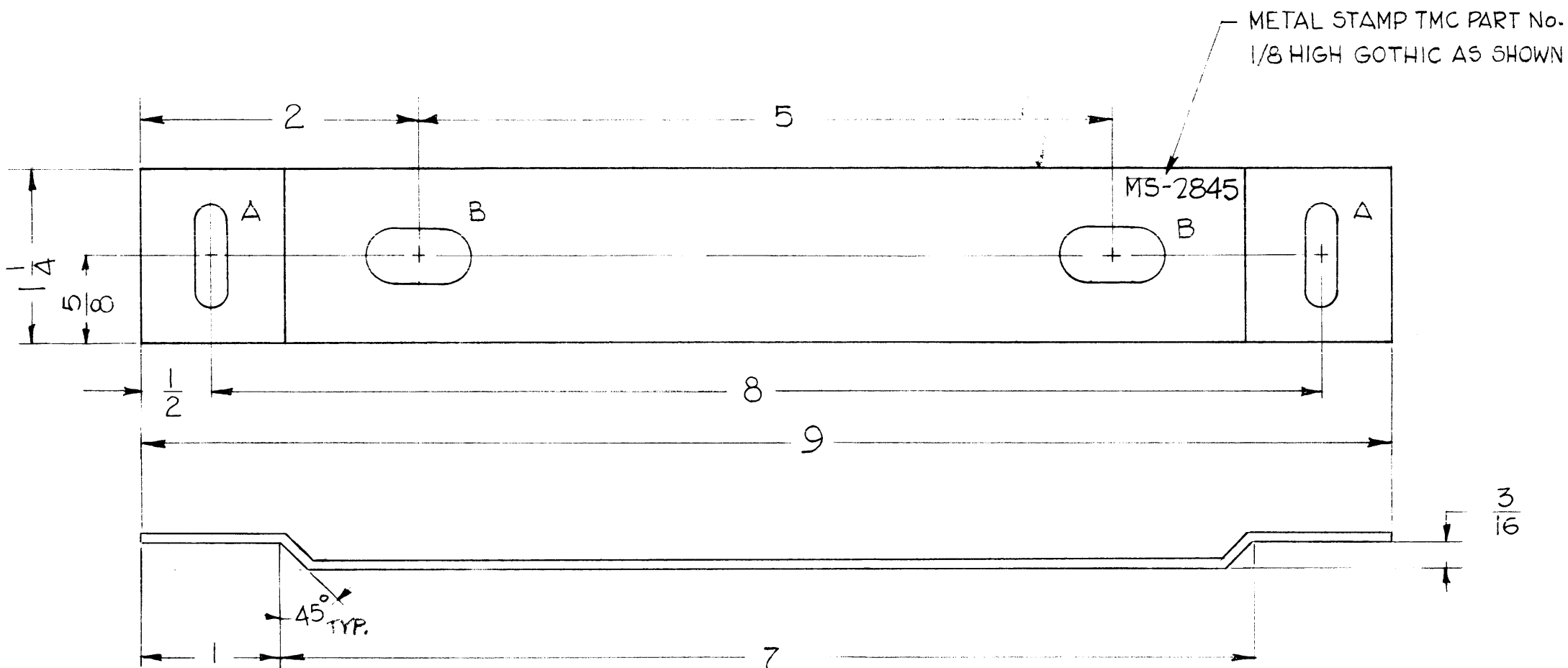
X	3	GL-101-1	PLIOBOND	
1	2	RY-123-2	SHEET, RUBBER, 1/16" THK	
2	1	NT-129-632-4	NUT, ROUND, SWAGE TYPE	A
REQ.	ITEM	PART NO.	DESCRIPTION	SYMBOL
.064 THK			THE TECHNICAL MATERIEL CORP.	
STOCK SIZE			MAMARONECK, NEW YORK	
ALUMINUM			BASE, BRACKET, MOUNTING	
MATERIAL			STANDARD FREQUENCY	
5032-H32			G.D.L.	H.S.
TYPE & TEMPER		HEAT TREAT. SPEC.	DRAWN	CHECKED
S404-YELLOW IRIDITE			J.D.	
FINISH & SPEC. NO.		ELEC. DES. APP.	MECH. DES. APP.	MS-2843

SYM	DESCRIPTION	DATE	CH. NO.	DRAFTS	CHECKER	ENG. APP.
UNLESS OTHERWISE SPECIFIED:		SCALE: DO NOT SCALE				
DIMENSIONS ARE IN INCHES		MAXIMUM ALLOWABLE TOLERANCES HAVE BEEN DETERMINED AND ANY DEVIATIONS WILL BE CAUSE FOR REJECTION.				
TOLERANCES ON FRACTIONS ± 1/64 DECIMALS ± .05 ANGLES ± 1/2°		REMOVE ALL BURRS AND SHARP EDGES				
A		1	CSS-1A			1-18-62
REQ. PER UNIT	MODEL	SECTION	ASS'Y. NO.	DATE		
				USED ON		

THE CONTENTS OF THIS DRAWING ARE THE EXCLUSIVE PROPERTY OF THE TECHNICAL MATERIEL CORP. ITS UNAUTHORIZED USE OR REPRODUCTION IN WHOLE OR IN PART IS STRICTLY FORBIDDEN.

MS-2845

LEGEND		
HOLE	DESCRIPTION	REQ.
A	13/64 x 3/4 OVAL SLOT	2
B	3/8 x 3/4 OVAL SLOT	2



NOTICE TO PERSONS RECEIVING THIS DRAWING

THE TECHNICAL MATERIEL CORPORATION claims proprietary right in the material disclosed herein. This drawing is issued in confidence for engineering information only and may not be copied, altered or used to manufacture anything other than as shown without permission from THE TECHNICAL MATERIEL CORPORATION to the user. This drawing is issued for mutual assistance and is subject to withdrawal at any time.

THE TECHNICAL MATERIEL CORPORATION
1000 10th Avenue
Mamaroneck, N.Y. 10543

FINISH ~

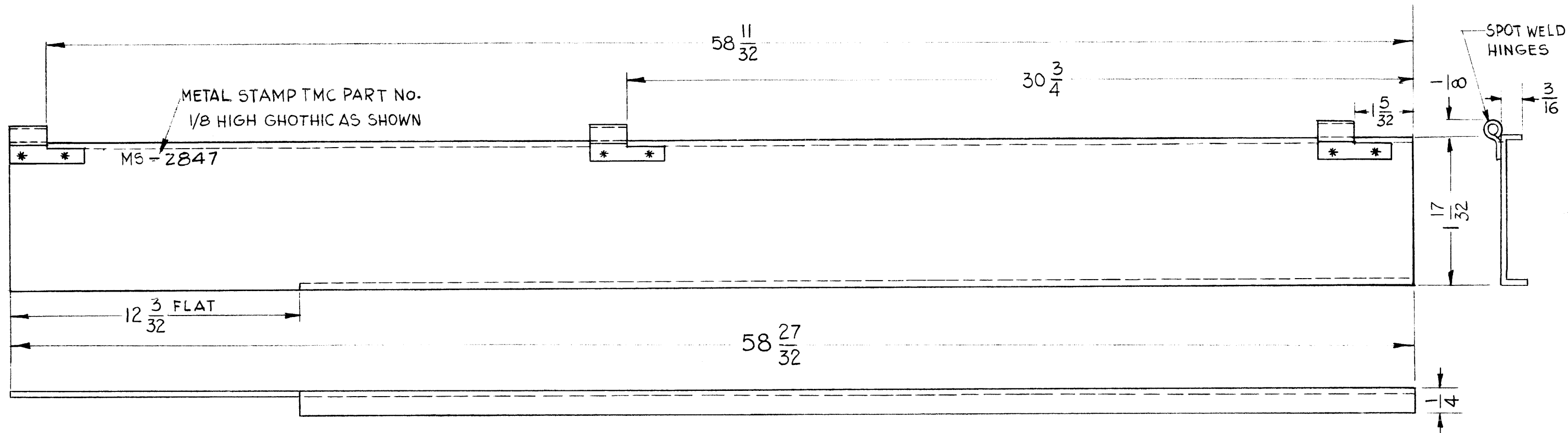
- 1 - 5114 - ZINC CHROMATE PRIMER
- 2 - 5220 - RCAF GREY SEMI-GLOSS ENAMEL

REQ.	ITEM	PART NO.	DESCRIPTION	SYMBOL
		13 GA. STOCK SIZE	THE TECHNICAL MATERIEL CORP. MAMARONECK, NEW YORK	
		STEEL		BRACKET, MOUNTING, DOOR LATCH
		MATERIAL	SHIP BOARD	
			G.D.L.	J.M.
			DRAWN	CHECKED
			SEE NOTE	FINAL APPROVAL
			ELEC. DES. APP.	MECH. DES. APP.
				MS-2845

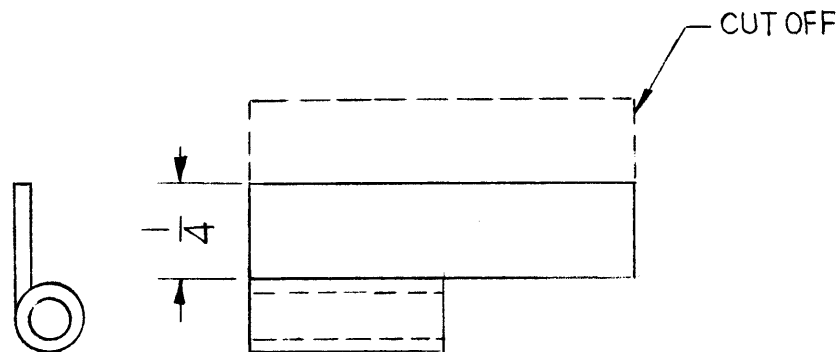
SYM	DESCRIPTION	DATE	CH. NO.	DRAFTS	CHECKER	ENG. APP.
	UNLESS OTHERWISE SPECIFIED:					
	DIMENSIONS ARE IN INCHES	SCALE: DO NOT SCALE				
	TOLERANCES ON	MAXIMUM ALLOWABLE TOLERANCES HAVE BEEN DETERMINED AND ANY DEVIATIONS WILL BE CAUSE FOR REJECTION.				
	FRACTIONS ± 1/64	REMOVE ALL BURRS AND SHARP EDGES				
	DECIMALS ± .005					
	ANGLES ± 1/2°					

MS-2847

THE CONTENTS OF THIS DRAWIN ARE THE EXCLUSIVE PROPERTY OF THE TECHNICAL MATERIEL CORP. ITS UNAUTHORIZED USE OR REPRODUCTION IN WHOLE OR IN PART IS STRICTLY FORBIDDEN.



NOTICE TO THE BUYER: THIS DRAWING IS THE PROPERTY OF THE TECHNICAL MATERIEL CORP. IT IS TO BE USED FOR THE MANUFACTURE OF THE PARTS SPECIFIED THEREON. IT IS TO BE KEPT IN THE FILE OF THE BUYER AND NOT TO BE REPRODUCED OR COPIED IN ANY MANNER WITHOUT THE WRITTEN PERMISSION OF THE TECHNICAL MATERIEL CORP.



STEEL HINGE 1/16 OPEN
 .045 THK. X .093 PIN DIA.
 STANLEY PT #65-33-80
 MODIFIED AS SHOWN

FINISH ~
 S371 DEGREASING
 S114 ZINC CHROMATE PRIMER
 S115 SMOOTH GRAY

NOTE
 NOTCH TO ACCOM.
 HINGE.

SYM	DESCRIPTION	DATE	CH. NO.	DRAFTS	CHECKER	ENG. APP.
	UNLESS OTHERWISE SPECIFIED:					
	DIMENSIONS ARE IN INCHES					
	TOLERANCES ON					
	FRACTIONS ± 1/64					
	DECIMALS ± .005					
	ANGLES ± 1/2°					

REQ. PER UNIT	MODEL	SECTION	ASS'Y. NO.	DATE
1	GPT-10K()AC			1-18-62

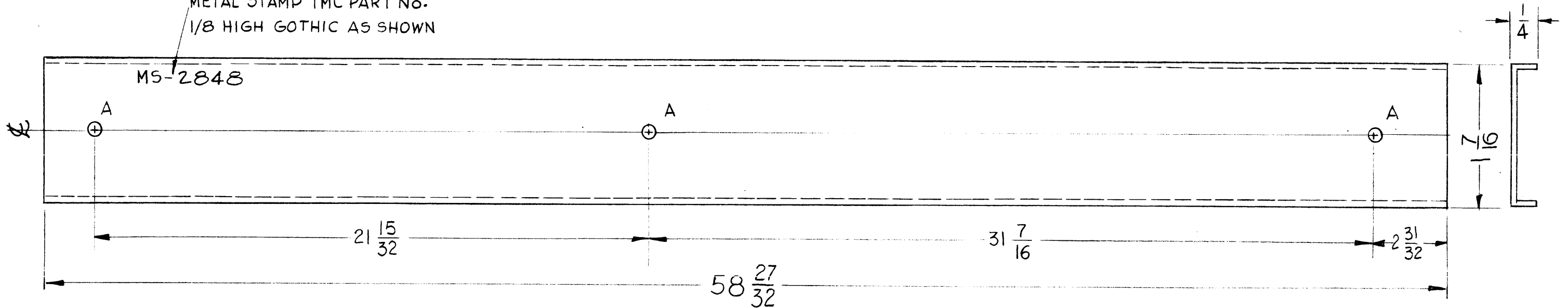
REQ. ITEM	PART NO.	DESCRIPTION	SYMBOL
	20 GAUGE	THE TECHNICAL MATERIEL CORP.	
	STOCK SIZE	MAMARONECK, NEW YORK	
	STEEL	STRIP, TRIM, REAR, RIGHT	
	MATERIAL	SHIPBOARD	
		G.D.L.	
		D.M.	
		S.P.M.	
		DRAWN	CHECKED
			FINAL APPROVAL
			MS-2847

MS-2848

THE CONTENTS OF THIS DRAWING ARE THE EXCLUSIVE PROPERTY OF THE TECHNICAL MATERIEL CORP. ITS UNAUTHORIZED USE OR REPRODUCTION IN WHOLE OR IN PART IS STRICTLY FORBIDDEN.

HOLES ~
A ~ 13/64 DIA. 3 Req.

METAL STAMP TMC PART No.
1/8 HIGH GOTHIC AS SHOWN



FINISH —
S371 DEGREASING
S114 ZINC CHROMATE PRIMER
S115 SMOOTH GRAY ENAMEL

REQ.	ITEM	PART NO.	DESCRIPTION	SYMBOL
		20 GAUGE STOCK SIZE	THE TECHNICAL MATERIEL CORP. MAMARONECK, NEW YORK	
		STEEL	STRIP, TRIM, REAR, LEFT SHIPBOARD	
			G.D.L. <i>DJM</i>	<i>JM</i>
			DRAWN <i>DB</i>	CHECKED <i>AR</i>
			SEE NOTE	FINAL APPROVAL
			FINISH & SPEC. NO.	ELEC. DES. APP. MECH. DES. APP.
				MS-2848

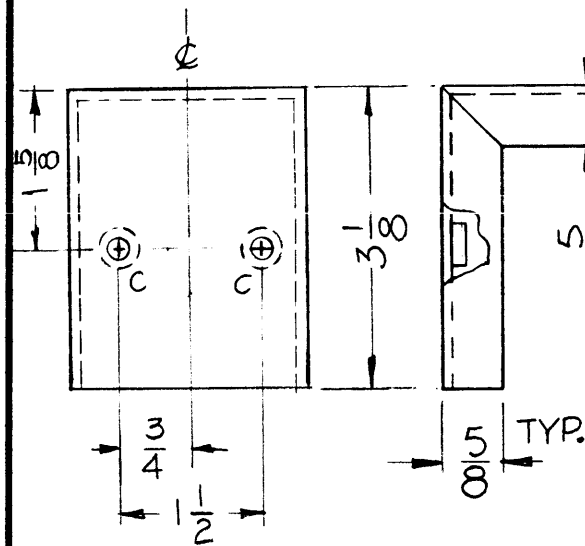
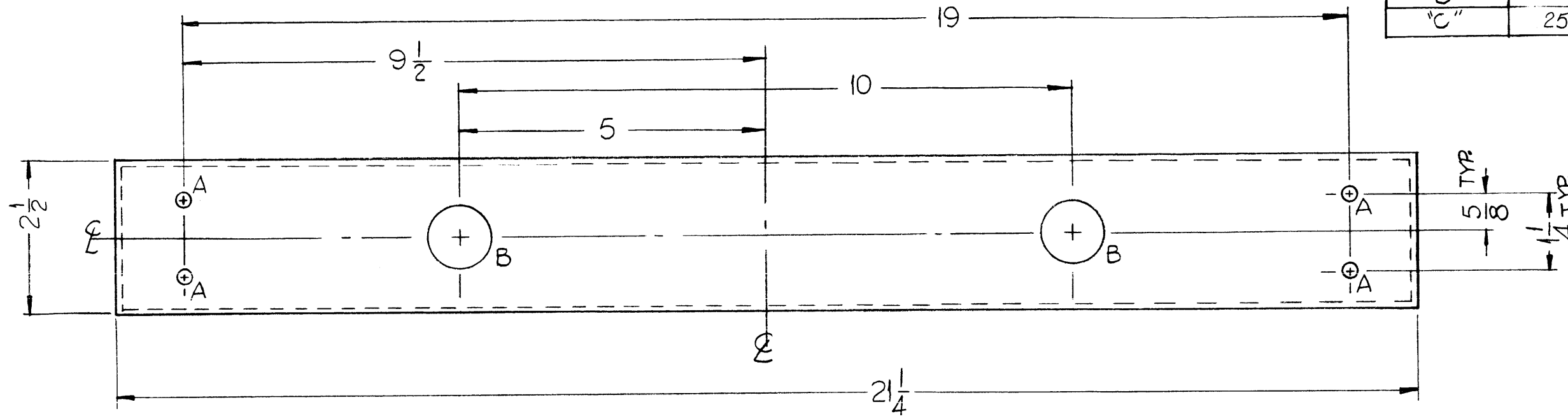
SYM	DESCRIPTION	DATE	CH. NO.	DRAFTS	CHECKER	ENG. APP.
	UNLESS OTHERWISE SPECIFIED: DIMENSIONS ARE IN INCHES TOLERANCES ON FRACTIONS ± 1/64 DECIMALS ± .005 ANGLES ± 1/2°					
		SCALE: DO NOT SCALE				
		MAXIMUM ALLOWABLE TOLERANCES HAVE BEEN DETERMINED AND ANY DEVIATIONS WILL BE CAUSE FOR REJECTION. REMOVE ALL BURRS AND SHARP EDGES				

REQ. PER UNIT	MODEL	SECTION	ASS'Y. NO.	DATE
1	GPT-10K(JAC)			1-18-61
USED ON				

THE CONTENTS OF THIS DRAWING ARE THE EXCLUSIVE PROPERTY OF THE TECHNICAL MATERIEL CORP. ITS UNAUTHORIZED USE OR REPRODUCTION IN WHOLE OR IN PART IS STRICTLY FORBIDDEN.

MS-2853

SYMBOL	DESCRIPTION	REQ'D.
"A"	13/64 D.	4
"B"	1" D.	2
"C"	253-.250 D.	4



MS-2853

METAL STAMP TMC PART NO. 1/8 HIGH GOTHIC AS SHOWN

NOTICE TO PERSONS RECEIVING THIS DRAWING

THE TECHNICAL MATERIEL CORPORATION claims proprietary right in the material disclosed hereon. This drawing is issued in confidence for engineering information only and may not be reproduced or used to manufacture anything shown hereon without permission from THE TECHNICAL MATERIEL CORPORATION to the user. This drawing is loaned for mutual assistance and is subject to recall at any time.

Property of:
THE TECHNICAL MATERIEL CORPORATION
MAMARONECK, NEW YORK

MOUNT IN ALL "C" HOLES (1)
AS SHOWN AFTER FINISH

USE MATERIAL THICKNESS FOR MAX. RADIUS ON ALL BENDS UNLESS OTHERWISE SPECIFIED

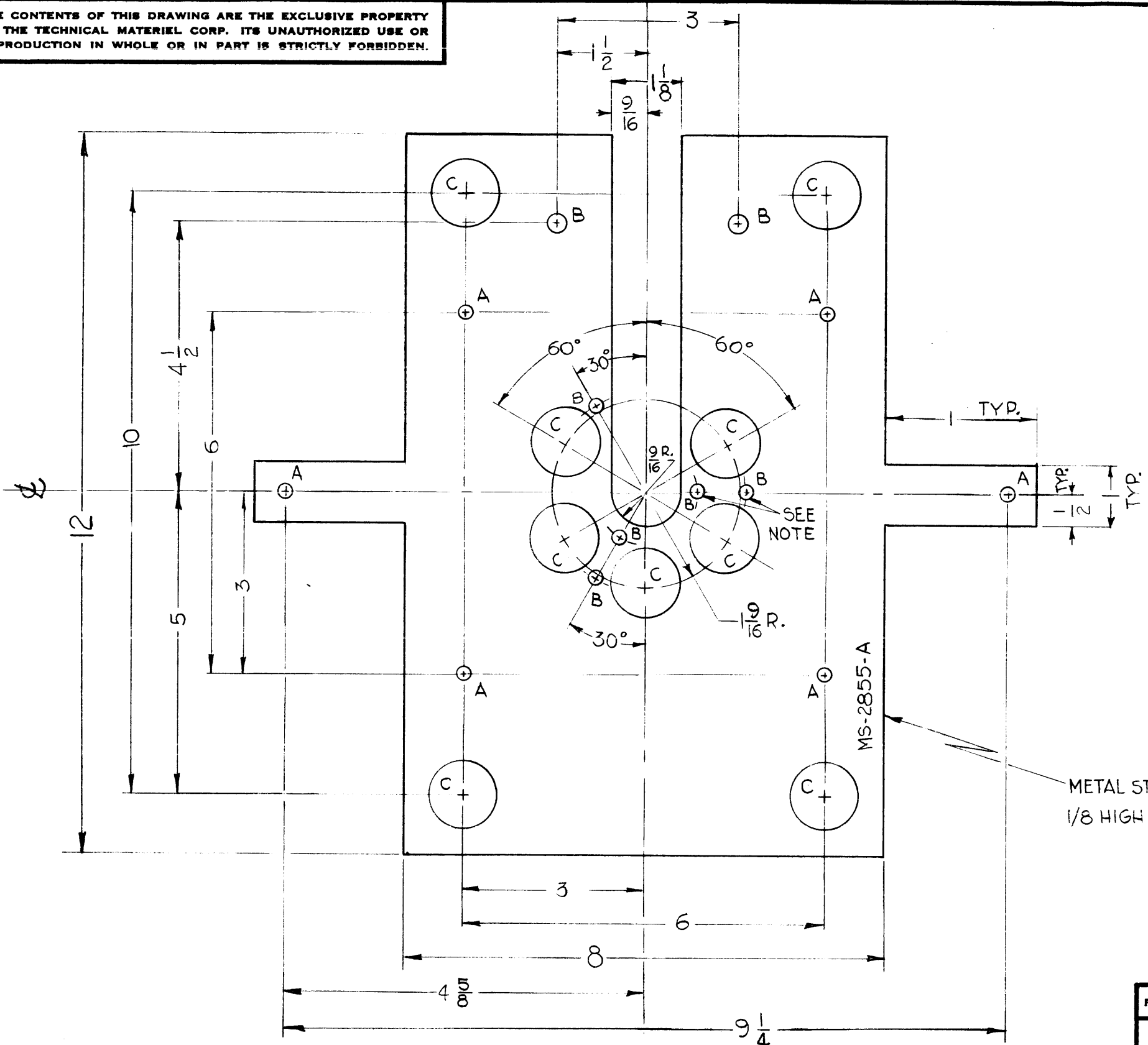
MOUNT INSERTS AFTER FINISHING

4	NT-129-1032-4	NUT, ROUND, SWAGE TYPE	C
REQ. ITEM	PART NO.	DESCRIPTION	SYMBOL
	.081	THE TECHNICAL MATERIEL CORP.	
	STOCK SIZE	MAMARONECK, NEW YORK	
	ALUMINUM	PEDESTAL, SUPPORT, ELECTRICAL EQUIP.	
	MATERIAL		
5052-H32		D. J. Mann	RHZZO
TYPE & TEMPER	HEAT TREAT. SPEC.	DRAWN	CHECKED
5404-YELLOW IRIDITE		QB	AC
FINISH & SPEC. NO.	ELEC. DES. APP.	MECH. DES. APP.	MS-2853

SYM	DESCRIPTION	DATE	CH. NO.	DRAFTS	CHECKER	ENG. APP.
	UNLESS OTHERWISE SPECIFIED:					
	DIMENSIONS ARE IN INCHES					
	TOLERANCES ON					
	FRACTIONS ± 1/64					
	DECIMALS ± .005					
	ANGLES ± 1/2°					
	SCALE: Do Not SCALE					
	MAXIMUM ALLOWABLE TOLERANCES HAVE BEEN DETERMINED AND ANY DEVIATIONS WILL BE CAUSE FOR REJECTION. REMOVE ALL BURRS AND SHARP EDGES					
REQ. PER UNIT	MODEL	SECTION	ASS'Y. NO.	DATE		
	TER-5000-50			1-30-62		
	USED ON					

MS-2855 A

THE CONTENTS OF THIS DRAWING ARE THE EXCLUSIVE PROPERTY OF THE TECHNICAL MATERIEL CORP. ITS UNAUTHORIZED USE OR REPRODUCTION IN WHOLE OR IN PART IS STRICTLY FORBIDDEN.



LEGEND		
HOLE	DESCRIPTION	REQ.
A	13/64 DIA.	6
B	5/16 DIA.	7
C	1/8 DIA.	9

ATTENTION TO PERSONS RECEIVING THIS DRAWING

THE TECHNICAL MATERIEL CORPORATION claims proprietary rights in the material disclosed herein. This drawing is issued in confidence for engineering information only and should be replaced or used in manufacturing only as shown herein without permission from THE TECHNICAL MATERIEL CORPORATION. All the information herein is intended for mutual assistance and should not be divulged to any other party.

THE TECHNICAL MATERIEL CORPORATION
 400 WEST 110TH STREET
 MAMARONECK, NEW YORK

NOTE

1 - OUTSIDE "B" HOLES (3) ON 1-5/8 R.
 2 - INSIDE "B" HOLES (2) ON 7/8 R.

METAL STAMP TMC PART NO.
 1/8 HIGH GOTHIC AS SHOWN

SYM	1 DIM. WAS 2-1/2	3	6	4	8	7	E	L	23
	A-5/8 DIM. WAS 6; 9-1/4 DIM. WAS 12 ZAHOLES WERE 17/64 X 17/32 D SLOTS								
	UNLESS OTHERWISE SPECIFIED:	SCALE: DO NOT SCALE							
	DIMENSIONS ARE IN INCHES	MAXIMUM ALLOWABLE TOLERANCES HAVE BEEN DETERMINED AND ANY DEVIATIONS WILL BE CAUSE FOR REJECTION.							
	TOLERANCES ON FRACTIONS ± 1/64 DECIMALS ± .005 ANGLES ± 1/2°	REMOVE ALL BURRS AND SHARP EDGES							
		1	TER-5000-50		2A-2355		1-29-62		
		REQ. PER UNIT	MODEL	SECTION	ASS'Y. NO.	DATE			

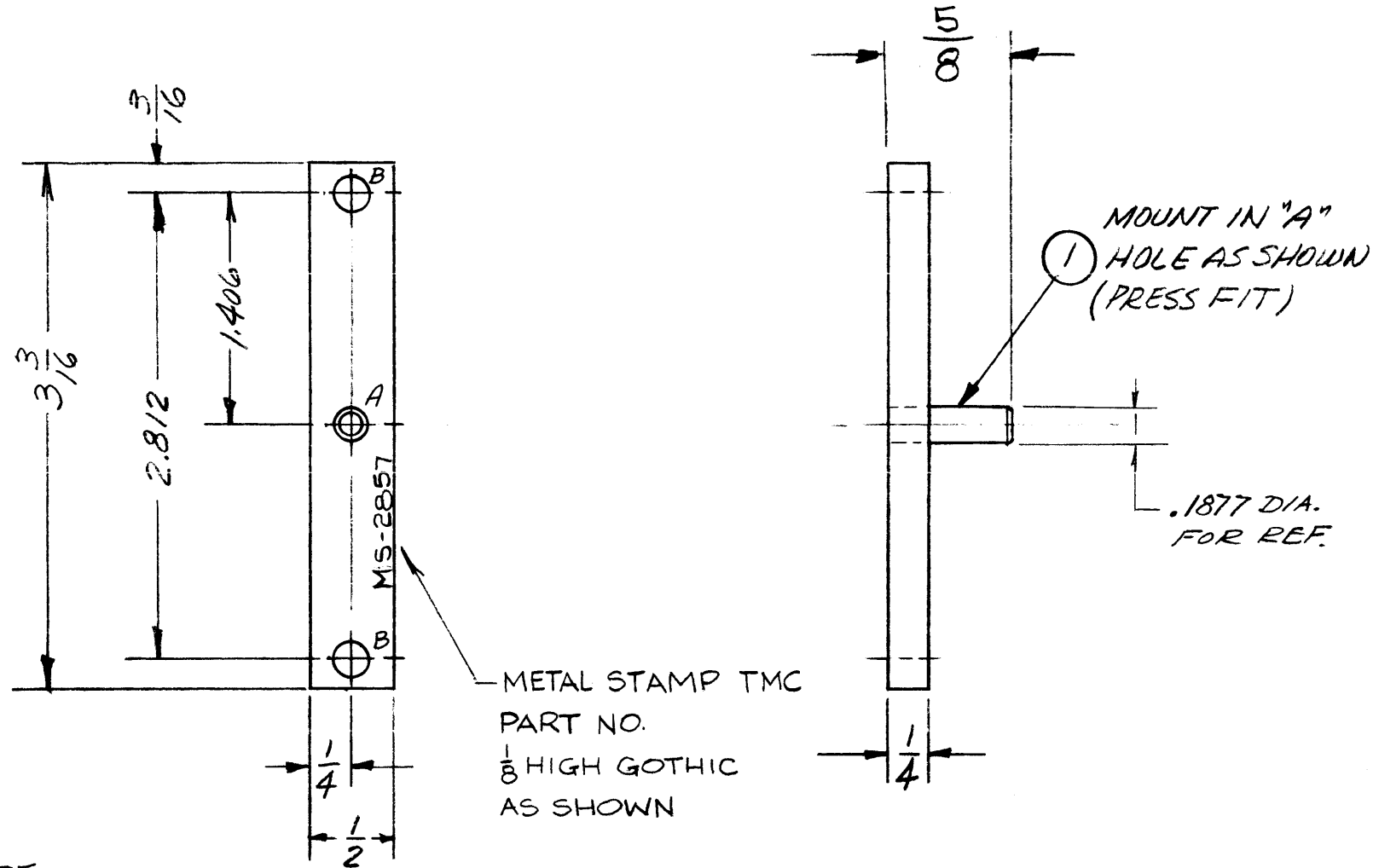
REQ.	ITEM	PART NO.	DESCRIPTION	SYMBOL
		.064 THK. STOCK SIZE	THE TECHNICAL MATERIEL CORP. MAMARONECK, NEW YORK	
		ALUMINUM		PLATE, CONTACT, BOTTOM CENTER
		5052-H32		
		5404 YELLOW IRIDITE		
			G.D.L.	
			DRAWN	
			CHECKED	
				FINAL APPROVAL
				MS-2855
				A

THE CONTENTS OF THIS DRAWING ARE THE EXCLUSIVE PROPERTY OF THE TECHNICAL MATERIEL CORP. ITS UNAUTHORIZED USE OR REPRODUCTION IN WHOLE OR IN PART IS STRICTLY FORBIDDEN.

MS-2857

LEGEND

HOLE	DESCRIPTION	QUAN
A	.185 DIA. SLIGHT CHAMFER	1
B	.205 DIA.	2



NOTE TO PERSONS RECEIVING THIS DRAWING
 THE TECHNICAL MATERIEL CORPORATION claims
 property in this drawing and is not responsible for
 its use by anyone other than the person to whom
 it is issued. The user of this drawing is advised
 that the user is to be held responsible for any
 errors or omissions in this drawing and for any
 consequences resulting therefrom.

NOTE:
 S404 YEL IRIDITE
 BEFORE ASSEMBLING
 WITH DOWEL PIN.

1	1	PN-11685S	PIN, DOWEL		
REQ.	ITEM	PART NO.	J. ANGER	DESCRIPTION	SYMBOL
STOCK SIZE			THE TECHNICAL MATERIEL CORP. MAMARONECK, NEW YORK		
ALUMINUM			PLATE, MTG, DOWEL PIN		
MATERIAL					
2024-T4			AE	NO	BP
TYPE & TEMPER		HEAT TREAT. SPEC.	DRAWN	CHECKED	FINAL APPROVAL
SEE NOTE			J. ANGER		MS-2857
FINISH & SPEC. NO.			ELEC. DES. APP.	MECH. DES. APP.	

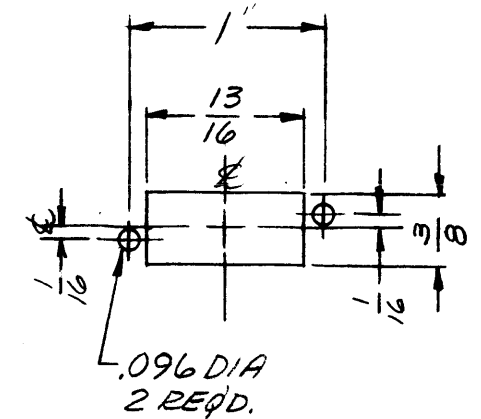
SYM	DESCRIPTION	DATE	CH. NO.	DRAFTS	CHECKER	ENG. APP.
UNLESS OTHERWISE SPECIFIED:		SCALE:				
DIMENSIONS ARE IN INCHES		MAXIMUM ALLOWABLE TOLERANCES HAVE BEEN DETERMINED AND ANY DEVIATIONS WILL BE CAUSE FOR REJECTION.				
TOLERANCES ON FRACTIONS ± 1/64 DECIMALS ± .005 ANGLES ± 1/2°		REMOVE ALL BURRS AND SHARP EDGES				
REQ. PER UNIT	MODEL	SECTION	ASS'Y. NO.	DATE		
1	HER-111		A-3042	1-22-62		
USED ON						

MS-2859 B

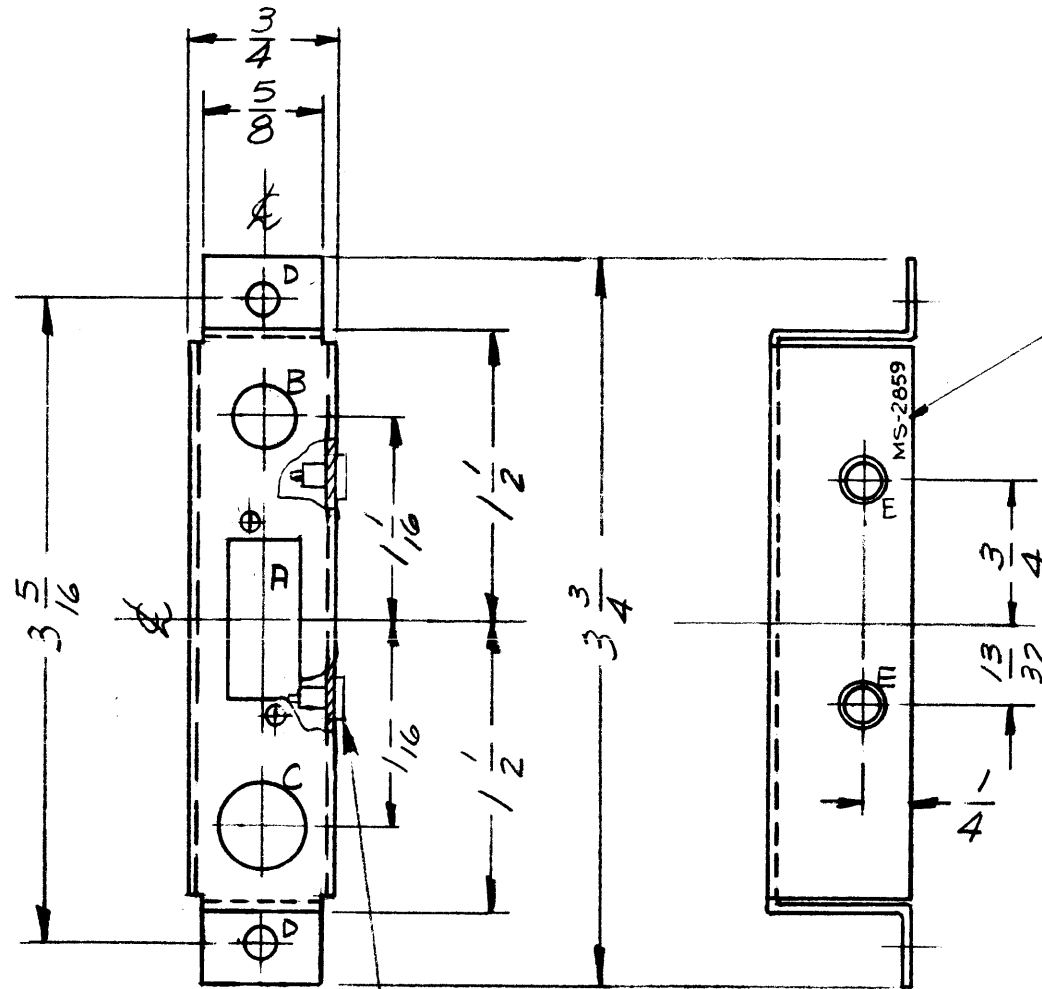
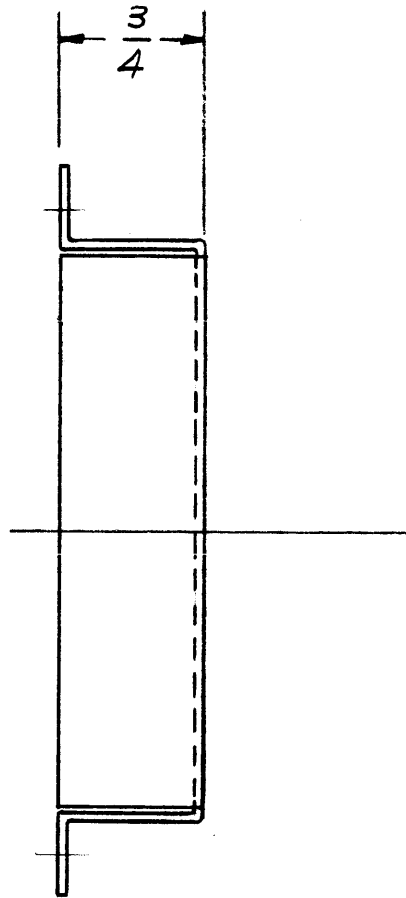
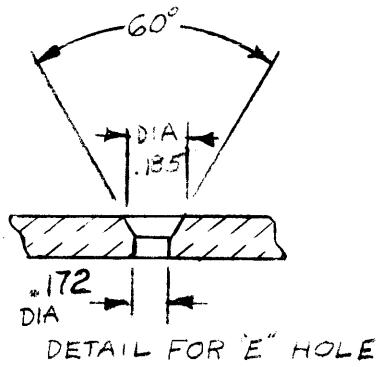
THE CONTENTS OF THIS DRAWING ARE THE EXCLUSIVE PROPERTY OF THE TECHNICAL MATERIEL CORP. ITS UNAUTHORIZED USE OR REPRODUCTION IN WHOLE OR IN PART IS STRICTLY FORBIDDEN.

HOLE LEGEND

- A - SEE DETAIL 1 REQ'D.
- B - 5/16 DIA. 1 REQ'D.
- C - .434 DIA. 1 REQ'D.
- D - 5/32 DIA. 2 REQ'D.
- E - SEE DETAIL E 2 REQ'D.



DETAIL "A"; 1 REQ'D.



METAL STAMP TMC PART NO. 1/8" HIGH WITH LATEST REVISION LETTER.

1. USE MATERIAL THICKNESS FOR MAXIMUM RADIUS ON ALL BENDS
2. ALL ANGULAR BENDS 90 DEGREES
3. REMOVE ALL BURRS AND SHARP EDGES
4. MOUNT INSERTS AFTER FINISHING

① MOUNT IN ALL "E" HOLES

REF: LD1129

B	DETAIL "E" ADDED IT 1 MT'D SHOWN IN PROPER LOCATION. "E" WAS .172 DIA. C'S SINK 60°	7/21/65	14512	ZV	QCB	SP
A	METAL STAMP NOTE UPDATED "E" HOLES WERE .172 DIA. ITEM (1) ADDED	8-6-64	12046		NO	
SYM	DESCRIPTION	DATE	CH. NO.	DRAFTS	CHECKER	ENG. APP.

UNLESS OTHERWISE SPECIFIED:
 DIMENSIONS ARE IN INCHES
 TOLERANCES ON FRACTIONS ± 1/64 DECIMALS ± .05 ANGLES ± 1/2°

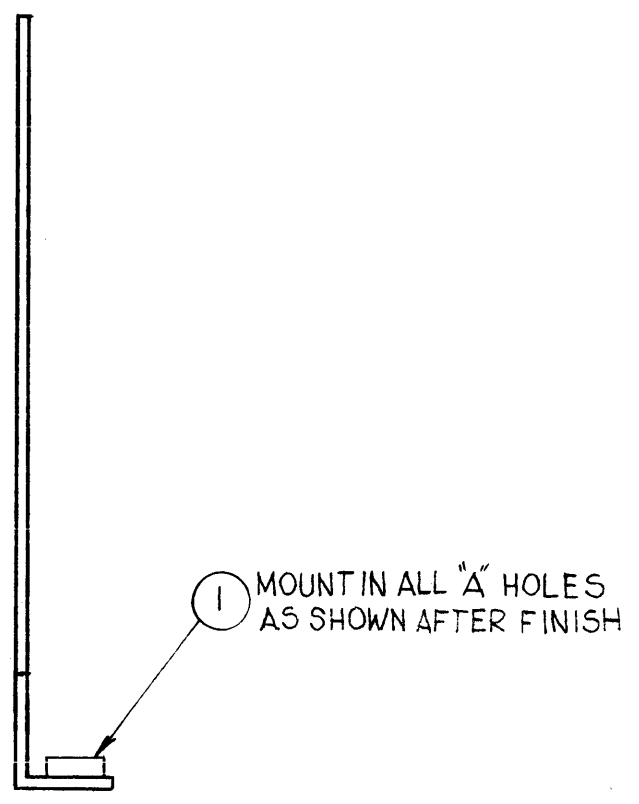
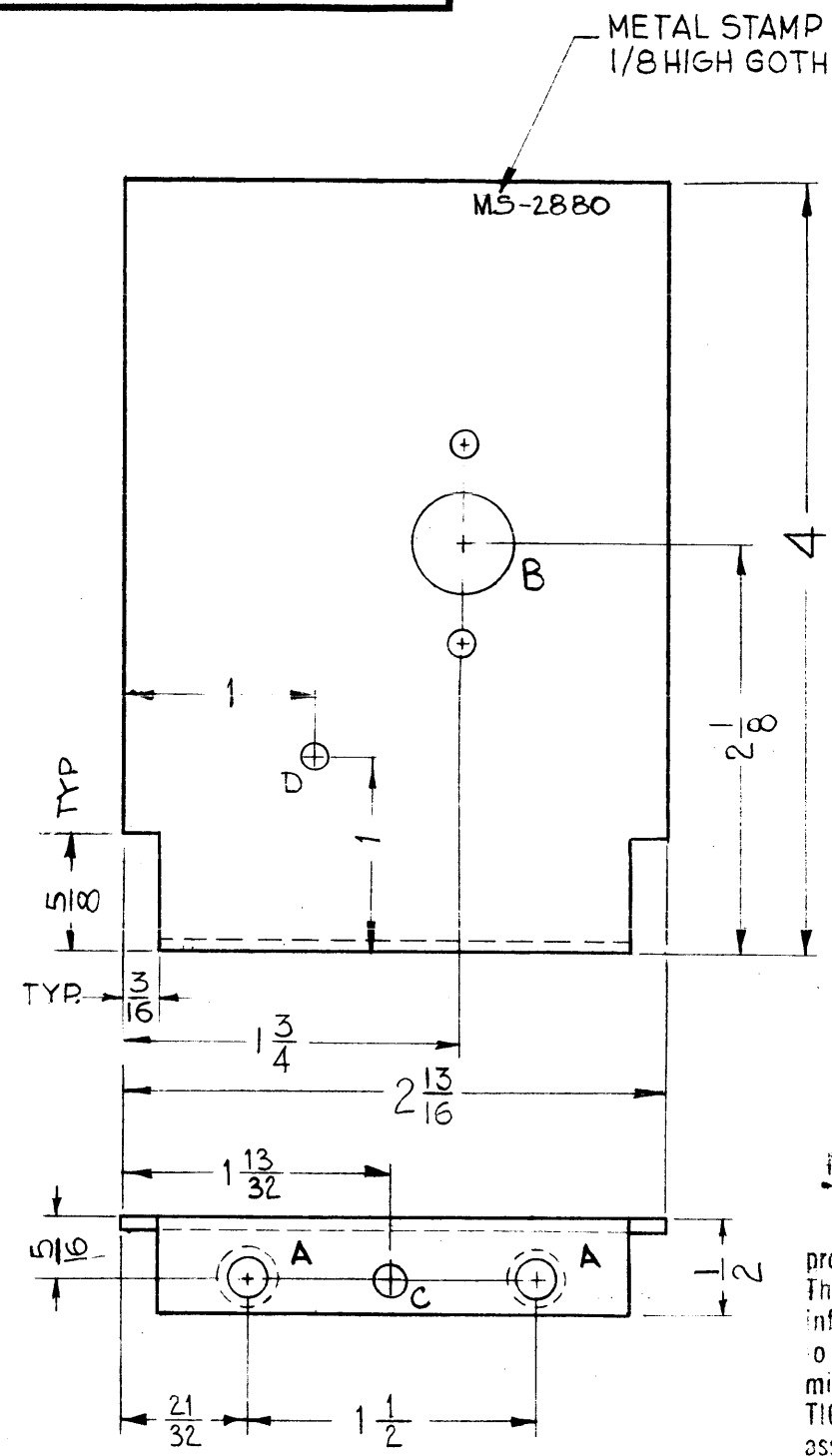
SCALE:
 MAXIMUM ALLOWABLE TOLERANCES HAVE BEEN DETERMINED AND ANY DEVIATIONS WILL BE CAUSE FOR REJECTION.
 REMOVE ALL BURRS AND SHARP EDGES

1	HFR-1/T	A-3041	2-7-62
REQ. PER UNIT	MODEL	SECTION	ASSY. NO. DATE

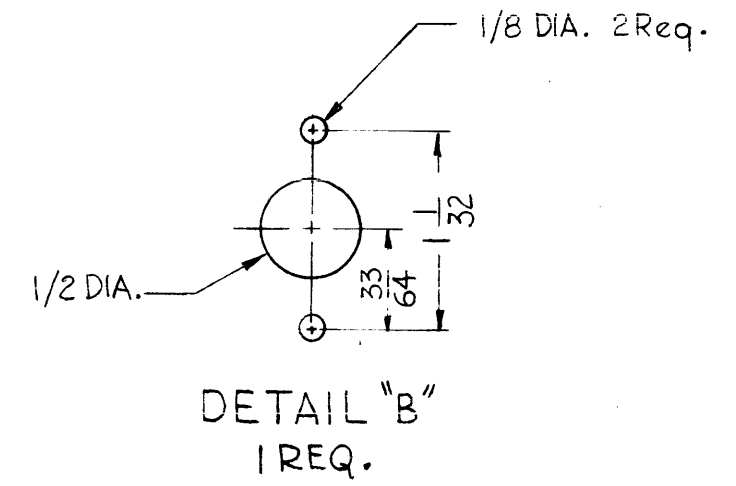
2	1	TE192A3R9	TERMINAL, STUD, INSULATED	E
REQ.	ITEM	PART NO.	DESCRIPTION	SYMBOL
		.051 THK.	THE TECHNICAL MATERIEL CORP. MAMARONECK, NEW YORK	
		ALUMINUM	BRACKET, MTG., ANTENNA INPUT	
		5052H32	ar R1220 BP	
		S404-YEL. IRIDITE	J. ANGER	
			MS-2859	B

MS-2880 B

THE CONTENTS OF THIS DRAWING ARE THE EXCLUSIVE PROPERTY OF THE TECHNICAL MATERIEL CORP. ITS UNAUTHORIZED USE OR REPRODUCTION IN WHOLE OR IN PART IS STRICTLY FORBIDDEN.



LEGEND		
HOLE	DESCRIPTION	REQ.
A	.191 - .194 DIA.	2
B	SEE DETAIL	1
C	11/64 DIA.	1
D	1/8 DIA.	1



NOTICE TO PERSONS RECEIVING THIS DRAWING

THE TECHNICAL MATERIEL CORPORATION claims proprietary right in the material disclosed herein. This drawing is issued in confidence for engineering information only and may not be reproduced or used to manufacture anything shown hereon without permission from THE TECHNICAL MATERIEL CORPORATION to the user. This drawing is loaned for mutual assistance and is subject to recall at any time.

Property of:
THE TECHNICAL MATERIEL CORPORATION
MAMARONECK, NEW YORK

USE MATERIAL THICKNESS FOR MAX. RADIUS ON ALL BENDS UNLESS OTHERWISE SPECIFIED

REF: LD-1100 (1) FOR HFS-1, SECTION AX-387 ONLY

SYM	DESCRIPTION	DATE	CH. NO.	DRAFTS	CHECKER	ENG. APP.
B	DIM 5/8 WAS 9/16	5-29-67	18254	G.D.L.		
A	USED ON CHART & REF. CLARIFIED	4-4-63	8699			

UNLESS OTHERWISE SPECIFIED:
DIMENSIONS ARE IN INCHES
TOLERANCES ON FRACTIONS ± 1/64 DECIMALS ± .005 ANGLES ± 1/2°

SCALE: DO NOT SCALE
MAXIMUM ALLOWABLE TOLERANCES HAVE BEEN DETERMINED AND ANY DEVIATIONS WILL BE CAUSE FOR REJECTION.
REMOVE ALL BURRS AND SHARP EDGES

REQ. PER UNIT	MODEL	SECTION	LD. NO.	DATE
1	HFS-1	AX-387	LD-1100	8-15-62
3	HFS-1	AX-384, 5, 6	NO LD	

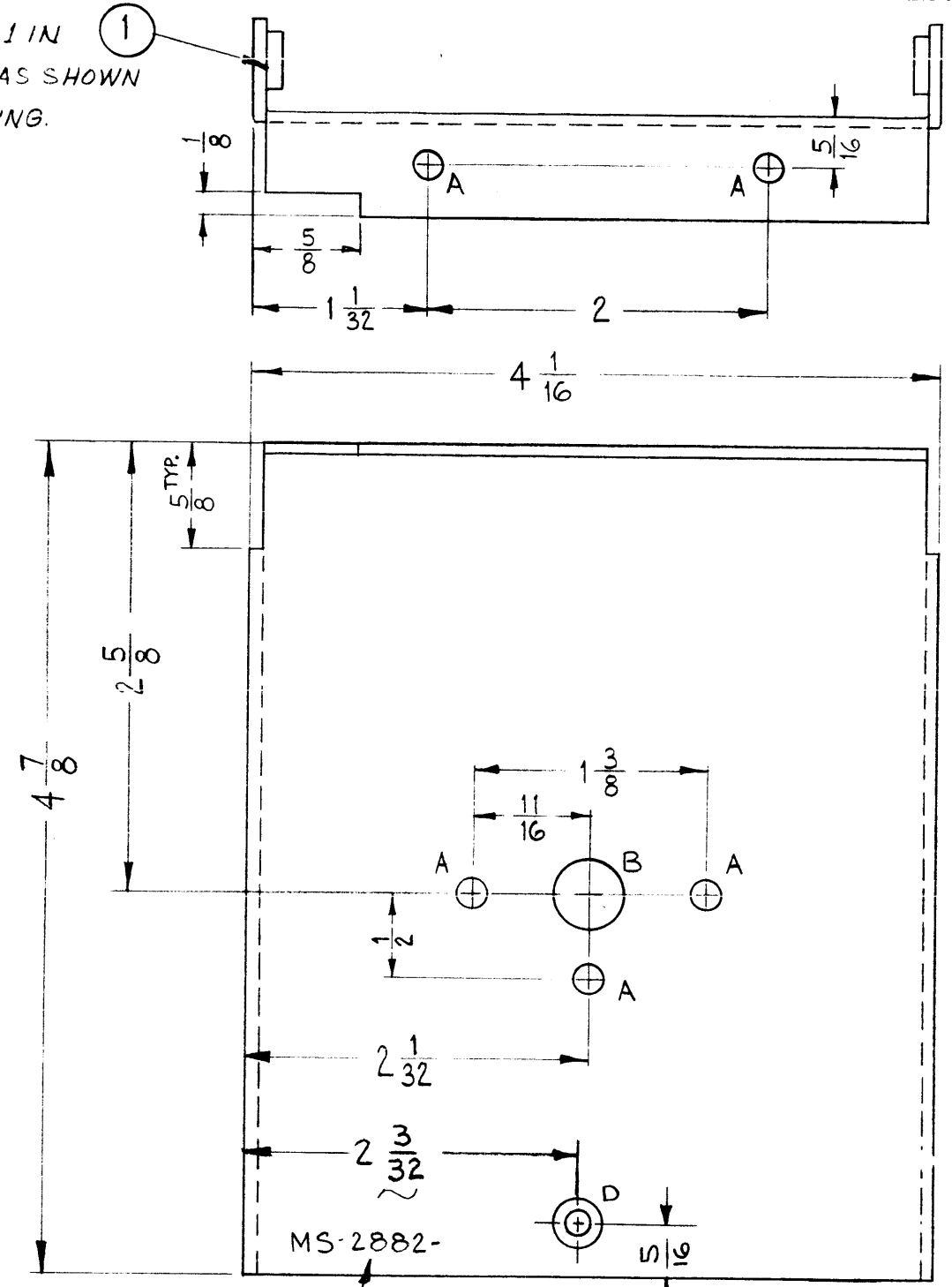
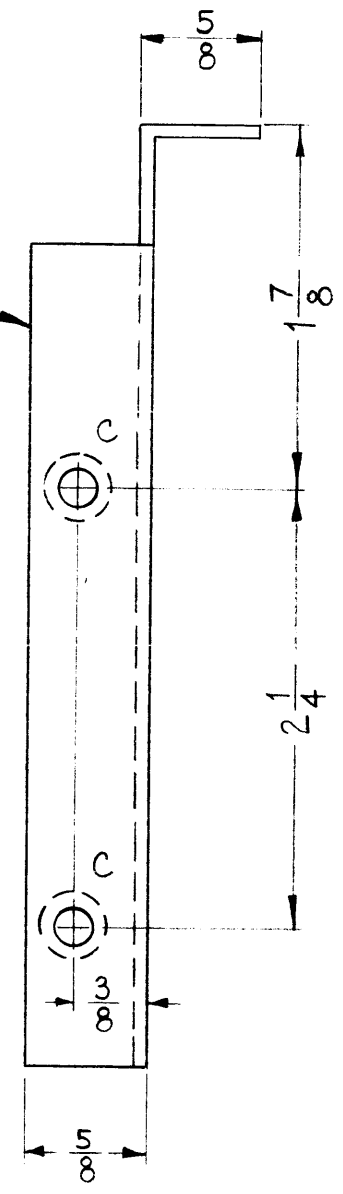
REQ.	ITEM	PART NO.	J. STRUMMER DESCRIPTION	SYMBOL
2	1	NT-129-632-4	NUT, ROUND, SWAGE TYPE	A
		.064 THK. STOCK SIZE	THE TECHNICAL MATERIEL CORP. MAMARONECK, NEW YORK	
		ALUMINUM	SHIELD, MOUNTING, SWITCH	
		3052-H-32	G.D.L. <i>JDe</i>	<i>BP</i>
		5404 YELLOW IRIDITE	<i>JMA</i>	<i>JMA</i>

USED ON: MS-2880 B

MS-2882

THE CONTENTS OF THIS DRAWING ARE THE EXCLUSIVE PROPERTY OF THE TECHNICAL MATERIEL CORP. ITS UNAUTHORIZED USE OR REPRODUCTION IN WHOLE OR IN PART IS STRICTLY FORBIDDEN.

MOUNT ITEM 1 IN ALL "C" HOLES AS SHOWN AFTER FINISHING.



LEGEND		
HOLE	DESCRIPTION	REQ.
A	11/64 DIA.	5
B	13/32 DIA.	1
C	.191-.194 DIA.	4
D	.144 DIA HOLE, C'SINK 82° To .284 DIA	1

NOTICE TO BUYER:
THE TECHNICAL MATERIEL CORPORATION claims proprietary right in the intellectual disclosed herein. This drawing is issued in confidence for engineering information only and may not be reproduced or used for manufacturing purposes shown hereon without permission from THE TECHNICAL MATERIEL CORPORATION. The user of this drawing is bound for mutual assistance to the extent of the patent at any time.

THE TECHNICAL MATERIEL CORPORATION
MAMARONECK, NEW YORK

THICKNESS FOR MAX. RADIUS ON ALL BENDS UNLESS OTHERWISE SPECIFIED

SYM	DESCRIPTION	DATE	CH. NO.	DRAFTS	CHECKER	ENG. APP.
B	'D' HOLE RELOCATED	10-7-66	17003	G.D.L.	[Signature]	[Signature]
A	(1) "D" HOLE ADDED	12/24/63	10665	[Signature]	[Signature]	[Signature]

UNLESS OTHERWISE SPECIFIED:
DIMENSIONS ARE IN INCHES
TOLERANCES ON FRACTIONS ± 1/64 DECIMALS ± .005 ANGLES ± 1/2°

SCALE: DO NOT SCALE
MAXIMUM ALLOWABLE TOLERANCES HAVE BEEN DETERMINED AND ANY DEVIATIONS WILL BE CAUSE FOR REJECTION. REMOVE ALL BURRS AND SHARP EDGES

REF: LD-1103 (2)

4	1	NT-129-632-4	NUT, ROUND, SWAGE TYPE	C
REQ.	ITEM	PART NO.	J. STRUMMER DESCRIPTION	SYMBOL
.064			THE TECHNICAL MATERIEL CORP. MAMARONECK, NEW YORK	
ALUMINUM			PLATE, FRONT, SWITCH MOUNTING (3500 DECK)	
5052-H32			[Signature]	[Signature]
S404-YEL IRIDITE			[Signature]	[Signature]

1	HFS-1	SYNTH.		8-17-62
REQ. PER UNIT	MODEL	SECTION	ASS'Y. NO.	DATE
USED ON				

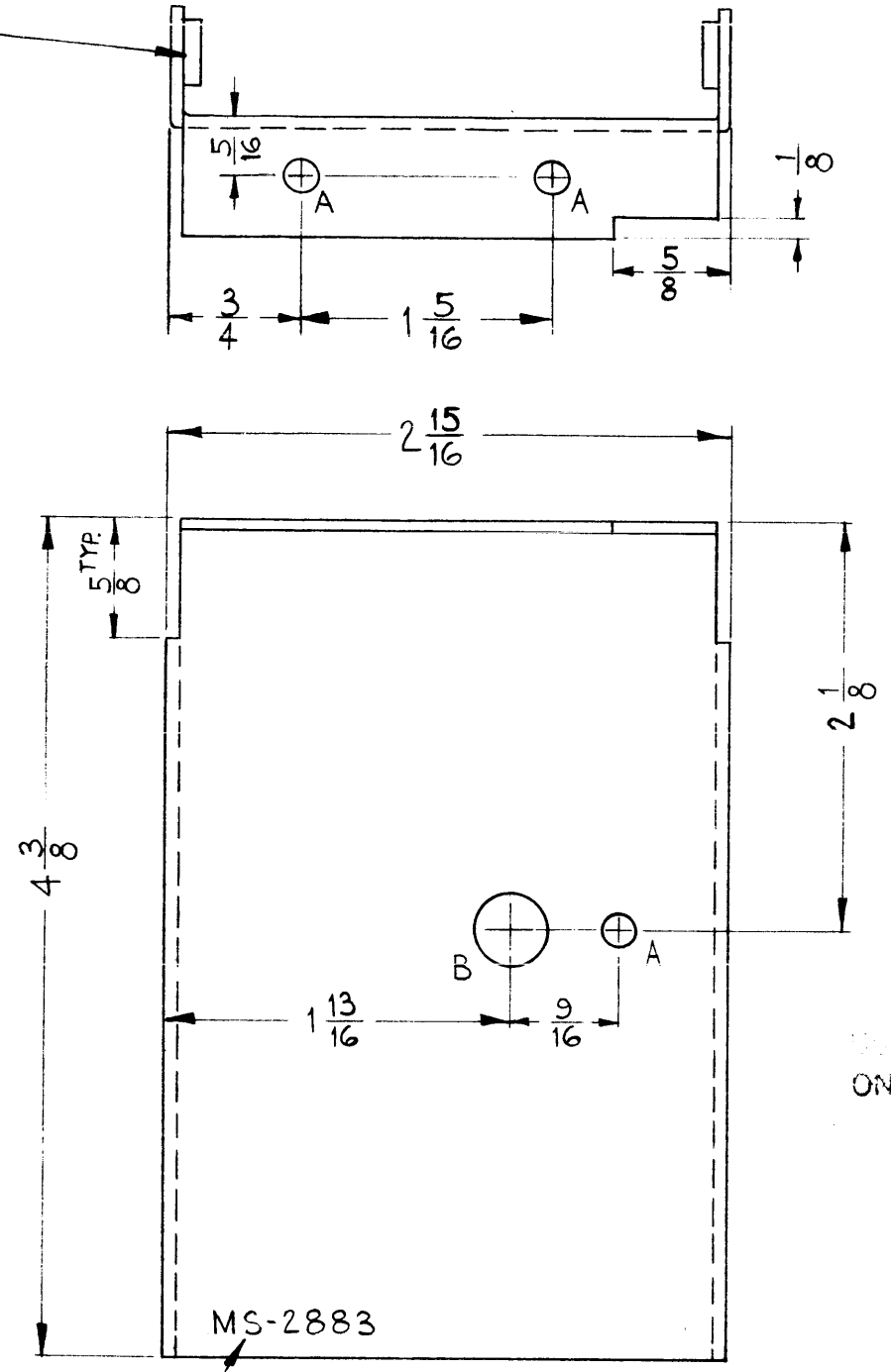
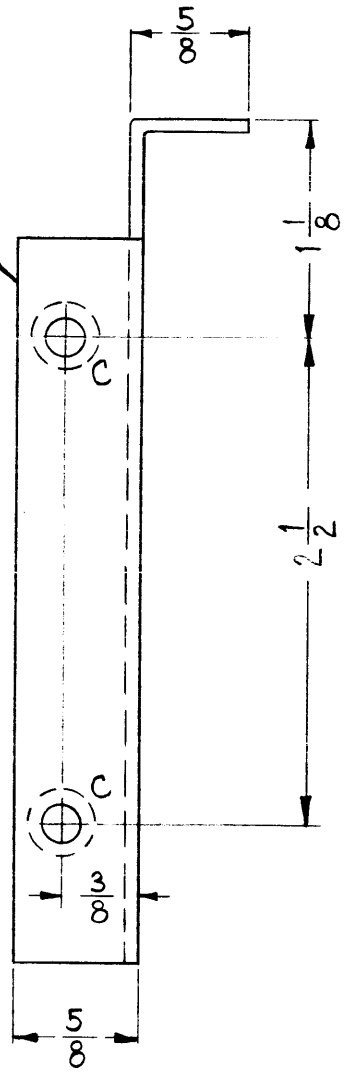
MS-2883

THE CONTENTS OF THIS DRAWING ARE THE EXCLUSIVE PROPERTY OF THE TECHNICAL MATERIEL CORP. ITS UNAUTHORIZED USE OR REPRODUCTION IN WHOLE OR IN PART IS STRICTLY FORBIDDEN.

MOUNT ITEM 1 IN ALL "C" HOLES AS SHOWN AFTER FINISHING.

LEGEND		
HOLE	DESCRIPTION	REQ.
A	11/64 DIA.	3
B	3/8 DIA.	1
C	.191-.194 DIA.	4

OPPOSITE SIDE IDENTICAL



USE MATERIAL THICKNESS FOR MAX. RADIUS ON ALL BENDS UNLESS OTHERWISE SPECIFIED

REF: DWGS

- LD-1085
- LD-1089
- LD-1090

METAL STAMP TMC PART NO. 1/8 HIGH GOTHIC.

NOTICE: THE CONTENTS OF THIS DRAWING ARE THE EXCLUSIVE PROPERTY OF THE TECHNICAL MATERIEL CORP. THIS DRAWING IS ISSUED FOR INFORMATION ONLY AND IS NOT TO BE USED FOR MANUFACTURE OR REPRODUCTION WITHOUT PERMISSION FROM THE TECHNICAL MATERIEL CORP. FOR ASSISTANCE AND INFORMATION, CONTACT THE TECHNICAL MATERIEL CORPORATION, MAMARONECK, N.Y.

4	1	NT-129-632-4	NUT, ROUND, SWAGE TYPE	C
REQ. ITEM	PART NO.		J. STRUMMER DESCRIPTION	SYMBOL
.064			THE TECHNICAL MATERIEL CORP. MAMARONECK, NEW YORK	
STOCK SIZE			PLATE, FRONT, SWITCH MOUNTING (3100 THRU 3300 DECK)	
ALUMINUM			MATERIAL	
5052-H32			TYPE & TEMPER	
S404 YEL. IRIDITE			HEAT TREAT. SPEC.	
FINISH & SPEC. NO.			ELEC. DES. APP. MECH. DES. APP.	

SYM	DESCRIPTION	DATE	CH. NO.	DRAFTS	CHECKER	ENG. APP.
UNLESS OTHERWISE SPECIFIED:		SCALE: DO NOT SCALE				
DIMENSIONS ARE IN INCHES		MAXIMUM ALLOWABLE TOLERANCES HAVE BEEN DETERMINED AND ANY DEVIATIONS WILL BE CAUSE FOR REJECTION.				
TOLERANCES ON FRACTIONS ± 1/64		REMOVE ALL BURRS AND SHARP EDGES				
DECIMALS ± .005		3	HFS-1	SYNTH.	8-15-62	
ANGLES ± 1/2°		REQ. PER UNIT	MODEL	SECTION	ASS'Y. NO.	DATE
		USED ON				

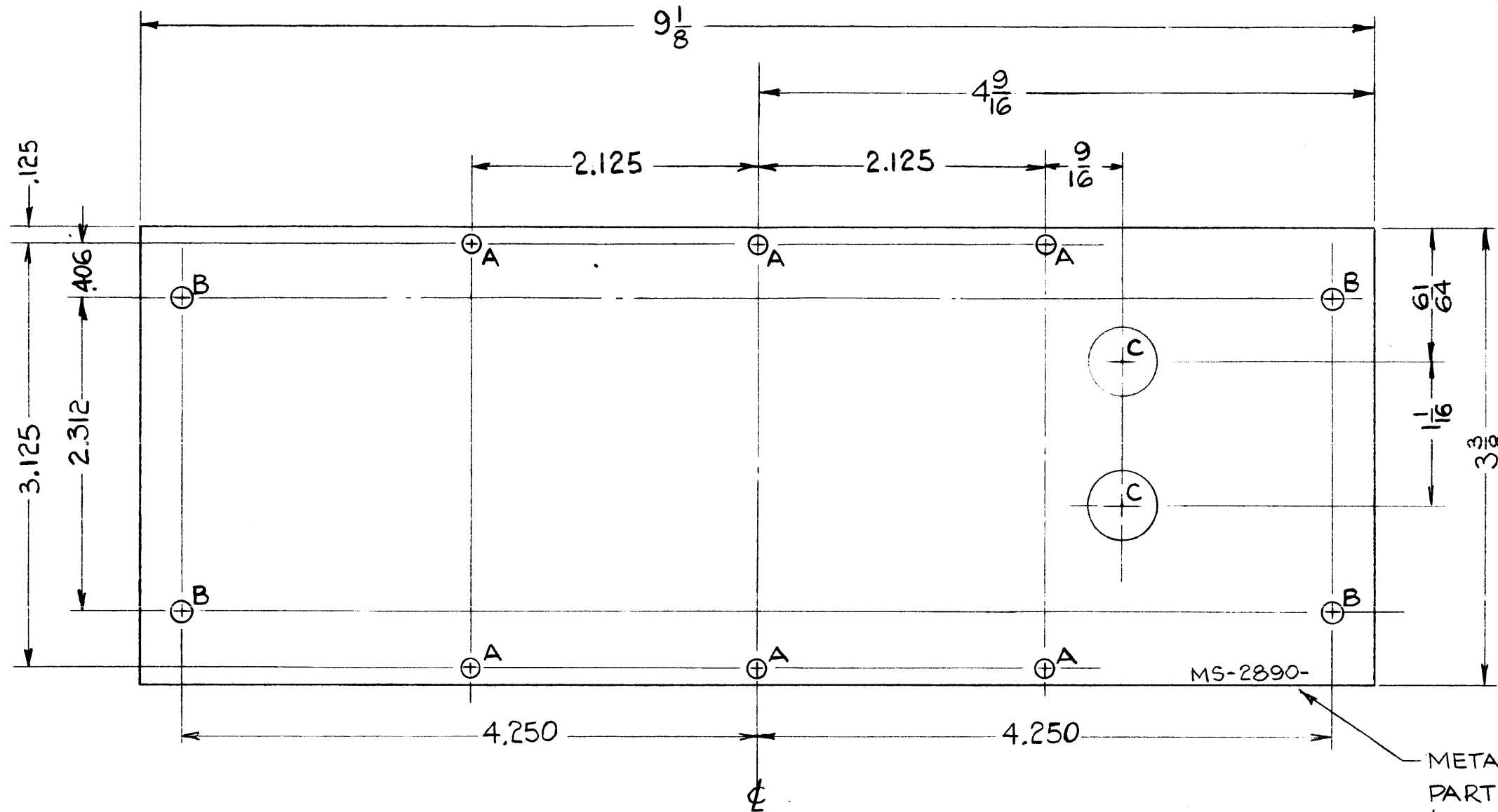
A

MS-2890

THE CONTENTS OF THIS DRAWING ARE THE EXCLUSIVE PROPERTY OF THE TECHNICAL MATERIEL CORP. ITS UNAUTHORIZED USE OR REPRODUCTION IN WHOLE OR IN PART IS STRICTLY FORBIDDEN.

LEGEND

HOLE	DESCRIPTION	QUAN.
A	9/64 DIA	6
B	5/32 DIA.	4
C	1/2 DIA	2



NOTICE: This drawing is the property of THE TECHNICAL MATERIEL CORP. and is loaned to you for your information only. It is not to be reproduced, copied, or used in any way without the written permission of THE TECHNICAL MATERIEL CORP. If you have any questions, please contact THE TECHNICAL MATERIEL CORP. for assistance and information.

THE TECHNICAL MATERIEL CORP.
MAMARONECK, NEW YORK

MS-2890-

METAL STAMP TMC
PART NO.
1/8 HIGH GOTHIC AS SHOWN

A	TYPE & TEMPER WAS 5052-HZ	7-25-62	6961	SR6	V.R.R.	BP
SYM	DESCRIPTION	DATE	CH. NO.	DRAFTS	CHECKER	ENG. APP.
UNLESS OTHERWISE SPECIFIED:		SCALE: 1:1				
DIMENSIONS ARE IN INCHES		MAXIMUM ALLOWABLE TOLERANCES HAVE BEEN DETERMINED AND ANY DEVIATIONS WILL BE CAUSE FOR REJECTION.				
TOLERANCES ON FRACTIONS ± 1/64 DECIMALS ± .05 ANGLES ± 1/2°		REMOVE ALL BURRS AND SHARP EDGES				

1	HFR-1/T				
REQ. PER UNIT	MODEL	SECTION	ASS'Y. NO.	DATE	
			A2532	6-30-61	

REQ.	ITEM	PART NO.	J. ANGER	DESCRIPTION	SYMBOL
		1/16 THK		THE TECHNICAL MATERIEL CORP.	
		STOCK SIZE		MAMARONECK, NEW YORK	
		ALUMINUM		COVER, TOP, INSIDE OVEN	
		MATERIAL			
		5052 H32	V.R.R.	BP	
		TYPE & TEMPER	DRAWN	CHECKED	FINAL APPROVAL
		S404 YEL. IRIDITE	J. ANGER		MS-2890
		FINISH & SPEC. NO.	ELEC. DES. APP.	MECH. DES. APP.	A

