

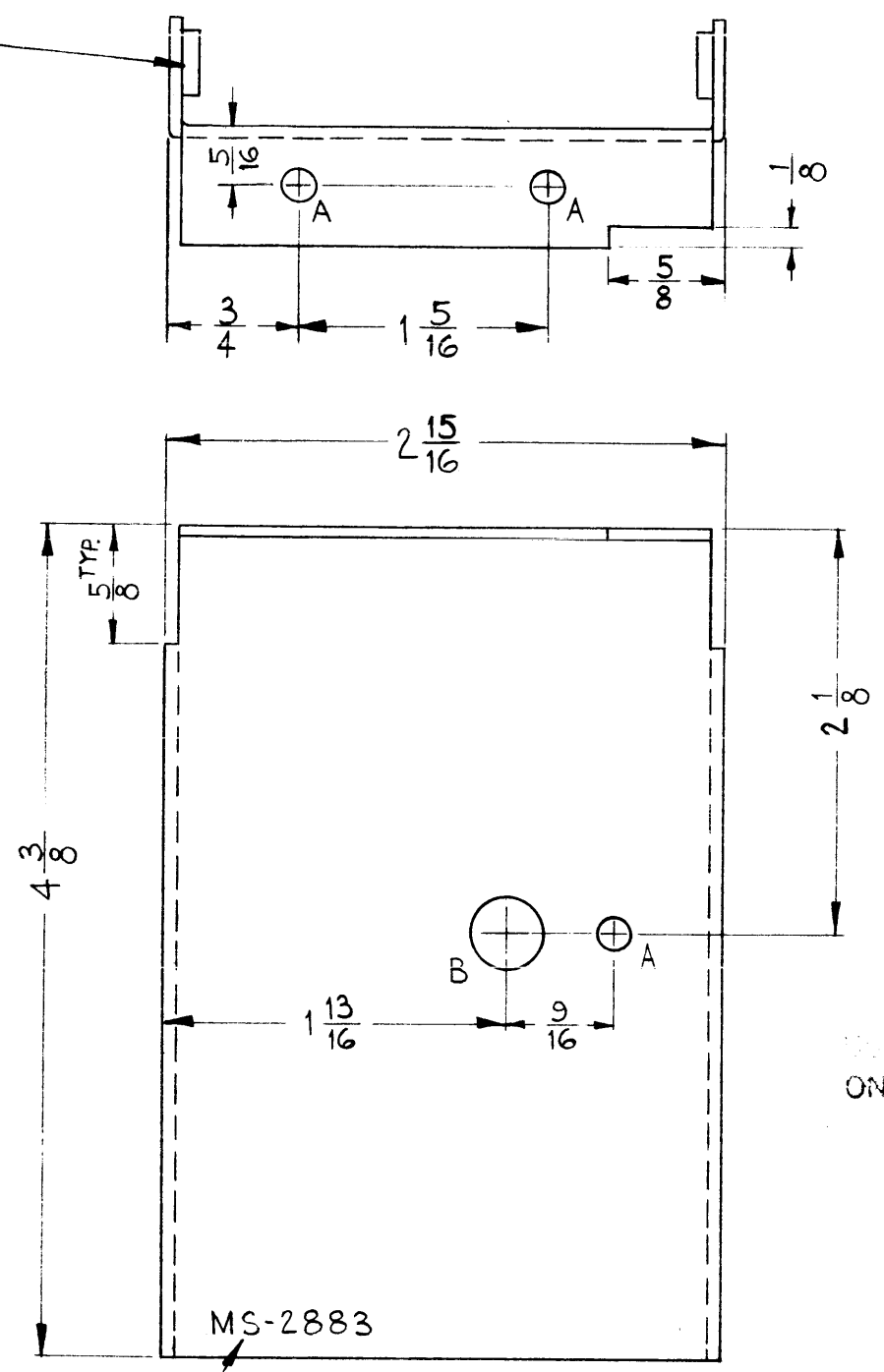
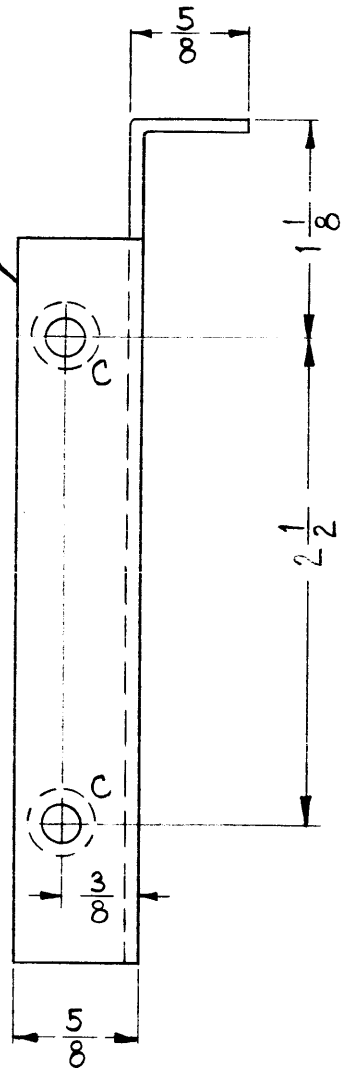
MS-2883

THE CONTENTS OF THIS DRAWING ARE THE EXCLUSIVE PROPERTY OF THE TECHNICAL MATERIEL CORP. ITS UNAUTHORIZED USE OR REPRODUCTION IN WHOLE OR IN PART IS STRICTLY FORBIDDEN.

MOUNT ITEM 1 IN ALL "C" HOLES AS SHOWN AFTER FINISHING.

LEGEND		
HOLE	DESCRIPTION	REQ.
A	11/64 DIA.	3
B	3/8 DIA.	1
C	.191-.194 DIA.	4

OPPOSITE SIDE IDENTICAL



USE MATERIAL THICKNESS FOR MAX. RADIUS ON ALL BENDS UNLESS OTHERWISE SPECIFIED

REF: DWGS

- LD-1085
- LD-1089
- LD-1090

NOTICE: THE CONTENTS OF THIS DRAWING ARE THE EXCLUSIVE PROPERTY OF THE TECHNICAL MATERIEL CORP. ITS UNAUTHORIZED USE OR REPRODUCTION IN WHOLE OR IN PART IS STRICTLY FORBIDDEN.

THE TECHNICAL MATERIEL CORPORATION
MAMARONECK, N.Y.

METAL STAMP TMC PART NO. 1/8 HIGH GOTHIC.

4	1	NT-129-632-4	NUT, ROUND, SWAGE TYPE	C
REQ. ITEM	PART NO.		J. STRUMMER DESCRIPTION	SYMBOL
.064			THE TECHNICAL MATERIEL CORP.	
STOCK SIZE			MAMARONECK, NEW YORK	
ALUMINUM			PLATE, FRONT, SWITCH MOUNTING	
MATERIAL			(3100 THRU 3300 DECK)	
5052-H32		DRAWN		FINAL APPROVAL
TYPE & TEMPER		HEAT TREAT. SPEC.		
S404 YEL. IRIDITE		DRAWN		MS-2883
FINISH & SPEC. NO.		ELEC. DES. APP.		MECH. DES. APP.

SYM	DESCRIPTION	DATE	CH. NO.	DRAFTS	CHECKER	ENG. APP.
UNLESS OTHERWISE SPECIFIED:		SCALE: DO NOT SCALE				
DIMENSIONS ARE IN INCHES		MAXIMUM ALLOWABLE TOLERANCES HAVE BEEN DETERMINED AND ANY DEVIATIONS WILL BE CAUSE FOR REJECTION.				
TOLERANCES ON FRACTIONS ± 1/64		REMOVE ALL BURRS AND SHARP EDGES				
DECIMALS ± .005		3	HFS-1	SYNTH.	8-15-62	
ANGLES ± 1/2°		REQ. PER UNIT	MODEL	SECTION	ASS'Y. NO.	DATE
		USED ON				