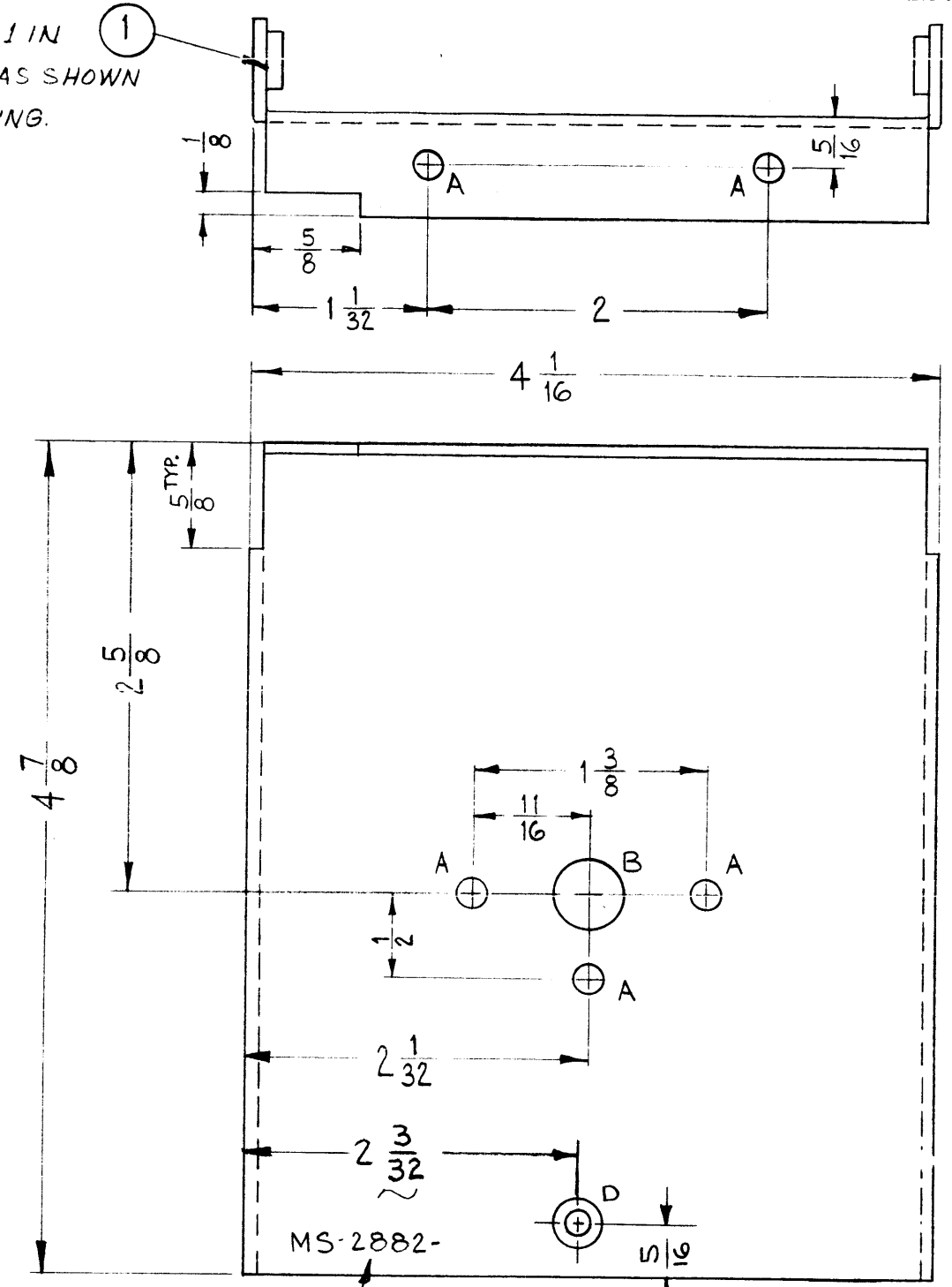
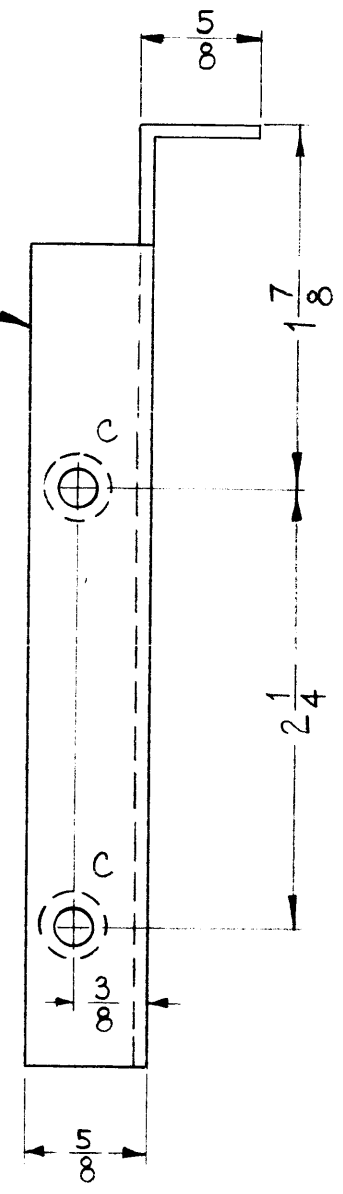


MS-2882

THE CONTENTS OF THIS DRAWING ARE THE EXCLUSIVE PROPERTY OF THE TECHNICAL MATERIEL CORP. ITS UNAUTHORIZED USE OR REPRODUCTION IN WHOLE OR IN PART IS STRICTLY FORBIDDEN.

MOUNT ITEM 1 IN ALL "C" HOLES AS SHOWN AFTER FINISHING.



LEGEND		
HOLE	DESCRIPTION	REQ.
A	11/64 DIA.	5
B	13/32 DIA.	1
C	.191-.194 DIA.	4
D	.144 DIA HOLE, C'SINK 82° To .284 DIA	1

NOTICE TO BUYER CONCERNING DRAWING

THE TECHNICAL MATERIEL CORPORATION claims proprietary right in the intellectual disclosed herein. This drawing is issued in confidence for engineering information only and may not be reproduced or used to manufacture anything shown hereon without permission from THE TECHNICAL MATERIEL CORPORATION. The user of this drawing is bound for mutual assistance to the extent of the drawing at any time.

THE TECHNICAL MATERIEL CORPORATION
MAMARONECK, NEW YORK

THICKNESS FOR MAX. RADIUS ON ALL BENDS UNLESS OTHERWISE SPECIFIED

SYM	DESCRIPTION	DATE	CH. NO.	DRAFTS	CHECKER	ENG. APP.
B	'D' HOLE RELOCATED	10-7-66	17003	G.D.L.	CLB	[Signature]
A	(1) "D" HOLE ADDED	12/24/63	10665	[Signature]	[Signature]	[Signature]

UNLESS OTHERWISE SPECIFIED:
DIMENSIONS ARE IN INCHES
TOLERANCES ON FRACTIONS ± 1/64 DECIMALS ± .005 ANGLES ± 1/2°

SCALE: DO NOT SCALE
MAXIMUM ALLOWABLE TOLERANCES HAVE BEEN DETERMINED AND ANY DEVIATIONS WILL BE CAUSE FOR REJECTION. REMOVE ALL BURRS AND SHARP EDGES

REQ. PER UNIT	MODEL	SECTION	ASS'Y. NO.	DATE
1	HFS-1	SYNTH.		8-17-62

USED ON

REQ.	ITEM	PART NO.	DESCRIPTION	SYMBOL
4	1	NT-129-632-4	NUT, ROUND, SWAGE TYPE	C
.064 STOCK SIZE				
ALUMINUM				
THE TECHNICAL MATERIEL CORP. MAMARONECK, NEW YORK				
PLATE, FRONT, SWITCH MOUNTING (3500 DECK)				
5052-H32		DRAWN [Signature] CHECKED [Signature] FINAL APPROVAL [Signature]		
S404-YEL IRIDITE		ELEC. DES. APP. [Signature] MECH. DES. APP. [Signature]		
FINISH & SPEC. NO.				MS-2882