

THE CONTENTS OF THIS DRAWING ARE THE EXCLUSIVE PROPERTY OF THE TECHNICAL MATERIEL CORP. ITS UNAUTHORIZED USE OR REPRODUCTION IN WHOLE OR IN PART IS STRICTLY FORBIDDEN.

REQ. PER UNIT

4

MODEL

HAF-1

USED ON

ASS'Y. NO.

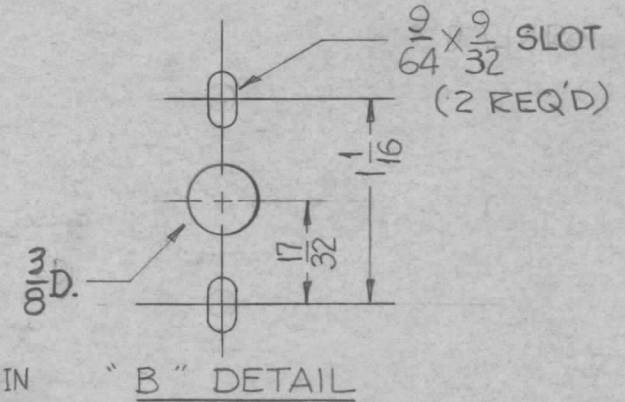
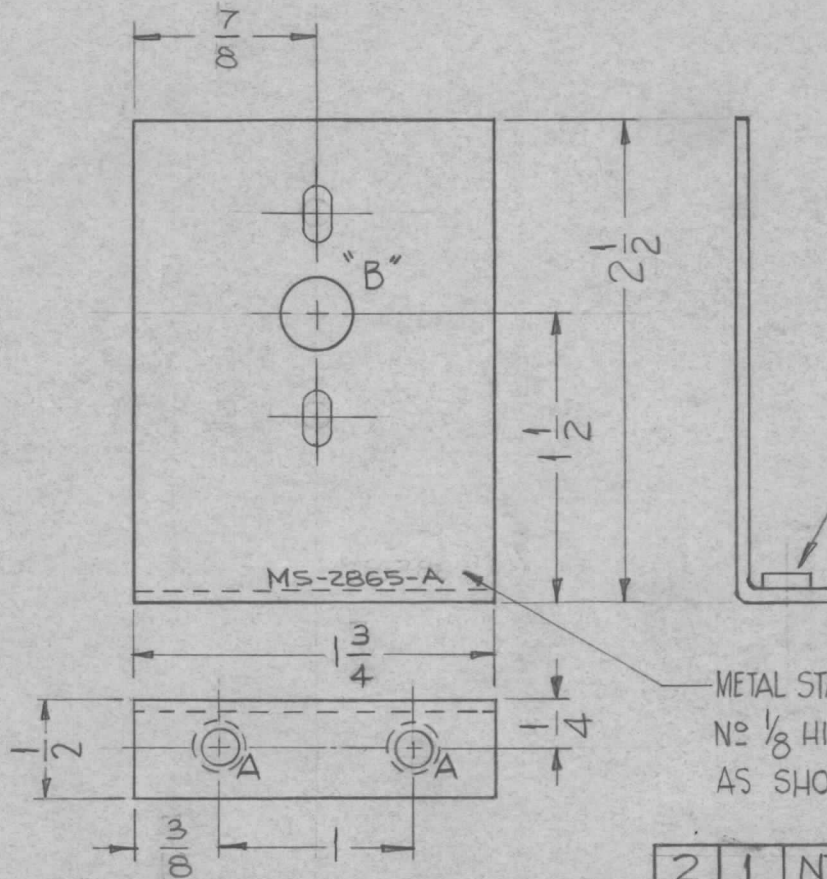
DATE

7-26-62

MS-2865

A

HOLES	DESCRIPTION	REQ.
A	.191-.194 DIA. (TO MOUNT ITEM 1)	2
B	SEE DETAIL BELOW	1



MOUNT ITEM 1 IN ALL "A" HOLES AS SHOWN, AFTER FINISHING.

UNLESS OTHERWISE SPECIFIED DIMENSIONS ARE IN INCHES AND INCLUDE CHEMICALLY APPLIED OR PLATED FINISHES		
DECIMALS	TOLERANCES	FRACTIONS
.X ± .05		± 1/64
.XX ± .01		ANGLES ± 0° 30'
.XXX ± .005		

CUT HERE GUARANTEED 2-66

USE MATERIAL THICKNESS FOR MAX. RADIUS ON ALL BENDS UNLESS OTHERWISE SPECIFIED. BLANK SIZE 2 3/32 X 1 1/8

2	1	NT-129-632-4	NUT, ROUND SWAGE TYPE	A
REQ.	ITEM	PART NO.	DESCRIPTION	SYMBOL
		.064 THK.	THE TECHNICAL MATERIEL CORP.	
		STOCK SIZE	MAMARONECK, NEW YORK	
		ALUMINUM	BRACKET, MOUNTING SWITCH	
		MATERIAL		
		5052-H32	<i>D. Mam</i>	<i>BP</i>
		TYPE & TEMPER	HEAT TREAT. SPEC.	DRAWN
		S-404-YELLOW IRIDITE		CHECKED
		FINISH & SPEC. NO.	ELEC. DES. APP.	MECH. DES. APP.
			<i>A.R. Paola</i>	
				MS-2865 A

UNLESS OTHERWISE SPECIFIED: DIMENSIONS ARE IN INCHES TOLERANCES ON FRAC. ± 1/64 DEC. ± .005 ANGLES ± 1/2°

SCALE: DO NOT SCALE
MAXIMUM ALLOWABLE TOLERANCES HAVE BEEN DETERMINED AND ANY DEVIATIONS WILL BE CAUSE FOR REJECTION. REMOVE ALL BURRS AND SHARP EDGES

A	9/64 X 9/32 SLOTS WERE 9/64 DIA HOLES	9/27/63	10079	<i>HRD</i>	<i>JAB</i>	<i>JTB</i>
SYM	DESCRIPTION	DATE	CH. NO.	DRAFTS	CHECKER	ENG. APP.