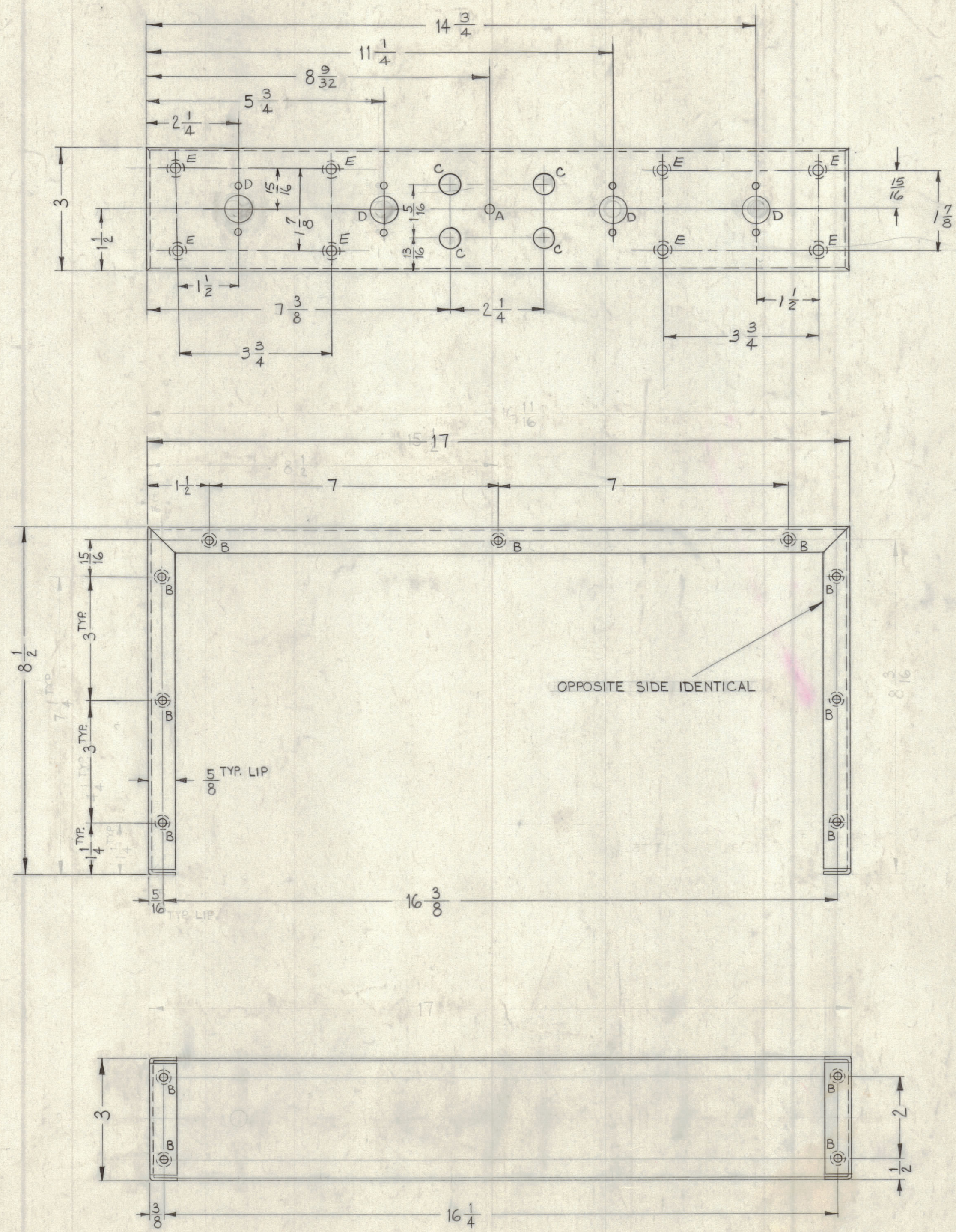
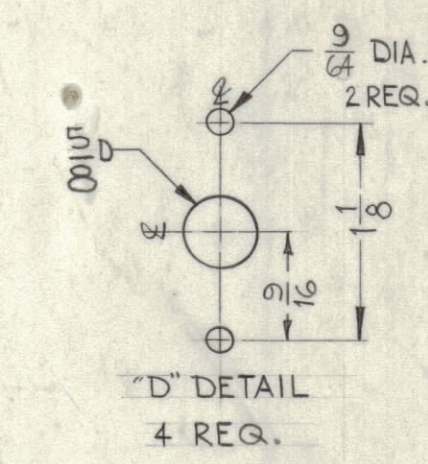
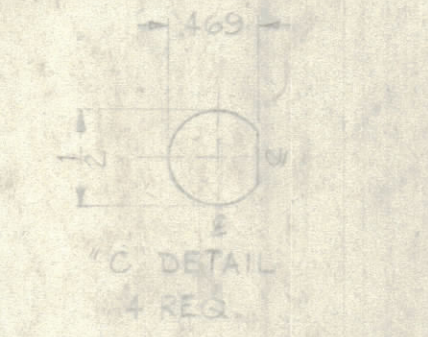


NOTICE TO PERSONS RECEIVING THIS DRAWING

THE TECHNICAL MATERIEL CORPORATION claims proprietary right in the material disclosed herein. This drawing is issued in confidence for engineering information only and may not be reproduced or used to manufacture anything shown herein without permission from THE TECHNICAL MATERIEL CORPORATION to the user. This drawing is loaned for mutual assistance and is subject to recall at any time.

Property of:
THE TECHNICAL MATERIEL CORPORATION
MAMARONECK, NEW YORK

LEGEND		
HOLE	DESCRIPTION	REQ.
A	11/64 DIA.	1
B	.191-.194 DIA.	22
C	1/2 DIA.	4
E	.221-.224 DIA	8



OPPOSITE SIDE IDENTICAL

1 MOUNT ITEM 1 IN ALL "B" HOLES AS SHOWN AFTER FINISHING.

METAL STAMP TMC PART NO. MS-2862B
1/8 HIGH GOTHIC AS SHOWN.

OPPOSITE SIDE IDENTICAL

USE MATERIAL THICKNESS FOR MAX. RADIUS ON ALL BENDS UNLESS OTHERWISE SPECIFIED.

MOUNT INSERTS AFTER FINISHING

REF: LD-1054(B)

REQ. ITEM	PART NO.	DESCRIPTION	SYMBOL
8	2	NT-129-832-4	NUT, ROUND SWAGE
22	1	NT-129-632-4	NUT, ROUND, SWAGE TYPE
.064			THE TECHNICAL MATERIEL CORP. MAMARONECK, NEW YORK
ALUMINUM			CHASSIS, ELECTRICAL EQUIPMENT WRAPAROUND
MATERIAL			
5052-H32		M.A.S.	
TYPE & TEMPER		HEAT TREAT. SPEC.	
3404 YEL. IRIDITE		A.B. Fink	
FINISH & SPEC. NO.		ELEC. DES. APP. MECH. DES. APP.	
1		MS-2862	
REQ. PER UNIT		SHEET OF	

REQ. PER UNIT	MODEL	SECTION	ASS'Y. NO.	DATE	FINISH & SPEC. NO.
1	HAF-1			7-26-62	

DECIMALS	FRACTIONS
± .05	± 1/64
± .01	ANGLES ± 30'
± .005	

SYM	ZONE	DESCRIPTION	DATE	CH. NO.	DRAFTS	CHECKER	ENG. APP.
B		CHG. MS2862 TO MS2862 B	3-19-64	11062	A.M.		
AZ		ADDED NT-129-832-4 (8) TO BUILDUP	10/14/63	10186			
FGPT		(8)" HOLES ADDED.					

UNLESS OTHERWISE SPECIFIED: SCALE DO NOT SCALE

DIMENSIONS ARE IN INCHES

TOLERANCES ON FRACTIONS ± 1/64 DECIMALS ± .005 ANGLES ± 1/2°

MAXIMUM ALLOWABLE TOLERANCES HAVE BEEN DETERMINED AND ANY DEVIATIONS WILL BE CAUSE FOR REJECTION. REMOVE ALL BURRS & SHARP EDGES

MS-2862 B