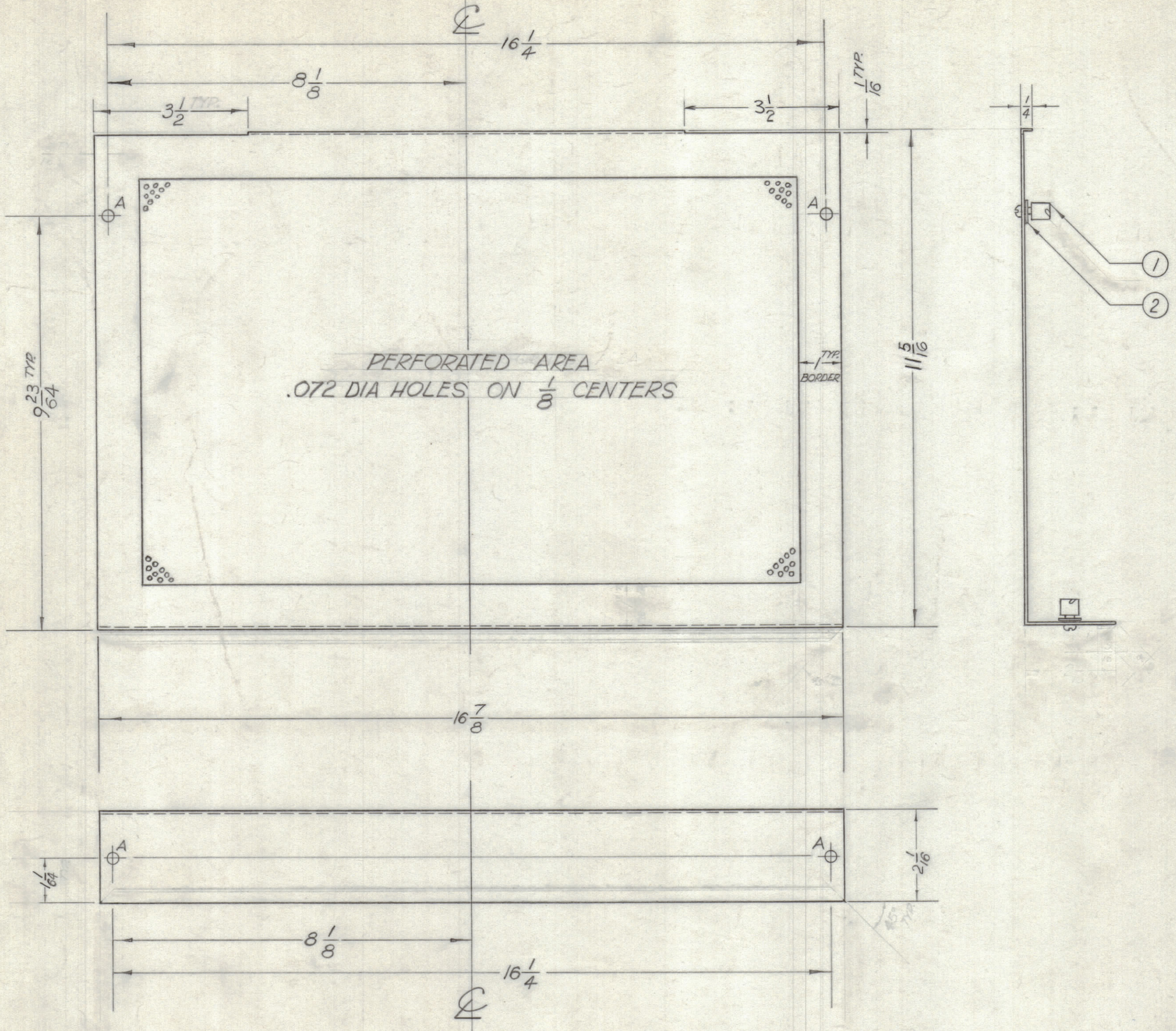


NOTICE TO PERSONS RECEIVING THIS DRAWING

THE TECHNICAL MATERIEL CORPORATION claims proprietary right in the material disclosed hereon. This drawing is issued in confidence for engineering information only and may not be reproduced or used to manufacture anything shown hereon without permission from THE TECHNICAL MATERIEL CORPORATION to the user. This drawing is loaned for mutual assistance and is not to be called at any time.

Property of:
THE TECHNICAL MATERIEL CORPORATION
MAMARONECK, NEW YORK

| LEGEND | | |
|--------|-------------|------|
| HOLE | DESCRIPTION | REQ. |
| A | 1/4 DIA | 4 |



USE MATERIAL THICKNESS FOR MAX. RADIUS, ON ALL BENDS UNLESS OTHERWISE SPECIFIED

BLANK SIZE REF: MS-1775-27, DELETED
REF. MS-1775-27

| REQ. ITEM | PART NO. | DESCRIPTION | SYMBOL |
|-----------|----------|----------------------|--------|
| 4 2 | FS-109-3 | RING, STUD RETAINING | |
| 4 1 | FS-110-1 | STUD, SLOTTED HEAD | |
| | | FAIOLA | |
| | | .051 | |
| | | STOCK SIZE | |
| | | ALUMINUM, PERF. | |
| | | MATERIAL | |
| | | 5052-H32 | |
| | | TYPE & TEMPER | |
| | | HEAT TREAT. SPEC. | |
| | | S-404 IRIDITE | |
| | | FINISH & SPEC. NO. | |

| THE TECHNICAL MATERIEL CORP. MAMARONECK, NEW YORK | | | |
|--|-----------------|----------------|--|
| COVER, TOP (HFA-1) | | | |
| DRAWN | CHECKED | FINAL APPROVAL | |
| K.C. [Signature] | [Signature] | BP | |
| Q.R.F. | | MS-2860 A | |
| ELEC. DES. APP. | MECH. DES. APP. | SHEET OF | |

| SYM | ZONE | DESCRIPTION | DATE | CH. NO. | DRAFTS | CHECKER | ENG. APP. |
|-----|------|-------------------------------------|---------|---------|--------|-------------|-------------|
| A | B2 | BLANK SIZE REF: MS-1775-27, DELETED | 4-25-63 | 8912 | gny | [Signature] | [Signature] |

UNLESS OTHERWISE SPECIFIED:
DIMENSIONS ARE IN INCHES
TOLERANCES ON
FRACTIONS ± 1/64 DECIMALS ± .005 ANGLES ± 1/2°

SCALE DO NOT SCALE.
MAXIMUM ALLOWABLE TOLERANCES HAVE BEEN DETERMINED AND ANY DEVIATIONS WILL BE CAUSE FOR REJECTION. REMOVE ALL BURRS & SHARP EDGES

| REQ. PER UNIT | MODEL | SECTION | ASS'Y. NO. | DATE |
|---------------|-------|---------|------------|---------|
| 1 | HFA-1 | | | 7-26-62 |