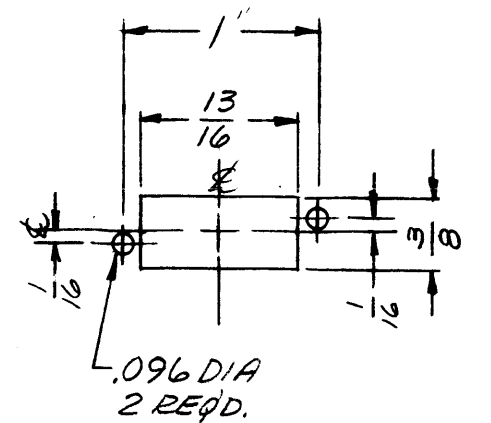


MS-2859 B

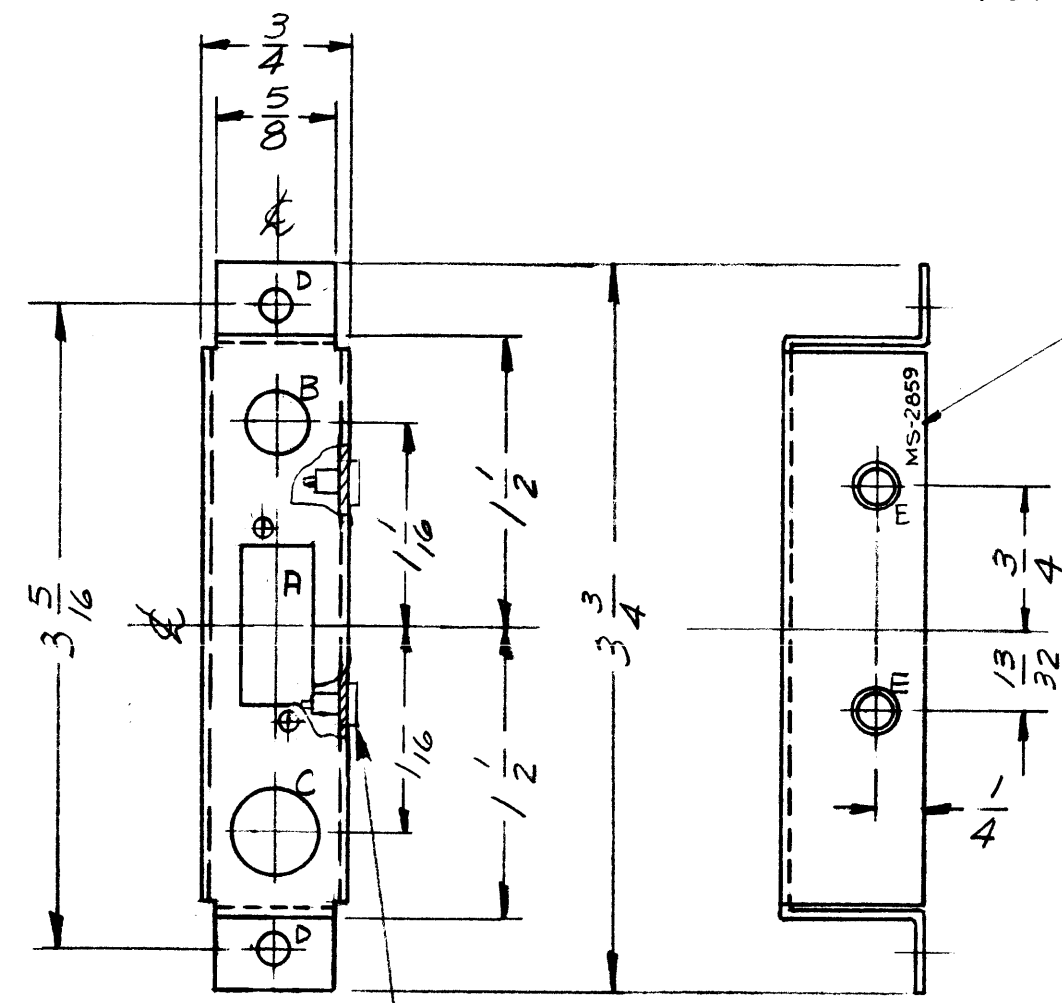
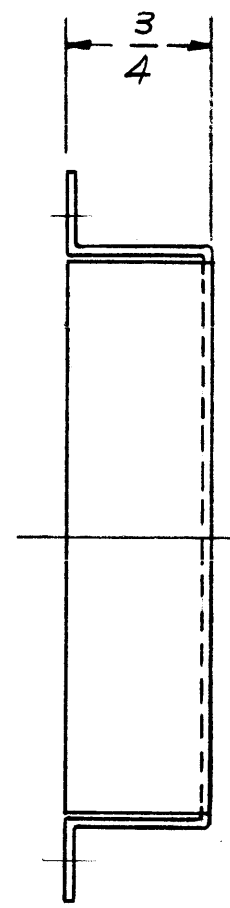
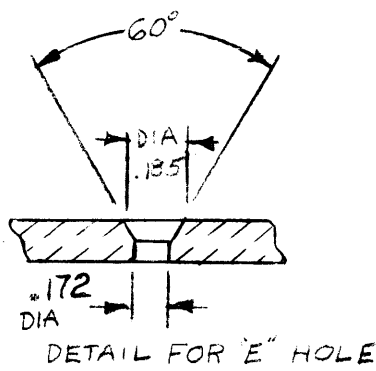
THE CONTENTS OF THIS DRAWING ARE THE EXCLUSIVE PROPERTY OF THE TECHNICAL MATERIEL CORP. ITS UNAUTHORIZED USE OR REPRODUCTION IN WHOLE OR IN PART IS STRICTLY FORBIDDEN.

HOLE LEGEND

- A - SEE DETAIL 1 REQ'D.
- B - 5/16 DIA. 1 REQ'D.
- C - .434 DIA. 1 REQ'D.
- D - 5/32 DIA. 2 REQ'D.
- E - SEE DETAIL E 2 REQ'D.



DETAIL "A"; 1 REQ'D.



METAL STAMP TMC PART NO. 1/8" HIGH WITH LATEST REVISION LETTER.

1. USE MATERIAL THICKNESS FOR MAXIMUM RADIUS ON ALL BENDS
2. ALL ANGULAR BENDS 90 DEGREES
3. REMOVE ALL BURRS AND SHARP EDGES
4. MOUNT INSERTS AFTER FINISHING

① MOUNT IN ALL "E" HOLES

REF: LD1129

B	DETAIL "E" ADDED IT 1 MT'D SHOWN IN PROPER LOCATION. "E" WAS .172 DIA. C'S SINK 60°	7/21/65	14512	AVV	QCB	SP
A	METAL STAMP NOTE UPDATED "E" HOLES WERE .172 DIA. ITEM (1) ADDED	8-6-64	12046		NO.	
SYM	DESCRIPTION	DATE	CH. NO.	DRAFTS	CHECKER	ENG. APP.

UNLESS OTHERWISE SPECIFIED:
 DIMENSIONS ARE IN INCHES
 TOLERANCES ON FRACTIONS ± 1/64 DECIMALS ± .05 ANGLES ± 1/2°
 SCALE: MAXIMUM ALLOWABLE TOLERANCES HAVE BEEN DETERMINED AND ANY DEVIATIONS WILL BE CAUSE FOR REJECTION. REMOVE ALL BURRS AND SHARP EDGES

1	HFR-1/T	A-3041	2-7-62
REQ. PER UNIT	MODEL	SECTION	ASSY. NO. DATE

2	1	TE192A3R9	TERMINAL, STUD, INSULATED	E
REQ.	ITEM	PART NO.	DESCRIPTION	SYMBOL
		.051 THK.	THE TECHNICAL MATERIEL CORP. MAMARONECK, NEW YORK	
		ALUMINUM	BRACKET, MTG., ANTENNA INPUT	
		5052H32	ar R1220 BP	
		S404-YEL. IRIDITE	J. ANGER	
			MS-2859	B