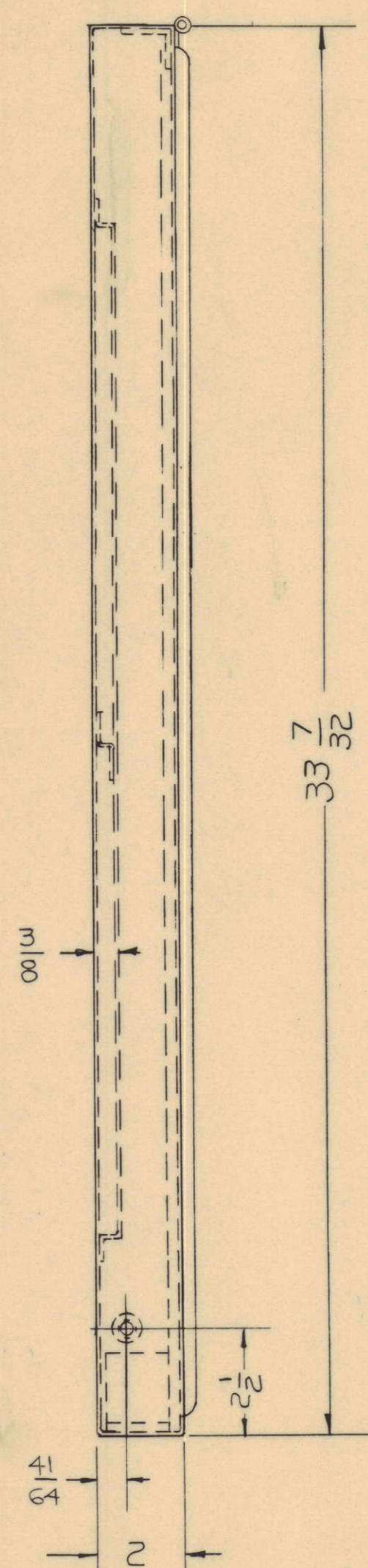


NOTICE TO PERSONS RECEIVING THIS DRAWING

THE TECHNICAL MATERIEL CORPORATION claims proprietary right in the material disclosed herein. This drawing is issued in confidence for engineering information only and may not be reproduced or used to manufacture anything shown herein without permission from THE TECHNICAL MATERIEL CORPORATION to the user. This drawing is loaned for mutual assistance and is subject to recall at any time.

Property of:

THE TECHNICAL MATERIEL CORPORATION
MAMARONECK, NEW YORK



(4) .073 DIA. HOLES IN DOOR

BUTT RUBBER EXTRUSION HERE. PT# AXR81 (GREY) 2 PCS @ 8' LG. USE RUBBER CEMENT DYNAGRIP

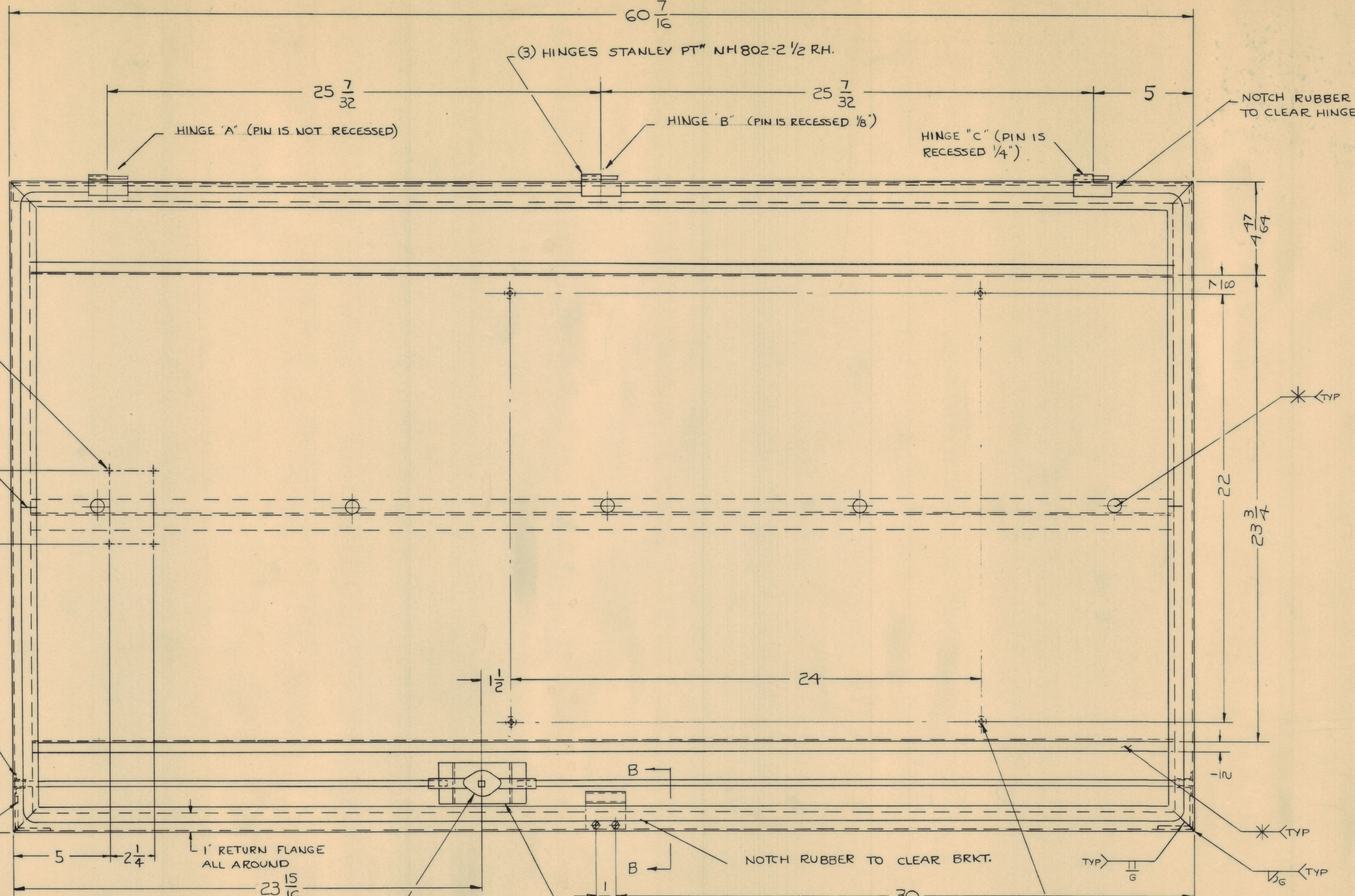
EYELET, STIMPSON #1536 PLAIN. STL.

2X2 X 12 GA. STL. ANGLE BRACE (SPOTWELD)

∅ OF PIN TO BE IN LINE WITH EDGE OF DOOR

61/64 X 1 3/8 X 16 GA. ANGLE BRACE. (SPOTWELD)

SECTION A-A



(3) HINGES STANLEY PT# NH802-2 1/2 RH.

HINGE "A" (PIN IS NOT RECESSED)

HINGE "B" (PIN IS RECESSED 1/8")

HINGE "C" (PIN IS RECESSED 1/4")

NOTCH RUBBER TO CLEAR HINGE

NOTCH RUBBER TO CLEAR BRKT.

TYP 1/16

(4) SPOTWELD NUTS PEM# WN632

1" RETURN FLANGE ALL AROUND

NIELSON HANDLE #1198 K

(2) #6-32 OVAL HD SCREW. 3/8 LG BRASS CHROME PLATE.

INTERLOCK BRKT INSTALL AFTER FINISH

#4-40 PHMS X 3/16 LG INSTALL AFTER FINISH

SECTION B-B

UNLESS OTHERWISE SPECIFIED DIMENSIONS ARE IN INCHES AND INCLUDE CHEMICALLY APPLIED OR PLATED FINISHES

DECIMALS	FRACTIONS	ANGLES
X ± .05	± 1/64	± .01°
XX ± .005	± .0005	± .01°

BYM	ZONE	DESCRIPTION	DATE	CH. NO.	DRAFTS	CHECKER	ENG. APP.
UNLESS OTHERWISE SPECIFIED:			SCALE				
DIMENSIONS ARE IN INCHES			A				
TOLERANCES ON FRACTIONS ± 1/64			MAXIMUM ALLOWABLE TOLERANCES HAVE BEEN DETERMINED AND ANY DEVIATIONS WILL BE CAUSE FOR REJECTION. REMOVE ALL BURRS & SHARP EDGES				
DECIMALS ± .005			ANGLES ± 1/2°				

REQ. ITEM	PART NO.	DESCRIPTION	SYMBOL
	ROGA	THE TECHNICAL MATERIEL CORP. MAMARONECK, NEW YORK	
	STEEL (MILD)	DOOR, MAIN FRAME SHIP BOARD	
	HR5		
	GPT-10K(C)AC		
		1-22-62	
TYPE & TEMPER	HEAT TREAT. SPEC.	DRAWN	CHECKED
		98B	98B
FINISH & SPEC. NO.		MS-2849	
		ELEC. DES. APP.	MECH. DES. APP.
		SHEET OF	

MS-2849