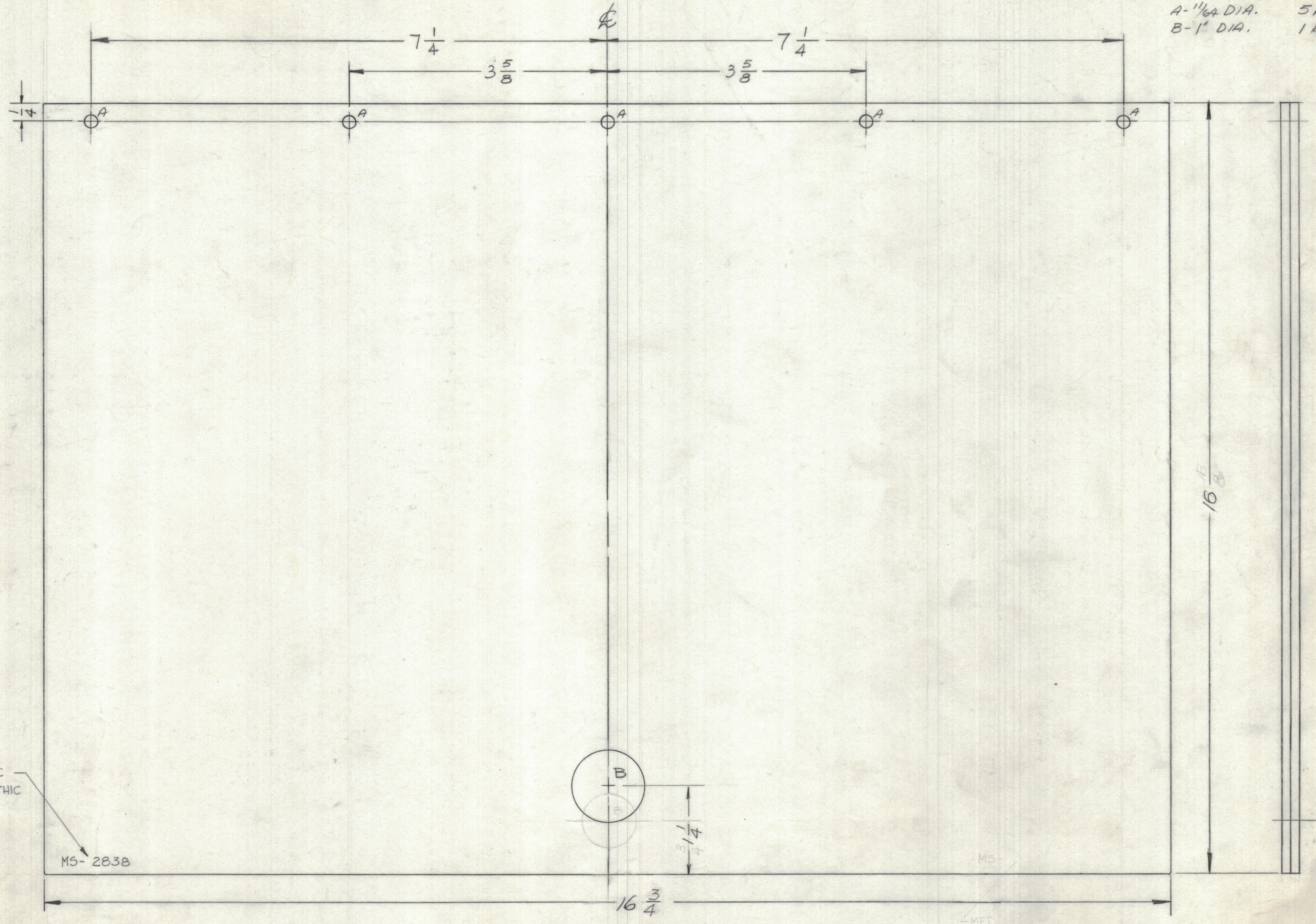


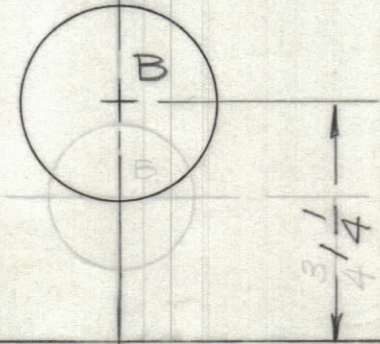
HOLES
 A-1/16" DIA. 5 REQ'D.
 B-1" DIA. 1 REQ'D.



1/16" EDGES
 BOUNDED
 TO 1/16" FORMICA
 GENERAL PURPOSE
 MAGNETIC
 5/20/69

METAL STAMP TMC
 PART NO. 1/8 GOTHIC
 AS SHOWN

MS-2838



NOTE -
 USE EPOXY M666 A&B AS BONDING AGENT

SYM	ZONE	DESCRIPTION	DATE	CH. NO.	DRAFTS	CHECKER	ENG. APP.
Ø		ORIGINAL RELEASE FOR PRODUCTION	1/25/69			CV	JD
UNLESS OTHERWISE SPECIFIED:			SCALE DO NOT SCALE				
DIMENSIONS ARE IN INCHES			MAXIMUM ALLOWABLE TOLERANCES HAVE BEEN DETERMINED AND ANY DEVIATIONS WILL BE CAUSE FOR REJECTION. REMOVE ALL BURRS & SHARP EDGES				
TOLERANCES ON FRACTIONS ± 1/64			DECIMALS ± .005		ANGLES ± 1/2°		

REQ. PER UNIT	MODEL	SECTION	ASS'Y. NO.	DATE
1	HUD-1			12-18-61

REQ. ITEM	PART NO.	DESCRIPTION	SYMBOL
1/16 x 1/16 BONDED STOCK SIZE		THE TECHNICAL MATERIEL CORP. MAMARONECK, NEW YORK	
FORMICA		COVER, TABLETOP DRAWER	
MATERIAL			
M666A&B EPOXY			
TYPE & TEMPER	HEAT TREAT. SPEC.		
FINISH & SPEC. NO.		ELEC. DES. APP.	MECH. DES. APP.
		SHEET	OF
		MS-2838	Ø