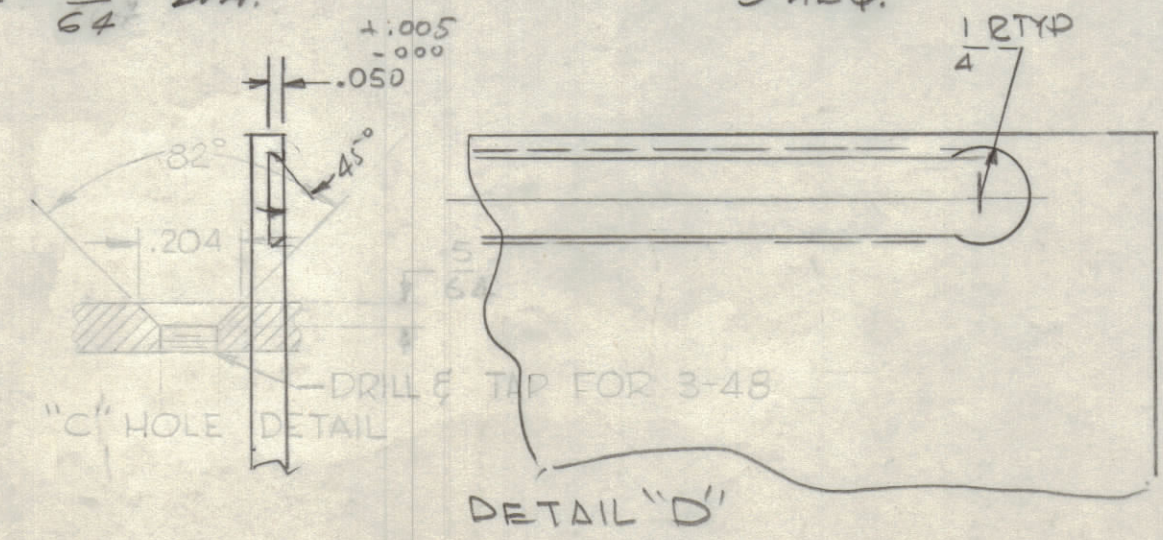


- HOLE LEGEND**
- A - SEE DETAIL 8 REQ.
 - B - DRILL & C'SINK FOR 6-32 (SEE DETAIL) 6 REQ.
 - C - DRILL & TAP FOR 3-48 (SEE DETAIL) 6 REQ.
 - D - 13/32 X 1/4 SLOT 4 REQ.
 - E - 5/64 DIA. 3 REQ.



NOTE: FINISH
 5404 - YEL. IRIDITE.
 5114 - ZINC CHROMATE PRIMER.
 5115 - SMOOTH GRAY ENAMEL.
 PAINT FRONT & EDGES ONLY, OR
 PRIME & PAINT TO CUSTOMERS
 SPECIFICATION.

METAL STAMP TMC PART NO. MS-2834-B
 1/8" HIGH GOTHIC ON REAR OF PANEL.

NOTICE TO PERSONS RECEIVING THIS DRAWING
 THE TECHNICAL MATERIEL CORPORATION claims proprietary right in the material disclosed hereon. This drawing is issued in confidence for engineering information only and may not be reproduced or used to manufacture anything shown hereon without permission from THE TECHNICAL MATERIEL CORPORATION to the user. This drawing is loaned for mutual assistance and is subject to recall at any time.

Property of:
 THE TECHNICAL MATERIEL CORPORATION
 MAMARONECK, NEW YORK

SYM	ZONE	DESCRIPTION	DATE	CH. NO.	DRAFTS	CHECKER	ENG. APP.
C		6 (3/16") HOLES DRILL & TAP FOR 6-32 DEL. 'B' HOLE RELOCATED, SLOT 17" X 1/2" ADD	5-1-64	22057	G'DL		
B	C7	ON 'A' DETAIL DIMS COMPLETELY CLARIFIED	3-1-63	8309	GP		
A	G6,G1	CHANGED POSITION OF (B) & (C) HOLES & REDIMENSIONED HOLES. ALSO ADDED QDP-1B1X8 & JPP-7B5X8 TO CHART	5-31-62	6771	V.R.R.		

UNLESS OTHERWISE SPECIFIED:
 DIMENSIONS ARE IN INCHES
 TOLERANCES ON FRACTIONS ± 1/64 DECIMALS ± .005 ANGLES ± 1/2°

SCALE: MAXIMUM ALLOWABLE TOLERANCES HAVE BEEN DETERMINED AND ANY DEVIATIONS WILL BE CAUSE FOR REJECTION. REMOVE ALL BURRS & SHARP EDGES

REQ. PER UNIT	MODEL	SECTION	ASSY. NO.	DATE
1	JPP-7B5X8			
1	QDP-1B1X8			1-13-62

REQ. ITEM	PART NO.	DESCRIPTION	SYMBOL
	3/16	STOCK SIZE	
	ALUMINUM	MATERIAL	
	5052-H32		
	SEE NOTE	FINISH & SPEC. NO.	

THE TECHNICAL MATERIEL CORP.
 MAMARONECK, NEW YORK

PANEL, FRONT, MACHINING
 QDP

W.R. RUZZO
 DRAWN CHECKED

E.T.W.
 FINAL APPROVAL

MS-2834 C

ELEC. DES. APP. MECH. DES. APP. SHEET OF