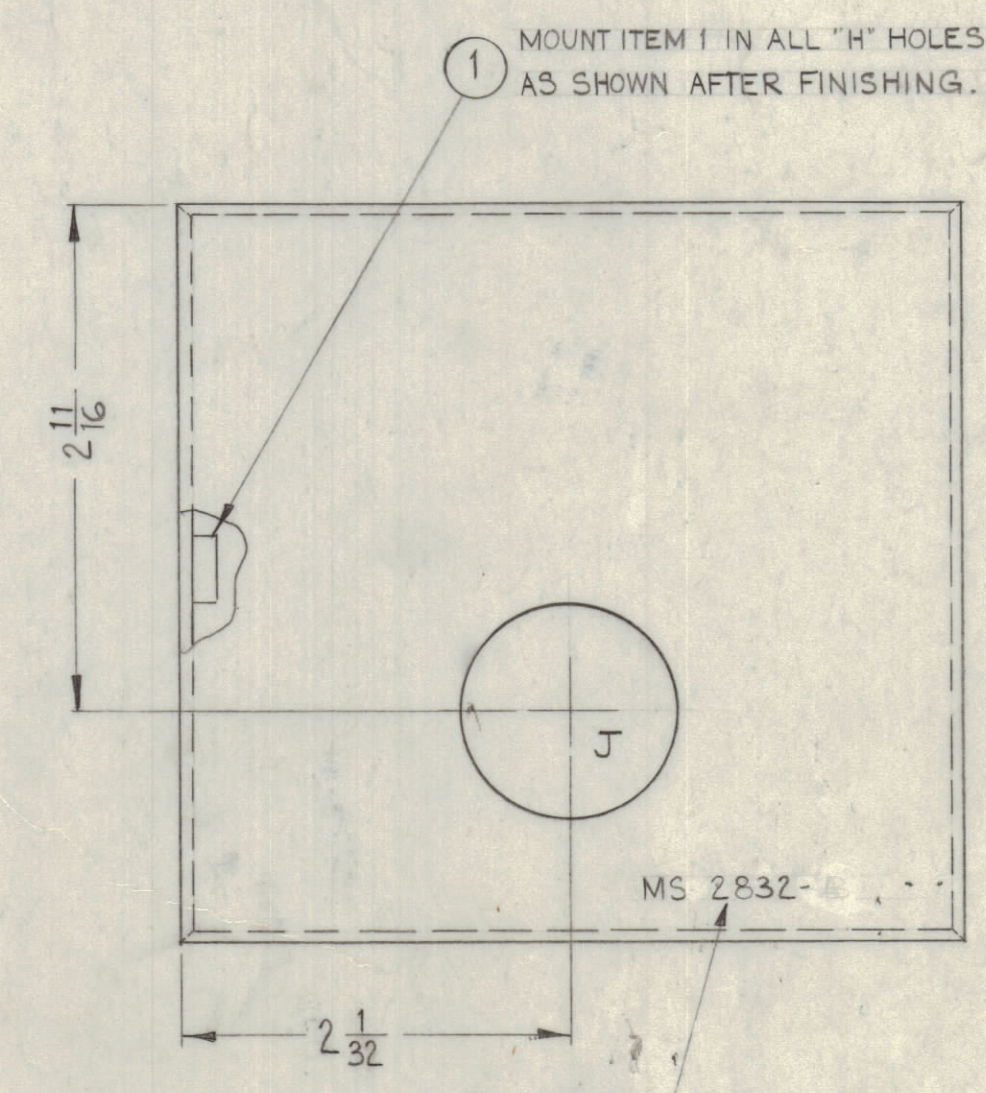
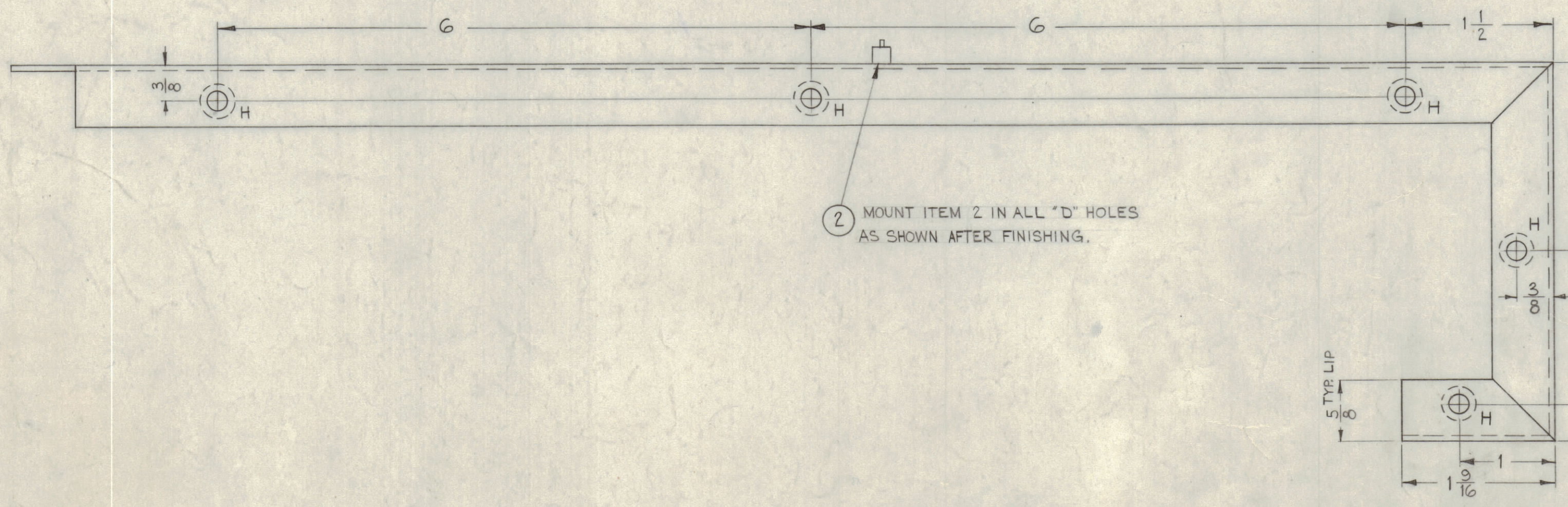
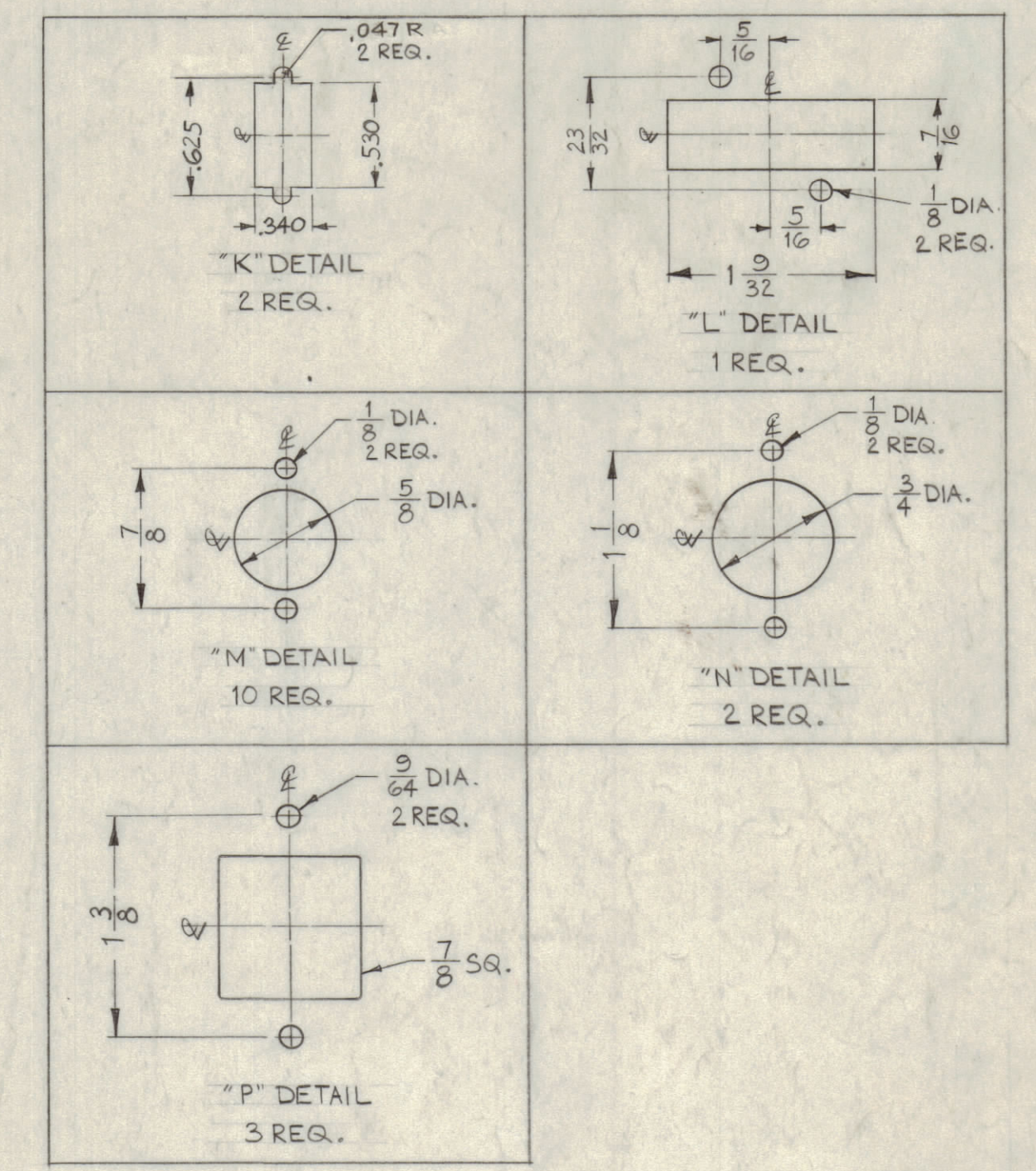
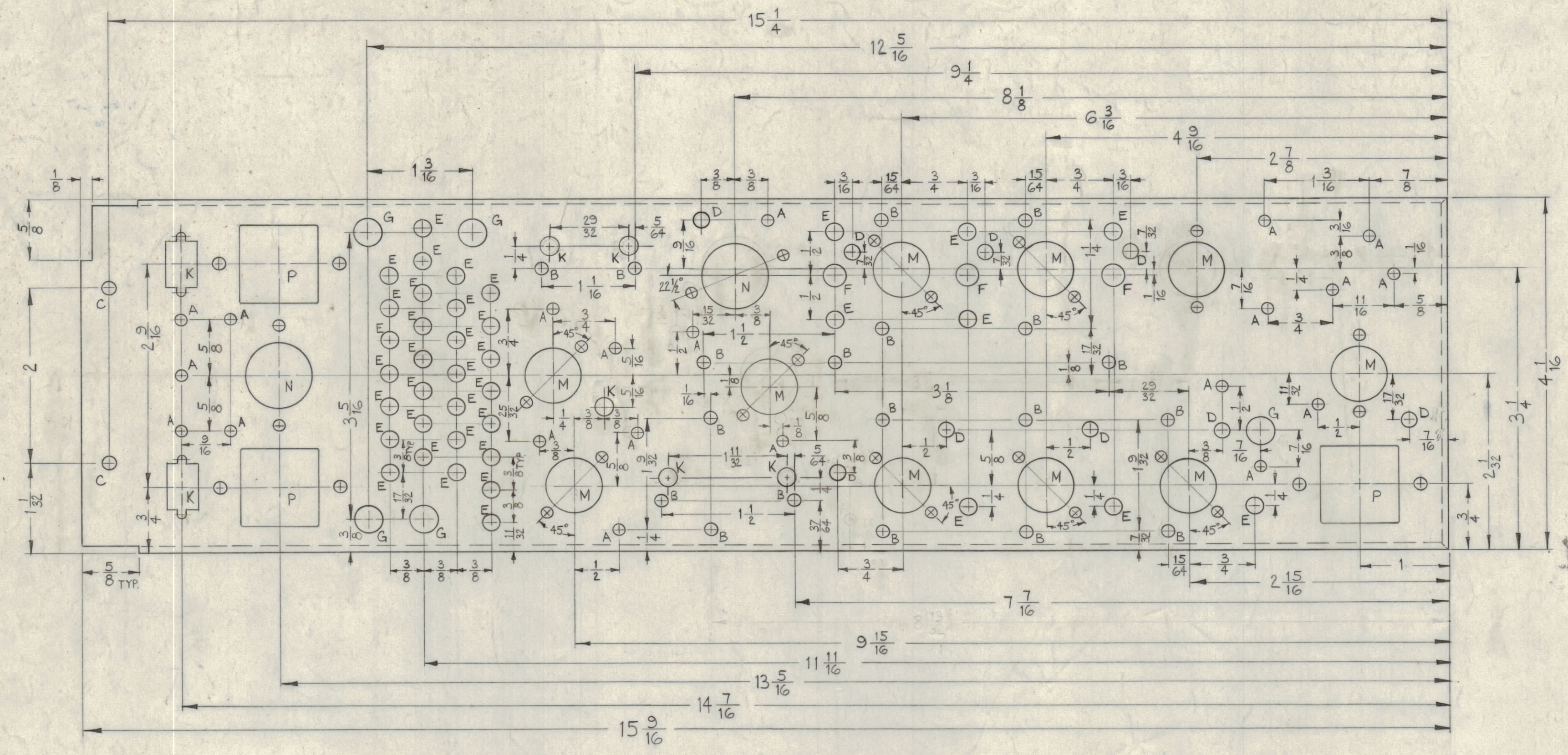


LEGEND		
HOLE	DESCRIPTION	REQ.
A	1/8 DIA.	21
B	3/64 DIA.	19
C	5/32 DIA.	2
D	.166 DIA.	9
E	3/16 DIA.	38
F	1/4 DIA.	5
G	5/16 DIA.	5
H	.191-.194 DIA.	11
J	1/8 DIA.	1
K	7/32 DIA.	5



USE MATERIAL THICKNESS FOR MAX. RADIUS ON ALL BENDS UNLESS OTHERWISE SPECIFIED

SYM	ZONE	DESCRIPTION	DATE	CH. NO.	DRAFTS	CHECKER	ENG. APP.
D	AG	DETAIL 'H' WAS RELOCATED TO INSIDE	9/5/65	14998	XXV	9/16	NNK
E	EG	(1) 'H' HOLES WERE TO	7-18-63	9556	AK	NO.	WJ
F	FG	(2) 'K' HOLES WERE TO					
G	GG	ADDED (5) 'K' HOLES, (1) 'C' WAS (6) REQ.					
H	HH	(1) 'A' HOLE DELETED, (1) 'E' HOLE ADDED	3-11-63	8460			
I	II	ON 'K' DETAIL (2) HOLES .093 DIA. DELETED OUTOUT RIVED					
J	JJ	(2) (D) HOLES WERE (2) (A) HOLES, ITEM (C) WAS 7 REQ.	3-21-62	7376			

NOTICE TO PERSONS RECEIVING THIS DRAWING
 THE TECHNICAL MATERIEL CORPORATION claims proprietary right in the material disclosed herein. This drawing is issued in confidence for engineering information only and may not be reproduced or used to manufacture anything shown hereon without permission from THE TECHNICAL MATERIEL CORPORATION to the user. This drawing is loaned for mutual assistance and is subject to recall at any time.

Property of:
 THE TECHNICAL MATERIEL CORPORATION
 MAMARONECK, NEW YORK

UNLESS OTHERWISE SPECIFIED:
 DIMENSIONS ARE IN INCHES
 TOLERANCES ON FRACTIONS ± 1/64 DECIMALS ± .005 ANGLES ± 1/2°
 SCALE DO NOT SCALE
 MAXIMUM ALLOWABLE TOLERANCES HAVE BEEN DETERMINED AND ANY DEVIATIONS WILL BE CAUSE FOR REJECTION. REMOVE ALL BURRS & SHARP EDGES

REQ. PER UNIT	MODEL	SECTION	ASSY. NO.	DATE
1	HFS-1	3500		8-15-62

REQ.	ITEM	PART NO.	DESCRIPTION	SYMBOL
9	2	TE 169-1	FEED-THRU, TEFLON	D
11	1	NT 129-632-4	NUT, ROUND, SWAGE TYPE	H
STOCK SIZE				
ALUMINUM				
MATERIAL				
5052-H32				
TYPE & TEMPER				
3404 YEL IRIDITE				
FINISH & SPEC. NO.				
DRAWN				
CHECKED				
FINAL APPROVAL				
MS 2832				
ELEC. DES. APP.				
MECH. DES. APP.				
SHEET OF				

MS 2832 D