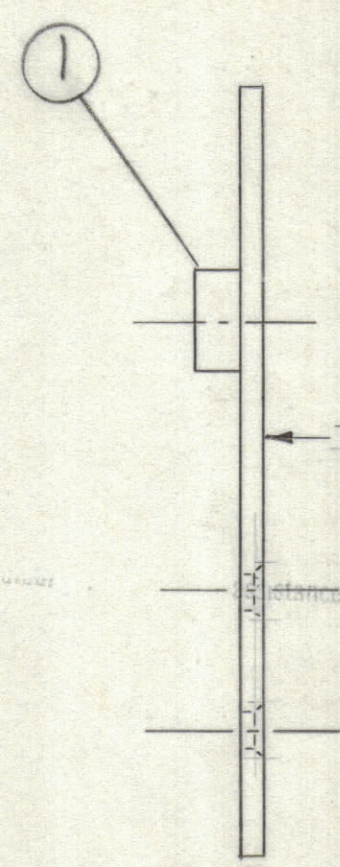
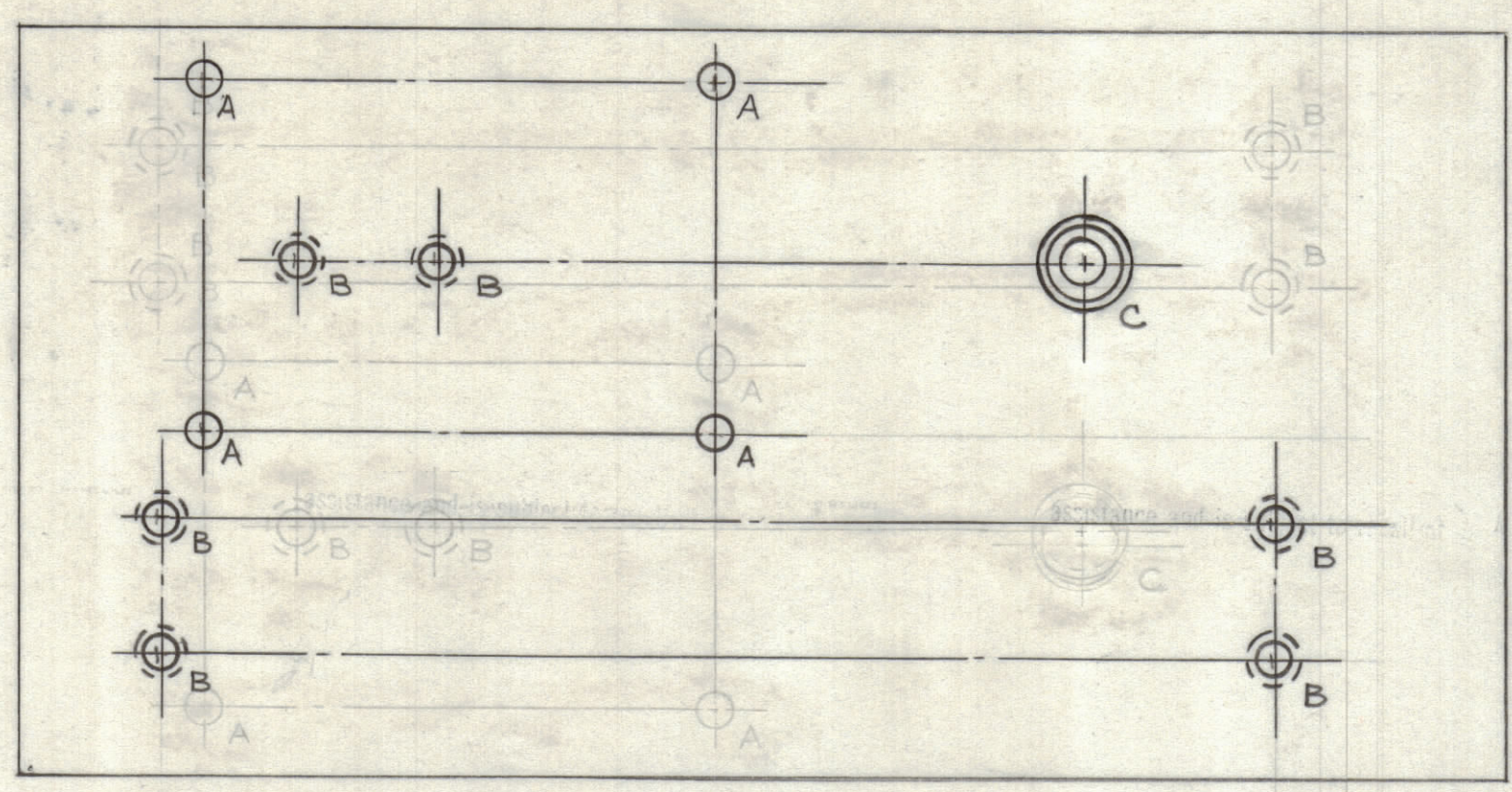


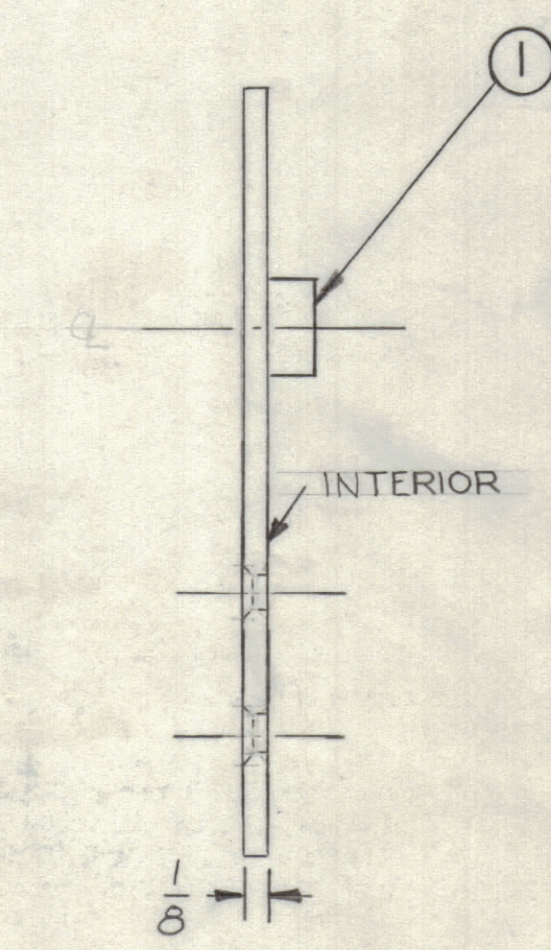
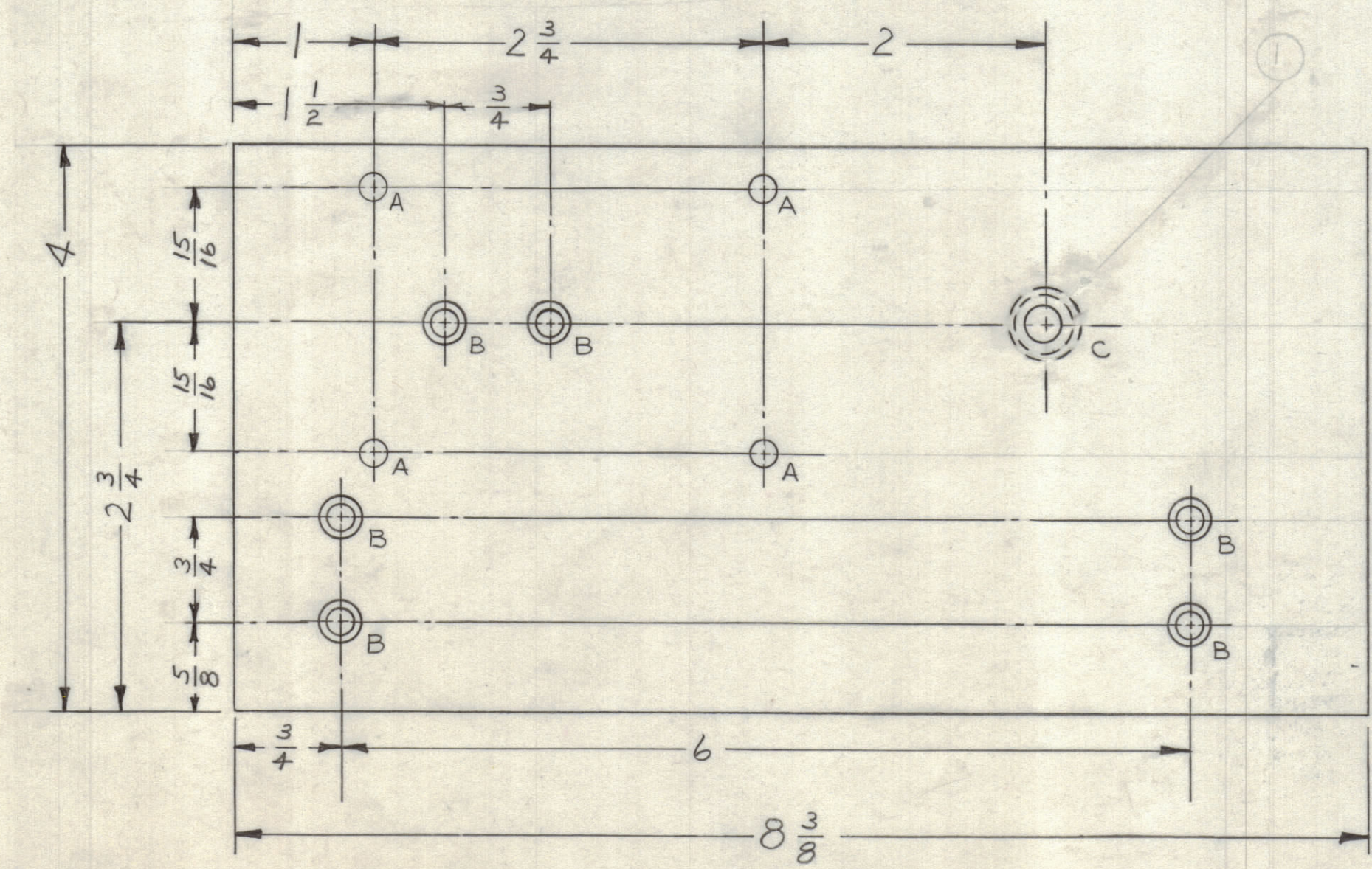
NOTES:
 "A" - #8-32 UNF. 10-32 SCREWS 4 REQ.
 "B" - SEE DETAIL 6 REQ.
 "C" - .413-.416 DIA. 1 REQ.



NOTICE TO PERSONS RECEIVING THIS DRAWING
 THE TECHNICAL MATERIEL CORPORATION claims proprietary right in the material disclosed herein. This drawing is issued in confidence for engineering information only and may not be reproduced or used to manufacture anything shown hereon without permission from THE TECHNICAL MATERIEL CORPORATION to the user. This drawing is loaned for mutual assistance and is subject to recall at any time.
 Property of:
 THE TECHNICAL MATERIEL CORPORATION
 MAMARONECK, NEW YORK

NOTE:
 SEE RIGHT SIDE SUPPORT FOR TYPICAL HOLE DIMENSIONING & NOTES

TMC PART NO.	DESCRIPTION
MS-2828-1	RIGHT SIDE SUPPORT (AS SHOWN)
MS-2828-2	LEFT SIDE SUPPORT



MOUNT IN "C" HOLE AS SHOWN AFTER FINISH.

HOLES:
 A - 13/64 DIA. 4 REQ.
 B - SEE DETAIL 6 REQ.
 C - .413-.416 DIA. 1 REQ.

DRILL & C-SINK FOR 8-32 SCREW

"B" DETAIL 6 REQ.

FINISH NOTE:
 FOR CORRECT SHADES OF IRIDITE USE SB-12A CHASSIS AS COLOR CHIP.

NOTE:
 ALL DIMENSIONS TYPICAL FOR RIGHT & LEFT SIDE PLATES.

REQ.	ITEM	PART NO.	DESCRIPTION	SYMBOL
1	1	NT-129-524-4	NUT, ROUND, SWAGE TYPE	C
		1/8 THK.	THE TECHNICAL MATERIEL CORP. MAMARONECK, NEW YORK	
		ALUMINUM T3	SLIDE SUPPORT	
		2024-T3	G. SENCEN	
		TYPE & TEMPER	HEAT TREAT. SPEC.	
		SEE NOTE		
		FINISH & SPEC. NO.	ELEC. DES. APP.	MECH. DES. APP.
				SHEET OF
				MS-2828

SYM	ZONE	DESCRIPTION	DATE	CH. NO.	DRAFTS	CHECKER	ENG. APP.
UNLESS OTHERWISE SPECIFIED:							
DIMENSIONS ARE IN INCHES							
TOLERANCES ON FRACTIONS ± 1/64 DECIMALS ± .005 ANGLES ± 1/2°							
SCALE: MAXIMUM ALLOWABLE TOLERANCES HAVE BEEN DETERMINED AND ANY DEVIATIONS WILL BE CAUSE FOR REJECTION. REMOVE ALL BURRS & SHARP EDGES							

REQ. PER UNIT	MODEL	SECTION	ASSY. NO.	DATE
1 EACH	FSA-2	PS-2		2-5-62