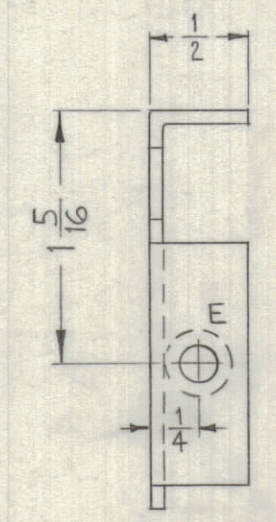
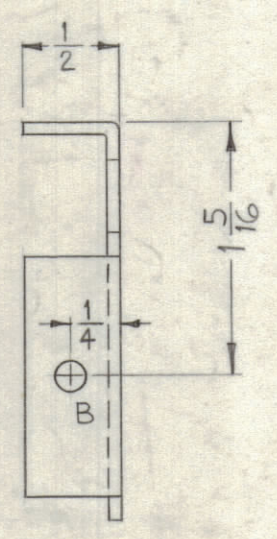
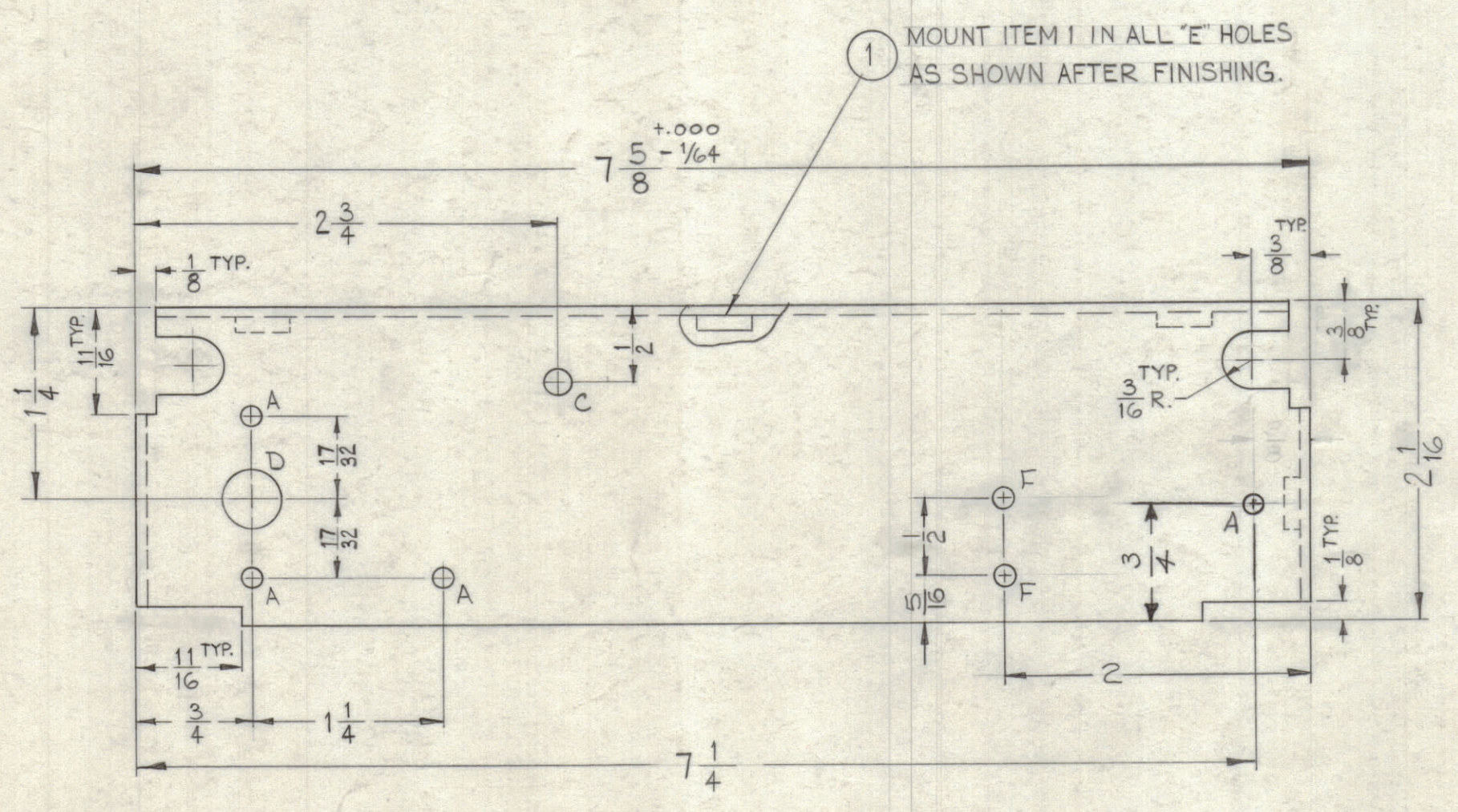
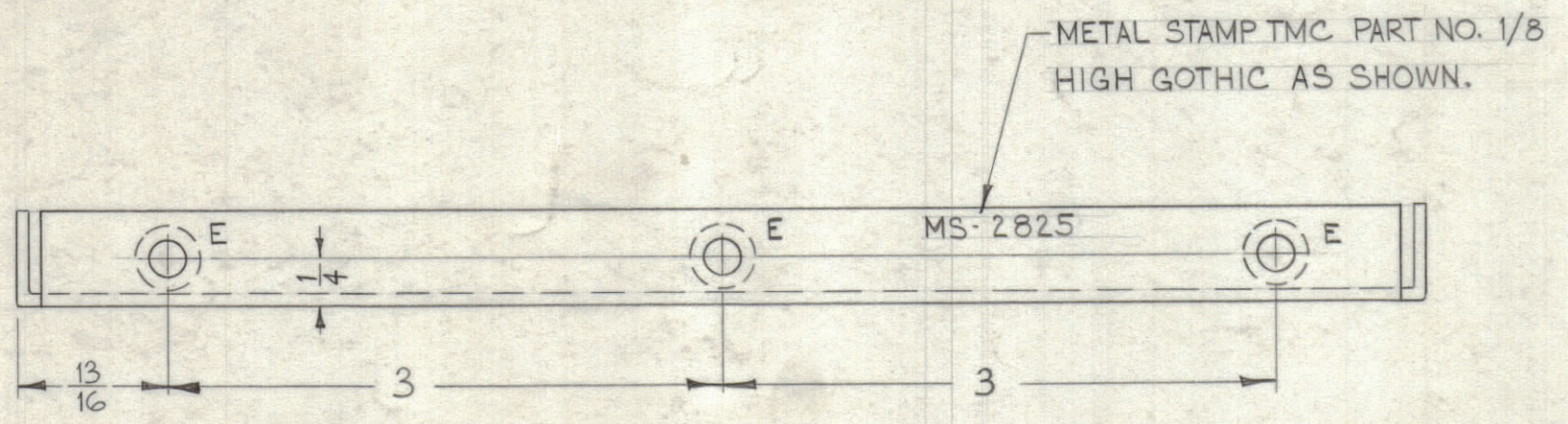


**NOTICE TO PERSONS RECEIVING THIS DRAWING**

THE TECHNICAL MATERIEL CORPORATION claims proprietary right in the material disclosed hereon. This drawing is issued in confidence for engineering information only and may not be reproduced or used to manufacture anything shown hereon without permission from THE TECHNICAL MATERIEL CORPORATION to the user. This drawing is loaned for mutual assistance and is subject to recall at any time.

Property of:  
THE TECHNICAL MATERIEL CORPORATION  
MAMARONECK, NEW YORK

LEGEND		
HOLE	DESCRIPTION	REQ.
A	1/8 DIA.	4
B	5/32 DIA.	1
C	.158 ± .002 DIA.	1
D	3/8 DIA.	1
E	.191-.194 DIA.	4
F	.086 DIA.	2



**SUPERSEDED**

DIRECTLY REPLACED BY MS-3444 & MS-3445  
9566 7-12-63 A.K.

USE MATERIAL THICKNESS FOR MAX. RADIUS ON ALL BENDS UNLESS OTHERWISE SPECIFIED

MOUNT INSERTS AFTER FINISHING

BLANK SIZE 8 7/16 X 2 15/32

SYM	ZONE	DESCRIPTION	DATE	CH. NO.	DRAFTS	CHECKER	ENG. APP.
A	~	MS-2825 REPLACED BY MS-3444 & MS-3445	7-12-63	9566	A.K.	TR	QAB

UNLESS OTHERWISE SPECIFIED:  
DIMENSIONS ARE IN INCHES  
TOLERANCES ON  
FRACTIONS ± 1/64    DECIMALS ± .005    ANGLES ± 1/2°

SCALE DO NOT SCALE

MAXIMUM ALLOWABLE TOLERANCES HAVE BEEN DETERMINED AND ANY DEVIATIONS WILL BE CAUSE FOR REJECTION. REMOVE ALL BURRS & SHARP EDGES

REQ. PER UNIT	MODEL	SECTION	ASS'Y. NO.	DATE
1	HFA-1	AUDIO DECK		7-26-62

USED ON

REQ.	ITEM	PART NO.	DESCRIPTION	SYMBOL
4	1	NT-129-632-4	NUT, ROUND, SWAGE TYPE	E
			FAIOLA	
		.064	STOCK SIZE	
		ALUMINUM	MATERIAL	
		5052-H32		
		3404 YEL. IRIDITE	TYPE & TEMPER	
			HEAT TREAT. SPEC.	
			FINISH & SPEC. NO.	

THE TECHNICAL MATERIEL CORP.  
MAMARONECK, NEW YORK

BRACKET MOUNTING, SUB-DIVIDING,  
RF SHIELD, CHANNEL A

DRAWN: WAF. CHECKED: JWE. FINAL APPROVAL: BRP

A.R.P. MS-2825 A

ELEC. DES. APP. MECH. DES. APP. SHEET OF