

THE CONTENTS OF THIS DRAWING ARE THE EXCLUSIVE PROPERTY OF THE TECHNICAL MATERIEL CORP. ITS UNAUTHORIZED USE OR REPRODUCTION IN WHOLE OR IN PART IS STRICTLY FORBIDDEN.

REQ. PER UNIT

MODEL

USED ON

ASS'Y. NO.

DATE

1

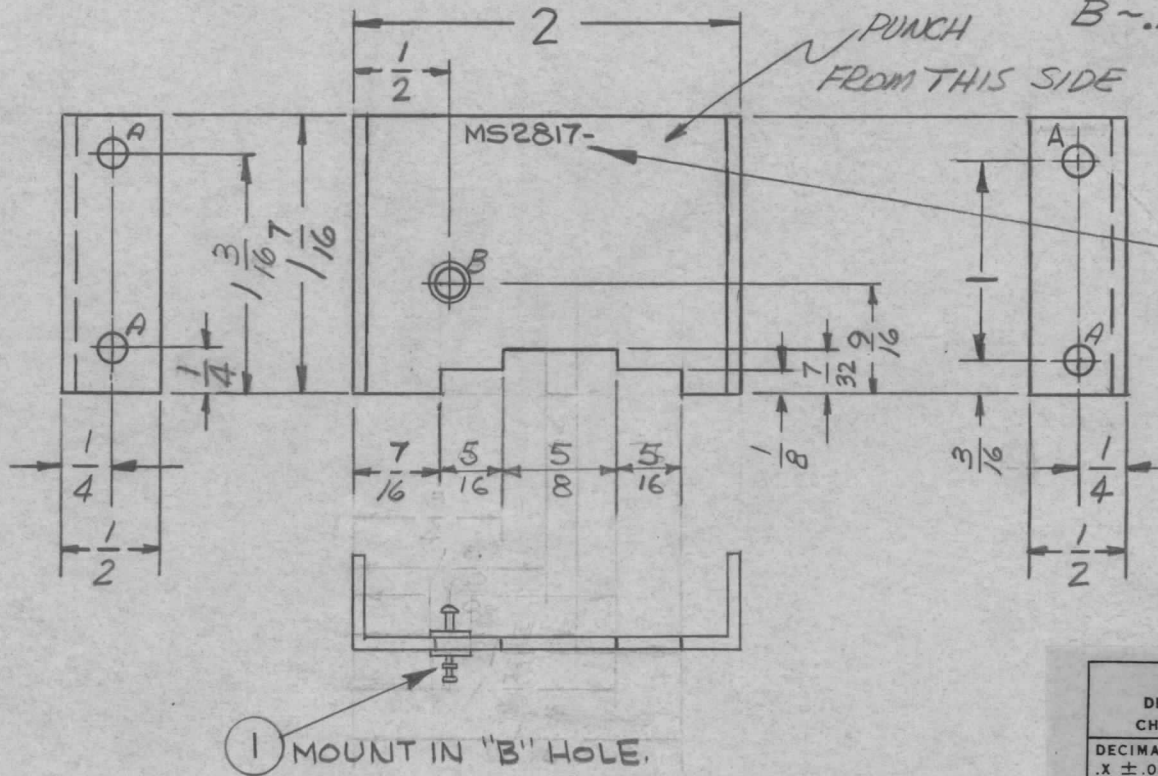
HF8-11N

7-24-62

MS-2817

B

HOLES ~  
A ~ 9/64 DIA. 4 REQ'D.  
B ~ .136 DIA. 1 REQ'D.  
C SINK 60°



UNLESS OTHERWISE SPECIFIED DIMENSIONS ARE IN INCHES AND INCLUDE CHEMICALLY APPLIED OR PLATED FINISHES

DECIMALS	FRACTIONS
.X ± .05	± 1/64
.XX ± .01	ANGLES ± 0° 30'
.XXX ± .005	

TOLERANCES

CUT HERE GUARANTEED 2-66

						1	1	TE193B759	TERMINAL, STUD, INSULATED	B	
						REQ.	ITEM	PART NO.	GELLMAN DESCRIPTION	SYMBOL	
						.051 THK			THE TECHNICAL MATERIEL CORP.		
						ALUMINUM			MAMARONECK, NEW YORK		
						MATERIAL			BRACKET, MOUNTING, RF SHIELD, #2		
						5052-H32			AB	file	BP
						TYPE & TEMPER		HEAT TREAT. SPEC.	DRAWN	CHECKED	FINAL APPROVAL
						5404-YEL. IRIDITE			WCF		MS-2817
						FINISH & SPEC. NO.		ELEC. DES. APP.	MECH. DES. APP.	B	
UNLESS OTHERWISE SPECIFIED: DIMENSIONS ARE IN INCHES TOLERANCES ON						SCALE: MAXIMUM ALLOWABLE TOLERANCES HAVE BEEN DETERMINED AND ANY DEVIATIONS WILL BE CAUSE FOR REJECTION. REMOVE ALL BURRS AND SHARP EDGES					
SYM		DESCRIPTION		DATE	CH. NO.	DRAFTS	CHECKER	ENG. APP.			
B	ONE "A" HOLE ADDED		11.5.64	12869	JAB	@	JA				
A	ITEM (1) ADDED "B" HOLE WAS .136 DIA.		8-7-64	12046	JS	MP					
FRAC. ± 1/64		DEC. ± .005		ANGLES ± 1/2°							