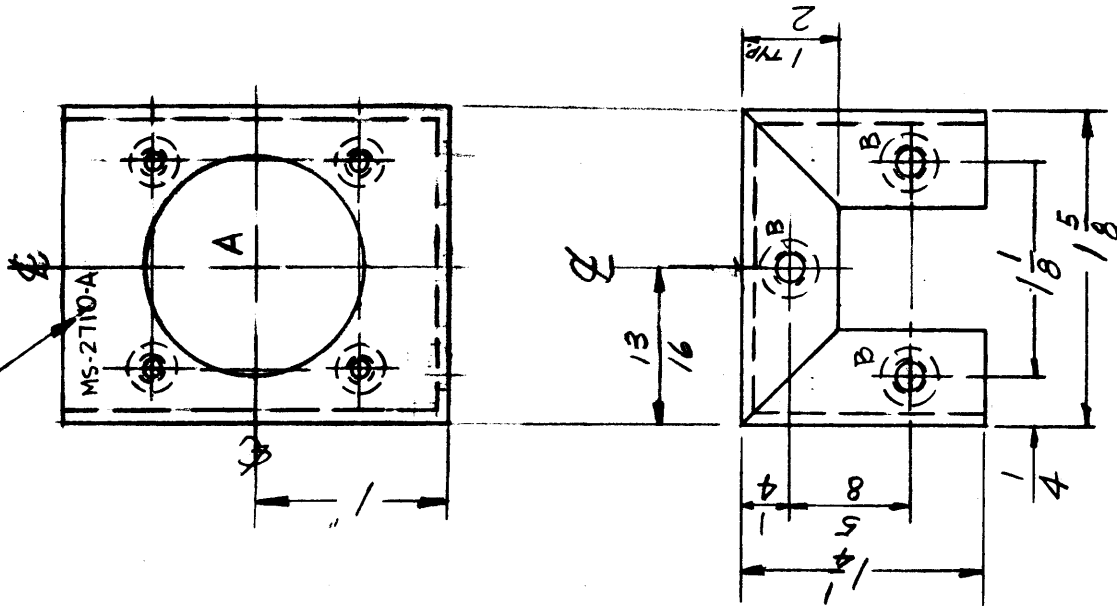
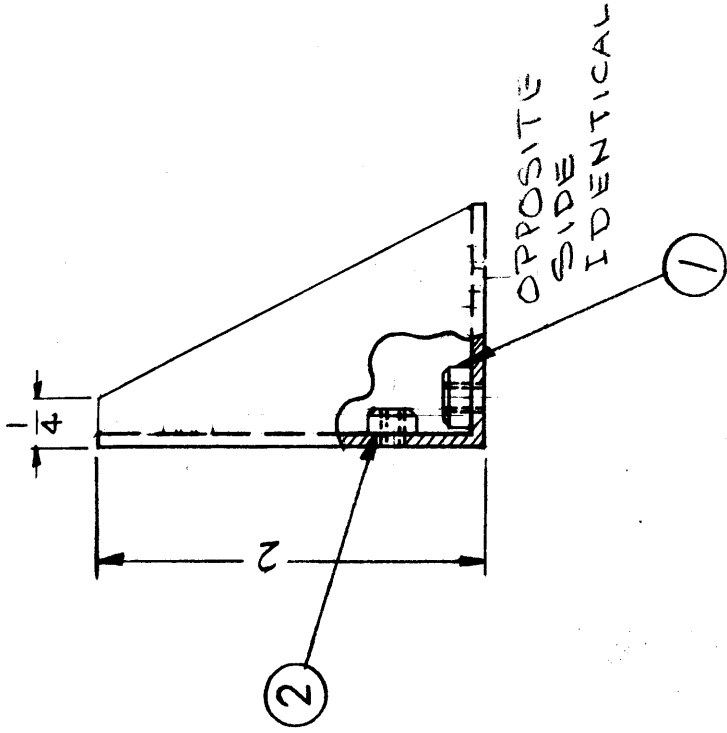
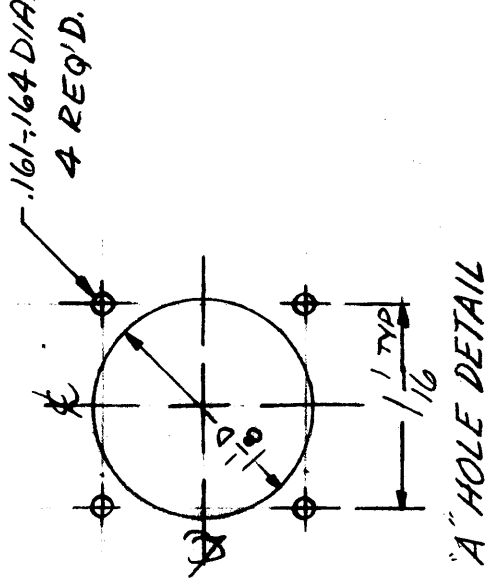


MS-2710
A

METAL STAMP TMC PART
NO. 8 HIGH GOTHIC



HOLES ~
A - SEE DETAIL 1 REQ'D.
B - .191-.194 DIA 3 REQ'D.



USE MATERIAL THICKNESS FOR MAX. RADIUS
ON ALL BENDS UNLESS OTHERWISE SPECIFIED.

MOUNT INSERTS AFTER FINISHING

FOR ALL PERSONS RECEIVING THIS DRAWING

THE TECHNICAL MATERIEL CORPORATION claims
proprietary right in the material disclosed hereon.
This drawing is issued in confidence for engineering
information only and may not be reproduced or used
to manufacture anything shown hereon without per-
mission from THE TECHNICAL MATERIEL CORPORA-
TION to the user. This drawing is loaned for mutual
assistance and is subject to recall at any time.

Property of:

THE TECHNICAL MATERIEL CORPORATION
MAMARONECK, NEW YORK

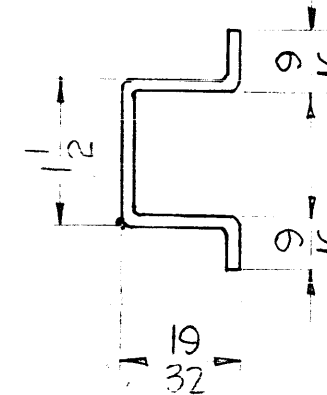
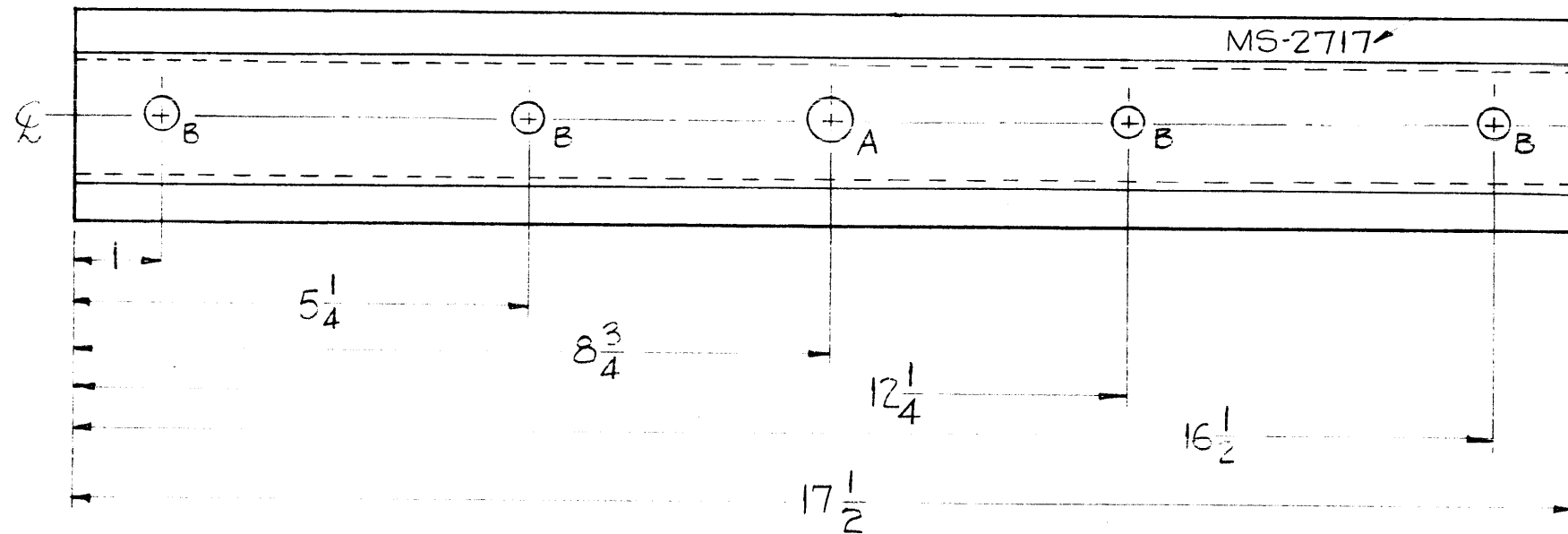
SYM	DESCRIPTION	DATE	CH. NO.	DRAFTS	CHECKER	ENG. APP.
A	ON RIGHT SIDE VIEW 1/4" LIP ADDED	2-20-63	8320	84	YOR	[Signature]
SCALE: MAXIMUM ALLOWABLE TOLERANCES HAVE BEEN DETERMINED AND ANY DEVIATIONS WILL BE CAUSE FOR REJECTION. REMOVE ALL BURRS AND SHARP EDGES						
UNLESS OTHERWISE SPECIFIED: DIMENSIONS ARE IN INCHES TOLERANCES ON FRACTIONS ± 1/64 DECIMALS ± .005 ANGLES ± 1/20						

REQ. ITEM	PART NO.	DESCRIPTION	SYMBOL
4	2	NT-129-440-4	NUT, ROUND, SWAGE TYPE A
3	1	NT-129-632-4	NUT, ROUND, SWAGE TYPE B
.081 THICK STOCK SIZE			
ALUMINUM			
MATERIAL			
5052-H32			
TYPE & TEMPER HEAT TREAT. SPEC.			
S404-YEL-IRIDITE			
FINISH & SPEC. NO.			
MS-2710			
DRAWN BY: AB			
CHECKED BY: [Signature]			
FINAL APPROVAL: [Signature]			
MAMARONECK, NEW YORK			
THE TECHNICAL MATERIEL CORP.			
CONNECTOR			
BRACKET, MOUNTING			

MS-2717

HOLES
 A ~ 17/32 Dia.
 B ~ 13/32 Dia.
 REQ. 1
 4

METAL STAMP TMC PART NO $\frac{1}{8}$ HIGH GOTHIC AS SHOWN.



USE MATERIAL THICKNESS FOR MAX. RADIUS
 ON ALL BENDS UNLESS OTHERWISE SPECIFIED

NOTICE TO PERSONS RECEIVING THIS DRAWING

THE TECHNICAL MATERIEL CORPORATION claims proprietary right in the material disclosed hereon. This drawing is issued in confidence for engineering information only and may not be reproduced or used to manufacture anything shown hereon without permission from THE TECHNICAL MATERIEL CORPORATION to the user. This drawing is loaned for mutual assistance and is subject to recall at any time.

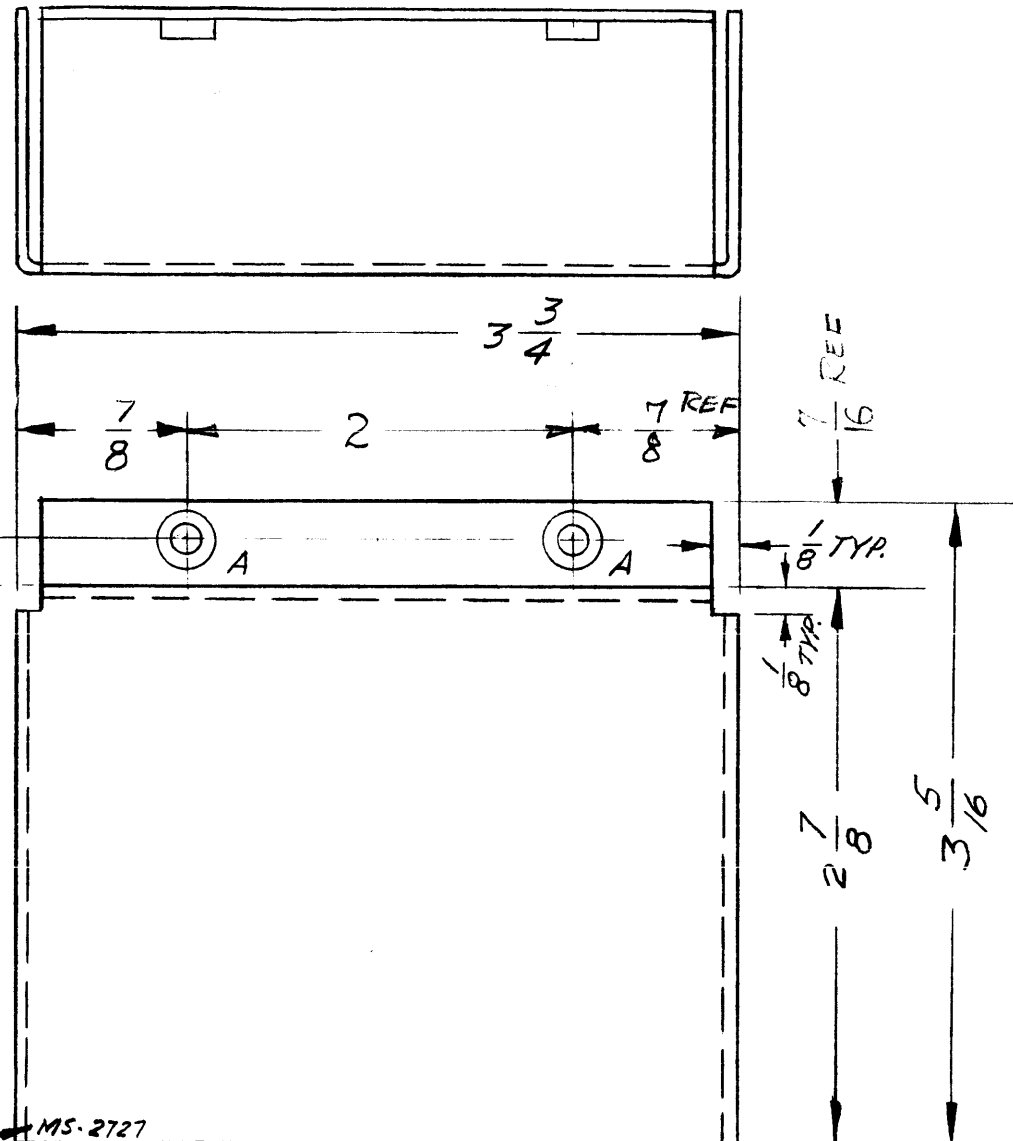
Property of:
 THE TECHNICAL MATERIEL CORPORATION
 MAMARONECK, NEW YORK

SYM	DESCRIPTION	DATE	CH. NO.	DRAFTS	CHECKER	ENG. APP.
		8/25/61		WAF		
UNLESS OTHERWISE SPECIFIED:		SCALE:				
DIMENSIONS ARE IN INCHES		MAXIMUM ALLOWABLE TOLERANCES HAVE BEEN DETERMINED AND ANY DEVIATIONS WILL BE CAUSE FOR REJECTION.				
TOLERANCES ON FRACTIONS $\pm 1/64$ DECIMALS $\pm .005$ ANGLES $\pm 1/2^\circ$		REMOVE ALL BURRS AND SHARP EDGES				

REQ. PER UNIT	MODEL	SECTION	ASS'Y. NO.	DATE
2	TRC-20K			10-19-61
USED ON				

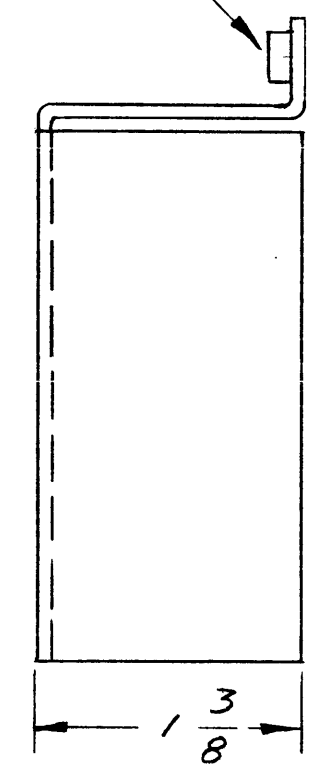
REQ. ITEM	PART NO.	DESCRIPTION	SYMBOL
	.081	THE TECHNICAL MATERIEL CORP. MAMARONECK, NEW YORK	
	STOCK SIZE		
	ALUMINUM	BRACKET MOUNTING	
	MATERIAL		
5052-H32		DRAWN	5/25/61
TYPE & TEMPER	HEAT TREAT. SPEC.	CHECKER	FINAL APPROVAL
5-404 YELLOW IRIDITE			
FINISH & SPEC. NO.	ELEC. DES. APP.	MECH. DES. APP.	
			MS-2717

MS-2727



HOLES:
A - .191-.194 DIA. 2 REQ.

① MOUNT ITEM 1 IN ALL "A" HOLES AFTER FINISHING AS SHOWN.



PROPERTY OF THE TECHNICAL MATERIEL CORPORATION
MAMARONECK, NEW YORK

METAL STAMP TMC PART NO., 1/8 HIGH GOTHIC, AS SHOWN.

SYM	DESCRIPTION	DATE	CH. NO.	DRAFTS	CHECKER	ENG. APP.
	UNLESS OTHERWISE SPECIFIED:	SCALE:				
	DIMENSIONS ARE IN INCHES	MAXIMUM ALLOWABLE TOLERANCES HAVE BEEN DETERMINED AND ANY DEVIATIONS WILL BE CAUSE FOR REJECTION.				
	TOLERANCES ON FRACTIONS ± 1/64 DECIMALS ± .005 ANGLES ± 1/2°	REMOVE ALL BURRS AND SHARP EDGES				

USE MATERIAL THICKNESS FOR MAX. RADIUS ON ALL BENDS UNLESS OTHERWISE SPECIFIED

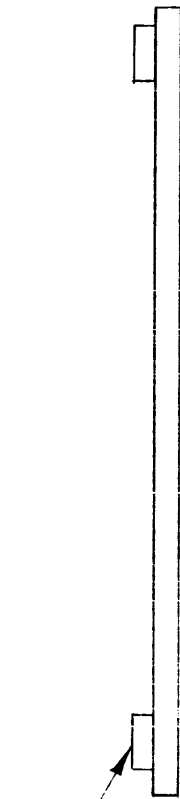
REQ. PER UNIT	MODEL	SECTION	ASS'Y. NO.	DATE
1	HFI-1			7-26-62

2	1	NT-129-632-3	NUT, ROUND, SWAGE TYPE	A
REQ. ITEM	PART NO.	M. GELLMAN	DESCRIPTION	SYMBOL
		.051	THE TECHNICAL MATERIEL CORP. MAMARONECK, NEW YORK	
		ALUMINUM	COVER, POWER CONNECTOR	
		5052-H32	WA	RUIZZO
		S404 YEL IRIDITE	BP	
			MS-2727	

MS-2732

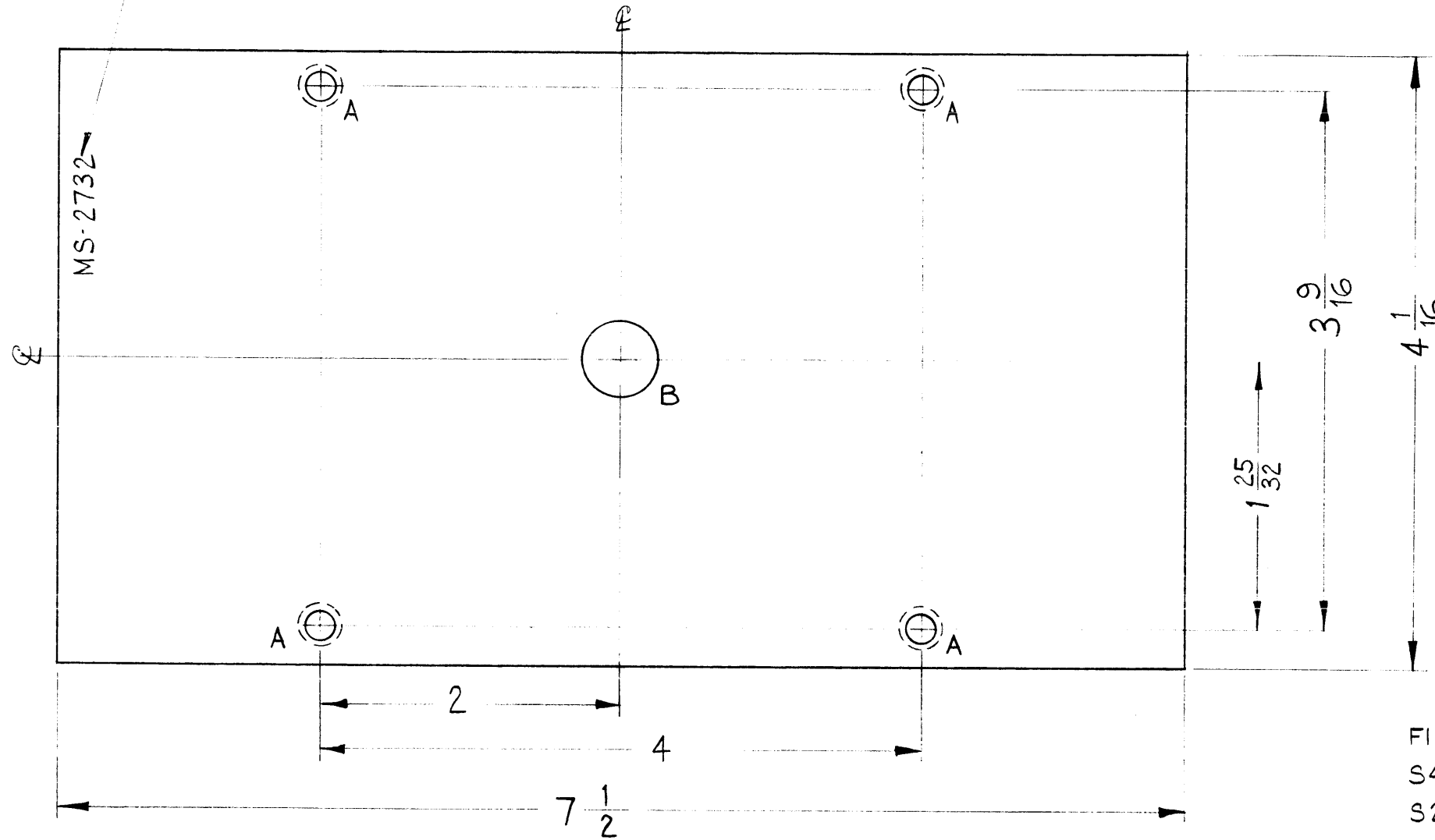
- METAL STAMP TMC PART NO. AS SHOWN $\frac{1}{8}$ HIGH GOTHIC.

A~.191-.194 DIA. 4 REQ.
 B~ $\frac{1}{2}$ DIA. 1 "



1

MOUNT ITEM 1 IN ALL "A" HOLES AS SHOWN AFTER FINISHING.



FRONT VIEW

FINISH NOTE~
 S404 YELLOW IRIDITE.
 S220 TMC RCAF BLUE GREY ENAMEL.

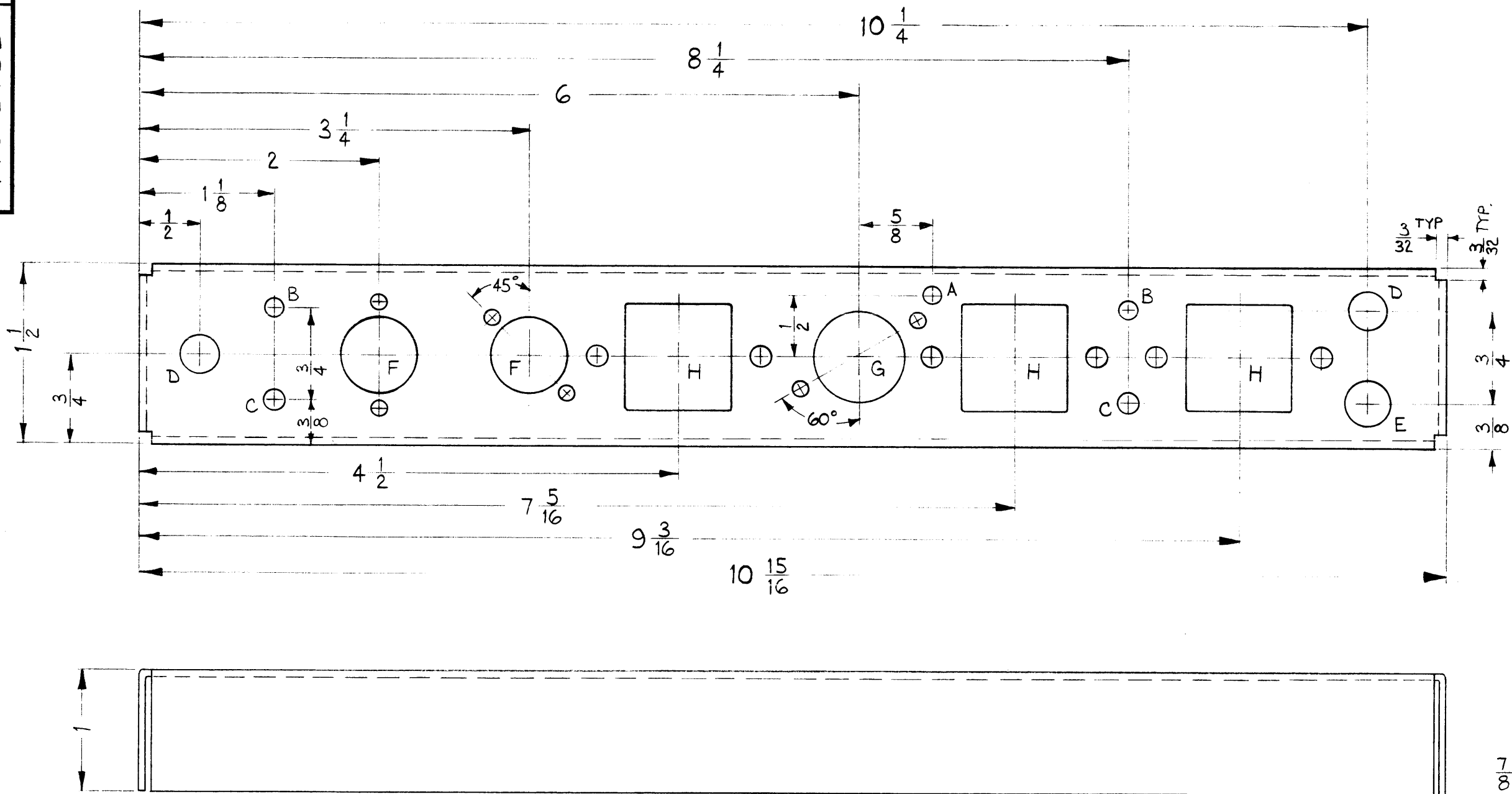
REF: LD-997 (2).

SYM	DESCRIPTION	DATE	CH. NO.	DRAFTS	CHECKER	ENG. APP.
UNLESS OTHERWISE SPECIFIED:						
DIMENSIONS ARE IN INCHES		SCALE: DO NOT SCALE				
TOLERANCES ON FRACTIONS $\pm 1/64$ DECIMALS $\pm .005$ ANGLES $\pm 1/2^\circ$		MAXIMUM ALLOWABLE TOLERANCES HAVE BEEN DETERMINED AND ANY DEVIATIONS WILL BE CAUSE FOR REJECTION. REMOVE ALL BURRS AND SHARP EDGES				

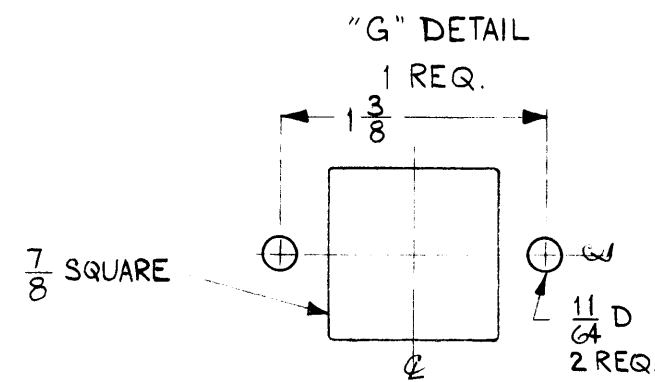
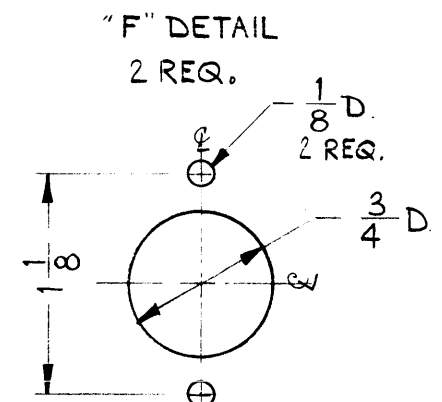
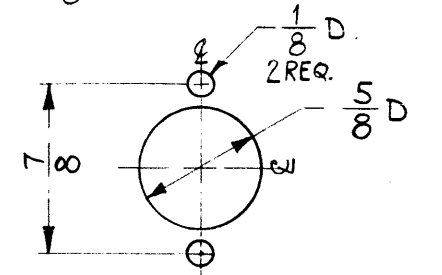
1	TER-25K-A-50				11-18-61
REQ. PER UNIT	MODEL	SECTION	ASS'Y. NO.	DATE	
USED ON					

4	1	NT-129-632-4	NUT, ROUND, SWAGE TYPE	
REQ.	ITEM	PART NO.	DESCRIPTION	SYMBOL
1/8			THE TECHNICAL MATERIEL CORP.	
ALUMINUM			MAMARONECK, NEW YORK	
2024-T4			SWITCH MTG. PLATE	
SEE NOTE				
FINISH & SPEC. NO.			MS-2732	
TYPE & TEMPER		HEAT TREAT. SPEC.	DRAWN	CHECKER
ELEC. DES. APP.		MECH. DES. APP.		

MS-2733



- A ~ $\frac{9}{64}$ DIA. 1 REQ.
- B ~ .166 DIA. 2 "
- C ~ $\frac{11}{64}$ DIA. 2 "
- D ~ $\frac{5}{16}$ DIA. 2 "
- E ~ $\frac{3}{8}$ DIA. 1 "



USE MATERIAL THICKNESS FOR MAX. RADIUS ON ALL BENDS UNLESS OTHERWISE SPECIFIED

REF: LD-1000 (2).

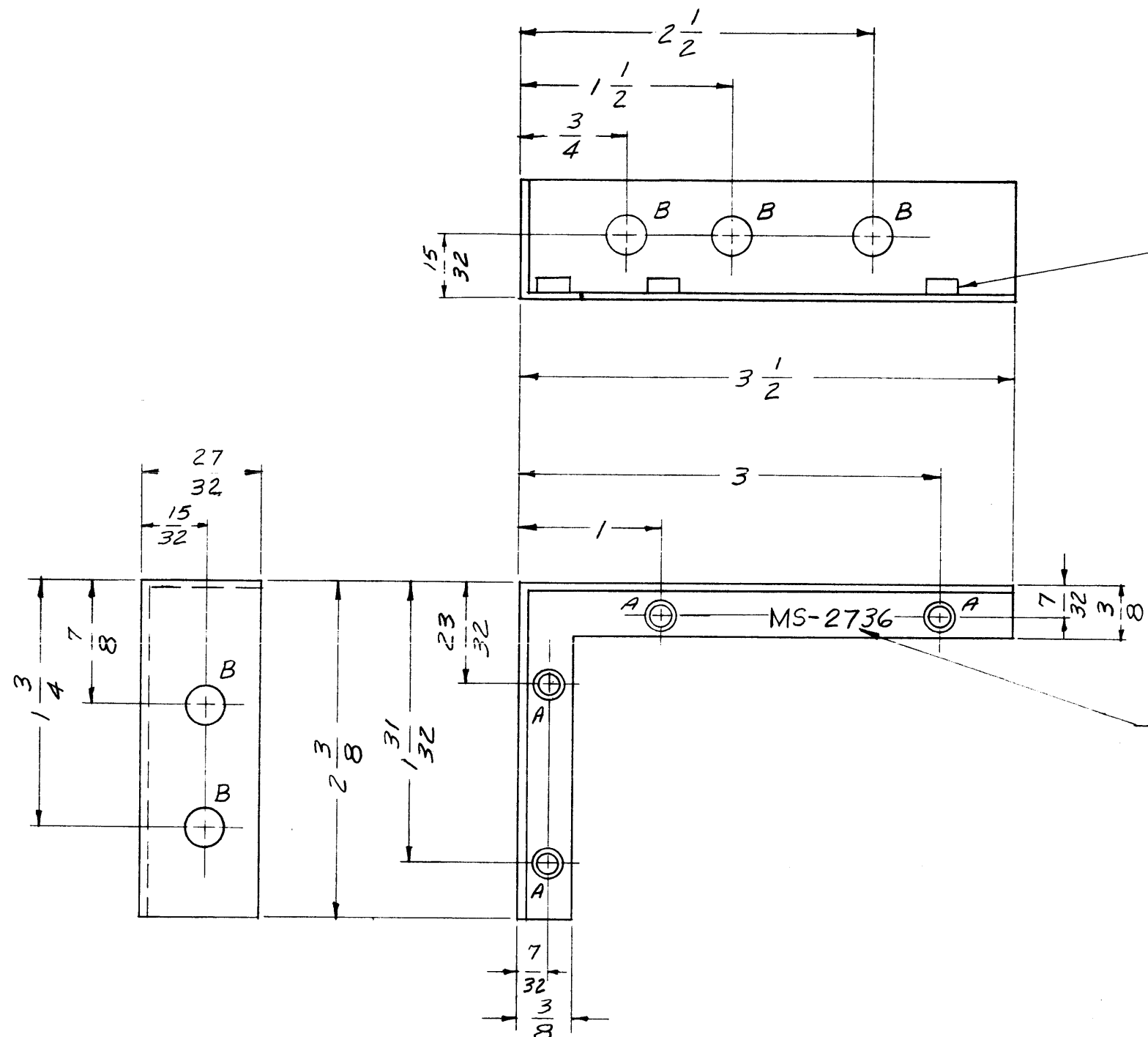
SYM	DESCRIPTION	DATE	CH. NO.	DRAFTS	CHECKER	ENG. APP.
UNLESS OTHERWISE SPECIFIED:		SCALE: FULL (DO NOT SCALE).				
DIMENSIONS ARE IN INCHES		MAXIMUM ALLOWABLE TOLERANCES HAVE BEEN DETERMINED AND ANY DEVIATIONS WILL BE CAUSE FOR REJECTION.				
TOLERANCES ON FRACTIONS ± 1/64 DECIMALS ± .005 ANGLES ± 1/2°		REMOVE ALL BURRS AND SHARP EDGES				

REQ. PER UNIT	MODEL	SECTION	ASS'Y. NO.	DATE
1	HFS-1			8-15-62

REQ.	ITEM	PART NO.	J. STRUMMER	DESCRIPTION	SYMBOL
	.064			THE TECHNICAL MATERIEL CORP.	
	STOCK SIZE			MAMARONECK, NEW YORK	
	ALUMINUM			CHASSIS-REGENERATIVE DIVIDER	
	MATERIAL				
	5052-H32		M.L.F.		
	TYPE & TEMPER	HEAT TREAT. SPEC.	DRAWN	CHECKER	FINAL APPROVAL
	S404 YEL. IRIDITE		JMA	JMA	MS-2733
	FINISH & SPEC. NO.		ELEC. DES. APP.	MECH. DES. APP.	

THE CONTENTS OF THIS DRAWING ARE THE EXCLUSIVE PROPERTY OF THE TECHNICAL MATERIEL CORP. ITS UNAUTHORIZED USE OR REPRODUCTION IN WHOLE OR IN PART IS STRICTLY FORBIDDEN.

MS-2736



HOLES:
 A-.161-.164 DIA. 4 REQ.
 B- 1/4 DIA. 5 REQ.

MOUNT ITEM 1 IN ALL "A" HOLES AFTER FINISHING

METEL STAMP TMC PART NO. MS-2736 IN 1/8 HIGH GOTHIC AS SHOWN.

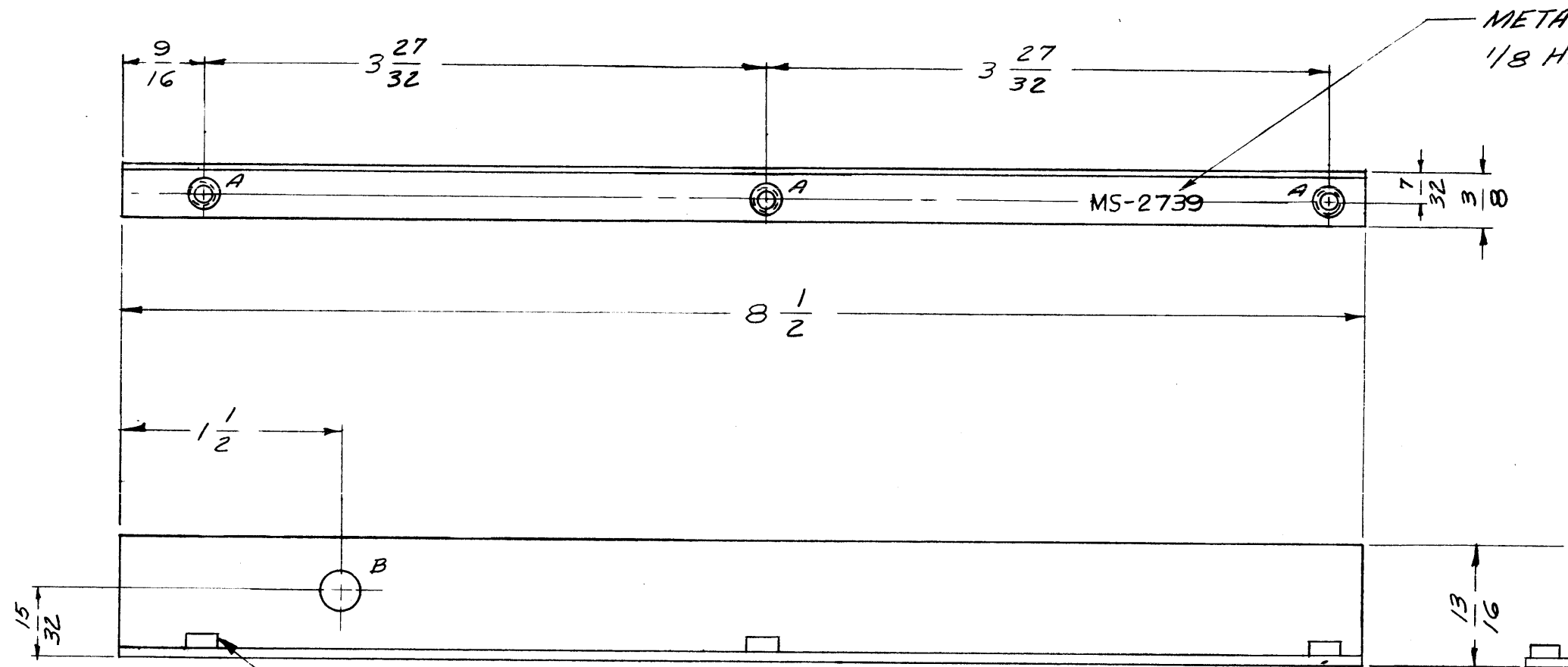
USE MATERIAL THICKNESS FOR MAX. RADIUS ON ALL BENDS UNLESS OTHERWISE SPECIFIED

4	1	NT-129-440-4	NUT, ROUND, SWAGE TYPE	A
REQ.	ITEM	PART NO.	DESCRIPTION	SYMBOL
.064			THE TECHNICAL MATERIEL CORP.	
STOCK SIZE			MAMARONECK, NEW YORK	
ALUMINUM			BRACKET, ANGLE	
MATERIAL			(RF SHIELD #3, MAIN CHASSIS)	
5052-H32			W.S.	
TYPE & TEMPER		HEAT TREAT. SPEC.	DRAWN	CHECKED
S-404 YEL IRIDITE				
FINISH & SPEC. NO.		ELEC. DES. APP.	MECH. DES. APP.	MS-2736

SYM	DESCRIPTION	DATE	CH. NO.	DRAFTS	CHECKER	ENG. APP.
UNLESS OTHERWISE SPECIFIED:		SCALE: DO NOT SCALE				
DIMENSIONS ARE IN INCHES		MAXIMUM ALLOWABLE TOLERANCES HAVE BEEN DETERMINED AND ANY DEVIATIONS WILL BE CAUSE FOR REJECTION.				
TOLERANCES ON		REMOVE ALL BURRS AND SHARP EDGES				
FRACTIONS ± 1/64						
DECIMALS ± .005						
ANGLES ± 1/2°						
A						
1	AFC-2					11-3
REQ. PER UNIT	MODEL	SECTION	ASS'Y. NO.	DATE	USED ON	

THE CONTENTS OF THIS DRAWING ARE THE EXCLUSIVE PROPERTY OF THE TECHNICAL MATERIEL CORP. ITS UNAUTHORIZED USE OR REPRODUCTION IN WHOLE OR IN PART IS STRICTLY FORBIDDEN.

MS2739



METAL STAMP TMC PART NO. 1/8 HIGH GOTHIC AS SHOWN.

HOLES:
 A - .161-.164 3 REQ.
 B - 1/4 DIA. 1 REQ.

MOUNT ITEM 1 IN ALL "A" HOLES AFTER FINISHING

USE MAXIMUM THICKNESS FOR MAXIMUM ON ALL BENDS UNLESS OTHERWISE SPECIFIED. MOUNT ITEMS AFTER FINISHING.

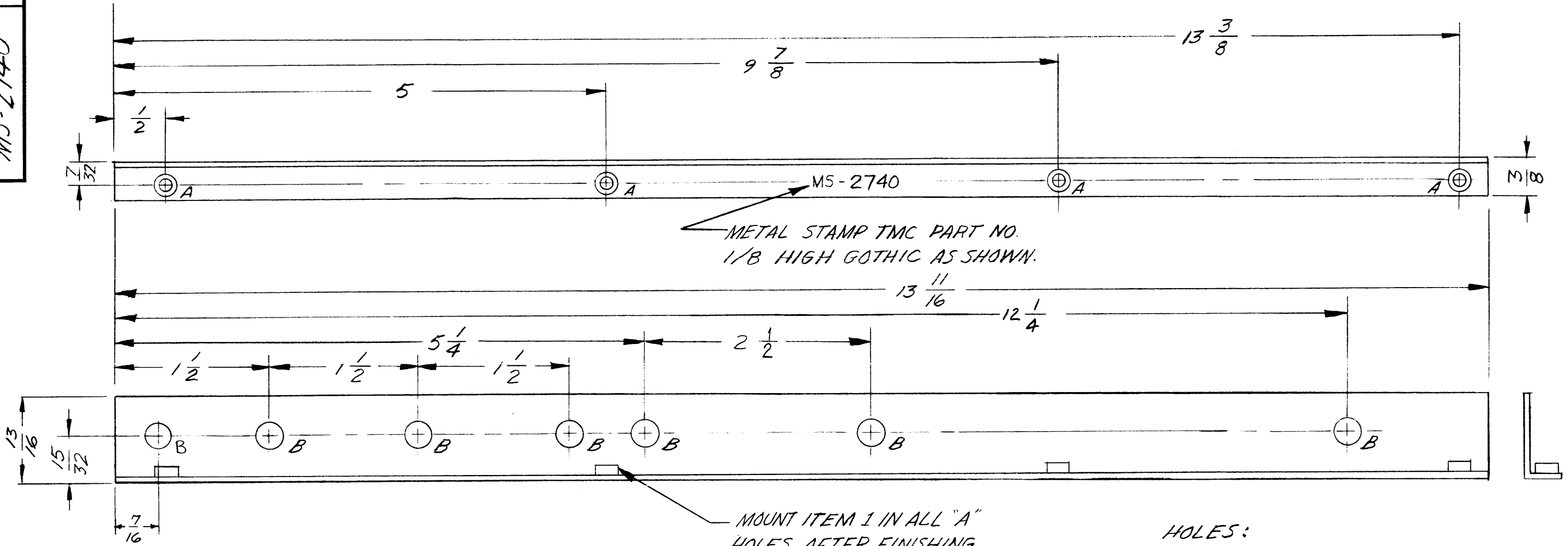
PROPERTY OF THE TECHNICAL MATERIEL CORPORATION
 MAMARONECK, NEW YORK

3	1	NT-129-440-A	NUT, ROUND, SWAGE TYPE	A
REQ.	ITEM	PART NO.	DESCRIPTION	SYMBOL
		.064	THE TECHNICAL MATERIEL CORP. MAMARONECK, NEW YORK	
		ALUMINUM	BRACKET, ANGLE (MAIN CHASSIS) RF SHIELD #1	
		5052-H32	W. S.	STM
		YELLOW IRIDITE	W. S.	STM
		11-3-61	W. S.	STM
		MS-2739	W. S.	STM

SYM	DESCRIPTION	DATE	CH. NO.	DRAFTS	CHECKER	ENG. APP.
	UNLESS OTHERWISE SPECIFIED: DIMENSIONS ARE IN INCHES TOLERANCES ON FRACTIONS ± 1/64 DECIMALS ± .005 ANGLES ± 1/2°					
A	SCALE: DO NOT SCALE MAXIMUM ALLOWABLE TOLERANCES HAVE BEEN DETERMINED AND ANY DEVIATIONS WILL BE CAUSE FOR REJECTION. REMOVE ALL BURRS AND SHARP EDGES					

REQ. PER UNIT	MODEL	SECTION	ASS'Y. NO.	DATE
1	AFC-2			11-3-61
USED ON				

MS-2740



METAL STAMP TMC PART NO. 1/8 HIGH GOTHIC AS SHOWN.

MOUNT ITEM 1 IN ALL "A" HOLES AFTER FINISHING

HOLES:
 A - .161-.164 DIA. 4 REQ.
 B - 1/4 DIA. 7 REQ.

USE MATERIAL THICKNESS FOR MAX. RADIUS ON ALL BENDS UNLESS OTHERWISE SPECIFIED

PROPERTY OF THE TECHNICAL MATERIEL CORPORATION
 MAMARONECK, NEW YORK

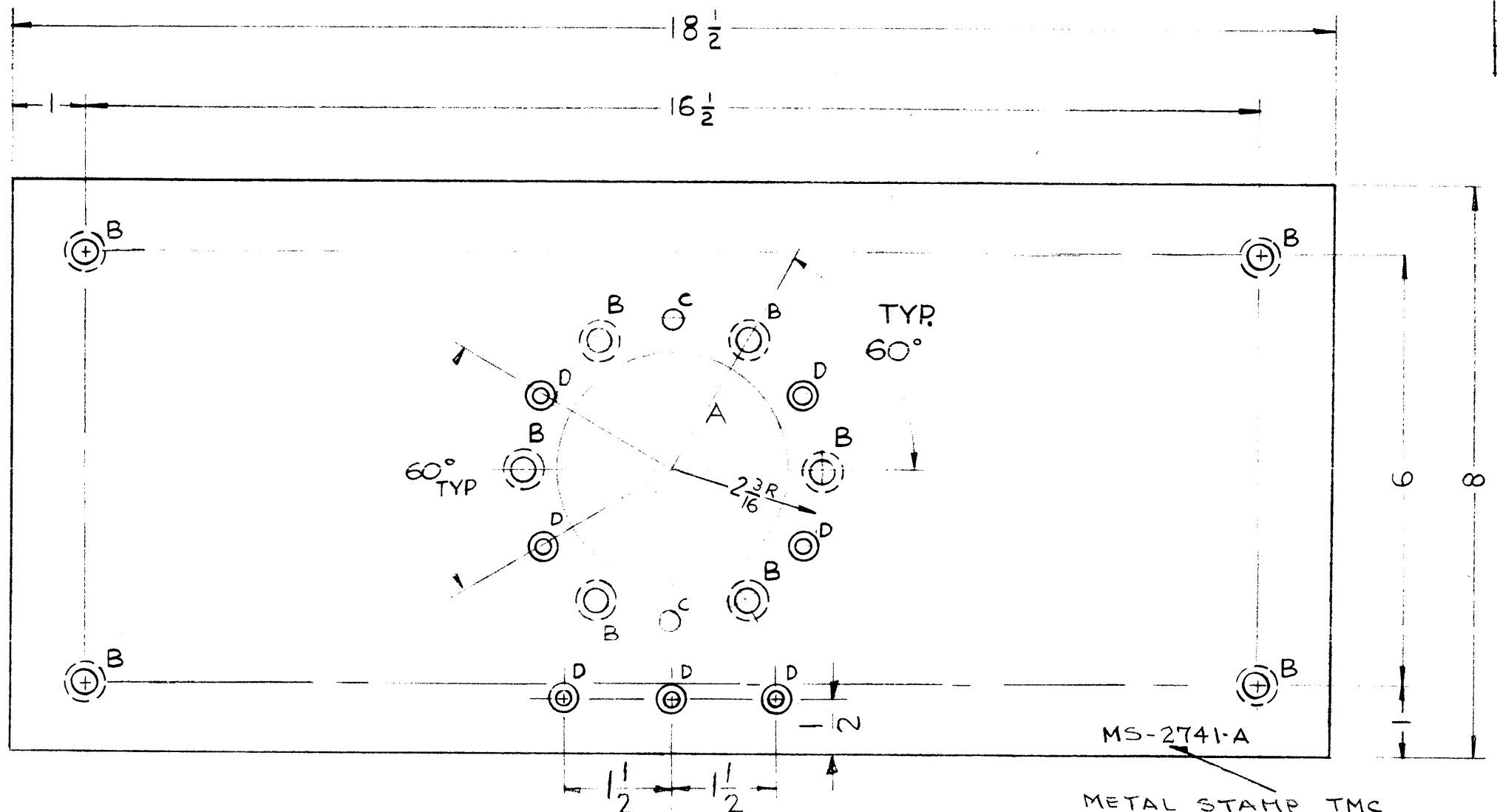
SYM	DESCRIPTION	DATE	CH. NO.	DRAFTS	CHECKER	ENG. APP.
UNLESS OTHERWISE SPECIFIED:						
DIMENSIONS ARE IN INCHES						
TOLERANCES ON FRACTIONS $\pm 1/64$ DECIMALS $\pm .005$ ANGLES $\pm 1/2^\circ$						
SCALE: MAXIMUM ALLOWABLE TOLERANCES HAVE BEEN DETERMINED AND ANY DEVIATIONS WILL BE CAUSE FOR REJECTION. REMOVE ALL BURRS AND SHARP EDGES						

REQ. PER UNIT	1	MODEL	AFC-2	SECTION		ASS'Y. NO.		DATE	11-3-61
USED ON									

4	1	NT-129-440-4	NUT, ROUND, SWAGE TYPE	A
REQ.	ITEM	PART NO.	DESCRIPTION	SYMBOL
		.064	THE TECHNICAL MATERIEL CORP. MAMARONECK, NEW YORK	
STOCK SIZE			BRACKET, ANGLE (RF SHIELD # 2 MAIN CHASSIS)	
MATERIAL			ALUMINUM	
5052-H32			wh	J. De
TYPE & TEMPER	HEAT TREAT. SPEC.	DRAWN	CHECKER	FINAL APPROVAL
5-404 YEL. IRIDITE			4wf	MS-2740
FINISH & SPEC. NO.		ELEC. DES. APP.	MECH. DES. APP.	

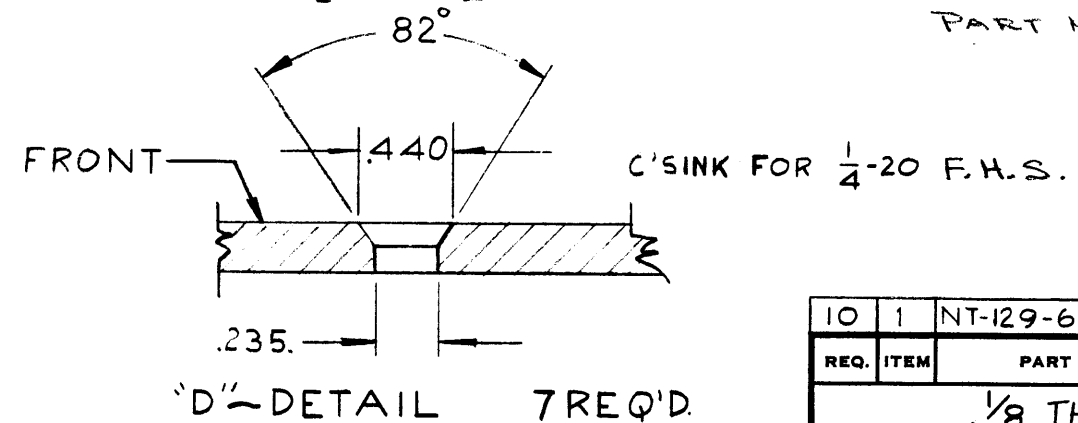
MS-2741 A

LEGEND		
HOLE	DESCRIPTION	REQ'D.
A	3 1/4 DIA	1
B	.484-.487 DIA.	10
C	17/64 DIA.	2
D	SEE DETAIL	7



MOUNT ITEM 1 IN ALL "B" HOLES AS SHOWN AFTER FINISHING.

METAL STAMP TMC PART NO 1/8 HIGH GOTHIC



SYM	DESCRIPTION	DATE	CH. NO.	DRAFTS	CHECKER	ENG. APP.
A	4 B Holes (corners) Were C Holes	11-20-61	5932	W.H.	W.H.	W.H.

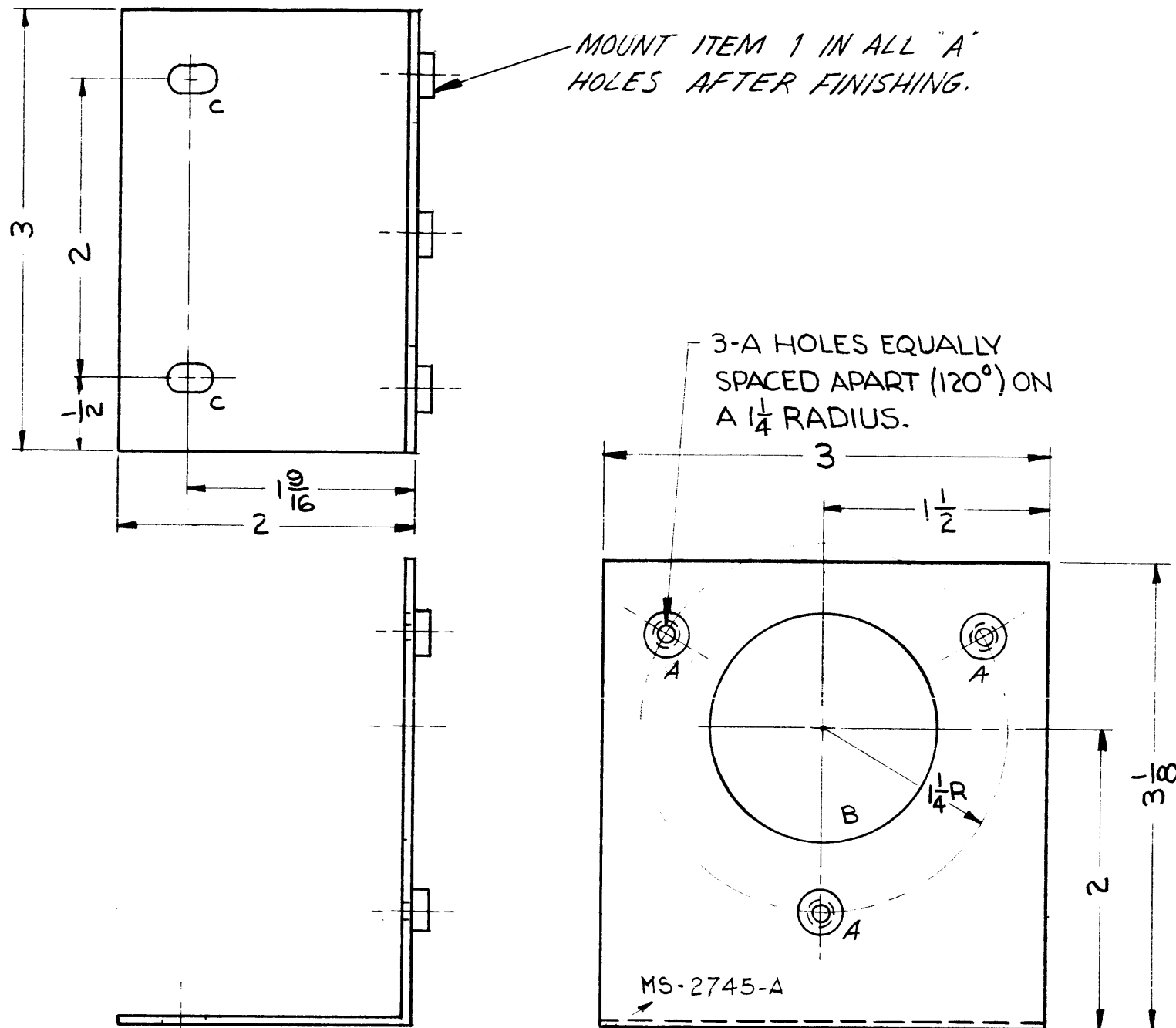
UNLESS OTHERWISE SPECIFIED:
 DIMENSIONS ARE IN INCHES
 TOLERANCES ON FRACTIONS ± 1/64 DECIMALS ± .005 ANGLES ± 1/2°

SCALE:
 MAXIMUM ALLOWABLE TOLERANCES HAVE BEEN DETERMINED AND ANY DEVIATIONS WILL BE CAUSE FOR REJECTION.
 REMOVE ALL BURRS AND SHARP EDGES

REQ. PER UNIT	1	TRC-20K	MODEL	SECTION	ASS'Y. NO.	DATE	10-23-61
USED ON							

10	1	NT-129-616-6	NUT, ROUND, SWAGE TYPE	B
REQ.	ITEM	PART NO.	DESCRIPTION	SYMBOL
			1/8 THK. STOCK SIZE	
			ALUMINUM	THE TECHNICAL MATERIEL CORP. MAMARONECK, NEW YORK
				PLATE, REINFORCEMENT, 50Ω
		5052-H32	TYPE & TEMPER	HEAT TREAT. SPEC.
			DRAWN	CHECKER
		S-404 YELLOW IRIDITE	FINISH & SPEC. NO.	ELEC. DES. APP. MECH. DES. APP.
				MS-2741 A

MS-2745 A



MOUNT ITEM 1 IN ALL "A" HOLES AFTER FINISHING.

3-A HOLES EQUALLY SPACED APART (120°) ON A 1/4 RADIUS.

- HOLES:
- A- .221-.224 DIA. 3 REQ
 - B- 1/2 DIA. 1 REQ.
 - C- 3/16 x 5/16 SLOT 2 REQ.

THE TECHNICAL MATERIEL CORPORATION
MAMARONECK, NEW YORK

Property of:
THE TECHNICAL MATERIEL CORPORATION
MAMARONECK, NEW YORK

METAL STAMP TMC PART
1/8 HIGH GOTHIC AS SHOWN

SYM	DESCRIPTION	DATE	CH. NO.	DRAFTS	CHECKER	ENG. APP.
A	STOCK SIZE WAS .062	11-27-61	5942	G.D.L.		

UNLESS OTHERWISE SPECIFIED:
DIMENSIONS ARE IN INCHES
TOLERANCES ON
FRACTIONS ± 1/64 DECIMALS ± .05 ANGLES ± 1/2°

SCALE: 1"=1"

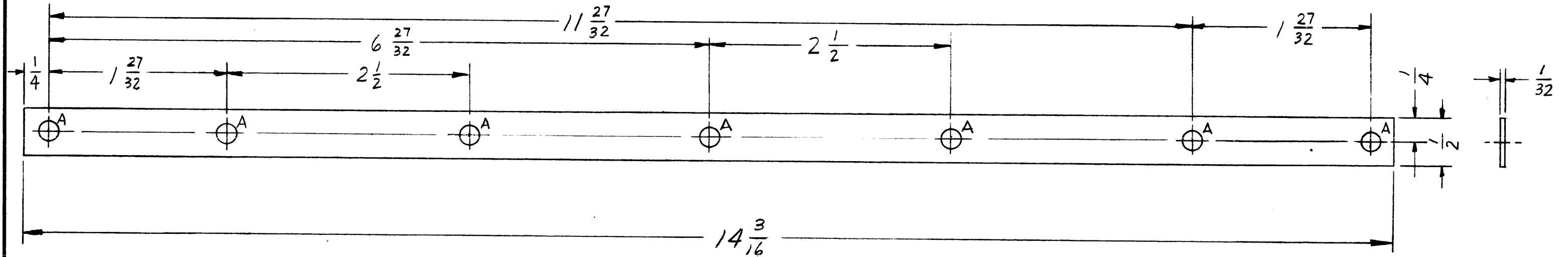
MAXIMUM ALLOWABLE TOLERANCES HAVE BEEN DETERMINED AND ANY DEVIATIONS WILL BE CAUSE FOR REJECTION.
REMOVE ALL BURRS AND SHARP EDGES

REQ. PER UNIT	MODEL	SECTION	ASS'Y. NO.	DATE
1	TER 250/300U		A-2225	11-4-61

3	1	NT-129-832-4	NUT, ROUND, SWAGE TYPE	A
REQ.	ITEM	PART NO.	DESCRIPTION	SYMBOL
		.064	THE TECHNICAL MATERIEL CORP. MAMARONECK, NEW YORK	
		ALUMINUM	BRACKET, RESISTOR SUPPORT	
		5052-H32	P. Jurek	
		S-404 YEL. IRIDITE	aa	
		MS-2745		A

MS-2754

HOLES:
A-.189 DIA 7 REQ'D.



REF. A-2232 TB ASS'Y. (8)

SYM	DESCRIPTION	DATE	CH. NO.	DRAFTS	CHECKER	ENG. APP.

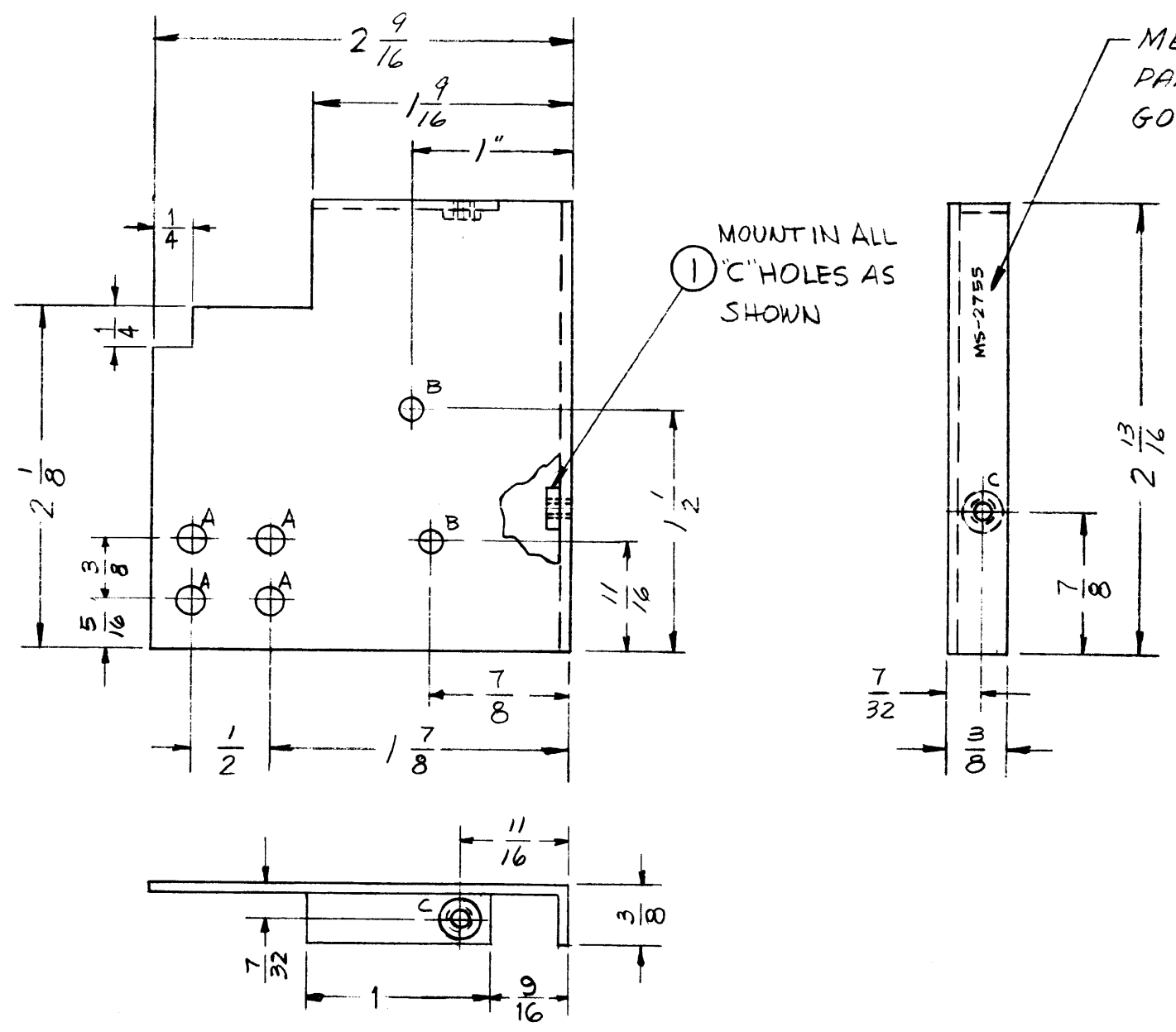
UNLESS OTHERWISE SPECIFIED:
DIMENSIONS ARE IN INCHES
TOLERANCES ON
FRACTIONS $\pm 1/64$ DECIMALS $\pm .005$ ANGLES $\pm 1/2^\circ$

SCALE:
MAXIMUM ALLOWABLE TOLERANCES HAVE BEEN DETERMINED AND ANY DEVIATIONS WILL BE CAUSE FOR REJECTION.
REMOVE ALL BURRS AND SHARP EDGES

REQ. PER UNIT	MODEL	SECTION	ASS'Y. NO.	DATE
1	SBS-1		A-2232	11-13-61

REQ.	ITEM	PART NO.	DESCRIPTION	SYMBOL
			.032 THICK STOCK SIZE	THE TECHNICAL MATERIEL CORP. MAMARONECK, NEW YORK
			COPPER	STRIP, TERMINAL, GROUNDING
			MATERIAL	
			COMM. SOFT	
			TYPE & TEMPER	HEAT TREAT. SPEC.
			5245-SILVER PLATE	
			FINISH & SPEC. NO.	ELEC. DES. APP. MECH. DES. APP.
				MS-2754

MS-2755 A



HOLES:
 A - .166 DIA. 4 REQ'D.
 B - 1/8 DIA. 2 REQ'D.
 C - .161-.164 DIA. 2 REQ'D.

PROPERTY OF THE TECHNICAL MATERIEL CORPORATION
 MAMARONECK, NEW YORK

SYM	DESCRIPTION	DATE	CH. NO.	DRAFTS	CHECKER	ENG. APP.
A	2 9/16 WAS 2 3/8, 1 9/16 WAS 1 3/8, 1 WAS 1 1/6	12/15/61	15401	F.V.V.	J.C.B.	W.N.K.

UNLESS OTHERWISE SPECIFIED:
 DIMENSIONS ARE IN INCHES
 TOLERANCES ON FRACTIONS ± 1/64 DECIMALS ± .005 ANGLES ± 1/20

SCALE: DO NOT SCALE
 MAXIMUM ALLOWABLE TOLERANCES HAVE BEEN DETERMINED AND ANY DEVIATIONS WILL BE CAUSE FOR REJECTION.
 REMOVE ALL BURRS AND SHARP EDGES

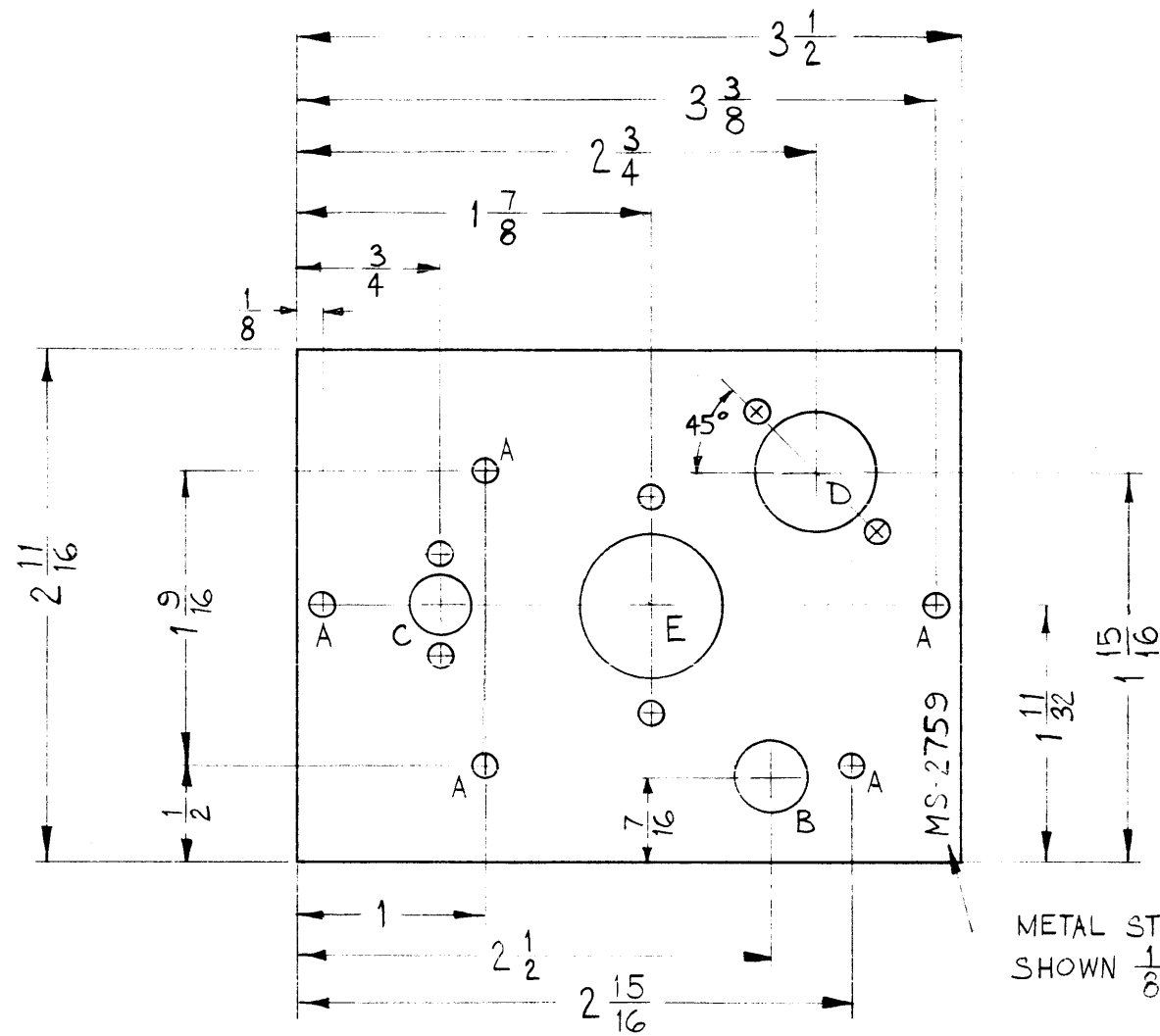
USE MATERIAL THICKNESS FOR MAX. RADIUS ON ALL BENDS UNLESS OTHERWISE SPECIFIED

MOUNT INSERTS AFTER FINISHING

REQ. PER UNIT	MODEL	SECTION	ASS'Y. NO.	DATE
1	SBS-1			11-14-61

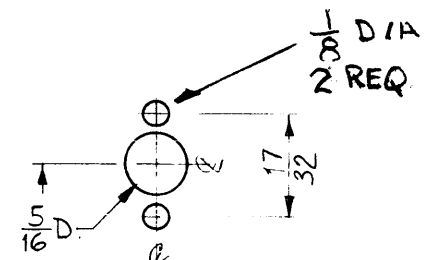
REQ.	ITEM	PART NO.	DESCRIPTION	SYMBOL
2	1	NT-129-440-4	NUT, ROUND, SWAGE TYPE	C
		.051 THICK	THE TECHNICAL MATERIEL CORP. MAMARONECK, NEW YORK	
		ALUMINUM	SHIELD, BRACKET CONVERTER SECTION	
		5052-H32	ab	RUTZZO
		TYPE & TEMPER	HEAT TREAT. SPEC.	DRAWN
		S404-YEL. IRIDITE		J.P.D.
		FINISH & SPEC. NO.	ELEC. DES. APP.	MECH. DES. APP.
				MS-2755 A

MS-2759

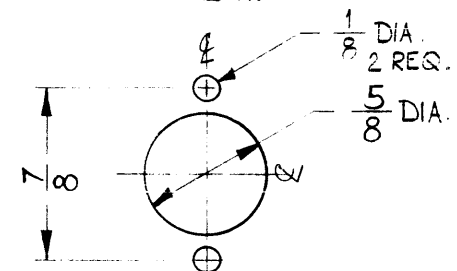


METAL STAMP TMC PART NO. AS SHOWN $\frac{1}{8}$ HIGH GOTHIC.

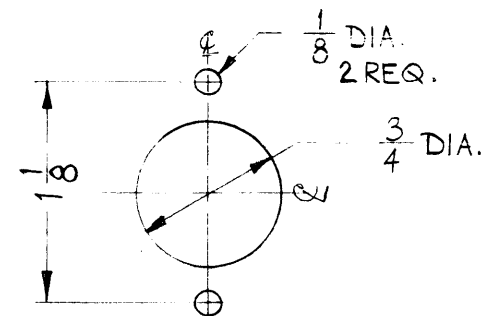
A - $\frac{1}{8}$ DIA. 5 REQ.
 B - $\frac{3}{8}$ DIA. 1 "



"C" DETAIL
1 REQ.



"D" DETAIL
1 REQ.



"E" DETAIL
1 REQ.

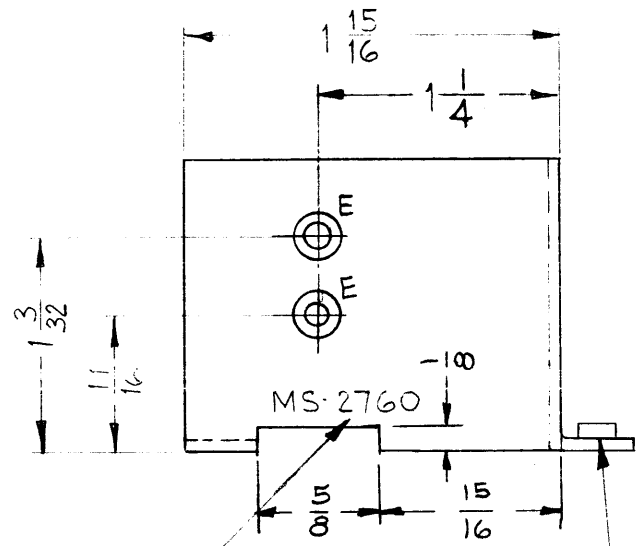
Property of:
 THE TECHNICAL MATERIEL CORPORATION
 MAMARONECK, NEW YORK

SYM	DESCRIPTION	DATE	CH. NO.	DRAFTS	CHECKER	ENG. APP.
UNLESS OTHERWISE SPECIFIED:						
DIMENSIONS ARE IN INCHES						
TOLERANCES ON FRACTIONS $\pm 1/64$ DECIMALS $\pm .05$ ANGLES $\pm 1/2^\circ$						
SCALE: DO NOT SCALE						
MAXIMUM ALLOWABLE TOLERANCES HAVE BEEN DETERMINED AND ANY DEVIATIONS WILL BE CAUSE FOR REJECTION. REMOVE ALL BURRS AND SHARP EDGES						

REQ. PER UNIT	MODEL	SECTION	ASSY. NO.	DATE
2	AFC-2			11-16-61
USED ON				

REQ.	ITEM	PART NO.	DESCRIPTION	SYMBOL
		.064	THE TECHNICAL MATERIEL CORP. MAMARONECK, NEW YORK	
		ALUMINUM	CHASSIS, ELECTRICAL	
			CRYSTAL OSC.	
	5052-H-32		DRAWN	FINAL APPROVAL
	S404 YEL. IRIDITE		CHECKER	
			ELEC. DES. APP.	
			MECH. DES. APP.	MS-2759

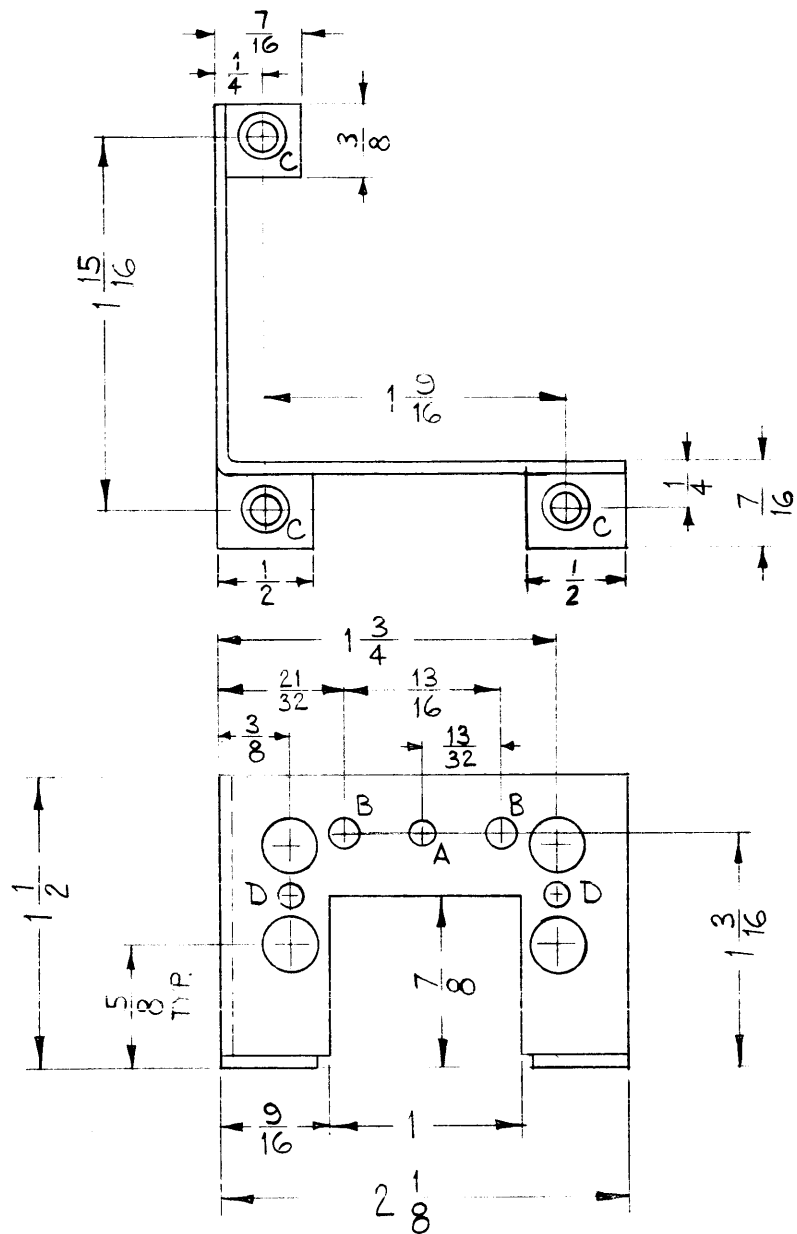
MS-2760



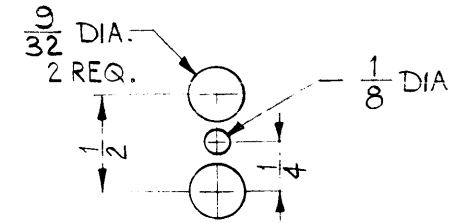
METAL STAMP TMC PART NO.
AS SHOWN $\frac{1}{8}$ HIGH GOTHIC.

1

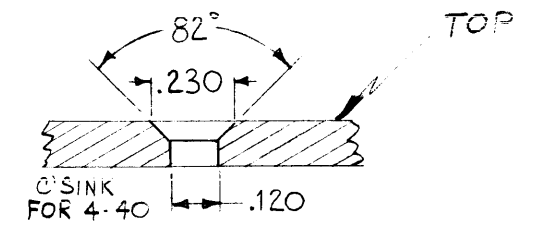
MOUNT ITEM 1 IN ALL 'C' HOLES
AS SHOWN AFTER FINISHING.



- A ~ $\frac{3}{16}$ DIA. 1 REQ.
- B ~ .159 DIA. 2 "
- C ~ .161-.164 DIA 3 "



"D" DETAIL
2 REQ.



"E" DETAIL
2 REQ.

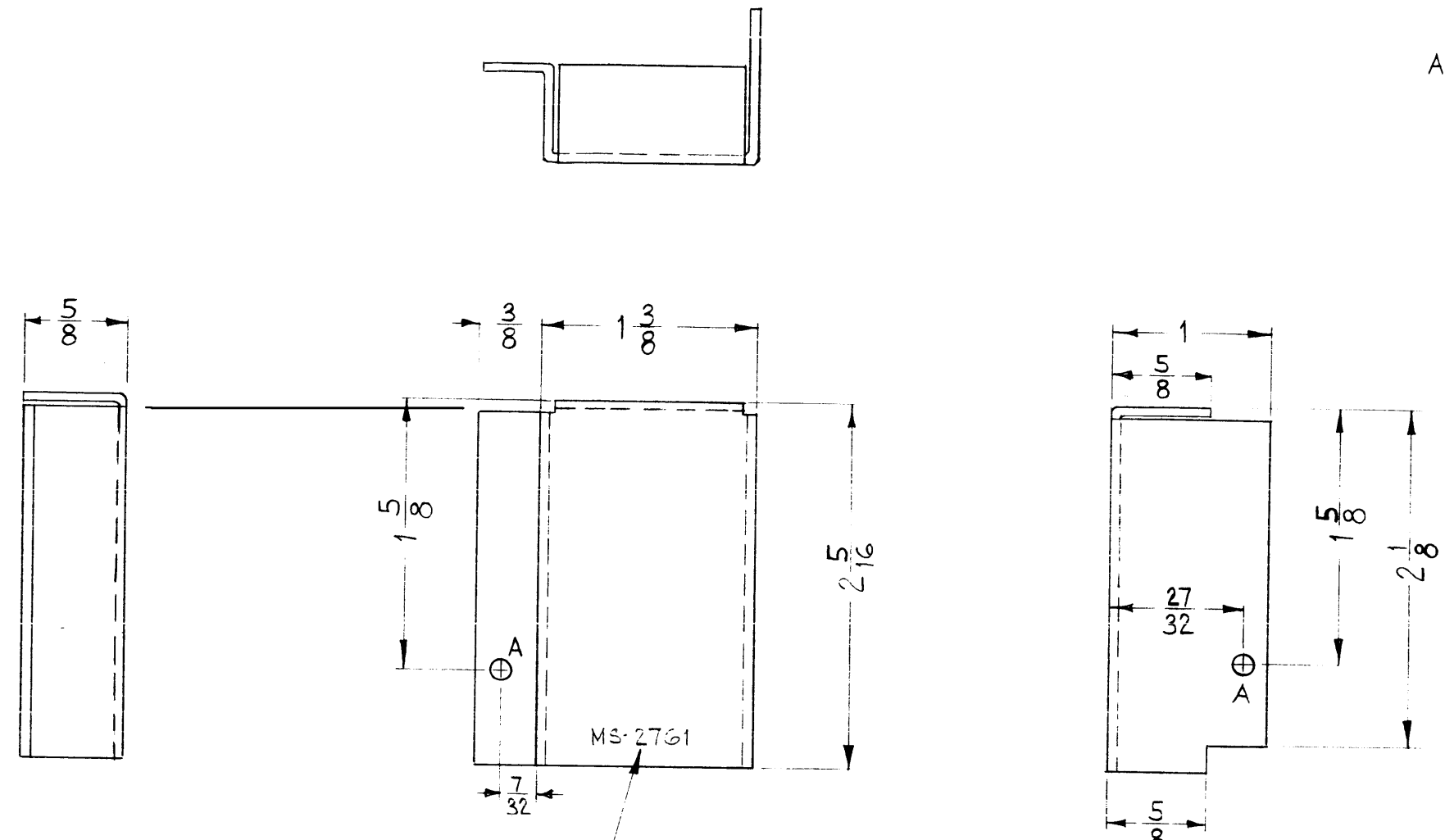
SYM	DESCRIPTION	DATE	CH. NO.	DRAFTS	CHECKER	ENG. APP.
UNLESS OTHERWISE SPECIFIED:						
DIMENSIONS ARE IN INCHES						
TOLERANCES ON FRACTIONS $\pm 1/64$ DECIMALS $\pm .005$ ANGLES $\pm 1/2^\circ$						
SCALE: DO NOT SCALE		MAXIMUM ALLOWABLE TOLERANCES HAVE BEEN DETERMINED AND ANY DEVIATIONS WILL BE CAUSE FOR REJECTION. REMOVE ALL BURRS AND SHARP EDGES				

REQ. PER UNIT	MODEL	SECTION	ASS'Y. NO.	DATE
2	AFC-2			11-16-61
USED ON				

REQ.	ITEM	PART NO.	DESCRIPTION	SYMBOL
3	1	NT-129-440-4	NUT, ROUND, SWAGE TYPE	
.051			THE TECHNICAL MATERIEL CORP. MAMARONECK, NEW YORK	
ALUMINUM			BRACKET, OVEN	
5052-H32			WAF	AWE
TYPE & TEMPER		HEAT TREAT. SPEC.	DRAWN	CHECKER
S404 YEL. IRIDITE			MS-2760	
FINISH & SPEC. NO.			ELEC. DES. APP.	MECH. DES. APP.

MS-2761

A = 1/8 DIA. 2 REQ.



METAL STAMP TMC PART NO.
AS SHOWN 1/8 HIGH GOTHIC.

THE TECHNICAL MATERIEL CORPORATION
MAMARONECK, NEW YORK

SYM	DESCRIPTION	DATE	CH. NO.	DRAFTS	CHECKER	ENG. APP.
	UNLESS OTHERWISE SPECIFIED: DIMENSIONS ARE IN INCHES TOLERANCES ON FRACTIONS ± 1/64 DECIMALS ± .005 ANGLES ± 1/20					

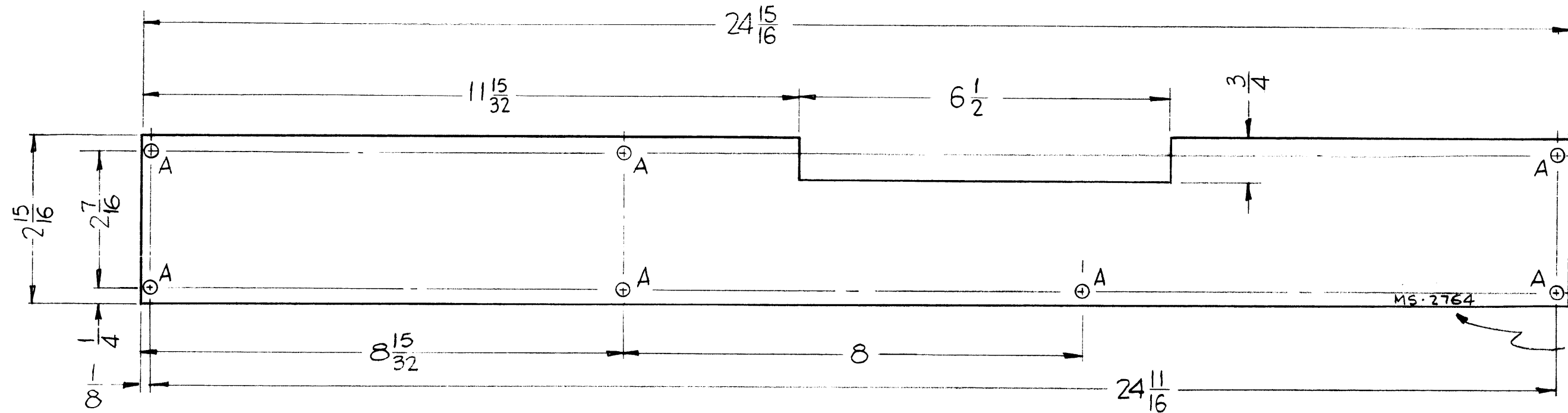
REQ. PER UNIT	MODEL	SECTION	ASS'Y. NO.	DATE
2	AFC-3			4-12-62
2	AFC-2A			4-12-62
2	AFC-2			11-16-61

REQ. ITEM	PART NO.	DESCRIPTION	SYMBOL
	.051	THE TECHNICAL MATERIEL CORP. MAMARONECK, NEW YORK	
	ALUMINUM	COVER, OVEN TERMINAL	
	5052-H32		
	S404 YEL IRIDITE		
	MS-2761		

MS-2764

THE CONTENTS OF THIS DRAWING ARE THE EXCLUSIVE PROPERTY OF THE TECHNICAL MATERIEL CORP. ITS UNAUTHORIZED USE OR REPRODUCTION IN WHOLE OR IN PART IS STRICTLY FORBIDDEN.

HOLE	DESCRIPTION	REQ.
A	3/16 DIA.	7



METAL STAMP TMC PART NO $\frac{1}{8}$ HIGH GOTHIC AS SHOWN.

PROPERTY OF THE TECHNICAL MATERIEL CORPORATION
 MAMARONECK, NEW YORK

Property of:
 THE TECHNICAL MATERIEL CORPORATION
 MAMARONECK, NEW YORK

THIS DRAWING IS THE PROPERTY OF THE TECHNICAL MATERIEL CORPORATION. IT IS LOANED TO YOU FOR YOUR INFORMATION ONLY AND MAY NOT BE REPRODUCED OR USED IN ANY MANNER WITHOUT THE WRITTEN PERMISSION OF THE TECHNICAL MATERIEL CORPORATION. THE DRAWING IS LOANED TO YOU FOR YOUR INFORMATION ONLY AND IS SUBJECT TO RECALL AT ANY TIME.

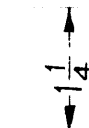
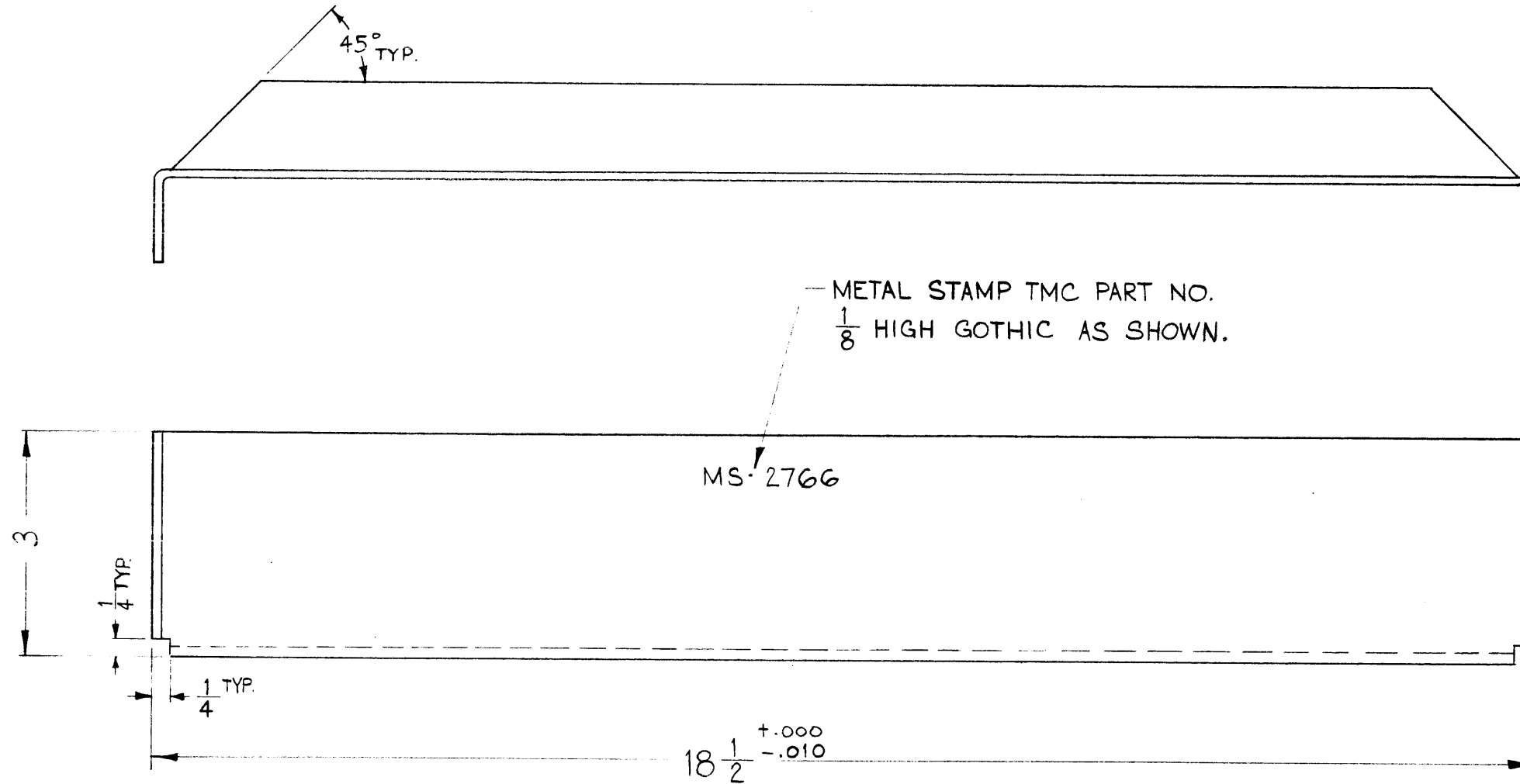
SYM	DESCRIPTION	DATE	CH. NO.	DRAFTS	CHECKER	ENG. APP.
UNLESS OTHERWISE SPECIFIED:						
DIMENSIONS ARE IN INCHES						
TOLERANCES ON						
FRACTIONS $\pm 1/64$ DECIMALS $\pm .005$ ANGLES $\pm 1/2^\circ$						
SCALE: Do Not Scale						
MAXIMUM ALLOWABLE TOLERANCES HAVE BEEN DETERMINED AND ANY DEVIATIONS WILL BE CAUSE FOR REJECTION. REMOVE ALL BURRS AND SHARP EDGES						
REQ. PER UNIT	MODEL	SECTION	ASS'Y. NO.	DATE		
1	GPT-40K	KIT-104		12-28-61		
USED ON						

REQ.	ITEM	PART NO.	DESCRIPTION	SYMBOL
1/8 THK.			THE TECHNICAL MATERIEL CORP. MAMARONECK, NEW YORK	
STOCK SIZE				
ALUMINUM			PLATE, INSERT	
MATERIAL			PA DECK	
5052-H32				
TYPE & TEMPER		HEAT TREAT. SPEC.	DRAWN	CHECKED
S404 IRIDITE				
FINISH & SPEC. NO.		ELEC. DES. APP.	MECH. DES. APP.	MS-2764

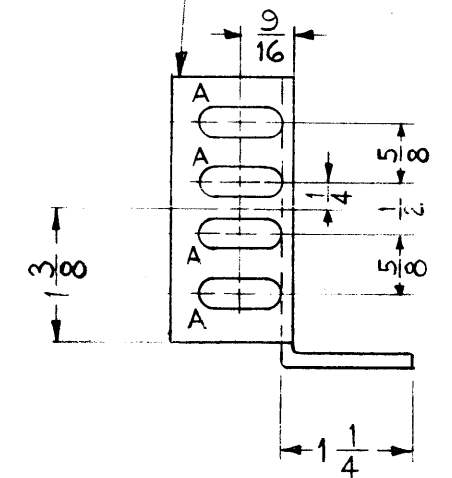
MS-2766

THE CONTENTS OF THIS DRAWING ARE THE EXCLUSIVE PROPERTY OF THE TECHNICAL MATERIEL CORP. ITS UNAUTHORIZED USE OR REPRODUCTION IN WHOLE OR IN PART IS STRICTLY FORBIDDEN.

A ~ $\frac{1}{4} \times \frac{7}{8}$ SLOTS 8 REQ.



OPPOSITE SIDE IDENTICAL



Property of:
 THE TECHNICAL MATERIEL CORPORATION
 MAMARONECK, NEW YORK

REQ.	ITEM	PART NO.	DESCRIPTION	SYMBOL
		1/8	THE TECHNICAL MATERIEL CORP. MAMARONECK, NEW YORK	
		STOCK SIZE		
		ALUMINUM	UNIT, MOUNTING TRAY	
		MATERIAL		
		5052-H32	W.D.F. + J.D.	Final Approval
		TYPE & TEMPER	DRAWN	CHECKED
		HEAT TREAT. SPEC.		
		S404 YEL. IRIDITE		MS-2766
		FINISH & SPEC. NO.	ELEC. DES. APP.	MECH. DES. APP.

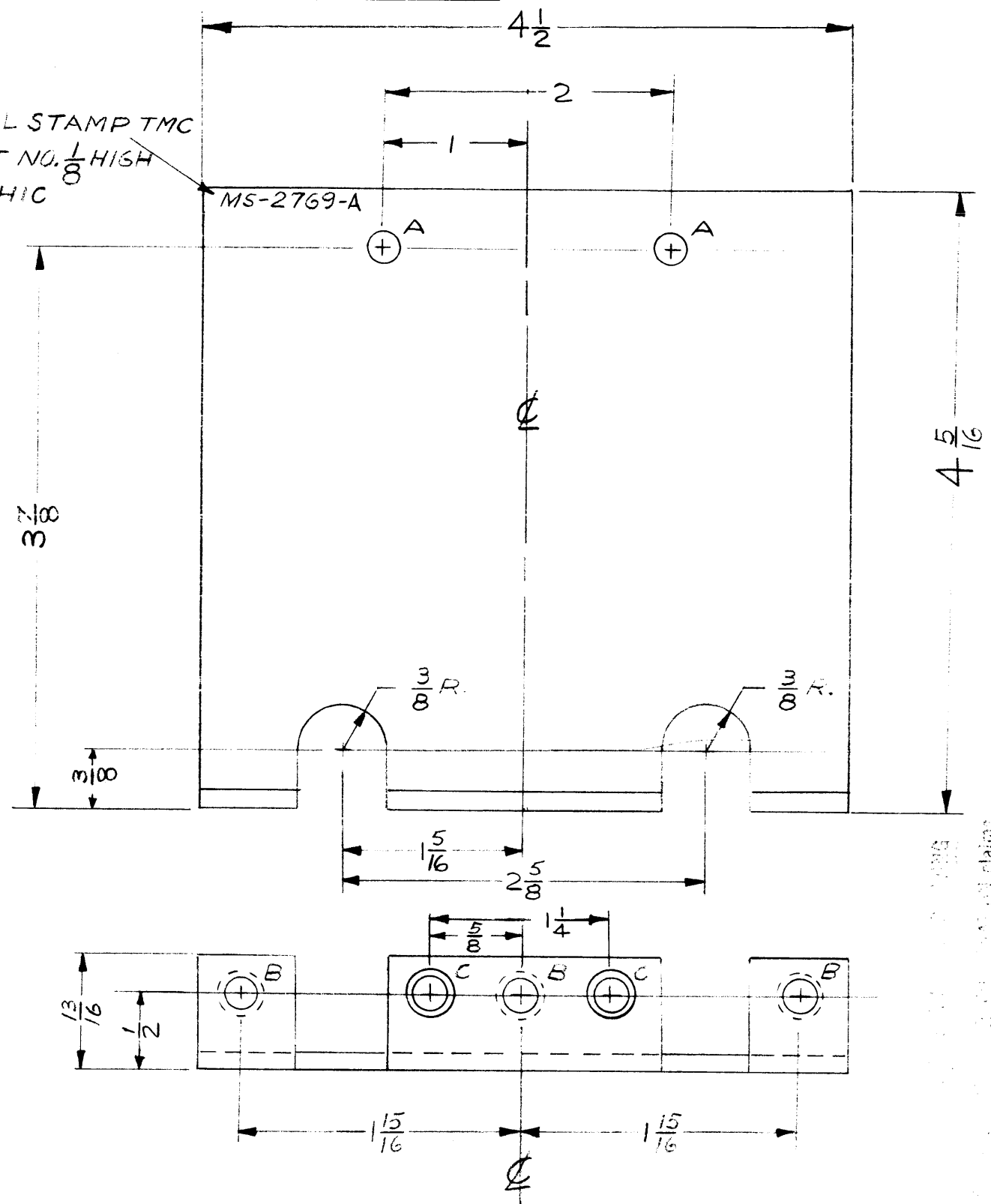
SYM	DESCRIPTION	DATE	CH. NO.	DRAFTS	CHECKER	ENG. APP.
UNLESS OTHERWISE SPECIFIED:		SCALE: 2:1 (DO NOT SCALE).				
DIMENSIONS ARE IN INCHES		MAXIMUM ALLOWABLE TOLERANCES HAVE BEEN DETERMINED AND ANY DEVIATIONS WILL BE CAUSE FOR REJECTION.				
TOLERANCES ON FRACTIONS ± 1/64 DECIMALS ± .005 ANGLES ± 1/2°		REMOVE ALL BURRS AND SHARP EDGES				

REQ. PER UNIT	MODEL	SECTION	ASS'Y. NO.	DATE
2	BAKER			11-27-61
USED ON				

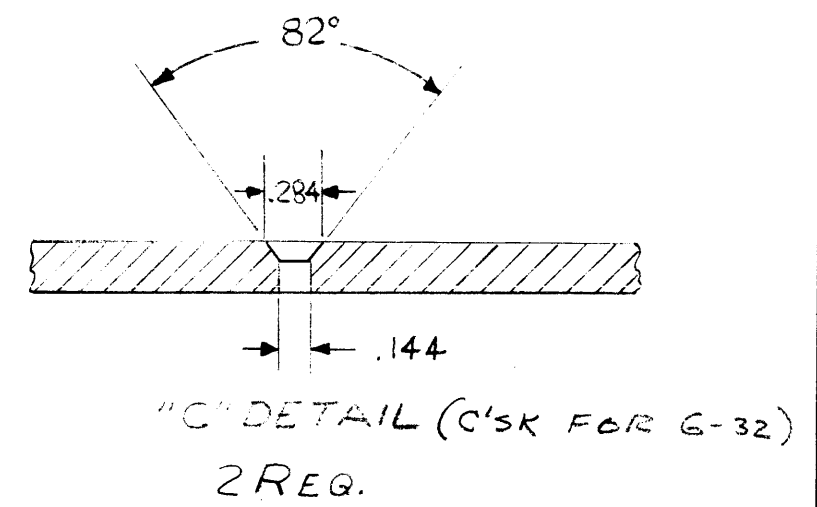
MS-2769 A

THE CONTENTS OF THIS DRAWING ARE THE EXCLUSIVE PROPERTY OF THE TECHNICAL MATERIEL CORP. ITS UNAUTHORIZED USE OR REPRODUCTION IN WHOLE OR IN PART IS STRICTLY FORBIDDEN.

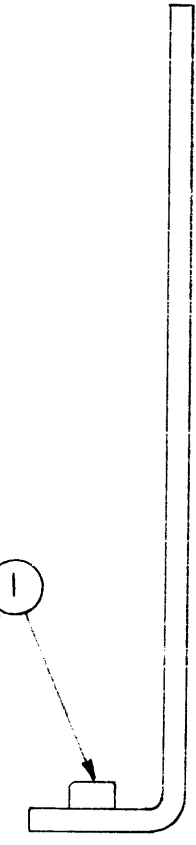
METAL STAMP TMC
PART NO. 1/8 HIGH
GOTHIC



LEGEND		
HOLE	DESCRIPTION	REQ.
A	13/64 DIA.	2
B	.221-.224 DIA.	



MOUNT ITEM 1
IN ALL "B" HOLES
AS SHOWN AFTER
FINISHING.



USE MATERIAL THICKNESS FOR MAX. RADIUS
ON ALL BENDS UNLESS OTHERWISE SPECIFIED

MOUNT INSERTS AFTER FINISHING

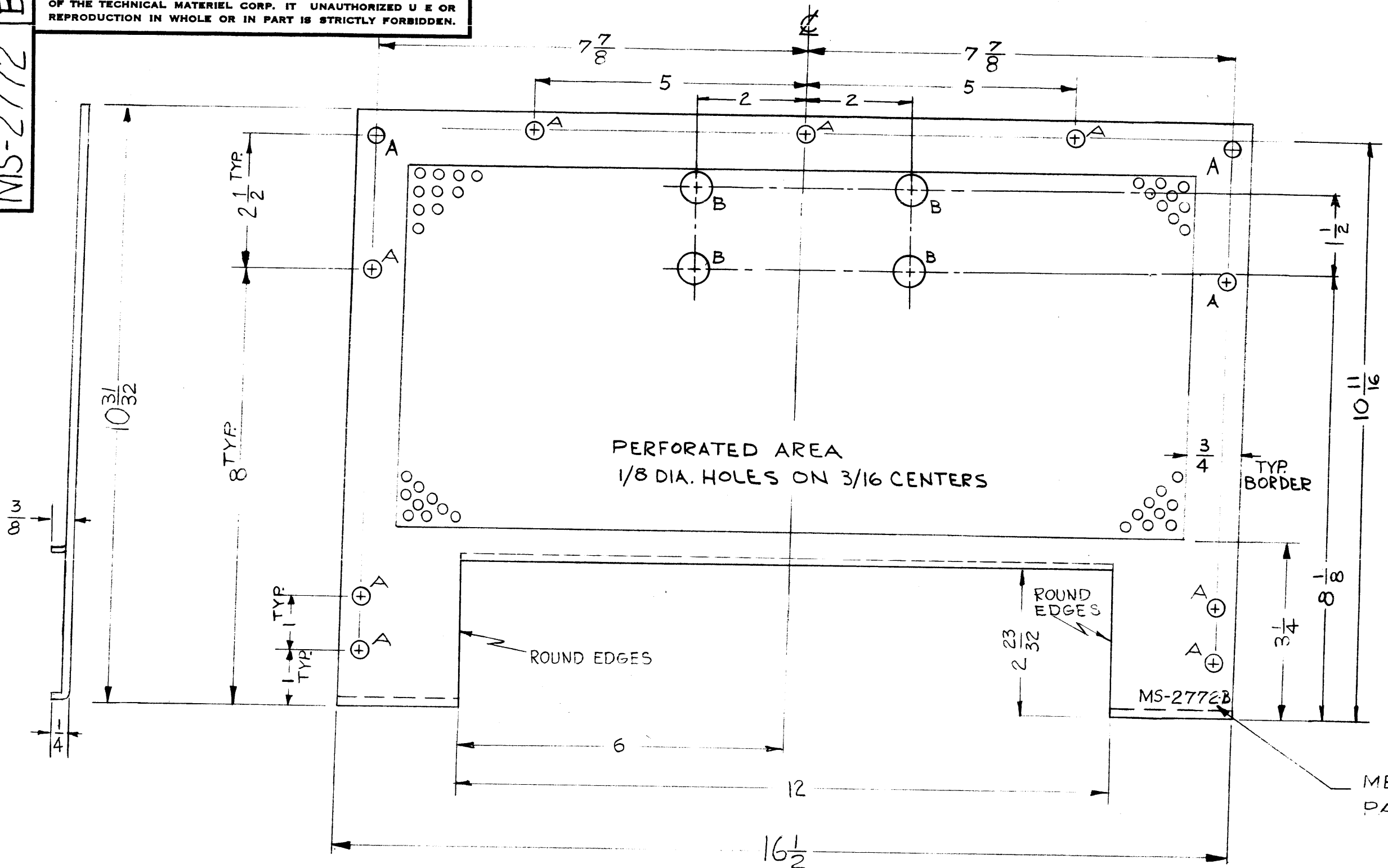
Property of:
THE TECHNICAL MATERIEL CORPORATION
MAMARONECK, NEW YORK

3	1	NT-129-832-4	NUT, ROUND, SWAGE TYPE	B
REQ.	ITEM	PART NO.	DESCRIPTION	SYMBOL
		.081	THE TECHNICAL MATERIEL CORP. MAMARONECK, NEW YORK	
		ALUMINUM	BRACKET, CABLE MTG.	
		5052-H32	C.A.	
		5404 YEL. IRIDITE	DRAWN	
			CHECKED	
			FINAL APPROVAL	
			ELEC. DES. APP.	
			MECH. DES. APP.	
			MS-2769	A

A	3/8 WAS 5/8; 1-3/16 WAS 1-3/8; 2-5/8 WAS 2-3/4	10-4-62	7285	ES		
SYM	DESCRIPTION	DATE	CH. NO.	DRAFTS	CHECKER	ENG. APP.
UNLESS OTHERWISE SPECIFIED:						
DIMENSIONS ARE IN INCHES						
TOLERANCES ON						
FRACTIONS ± 1/64 DECIMALS ± .005 ANGLES ± 1/2°						
SCALE: DO NOT SCALE						
MAXIMUM ALLOWABLE TOLERANCES HAVE BEEN DETERMINED AND ANY DEVIATIONS WILL BE CAUSE FOR REJECTION. REMOVE ALL BURRS AND SHARP EDGES						
	HFP-1					
REQ. PER UNIT	MODEL	SECTION	ASS'Y. NO.	DATE		
			A-2382-3	11-30-61		
USED ON						

MS-2772 B

THE CONTENTS OF THIS DRAWING ARE THE EXCLUSIVE PROPERTY OF THE TECHNICAL MATERIEL CORP. IT UNAUTHORIZED USE OR REPRODUCTION IN WHOLE OR IN PART IS STRICTLY FORBIDDEN.



LEGEND		
HOLE	DESCRIPTION	REQ
A	7/32 DIA.	11
B	9/16 DIA.	4

METAL STAMP TMC
PART NO. 1/8 HIGH GOTHIC

B	MS-1775 REF. DELETED	5-9-63	8912	<i>WJE</i>	<i>WJE</i>	<i>WJE</i>
A	4" B" HOLES ADDED	7-13-62	6915	<i>GE</i>	<i>GE</i>	<i>GE</i>

REQ.	ITEM	PART NO.	KOHN	DESCRIPTION	SYMBOL
		.064		THE TECHNICAL MATERIEL CORP. MAMARONECK, NEW YORK	
		ALUMINUM		COVER, TOP	
		5052-H32		FRONT SECTION	
		S404-YELLOW IRIDITE			
			C.A.	<i>WJE</i>	<i>BP</i>
			DRAWN	CHECKED	FINAL APPROVAL
			RK	RK	MS-2772 B
			ELEC. DES. APP.	MECH. DES. APP.	

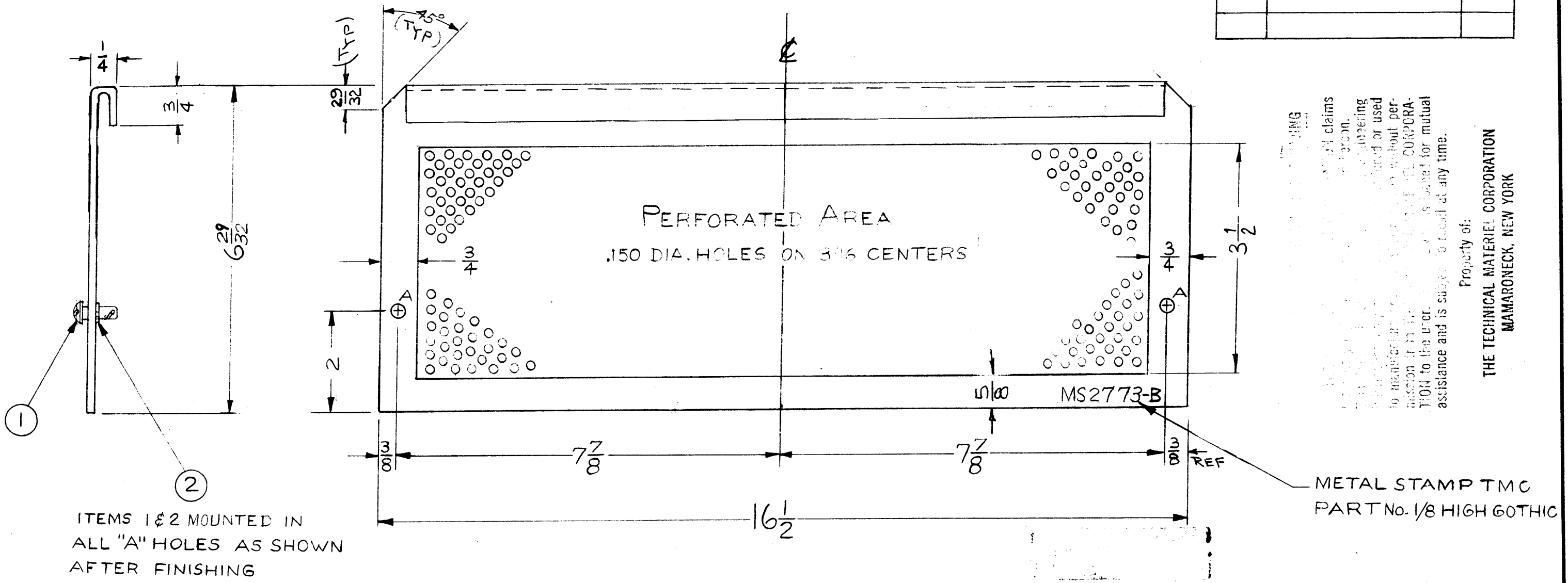
SYM	DESCRIPTION	DATE	CH. NO.	DRAFTS	CHECKER	ENG. APP.
	UNLESS OTHERWISE SPECIFIED:					
	DIMENSIONS ARE IN INCHES					
	TOLERANCES ON					
	FRACTIONS ± 1/64					
	DECIMALS ± .005					
	ANGLES ± 1/2°					
	SCALE: HALF (DO NOT SCALE).					
	MAXIMUM ALLOWABLE TOLERANCES HAVE BEEN DETERMINED AND ANY DEVIATIONS WILL BE CAUSE FOR REJECTION.					
	REMOVE ALL BURRS AND SHARP EDGES					

REQ. PER UNIT	1	MODEL	HFP-1	SECTION	A-2382-12	DATE	11-30-61
USED ON							

MS-2773 B

THE CONTENTS OF THIS DRAWING ARE THE EXCLUSIVE PROPERTY OF THE TECHNICAL MATERIEL CORP. ITS UNAUTHORIZED USE OR REPRODUCTION IN WHOLE OR IN PART IS STRICTLY FORBIDDEN.

LEGEND		
HOLE	DESCRIPTION	REQ.
A	.250 DIA.	2



PROPERTY OF THE TECHNICAL MATERIEL CORPORATION
 ALL RIGHTS RESERVED
 THIS DRAWING IS THE PROPERTY OF THE TECHNICAL MATERIEL CORPORATION AND IS LOANED TO THE USER FOR HIS OWN USE ONLY. IT IS NOT TO BE REPRODUCED OR COPIED IN ANY MANNER WITHOUT THE WRITTEN PERMISSION OF THE TECHNICAL MATERIEL CORPORATION. THE USER ASSUMES ALL LIABILITY FOR ANY DAMAGE TO PERSONS OR PROPERTY CAUSED BY THE USE OF THIS DRAWING OR THE PARTS MANUFACTURED THEREFROM.

Property of:
 THE TECHNICAL MATERIEL CORPORATION
 MAMARONECK, NEW YORK

ITEMS 1 & 2 MOUNTED IN ALL "A" HOLES AS SHOWN AFTER FINISHING

METAL STAMP TMC PART No. 1/8 HIGH GOTHIC

B	BLANK SIZE REF: MS-1775-22, DELETED	4-25-63	8912	942	SG		
A	LIP WAS 1/4	8-23-62	7102	SG			
SYM	DESCRIPTION	DATE	CH. NO.	DRAFTS	CHECKER	ENG. APP.	
UNLESS OTHERWISE SPECIFIED:		SCALE: HALF (DO NOT SCALE)					
DIMENSIONS ARE IN INCHES		MAXIMUM ALLOWABLE TOLERANCES HAVE BEEN DETERMINED AND ANY DEVIATIONS WILL BE CAUSE FOR REJECTION.					
TOLERANCES ON FRACTIONS ± 1/64		DECIMALS ± .005		ANGLES ± 1/2°		REMOVE ALL BURRS AND SHARP EDGES	

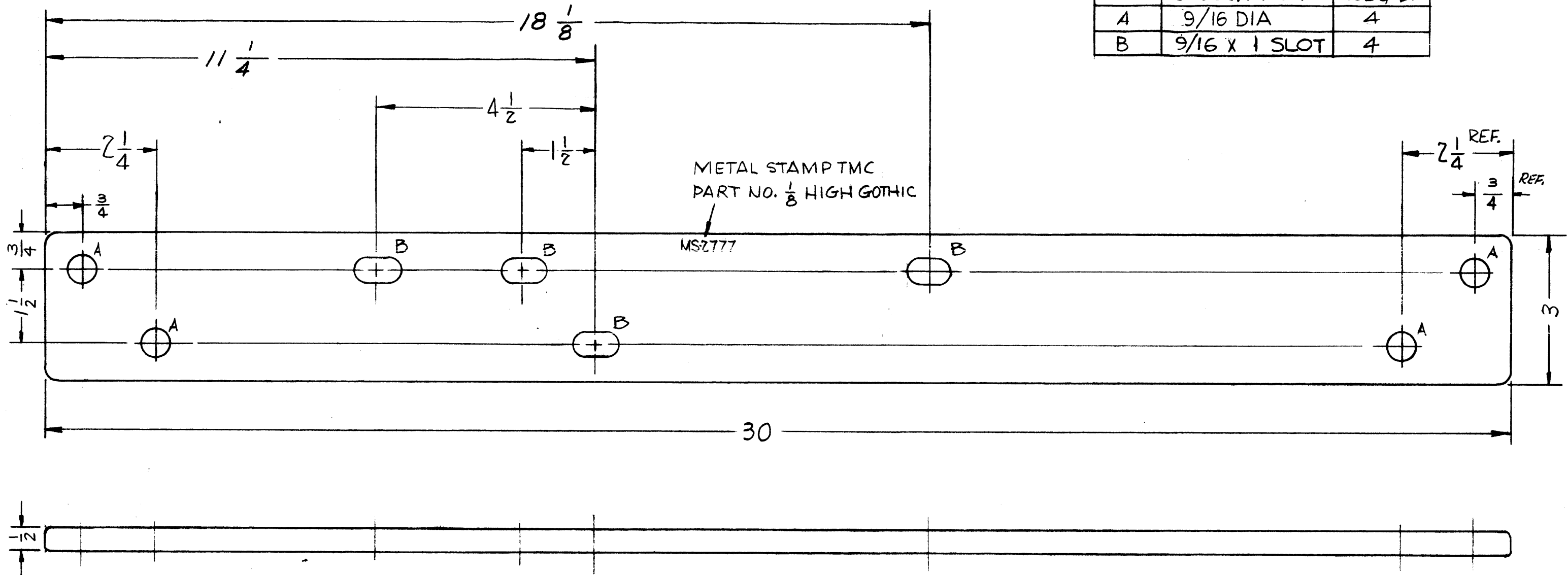
REQ. PER UNIT	MODEL	SECTION	ASSY. NO.	DATE
	HFP-1		A-2382-12	11-29-61
USED ON				

2	2	FS-109-3	RING, STUD	
2	1	FS-110-7	STUD, SLOTTED	
REQ.	ITEM	PART NO.	DESCRIPTION	SYMBOL
.064			THE TECHNICAL MATERIEL CORP.	
STOCK SIZE			MAMARONECK, NEW YORK	
PERFORATED ALUMINUM			COVER, TOP	
MATERIAL			REAR SECTION	
5052-H32		C-A	AD	BP
TYPE & TEMPER		HEAT TREAT. SPEC.	DRAWN	CHECKED
S404 YELLOW IRIDITE			RK	RK
FINISH & SPEC. NO.		ELEC. DES. APP.	MECH. DES. APP.	
				MS-2773 B

THE CONTENTS OF THIS DRAWING ARE THE EXCLUSIVE PROPERTY OF THE TECHNICAL MATERIEL CORP. ITS UNAUTHORIZED USE OR REPRODUCTION IN WHOLE OR IN PART IS STRICTLY FORBIDDEN.

MS-2777

HOLE LEGEND		
SYM.	DESCRIPTION	REQ'D.
A	9/16 DIA	4
B	9/16 X 1 SLOT	4



NOTE:
1- ROUND ALL CORNERS.

FINISH:
1- S404 YELLOW IRIDITE,
2- TWO COATS GREY EPOXY SPRAY,
BAKE AFTER EACH COAT.

Property of
THE TECHNICAL MATERIEL CORPORATION
MAMARONECK, NEW YORK

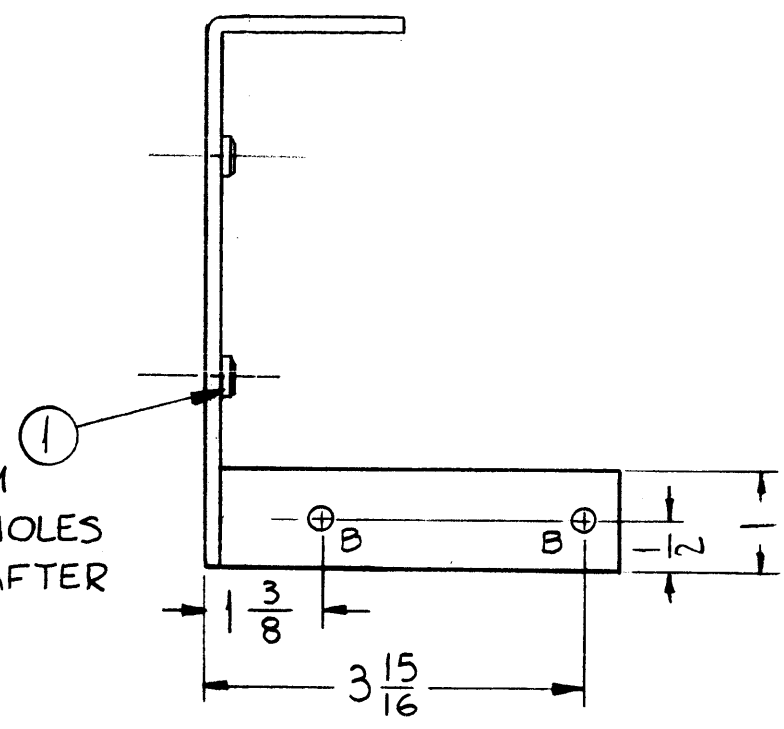
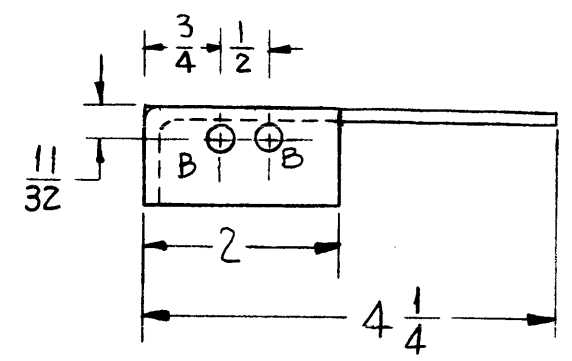
REQ.	ITEM	PART NO.	DESCRIPTION	SYMBOL
	1/2" THICK		THE TECHNICAL MATERIEL CORP. MAMARONECK, NEW YORK	
	STOCK SIZE			
	ALUMINUM		SUPPORT, CRADLE, BASE	
	MATERIAL			
	2024-T4		as	RUZZO
	TYPE & TEMPER	HEAT TREAT. SPEC.	DRAWN	CHECKED
	SEE NOTE		FB	MS-2777
	FINISH & SPEC. NO.		ELEC. DES. APP.	MECH. DES. APP.

SYM	DESCRIPTION	DATE	CH. NO.	DRAFTS	CHECKER	ENG. APP.
	UNLESS OTHERWISE SPECIFIED: DIMENSIONS ARE IN INCHES TOLERANCES ON FRACTIONS ± 1/64 DECIMALS ± .005 ANGLES ± 1/20					
A	SCALE: DO NOT SCALE MAXIMUM ALLOWABLE TOLERANCES HAVE BEEN DETERMINED AND ANY DEVIATIONS WILL BE CAUSE FOR REJECTION. REMOVE ALL BURRS AND SHARP EDGES					

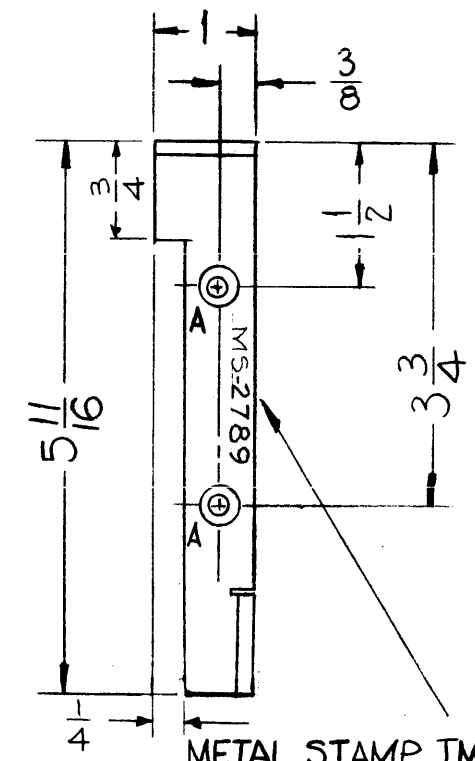
REQ. PER UNIT	MODEL	SECTION	ASS'Y. NO.	DATE
2	TRC-20K			11-28-61
USED ON				

MS-2789 A

THE CONTENTS OF THIS DRAWING ARE THE EXCLUSIVE PROPERTY OF THE TECHNICAL MATERIEL CORP. ITS UNAUTHORIZED USE OR REPRODUCTION IN WHOLE OR IN PART IS STRICTLY FORBIDDEN.



MOUNT ITEM 1" IN ALL A HOLES AS SHOWN AFTER FINISH



METAL STAMP TMC PART NO 1/8 HIGH GOTHIC.

LEGEND		
HOLE	DESCRIPTION	REQ.
A	.250-253	2
B	7/32 DIA.	4

PROPERTY OF THE TECHNICAL MATERIEL CORPORATION
 THE TECHNICAL MATERIEL CORPORATION claims
 copyright in the design and drawings hereon.
 No part of this drawing may be reproduced or used
 for any purpose other than for engineering
 or manufacturing purposes shown hereon without per-
 mission from THE TECHNICAL MATERIEL CORPORA-
 TION to the user. This drawing is loaned for mutual
 assistance and is subject to recall at any time.

Property of:
 THE TECHNICAL MATERIEL CORPORATION
 MAMARONECK, NEW YORK

— NOTE —
 USE MATERIAL THICKNESS FOR MAX RADIUS
 ON ALL BENDS UNLESS OTHERWISE SPECIFIED

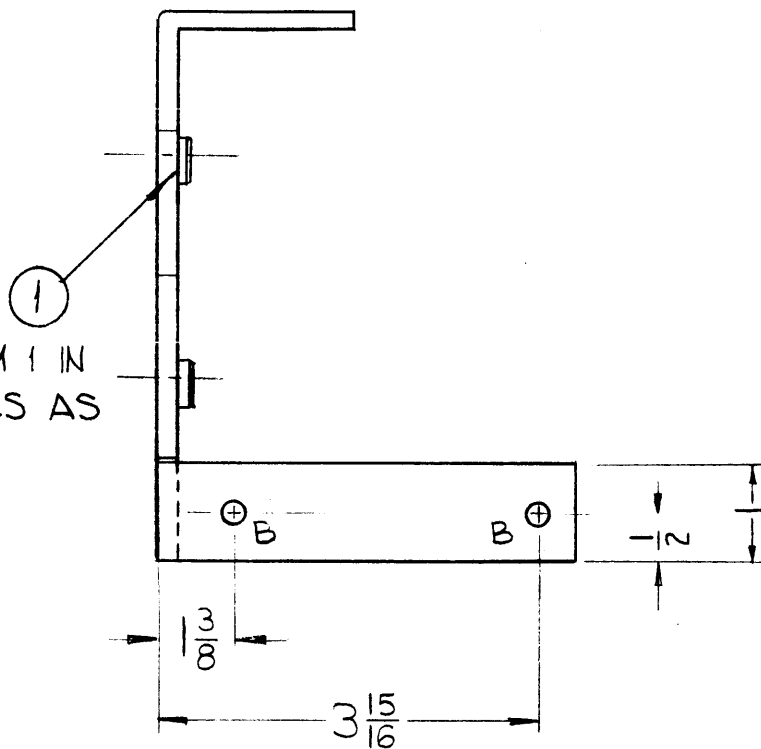
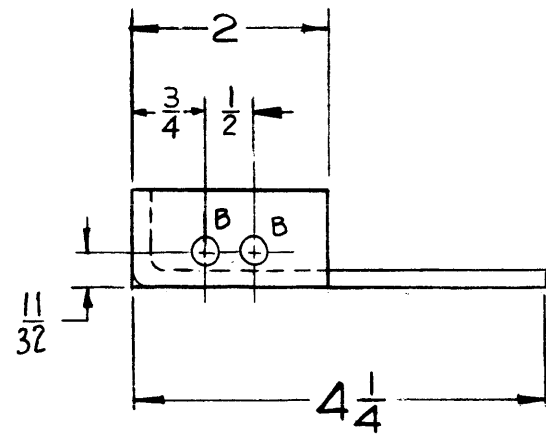
MOUNT INSERTS AFTER FINISHING

A	ADDED CUTOUT	1/30/69	10820	TR	TR	
SYM	DESCRIPTION	DATE	CH. NO.	DRAFTS	CHECKER	ENG. APP.
UNLESS OTHERWISE SPECIFIED: DIMENSIONS ARE IN INCHES TOLERANCES ON FRACTIONS ± 1/64 DECIMALS ± .005 ANGLES ± 1/2°		SCALE: DO NOT SCALE MAXIMUM ALLOWABLE TOLERANCES HAVE BEEN DETERMINED AND ANY DEVIATIONS WILL BE CAUSE FOR REJECTION. REMOVE ALL BURRS AND SHARP EDGES				
REQ. PER UNIT	MODEL	SECTION	ASS'Y. NO.	DATE	USED ON	
	SBT-1KS			12-6-61		

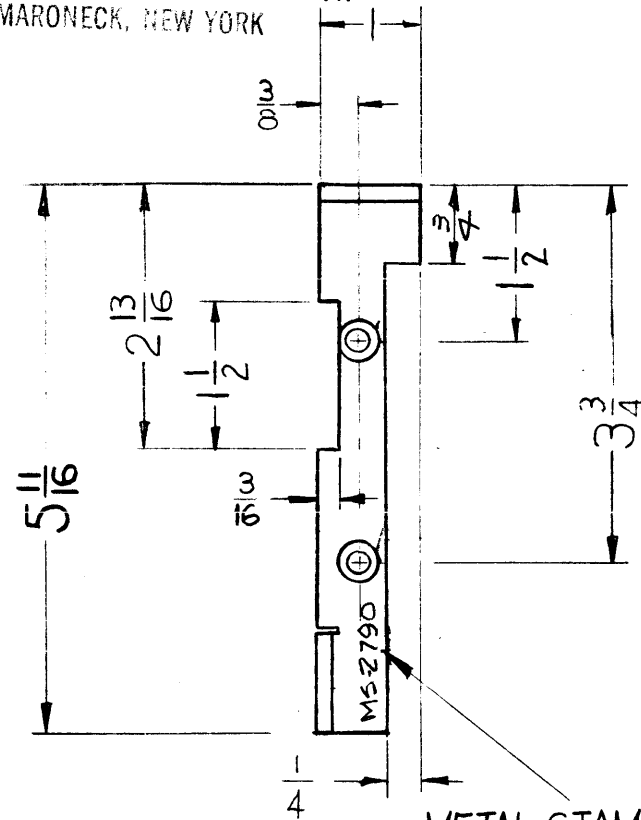
2	1	NT-129-1032-4	NUT, ROUND SWAGE TYPE	A
REQ.	ITEM	PART NO.	DESCRIPTION	SYMBOL
		.125	THE TECHNICAL MATERIEL CORP. MAMARONECK, NEW YORK	
		ALUMINUM	BRACKET, SBE POWER SUPPLY LEFT SIDE	
		5052-H32	C.A. RUZZO	SFM
		5404 YELLOW IRIDITE	RK	FINAL APPROVAL
			MS-2789	A

MS-2790 A

THE CONTENTS OF THIS DRAWING ARE THE EXCLUSIVE PROPERTY OF THE TECHNICAL MATERIEL CORP. ITS UNAUTHORIZED USE OR REPRODUCTION IN WHOLE OR IN PART IS STRICTLY FORBIDDEN.



Property of:
THE TECHNICAL MATERIEL CORPORATION
MAMARONECK, NEW YORK



METAL STAMP TMC
PART NO. 1/8 HIGH
GOTHIC

LEGEND		
HOLE	DESCRIPTION	REQ'D.
A	.253-.250	2
B	7/32 DIA.	4

NOTE-

USE MATERIAL THICKNESS FOR MAX. RADIUS ON ALL BENDS UNLESS OTHERWISE SPECIFIED

MOUNT INSERTS AFTER FINISHING

A	CUTOUT ADDED	1/30/61	10820	TR.	JWB	
SYM	DESCRIPTION	DATE	CH. NO.	DRAFTS	CHECKER	ENG. APP.
UNLESS OTHERWISE SPECIFIED:		SCALE: DO NOT SCALE				
DIMENSIONS ARE IN INCHES		MAXIMUM ALLOWABLE TOLERANCES HAVE BEEN DETERMINED AND ANY DEVIATIONS WILL BE CAUSE FOR REJECTION.				
TOLERANCES ON FRACTIONS ± 1/64 DECIMALS ± .005 ANGLES ± 1/2°		REMOVE ALL BURRS AND HARP EDGES				

REQ. PER UNIT	MODEL	SECTION	ASS'Y. NO.	DATE
	SBT-1KS			12-18-61
USED ON				

2	1	NT-129-1032-4	NUT, ROUND, SWAGE TYPE	A		
REQ.	ITEM	PART NO.	DESCRIPTION	SYMBOL		
		.125 STOCK SIZE	THE TECHNICAL MATERIEL CORP. MAMARONECK, NEW YORK			
		ALUMINUM	BRACKET, SBE POWER SUPPLY MTG. RIGHT SIDE			
		5052-H32	G. G. RUZZO	JFM		
		TYPE & TEMPER	HEAT TREAT. SPEC.	DRAWN	CHECKED	FINAL APPROVAL
		S404 YELLOW IRIDITE	RK			MS-2790 A
		FINISH & SPEC. NO.	ELEC. DES. APP.	MECH. DES. APP.		