

THE CONTENTS OF THIS DRAWING ARE THE EXCLUSIVE PROPERTY OF THE TECHNICAL MATERIEL CORP. ITS UNAUTHORIZED USE OR REPRODUCTION IN WHOLE OR IN PART IS STRICTLY FORBIDDEN.

REQ. PER UNIT

2

MODEL

KIT-113

USED ON

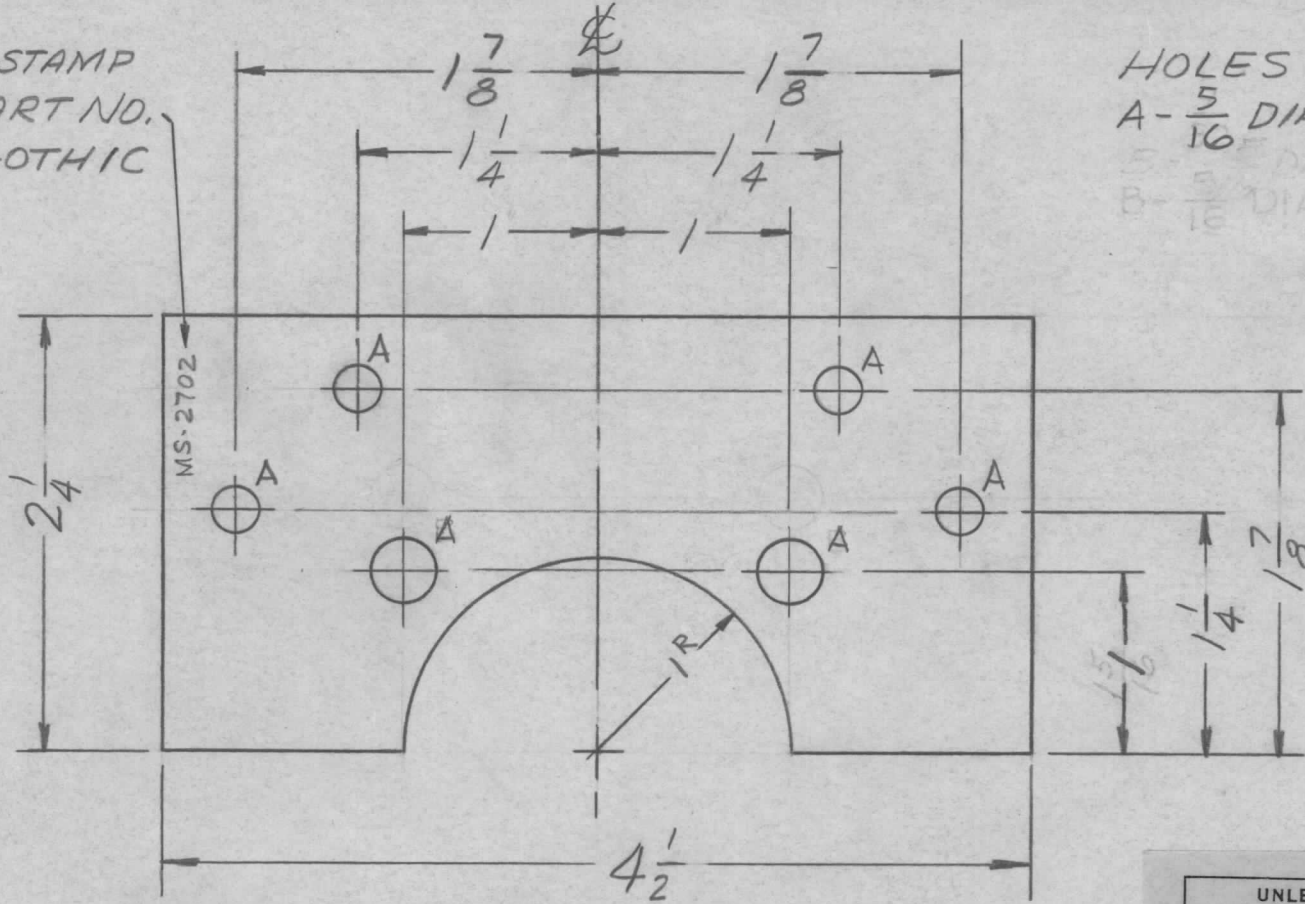
ASS'Y. NO.

DATE

10-20-61

MS-2702

METAL STAMP  
TMC PART NO.  
1/8" HIGH GOTHIC



HOLES ~  
A - 5/16 DIA. 6 REQ'D.  
B - 5/16 DIA. 2 REQ'D.  
C - 5/16 DIA. 2 REQ'D.

UNLESS OTHERWISE SPECIFIED  
DIMENSIONS ARE IN INCHES AND INCLUDE  
CHEMICALLY APPLIED OR PLATED FINISHES

DECIMALS	TOLERANCES	FRACTIONS
.X ± .05		± 1/64
.XX ± .01		ANGLES
.XXX ± .005		± 0° 30'

CUT HERE  
GUARANTEED  
2-66

SYM	DESCRIPTION	DATE	CH. NO.	DRAFTS	CHECKER	ENG. APP.	REQ.	ITEM	PART NO.	DESCRIPTION	SYMBOL	
									1/8 THICK	THE TECHNICAL MATERIEL CORP. MAMARONECK, NEW YORK PLATE, MTG, COUPLER		
									STOCK SIZE			
									ALUMINUM			
									MATERIAL			
								5052-H32		AB	RUZZO	JDM
								5404-YEL. IRIDITE		AB	AA	MS-2702
									FINISH & SPEC. NO.	ELEC. DES. APP.	MECH. DES. APP.	

UNLESS OTHERWISE SPECIFIED:  
DIMENSIONS ARE IN INCHES  
TOLERANCES ON  
FRAC. ± 1/64 DEC. ± .005 ANGLES ± 1/2°

SCALE:  
MAXIMUM ALLOWABLE TOLERANCES HAVE BEEN DETERMINED AND ANY DEVIATIONS WILL BE CAUSE FOR REJECTION.  
REMOVE ALL BURRS AND SHARP EDGES

THE CONTENTS OF THIS DRAWING ARE THE EXCLUSIVE PROPERTY OF THE TECHNICAL MATERIEL CORP. ITS UNAUTHORIZED USE OR REPRODUCTION IN WHOLE OR IN PART IS STRICTLY FORBIDDEN.

REQ. PER UNIT

1

TRC-20K

USED ON

MODEL

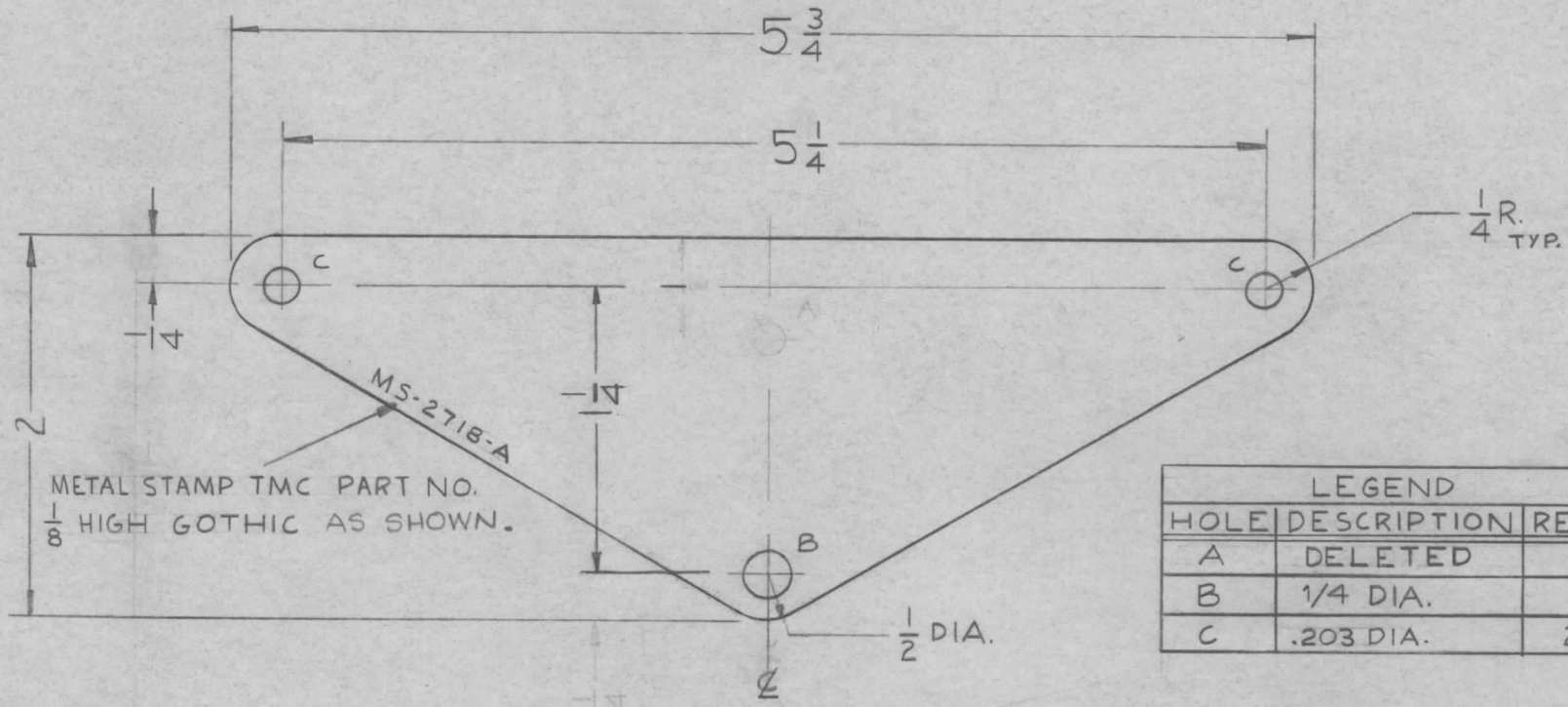
ASS'Y. NO.

DATE

10-19-61

MS-2718

A



LEGEND		
HOLE	DESCRIPTION	REQ'D.
A	DELETED	
B	1/4 DIA.	1
C	.203 DIA.	2

UNLESS OTHERWISE SPECIFIED DIMENSIONS ARE IN INCHES AND INCLUDE CHEMICALLY APPLIED OR PLATED FINISHES

DECIMALS	FRACTIONS
.X ± .05	± 1/64
.XX ± .01	ANGLES
.XXX ± .005	± 0° 30'

TOLERANCES

CUT HERE  
GUARANTEED  
2-66

REQ.	ITEM	PART NO.	DESCRIPTION				SYMBOL
		.064	THE TECHNICAL MATERIEL CORP.				
		STOCK SIZE	MAMARONECK, NEW YORK				
A		BRASS	PLATE, SPARK GAP				
		MATERIAL					
		TYPE & TEMPER	HEAT TREAT. SPEC.	DRAWN	CHECKED	FINAL APPROVAL	
		FINISH & SPEC. NO.	ELEC. DES. APP.	MECH. DES. APP.			

SYM	DESCRIPTION	DATE	CH. NO.	DRAFTS	CHECKER	ENG. APP.
A	(C) Holes Were .191 Dia. 1-1/4 Dim. Added (A) Hole .166 Dia. Deleted	12-11-61	6028	E.E.	<i>[Signature]</i>	<i>[Signature]</i>

UNLESS OTHERWISE SPECIFIED:  
DIMENSIONS ARE IN INCHES  
TOLERANCES ON  
FRAC. ± 1/64 DEC. ± .005 ANGLES ± 1/2°

SCALE:  
MAXIMUM ALLOWABLE TOLERANCES HAVE BEEN DETERMINED AND ANY DEVIATIONS WILL BE CAUSE FOR REJECTION.  
REMOVE ALL BURRS AND SHARP EDGES

THE CONTENTS OF THIS DRAWING ARE THE EXCLUSIVE PROPERTY OF THE TECHNICAL MATERIEL CORP. ITS UNAUTHORIZED USE OR REPRODUCTION IN WHOLE OR IN PART IS STRICTLY FORBIDDEN.

REQ. PER UNIT

2

MODEL

TRC-20K

USED ON

ASS'Y. NO.

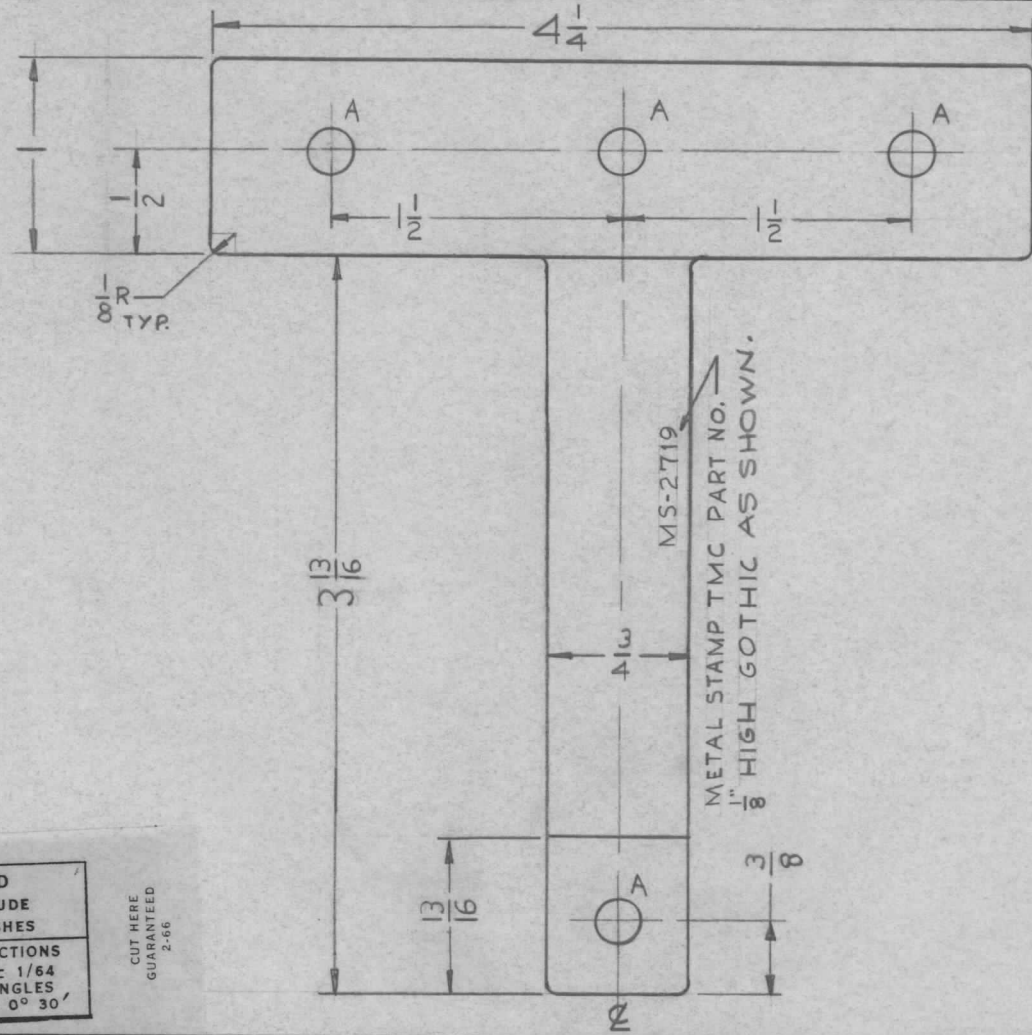
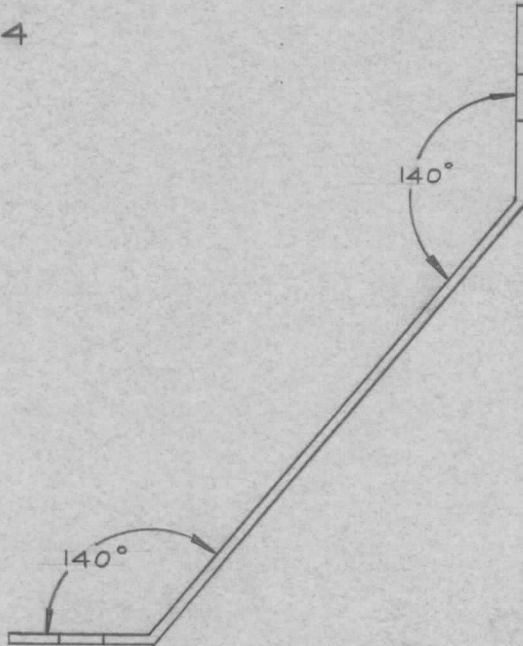
DATE

10-18-61

MS-2719

HOLES REQ'D.

A -  $\frac{17}{64}$  DIA. 4



UNLESS OTHERWISE SPECIFIED DIMENSIONS ARE IN INCHES AND INCLUDE CHEMICALLY APPLIED OR PLATED FINISHES

DECIMALS	FRACTIONS
.X ± .05	± 1/64
.XX ± .01	ANGLES
.XXX ± .005	± 0° 30'

TOLERANCES

CUT HERE GUARANTEED 2-66

MS-2719  
METAL STAMP TMC PART NO. 1/8" HIGH GOTHIC AS SHOWN.

SYM	DESCRIPTION	DATE	CH. NO.	DRAFTS	CHECKER	ENG. APP.	REQ. ITEM	PART NO.	DESCRIPTION	SYMBOL	
							.020		THE TECHNICAL MATERIEL CORP. MAMARONECK, NEW YORK	STRAP, GROUND 50Ω	
							STOCK SIZE				
							SOFT COPPER				
								MATERIAL			
									LG	DA Man	
UNLESS OTHERWISE SPECIFIED: DIMENSIONS ARE IN INCHES TOLERANCES ON		SCALE:		TYPE & TEMPER		HEAT TREAT. SPEC.		DRAWN		CHECKED	
FRAC. ± 1/64 DEC. ± .005 ANGLES ± 1/2°		MAXIMUM ALLOWABLE TOLERANCES HAVE BEEN DETERMINED AND ANY DEVIATIONS WILL BE CAUSE FOR REJECTION. REMOVE ALL BURRS AND SHARP EDGES		SILVER PLATED 5-245				LB		MS-2719	
				FINISH & SPEC. NO.		ELEC. DES. APP.		MECH. DES. APP.			

THE CONTENTS OF THIS DRAWING ARE THE EXCLUSIVE PROPERTY OF THE TECHNICAL MATERIEL CORP. ITS UNAUTHORIZED USE OR REPRODUCTION IN WHOLE OR IN PART IS STRICTLY FORBIDDEN.

REQ. PER UNIT

MODEL  
SBS-1

USED ON

ASS'Y. NO.

DATE

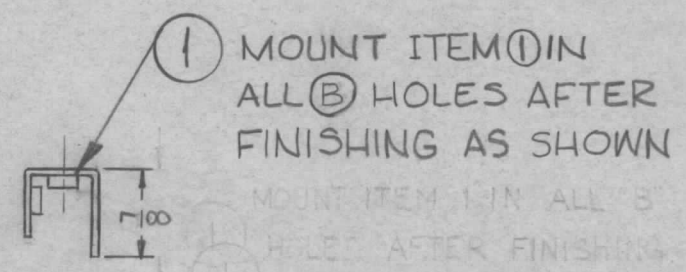
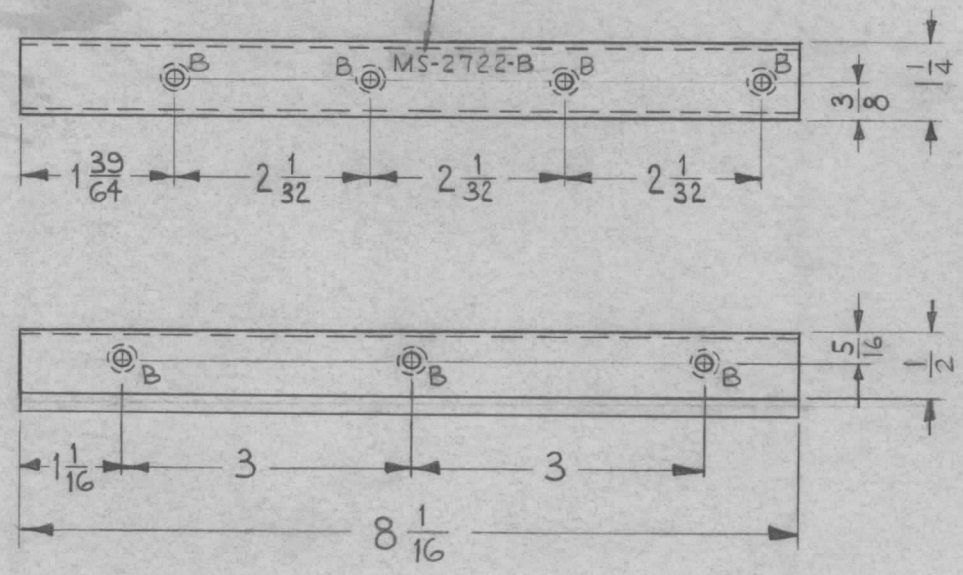
10-23-61

MS-2722

B

METAL STAMP TMC PART NO. AS SHOWN  $\frac{1}{8}$  HIGH GOTHIC.

B $\approx$ .191-.194 DIA. 7 REQ.



USE MATERIAL THICKNESS FOR MAX. RADIUS ON ALL BENDS UNLESS OTHERWISE SPECIFIED

MOUNT INSERTS AFTER FINISHING

UNLESS OTHERWISE SPECIFIED DIMENSIONS ARE IN INCHES AND INCLUDE CHEMICALLY APPLIED OR PLATED FINISHES	
DECIMALS .X $\pm$ .05 .XX $\pm$ .01 .XXX $\pm$ .005	FRACTIONS $\pm$ 1/64 ANGLES $\pm$ 0° 30'
TOLERANCES	

CUT HERE GUARANTEED 2-66

7	1	NT-129-632-4	NUT, ROUND, SWAGE TYPE	B									
REQ. ITEM		PART NO.		SYMBOL									
		.064		THE TECHNICAL MATERIEL CORP. MAMARONECK, NEW YORK									
		STOCK SIZE											
		ALUMINUM											
		MATERIAL		BRACKET, MOUNTING, IF STRIP									
SYM		DESCRIPTION	DATE	CH. NO.	DRAFTS	CHECKER	ENG. APP.	5052-H32	TYPE & TEMPER	HEAT TREAT. SPEC.	DRAWN	CHECKED	FINAL APPROVAL
B	3 B HOLES WERE $\frac{5}{32}$ DIA. A HOLES ON BOTTOM VIEW	1-15-62	6184	GG									
A	$\frac{7}{8}$ Lip Added $\frac{5}{16}$ Dim. Was $\frac{5}{32}$ , $\frac{1}{4}$ Dim. Was $\frac{3}{4}$	1-15-61	5890	G.A.									
UNLESS OTHERWISE SPECIFIED: DIMENSIONS ARE IN INCHES. TOLERANCES ON FRAC. $\pm$ 1/64 DEC. $\pm$ .005 ANGLES $\pm$ 1/2°		SCALE: 2:1 (DO NOT SCALE).		MAXIMUM ALLOWABLE TOLERANCES HAVE BEEN DETERMINED AND ANY DEVIATIONS WILL BE CAUSE FOR REJECTION. REMOVE ALL BURRS AND SHARP EDGES									
				S404 YELL. IRIDITE		FINISH & SPEC. NO.		ELEC. DES. APP.		MECH. DES. APP.		MS-2722 B	

THE CONTENTS OF THIS DRAWING ARE THE EXCLUSIVE PROPERTY OF THE TECHNICAL MATERIEL CORP. ITS UNAUTHORIZED USE OR REPRODUCTION IN WHOLE OR IN PART IS STRICTLY FORBIDDEN.

REQ. PER UNIT

1

USED ON

MODEL

SBS-1

ASS'Y. NO.

DATE

10-23-61

MS-2723

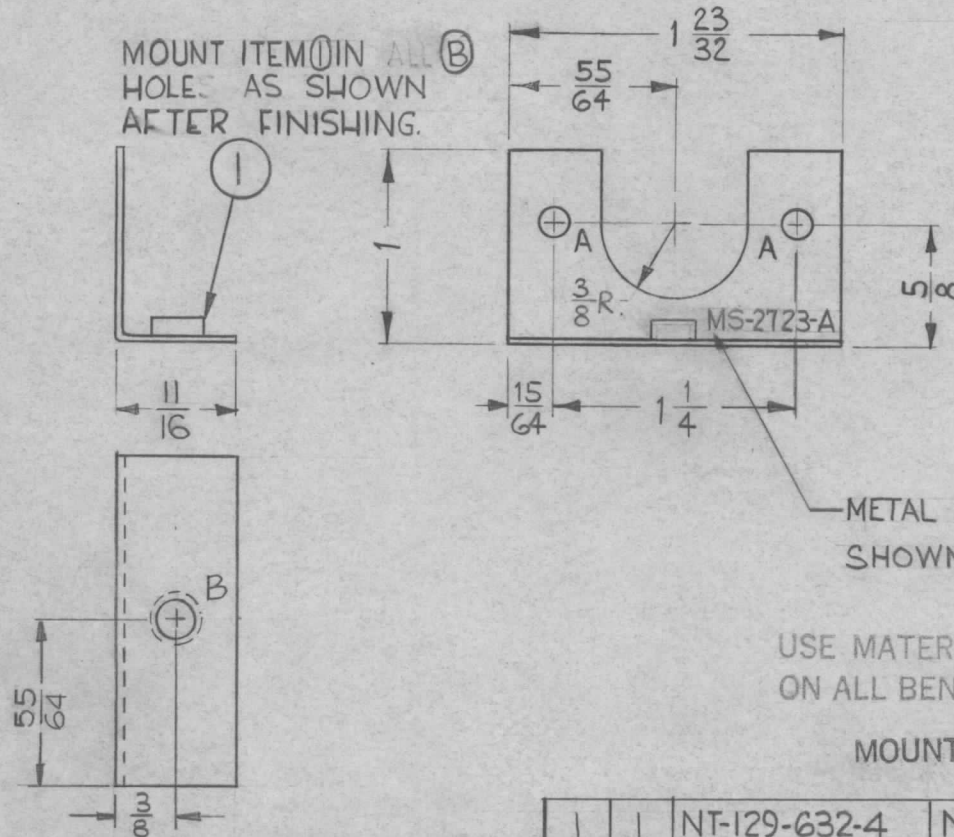


USE MATERIAL THICKNESS FOR MAX. RADIUS ON ALL BENDS UNLESS OTHERWISE SPECIFIED

A -  $\frac{5}{32}$  DIA. 2 REQ.

B - .191-.194 DIA. 1 REQ.

MOUNT ITEM (1) IN ALL HOLES AS SHOWN AFTER FINISHING.



UNLESS OTHERWISE SPECIFIED DIMENSIONS ARE IN INCHES AND INCLUDE CHEMICALLY APPLIED OR PLATED FINISHES

DECIMALS	FRACTIONS
.X ± .05	± 1/64
.XX ± .01	ANGLES
.XXX ± .005	± 0° 30'

TOLERANCES

CUT HERE GUARANTEED 2-66

METAL STAMP TMC PART NO. AS SHOWN  $\frac{1}{8}$  HIGH GOTHIC.

USE MATERIAL THICKNESS FOR MAX. RADIUS ON ALL BENDS UNLESS OTHERWISE SPECIFIED

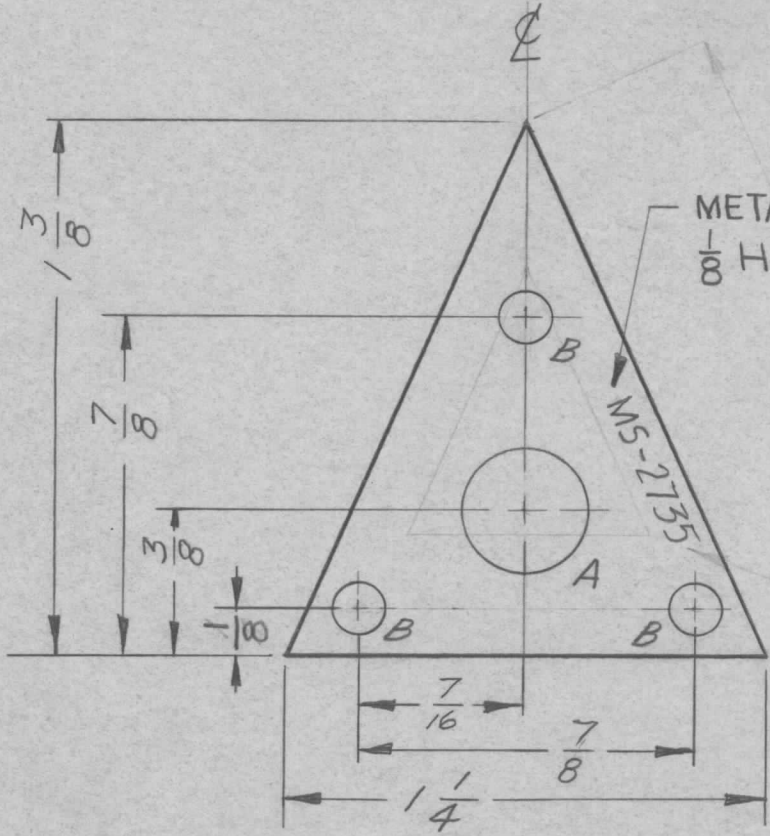
MOUNT INSERTS AFTER FINISHING

1	1	NT-129-632-4	NUT, ROUND, SWAGE TYPE		B
REQ.	ITEM	PART NO.	DESCRIPTION		SYMBOL
		.064	THE TECHNICAL MATERIEL CORP.		
		STOCK SIZE	MAMARONECK, NEW YORK		
A	11/16 Dim. Was 5/8	12-14-61 6048 E.A.	BRACKET, MOUNTING CABLE		
SYM	DESCRIPTION	DATE	CH. NO.	DRAFTS	CHECKER
UNLESS OTHERWISE SPECIFIED:		SCALE: FULL (DO NOT SCALE).			
DIMENSIONS ARE IN INCHES.		5052-H32			
TOLERANCES ON		TYPE & TEMPER		HEAT TREAT. SPEC.	DRAWN
FRAC. ± 1/64 DEC. ± .005 ANGLES ± 1/2°		S404 YELL IRIDITE			CHECKED
		FINISH & SPEC. NO.		ELEC. DES. APP.	MECH. DES. APP.
					FINAL APPROVAL
					MS-2723
					△

THE CONTENTS OF THIS DRAWING ARE THE EXCLUSIVE PROPERTY OF THE TECHNICAL MATERIEL CORP. ITS UNAUTHORIZED USE OR REPRODUCTION IN WHOLE OR IN PART IS STRICTLY FORBIDDEN.

REQ. PER UNIT	USED ON		
	MODEL	ASS'Y. NO.	DATE
1	AFC-2		11-2-61
1	HNF-1		3-16-62
1	AFC-2A		4-12-62
1	AFC-3		4-12-62

MS-2735 A



HOLES:

A- 5/16 DIA. 1 REQ.  
B- 1/8 DIA. 3 REQ.

METAL STAMP TMC PART NO.  
1/8 HIGH GOTHIC AS SHOWN

FINISH NOTE:  
S404-YELLOW IRIDITE  
S114-ZINC CHROMATE  
#37875 LUSTERLESS WHITE  
ENAMEL, PER. FED. STD# 595

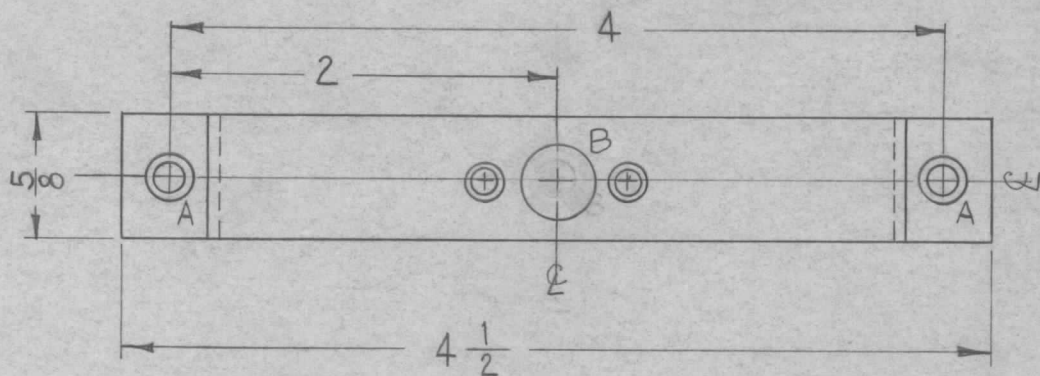
UNLESS OTHERWISE SPECIFIED DIMENSIONS ARE IN INCHES AND INCLUDE CHEMICALLY APPLIED OR PLATED FINISHES	
DECIMALS	FRACTIONS
.X ± .05	± 1/64
.XX ± .01	ANGLES
.XXX ± .005	± 0° 30'

CUT HERE  
GUARANTEED  
2-66

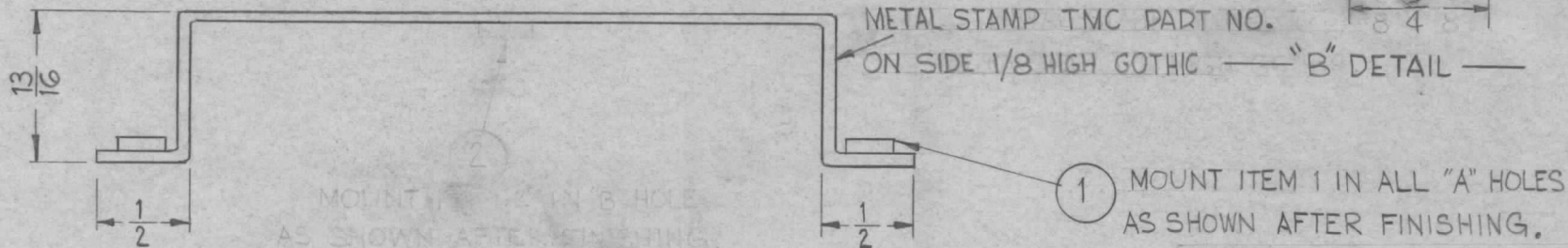
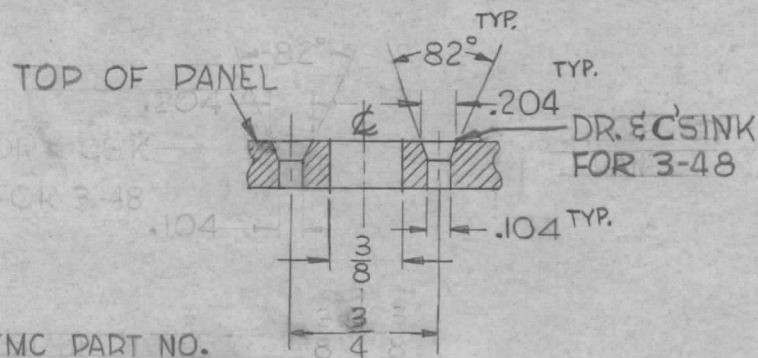
REQ.	ITEM	PART NO.	DESCRIPTION			SYMBOL
		.051	THE TECHNICAL MATERIEL CORP.			
		STOCK SIZE	MAMARONECK, NEW YORK			
A		ALUMINUM	INDICATOR, TUNING			
		MATERIAL				
SYM	DESCRIPTION	DATE	CH. NO.	DRAFTS	CHECKER	ENG. APP.
	UNLESS OTHERWISE SPECIFIED: DIMENSIONS ARE IN INCHES TOLERANCES ON FRAC. ± 1/64 DEC. ± .005 ANGLES ± 1/2°	SCALE: DO NOT SCALE				
		MAXIMUM ALLOWABLE TOLERANCES HAVE BEEN DETERMINED AND ANY DEVIATIONS WILL BE CAUSE FOR REJECTION. REMOVE ALL BURRS AND SHARP EDGES				
		5052-H32			WR	RJZZO
		TYPE & TEMPER	HEAT TREAT. SPEC.	DRAWN	CHECKED	FINAL APPROVAL
		SEE FINISH NOTE				
		FINISH & SPEC. NO.	ELEC. DES. APP.	MECH. DES. APP.		
					MS-2735	A

THE CONTENTS OF THIS DRAWING ARE THE EXCLUSIVE PROPERTY OF THE TECHNICAL MATERIEL CORP. ITS UNAUTHORIZED USE OR REPRODUCTION IN WHOLE OR IN PART IS STRICTLY FORBIDDEN.

REQ. PER UNIT	USED ON			MS-2737	B
	MODEL	ASS'Y. NO.	DATE		
1	AFC-2, AFC-2A		1-6-61		
1	AFC-3		4-12-62		



LEGEND		
HOLE	DESCRIPTION	REQ.
A	.161-.164 DIA.	2
B	SEE DETAIL	1



UNLESS OTHERWISE SPECIFIED DIMENSIONS ARE IN INCHES AND INCLUDE CHEMICALLY APPLIED OR PLATED FINISHES		
DECIMALS	TOLERANCES	FRACTIONS
.X ± .05		± 1/64
.XX ± .01		ANGLES ± 0° 30'
.XXX ± .005		

2	1	NT-129-440-4	NUT, ROUND, SWAGE TYPE	A
---	---	--------------	------------------------	---

SYM	DESCRIPTION	DATE	CH. NO.	DRAFTS	CHECKER	ENG. APP.	REQ. ITEM	PART NO.	DESCRIPTION	SYMBOL	
B	DELETED ITEM 2 FS-102	6-27-62	6821	R.T.	<i>[Signature]</i>	<i>[Signature]</i>		.064	THE TECHNICAL MATERIEL CORP. MAMARONECK, NEW YORK	BRACKET, BOTTOM SUPPORT	
A	B) Was .191-.194 Dia. Item 2) Was NT-129-632-4	1-31-62	6281	LL	<i>[Signature]</i>	<i>[Signature]</i>		ALUMINUM			
								5052-H32			
								S404 YEL. IRIDITE			
UNLESS OTHERWISE SPECIFIED: DIMENSIONS ARE IN INCHES. TOLERANCES ON FRAC. ± 1/64 DEC. ± .005 ANGLES ± 1/2°							SCALE: DO NOT SCALE				
MAXIMUM ALLOWABLE TOLERANCES HAVE BEEN DETERMINED AND ANY DEVIATIONS WILL BE CAUSE FOR REJECTION. REMOVE ALL BURRS AND SHARP EDGES											
									W.A.F.	<i>[Signature]</i>	<i>[Signature]</i>
									DRAWN	CHECKED	FINAL APPROVAL
											MS-2737 B
									ELEC. DES. APP.	MECH. DES. APP.	

THE CONTENTS OF THIS DRAWING ARE THE EXCLUSIVE PROPERTY OF THE TECHNICAL MATERIEL CORP. ITS UNAUTHORIZED USE OR REPRODUCTION IN WHOLE OR IN PART IS STRICTLY FORBIDDEN.

REQ. PER UNIT

USED ON

MODEL

ASS'Y. NO.

DATE

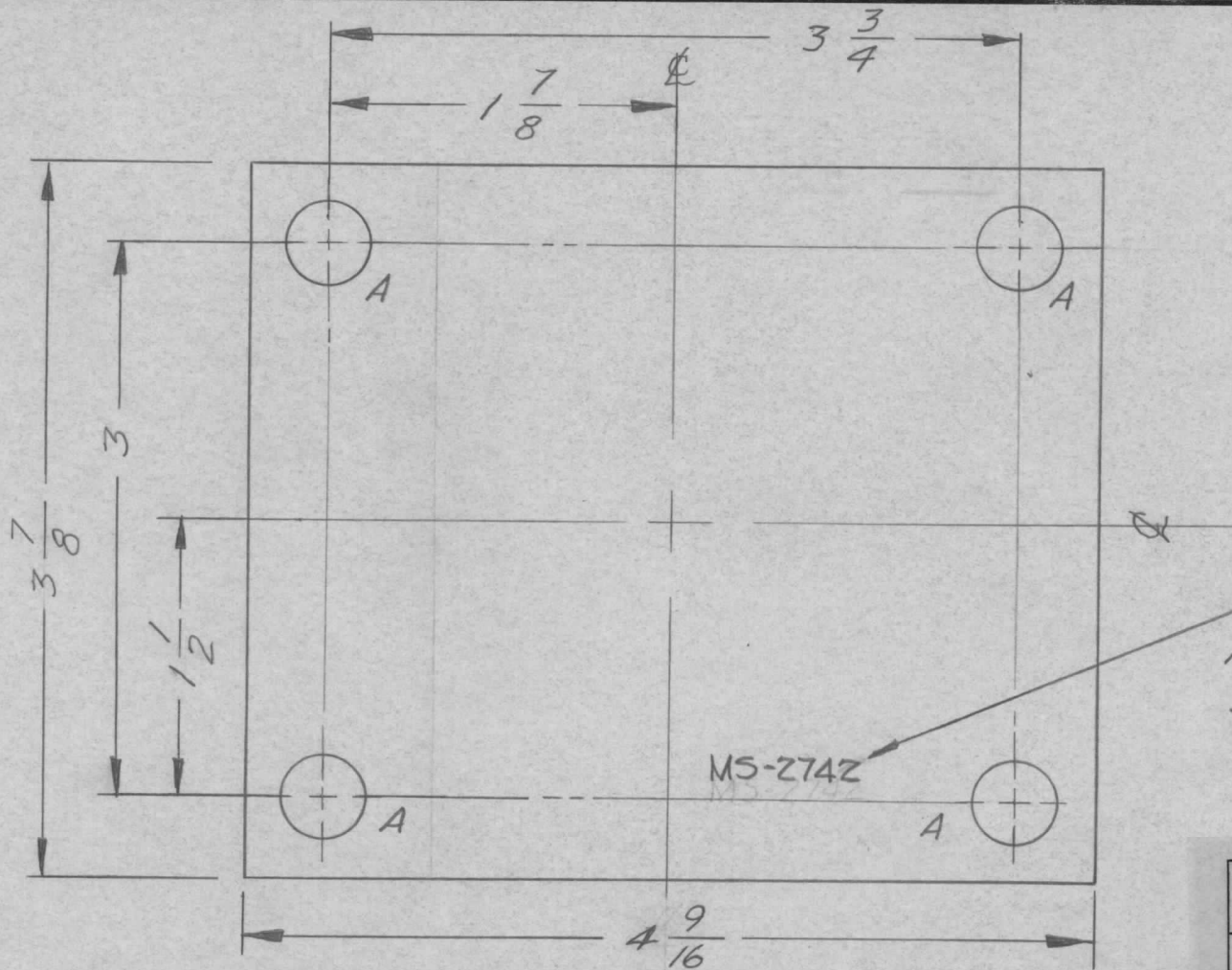
1

SBS-1 Power Supply

A-2209-5

11-4-61

MS-2742



HOLES:  
A-  $\frac{7}{16}$  DIA. 4 REQ.

METAL STAMP TMC PART NO. 1/8 HIGH GOTHIC AS SHOWN.

UNLESS OTHERWISE SPECIFIED	
DIMENSIONS ARE IN INCHES AND INCLUDE CHEMICALLY APPLIED OR PLATED FINISHES	
DECIMALS	FRACTIONS
.X ± .05	± 1/64
.XX ± .01	ANGLES
.XXX ± .005	± 0° 30'

CUT HERE GUARANTEED 2-66

REQ.	ITEM	PART NO.	DESCRIPTION			SYMBOL
		1/8	THE TECHNICAL MATERIEL CORP.			
		STOCK SIZE	MAMARONECK, NEW YORK			
		ALUMINUM	PLATE, SHIM, MOUNTING,			
		MATERIAL	TRANSFORMER			
5052-H32			wh	RUTZEE	Ron Kohn	
TYPE & TEMPER		HEAT TREAT. SPEC.	DRAWN	CHECKED	FINAL APPROVAL	
S-404 YEL. IRIDITE			RK	RK	MS-2742	
FINISH & SPEC. NO.		ELEC. DES. APP.	MECH. DES. APP.			

UNLESS OTHERWISE SPECIFIED:  
DIMENSIONS ARE IN INCHES  
TOLERANCES ON  
FRAC. ± 1/64 DEC. ± .005 ANGLES ± 1/2°

SCALE:  
MAXIMUM ALLOWABLE TOLERANCES HAVE BEEN DETERMINED AND ANY DEVIATIONS WILL BE CAUSE FOR REJECTION.  
REMOVE ALL BURRS AND SHARP EDGES



THE CONTENTS OF THIS DRAWING ARE THE EXCLUSIVE PROPERTY OF THE TECHNICAL MATERIEL CORP. ITS UNAUTHORIZED USE OR REPRODUCTION IN WHOLE OR IN PART IS STRICTLY FORBIDDEN.

REQ. PER UNIT

6

USED ON

MODEL

ASS'Y. NO.

DATE

TER 250/300U

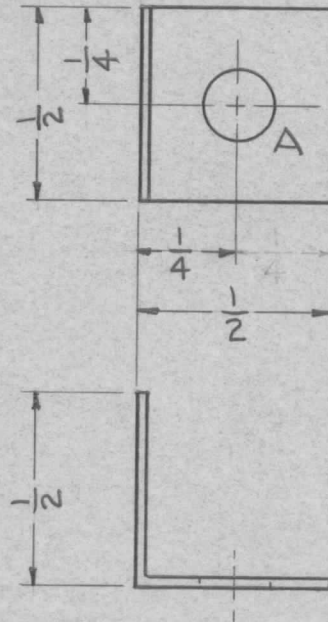
A-2225

11-4-61

MS-2743

HOLE:

A -  $\frac{3}{16}$  DIA.



UNLESS OTHERWISE SPECIFIED DIMENSIONS ARE IN INCHES AND INCLUDE CHEMICALLY APPLIED OR PLATED FINISHES	
DECIMALS .X ± .05 .XX ± .01 .XXX ± .005	FRACTIONS ± 1/64 ANGLES ± 0° 30'

CUT HERE  
GUARANTEED  
2-66

REQ.	ITEM	PART NO.	DESCRIPTION	SYMBOL					
		.025	THE TECHNICAL MATERIEL CORP.						
		STOCK SIZE	MAMARONECK, NEW YORK						
		COPPER	CONTACT, RESISTOR						
		MATERIAL							
SYM	DESCRIPTION	DATE	CH. NO.	DRAFTS	CHECKER	ENG. APP.			
UNLESS OTHERWISE SPECIFIED: DIMENSIONS ARE IN INCHES TOLERANCES ON FRAC. ± 1/64 DEC. ± .005 ANGLES ± 1/2°		SCALE: 2 TO 1		MAXIMUM ALLOWABLE TOLERANCES HAVE BEEN DETERMINED AND ANY DEVIATIONS WILL BE CAUSE FOR REJECTION. REMOVE ALL BURRS AND SHARP EDGES					
		TYPE & TEMPER	HEATTREAT. SPEC.	DRAWN	CHECKED	FINAL APPROVAL			
		S-245 SILVER PLATE .0002		aa		MS-2743			
		FINISH & SPEC. NO.	ELEC. DES. APP.	MECH. DES. APP.					

THE CONTENTS OF THIS DRAWING ARE THE EXCLUSIVE PROPERTY OF THE TECHNICAL MATERIEL CORP. ITS UNAUTHORIZED USE OR REPRODUCTION IN WHOLE OR IN PART IS STRICTLY FORBIDDEN.

REQ. PER UNIT

USED ON

MODEL

ASS'Y. NO.

DATE

1

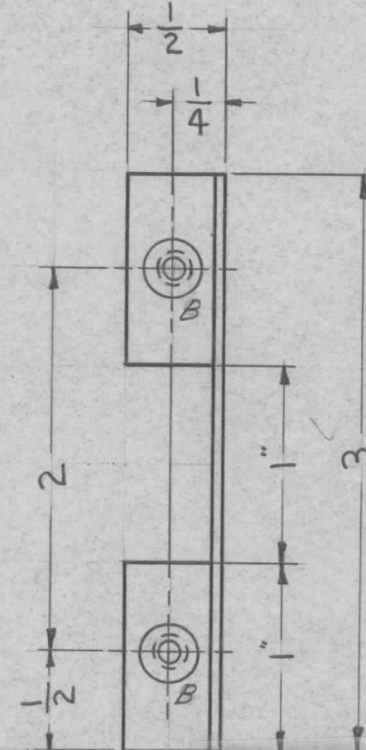
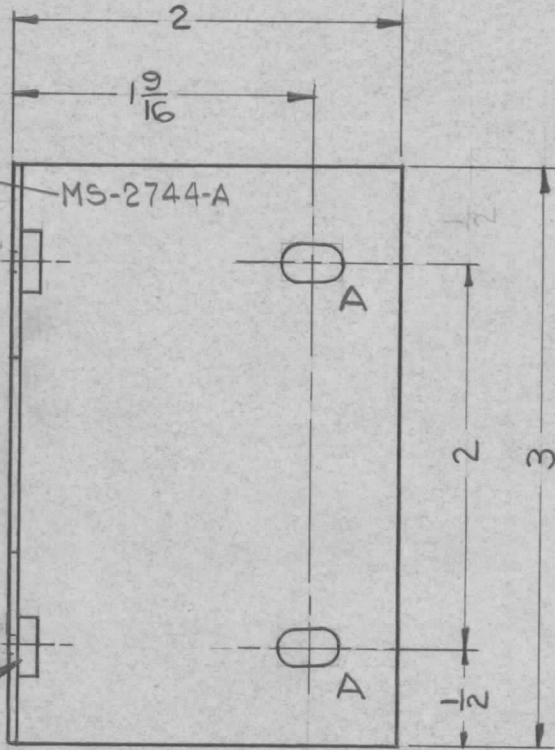
TER 250/300U

A-2225

11-4-61

MS-2744 A

METAL STAMP  
TMC PART 1/8  
HIGH GOTHIC  
AS SHOWN



HOLES:

A -  $\frac{3}{16} \times \frac{5}{16}$  SLOT 2 REQ.

B - .221-.224 DIA. 2 REQ.

C - NT-129-832-4 2 REQ.

MOUNT ITEM 1 IN ALL "B" HOLES AFTER FINISHING.

UNLESS OTHERWISE SPECIFIED  
DIMENSIONS ARE IN INCHES AND INCLUDE  
CHEMICALLY APPLIED OR PLATED FINISHES

DECIMALS	TOLERANCES	FRACTIONS
.X ± .05		± 1/64
.XX ± .01		ANGLES ± 0° 30'
.XXX ± .005		

CUT HERE  
GUARANTEED  
2-66

						2	1	NT-129-832-4	NUT, ROUND, SWAGE	B		
						REQ.	ITEM	PART NO.	DESCRIPTION	SYMBOL		
								.064	THE TECHNICAL MATERIEL CORP. MAMARONECK, NEW YORK			
								ALUMINUM	BRACKET, INSULATOR SUPPORT			
								5052-H32	R. Jurkin	203		
								TYPE & TEMPER	HEAT TREAT. SPEC.	DRAWN	CHECKED	FINAL APPROVAL
								S-404 YEL. IRIDITE	aa			MS-2744 A
								FINISH & SPEC. NO.	ELEC. DES. APP.	MECH. DES. APP.		

UNLESS OTHERWISE SPECIFIED:  
DIMENSIONS ARE IN INCHES  
TOLERANCES ON  
FRAC. ± 1/64 DEC. ± .005 ANGLES ± 1/2°

SCALE: 1" = 1"  
MAXIMUM ALLOWABLE TOLERANCES HAVE BEEN DETERMINED AND ANY DEVIATIONS WILL BE CAUSE FOR REJECTION.  
REMOVE ALL BURRS AND SHARP EDGES

THE CONTENTS OF THIS DRAWING ARE THE EXCLUSIVE PROPERTY OF THE TECHNICAL MATERIEL CORP. ITS UNAUTHORIZED USE OR REPRODUCTION IN WHOLE OR IN PART IS STRICTLY FORBIDDEN.

REQ. PER UNIT

USED ON

MODEL

ASS'Y. NO.

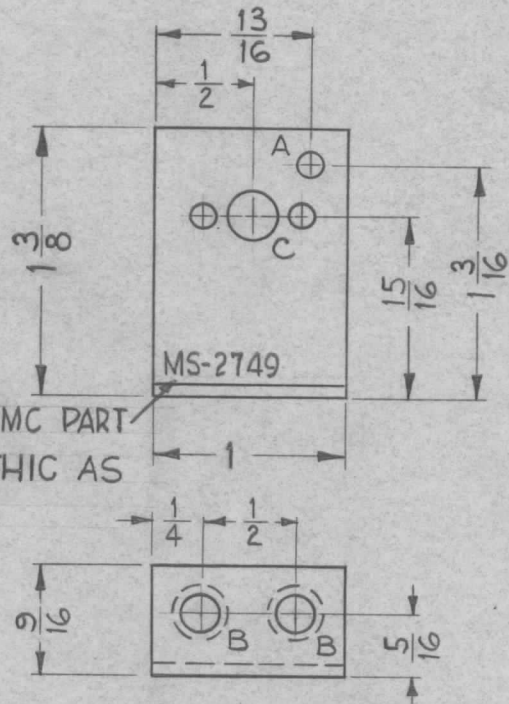
DATE

1

SBS-1

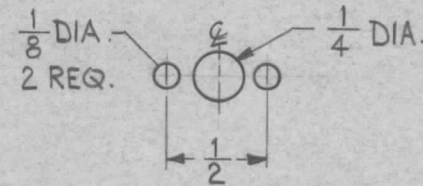
11-8-61

MS-2749



A ~ 1/8 DIA. 1 REQ.

B ~ .191-.194 DIA. 2 REQ.



"C" DETAIL  
1 REQ.



1 MOUNT ITEM ① IN ALL "B" HOLES AS SHOWN AFTER FINISHING.

USE MATERIAL THICKNESS FOR MAX. RADIUS ON ALL BENDS UNLESS OTHERWISE SPECIFIED

MOUNT INSERTS AFTER FINISHING

UNLESS OTHERWISE SPECIFIED DIMENSIONS ARE IN INCHES AND INCLUDE CHEMICALLY APPLIED OR PLATED FINISHES		
DECIMALS	TOLERANCES	FRACTIONS
.X ± .05		± 1/64
.XX ± .01		ANGLES
.XXX ± .005		± 0° 30'

CUT HERE GUARANTEED 2-66

2	1	NT-129-G32-4	NUT, ROUND, SWAGE TYPE	
REQ.	ITEM	PART NO.	DESCRIPTION	SYMBOL
		.064	THE TECHNICAL MATERIEL CORP.	
		STOCK SIZE	MAMARONECK, NEW YORK	
		ALUMINUM	BRACKET, MOUNTING	
		MATERIAL	POTENTIOMETER (LEFT SIDE)	
		5052-H32	W.A.F.	J.W.
		TYPE & TEMPER	DRAWN	CHECKED
		HEAT TREAT. SPEC.		FINAL APPROVAL
		S404 YEL IRIDITE		
		FINISH & SPEC. NO.	ELEC. DES. APP.	MECH. DES. APP.
				MS-2749

METAL STAMP TMC PART NO. 1/8 HIGH GOTHIC AS SHOWN.

UNLESS OTHERWISE SPECIFIED: DIMENSIONS ARE IN INCHES. TOLERANCES ON  
 FRAC. ± 1/64 DEC. ± .005 ANGLES ± 1/2°

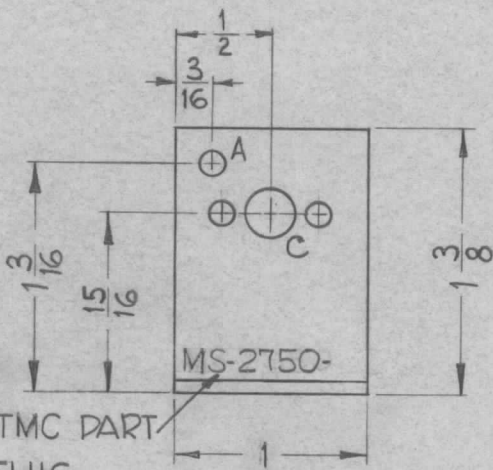
SCALE: FULL (DO NOT SCALE).  
 MAXIMUM ALLOWABLE TOLERANCES HAVE BEEN DETERMINED AND ANY DEVIATIONS WILL BE CAUSE FOR REJECTION. REMOVE ALL BURRS AND SHARP EDGES

THE CONTENTS OF THIS DRAWING ARE THE EXCLUSIVE PROPERTY OF THE TECHNICAL MATERIEL CORP. ITS UNAUTHORIZED USE OR REPRODUCTION IN WHOLE OR IN PART IS STRICTLY FORBIDDEN.

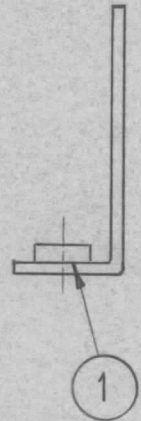
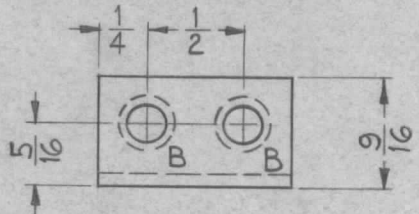
REQ. PER UNIT  
1

USED ON		
MODEL	ASS'Y. NO.	DATE
SBS-1		11-9-61

MS-2750

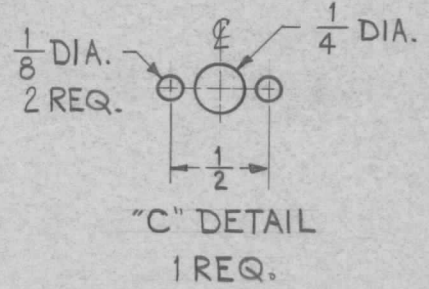


METAL STAMP TMC PART  
NO.  $\frac{1}{8}$ " HIGH GOTHIC  
AS SHOWN.



MOUNT ITEM ① IN ALL "B"  
HOLES AS SHOWN  
AFTER FINISHING.

A ~  $\frac{1}{8}$  DIA. 1 REQ.  
B ~ .191-.194 DIA. 2 REQ.



USE MATERIAL THICKNESS FOR MAX. RADIUS  
ON ALL BENDS UNLESS OTHERWISE SPECIFIED

MOUNT INSERTS AFTER FINISHING

UNLESS OTHERWISE SPECIFIED DIMENSIONS ARE IN INCHES AND INCLUDE CHEMICALLY APPLIED OR PLATED FINISHES	
DECIMALS	FRACTIONS
.X ± .05	± 1/64
.XX ± .01	ANGLES ± 0° 30'
.XXX ± .005	

CUT HERE  
GUARANTEED  
2-66

SYM	DESCRIPTION	DATE	CH. NO.	DRAFTS	CHECKER	ENG. APP.	REQ.	ITEM	PART NO.	DESCRIPTION	SYMBOL
							2	1	NT-129-632-4	NUT, ROUND, SWAGE TYPE	B
									.064	THE TECHNICAL MATERIEL CORP. MAMARONECK, NEW YORK	
									ALUMINUM	BRACKET, MOUNTING	
										POTENTIOMETER (RIGHT SIDE)	
									5052-H32	<i>M.A.F.</i>	<i>J.H.</i>
									S404 YEL IRIDITE	<i>Dark</i>	<i>P.S.M.</i>
											MS-2750

UNLESS OTHERWISE SPECIFIED:  
DIMENSIONS ARE IN INCHES.  
TOLERANCES ON  
FRAC. ± 1/64 DEC. ± .005 ANGLES ± 1/2°

SCALE: FULL (DO NOT SCALE)  
MAXIMUM ALLOWABLE TOLERANCES HAVE  
BEEN DETERMINED AND ANY DEVIATIONS  
WILL BE CAUSE FOR REJECTION.  
REMOVE ALL BURRS AND SHARP EDGES

THE CONTENTS OF THIS DRAWING ARE THE EXCLUSIVE PROPERTY OF THE TECHNICAL MATERIEL CORP. ITS UNAUTHORIZED USE OR REPRODUCTION IN WHOLE OR IN PART IS STRICTLY FORBIDDEN.

REQ. PER UNIT

1

MODEL

KIT-113

USED ON

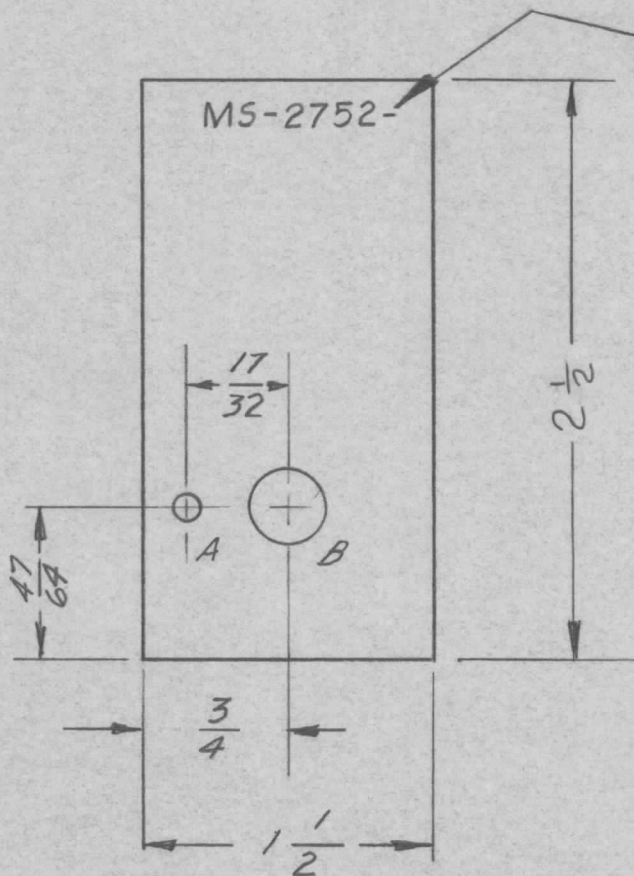
ASS'Y. NO.

DATE

12-5-61

MS-2752

A



METAL STAMP TMC PART NO.  $\frac{1}{8}$  HIGH GOTHIC AS SHOWN, WITH LATEST REVISION LETTER

HOLES:

A -  $\frac{1}{8}$  DIA.

1 REQ.

B -  $\frac{3}{8}$  DIA.

1 REQ.

REF: LD-1008

UNLESS OTHERWISE SPECIFIED DIMENSIONS ARE IN INCHES AND INCLUDE CHEMICALLY APPLIED OR PLATED FINISHES

DECIMALS  
.X ± .05  
.XX ± .01  
.XXX ± .005

TOLERANCES

FRACTIONS  
± 1/64  
ANGLES  
± 0° 30'

CUT HERE  
GUARANTEED  
2-66

REQ.	ITEM	PART NO.	DESCRIPTION			SYMBOL			
		.081	THE TECHNICAL MATERIEL CORP.						
		STOCK SIZE	MAMARONECK, NEW YORK						
A	2 1/2 WAS 3 (DIM)	7.6.64 11675 kb	PLATE, MOUNTING,						
		ALUMINUM	POTENTIOMETER						
SYM	DESCRIPTION	DATE	CH. NO.	DRAFTS	CHECKER	ENG. APP.			
UNLESS OTHERWISE SPECIFIED: DIMENSIONS ARE IN INCHES TOLERANCES ON FRAC. ± 1/64 DEC. ± .005 ANGLES ± 1/2°		SCALE: DO NOT SCALE		5052-H32			wh	He	SAM
MAXIMUM ALLOWABLE TOLERANCES HAVE BEEN DETERMINED AND ANY DEVIATIONS WILL BE CAUSE FOR REJECTION. REMOVE ALL BURRS AND SHARP EDGES				5404 YEL. IRIDITE			oob	aa	MS-2752
				FINISH & SPEC. NO.			ELEC. DES. APP.	MECH. DES. APP.	A

THE CONTENTS OF THIS DRAWING ARE THE EXCLUSIVE PROPERTY OF THE TECHNICAL MATERIEL CORP. ITS UNAUTHORIZED USE OR REPRODUCTION IN WHOLE OR IN PART IS STRICTLY FORBIDDEN.

REQ. PER UNIT

USED ON

MODEL

ASS'Y. NO.

DATE

1

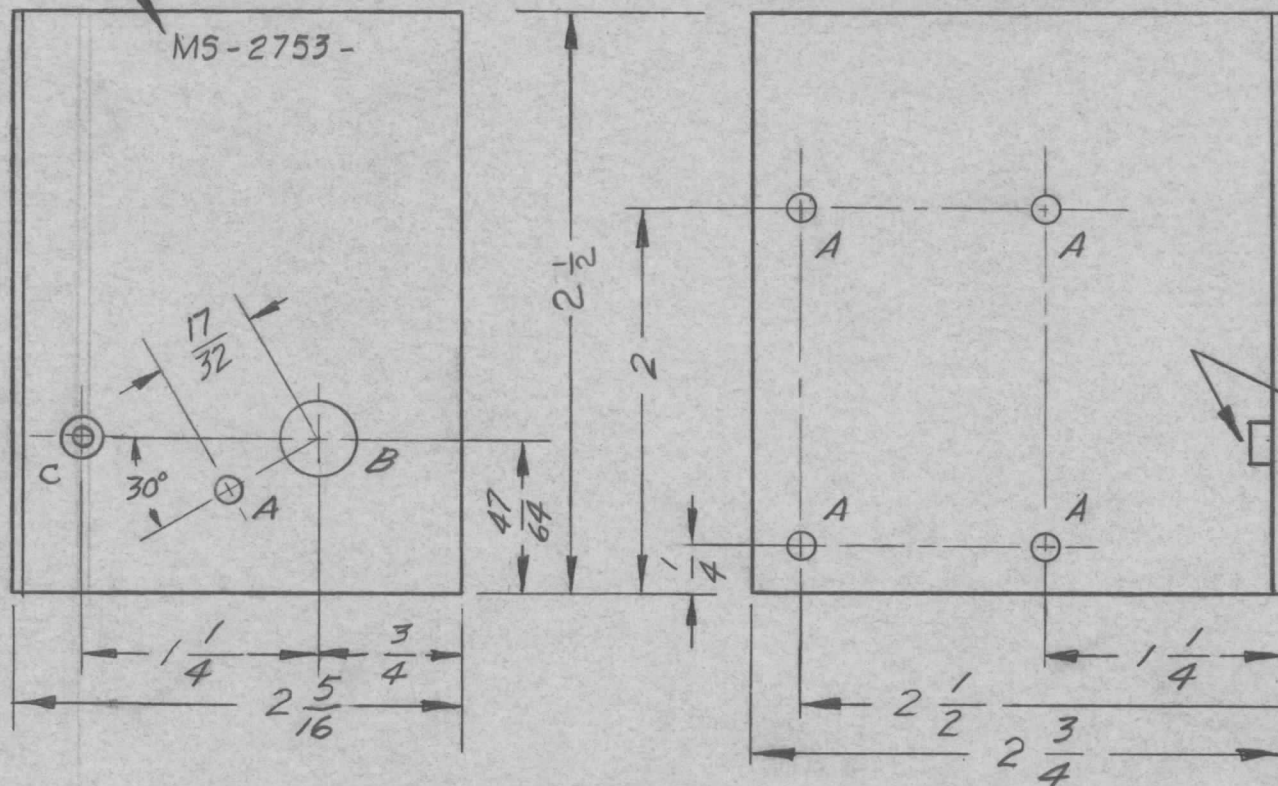
KIT-113

12-5-61

MS-2753

A

METAL STAMP TMC PART NO. WITH LATEST REVISION LETTER  $\frac{1}{8}$  HIGH GOTHIC AS SHOWN.



HOLE:

A- $\frac{1}{8}$  DIA. 5 REQ.

B- $\frac{3}{8}$  DIA. 1 REQ.

C-.191-.194 DIA. 1 REQ.

MOUNT ITEM 1 IN "C" HOLE AFTER FINISHING.

UNLESS OTHERWISE SPECIFIED DIMENSIONS ARE IN INCHES AND INCLUDE CHEMICALLY APPLIED OR PLATED FINISHES

DECIMALS	TOLERANCES	FRACTIONS
.X ± .05		± 1/64
.XX ± .01		ANGLES
.XXX ± .005		± 0° 30'

CUT HERE  
GUARANTEED  
2-66

1	1	NT-129-632-4	NUT, ROUND, SWAGE TYPE			C
REQ.	ITEM	PART NO.	DESCRIPTION			SYMBOL
		.081	THE TECHNICAL MATERIEL CORP.			
		ALUMINUM	MAMARONECK, NEW YORK			
A	2 1/2 WAS 3 (DIM)	7.6.64	11675	WJB	P. [Signature]	QB
SYM	DESCRIPTION	DATE	CH. NO.	DRAFTS	CHECKER	ENG. APP.
UNLESS OTHERWISE SPECIFIED: DIMENSIONS ARE IN INCHES TOLERANCES ON FRAC. ± 1/64 DEC. ± .005 ANGLES ± 1/2°		SCALE: DO NOT SCALE				
MAXIMUM ALLOWABLE TOLERANCES HAVE BEEN DETERMINED AND ANY DEVIATIONS WILL BE CAUSE FOR REJECTION. REMOVE ALL BURRS AND SHARP EDGES		5052-H32				
TYPE & TEMPER		HEAT TREAT. SPEC.		DRAWN	CHECKED	FINAL APPROVAL
5404 YEL. IRIDITE				WJB	AA	MS-2753 A
FINISH & SPEC. NO.		ELEC. DES. APP.		MECH. DES. APP.		

THE CONTENTS OF THIS DRAWING ARE THE EXCLUSIVE PROPERTY OF THE TECHNICAL MATERIEL CORP. ITS UNAUTHORIZED USE OR REPRODUCTION IN WHOLE OR IN PART IS STRICTLY FORBIDDEN.

REQ. PER UNIT

2

USED ON

MODEL

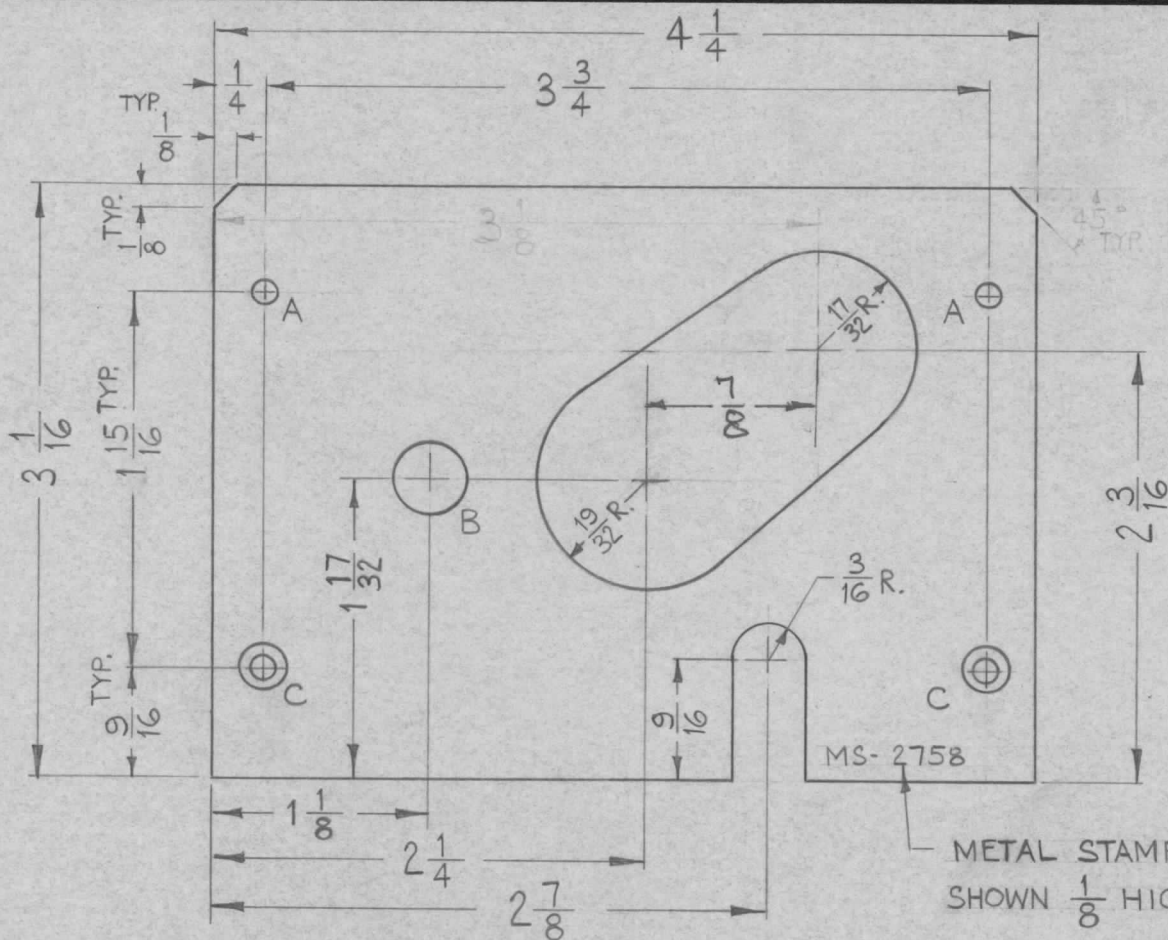
AFC-2

ASS'Y. NO.

DATE

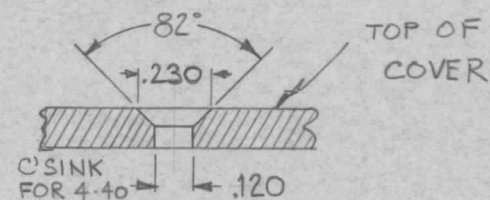
11-20-61

MS-2758



A ~ 1/8 DIA. 2 REQ.

B ~ 1/2 DIA. 1 "



"C" DETAIL

2 REQ.

METAL STAMP TMC PART NO. AS SHOWN 1/8 HIGH GOTHIC.

UNLESS OTHERWISE SPECIFIED DIMENSIONS ARE IN INCHES AND INCLUDE CHEMICALLY APPLIED OR PLATED FINISHES

DECIMALS	FRACTIONS
.X ± .05	± 1/64
.XX ± .01	ANGLES
.XXX ± .005	± 0° 30'

CUT HERE GUARANTEED 2-66

SYM	DESCRIPTION	DATE	CH. NO.	DRAFTS	CHECKER	ENG. APP.	REQ. ITEM	PART NO.	DESCRIPTION	SYMBOL
								.064	THE TECHNICAL MATERIEL CORP. MAMARONECK, NEW YORK COVER, OVEN HOUSING	
								STOCK SIZE		
								ALUMINUM		
								MATERIAL		
							5052-H32			
UNLESS OTHERWISE SPECIFIED: DIMENSIONS ARE IN INCHES. TOLERANCES ON FRAC. ± 1/64 DEC. ± .005 ANGLES ± 1/2°		SCALE: DO NOT SCALE								
		MAXIMUM ALLOWABLE TOLERANCES HAVE BEEN DETERMINED AND ANY DEVIATIONS WILL BE CAUSE FOR REJECTION. REMOVE ALL BURRS AND SHARP EDGES								
								S404 YEL IRIDITE		
								FINISH & SPEC. NO.	ELEC. DES. APP.	MECH. DES. APP.
										MS-2758

THE CONTENTS OF THIS DRAWING ARE THE EXCLUSIVE PROPERTY OF THE TECHNICAL MATERIEL CORP. ITS UNAUTHORIZED USE OR REPRODUCTION IN WHOLE OR IN PART IS STRICTLY FORBIDDEN.

REQ. PER UNIT

1 HFP-1

USED ON

MODEL

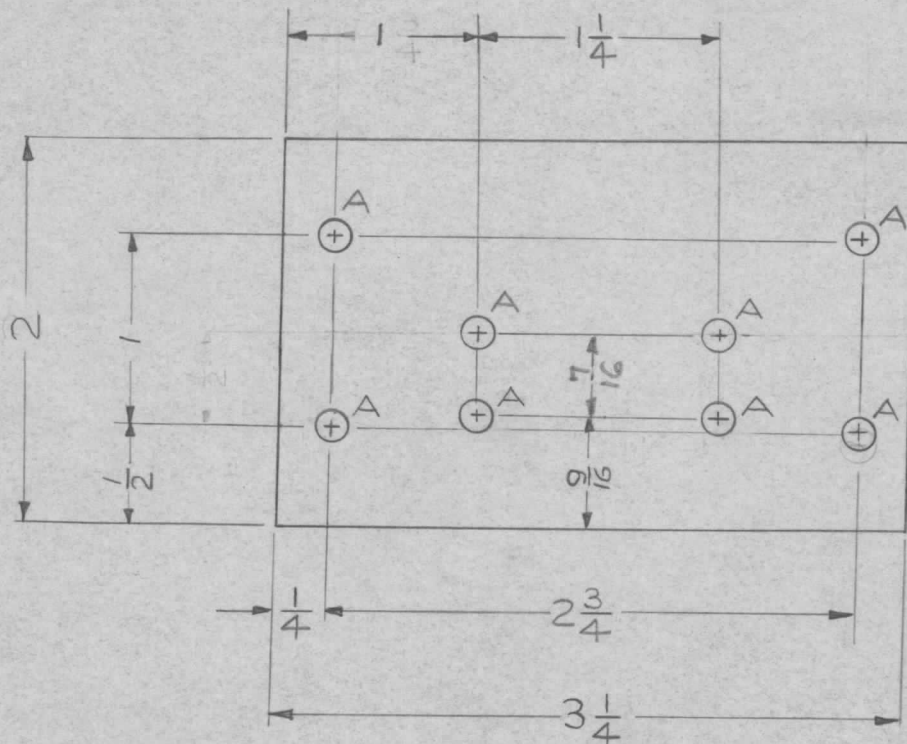
ASS'Y. NO.

DATE

11-27-61

MS-2768

A ~  $\frac{5}{32}$  DIA. 8 REQ.



REF. (LD-1033)

UNLESS OTHERWISE SPECIFIED  
DIMENSIONS ARE IN INCHES AND INCLUDE  
CHEMICALLY APPLIED OR PLATED FINISHES

DECIMALS	TOLERANCES	FRACTIONS
.X ± .05		± 1/64
.XX ± .01		ANGLES
.XXX ± .005		± 0° 30'

CUT HERE  
GUARANTEED  
2-66

SYM	DESCRIPTION	DATE	CH. NO.	DRAFTS	CHECKER	ENG. APP.	REQ. ITEM	PART NO.	DESCRIPTION	SYMBOL
									KOHN	
								.064	THE TECHNICAL MATERIEL CORP.	
								STOCK SIZE	MAMARONECK, NEW YORK	
								ALUMINUM	BRACKET, RELAY MTG.	
								MATERIAL		
							5052-H32		C. A.	
							TYPE & TEMPER	HEAT TREAT. SPEC.	DRAWN	CHECKED
							S404 YEL IRIDITE		RKohn	RKohn
							FINISH & SPEC. NO.		ELEC. DES. APP.	MECH. DES. APP.
										MS-2768

UNLESS OTHERWISE SPECIFIED:  
DIMENSIONS ARE IN INCHES  
TOLERANCES ON  
FRAC. ± 1/64 DEC. ± .005 ANGLES ± 1/2°

SCALE:  
MAXIMUM ALLOWABLE TOLERANCES HAVE BEEN DETERMINED AND ANY DEVIATIONS WILL BE CAUSE FOR REJECTION.  
REMOVE ALL BURRS AND SHARP EDGES



THE CONTENTS OF THIS DRAWING ARE THE EXCLUSIVE PROPERTY OF THE TECHNICAL MATERIEL CORP. ITS UNAUTHORIZED USE OR REPRODUCTION IN WHOLE OR IN PART IS STRICTLY FORBIDDEN.

REQ. PER UNIT

1

MODEL  
SBS-1

USED ON

ASS'Y. NO.

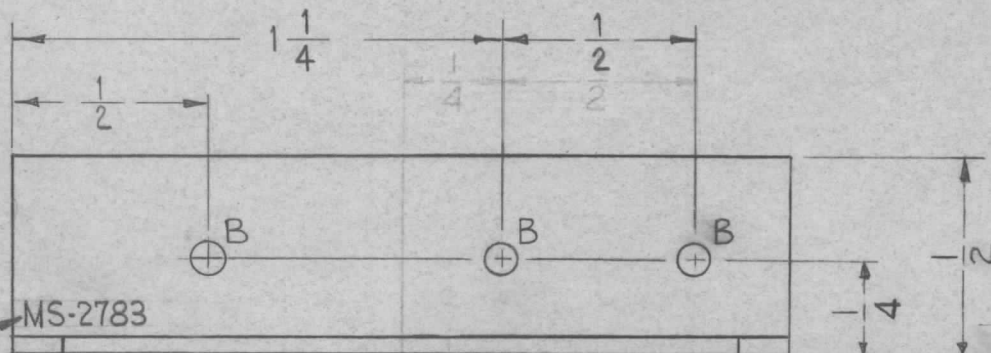
DATE

12-2-61

MS-2783

LEGEND

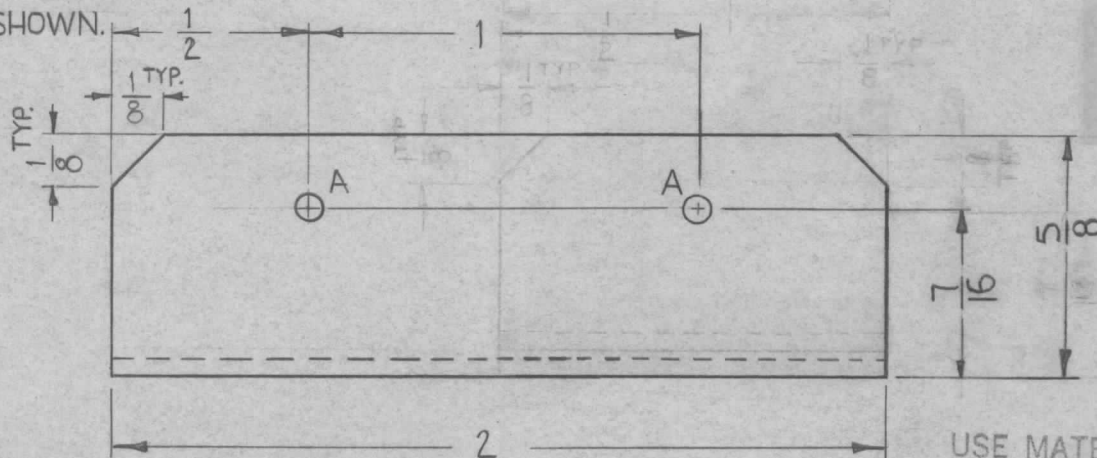
HOLE	DESCRIPTION	REQ'D
A	$\frac{1}{8}$ DIA.	2
B	$\frac{5}{32}$ DIA.	3



MS-2783

METAL STAMP TMC PART NO.

$\frac{1}{8}$  HIGH GOTHIC AS SHOWN.



UNLESS OTHERWISE SPECIFIED DIMENSIONS ARE IN INCHES AND INCLUDE CHEMICALLY APPLIED OR PLATED FINISHES		
DECIMALS	TOLERANCES	FRACTIONS
.X ± .05		± 1/64
.XX ± .01		ANGLES ± 0° 30'
.XXX ± .005		

CUT HERE  
GUARANTEED  
2-66

USE MATERIAL THICKNESS FOR MAX. RADIUS ON ALL BENDS UNLESS OTHERWISE SPECIFIED

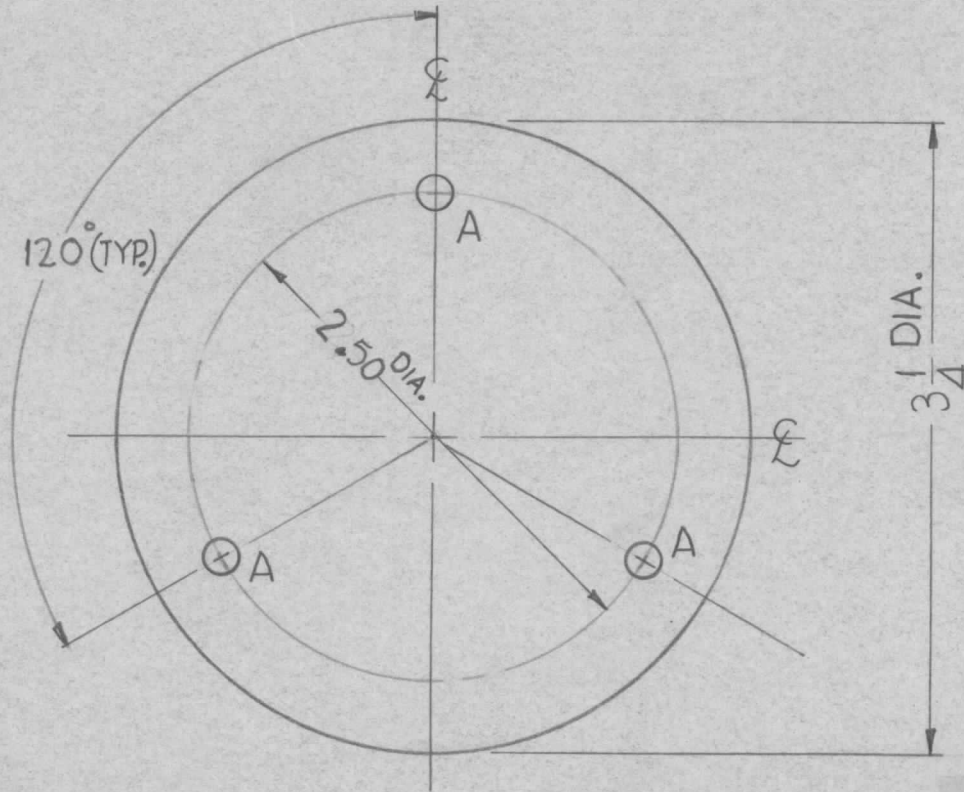
SYM	DESCRIPTION	DATE	CH. NO.	DRAFTS	CHECKER	ENG. APP.	REQ. ITEM	PART NO.	DESCRIPTION	SYMBOL	
								.051	THE TECHNICAL MATERIEL CORP. MAMARONECK, NEW YORK	BRACKET, MOUNTING, TRANSFORMER	
								STOCK SIZE			
								ALUMINUM			
								MATERIAL			
							5052-432		DRAWN	CHECKED	
								HEAT TREAT. SPEC.			
							S404 YEL. IRIDITE				
								FINISH & SPEC. NO.	ELEC. DES. APP.	MECH. DES. APP.	
UNLESS OTHERWISE SPECIFIED: DIMENSIONS ARE IN INCHES TOLERANCES ON FRAC. ± 1/64 DEC. ± .005 ANGLES ± 1/2°		SCALE: DO NOT SCALE					MAXIMUM ALLOWABLE TOLERANCES HAVE BEEN DETERMINED AND ANY DEVIATIONS WILL BE CAUSE FOR REJECTION. REMOVE ALL BURRS AND SHARP EDGES		FINAL APPROVAL MS-2783		

THE CONTENTS OF THIS DRAWING ARE THE EXCLUSIVE PROPERTY OF THE TECHNICAL MATERIEL CORP. ITS UNAUTHORIZED USE OR REPRODUCTION IN WHOLE OR IN PART IS STRICTLY FORBIDDEN.

REQ. PER UNIT	USED ON		
	MODEL	ASS'Y. NO.	DATE
1	TER-18K-A50		12-19-61
1	TER-18K-C50		

MS-2787

HOLE	DESCRIPTION	REQ.
A	13/64 DIA.	3



UNLESS OTHERWISE SPECIFIED DIMENSIONS ARE IN INCHES AND INCLUDE CHEMICALLY APPLIED OR PLATED FINISHES	
DECIMALS	FRACTIONS
.X ± .05	± 1/64
.XX ± .01	ANGLES
.XXX ± .005	± 0° 30'

CUT HERE  
GUARANTEED  
2-66

SYM	DESCRIPTION	DATE	CH. NO.	DRAFTS	CHECKER	ENG. APP.	REQ.	ITEM	PART NO.	DESCRIPTION	SYMBOL		
									.081	THE TECHNICAL MATERIEL CORP. MAMARONECK, NEW YORK PLATE, COVER (TER-18K)			
									STOCK SIZE				
									ALUMINUM				
									MATERIAL				
								5052-H32		D. J. Mann			
UNLESS OTHERWISE SPECIFIED: DIMENSIONS ARE IN INCHES TOLERANCES ON FRAC. ± 1/64 DEC. ± .005 ANGLES ± 1/2°		SCALE: FULL		MAXIMUM ALLOWABLE TOLERANCES HAVE BEEN DETERMINED AND ANY DEVIATIONS WILL BE CAUSE FOR REJECTION. REMOVE ALL BURRS AND SHARP EDGES					TYPE & TEMPER	HEAT TREAT. SPEC.	DRAWN	CHECKED	FINAL APPROVAL
									RCAF BLUE S-220		aa		MS-2787
									FINISH & SPEC. NO.	ELEC. DES. APP.	MECH. DES. APP.		

THE CONTENTS OF THIS DRAWING ARE THE EXCLUSIVE PROPERTY OF THE TECHNICAL MATERIEL CORP. ITS UNAUTHORIZED USE OR REPRODUCTION IN WHOLE OR IN PART IS STRICTLY FORBIDDEN.

REQ. PER UNIT

2

USED ON

MODEL

SBS-1

ASS'Y. NO.

DATE

12-5-61

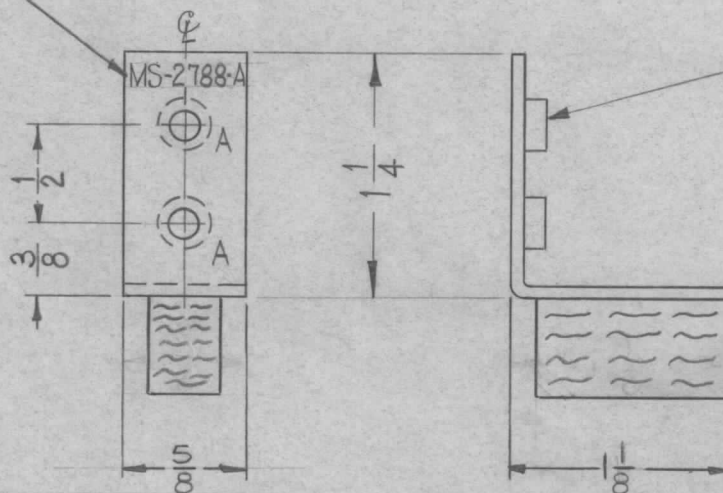
MS-2788



LEGEND

HOLE	DESCRIPTION	REQ.
A	.161-.164 DIA.	2

METAL STAMP TMC PART NO.  $\frac{1}{8}$ " HIGH GOTHIC AS SHOWN.



① MOUNT ITEM ① IN ALL "A" HOLES AS SHOWN AFTER FINISHING.

② USE MATERIAL THICKNESS FOR MAX. RADIUS ON ALL BENDS UNLESS OTHERWISE SPECIFIED

MOUNT INSERTS AFTER FINISHING

UNLESS OTHERWISE SPECIFIED DIMENSIONS ARE IN INCHES AND INCLUDE CHEMICALLY APPLIED OR PLATED FINISHES

DECIMALS	FRACTIONS
.X ± .05	± 1/64
.XX ± .01	ANGLES ± 0° 30'
.XXX ± .005	

TOLERANCES

CUT HERE GUARANTEED 2-66

1"	2	RY-121-8-6-1.00	STRIP, SPONGE RUBBER	
2	1	NT-129-440-4	NUT, ROUND, SWAGE TYPE	A

REQ.	ITEM	PART NO.	DESCRIPTION	SYMBOL								
		.064	THE TECHNICAL MATERIEL CORP. MAMARONECK, NEW YORK									
		ALUMINUM	BRACKET, SUPPORT, OVEN									
A	ITEM ② ADDED	2-12-62 6343										
SYM	DESCRIPTION	DATE	CH. NO.	DRAFTS	CHECKER	ENG. APP.	MATERIAL	TYPE & TEMPER	HEAT TREAT. SPEC.	DRAWN	CHECKED	FINAL APPROVAL
	UNLESS OTHERWISE SPECIFIED: DIMENSIONS ARE IN INCHES. TOLERANCES ON FRAC. ± 1/64 DEC. ± .005 ANGLES ± 1/2°	SCALE: (DO NOT SCALE).					5052-H32					
							S404 YEL. IRIDITE					MS-2788
							FINISH & SPEC. NO.			ELEC. DES. APP.		MECH. DES. APP.

THE CONTENTS OF THIS DRAWING ARE THE EXCLUSIVE PROPERTY OF THE TECHNICAL MATERIEL CORP. ITS UNAUTHORIZED USE OR REPRODUCTION IN WHOLE OR IN PART IS STRICTLY FORBIDDEN.

REQ. PER UNIT

3

USED ON

MODEL

GPT-40K

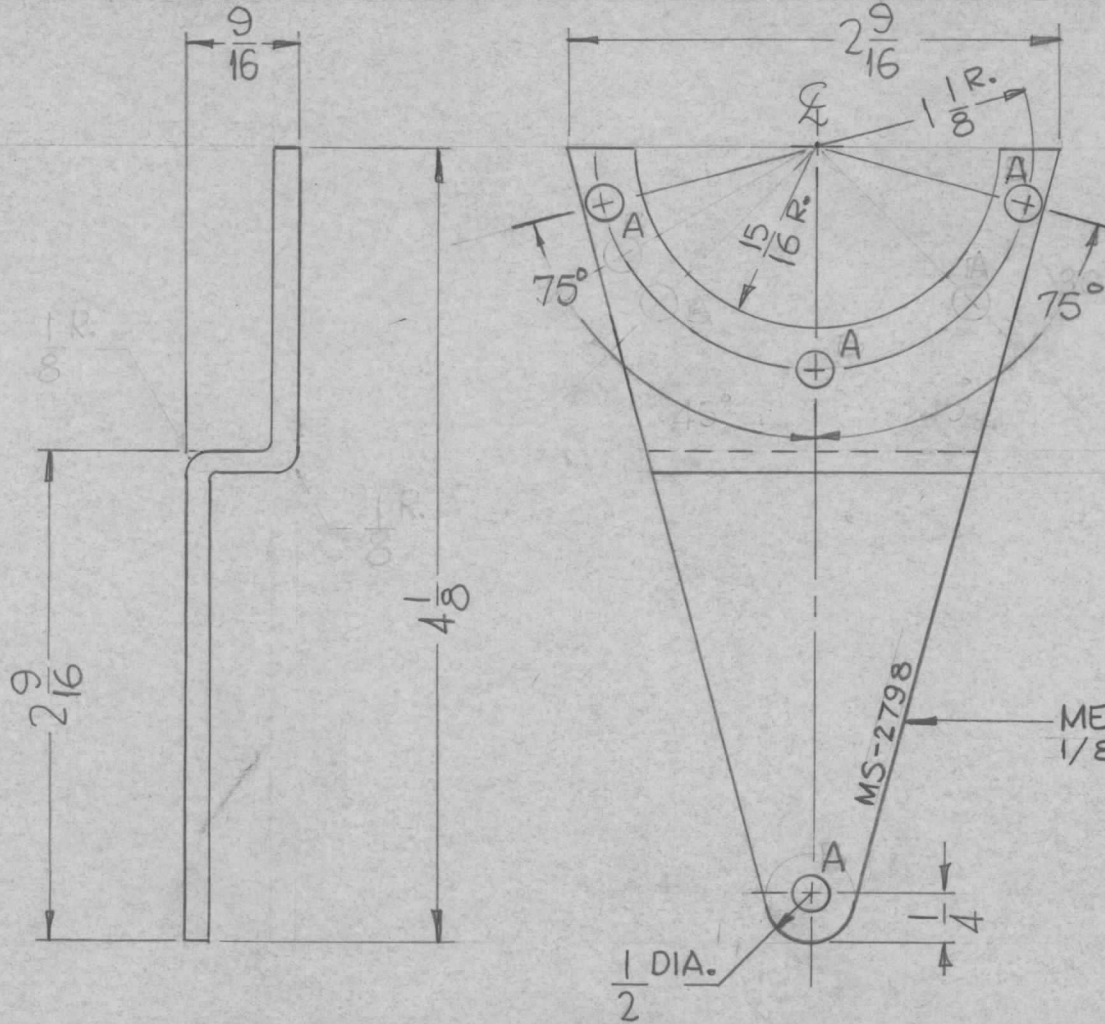
ASS'Y. NO.

AX-275

DATE

12-11-61

MS-2798



SYMBOL	DESCRIPTION	REQ.
A	3/16 DIA.	4

UNLESS OTHERWISE SPECIFIED DIMENSIONS ARE IN INCHES AND INCLUDE CHEMICALLY APPLIED OR PLATED FINISHES

DECIMALS  
.X ± .05  
.XX ± .01  
.XXX ± .005

TOLERANCES

FRACTIONS  
± 1/64  
ANGLES  
± 0° 30'

CUT HERE  
GUARANTEED  
2-66

METAL STAMP TMC PART NO. 1/8 HIGH AS SHOWN

USE MATERIAL THICKNESS FOR MAX. RADIUS ON ALL BENDS UNLESS OTHERWISE SPECIFIED

SYM	DESCRIPTION	DATE	CH. NO.	DRAFTS	CHECKER	ENG. APP.	REQ.	ITEM	PART NO.	DESCRIPTION	SYMBOL	
									1/8	THE TECHNICAL MATERIEL CORP.		
									STOCK SIZE	MAMARONECK, NEW YORK		
									ALUMINUM	BRACKET, KNOB HANDLE (LARGE)		
									MATERIAL			
									5052-H32	D. J. Manno RUZZO	SPM	
									TYPE & TEMPER	CHECKED	FINAL APPROVAL	
									HEAT TREAT. SPEC.			
									BLACK, ANODIZED		MS-2798	
									FINISH & SPEC. NO.	ELEC. DES. APP.	MECH. DES. APP.	
UNLESS OTHERWISE SPECIFIED: DIMENSIONS ARE IN INCHES TOLERANCES ON FRAC. ± 1/64 DEC. ± .005 ANGLES ± 1/2°		SCALE: MAXIMUM ALLOWABLE TOLERANCES HAVE BEEN DETERMINED AND ANY DEVIATIONS WILL BE CAUSE FOR REJECTION. REMOVE ALL BURRS AND SHARP EDGES										