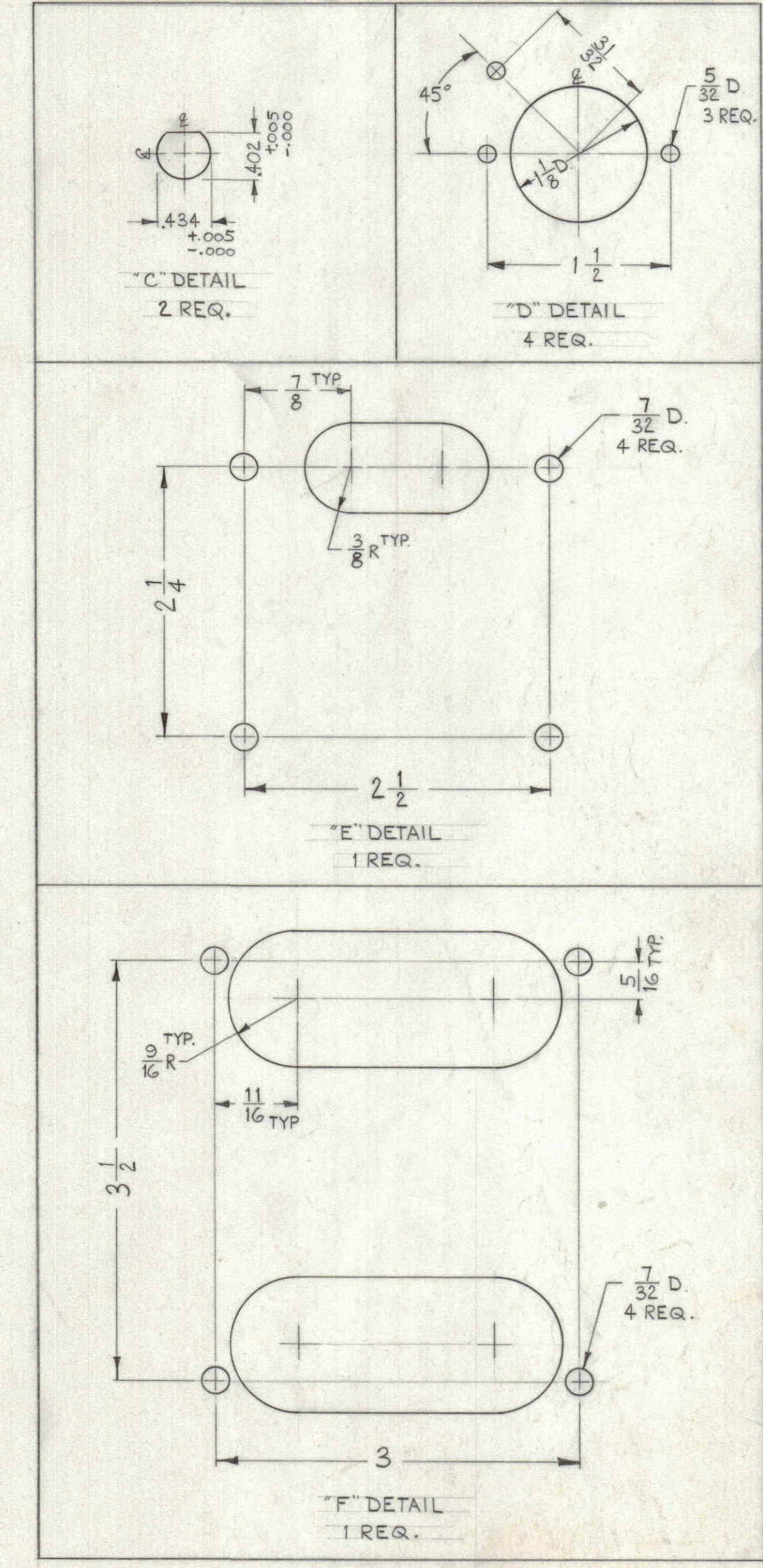


LEGEND		
HOLE	DESCRIPTION	REQ
A	3/16 DIA.	10
B	1/4 DIA	1

NOTICE TO PERSONS RECEIVING THIS DRAWING
 THE TECHNICAL MATERIEL CORPORATION claims proprietary right in the material disclosed herein. This drawing is issued in confidence for engineering information only and may not be reproduced or used to manufacture anything shown hereon without permission from THE TECHNICAL MATERIEL CORPORATION to the user. This drawing is loaned for mutual assistance and is subject to recall at any time.
 Property of:
 THE TECHNICAL MATERIEL CORPORATION
 MAMARONECK, NEW YORK



USE MATERIAL THICKNESS FOR MAX. RADIUS ON ALL BENDS UNLESS OTHERWISE SPECIFIED

UNLESS OTHERWISE SPECIFIED DIMENSIONS ARE IN INCHES AND INCLUDE CHEMICALLY APPLIED OR PLATED FINISHES
 DECIMALS ± .005 FRACTIONS ± 1/64 ANGLES ± 30'
 TOLERANCES
 DECIMALS ± .005 FRACTIONS ± 1/64 ANGLES ± 30'

SYM	ZONE	DESCRIPTION	DATE	CH. NO.	DRAFTS	CHECKER	ENG. APP.
DIMENSIONS ARE IN INCHES							
TOLERANCES ON FRACTIONS ± 1/64 DECIMALS ± .005 ANGLES ± 1/2°							
SCALE FULL (DO NOT SCALE)							
MAXIMUM ALLOWABLE TOLERANCES HAVE BEEN DETERMINED AND ANY DEVIATIONS WILL BE CAUSE FOR REJECTION. REMOVE ALL BURRS & SHARP EDGES							

REF: LD-1017 (8)

REQ. ITEM	PART NO.	DESCRIPTION	SYMBOL
1	.064	THE TECHNICAL MATERIEL CORP. MAMARONECK, NEW YORK	
	ALUMINUM	CHASSIS, POWER SUPPLY	
MATERIAL			
5052-H32			
TYPE & TEMPER HEAT TREAT. SPEC.			
5404 YEL IRIDITE			
FINISH & SPEC. NO.			
ELEC. DES. APP. MECH. DES. APP. SHEET OF			

MS-2794