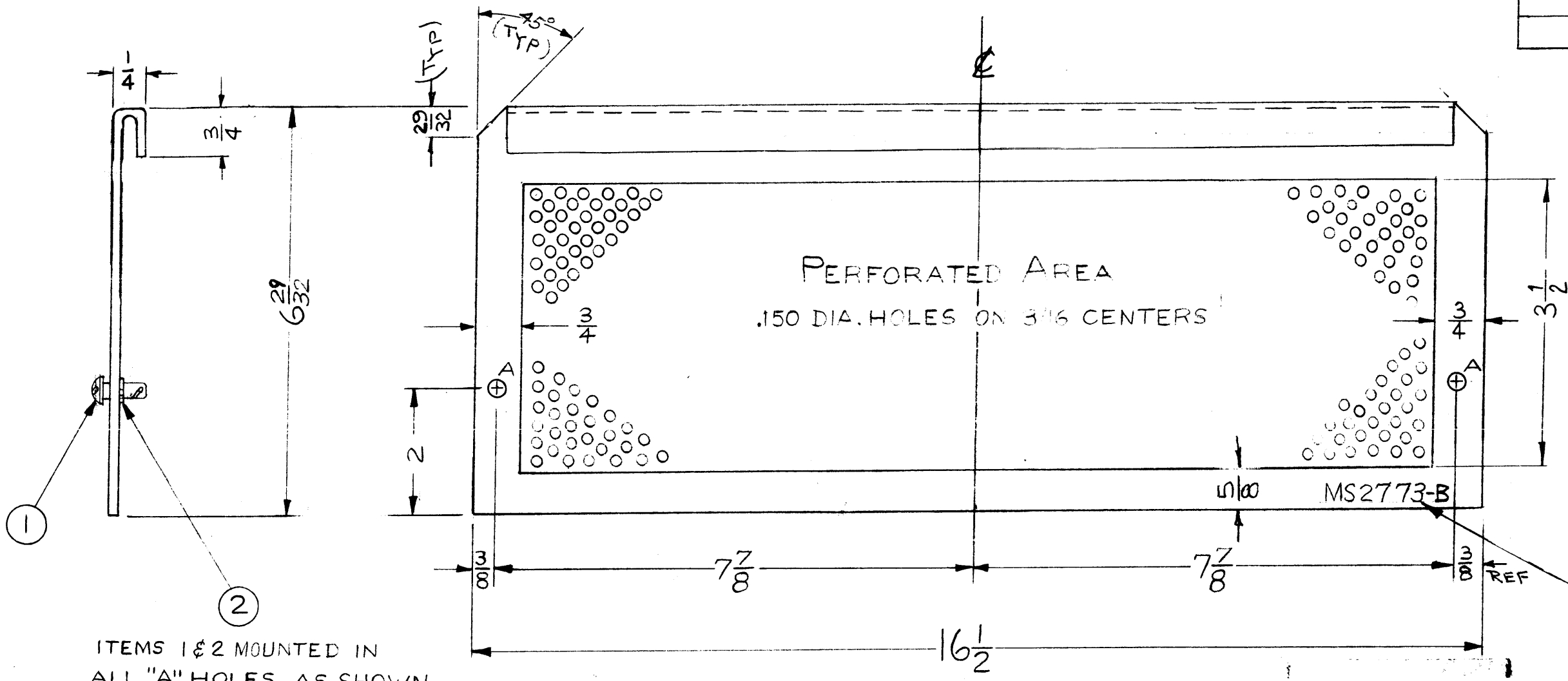


MS-2773 B

THE CONTENTS OF THIS DRAWING ARE THE EXCLUSIVE PROPERTY OF THE TECHNICAL MATERIEL CORP. ITS UNAUTHORIZED USE OR REPRODUCTION IN WHOLE OR IN PART IS STRICTLY FORBIDDEN.

LEGEND		
HOLE	DESCRIPTION	REQ.
A	.250 DIA.	2



ITEMS 1 & 2 MOUNTED IN ALL "A" HOLES AS SHOWN AFTER FINISHING

THE TECHNICAL MATERIEL CORP. MAKES NO CLAIMS TO ANY PATENT RIGHTS OR TO ANY OTHER RIGHTS IN THE DESIGN OR INVENTION OF THIS DRAWING OR TO ANY OTHER RIGHTS IN THE DESIGN OR INVENTION OF THIS DRAWING OR TO ANY OTHER RIGHTS IN THE DESIGN OR INVENTION OF THIS DRAWING.

Property of:
 THE TECHNICAL MATERIEL CORPORATION
 MAMARONECK, NEW YORK

METAL STAMP TMC PART No. 1/8 HIGH GOTHIC

B	BLANK SIZE REF: MS-1775-22, DELETED	4-25-63	8912	942	SG		
A	LIP WAS 1/4	8-23-62	7102	SG			
SYM	DESCRIPTION	DATE	CH. NO.	DRAFTS	CHECKER	ENG. APP.	
UNLESS OTHERWISE SPECIFIED:		SCALE: HALF (DO NOT SCALE)					
DIMENSIONS ARE IN INCHES		MAXIMUM ALLOWABLE TOLERANCES HAVE BEEN DETERMINED AND ANY DEVIATIONS WILL BE CAUSE FOR REJECTION.					
TOLERANCES ON FRACTIONS ± 1/64		DECIMALS ± .005		ANGLES ± 1/2°		REMOVE ALL BURRS AND SHARP EDGES	

REQ. PER UNIT	MODEL	SECTION	ASSY. NO.	DATE
	HFP-1		A-2382-12	11-29-61
USED ON				

2	2	FS-109-3	RING, STUD	
2	1	FS-110-7	STUD, SLOTTED	
REQ.	ITEM	PART NO.	DESCRIPTION	SYMBOL
.064			THE TECHNICAL MATERIEL CORP.	
STOCK SIZE			MAMARONECK, NEW YORK	
PERFORATED ALUMINUM			COVER, TOP	
MATERIAL			REAR SECTION	
5052-H32		C-A	AD	BP
TYPE & TEMPER		HEAT TREAT. SPEC.	DRAWN	CHECKED
S404 YELLOW IRIDITE			RK	RK
FINISH & SPEC. NO.		ELEC. DES. APP.	MECH. DES. APP.	
				MS-2773 B