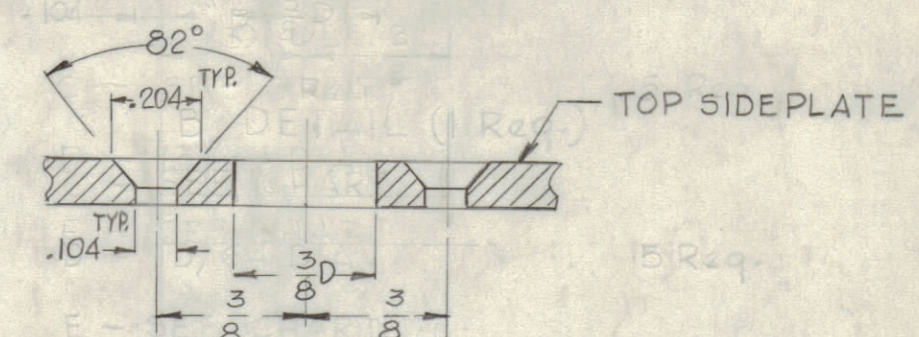
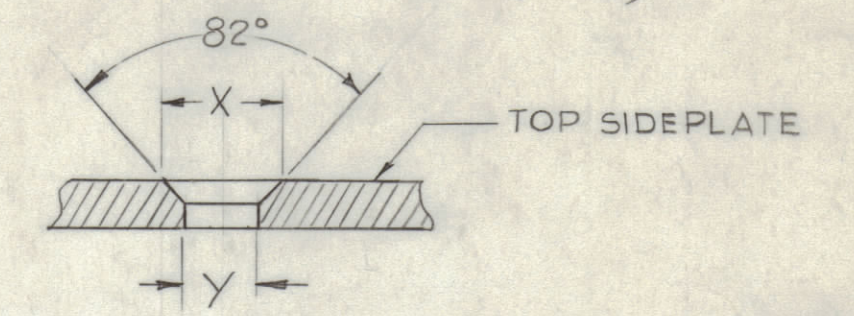


LEGEND		
HOLE	DESCRIPTION	REQ.
A	.221 - .224 DIA.	12
B	SEE DETAIL	1
C	SEE DETAIL	1
D	13/64 DIA.	7
E	SEE CHART & DETAIL	2

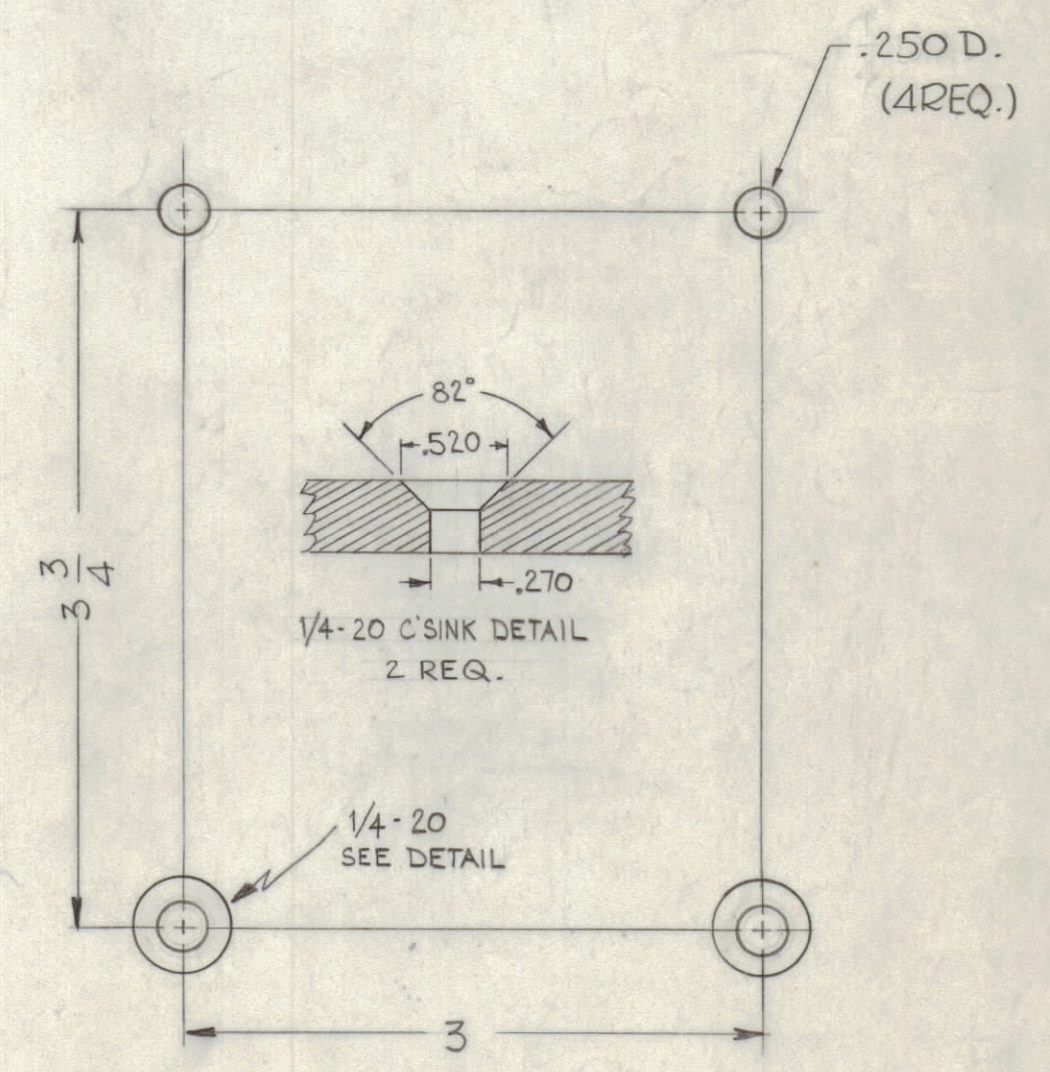


"B" DETAIL (1REQ.)

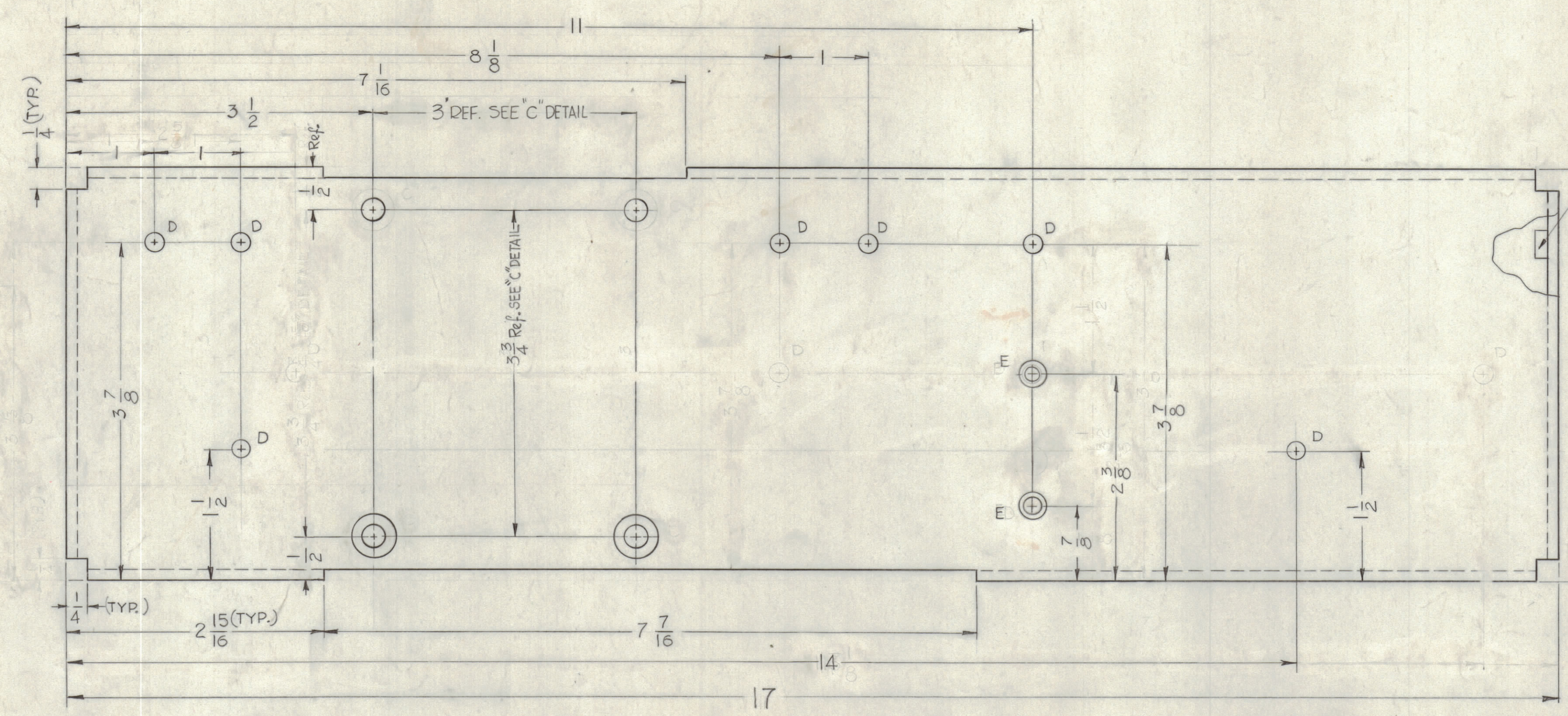
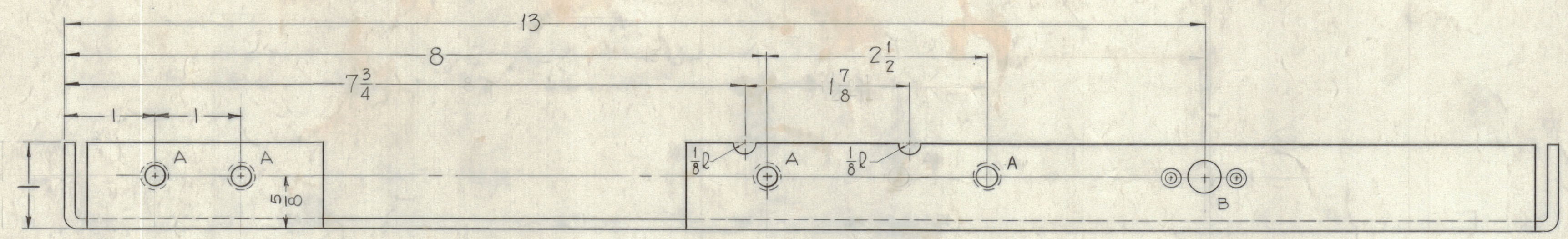


DETAIL OF "E" HOLE

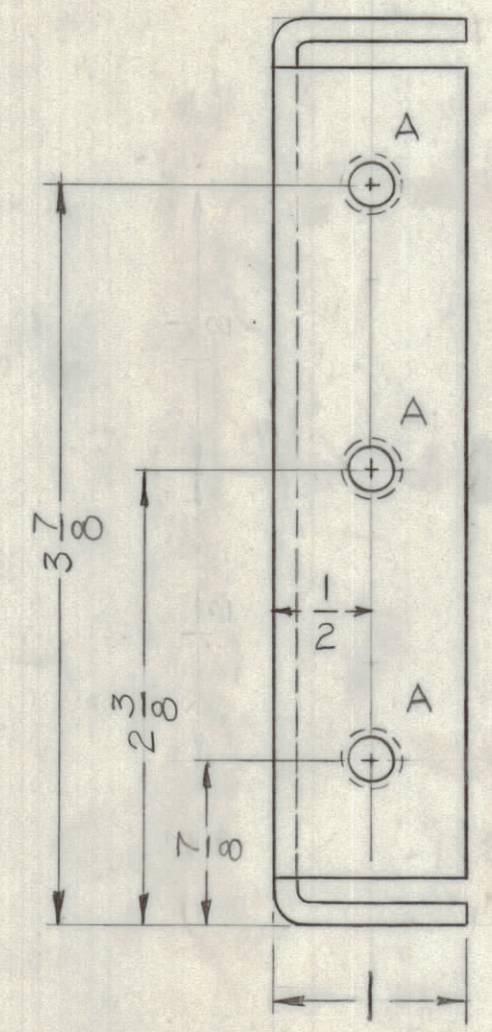
HOLE	SCREW TYPE	DIMENSION		REQ.
		X	Y	
E	DRILL #CTS# 8-32	.337	.169	2



"C" DETAIL



① MOUNT IN ALL "A" HOLES AS SHOWN AFTER FINISH



M5-2770
METAL STAMP TMC PART NO.
1/8 HIGH GOTHIC AS SHOWN

NOTE -
BLANK SIZE 18 3/4 x 6 3/16

NOTICE TO PERSONS RECEIVING THIS DRAWING
THE TECHNICAL MATERIEL CORPORATION claims proprietary right in the material disclosed hereon. This drawing is issued in confidence for engineering information only and may not be reproduced or used to manufacture anything shown hereon without permission from THE TECHNICAL MATERIEL CORPORATION to the user. This drawing is loaned for mutual assistance and is subject to recall at any time.
Property of:
THE TECHNICAL MATERIEL CORPORATION
MAMARONECK, NEW YORK

USE MATERIAL THICKNESS FOR MAX. RADIUS ON ALL BENDS UNLESS OTHERWISE SPECIFIED

SYM	ZONE	DESCRIPTION	DATE	CH. NO.	DRAFTS	CHECKER	ENG. APP.

UNLESS OTHERWISE SPECIFIED:
DIMENSIONS ARE IN INCHES
TOLERANCES ON FRACTIONS ± 1/64 DECIMALS ± .005 ANGLES ± 1/2°

SCALE DO NOT SCALE

MAXIMUM ALLOWABLE TOLERANCES HAVE BEEN DETERMINED AND ANY DEVIATIONS WILL BE CAUSE FOR REJECTION. REMOVE ALL BURRS & SHARP EDGES

REQ. ITEM	PART NO.	DESCRIPTION	SYMBOL
12	1	NT-129-832-6 NUT ROUND, SWAGE TYPE	A
		1/8	
		ALUMINIUM	
		5052-H32	
		TYPE & TEMPER	
		HEAT TREAT. SPEC.	
		3404 YELLOW IRIDIUM	
		FINISH & SPEC. NO.	

THE TECHNICAL MATERIEL CORP.
MAMARONECK, NEW YORK
SIDEPLATE, RIGHT

6DL RUZZO
DRAWN CHECKED FINAL APPROVAL
RK RK MS-2770
ELEC. DES. APP. MECH. DES. APP. SHEET OF

MS-2770