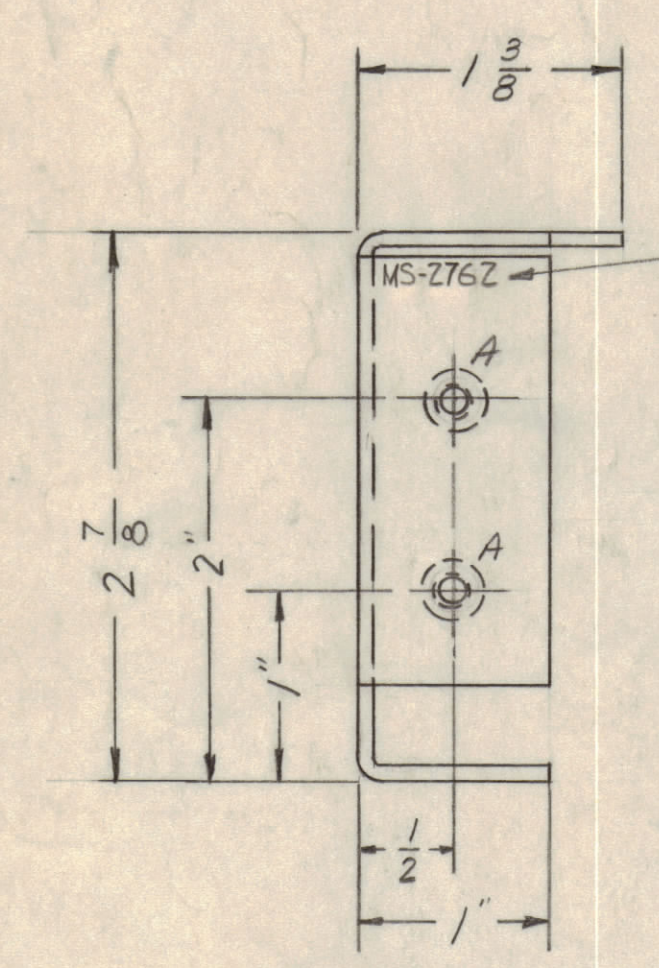
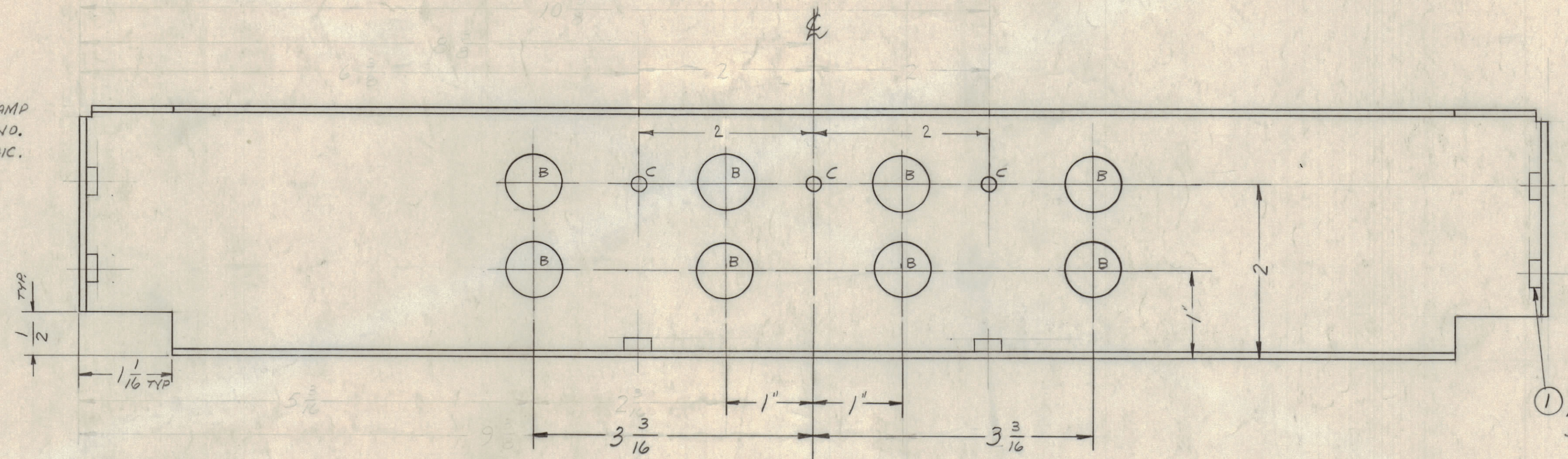


HOLES ~  
 A - .221-.224 DIA. 6 REQ'D.  
 B - 5/8 DIA. 8 REQ'D.  
 C - 5/32 DIA. 3 REQ'D.

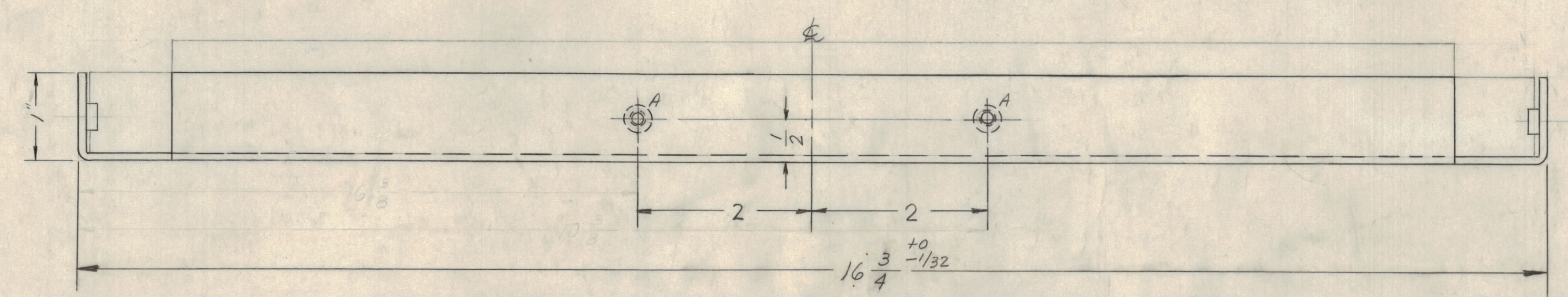


METAL STAMP  
 TMC PART NO.  
 1/8 HIGH GOTHIC.

OPPOSITE SIDE  
 IDENTICAL



1 MOUNT ITEM 1 IN  
 ALL "A" HOLES AS  
 SHOWN.



NOTE:  
 BLANK SIZE 15/8 X 5

NOTICE TO PERSONS RECEIVING THIS DRAWING  
 THE TECHNICAL MATERIEL CORPORATION claims  
 proprietary right in the material disclosed herein.  
 This drawing is issued in confidence for engineering  
 information only and may not be reproduced or used  
 to manufacture anything shown herein without per-  
 mission from THE TECHNICAL MATERIEL CORPOR-  
 ATION to the user. This drawing is loaned for mutual  
 assistance and is subject to recall at any time.  
 Property of:  
 THE TECHNICAL MATERIEL CORPORATION  
 MAMARONECK, NEW YORK

USE MATERIAL THICKNESS FOR MAX. RADIUS  
 ON ALL BENDS UNLESS OTHERWISE SPECIFIED

MOUNT INSERTS AFTER FINISHING

REF. ~ LD-1036(B)

UNLESS OTHERWISE SPECIFIED DIMENSIONS ARE IN INCHES AND INCLUDE CHEMICALLY APPLIED OR PLATED FINISHES	
DECIMALS 1/16 ± .005	FRACTIONS 1/16 ± .005
TOLERANCES ± .005	ANGLES ± 1/2°

SYM	ZONE	DESCRIPTION	DATE	CH. NO.	DRAFTS	CHECKER	ENG. APP.
UNLESS OTHERWISE SPECIFIED: DIMENSIONS ARE IN INCHES			SCALE DO NOT SCALE				
TOLERANCES ON FRACTIONS ± 1/64 DECIMALS ± .005 ANGLES ± 1/2°			MAXIMUM ALLOWABLE TOLERANCES HAVE BEEN DETERMINED AND ANY DEVIATIONS WILL BE CAUSE FOR REJECTION. REMOVE ALL BURRS & SHARP EDGES				

6	1	NT-129-B32-4	NUT, ROUND, SWAGE TYPE	A
REQ. ITEM	PART NO.	DESCRIPTION		SYMBOL
	.081 THICK	KOHN		
MATERIAL		THE TECHNICAL MATERIEL CORP. MAMARONECK, NEW YORK		
ALUMINUM		CHASSIS, FUSEHOLDER, MTG.		
1	HFP-1	A-2382-4	11-21-61	
REQ. PER UNIT	MODEL	SECTION	ASSY. NO.	DATE
	5052-H 32			
TYPE & TEMPER		HEAT TREAT. SPEC.		
S404-YEL. IRIDITE		RK RK MS-2762		
FINISH & SPEC. NO.		ELEC. DES. APP. MECH. DES. APP. SHEET OF		

MS-2762 2