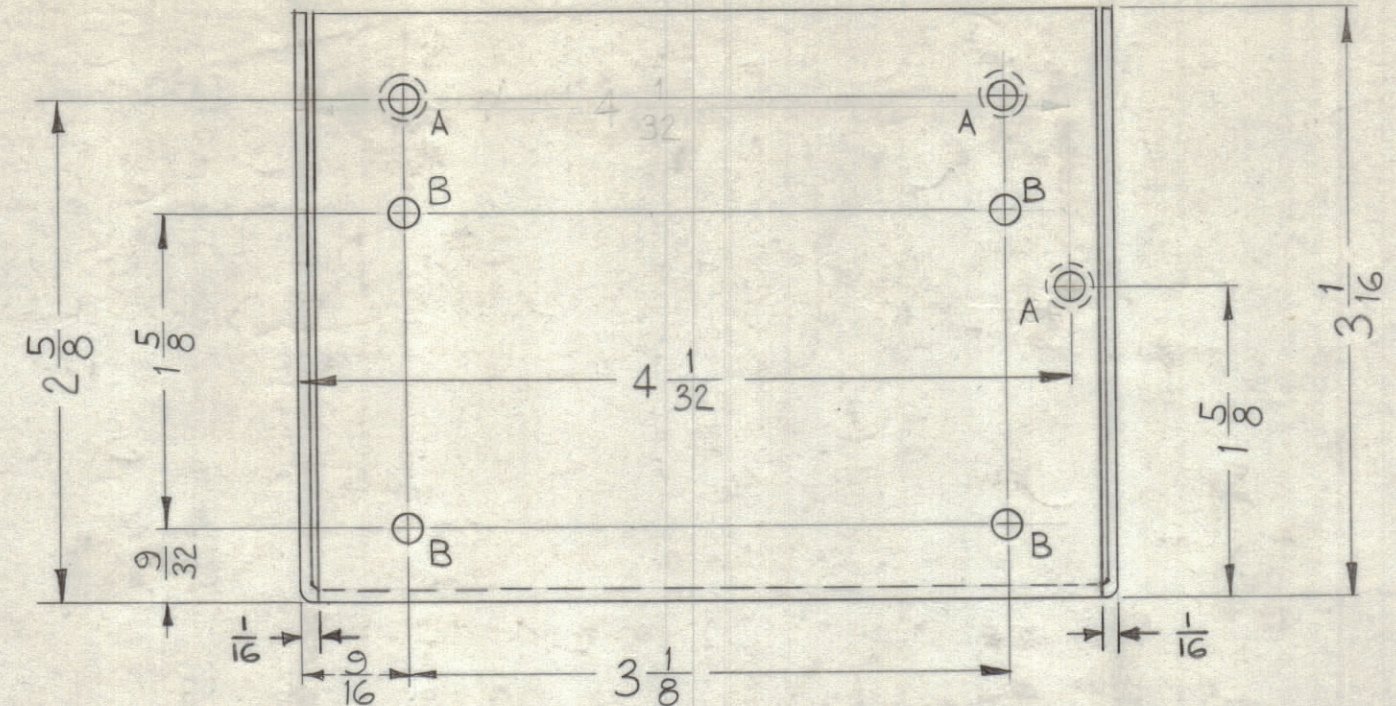


USED ON		
REQ PER UNIT	MODEL	TMC PART #
1	AFC-2	MS-2757-1
1	AFC-2	MS-2757-2
2	AFC-2A	MS-2757-2
2	AFC-3	MS-2757-2

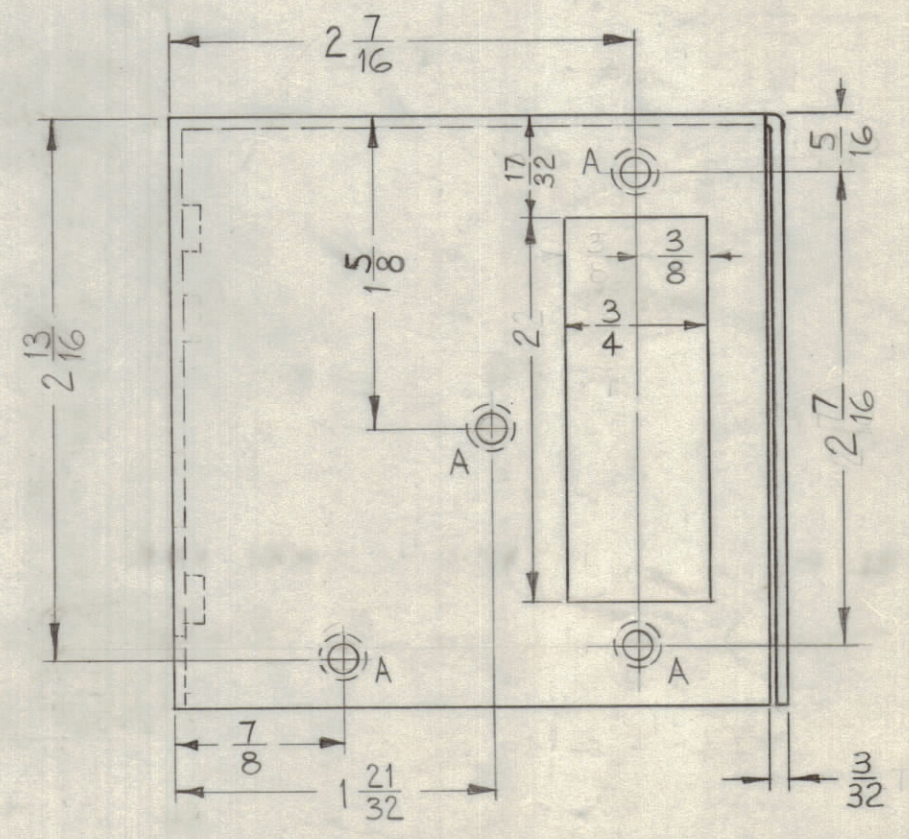
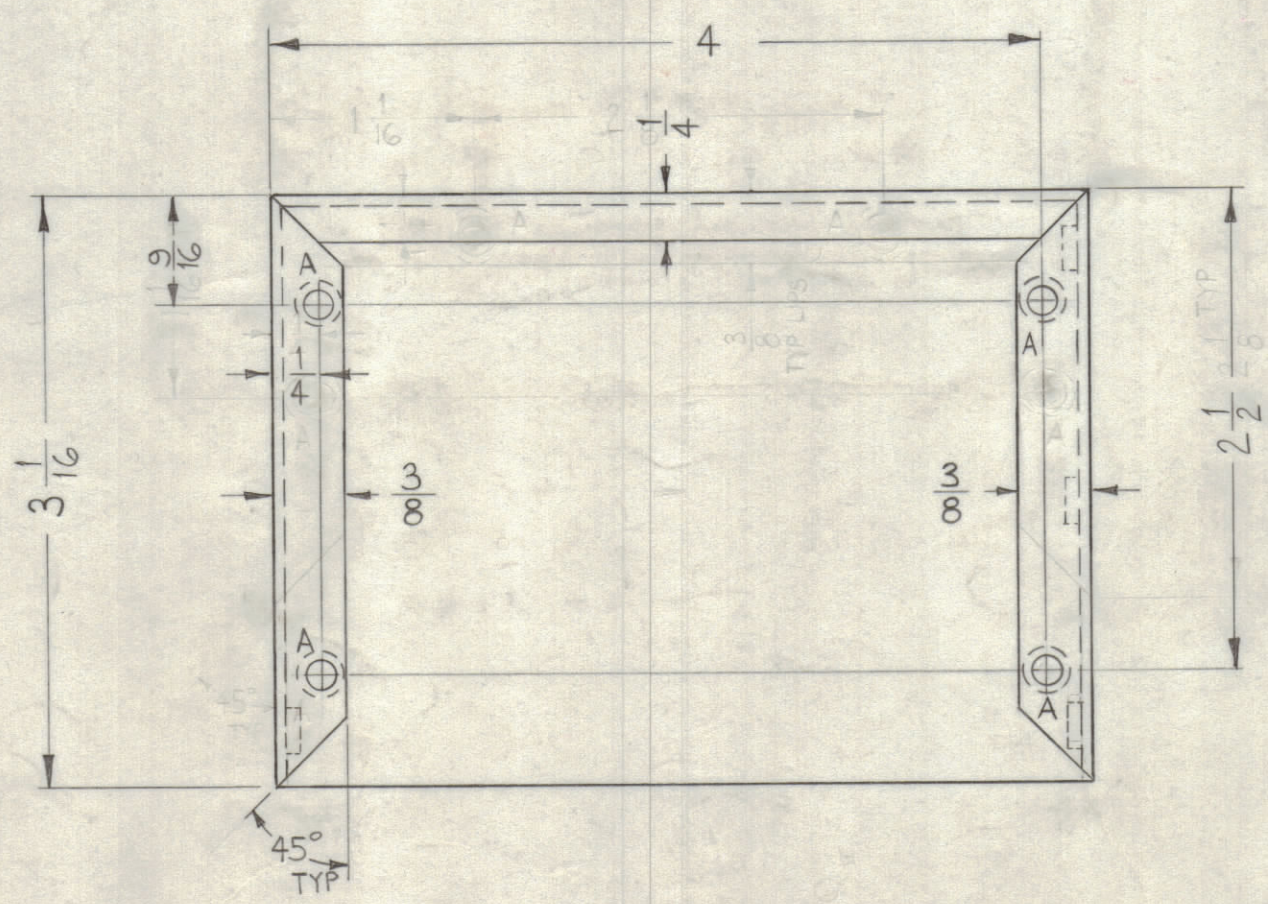
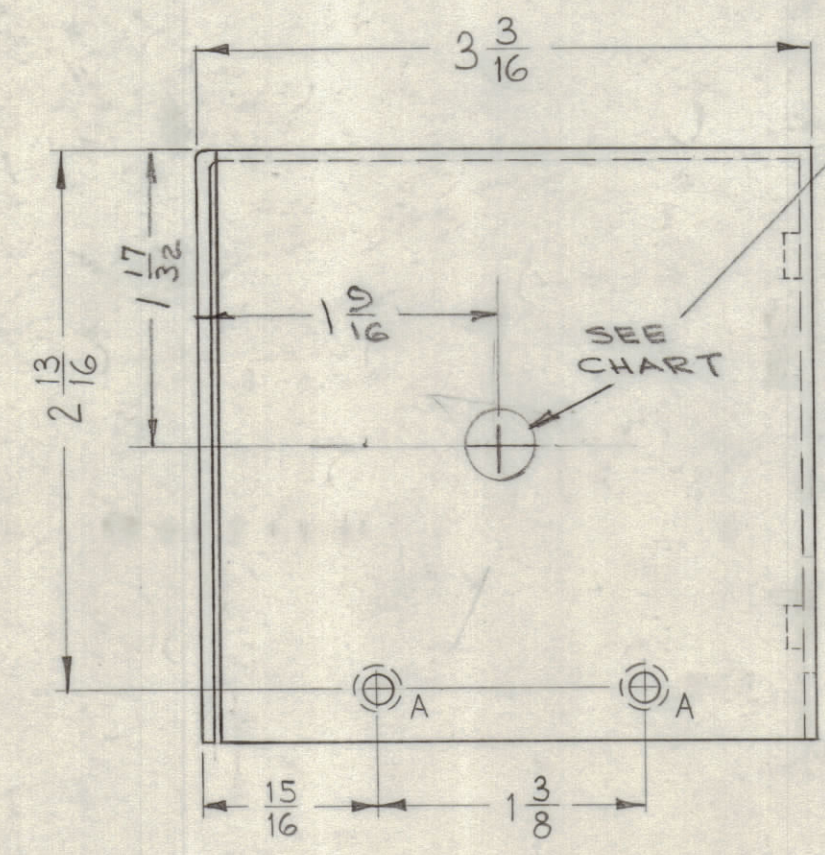


A ~ .161 - .164 DIA. 13 REQ.
 B ~ $\frac{.15}{32}$ DIA. 4 "

METAL STAMP TMC PART NO. AS SHOWN $\frac{1}{8}$ HIGH GOTHIC.

MOUNT ITEM 1 IN ALL "A" HOLES AS SHOWN AFTER FINISHING.

TMC PART NO	ADJUST. HOLE
MS-2757-1	W/ 3/8 D. HOLE
MS-2757-2	W/O HOLE



UNLESS OTHERWISE SPECIFIED DIMENSIONS ARE IN INCHES AND INCLUDE CHEMICALLY APPLIED OR PLATED FINISHES

DECIMALS X ± .05 .XX ± .01 .XXX ± .005	FRACTIONS ± 1/64 ANGLES ± 0° 30'
---	---

CUT HERE GUARANTEED 2-66

13	1	NT-129-440-4	NUT, ROUND, SWAGE TYPE	A
REQ. ITEM	PART NO.		DESCRIPTION	SYMBOL
	.064		THE TECHNICAL MATERIEL CORP. MAMARONECK, NEW YORK	
	ALUMINUM		HOUSING, OVEN	
	5052-H32		4-12-62	
	S404 YEL. IRIDITE		11-16-61	
	FINISH & SPEC. NO.		ELEC. DES. APP.	MECH. DES. APP.
	SHEET OF		MS-2757	B

SYM	ZONE	DESCRIPTION	DATE	CH. NO.	DRAFTS	CHECKER	ENG. APP.
B	G3.5 B1	1/16 DIM. ADDED (2 PLACES) TYP. DELE FROM 3/32 DIM. ON R. SIDE VIEW	9.1.64	12264	hrs	MP	202
A	IB	ADDED 3/32 TYP. DIM. PICTORIAL CHANGED TO AGREE.	7-19-63	9567	AK.	MP	MPB

UNLESS OTHERWISE SPECIFIED:
 DIMENSIONS ARE IN INCHES
 TOLERANCES ON
 FRACTIONS ± 1/64 DECIMALS ± .005 ANGLES ± 1/2°

SCALE DO NOT SCALE

MAXIMUM ALLOWABLE TOLERANCES HAVE BEEN DETERMINED AND ANY DEVIATIONS WILL BE CAUSE FOR REJECTION. REMOVE ALL BURRS & SHARP EDGES