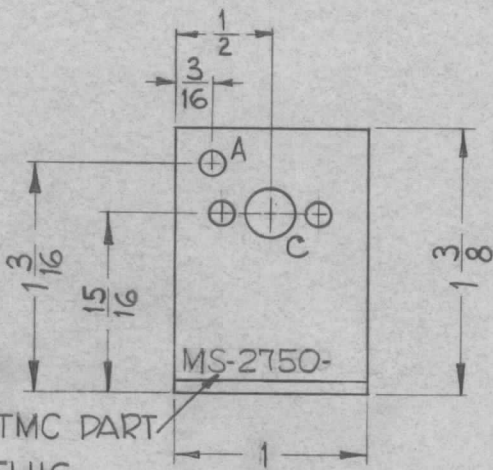


THE CONTENTS OF THIS DRAWING ARE THE EXCLUSIVE PROPERTY OF THE TECHNICAL MATERIEL CORP. ITS UNAUTHORIZED USE OR REPRODUCTION IN WHOLE OR IN PART IS STRICTLY FORBIDDEN.

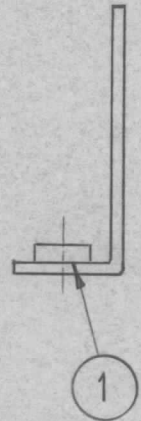
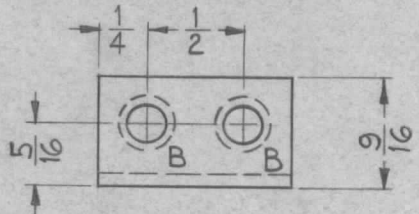
REQ. PER UNIT
1

USED ON		
MODEL	ASS'Y. NO.	DATE
SBS-1		11-9-61

MS-2750

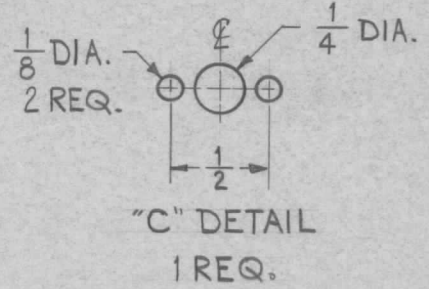


METAL STAMP TMC PART
NO. $\frac{1}{8}$ " HIGH GOTHIC
AS SHOWN.



MOUNT ITEM ① IN ALL "B"
HOLES AS SHOWN
AFTER FINISHING.

A ~ $\frac{1}{8}$ DIA. 1 REQ.
B ~ .191-.194 DIA. 2 REQ.



USE MATERIAL THICKNESS FOR MAX. RADIUS
ON ALL BENDS UNLESS OTHERWISE SPECIFIED

MOUNT INSERTS AFTER FINISHING

UNLESS OTHERWISE SPECIFIED DIMENSIONS ARE IN INCHES AND INCLUDE CHEMICALLY APPLIED OR PLATED FINISHES	
DECIMALS .X ± .05 .XX ± .01 .XXX ± .005	FRACTIONS ± 1/64 ANGLES ± 0° 30'

CUT HERE
GUARANTEED
2-66

2	1	NT-129-632-4	NUT, ROUND, SWAGE TYPE		B		
REQ.	ITEM	PART NO.	DESCRIPTION		SYMBOL		
		.064	THE TECHNICAL MATERIEL CORP.				
		STOCK SIZE	MAMARONECK, NEW YORK				
		ALUMINUM	BRACKET, MOUNTING				
		MATERIAL	POTENTIOMETER (RIGHT SIDE)				
SYM	DESCRIPTION	DATE	CH. NO.	DRAFTS	CHECKER	ENG. APP.	
UNLESS OTHERWISE SPECIFIED: DIMENSIONS ARE IN INCHES. TOLERANCES ON FRAC. ± 1/64 DEC. ± .005 ANGLES ± 1/2°		SCALE: FULL (DO NOT SCALE)		5052-H32	M.A.F.	J.H.	P.S.M.
MAXIMUM ALLOWABLE TOLERANCES HAVE BEEN DETERMINED AND ANY DEVIATIONS WILL BE CAUSE FOR REJECTION. REMOVE ALL BURRS AND SHARP EDGES		TYPE & TEMPER	HEAT TREAT. SPEC.	DRAWN	CHECKED	FINAL APPROVAL	
		S404 YEL IRIDITE				MS-2750	
		FINISH & SPEC. NO.	ELEC. DES. APP.	MECH. DES. APP.			