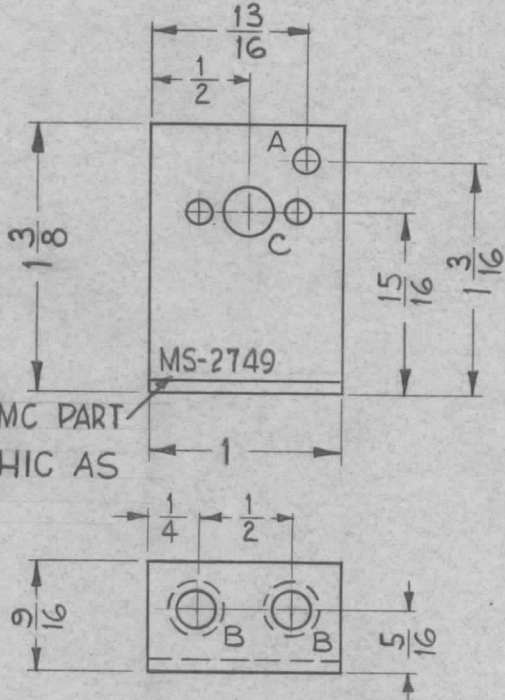


THE CONTENTS OF THIS DRAWING ARE THE EXCLUSIVE PROPERTY OF THE TECHNICAL MATERIEL CORP. ITS UNAUTHORIZED USE OR REPRODUCTION IN WHOLE OR IN PART IS STRICTLY FORBIDDEN.

REQ. PER UNIT  
1

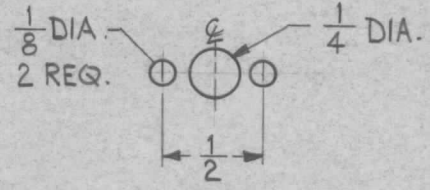
USED ON		
MODEL	ASS'Y. NO.	DATE
SBS-1		11-8-61

MS-2749



METAL STAMP TMC PART NO.  $\frac{1}{8}$ " HIGH GOTHIC AS SHOWN.

A ~  $\frac{1}{8}$ " DIA. 1 REQ.  
B ~ .191-.194 DIA. 2 REQ.



"C" DETAIL  
1 REQ.



1 MOUNT ITEM ① IN ALL "B" HOLES AS SHOWN AFTER FINISHING.

USE MATERIAL THICKNESS FOR MAX. RADIUS ON ALL BENDS UNLESS OTHERWISE SPECIFIED

MOUNT INSERTS AFTER FINISHING

UNLESS OTHERWISE SPECIFIED DIMENSIONS ARE IN INCHES AND INCLUDE CHEMICALLY APPLIED OR PLATED FINISHES		
DECIMALS	TOLERANCES	FRACTIONS
.X ± .05		± 1/64
.XX ± .01		ANGLES
.XXX ± .005		± 0° 30'

CUT HERE GUARANTEED 2-66

REQ.	ITEM	PART NO.	DESCRIPTION	SYMBOL
2	1	NT-129-G32-4	NUT, ROUND, SWAGE TYPE	
		.064	THE TECHNICAL MATERIEL CORP.	
		STOCK SIZE	MAMARONECK, NEW YORK	
		ALUMINUM	BRACKET, MOUNTING	
		MATERIAL	POTENTIOMETER (LEFT SIDE)	
		5052-H32	W.A.F.	J.W.
		TYPE & TEMPER	HEAT TREAT. SPEC.	DRAWN
		S404 YEL IRIDITE		CHECKED
		FINISH & SPEC. NO.	ELEC. DES. APP.	MECH. DES. APP.
				MS-2749

UNLESS OTHERWISE SPECIFIED: DIMENSIONS ARE IN INCHES. TOLERANCES ON  
FRAC. ± 1/64 DEC. ± .005 ANGLES ± 1/2°

SCALE: FULL (DO NOT SCALE).  
MAXIMUM ALLOWABLE TOLERANCES HAVE BEEN DETERMINED AND ANY DEVIATIONS WILL BE CAUSE FOR REJECTION. REMOVE ALL BURRS AND SHARP EDGES