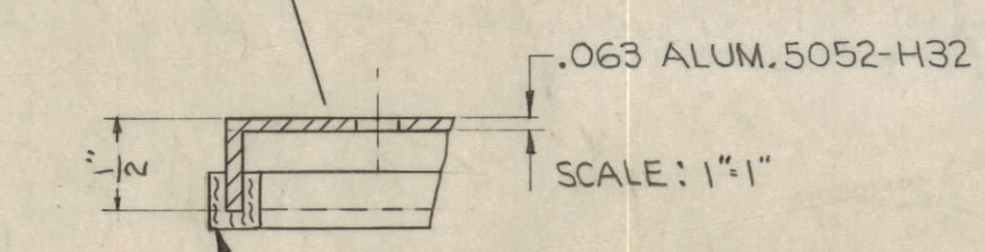
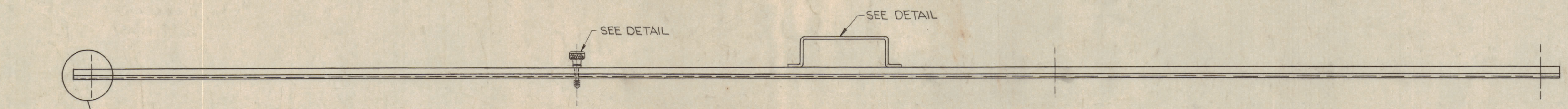
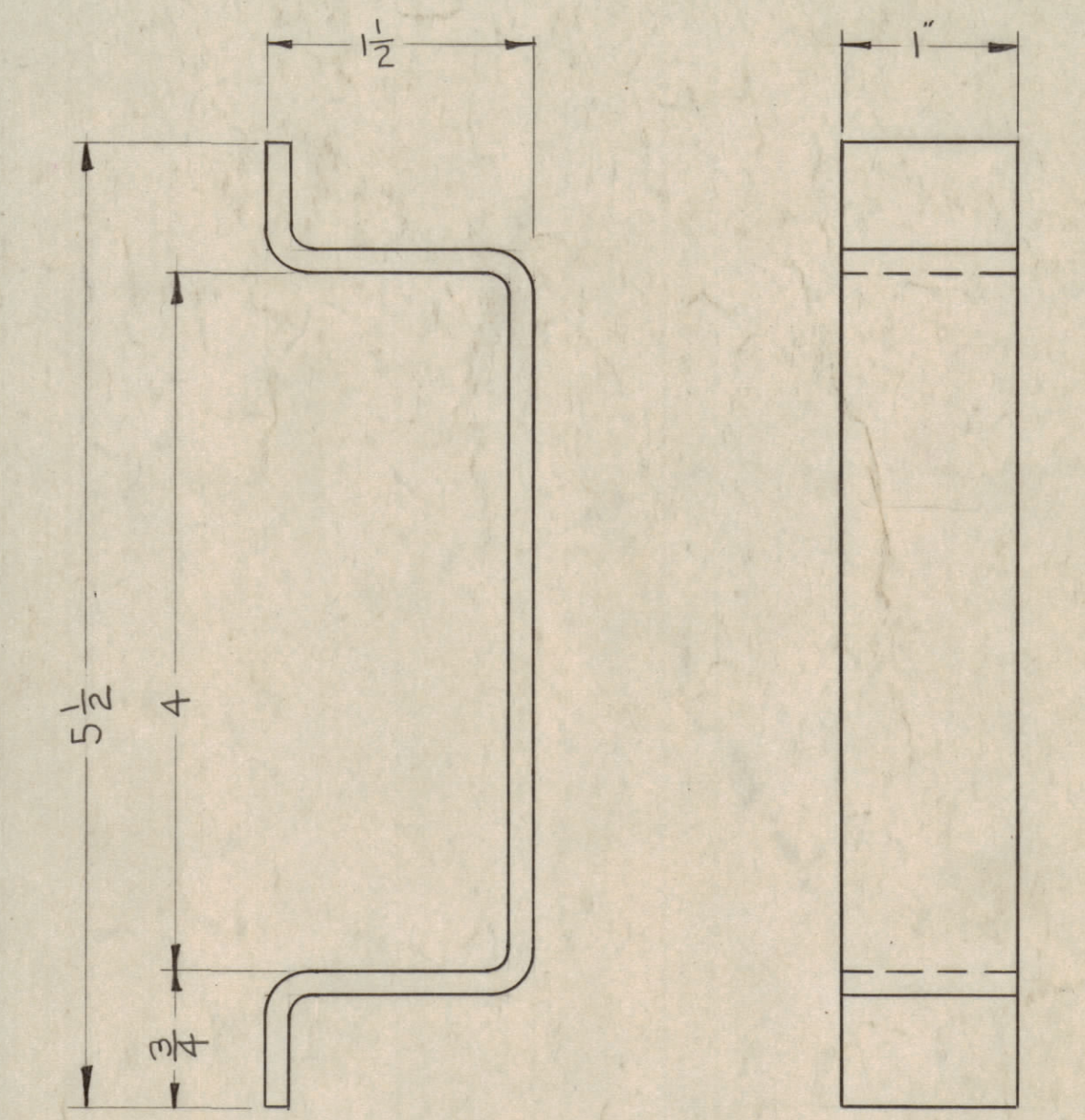


ALL CORNERS ARE WELDED AND GROUND SMOOTH

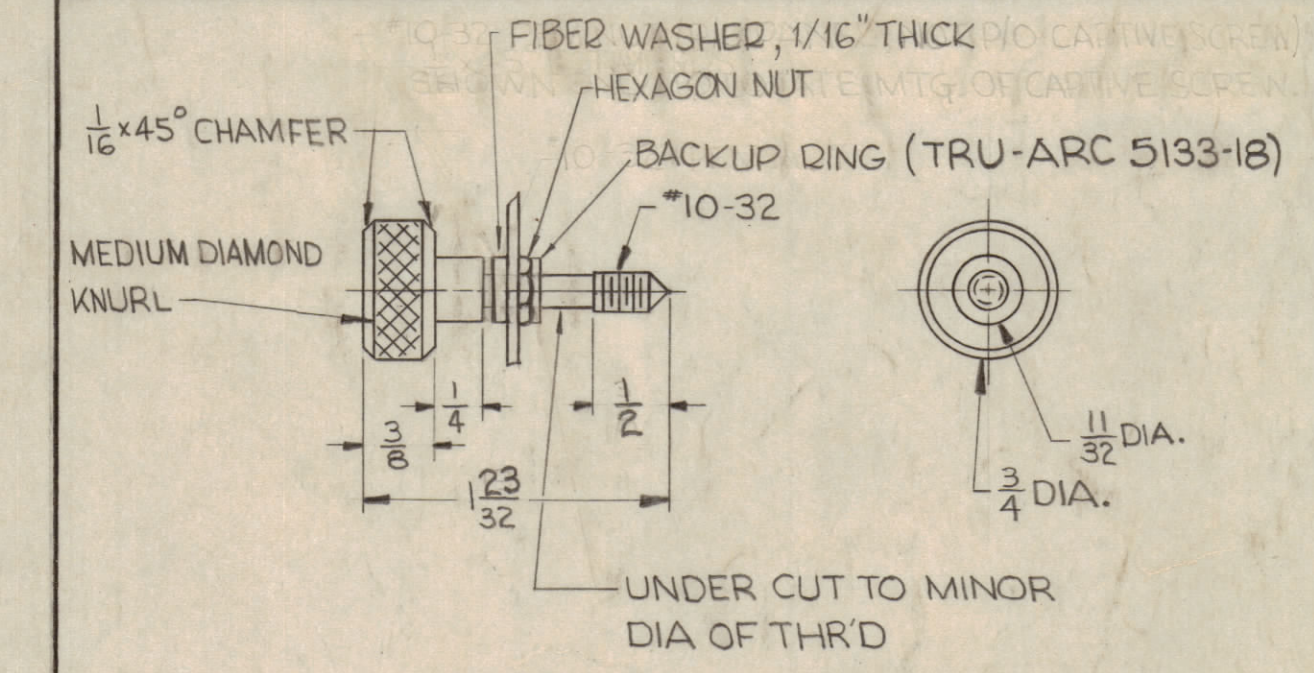
CREASE UP



FINISH NOTE:  
S404 IRIDITE  
S114 ZINC CHROMATE  
S520 BLUE-GRAY TEXT. PAINT



HANDLE  
HANDLE TO BE TACK-WELDED SECURELY TO PANEL .125 ALUM. 5052-H32 (2 REQ.)



CAPTIVE SCREW AND NUT DETAIL (9 REQ.)

HOLE:  
A - .203 DIA. 9 HOLES, FOR CAPTIVE SCREW

D	ADDED SHEET 2 AND -2-3	10-9-70	00365	GE	RO	VEA	
C	DIM. CHG. 10 3/16 TO 15 3/16, 14 3/16 TO 15 3/16	8-13-69	18319	GE	RO	FB	
B	CHG'D "A" HOLE LOC. DIM. FR. 15 3/16 TO 16 3/16 & 14 3/16	11-23-66	17311	RME	STY	OS	
A	CREASE & FINISH NOTES ADD. "A" WAS 5/16 DIA. 1" HOLE DELE., 2" HOLE RELOC. TO 3/32 DIA. DIA.	5-7-64	11373	WB	STY	OS	
SYM	ZONE	DESCRIPTION	DATE	CH. NO.	DRAFTS	CHECKER	ENG. APP.
UNLESS OTHERWISE SPECIFIED: DIMENSIONS ARE IN INCHES			SCALE 4"=1'-0"				
TOLERANCES ON FRACTIONS ± 1/64 DECIMALS ± .005 ANGLES ± 1/2°			MAXIMUM ALLOWABLE TOLERANCES HAVE BEEN DETERMINED AND ANY DEVIATIONS WILL BE CAUSE FOR REJECTION. REMOVE ALL BURRS & SHARP EDGES				

NOTICE TO PERSONS RECEIVING THIS DRAWING:  
THE TECHNICAL MATERIEL CORPORATION claims proprietary right in the material disclosed herein. This drawing is issued in confidence for engineering information only and may not be reproduced or used to manufacture anything shown hereon without permission from THE TECHNICAL MATERIEL CORPORATION to the user. This drawing is loaned for mutual assistance and is subject to recall at any time.  
Property of:  
THE TECHNICAL MATERIEL CORPORATION  
MAMARONECK, NEW YORK

1	GPT-40KH	AX291			
1	GPT-10KZ	AX292		10-11-61	
REQ. PER UNIT	MODEL	SECTION	ASS'Y. NO.	DATE	
USED ON					

REQ. ITEM	PART NO.	DESCRIPTION	SYMBOL
	.063	ALUMINUM	
THE TECHNICAL MATERIEL CORP. MAMARONECK, NEW YORK			
PANEL REAR (POWER SUPPLY, MAIN FRAME)			
5052-H32			
TYPE & TEMPER	HEAT TREAT. SPEC.		
SEE NOTE			
FINISH & SPEC. NO.			
		ELEC. DES. APP.	MECH. DES. APP.
			SHEET 1 OF 2

MS-2748 D