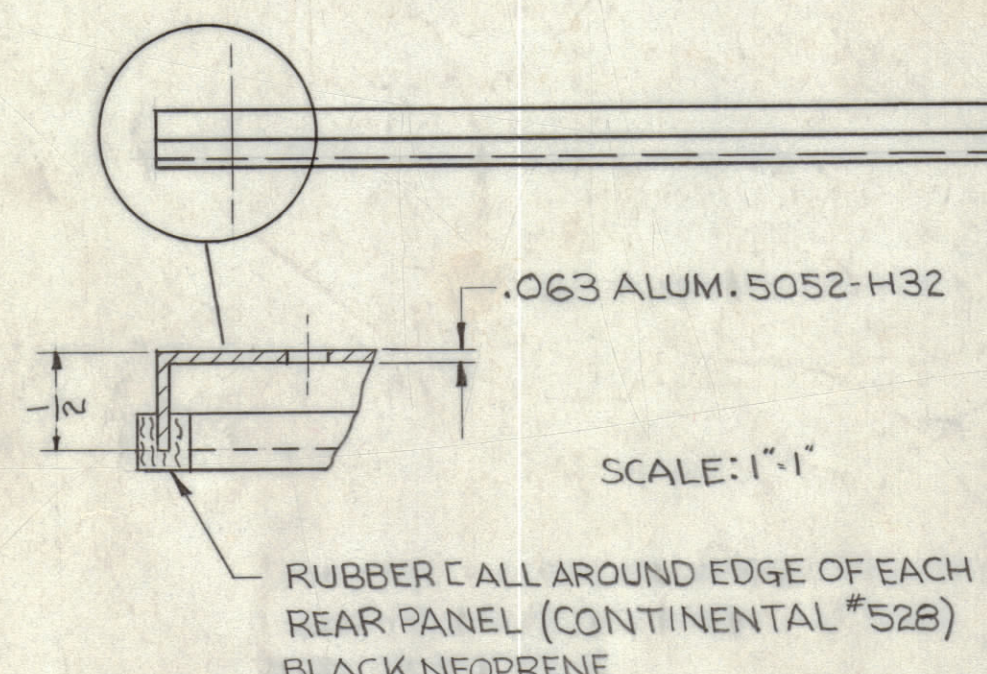


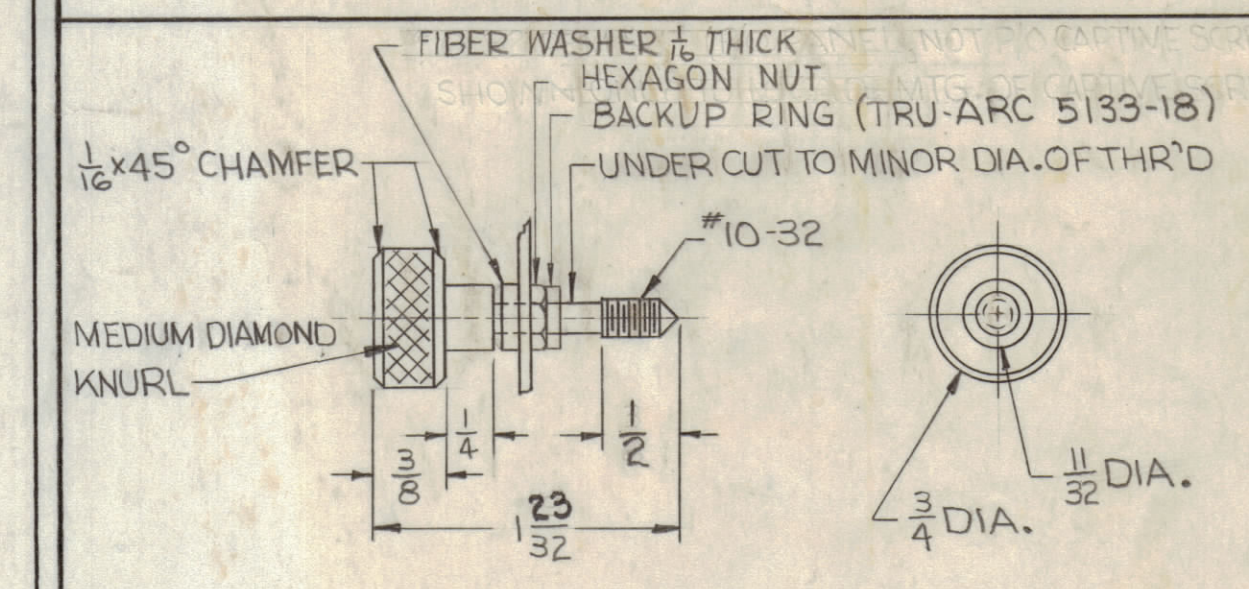
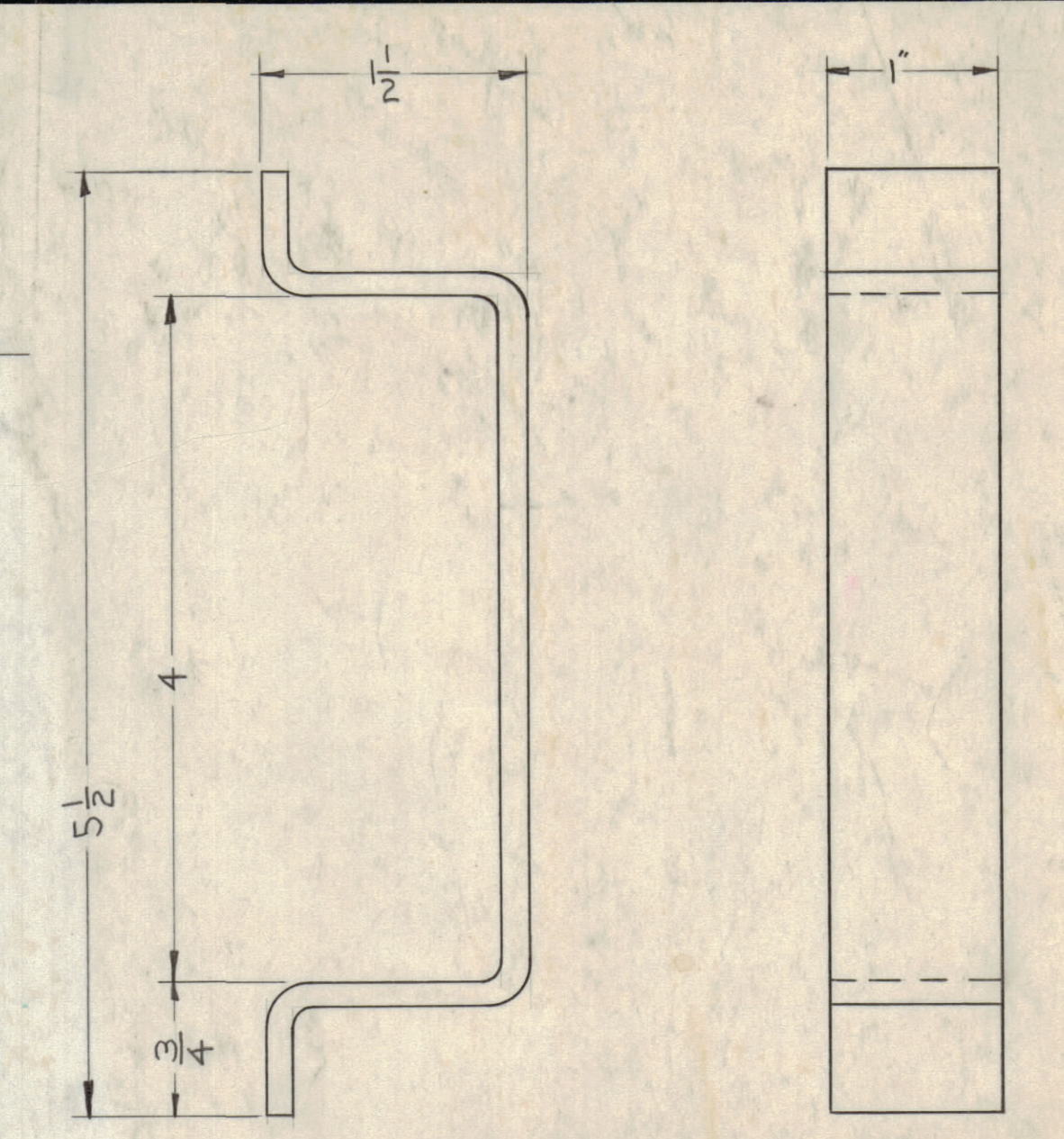
ALL CORNERS ARE WELDED AND GROUND SMOOTH



SEE DETAIL

SEE DETAIL

CREASE UP



HOLE: A - .203 DIA. 8 HOLES, FOR CAPTIVE SCREW

FINISH NOTE:  
S404 TRIDITE  
S114 ZINC CHROMATE PRIMER  
S520 BLUE-GRAY TEXT. PAINT

NOTICE TO PERSONS RECEIVING THIS DRAWING  
THE TECHNICAL MATERIEL CORPORATION claims proprietary right in the material disclosed herein. This drawing is issued in confidence for information only and may not be re-used or used to manufacture anything shown herein without permission from THE TECHNICAL MATERIEL CORPORATION. This drawing is intended for manufacturing assistance and is subject to recall at any time.  
PROPERTY OF THE TECHNICAL MATERIEL CORPORATION  
MAMARONECK, NEW YORK

UNLESS OTHERWISE SPECIFIED DIMENSIONS ARE IN INCHES AND INCLUDE CHEMICALLY APPLIED OR PLATED FINISHES  
TOLERANCES  
DECIMALS ± .005 FRACTIONS ± 1/64 ANGLES ± .01  
ANGLES ± .01 ANGLES ± .01

SYM	ZONE	DESCRIPTION	DATE	CH. NO.	DRAFTS	CHECKER	ENG. APP.
A		CREASE & FINISH NOTES ADD. HOLE 'A' WAS 3/16 DIA. 25/32 ADD. MAT. & STOCK SIZE ADD. 1/2 TYP. WAS 3 TYP.	5.6.64	11373	WJB	QUS	QUS
UNLESS OTHERWISE SPECIFIED:			SCALE 1/2"=1"-0				
DIMENSIONS ARE IN INCHES			MAXIMUM ALLOWABLE TOLERANCES HAVE BEEN DETERMINED AND ANY DEVIATIONS WILL BE CAUSE FOR REJECTION. REMOVE ALL BURRS & SHARP EDGES				
TOLERANCES ON			A				
FRACTIONS ± 1/64			DECIMALS ± .005				
			ANGLES ± 1/2°				

1	GPT-10KZ	AX 292			
1	GPT-40KH	AX 291		10-13-61	
REQ. PER UNIT	MODEL	SECTION	ASSY. NO.	DATE	
					USED ON

REQ. ITEM	PART NO.	DESCRIPTION	SYMBOL
	.063	THE TECHNICAL MATERIEL CORP. MAMARONECK, NEW YORK	
	STOCK SIZE	PANEL REAR (AUX.)	
	ALUMINUM		
	MATERIAL		
	5052-H32		
	TYPE & TEMPER	HEAT TREAT. SPEC.	
	SEE NOTE		
	FINISH & SPEC. NO.		
		ELEC. DES. APP.	MECH. DES. APP.
			MS-2746 A
		SHEET	OF

MS-2746 A