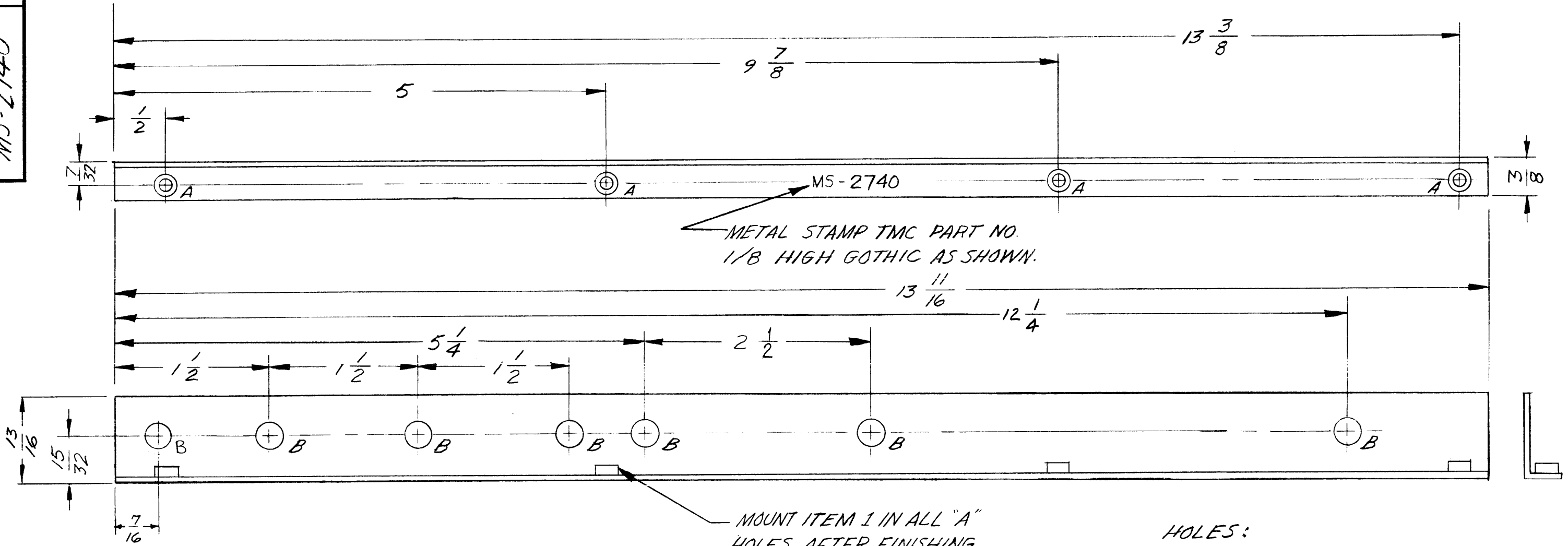


MS-2740



METAL STAMP TMC PART NO. 1/8 HIGH GOTHIC AS SHOWN.

MOUNT ITEM 1 IN ALL "A" HOLES AFTER FINISHING

HOLES:
 A - .161-.164 DIA. 4 REQ.
 B - 1/4 DIA. 7 REQ.

USE MATERIAL THICKNESS FOR MAX. RADIUS ON ALL BENDS UNLESS OTHERWISE SPECIFIED

PROPERTY OF THE TECHNICAL MATERIEL CORPORATION
 MAMARONECK, NEW YORK

SYM	DESCRIPTION	DATE	CH. NO.	DRAFTS	CHECKER	ENG. APP.
UNLESS OTHERWISE SPECIFIED:						
DIMENSIONS ARE IN INCHES						
TOLERANCES ON FRACTIONS ± 1/64 DECIMALS ± .005 ANGLES ± 1/2°						
SCALE: MAXIMUM ALLOWABLE TOLERANCES HAVE BEEN DETERMINED AND ANY DEVIATIONS WILL BE CAUSE FOR REJECTION. REMOVE ALL BURRS AND SHARP EDGES						

REQ. PER UNIT	MODEL	SECTION	ASS'Y. NO.	DATE
1	AFC-2			11-3-61
USED ON				

4	1	NT-129-440-4	NUT, ROUND, SWAGE TYPE	A
REQ.	ITEM	PART NO.	DESCRIPTION	SYMBOL
		.064	THE TECHNICAL MATERIEL CORP. MAMARONECK, NEW YORK	
STOCK SIZE			BRACKET, ANGLE (RF SHIELD # 2 MAIN CHASSIS)	
MATERIAL			ALUMINUM	
5052-H32			wh	J. De
TYPE & TEMPER	HEAT TREAT. SPEC.	DRAWN	CHECKER	FINAL APPROVAL
5-404 YEL. IRIDITE			4wf	MS-2740
FINISH & SPEC. NO.		ELEC. DES. APP.	MECH. DES. APP.	