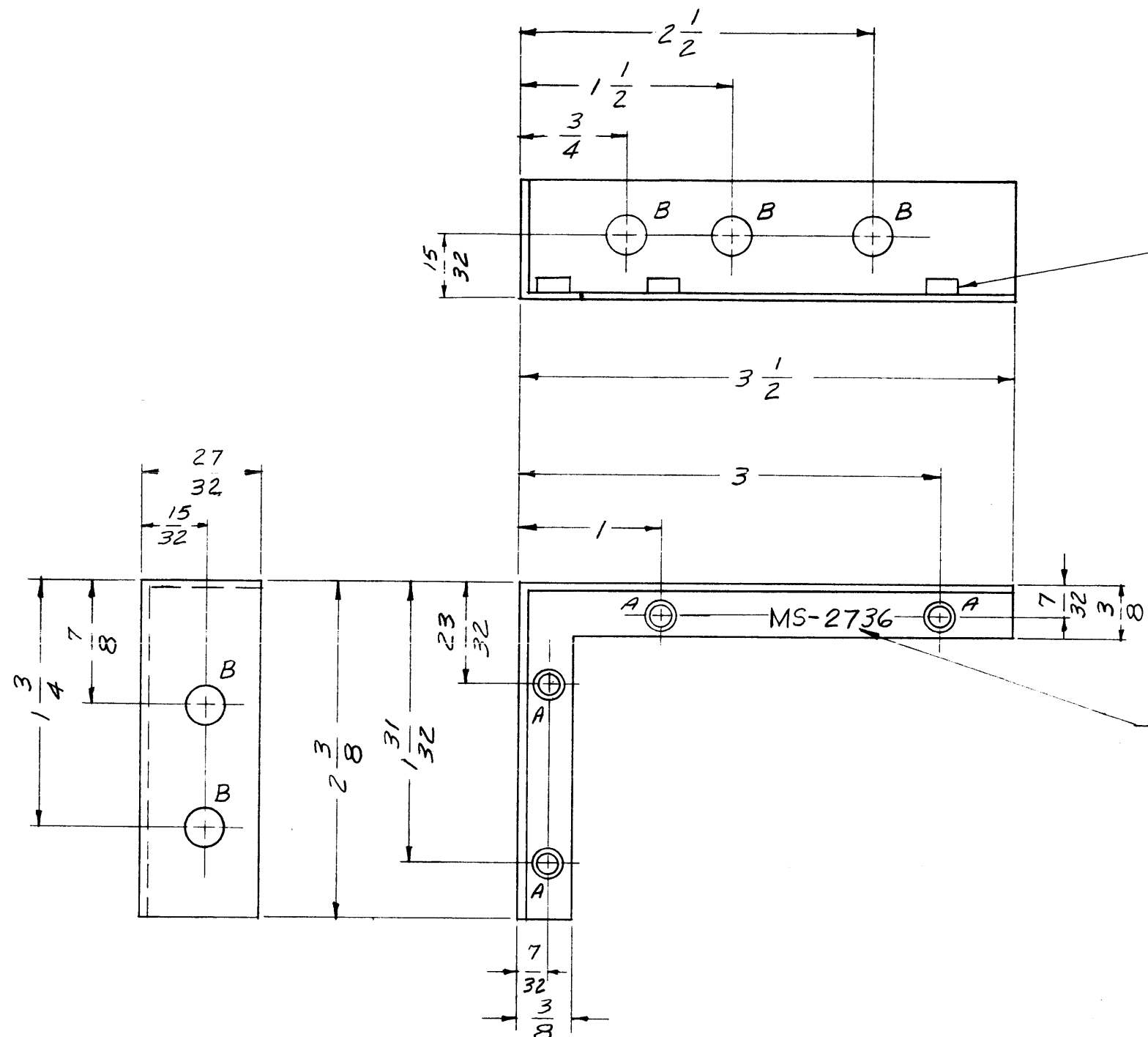


THE CONTENTS OF THIS DRAWING ARE THE EXCLUSIVE PROPERTY OF THE TECHNICAL MATERIEL CORP. ITS UNAUTHORIZED USE OR REPRODUCTION IN WHOLE OR IN PART IS STRICTLY FORBIDDEN.

MS-2736



HOLES:  
 A-.161-.164 DIA. 4 REQ.  
 B- 1/4 DIA. 5 REQ.

METEL STAMP TMC PART NO. MS-2736 IN 1/8 HIGH GOTHIC AS SHOWN.

USE MATERIAL THICKNESS FOR MAX. RADIUS ON ALL BENDS UNLESS OTHERWISE SPECIFIED

4	1	NT-129-440-4	NUT, ROUND, SWAGE TYPE	A
REQ.	ITEM	PART NO.	DESCRIPTION	SYMBOL
.064			THE TECHNICAL MATERIEL CORP.	
STOCK SIZE			MAMARONECK, NEW YORK	
ALUMINUM			BRACKET, ANGLE	
MATERIAL			(RF SHIELD #3, MAIN CHASSIS)	
5052-H32			W.S.	
TYPE & TEMPER		HEAT TREAT. SPEC.	DRAWN	CHECKED
S-404 YEL IRIDITE				
FINISH & SPEC. NO.		ELEC. DES. APP.	MECH. DES. APP.	

SYM	DESCRIPTION	DATE	CH. NO.	DRAFTS	CHECKER	ENG. APP.
UNLESS OTHERWISE SPECIFIED:		SCALE: DO NOT SCALE				
DIMENSIONS ARE IN INCHES		MAXIMUM ALLOWABLE TOLERANCES HAVE BEEN DETERMINED AND ANY DEVIATIONS WILL BE CAUSE FOR REJECTION.				
TOLERANCES ON		REMOVE ALL BURRS AND SHARP EDGES				
FRACTIONS ± 1/64						
DECIMALS ± .005						
ANGLES ± 1/2°						
A						
1	AFC-2					11-3
REQ. PER UNIT	MODEL	SECTION	ASS'Y. NO.	DATE	USED ON	