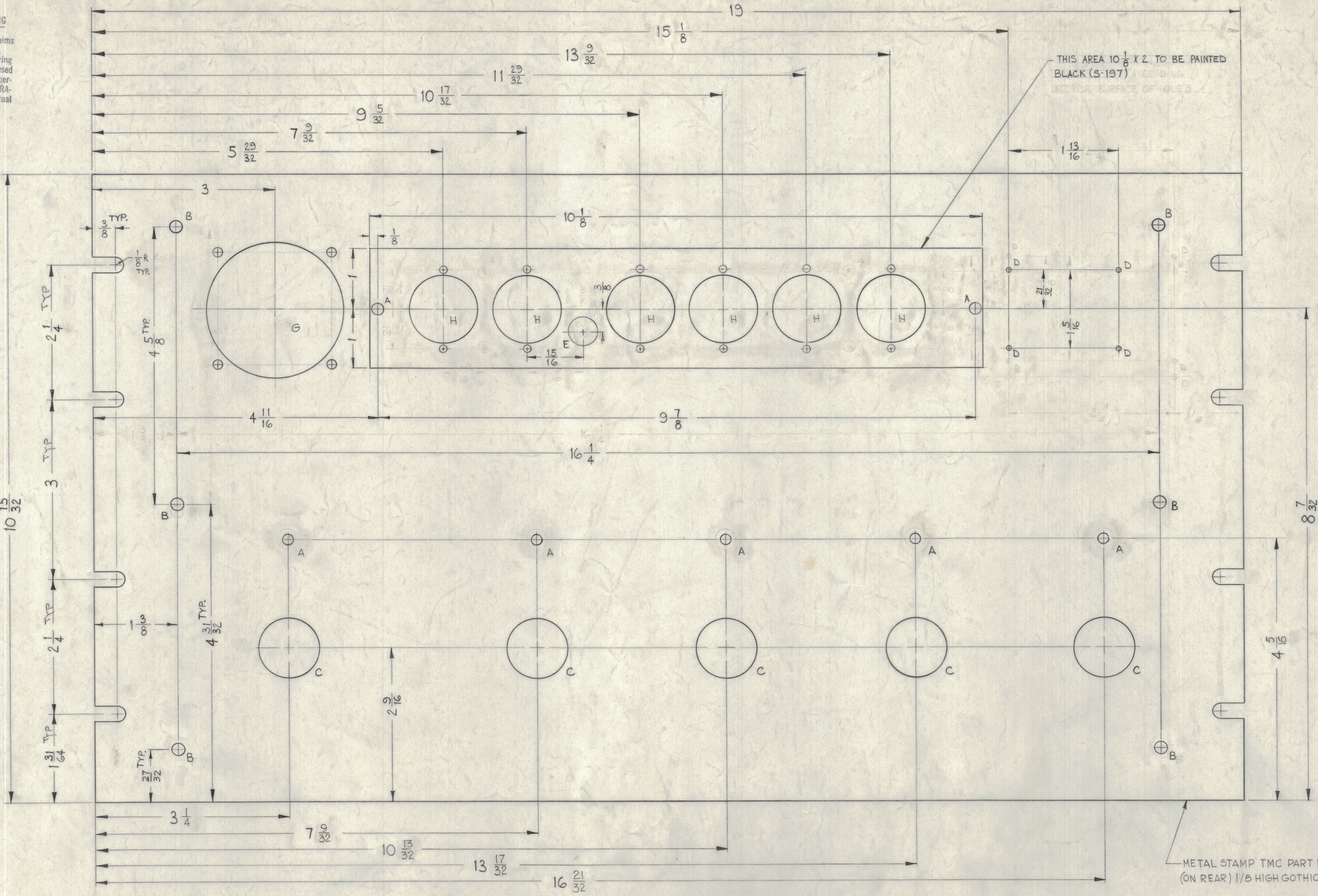


NOTICE TO PERSONS RECEIVING THIS DRAWING

THE TECHNICAL MATERIEL CORPORATION claims proprietary right in the material disclosed hereon. This drawing is issued in confidence for engineering information only and may not be reproduced or used to manufacture anything shown hereon without permission from THE TECHNICAL MATERIEL CORPORATION to the user. This drawing is loaned for mutual assistance and is subject to recall at any time.

Property of:
THE TECHNICAL MATERIEL CORPORATION
MAMARONECK, NEW YORK

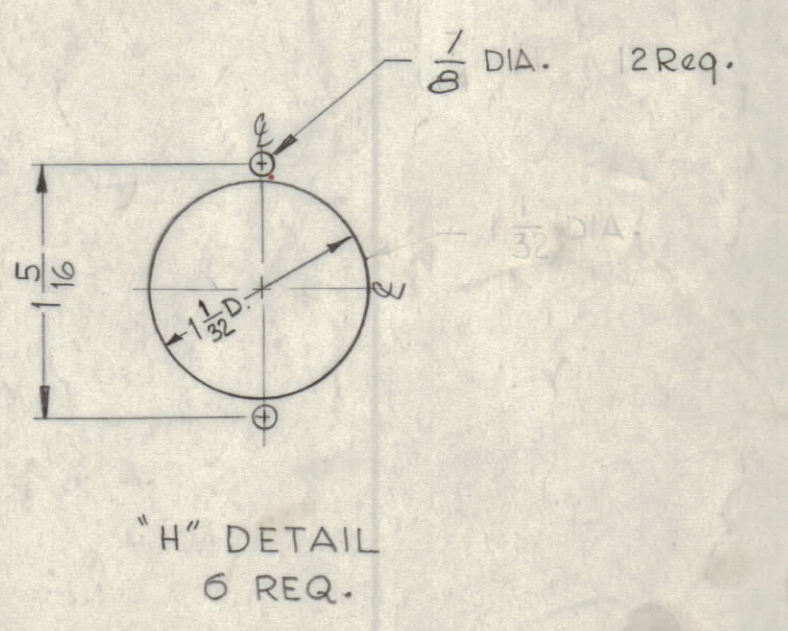
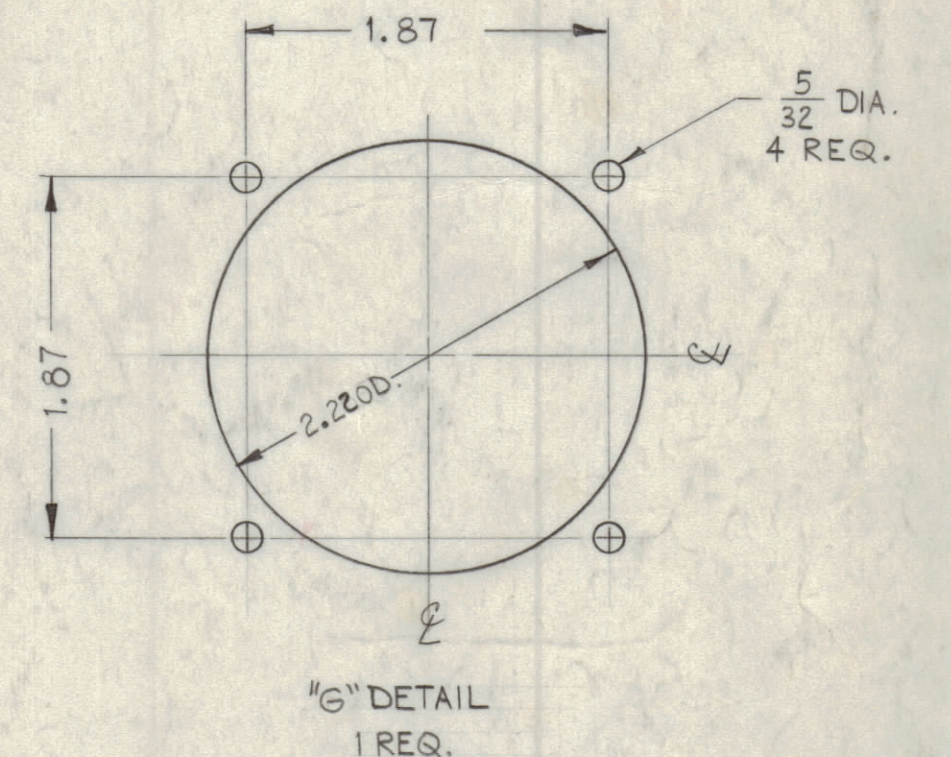


LEGEND		
HOLE	DESCRIPTION	REQ.
A	3/16 DIA.	7
B	13/64 DIA.	6
C	1 DIA.	5
D	.076 DIA.	4
E	15/32 DIA.	1



HOLES	SCREW TYPE	X	Y	REQ.
E	0132	1330	1166	2
F	10 32	30	106	2

C'S SINK DETAILS



MACHINING -

- LATERAL BOW OF PANEL MUST BE KEPT TO .031 TOLERANCE.
- MILL ALL EDGES.
- HOLES MUST BE DRILLED.
- PANEL MUST BE FREE OF ALL MACHINING MARKS GOUGES & SCRATCHES. IF NECESSARY SAND FRONT OF PANEL WITH NO. 120 GRIT SANDPAPER.

FINISH -

- S404 YELLOW IRIDITE.
- S114 ZINC CHROMATE PRIMER FRONT &
- S115 TMC SMOOTH GREY ENAMEL EDGES ONLY.
- S197 BLACK SEMI-GLOSS BAKING ENAMEL (SEE NOTE ABOVE).

METAL STAMP TMC PART No. (ON REAR) 1/8 HIGH GOTHIC AS SHOWN

SYM	ZONE	DESCRIPTION	DATE	CH. NO.	DRAFTS	CHECKER	ENG. APP.
C		ON DETAIL 'H' 1/8 DIA. WAS 7/64 DIA.	1/16/69	18063	LH		
B	D2	DET 'G' 2.220 DIA HOLE WAS 2.250 DIA.	2-10-65	13420			
A	G4	NOTE 'E' WAS INCLUDING INTERIOR SURFACE OF HOLES	4-2-63	8689			

UNLESS OTHERWISE SPECIFIED: SCALE FULL (DO NOT SCALE).

DIMENSIONS ARE IN INCHES

TOLERANCES ON FRACTIONS ± 1/64 DECIMALS ± .005 ANGLES ± 1/2°

MAXIMUM ALLOWABLE TOLERANCES HAVE BEEN DETERMINED AND ANY DEVIATIONS WILL BE CAUSE FOR REJECTION. REMOVE ALL BURRS & SHARP EDGES

REF: LD-1002 (8).

REQ. ITEM	PART NO.	J. STRUMMER	DESCRIPTION	SYMBOL
1	3/16		THE TECHNICAL MATERIEL CORP. MAMARONECK, NEW YORK	
	STOCK SIZE		PANEL, FRONT MACHINING	
	ALUMINUM			
	MATERIAL			
	2024-T3			
	TYPE & TEMPER		HEAT TREAT. SPEC.	
	SEE NOTE			
	FINISH & SPEC. NO.			

MS-2734 C

MS-2734 C