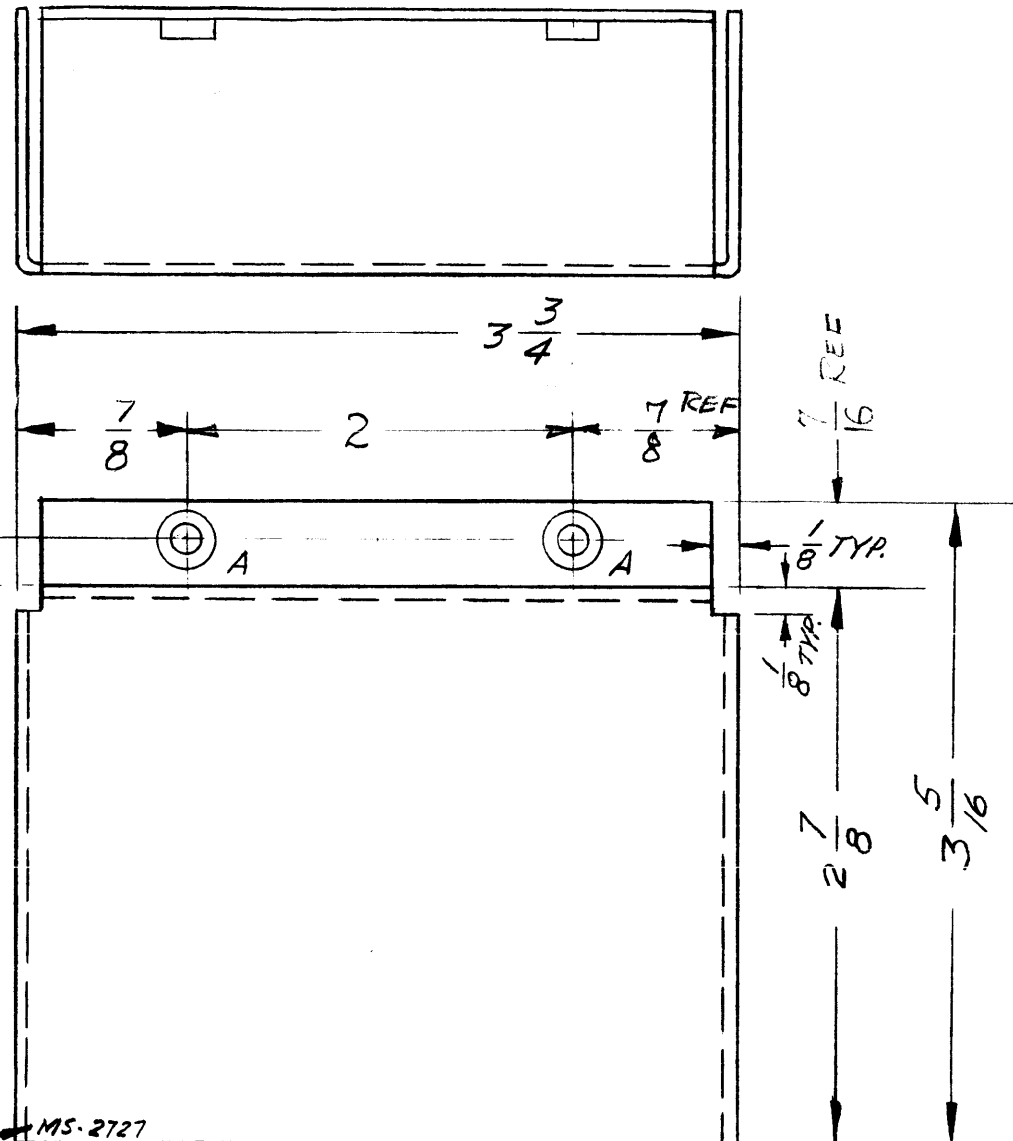
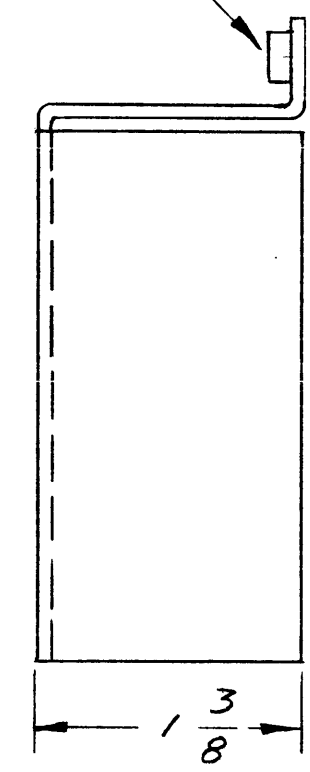


MS-2727



HOLES:
A - .191-.194 DIA. 2 REQ.

① MOUNT ITEM 1 IN ALL "A" HOLES AFTER FINISHING AS SHOWN.



PROPERTY OF THE TECHNICAL MATERIEL CORPORATION
MAMARONECK, NEW YORK

METAL STAMP TMC PART NO., 1/8 HIGH GOTHIC, AS SHOWN.

SYM	DESCRIPTION	DATE	CH. NO.	DRAFTS	CHECKER	ENG. APP.
UNLESS OTHERWISE SPECIFIED:						
DIMENSIONS ARE IN INCHES		SCALE:				
TOLERANCES ON FRACTIONS ± 1/64 DECIMALS ± .005 ANGLES ± 1/2°		MAXIMUM ALLOWABLE TOLERANCES HAVE BEEN DETERMINED AND ANY DEVIATIONS WILL BE CAUSE FOR REJECTION. REMOVE ALL BURRS AND SHARP EDGES				

USE MATERIAL THICKNESS FOR MAX. RADIUS ON ALL BENDS UNLESS OTHERWISE SPECIFIED

REQ. PER UNIT	MODEL	SECTION	ASS'Y. NO.	DATE
1	HFI-1			7-26-62

2	1	NT-129-632-3	NUT, ROUND, SWAGE TYPE	A
REQ. ITEM	PART NO.		M. GELLMAN DESCRIPTION	SYMBOL
.051			THE TECHNICAL MATERIEL CORP. MAMARONECK, NEW YORK	
ALUMINUM			COVER, POWER CONNECTOR	
5052-H32			WA	RUIZZO
TYPE & TEMPER		HEAT TREAT. SPEC.	DRAWN	CHECKER
S404 YEL IRIDITE				
FINISH & SPEC. NO.			ELEC. DES. APP.	MECH. DES. APP.
				MS-2727