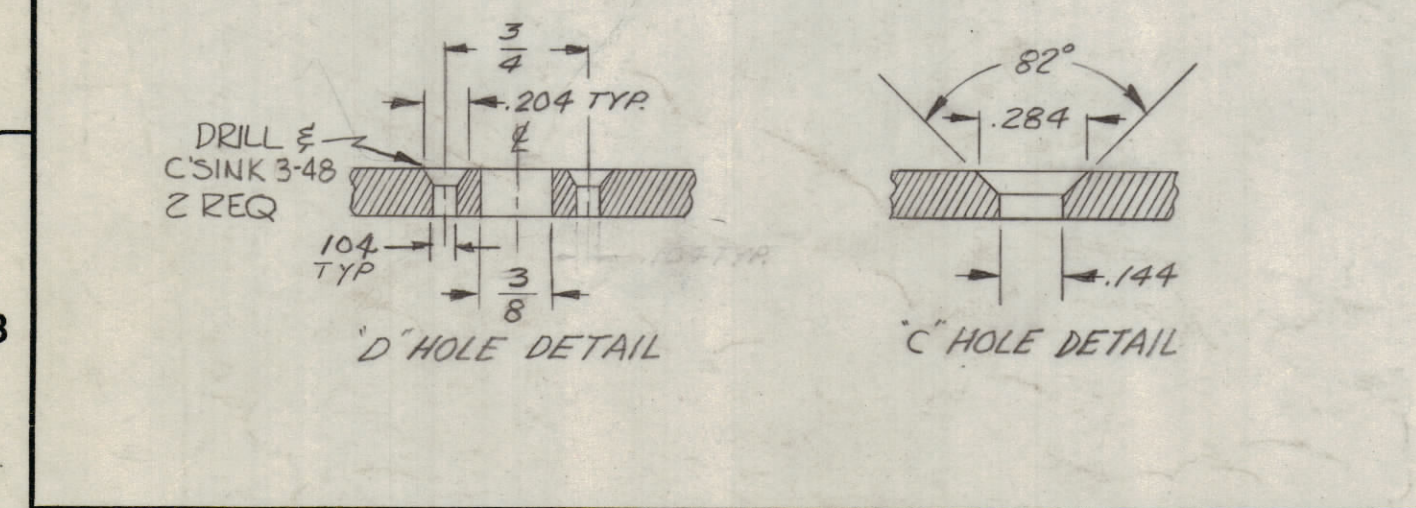


METAL STAMP TMC PART NO. 1/8 HIGH GOTHIC, AS SHOWN.



- HOLES:**
- A - 7/32 DIA. 2 REQ.
  - B - .221-.224 DIA. 2 REQ.
  - C - DRILL & C'SINK FOR 6-32 (SEE DETAIL) 6 REQ.
  - D - SEE DETAIL FOR 3-48 (SEE DETAIL) 6 REQ.
  - E - 1" DIA. 5 REQ.
  - F - .250-.253 DIA. 4 REQ.

USE MATERIAL THICKNESS FOR MAX. RADIUS ON ALL BENDS UNLESS OTHERWISE SPECIFIED

UNLESS OTHERWISE SPECIFIED DIMENSIONS ARE IN INCHES AND INCLUDE CHEMICALLY APPLIED OR PLATED FINISHES	
DECIMALS X ± .05 .XX ± .01 XXX ± .005	FRACTIONS ± 1/64 ANGLES ± 0° 30'
<b>TOLERANCES</b>	

**NOTICE TO PERSONS RECEIVING THIS DRAWING**

THE TECHNICAL MATERIEL CORPORATION claims proprietary right in the material disclosed hereon. This drawing is issued in confidence for engineering information only and may not be reproduced or used to manufacture anything shown hereon without permission from THE TECHNICAL MATERIEL CORPORATION to the user. This drawing is loaned for mutual assistance and is subject to recall at any time.

Property of:  
THE TECHNICAL MATERIEL CORPORATION  
MAMARONECK, NEW YORK

4	2	NT-129-1032-4	NUT, ROUND, SWAGE TYPE	F
2	1	NT-129-832-4	NUT, ROUND, SWAGE TYPE	B
REQ.	ITEM	PART NO.	M. GELLMAN DESCRIPTION	SYMBOL
.081			THE TECHNICAL MATERIEL CORP.	
STOCK SIZE			MAMARONECK, NEW YORK	
ALUMINUM			PLATE, SIDE, LEFT	
MATERIAL				
5052-H32			DRAWN <i>wh</i> CHECKED <i>hde</i> FINAL APPROVAL <i>RP</i>	
TYPE & TEMPER			HEAT TREAT. SPEC.	
5404 YEL. IRIDITE			<i>M</i> <i>R.P.S.</i> MS-2724 B	
FINISH & SPEC. NO.			ELEC. DES. APP. MECH. DES. APP. SHEET OF	

B	E5	SEE EMN #10823 FOR CHANGES	2-10-64	10823	A.M.	TR	<i>[Signature]</i>
A	E6	ADDED ITEM (2) "F" HOLES WERE 13/64 DIA.	7-30-63	9658	AR.	<i>[Signature]</i>	<i>[Signature]</i>
SYM	ZONE	DESCRIPTION	DATE	CH. NO.	DRAFTS	CHECKER	ENG. APP.
UNLESS OTHERWISE SPECIFIED:			SCALE				
DIMENSIONS ARE IN INCHES			MAXIMUM ALLOWABLE TOLERANCES HAVE BEEN DETERMINED AND ANY DEVIATIONS WILL BE CAUSE FOR REJECTION. REMOVE ALL BURRS & SHARP EDGES				
TOLERANCES ON							
FRACTIONS ± 1/64			DECIMALS ± .005		ANGLES ± 1/2°		

1	HF1-1			7-26-62
REQ. PER UNIT	MODEL	SECTION	ASS'Y. NO.	DATE
USED ON				