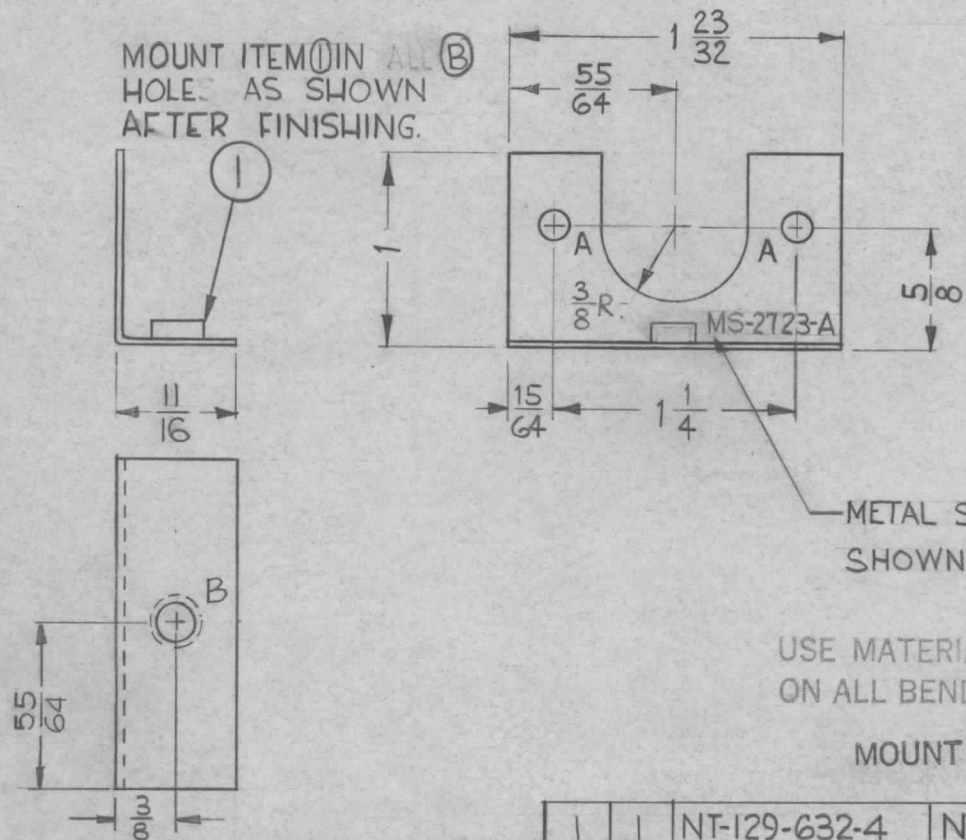


THE CONTENTS OF THIS DRAWING ARE THE EXCLUSIVE PROPERTY OF THE TECHNICAL MATERIEL CORP. ITS UNAUTHORIZED USE OR REPRODUCTION IN WHOLE OR IN PART IS STRICTLY FORBIDDEN.

REQ. PER UNIT 1	USED ON			MS-2723	△
	MODEL SBS-1	ASS'Y. NO.	DATE 10-23-61		

USE MATERIAL THICKNESS FOR MAX. RADIUS ON ALL BENDS UNLESS OTHERWISE SPECIFIED

A - $\frac{5}{32}$ DIA. 2 REQ.
B - .191-.194 DIA. 1 REQ.



UNLESS OTHERWISE SPECIFIED DIMENSIONS ARE IN INCHES AND INCLUDE CHEMICALLY APPLIED OR PLATED FINISHES	
DECIMALS	FRACTIONS
.X ± .05	± 1/64
.XX ± .01	ANGLES
.XXX ± .005	± 0° 30'

CUT HERE
GUARANTEED
2-66

METAL STAMP TMC PART NO. AS SHOWN $\frac{1}{8}$ HIGH GOTHIC.

USE MATERIAL THICKNESS FOR MAX. RADIUS ON ALL BENDS UNLESS OTHERWISE SPECIFIED

MOUNT INSERTS AFTER FINISHING

1	1	NT-129-632-4	NUT, ROUND, SWAGE TYPE		B
REQ.	ITEM	PART NO.	DESCRIPTION		SYMBOL
		.064	THE TECHNICAL MATERIEL CORP.		
		STOCK SIZE	MAMARONECK, NEW YORK		
A	11/16 Dim. Was 5/8	12-14-61 6048 E.A.	BRACKET, MOUNTING CABLE		
SYM	DESCRIPTION	DATE	CH. NO.	CHECKER	ENG. APP.
UNLESS OTHERWISE SPECIFIED: DIMENSIONS ARE IN INCHES. TOLERANCES ON		SCALE: FULL (DO NOT SCALE).			
FRAC. ± 1/64 DEC. ± .005 ANGLES ± 1/2°		MAXIMUM ALLOWABLE TOLERANCES HAVE BEEN DETERMINED AND ANY DEVIATIONS WILL BE CAUSE FOR REJECTION. REMOVE ALL BURRS AND SHARP EDGES			
		5052-H32		WAF	AWO
		TYPE & TEMPER	HEAT TREAT. SPEC.	DRAWN	CHECKED
		S404 YELL IRIDITE			
		FINISH & SPEC. NO.	ELEC. DES. APP.	MECH. DES. APP.	
					MS-2723
					△