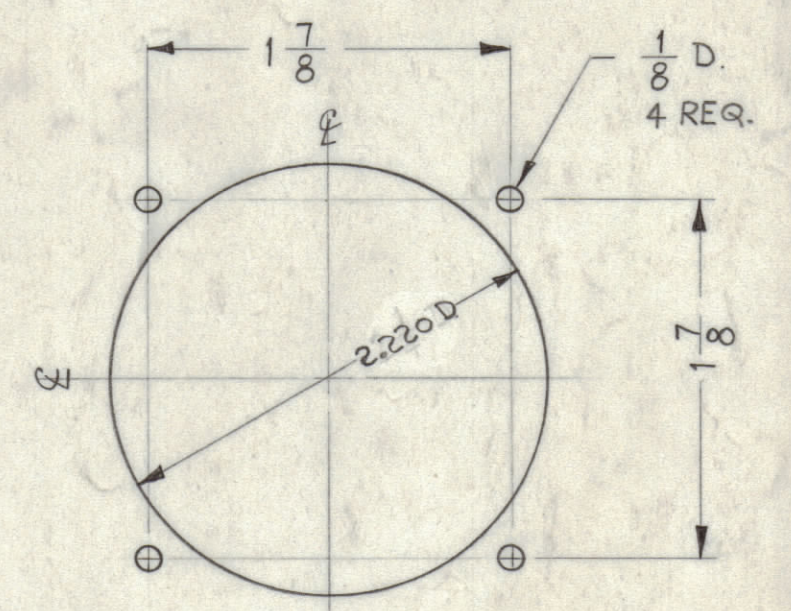
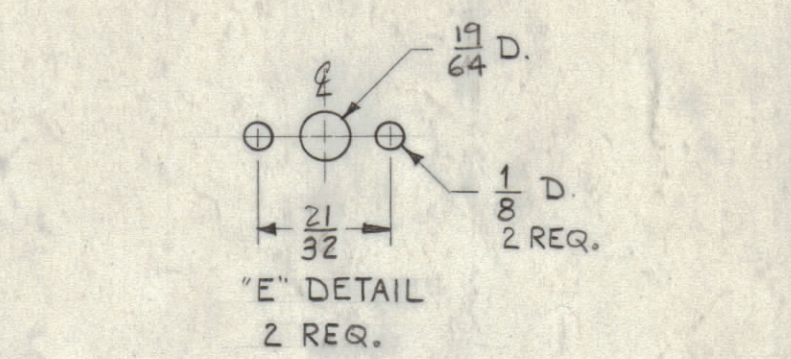
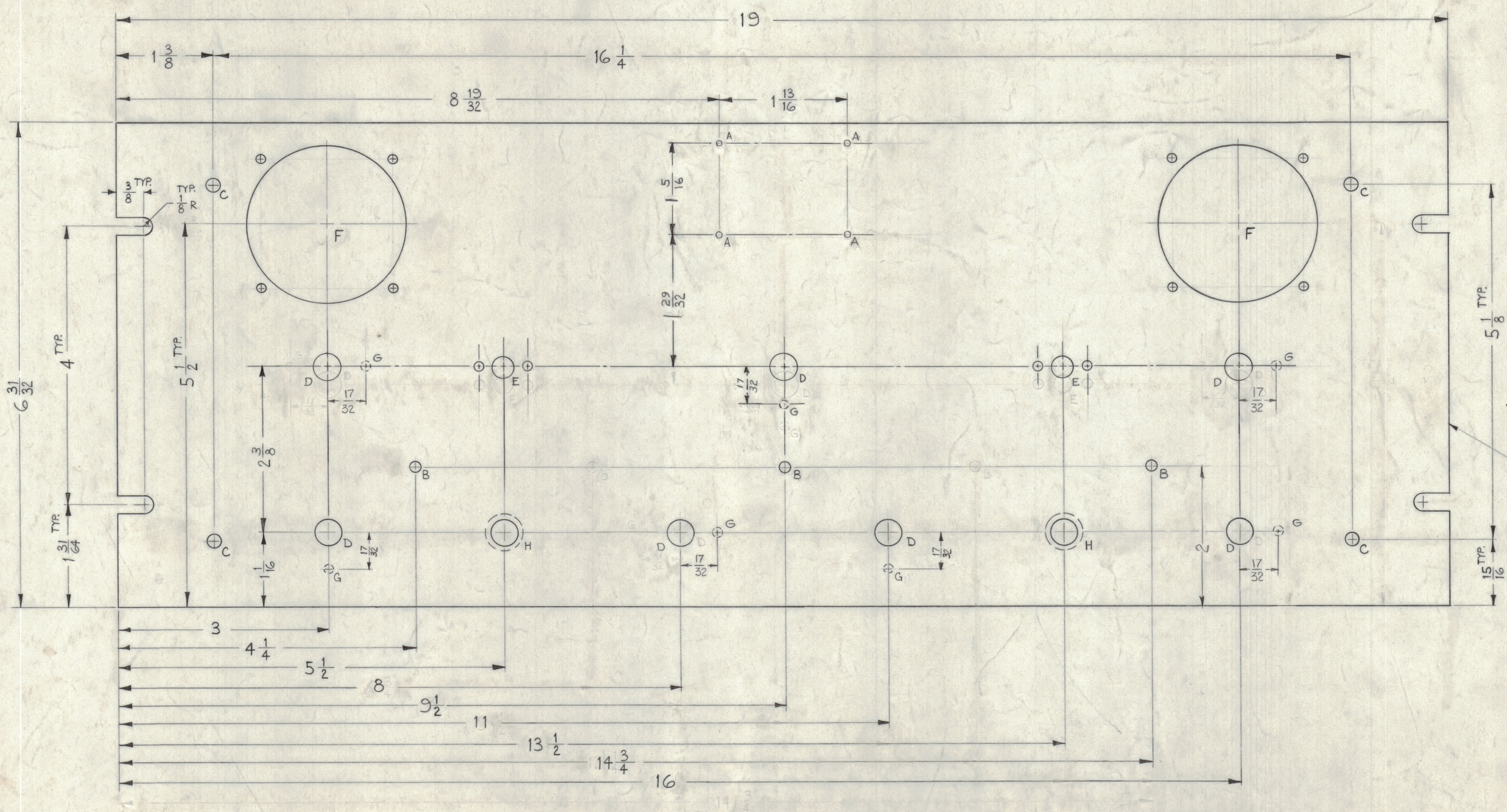


NOTICE TO PERSONS RECEIVING THIS DRAWING
 THE TECHNICAL MATERIEL CORPORATION claims proprietary right in the material disclosed herein. This drawing is issued in confidence for engineering information only and may not be reproduced or used to manufacture anything shown herein without permission from THE TECHNICAL MATERIEL CORPORATION to the user. This drawing is loaned for mutual assistance and is subject to recall at any time.

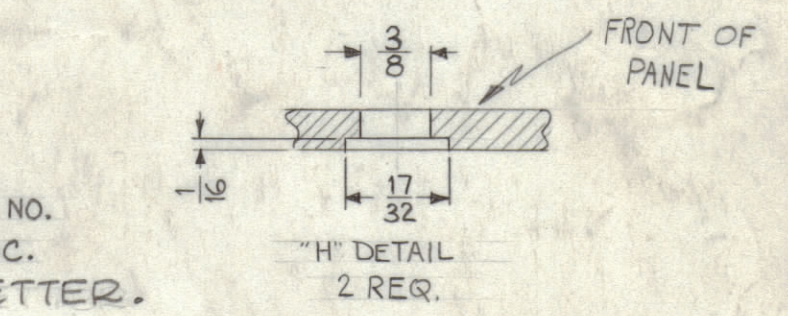
Property of:
 THE TECHNICAL MATERIEL CORPORATION
 MAMARONECK, NEW YORK

- A - .076 DIA. 4 REQ.
- B - $\frac{5}{32}$ DIA. 3 "
- C - $\frac{7}{32}$ DIA. 4 "
- D - $\frac{3}{8}$ DIA. 7 "



"E" DETAIL
2 REQ.

"F" DETAIL
2 REQ.



METAL STAMP TMC PART NO.
 ON REAR $\frac{1}{8}$ HIGH GOTHIC.
 W/LATEST REV. LETTER.

MACHINING~
 1-LATERAL BOW OF PANEL MUST BE KEPT TO .031 TOLERANCE.
 2-MILL ALL EDGES.
 3-HOLES MUST BE DRILLED.
 4-PANEL MUST BE FREE OF ALL MACHINING MARKS GOUGES & SCRATCHES.
 IF NECESSARY SAND FRONT OF PANEL WITH NO. 120 GRIT SANDPAPER.

FINISH~
 S404 YELLOW IRIDITE.
 S114 ZINC CHROMATE PRIMER. FRONT &
 S115 TMC SMOOTH GREY ENAMEL EDGES ONLY.

UNLESS OTHERWISE SPECIFIED	
DECIMALS	FRACTIONS
.XX ± .01	± 1/64
.XXX ± .008	ANGLES ± 9° 30'

BYM	ZONE	DESCRIPTION	DATE	CH. NO.	DRAFTS	CHECKER	ENG. APP.
A	E2	DET 'F', 2.220 DIA HOLE WAS 2. V4 DIA	2-10-65	1342.0			

UNLESS OTHERWISE SPECIFIED:
 DIMENSIONS ARE IN INCHES
 TOLERANCES ON
 FRACTIONS ± 1/64 DECIMALS ± .005 ANGLES ± 1/2°

SCALE DO NOT SCALE
 MAXIMUM ALLOWABLE TOLERANCES HAVE BEEN DETERMINED AND ANY DEVIATIONS WILL BE CAUSE FOR REJECTION.
 REMOVE ALL BURRS & SHARP EDGES

REF: LD-994 (8).

REQ. ITEM	PART NO.	DESCRIPTION	SYMBOL
1	HFA-1	AUDIO DECK	

2024-T3	ALUMINUM	THE TECHNICAL MATERIEL CORP. MAMARONECK, NEW YORK	FRONT PANEL MACHINING
DRAWN	CHECKED	FINAL APPROVAL	
SEE NOTE			MS-2720
FINISH & SPEC. NO.	ELEC. DES. APP.	MECH. DES. APP.	SHEET OF

MS-2720 A