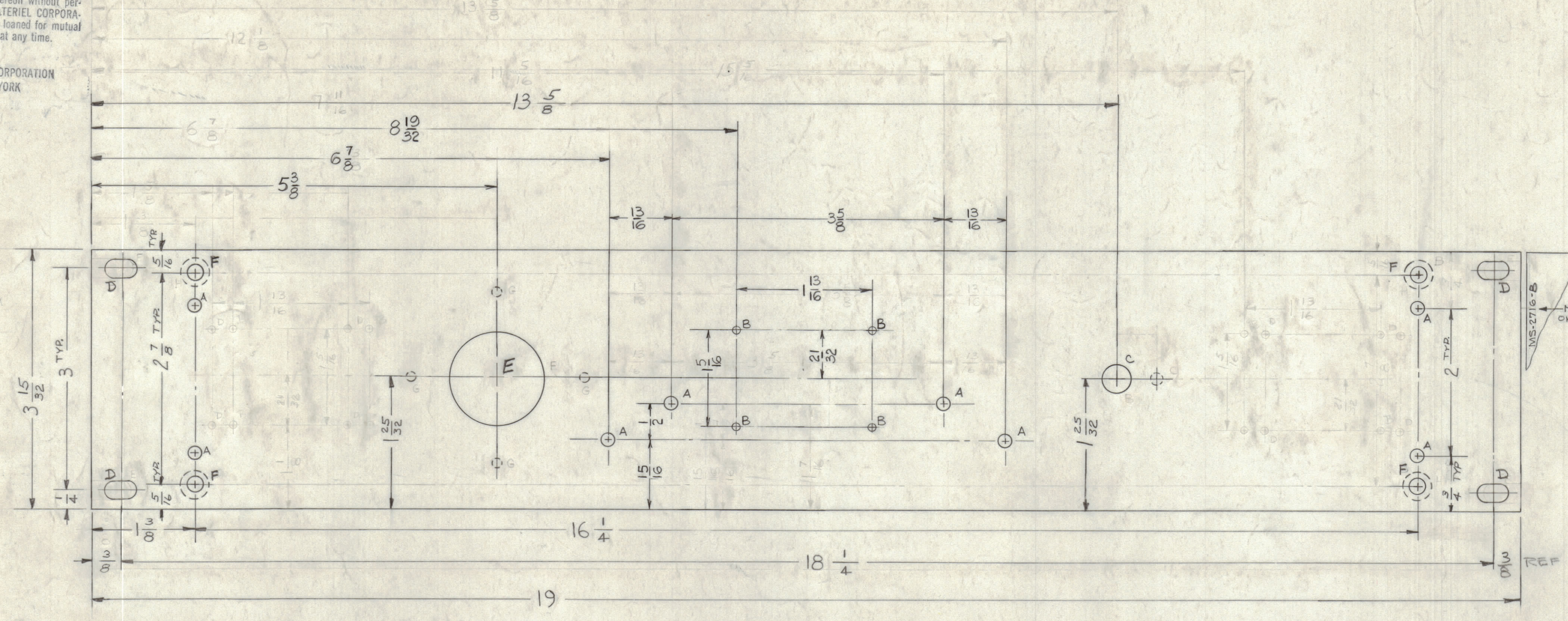


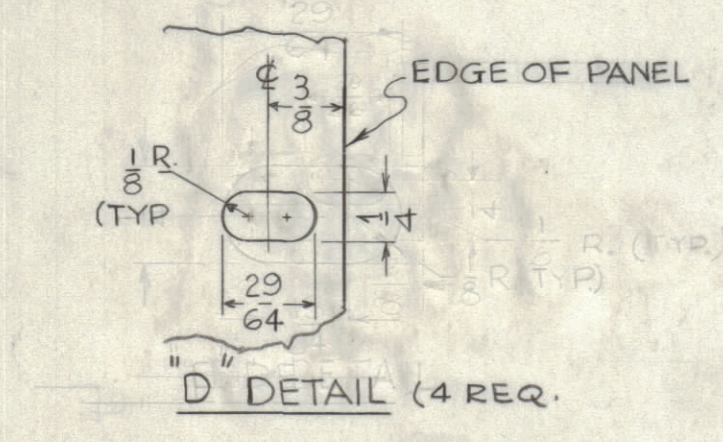
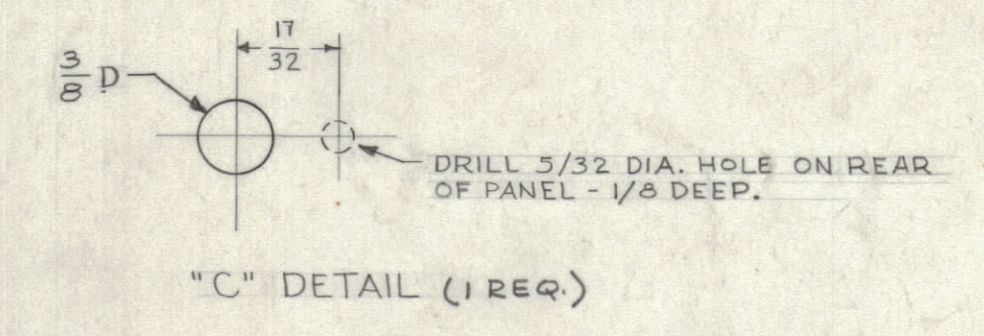
NOTICE TO PERSONS RECEIVING THIS DRAWING
 THE TECHNICAL MATERIEL CORPORATION claims proprietary right in the material disclosed hereon. This drawing is issued in confidence for engineering information only and may not be reproduced or used to manufacture anything shown hereon without permission from THE TECHNICAL MATERIEL CORPORATION to the user. This drawing is loaned for mutual assistance and is subject to recall at any time.

Property of:
 THE TECHNICAL MATERIEL CORPORATION
 MAMARONECK, NEW YORK

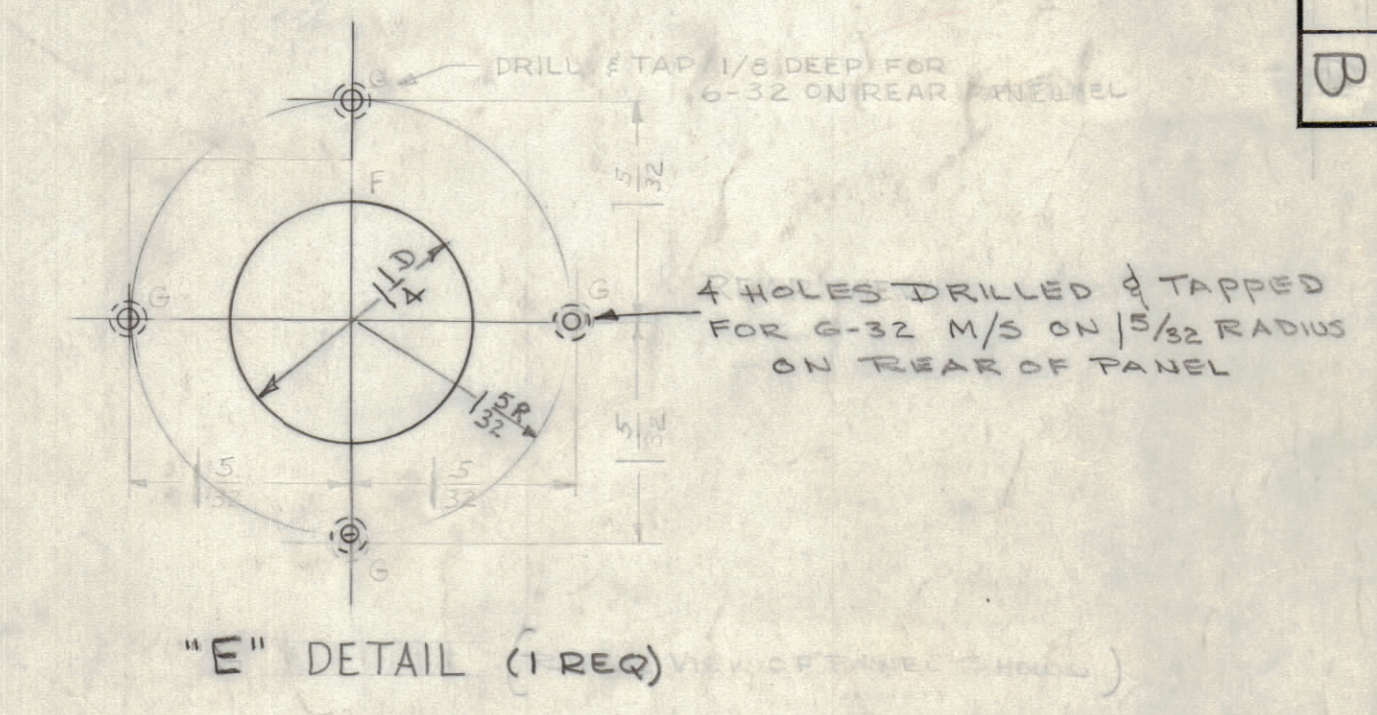
LEGEND		
HOLE	DESCRIPTION	REQ.
A	11/64 DIA.	8
B	.078 DIA.	4
C	SEE DETAIL	1
D	SEE DETAIL	4
E	SEE DETAIL	1
F	SEE DETAIL	4
G	SEE DETAIL	4
H	SEE DETAIL	4



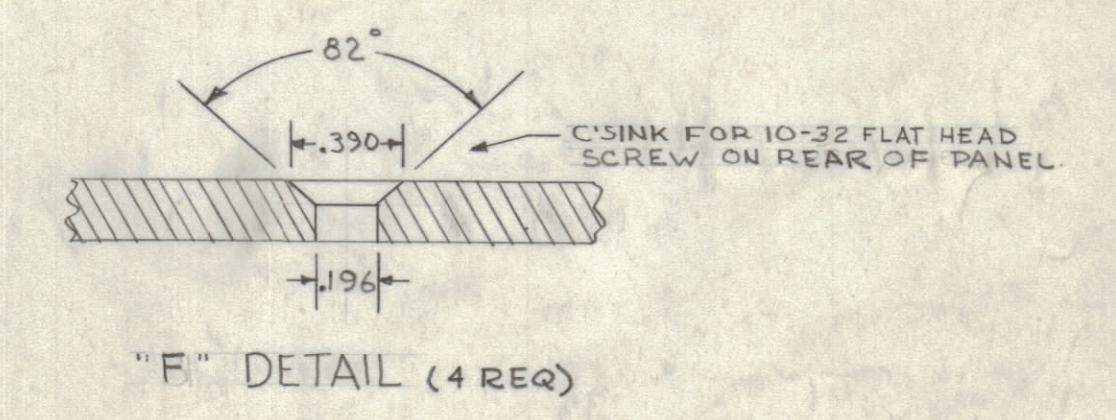
METAL STAMP TMC PART NO. ON REAR 1/8 HIGH GOTHIC.



- MACHINING**
- 1 - LATERAL BOW OF PANEL MUST BE KEPT TO .031 TOLERANCE.
 - 2 - MILL ALL EDGES.
 - 3 - HOLES MUST BE DRILLED.
 - 4 - PANEL MUST BE FREE OF ALL MACHINING MARKS, GOUGES, SCRATCHES. IF NECESSARY SAND FRONT OF PANEL WITH NO. 120 GRIT SANDPAPER.



- FINISH**
- S404 YELLOW IRIDITE
 - S114 ZINC CHROMATE PRIMER } FRONT &
 - S115 TMC SMOOTH GRAY ENAMEL } EDGES ONLY.



UNLESS OTHERWISE SPECIFIED DIMENSIONS ARE IN INCHES AND INCLUDE CHEMICALLY APPLIED OR PLATED FINISHES	
DECIMALS: .01, .02, .05	FRACTIONS: 1/64, 1/32, 1/16, 3/32, 1/8, 3/16, 1/4, 3/8, 1/2, 5/8, 3/4, 7/8
TOLERANCES: .01, .02, .05	ANGLES: 1/2, 3/4, 1, 1 1/4, 1 1/2, 2, 3, 4, 5, 6, 8, 10, 15, 20, 30, 45, 60, 90

UNLESS OTHERWISE SPECIFIED: DIMENSIONS ARE IN INCHES	SCALE: MAXIMUM ALLOWABLE TOLERANCES HAVE BEEN DETERMINED AND ANY DEVIATIONS WILL BE CAUSE FOR REJECTION. REMOVE ALL BURRS & SHARP EDGES
TOLERANCES ON FRACTIONS ± 1/64	DECIMALS ± .005
ANGLES ± 1/2°	

REF: LD-1061 (8)

REQ. ITEM	PART NO.	M. GELMAN	DESCRIPTION	SYMBOL
1	3/16		THE TECHNICAL MATERIEL CORP. MAMARONECK, NEW YORK	A
2	3/8 ALUMINUM		PANEL, FRONT, MACHINING	B
MATERIAL		2024-T3		
TYPE & TEMPER		HEAT TREAT. SPEC.		
FINISH & SPEC. NO.		SEE NOTES		
ELEC. DES. APP.		MECH. DES. APP.		
SHEET		OF		
MS-2716		B		

MS-2716 B