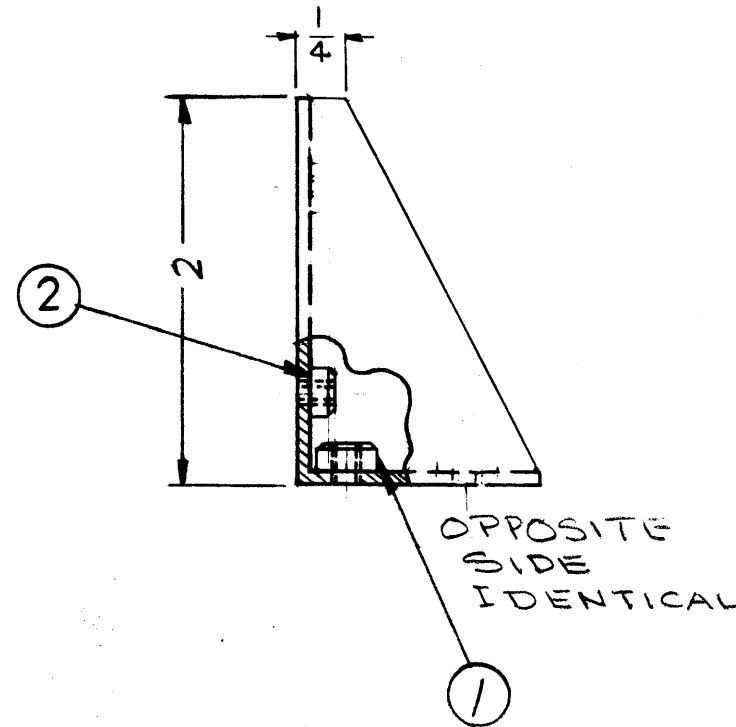
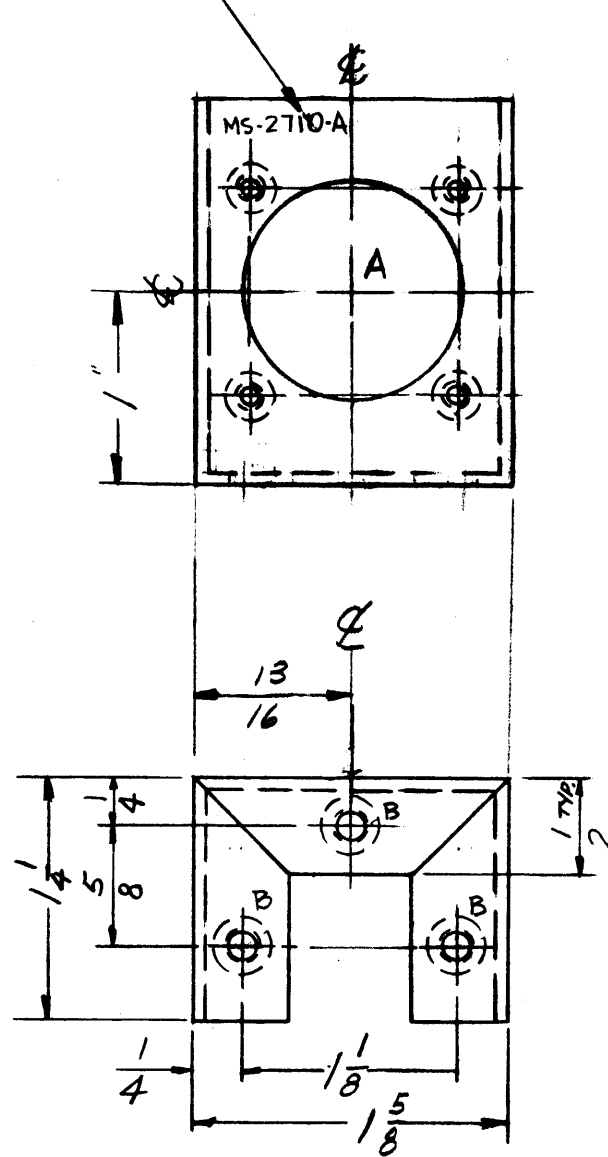
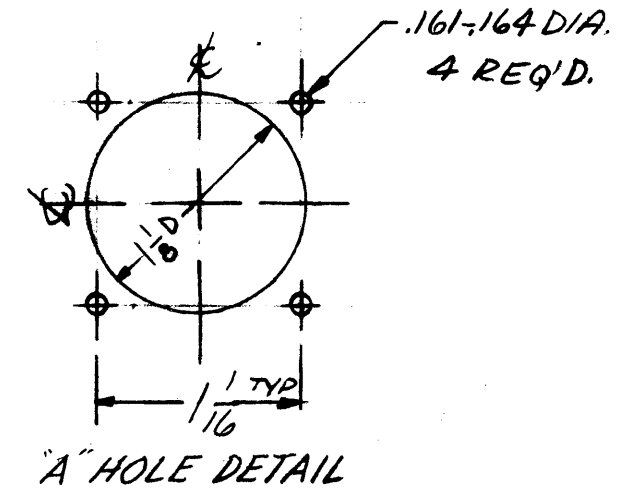


MS-2710 A

METAL STAMP TMC PART NO.  $\frac{1}{8}$  HIGH GOTHIC



HOLES ~  
A - SEE DETAIL 1 REQ'D.  
B - .191-.194 DIA 3 REQ'D.



USE MATERIAL THICKNESS FOR MAX. RADIUS ON ALL BENDS UNLESS OTHERWISE SPECIFIED.

MOUNT INSERTS AFTER FINISHING

NOTICE TO PERSONS RECEIVING THIS DRAWING

THE TECHNICAL MATERIEL CORPORATION claims proprietary right in the material disclosed hereon. This drawing is issued in confidence for engineering information only and may not be reproduced or used to manufacture anything shown hereon without permission from THE TECHNICAL MATERIEL CORPORATION to the user. This drawing is loaned for mutual assistance and is subject to recall at any time.

Property of:

THE TECHNICAL MATERIEL CORPORATION  
MAMARONECK, NEW YORK

A	ON RIGHT SIDE VIEW $\frac{1}{4}$ " LIP ADDED	2-20-63	8320			
SYM	DESCRIPTION	DATE	CH. NO.	DRAFTS	CHECKER	ENG. APP.
UNLESS OTHERWISE SPECIFIED: DIMENSIONS ARE IN INCHES TOLERANCES ON FRACTIONS $\pm 1/64$ DECIMALS $\pm .005$ ANGLES $\pm 1/2^\circ$		SCALE: MAXIMUM ALLOWABLE TOLERANCES HAVE BEEN DETERMINED AND ANY DEVIATIONS WILL BE CAUSE FOR REJECTION. REMOVE ALL BURRS AND SHARP EDGES				

1	AFC-3			4-12-62
1	AFC-2A			4-12-62
1	AFC-2			10-16-61
REQ. PER UNIT	MODEL	SECTION	ASS'Y. NO.	DATE
USED ON				

4	2	NT-129-440-4	NUT, ROUND, SWAGE TYPE	A
3	1	NT-129-632-4	NUT, ROUND, SWAGE TYPE	B
REQ.	ITEM	PART NO.	DESCRIPTION	SYMBOL
.081 THICK STOCK SIZE			THE TECHNICAL MATERIEL CORP. MAMARONECK, NEW YORK	
ALUMINUM			BRACKET, MOUNTING CONNECTOR	
MATERIAL				
5052-H32				
TYPE & TEMPER	HEAT TREAT. SPEC.	DRAWN	CHECKER	FINAL APPROVAL
S404-YEL-IRIDITE				
FINISH & SPEC. NO.			REC. DES. APP.	MECH. DES. APP.
MS-2710				A