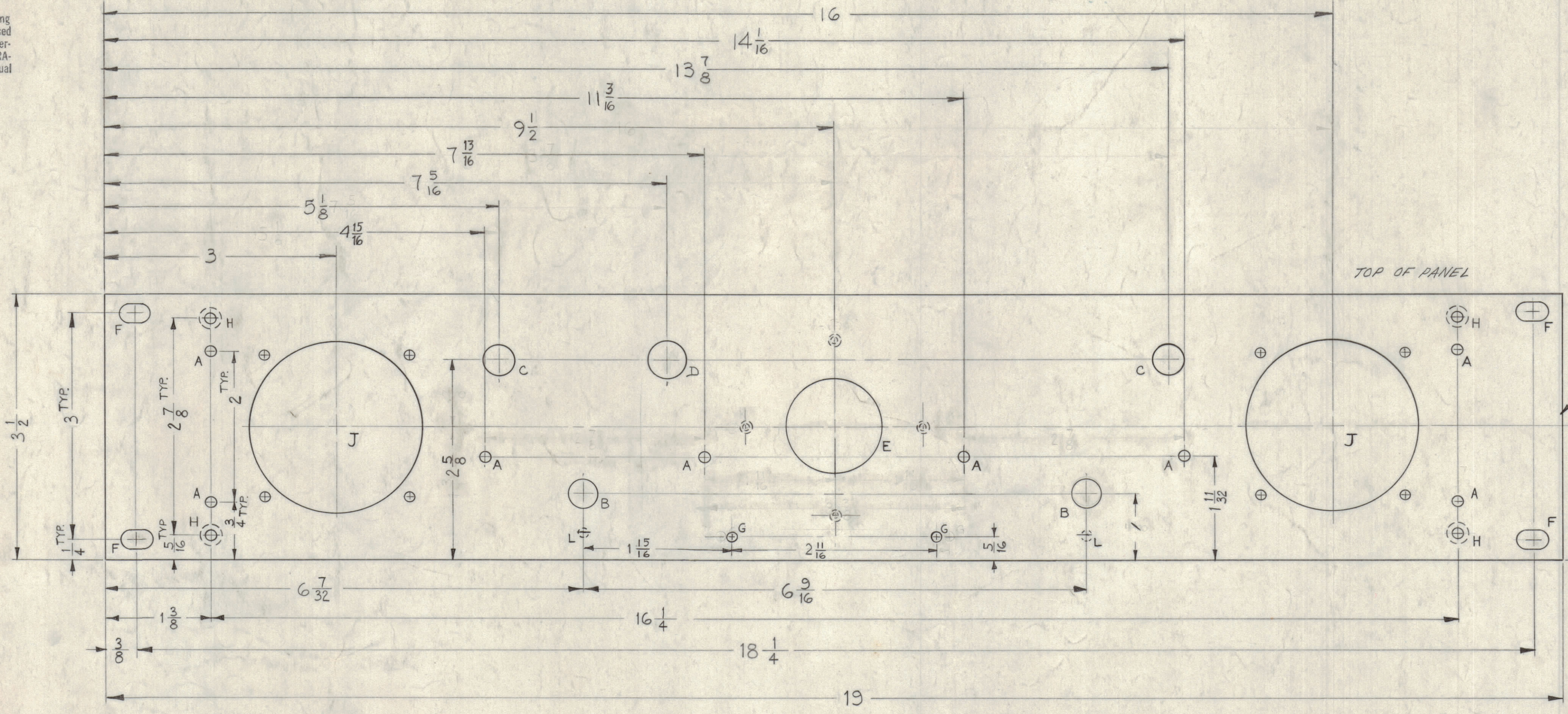


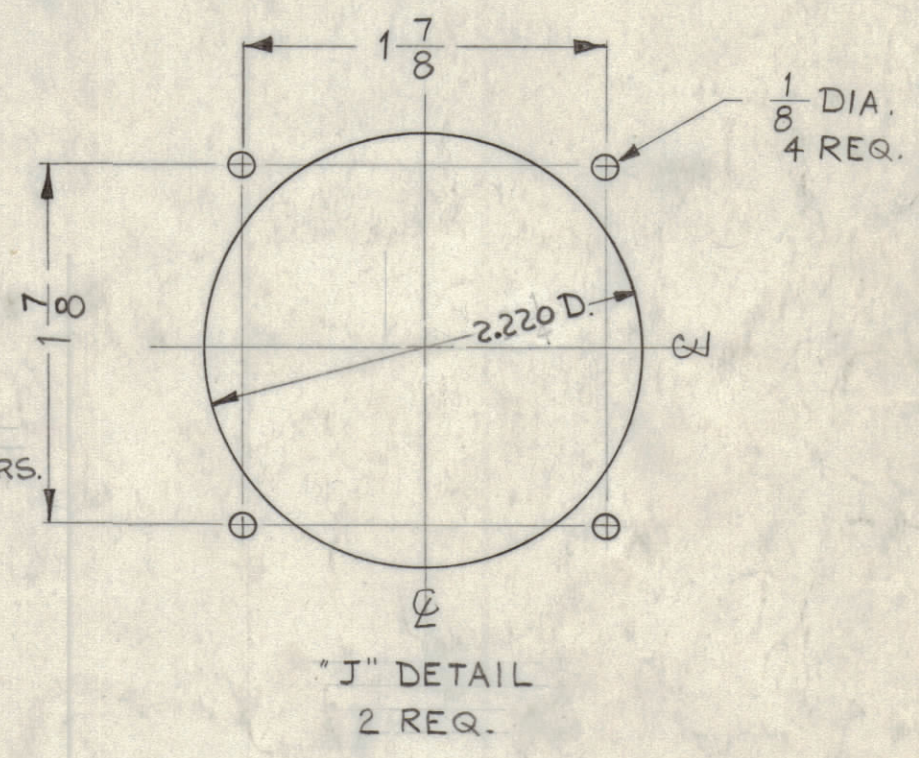
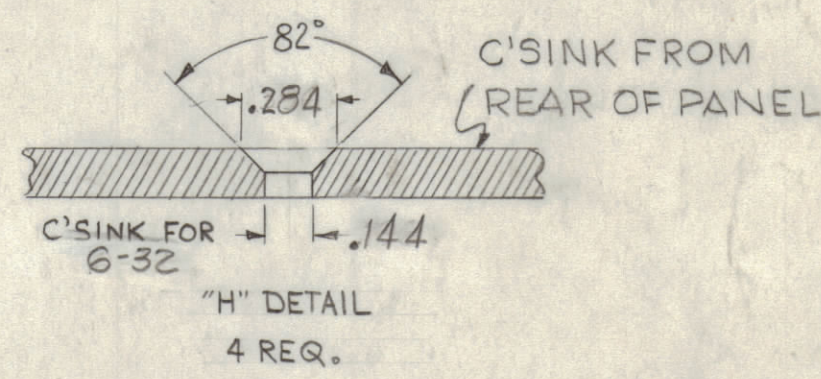
NOTICE TO PERSONS RECEIVING THIS DRAWING

THE TECHNICAL MATERIEL CORPORATION claims proprietary right in the material disclosed herein. This drawing is issued in confidence for engineering information only and may not be reproduced or used to manufacture anything shown herein without permission from THE TECHNICAL MATERIEL CORPORATION to the user. This drawing is loaned for mutual assistance and is subject to recall at any time.

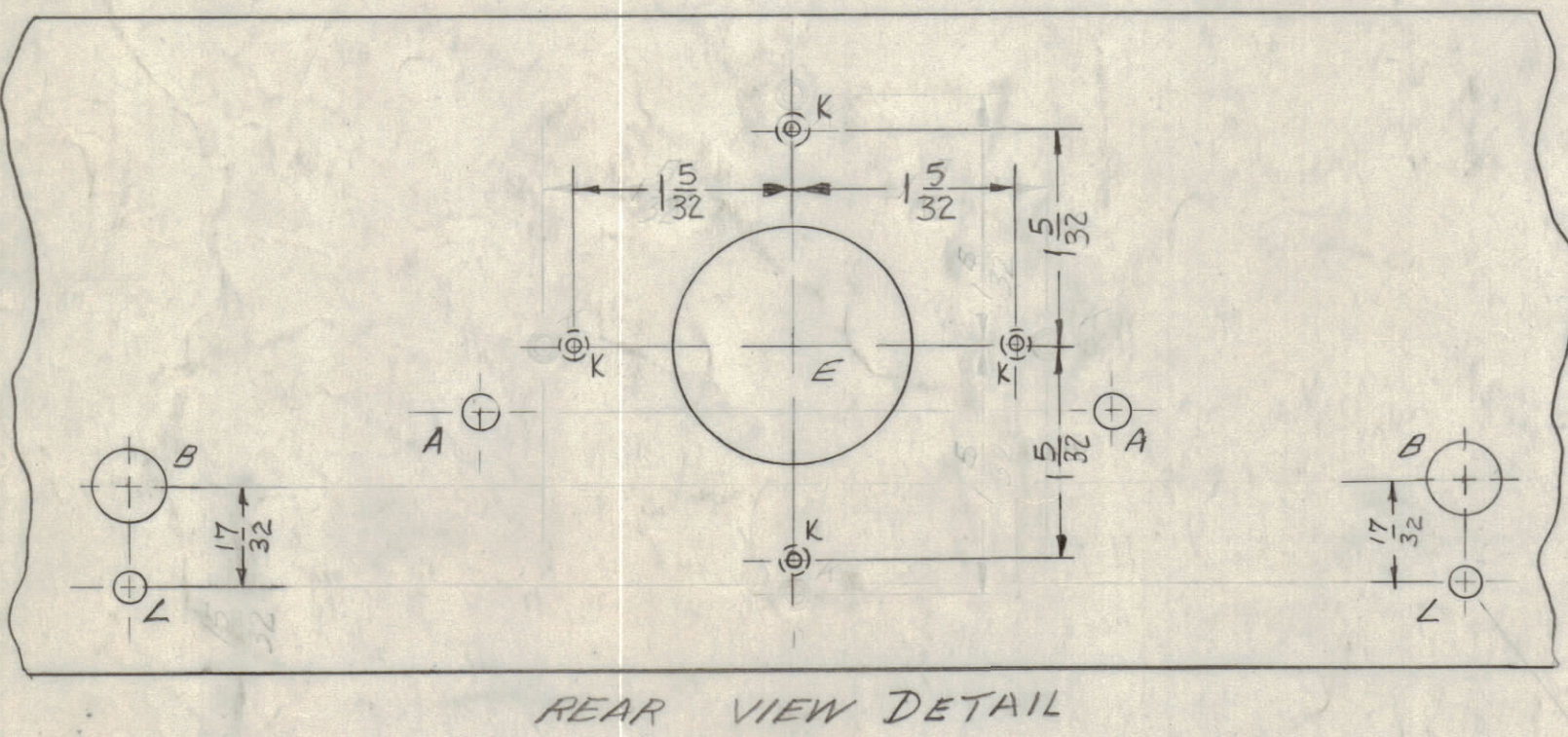
Property of:
THE TECHNICAL MATERIEL CORPORATION
MAMARONECK, NEW YORK



- A - $\frac{11}{64}$ DIA. 8 REQ.
- B - $\frac{3}{8}$ DIA. 2 "
- C - $\frac{15}{32}$ DIA. 2 "
- D - $\frac{31}{64}$ DIA. 1 "
- E - $1\frac{1}{4}$ DIA. 1 "
- F - $\frac{1}{4} \times \frac{7}{16}$ SLOT 4 "
- G - .076 DIA. 2 "



- K - DRILL & TAP $\frac{1}{8}$ DEEP FOR 6-32 ON REAR OF PANEL 4 REQ.
- L - DRILL $\frac{5}{32}$ DIA. HOLE ON REAR OF PANEL $\frac{1}{8}$ DEEP 2 REQ.



- MACHINING -**
- 1 - LATERAL BOW OF PANEL MUST BE KEPT TO .031 TOLERANCE
 - 2 - MILL ALL EDGES.
 - 3 - HOLES MUST BE DRILLED.
 - 4 - PANEL MUST BE FREE OF ALL MACHINING MARKS GOUGES & SCRATCHES. IF NECESSARY SAND FRONT OF PANEL WITH NO. 120 GRIT SANDPAPER.

- FINISH -**
- S404 YELLOW IRIDITE.
 - S114 ZINC CHROMATE PRIMER } FRONT &
 - S115 TMC SMOOTH GREY ENAMEL } EDGES ONLY.

DECIMALS	FRACTIONS
$\pm .05$	$\pm \frac{1}{64}$
$\pm .01$	$\pm \frac{1}{32}$
$\pm .005$	$\pm \frac{1}{64}$
	ANGLES $\pm 30'$

D	E2	DET. J, 2.220 DIA HOLE WAS $2\frac{1}{4}$ DIA.	2-10-65	13420	ACB		
C	G2	"D" HOLE DIA. WAS 1/2	5-15-64	11394	1510		
B	D6, D7	"G" HOLES WERE 1/8 DIA. C'SINK WAS 10-92	2-2-62	6307	G.D.L.		
A	D7	1" DIA. DIM. WAS $1\frac{25}{32}$, 2" DIA. DIM. WAS $2\frac{11}{16}$ WAS 3	11-21-61	5950	L. B.		
		67, 810 "C" HOLES WERE $13/32$, $13/32$ DIA. WAS $1\frac{1}{32}$ (ON 16 HOLES)					
SYM	ZONE	DESCRIPTION	DATE	CH. NO.	DRAFTS	CHECKER	ENG. APP.
UNLESS OTHERWISE SPECIFIED: DIMENSIONS ARE IN INCHES			SCALE DO NOT SCALE				
TOLERANCES ON FRACTIONS $\pm 1/64$ DECIMALS $\pm .005$ ANGLES $\pm 1/2^\circ$			MAXIMUM ALLOWABLE TOLERANCES HAVE BEEN DETERMINED AND ANY DEVIATIONS WILL BE CAUSE FOR REJECTION. REMOVE ALL BURRS & SHARP EDGES				

REF: LD-992 (8)

REQ. ITEM	PART NO.	DESCRIPTION	SYMBOL
1	3/16	STOCK SIZE	
	ALUMINUM	THE TECHNICAL MATERIEL CORP. MAMARONECK, NEW YORK	
		PANEL, FRONT, MACHINING	
		MATERIAL	
	2024-T3		
		HEAT TREAT. SPEC.	
		FINISH & SPEC. NO.	
		TYPE & TEMPER	
		DATE	
		USED ON	
		SECTION	
		MODEL	
		ASSY. NO.	
		DATE	
		PER UNIT	

MS-2700 D

MS-2700 D