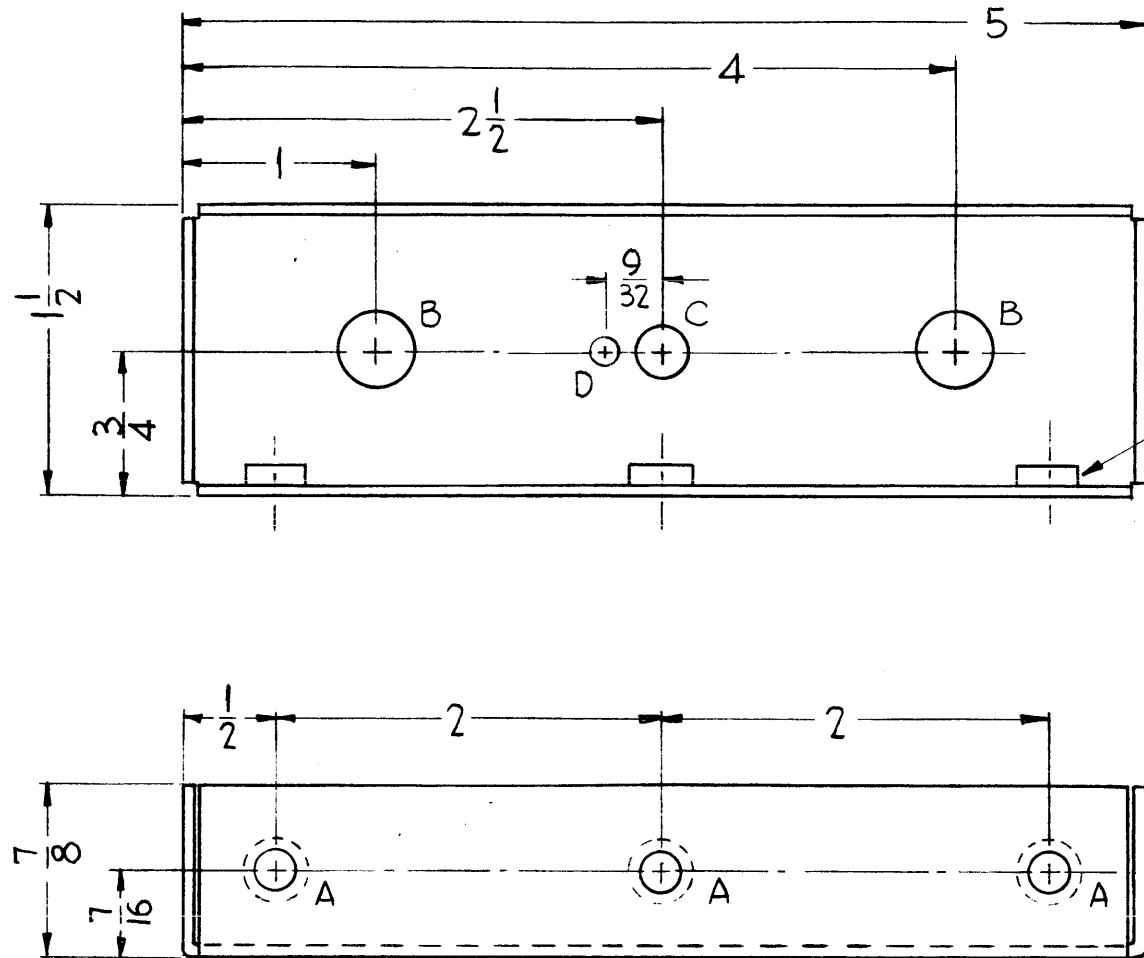
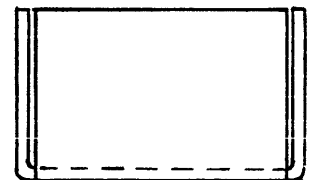


MS-2606 A



HOLES	REQ'D.
A ~ $\frac{191}{194}$ Dia. (To Mount Item 1)	3
B ~ $\frac{3}{8}$ Dia.	2
C ~ $\frac{1}{4}$ "	1
D ~ $\frac{1}{8}$ "	1

Mount Item 1  
In "A" Holes As Shown



ALL PERSONS RECEIVING THIS DRAWING  
 THE TECHNICAL MATERIEL CORPORATION claims  
 proprietary right in the material disclosed hereon.  
 This drawing is issued in confidence for engineering  
 information only and may not be reproduced or used  
 to manufacture anything shown hereon without per-  
 mission from THE TECHNICAL MATERIEL CORPORA-  
 TION to the user. This drawing is loaned for mutual  
 assistance and is subject to recall at any time.

Property of:  
 THE TECHNICAL MATERIEL CORPORATION  
 MAMARONECK, NEW YORK

REF. ~LD-944

SYM	DESCRIPTION	DATE	CH. NO.	DRAFTS	CHECKER	ENG. APP.
A	A" Holes Were .164 - .161	8-5-61	5389	G.D.L.	RU	16

UNLESS OTHERWISE SPECIFIED:  
 DIMENSIONS ARE IN INCHES  
 TOLERANCES ON FRACTIONS  $\pm 1/64$  DECIMALS  $\pm .005$  ANGLES  $\pm 1/2^\circ$

SCALE:  
 MAXIMUM ALLOWABLE TOLERANCES HAVE BEEN DETERMINED AND ANY DEVIATIONS WILL BE CAUSE FOR REJECTION.  
 REMOVE ALL BURRS AND SHARP EDGES

REQ. PER UNIT	MODEL	SECTION	ASS'Y. NO.	DATE
	PS-4A			6-7-61

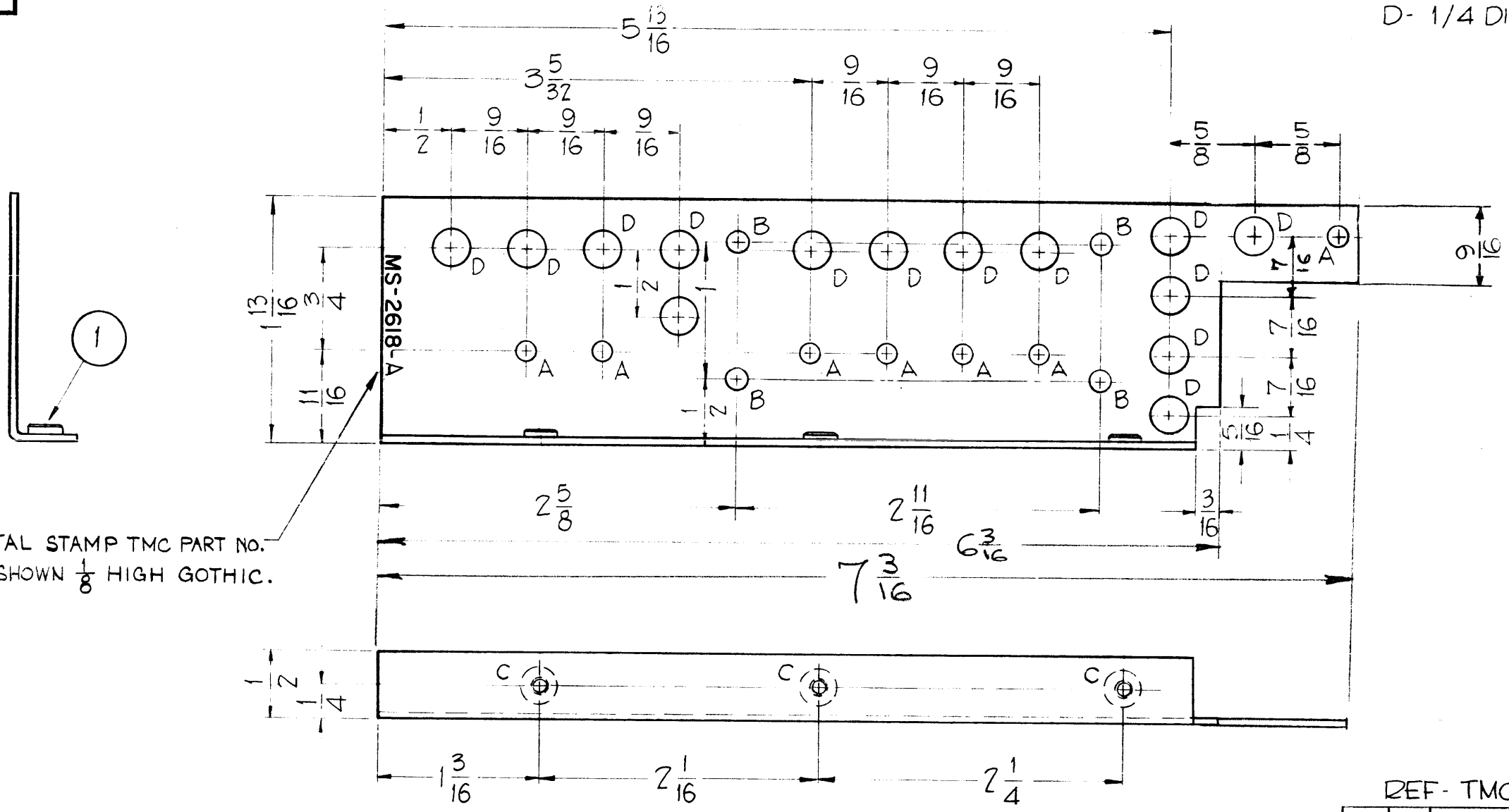
USED ON

REQ.	ITEM	PART NO.	DESCRIPTION	SYMBOL
3	1	NT-129-632-4	Nut, Round, Swage Type	
.064			THE TECHNICAL MATERIEL CORP. MAMARONECK, NEW YORK	
ALUMINUM			CHASSIS, POTENTIOMETER ASS'Y.	
5052-H32			D.P. Mammone	Ron Koh
TYPE & TEMPER		HEAT TREAT. SPEC.	DRAWN	CHECKER
YEL IRIDITE S404			RK	
FINISH & SPEC. NO.		ELEC. DES. APP.	MECH. DES. APP.	
				MS-2606 A

MS-2618 A

HOLES —

- A - 1/8 DIA. ————— 7 REQ.
- B - 9/64 DIA. ————— 4 REQ.
- C - .191 MIN., .194 MAX. DIAS — 3 REQ.
- D - 1/4 DIA. ————— 13 REQ.



METAL STAMP TMC PART NO. AS SHOWN 1/8 HIGH GOTHIC.

NOTICE TO PERSONS RECEIVING THIS DRAWING

THE TECHNICAL MATERIEL CORPORATION claims proprietary right in the material disclosed hereon. This drawing is issued in confidence for engineering information only and may not be reproduced or used to manufacture anything shown hereon without permission from THE TECHNICAL MATERIEL CORPORATION to the user. This drawing is loaned for mutual assistance and is subject to recall at any time.

Property of:  
THE TECHNICAL MATERIEL CORPORATION  
MAMARONECK, NEW YORK

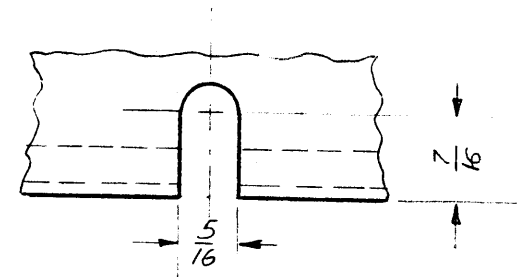
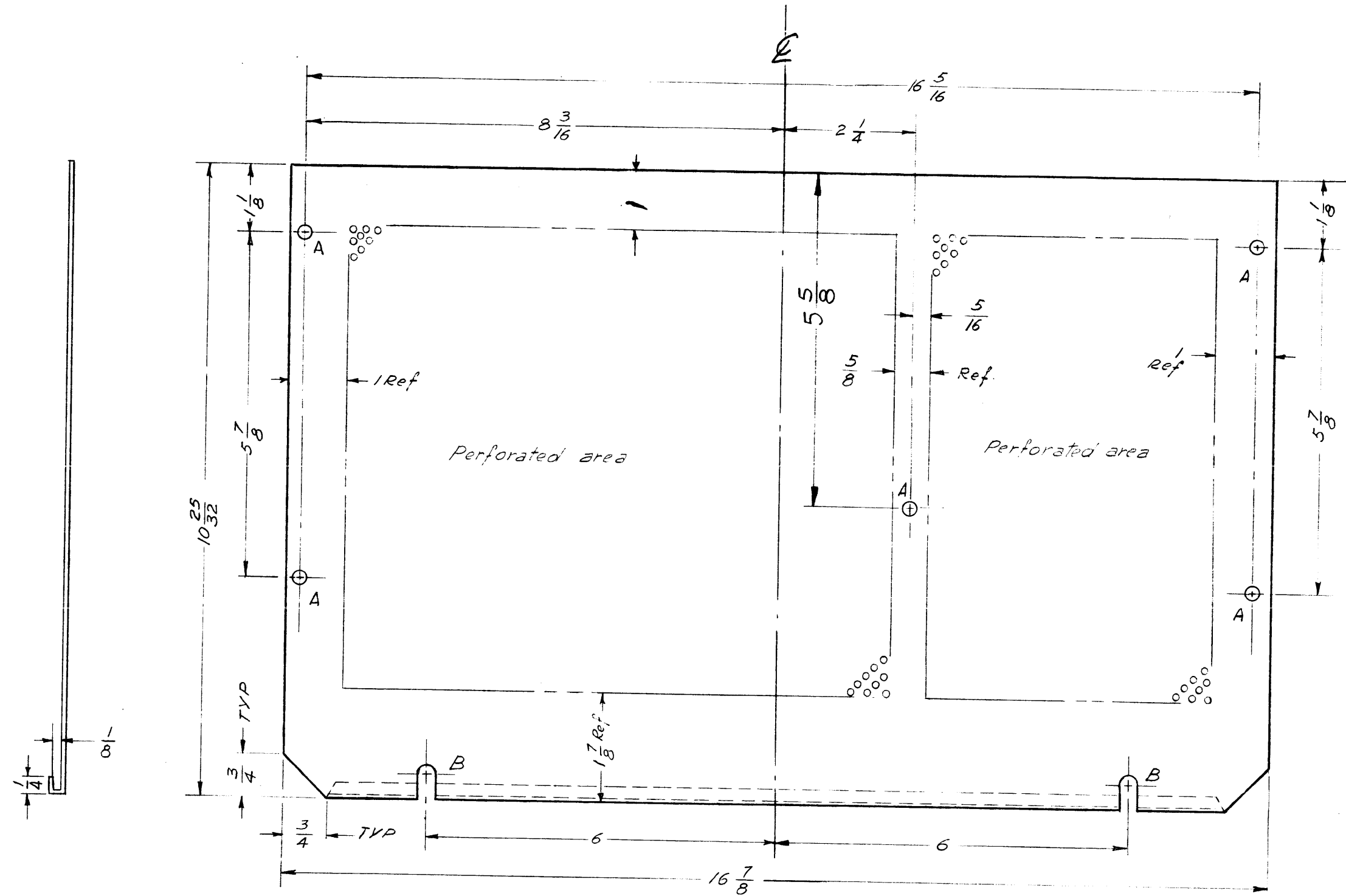
REF- TMC DWG NO. (1) LD-953

SYMBOL	DESCRIPTION	DATE	CH. NO.	DRAFTS	CHECKER	ENG. APP.
A	1" X 9/16 EXTENSION ADDED (A)HOLE ADDED (D)HOLE ADDED	4-18-62	6618	EG	HDe	[Signature]
UNLESS OTHERWISE SPECIFIED: DIMENSIONS ARE IN INCHES TOLERANCES ON FRACTIONS ± 1/64 DECIMALS ± .005 ANGLES ± 1/2° SCALE: DO NOT SCALE - MAXIMUM ALLOWABLE TOLERANCES HAVE BEEN DETERMINED AND ANY DEVIATIONS WILL BE CAUSE FOR REJECTION. REMOVE ALL BURRS AND SHARP EDGES						

REQ. PER UNIT	MODEL	SECTION	ASSY. NO.	DATE
1	GPE-1		8-4-61	
USED ON				

3	1	NT-129-632-4	NUT, ROUND, SWAGE TYPE	C
REQ.	ITEM	PART NO.	DESCRIPTION	SYMBOL
.064			THE TECHNICAL MATERIEL CORP.	
STOCK SIZE			MAMARONECK, NEW YORK	
ALUMINUM			SHIELD, R.F.	
MATERIAL			FEED THRU MOUNTING	
5052-H32		John C. Biele	[Signature]	[Signature]
TYPE & TEMPER	HEAT TREAT. SPEC.	DRAWN	CHECKER	FINAL APPROVAL
S404-IRIDITE		[Signature]	[Signature]	MS-2618 A
FINISH & SPEC. NO.		ELEC. DES. APP.	MECH. DES. APP.	

MS-2620  
A



"B" DETAIL 2 Req.

A - 1/4 (.250) DIA. 5 Req.

**NOTICE TO PERSONS RECEIVING THIS DRAWING**

THE TECHNICAL MATERIEL CORPORATION claims proprietary right in the material disclosed hereon. This drawing is issued in confidence for engineering information only and may not be reproduced or used to manufacture anything shown hereon without permission from THE TECHNICAL MATERIEL CORPORATION to the user. This drawing is loaned for mutual assistance and is subject to recall at any time.

Property of:  
THE TECHNICAL MATERIEL CORPORATION  
MAMARONECK, NEW YORK

PERFORATED ALUMINUM  
.072 HOLES ON 1/8 CENTERS

SYM	DESCRIPTION	DATE	CH. NO.	DRAFTS	CHECKER	ENG. APP.
A	BLANK SIZE REF: MS-1784-8, DELETED	4-25-63	8912	<i>[Signature]</i>	<i>[Signature]</i>	<i>[Signature]</i>

UNLESS OTHERWISE SPECIFIED:  
DIMENSIONS ARE IN INCHES  
TOLERANCES ON FRACTIONS ± 1/64 DECIMALS ± .05 ANGLES ± 1/2°

SCALE: 1/2

MAXIMUM ALLOWABLE TOLERANCES HAVE BEEN DETERMINED AND ANY DEVIATIONS WILL BE CAUSE FOR REJECTION. REMOVE ALL BURRS AND SHARP EDGES

REQ. PER UNIT	MODEL	SECTION	ASS'Y. NO.	DATE
	GPE-1			6-7-61

USED ON

REQ. ITEM	PART NO.	DESCRIPTION	SYMBOL
	.051 THK	THE TECHNICAL MATERIEL CORP. MAMARONECK, NEW YORK	
	PERFORATED ALUMINUM	COVER, BOTTOM	
	5052-H32	GPE-1	
	S-404 YELLOW IRIDITE		

TYPE & TEMPER: 5052-H32  
HEAT TREAT. SPEC.: S-404 YELLOW IRIDITE  
FINISH & SPEC. NO.: S-404 YELLOW IRIDITE

DRAWN: *[Signature]*  
CHECKER: *[Signature]*  
FINAL APPROVAL: *[Signature]*

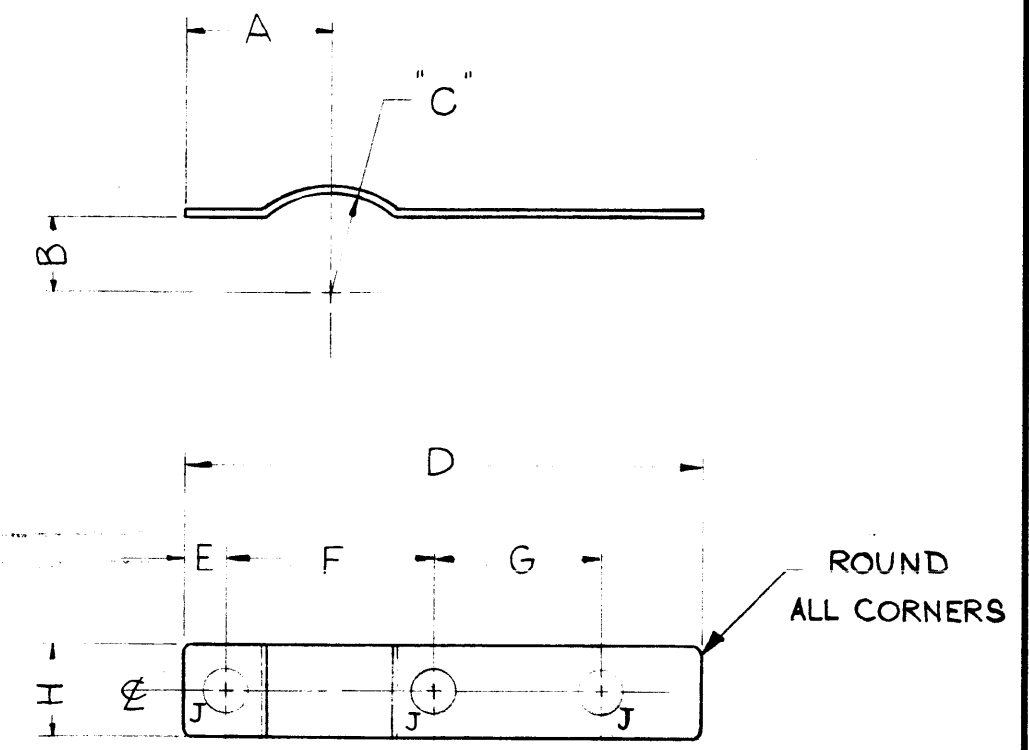
ELEC. DES. APP. MECH. DES. APP.

MS-2620 A



MS-2629 D	TMC PT. NO.	A ±.002	B ±.002	C +.002	D ±.002	E ±.002	F +.002	G +.002	H ±.002	J ±.003	FIRST USED
	MS-2629-1	.770	.520	.625	2.700	.215	1.110	.875	.468	.218 DIA.	AS-120 PI- SEC
	MS-2629-2	.750	.660	.725	2.500	.215	1.000	.875	.468	.218 DIA.	AS-120 -L" SEC
	MS-2629-3	.812	.796	.890	2.750	.215	1.250	.875	.562	.234 DIA	AS-123
	MS-2629-4	.750	.660	.725	2.500	.215	1.015	.875	.468	.234 DIA	AS-124

STANDARD DRAWING



NOTE - ALL DIMENSIONS APPLY AFTER PLATING.

FINISHING NOTE —  
 S-245 - SILVER PLATE, BRIGHT  
 S-423 - IRIDITE, 18-P SILVER KOTE

SYM	DESCRIPTION	DATE	CH. NO.	DRAFTS	CHECKER	ENG. APP.
D	MS-2629-3 & 4 ADDED	7-16-63	9555			
C	ON MS-2629-2 (H) WAS 4.68	2-23-62	6433	H.L.		
B	ON MS-2629-2 (C) WAS 750	12-28-61	6107	H.L.		
A	MS-2629-2 Added; Chart Revised	12-12-61	6031	H.L.		

Property of  
 THE TECHNICAL MATERIEL CORPORATION  
 MAMARONECK, NEW YORK

UNLESS OTHERWISE SPECIFIED:  
 DIMENSIONS ARE IN INCHES  
 TOLERANCES ON  
 FRACTIONS ± 1/64    DECIMALS ± .005    ANGLES ± 1/2°

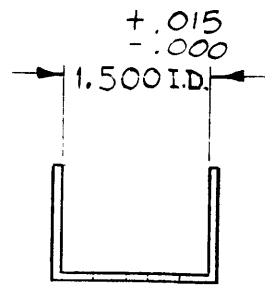
SCALE: — DO NOT SCALE —  
 MAXIMUM ALLOWABLE TOLERANCES HAVE BEEN DETERMINED AND ANY DEVIATIONS WILL BE CAUSE FOR REJECTION.  
 REMOVE ALL BURRS AND SHARP EDGES

REQ. PER UNIT	64	GPT-40K	AX-267		
		MODEL	SECTION	ASS'Y. NO.	DATE
		USED ON			

REQ. ITEM	PART NO.	DESCRIPTION	SYMBOL
	.020 THICK	THE TECHNICAL MATERIEL CORP. MAMARONECK, NEW YORK	
	STOCK SIZE		
	COPPER	CONTACT, BANDSWITCH	
	MATERIAL		
	SOFT		
	TYPE & TEMPER	HEAT TREAT. SPEC.	FINISH & SPEC. NO.
	SEE NOTE		
		ELEC. DES. APP.	MECH. DES. APP.

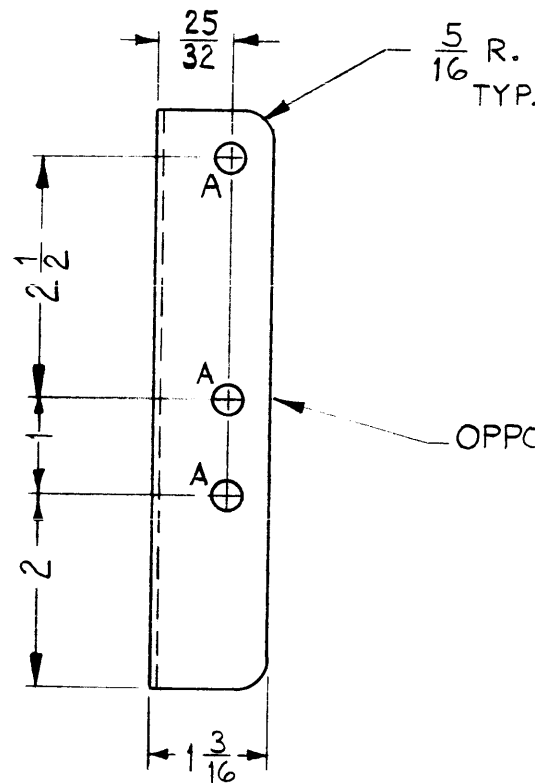
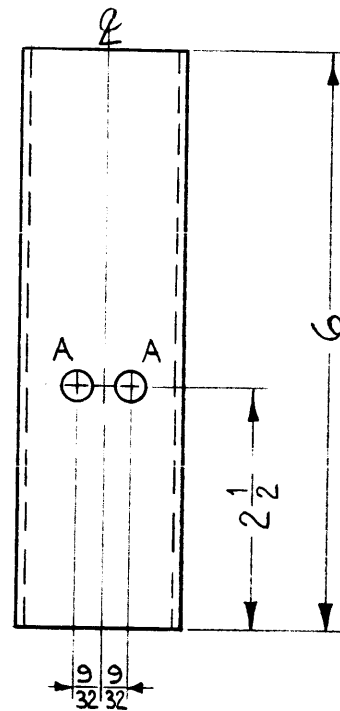
John C. Biele    W.A.F.    L.B./E  
 DRAWN    CHECKER    FINAL APPROVAL  
 MS-2629 D

MS-2632



A ~  $\frac{5}{16}$  DIA.

8 REQ.



OPPOSITE SIDE IDENTICAL

FINISH ~

S-245 - SILVER PLATE, BRIGHT.

S-423 - IRIDITE 18-P SILVER KOTE.

ALL PERSONS RECEIVING THIS DRAWING  
 THE TECHNICAL MATERIEL CORPORATION claims  
 copyright in the material disclosed hereon.  
 This drawing is issued in confidence for engineering  
 information only and may not be reproduced or used  
 to manufacture anything shown hereon without per-  
 mission from THE TECHNICAL MATERIEL CORPORA-  
 TION to the user. This drawing is loaned for mutual  
 assistance and is subject to recall at any time.

Property of:  
 THE TECHNICAL MATERIEL CORPORATION  
 MAMARONECK, NEW YORK

SYM	DESCRIPTION	DATE	CH. NO.	DRAFTS	CHECKER	ENG. APP.
UNLESS OTHERWISE SPECIFIED: DIMENSIONS ARE IN INCHES TOLERANCES ON FRACTIONS $\pm 1/64$ DECIMALS $\pm .005$ ANGLES $\pm 1/2^\circ$		SCALE: 2:1 (DO NOT SCALE) MAXIMUM ALLOWABLE TOLERANCES HAVE BEEN DETERMINED AND ANY DEVIATIONS WILL BE CAUSE FOR REJECTION. REMOVE ALL BURRS AND SHARP EDGES				

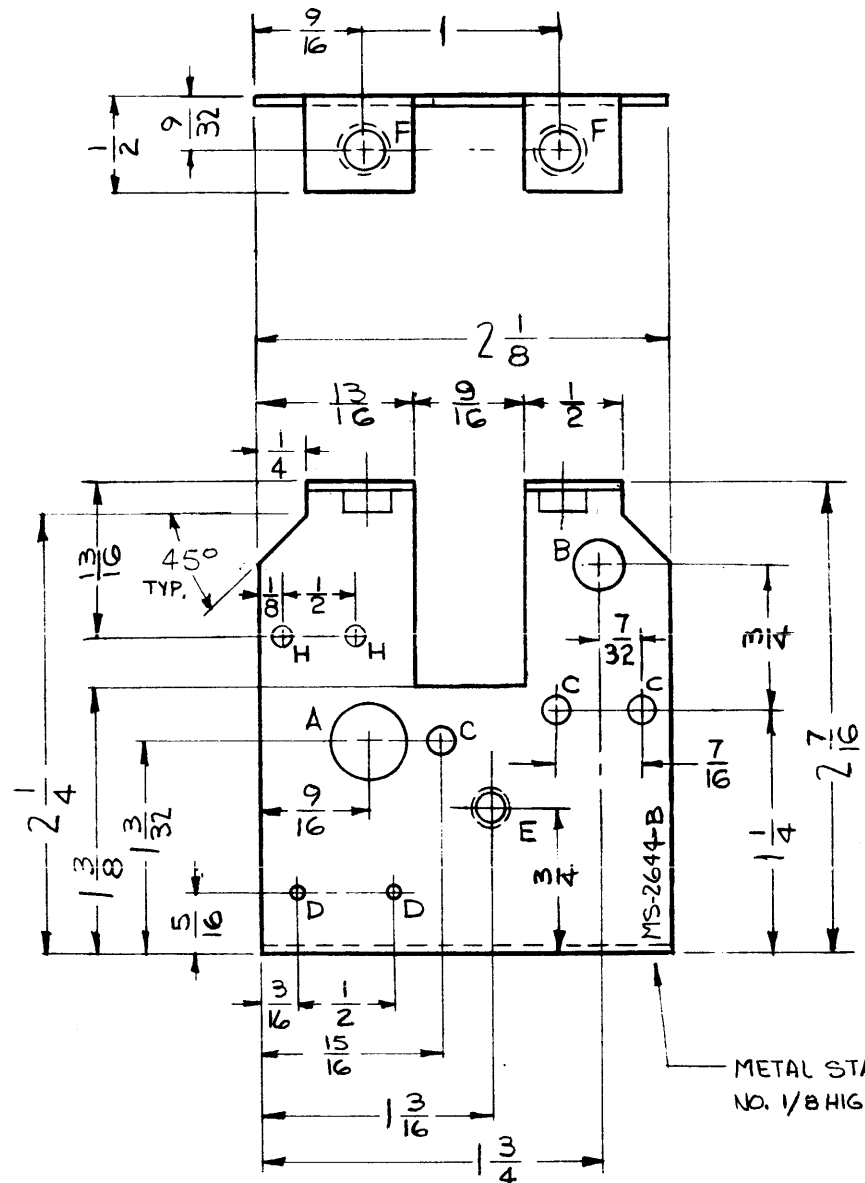
REQ. PER UNIT	MODEL	SECTION	ASS'Y. NO.	DATE
	GPT-40K	AX-209		7-10-61

REQ. ITEM	PART NO.	DESCRIPTION	SYMBOL
	1/16	THE TECHNICAL MATERIEL CORP. MAMARONECK, NEW YORK	
	STOCK SIZE		
	COPPER	SUPPORT BRACKET, WAFER	
	MATERIAL		
		WAF	JB
		LB	JB
	SEE NOTE	DRAWN	CHECKER
		FINAL APPROVAL	
		ELEC. DES. APP.	MECH. DES. APP.
			MS-2632

MS-2644 B

REVISIONS

SYM	DESCRIPTION	DATE	E.M.N. NO.	DRAFT	CHKD	APPD
A	REDRAWN & REVISED (WAS SIZE 1)	2-15-63	8271			
B	2"H" HOLES ADDED, CUTOUT REVISED	2-28-63	8366			

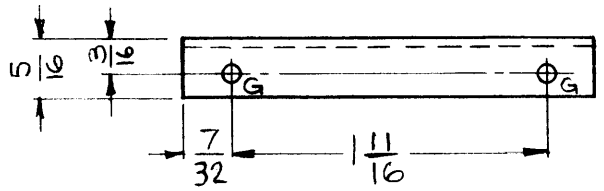
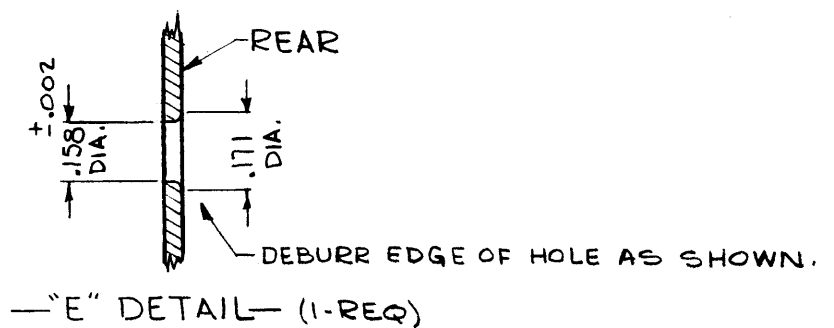


② MOUNT ITEM (2) IN ALL "F" HOLES AS SHOWN AFTER FINISHING.

① MOUNT ITEM (1) IN "E" HOLE AS SHOWN AFTER FINISHING.

METAL STAMP TMC PART NO. 1/8 HIGH, GOTHIC.

LEGEND		
HOLE	DESCRIPTION	REQ.
A	3/8 DIA.	1
B	1/4 DIA.	1
C	1/8 DIA.	3
D	1/16 DIA.	2
E	SEE DETAIL	1
F	.191-.194 DIA	2
G	#50 (.070) DRILL	2
H	3/32 DIA.	2



PROPERTY OF THE TECHNICAL MATERIEL CORPORATION  
 THE TECHNICAL MATERIEL CORPORATION  
 MAMARONECK, NEW YORK

PROPERTY OF:  
 THE TECHNICAL MATERIEL CORPORATION  
 MAMARONECK, NEW YORK

PROPERTY OF THE TECHNICAL MATERIEL CORPORATION claims proprietary right in the material disclosed herein. This drawing is loaned in confidence for engineering information only and may not be reproduced or used to manufacture anything shown herein without permission from THE TECHNICAL MATERIEL CORPORATION to the user. This drawing is loaned for mutual assistance and is subject to recall at any time.

USE MATERIAL THICKNESS FOR MAX. RADIUS ON ALL BENDS UNLESS OTHERWISE SPECIFIED

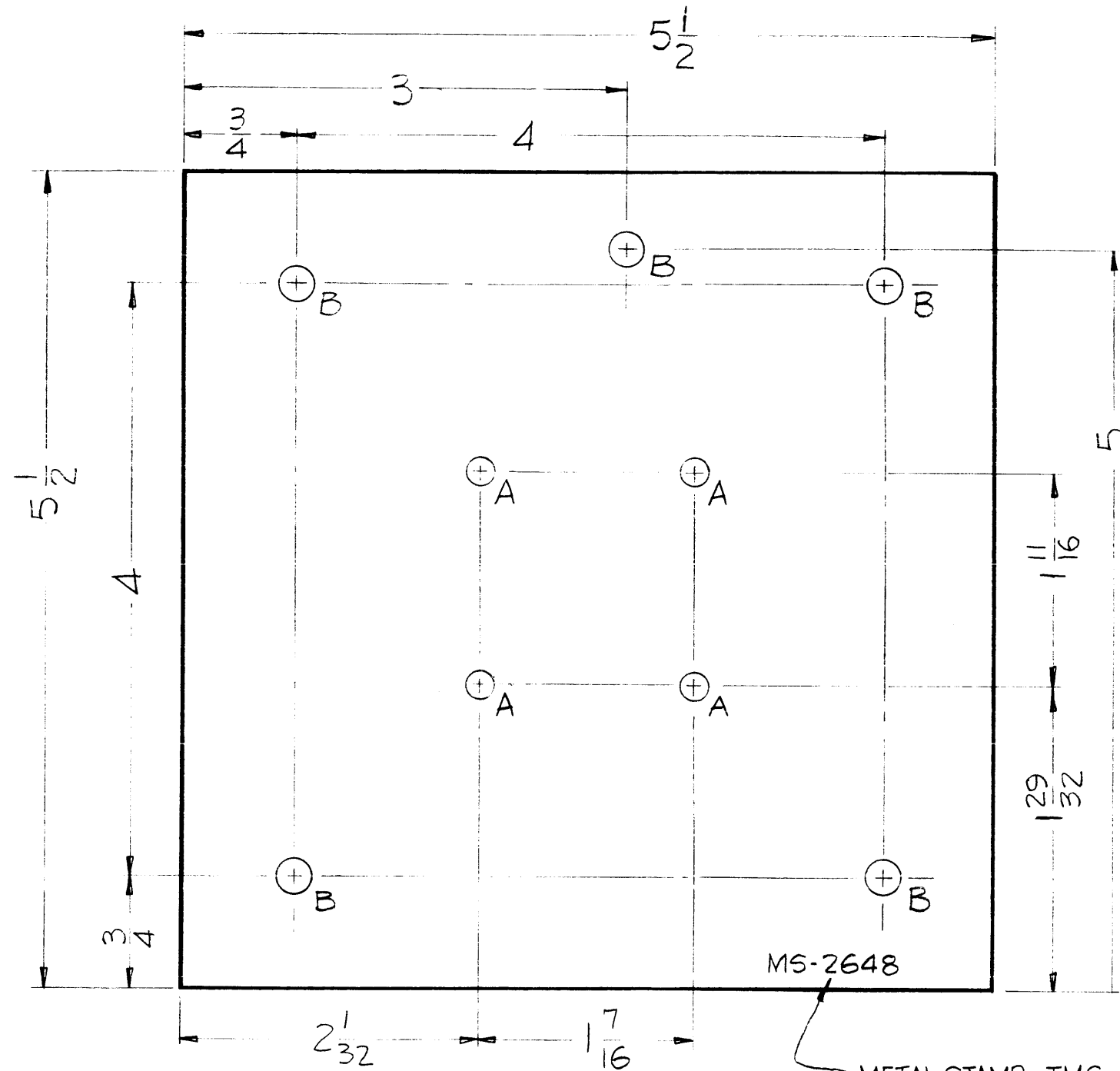
NOTES

1	GPR-92	A-2120
Q'TY./UNIT	MODEL USED ON	ASS'Y. NO.
SCALE	CODE	
FULL		
THE CONTENTS OF THIS DRAWING ARE THE EXCLUSIVE PROPERTY OF THE TECHNICAL MATERIEL CORP. ITS UNAUTHORIZED USE OR REPRODUCTION IN WHOLE OR IN PART IS STRICTLY FORBIDDEN.		

REQ'D.	ITEM	PART NUMBER	DESCRIPTION	SYMBOL
2	2	NT-129-632-3	NUT, ROUND, SWAGE TYPE	F
1	1	TE-169-1	FEED-THRU, TEFLON	E

LIST OF MATERIAL				
MATERIAL		THE TECHNICAL MATERIEL CORP. MAMARONECK, NEW YORK		
FINISH		TITLE		
.050, COPPER TYPE & TEMPER: COMMERCIAL SOFT		BRACKET, COMPONENT MTG.		
UNLESS OTHERWISE SPECIFIED DIMENSIONS ARE IN INCHES AND INCLUDE CHEMICALLY APPLIED OR PLATED FINISHES		DRAWN G. Jensen	DATE 2-15-63	FINAL APPROVAL JFH
DECIMALS .X ± .05 .XX ± .01 .XXX ± .005		CHECKED JMA	DATE 2-18-63	DATE 7-5-63
FRACTIONS ± 1/64 ANGLES ± 0° 30'		ELECT. PART JMA	DATE	MS-2644
TOLERANCES		MECH. PART JMA	DATE	B
				SHEET
				REV. LTR.

MS-2648



HOLES  
 A ~ 11/64 (.171) D.      REQ. 4  
 B ~ 7/32 (.218) D.      REQ. 5

PROPERTY OF THE TECHNICAL MATERIEL CORPORATION  
 THIS DRAWING IS LOANED FOR MUTUAL ASSISTANCE AND IS SUBJECT TO RECALL AT ANY TIME.

Property of:  
 THE TECHNICAL MATERIEL CORPORATION  
 MAMARONECA, NEW YORK

METAL STAMP TMC PART NO. 1/8 HIGH GOTHIC.

SYM	DESCRIPTION	DATE	CH. NO.	DRAFTS	CHECKER	ENG. APP.

UNLESS OTHERWISE SPECIFIED:  
 DIMENSIONS ARE IN INCHES  
 TOLERANCES ON FRACTIONS ± 1/64    DECIMALS ± .005    ANGLES ± 1/2°

SCALE:  
 MAXIMUM ALLOWABLE TOLERANCES HAVE BEEN DETERMINED AND ANY DEVIATIONS WILL BE CAUSE FOR REJECTION.  
 REMOVE ALL BURRS AND SHARP EDGES

REQ. PER UNIT	MODEL	SECTION	ASS'Y. NO.	DATE
1	VRA-5			8-31-61
1	VRA-6			8-31-61

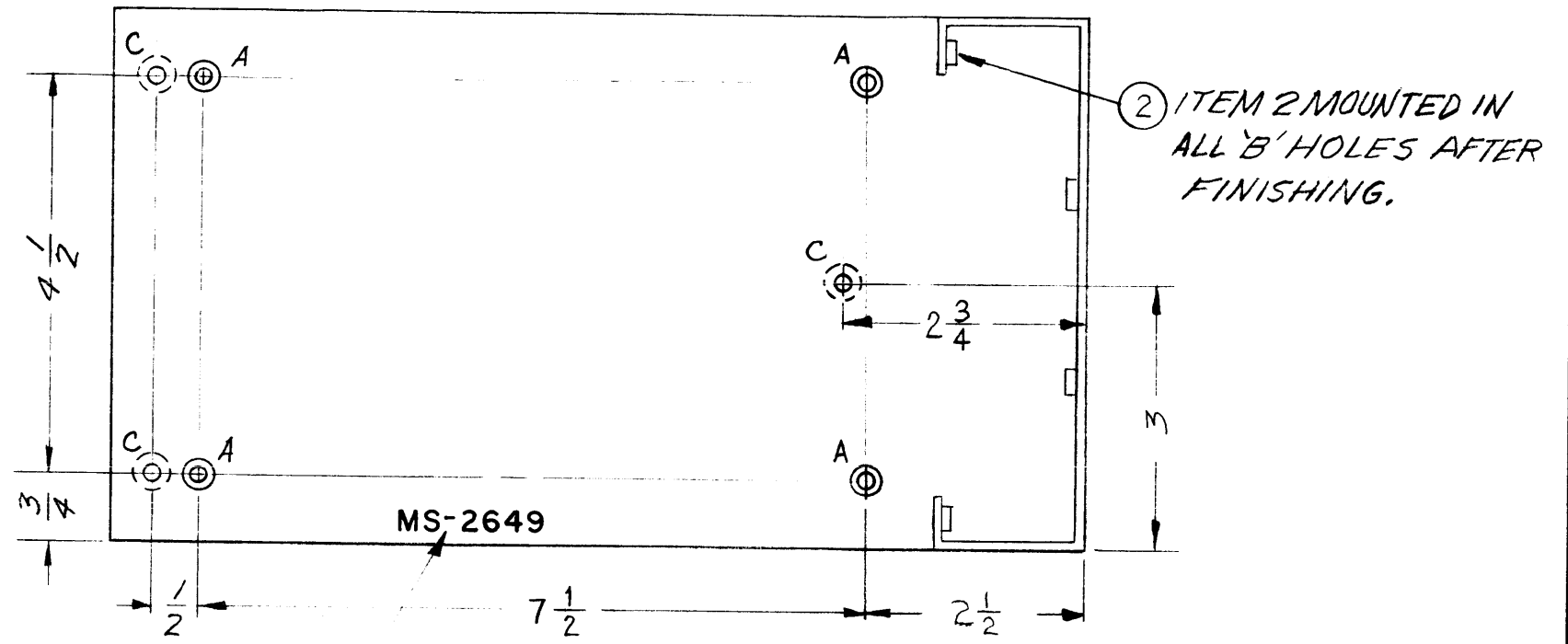
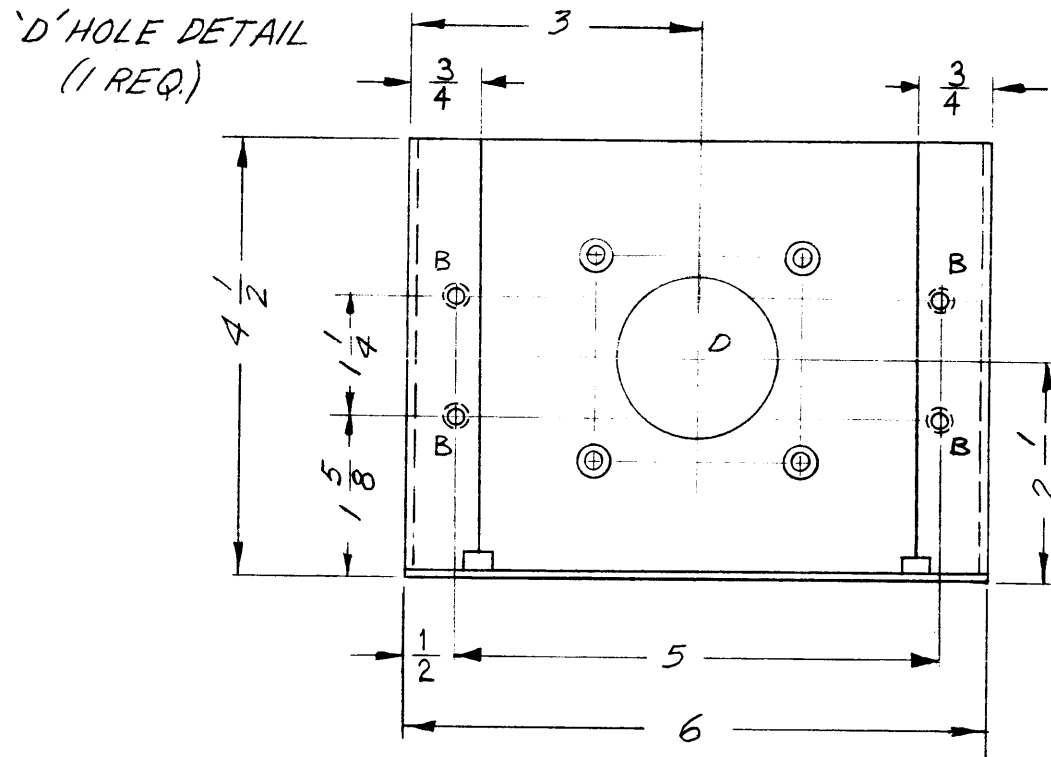
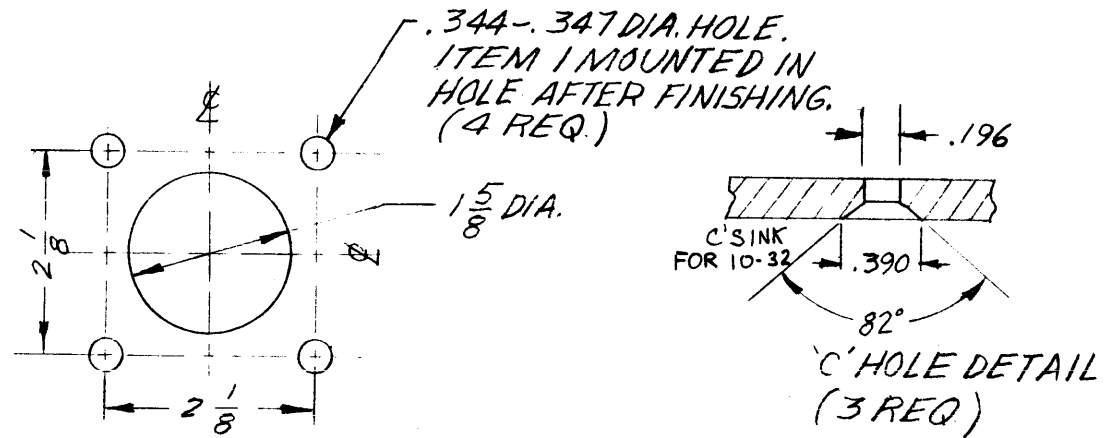
REQ.	ITEM	PART NO.	DESCRIPTION			SYMBOL
		.064	THE TECHNICAL MATERIEL CORP.			
		STOCK SIZE	MAMARONECK, NEW YORK			
		ALUMINUM	PLATE, TRANSFORMER MOUNT			
		MATERIAL				
		5052-H32	DD Main	WB		
		TYPE & TEMPER	DRAWN	CHECKER	FINAL APPROVAL	
		5-404 YELLOW IRIDITE	A.R.F.		MS-2648	
		FINISH & SPEC. NO.	ELEC. DES. APP.	MECH. DES. APP.		



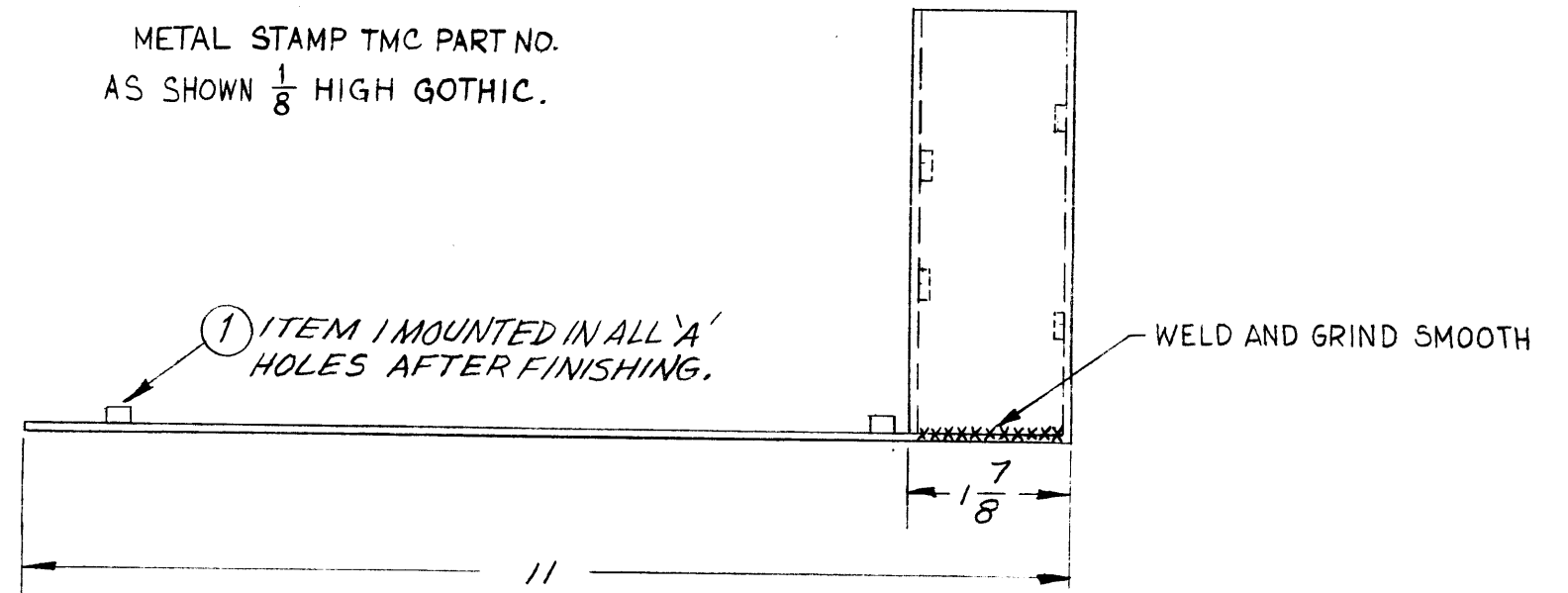
MS-2649 A

**HOLES**

- A- .344-.347 DIA.
- B- .250-.253 DIA.



METAL STAMP TMC PART NO.  
AS SHOWN 1/8 HIGH GOTHIC.



USE MATERIAL THICKNESS FOR MAX. RADIUS  
ON ALL BENDS UNLESS OTHERWISE SPECIFIED

MOUNT INSERTS AFTER FINISHING

SYM	DESCRIPTION	DATE	CH. NO.	DRAFTS	CHECKER	ENG. APP.
1	"AND GRIND SMOOTH" ADDED TO WELD NOTE	11-11-61	5855	G.D.L.	<i>[Signature]</i>	<i>[Signature]</i>

UNLESS OTHERWISE SPECIFIED:  
DIMENSIONS ARE IN INCHES  
TOLERANCES ON FRACTIONS ± 1/64 DECIMALS ± .005 ANGLES ± 1/2°

SCALE: 1/2" = 1"

MAXIMUM ALLOWABLE TOLERANCES HAVE BEEN DETERMINED AND ANY DEVIATIONS WILL BE CAUSE FOR REJECTION. REMOVE ALL BURRS AND SHARP EDGES

REQ. PER UNIT	MODEL	SECTION	ASS'Y. NO.	DATE
	TR-167			9-14-61

4	2	NT-129-1032-4	NUT, ROUND, SWAGE TYPE	B
8	1	NT-129-420-6	NUT, ROUND, SWAGE TYPE	A
REQ. ITEM	PART NO.		DESCRIPTION	SYMBOL
1/8			THE TECHNICAL MATERIEL CORP. MAMARONECK, NEW YORK	
ALUMINUM			PLATE, TRANSFORMER, MTG.	
MATERIAL				
5052-H32			<i>wh</i>	<i>[Signature]</i>
TYPE & TEMPER	HEAT TREAT. SPEC.	DRAWN	CHECKER	FINAL APPROVAL
5-404 YEL. IRIDITE		<i>aa</i>		<i>[Signature]</i>
FINISH & SPEC. NO.			ELEC. DES. APP.	MECH. DES. APP.
			<i>MS-2649</i>	<i>A</i>

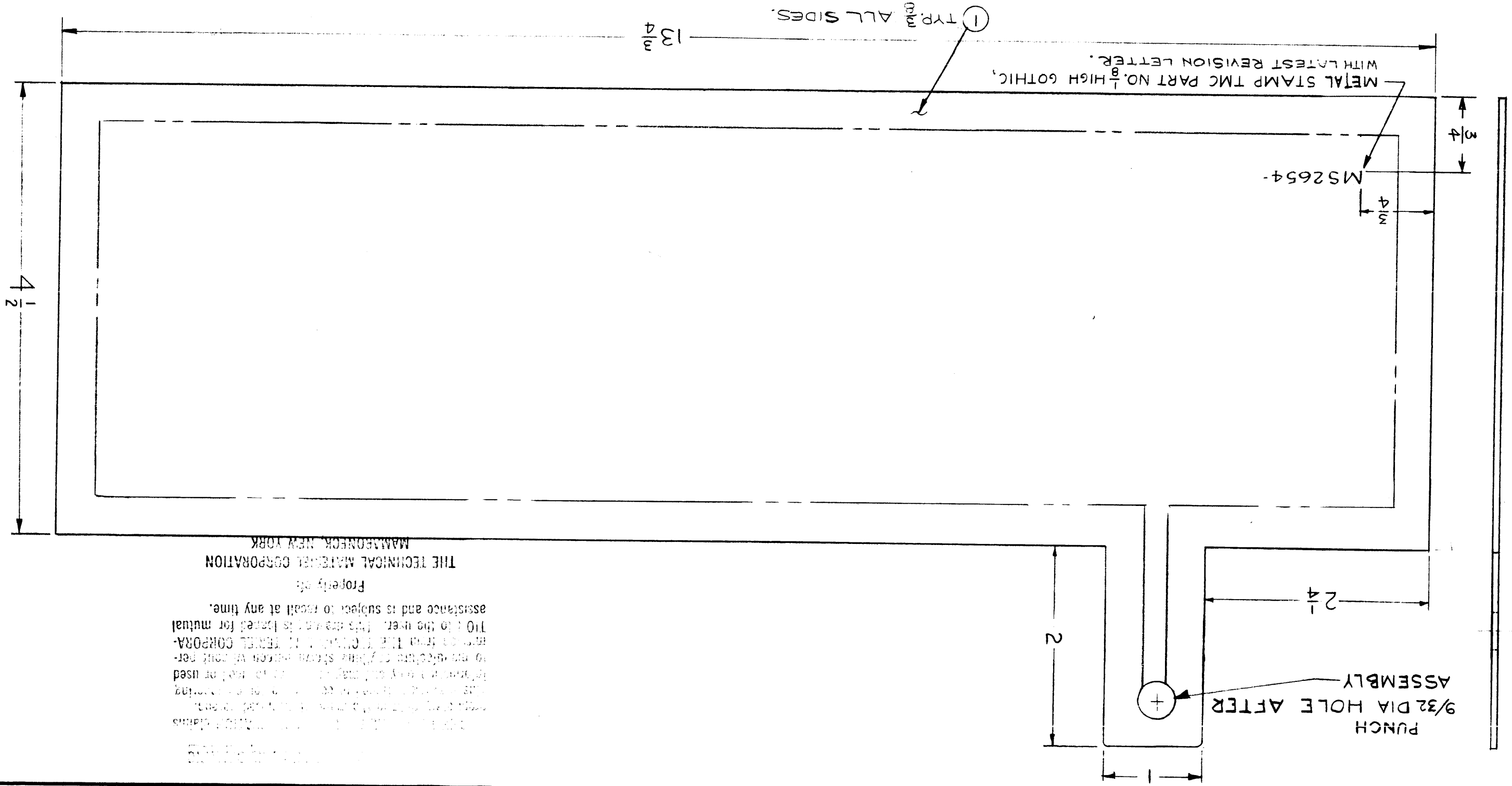
SYM	DESCRIPTION	SCALE:			
		DATE	CH. NO.	DRAFTS	CHECKER
C	1.1 ADDED & RELOCATED METAL STAMP	12-5-67	18629	HS	FB
B	1.0 DIM. ADP. WITH LATEST REV. LETT. ADD	8.17.64	11441	YS	FB
A	2 DIM. WAS 1-1/4	11-30-61	5981	E.F.	FB

UNLESS OTHERWISE SPECIFIED:  
DIMENSIONS ARE IN INCHES  
TOLERANCES ON  
FRACTIONS ± 1/64 DECIMALS ± .008 ANGLES ± 1/2°  
MAXIMUM ALLOWABLE TOLERANCES HAVE  
BEEN DETERMINED AND ANY DEVIATIONS  
WILL BE CAUSE FOR REJECTION.  
REMOVE ALL BURRS AND SHARP EDGES

USED ON		
UNIT	MODEL	SECTION
2	TRC-20K	
REQ. PER	ASS'Y. NO.	DATE
		9-26-61

FINISH & SPEC. NO.		ELEC. DES. APP.		MECH. DES. APP.	
SILVER PLATED S245		RM		FB	
TYPE & TEMPER		DRAWN		CHECKER	
		LT		FB	
MATERIAL		FINAL APPROVAL			
COPPER		MS-2654 C			
STOCK SIZE					
.012					
THE TECHNICAL MATERIEL CORP. MAMARONECK, NEW YORK					
SHIELD, PRIMARY & SECONDARY					
REQ. ITEM		PART NO.		DESCRIPTION	
X	1	TA108-5		INS. TAPE, EL-6L	

NOTE ~ ROUND ALL EDGES.



Property of THE TECHNICAL MATERIEL CORPORATION  
MAMARONECK, NEW YORK

THIS DRAWING IS THE PROPERTY OF THE TECHNICAL MATERIEL CORPORATION. IT IS LOANED TO THE USER FOR HIS USE ONLY AND IS NOT TO BE REPRODUCED OR TRANSMITTED IN ANY FORM OR BY ANY MEANS, ELECTRONIC OR MECHANICAL, INCLUDING PHOTOCOPYING, RECORDING, OR BY ANY INFORMATION STORAGE AND RETRIEVAL SYSTEM. THE USER AGREES TO HOLD THE TECHNICAL MATERIEL CORPORATION HARMLESS FROM ANY AND ALL CLAIMS, DAMAGES, LOSSES AND EXPENSES, INCLUDING REASONABLE ATTORNEY'S FEES, THAT MAY BE ASSERTED AGAINST THE TECHNICAL MATERIEL CORPORATION AS A RESULT OF THE USER'S NEGLIGENCE OR WILLFUL MISUSE OF THIS DRAWING. THIS DRAWING IS LOANED TO THE USER FOR HIS USE ONLY AND IS NOT TO BE REPRODUCED OR TRANSMITTED IN ANY FORM OR BY ANY MEANS, ELECTRONIC OR MECHANICAL, INCLUDING PHOTOCOPYING, RECORDING, OR BY ANY INFORMATION STORAGE AND RETRIEVAL SYSTEM. THE USER AGREES TO HOLD THE TECHNICAL MATERIEL CORPORATION HARMLESS FROM ANY AND ALL CLAIMS, DAMAGES, LOSSES AND EXPENSES, INCLUDING REASONABLE ATTORNEY'S FEES, THAT MAY BE ASSERTED AGAINST THE TECHNICAL MATERIEL CORPORATION AS A RESULT OF THE USER'S NEGLIGENCE OR WILLFUL MISUSE OF THIS DRAWING.

MS-2654 C

SYMBOL		DESCRIPTION		DATE		CH. NO.	DRAFTS	CHECKER	ENG. APP.
A		9 DIM. WAS 9-1/4; 9-3/4 DIM. WAS 10/16R ADDED		1-4-62		6151	MRG	MRG	MRG
UNLESS OTHERWISE SPECIFIED: DIMENSIONS ARE IN INCHES TOLERANCES ON FRACTIONS ± 1/64 DECIMALS ± .005 OR ANGLES ± 1/20									
MAXIMUM ALLOWABLE TOLERANCES HAVE BEEN DETERMINED AND ANY DEVIATIONS WILL BE CAUSE FOR REJECTION. REMOVE ALL BURRS AND SHARP EDGES									

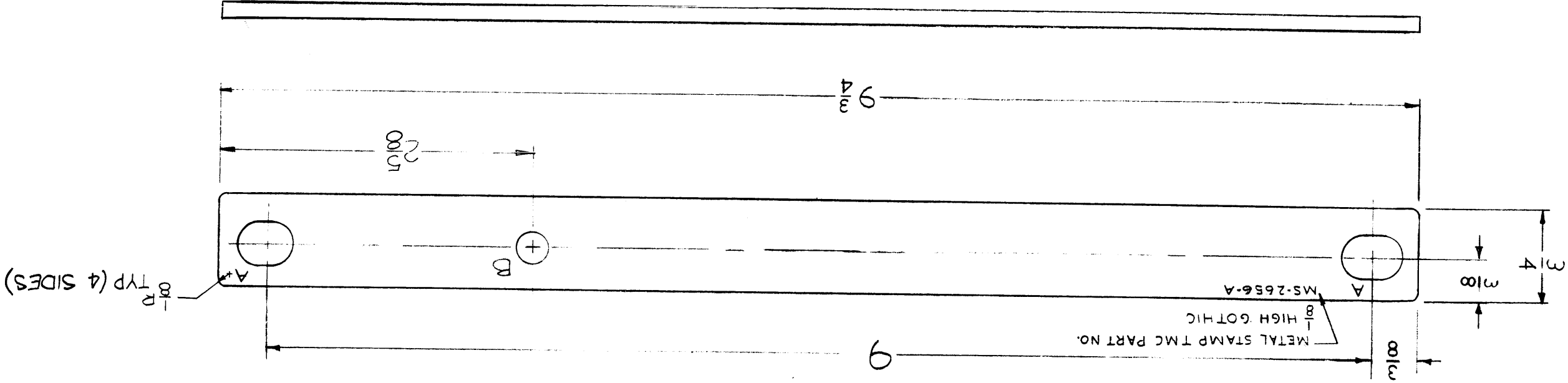
USED ON		
REQ. PER UNIT	MODEL	SECTION
1	TRC-20K	
ASSY. NO.	DATE	
	9-27-61	

FINISH & SPEC. NO.		ELEC. DES. APP.	MECH. DES. APP.
SILVER PLATED S245		MRG	MRG
TYPE & TEMPER		HEAT TREAT. SPEC.	DRAWN
			LS
MATERIAL		CHECKER	FINAL APPROVAL
BRASS		MRG	MRG
STOCK SIZE		600 OHM	
PART NO.		STRAP CONNECTING	
DESCRIPTION		THE TECHNICAL MATERIEL CORP. MAMARONECK, NEW YORK	
SYMBOL		MS-2656A	

Project of  
THE TECHNICAL MATERIEL CORPORATION  
MAMARONECK, NEW YORK

1-01 to the user. The user is to be held responsible for mutual assistance and is advised to consult at any time.

It is the policy of THE TECHNICAL MATERIEL CORPORATION to manufacture and sell its products without patent protection. It is the policy of THE TECHNICAL MATERIEL CORPORATION to use the best materials and workmanship available.

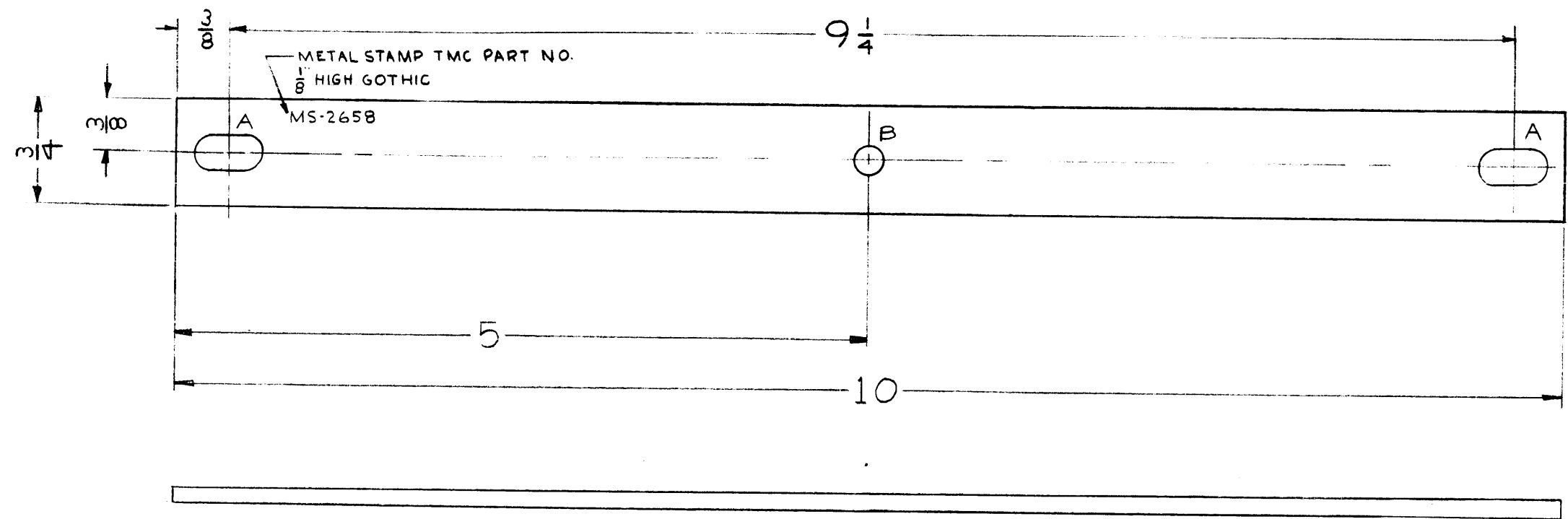


RECD. 2  
HOLE 1  
A-13/32 x 1/2 SLOTT  
B-1/4 D

MS-2656A

MS-2658

HOLE REQ'D  
 A-  $\frac{5}{32} \times \frac{1}{2}$  SLOT 2  
 B-  $\frac{1}{4}$  DIA. 1



PROPERTY OF THE TECHNICAL MATERIEL CORPORATION  
 MAMARONECK, NEW YORK  
 THIS DRAWING IS THE PROPERTY OF THE TECHNICAL MATERIEL CORPORATION  
 AND IS TO BE KEPT IN CONFIDENCE. IT IS TO BE USED ONLY FOR THE  
 PURPOSES FOR WHICH IT WAS PREPARED. IT IS TO BE DESTROYED  
 IMMEDIATELY UPON THE COMPLETION OF THE PROJECT FOR WHICH IT WAS  
 PREPARED. NO REPRODUCTION OR TRANSMISSION OF THIS DRAWING  
 IN ANY FORM OR BY ANY MEANS, ELECTRONIC OR MECHANICAL, INCLUDING  
 PHOTOCOPYING, RECORDING, OR BY ANY INFORMATION STORAGE AND  
 RETRIEVAL SYSTEM, IS PERMITTED WITHOUT THE WRITTEN PERMISSION  
 OF THE TECHNICAL MATERIEL CORPORATION. THE USER AGREES TO  
 HOLD THE TECHNICAL MATERIEL CORPORATION HARMLESS FROM AND  
 AGAINST ALL CLAIMS, DAMAGES, LOSSES AND EXPENSES, INCLUDING  
 REASONABLE ATTORNEY'S FEES, THAT MAY BE ASSERTED AGAINST THE  
 TECHNICAL MATERIEL CORPORATION AS A RESULT OF THE USER'S  
 FAILURE TO COMPLY WITH THE ABOVE TERMS AND CONDITIONS.

THE TECHNICAL MATERIEL CORPORATION  
 MAMARONECK, NEW YORK

SYM	DESCRIPTION	DATE	CH. NO.	DRAFTS	CHECKER	ENG. APP.

UNLESS OTHERWISE SPECIFIED:  
 DIMENSIONS ARE IN INCHES  
 TOLERANCES ON FRACTIONS  $\pm 1/64$  DECIMALS  $\pm .05$  ANGLES  $\pm 1/2^\circ$

SCALE:  
 MAXIMUM ALLOWABLE TOLERANCES HAVE BEEN DETERMINED AND ANY DEVIATIONS WILL BE CAUSE FOR REJECTION. REMOVE ALL BURRS AND SHARP EDGES

2	TRC-20K				9-27-61
REQ. PER UNIT	MODEL	SECTION	ASS'Y. NO.	DATE	
	USED ON				

REQ. ITEM	PART NO.	DESCRIPTION	SYMBOL
	$\frac{1}{8}$	THE TECHNICAL MATERIEL CORP. MAMARONECK, NEW YORK	
	STOCK SIZE		
	BRASS	STRAP, CONNECTING	
	MATERIAL	50 OHM	
		E. G. 24770	2.03
		DRAWN	CHECKER
	SILVER PLATED S245	Rev. 1	LB
	FINISH & SPEC. NO.	ELEC. DES. APP.	MECH. DES. APP.
			MS-2658

DIMENSIONS ARE IN INCHES UNLESS OTHERWISE SPECIFIED:		SCALE: NOT TO SCALE	
SYMBOL	DESCRIPTION	DATE	CH. NO.

REMOVE ALL BURRS AND SHARP EDGES  
WILL BE CAUSE FOR REJECTION.  
BEEN DETERMINED AND ANY DEVIATIONS  
MAXIMUM ALLOWABLE TOLERANCES HAVE

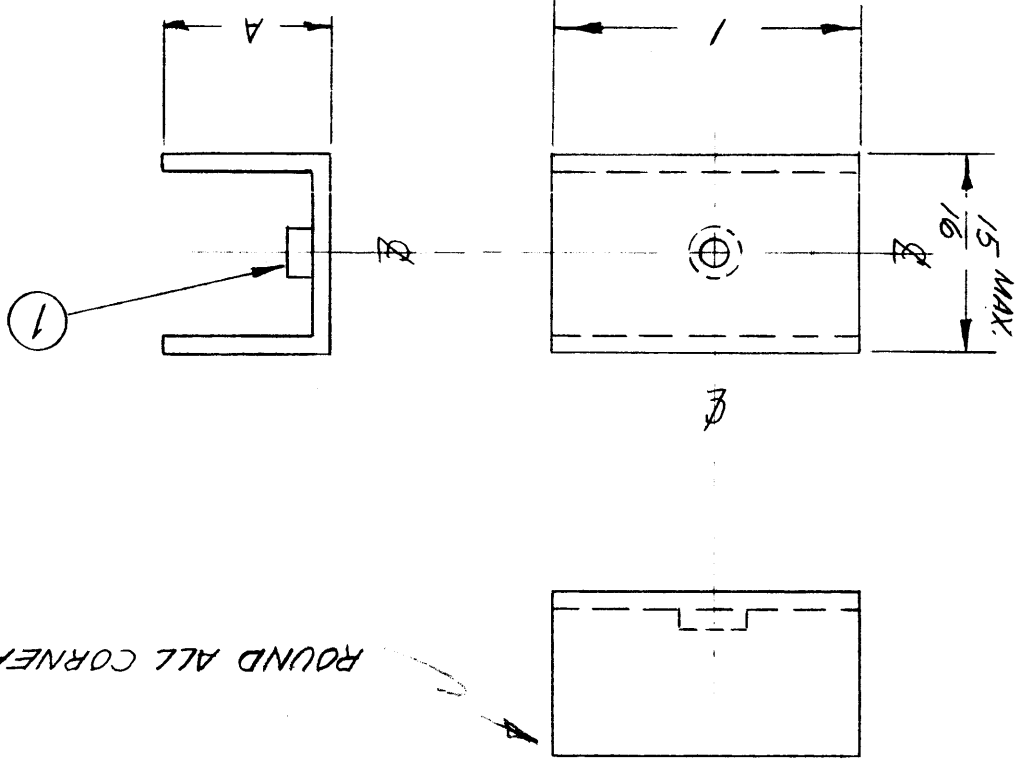
TOLERANCES ON  
NO FRACTIONS  $\pm 1/64$  DECIMALS  $\pm .005$  ANGLES  $\pm 1/20^\circ$

REQ. PER UNIT	MODEL	SECTION	ASSY. NO.	DATE
	TER-25K-50			9-21-61
USED ON				

FINISH & SPEC. NO.	ELEC. DES. APP.	MECH. DES. APP.	
5404-YEL. IRIDITE			MS-2667
TYPE & TEMPER	DRAWN	CHECKER	FINAL APPROVAL
5052-H32	WZ	Hoo	0-0
MATERIAL			
ALUMINUM			
STOCK SIZE			
.081			
REQ. ITEM	PART NO.	DESCRIPTION	SYMBOL
1	NT-129-1032-A	NUT, SWAGE TYPE	
THE TECHNICAL MATERIEL CORP. MAMARONECK, NEW YORK			
BRACKET, NUT, CAPACITOR PLATE			

Property of:  
THE TECHNICAL MATERIEL CORPORATION  
MAMARONECK, NEW YORK

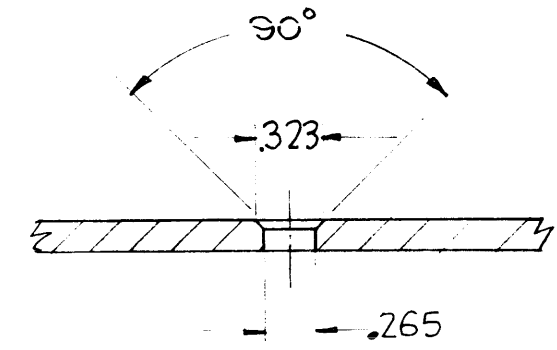
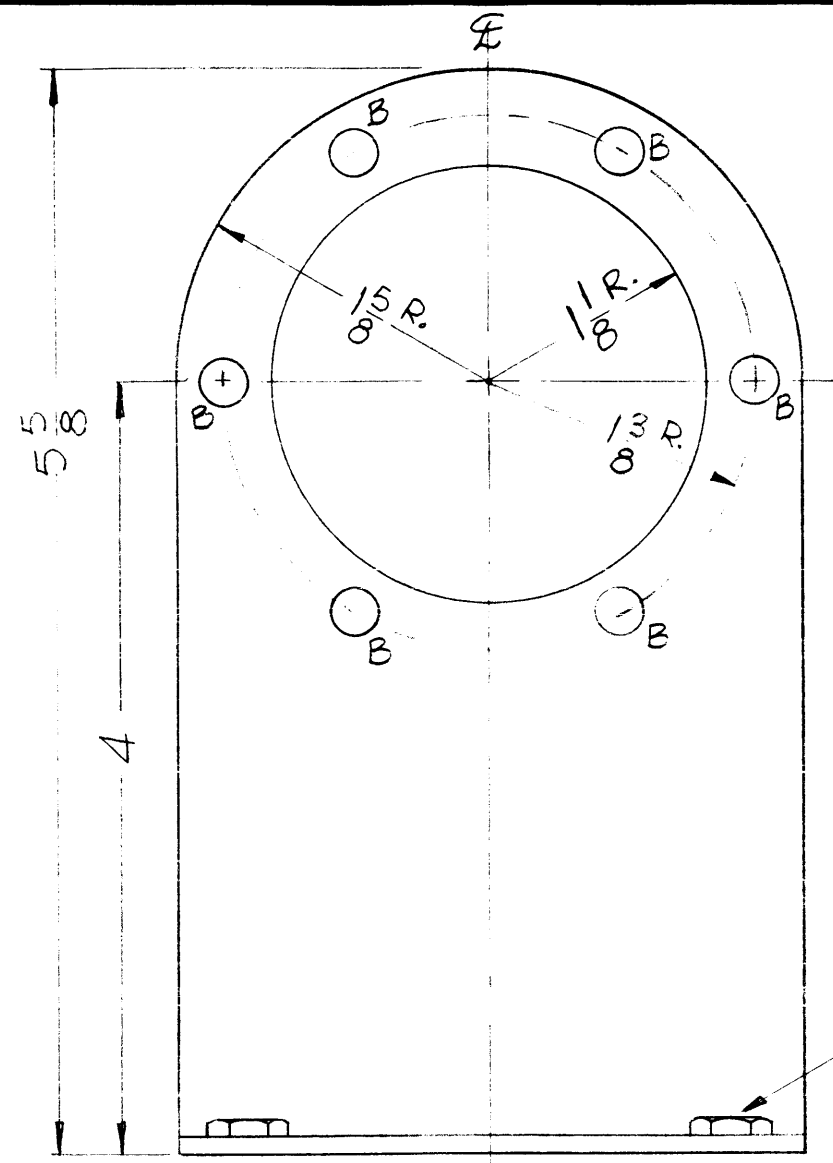
assistance and is subject to recall at any time.  
TION to the user. This drawing is loaned for mutual  
mission from THE TECHNICAL MATERIEL CORPORA-  
to manufacture anything shown hereon without per-  
mission only and may not be reproduced or used  
this drawing is issued in confidence for engineering  
information only and may not be reproduced or used  
without the written consent of THE TECHNICAL MATERIEL CORPORATION.



TMC PART NO	MS-2667-1
A	3/4

MS-2667

MS-2676



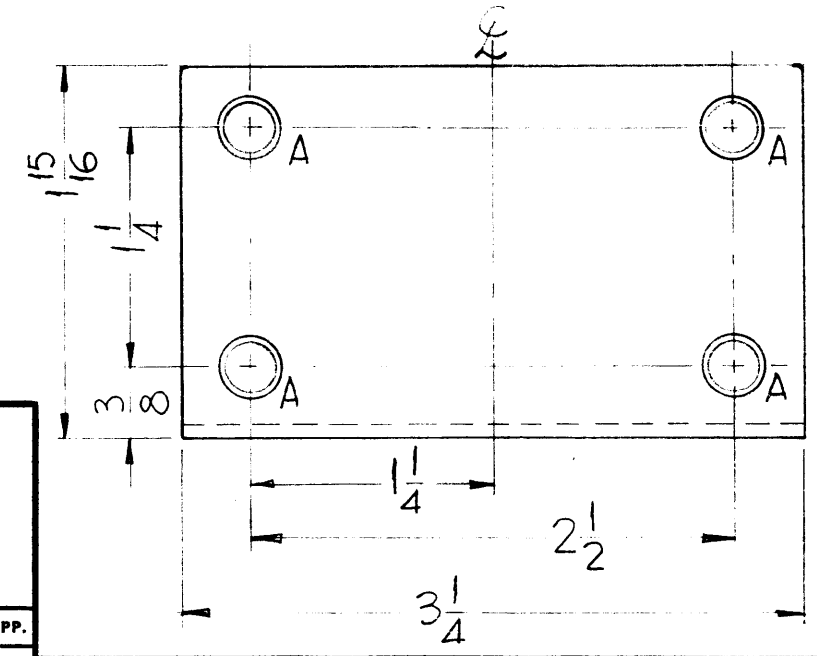
A ~ DETAIL FOR MOUNTING SM-107-54 (4 REQ.)

B ~ 1/4 DIA. HOLES EQUALLY SPACED 60° APART ON 1 3/8 R. (6 REQ.)

NOTE:  
ROUND ALL EDGES

NOTICE TO PERSONS RECEIVING THIS DRAWING  
 THE TECHNICAL MATERIEL CORPORATION claims proprietary right in the material disclosed hereon. This drawing is issued in confidence for engineering information only and may not be reproduced or used to manufacture anything shown hereon without permission from THE TECHNICAL MATERIEL CORPORATION to the user. This drawing is loaned for mutual assistance and is subject to recall at any time.

Property of:  
 THE TECHNICAL MATERIEL CORPORATION  
 MAMARONECK, NEW YORK



REF ~ (1) LD-836

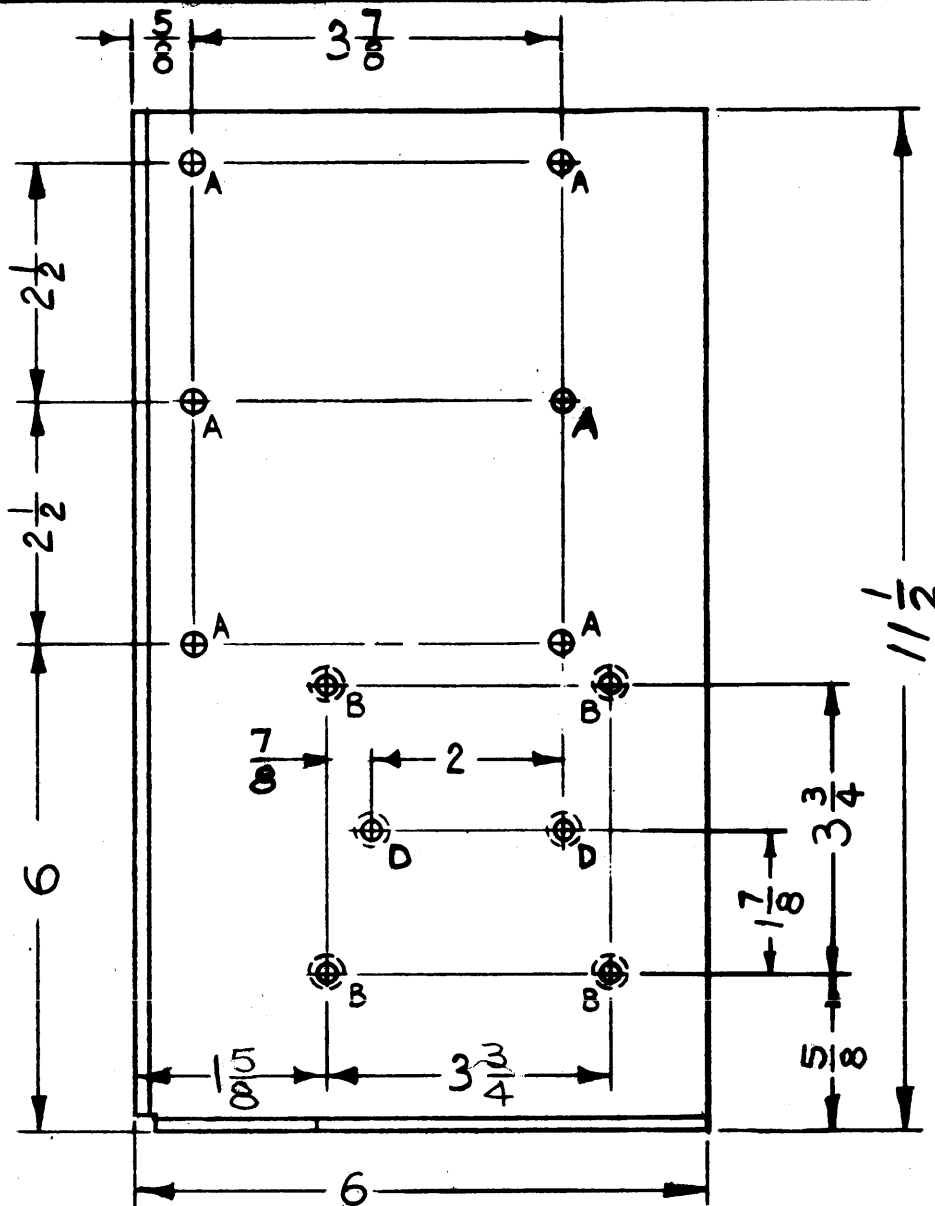
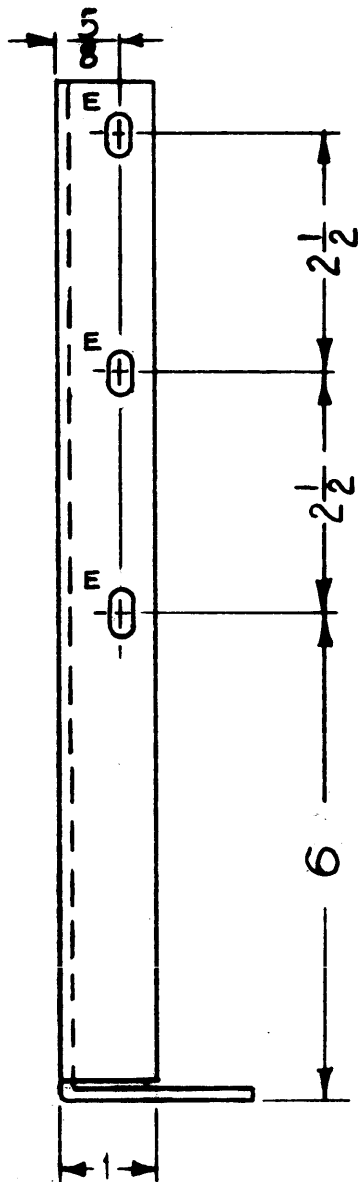
SYM	DESCRIPTION	DATE	CH. NO.	DRAFTS	CHECKER	ENG. APP.
-----	-------------	------	---------	--------	---------	-----------

UNLESS OTHERWISE SPECIFIED:  
 DIMENSIONS ARE IN INCHES  
 TOLERANCES ON FRACTIONS ± 1/64 DECIMALS ± .005 ANGLES ± 1/2°  
 SCALE:  
 MAXIMUM ALLOWABLE TOLERANCES HAVE BEEN DETERMINED AND ANY DEVIATIONS WILL BE CAUSE FOR REJECTION.  
 REMOVE ALL BURRS AND SHARP EDGES

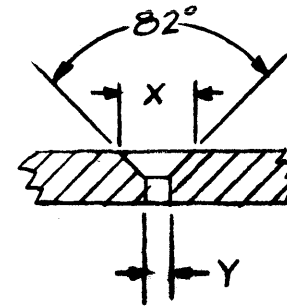
1	GPT-40K	AX-275		11-4-61
REQ. PER UNIT	MODEL	SECTION	ASS'Y. NO.	DATE
	USED ON			

4	1	SM-107-54	INSERT, HEX (10-32)	
REQ.	ITEM	PART NO.	DESCRIPTION	SYMBOL
		.081	THE TECHNICAL MATERIEL CORP. MAMARONECK, NEW YORK	
		ALUMINUM	BRACKET, BY PASS CAPACITOR	
		5052-H32		
		S-404 YEL IRIDITE		

MS-2677



- A -  $\frac{13}{64}$  DIA. 8 REQ
- B - SEE CHART 4 "
- C -  $\frac{11}{16}$  DIA. 1 "
- D - SEE CHART 2 "
- E -  $\frac{7}{32} \times \frac{7}{16}$  SLOT 3 "

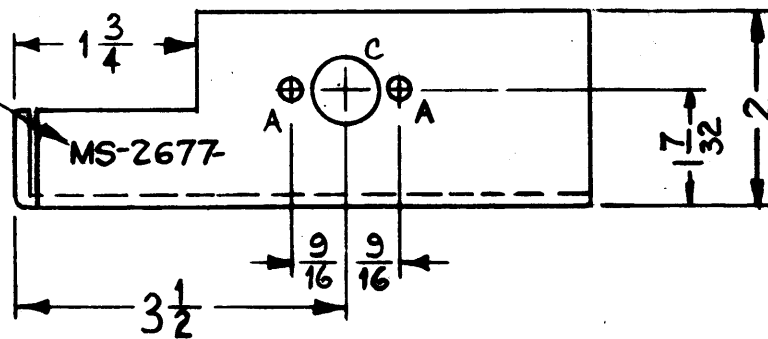


- CHART -

HOLE	SCREW	Y	X
B	10-32	.196	.390
D	8-32	.169	.337

USE MATERIAL THICKNESS FOR MAX. RADIUS ON ALL BENDS UNLESS OTHERWISE SPECIFIED.

METAL STAMP TMC  
PART NO 1/8 HIGH  
GOTHIC AS SHOWN,  
WITH LATEST  
REVISION LETTER



REF: LD-981 (2)

SYM	DESCRIPTION	DATE	CH. NO.	DRAFTS	CHECKER	ENG. APP.
B	"E" SLOTS WERE "A" HOLES	5-26-64	11428	JMB		
A	DM. 17/32 WAS 17/8	12-2-61	5990	G DL		

UNLESS OTHERWISE SPECIFIED:  
DIMENSIONS ARE IN INCHES  
TOLERANCES ON FRACTIONS  $\pm 1/64$  DECIMALS  $\pm .005$  ANGLES  $\pm 1/2$

SCALE: 2:1 DO NOT SCALE  
MAXIMUM ALLOWABLE TOLERANCES HAVE BEEN DETERMINED AND ANY DEVIATIONS WILL BE CAUSE FOR REJECTION.  
REMOVE ALL BURRS AND SHARP EDGES

REQ. PER UNIT	MODEL	SECTION	APPV. NO.	DATE
1	AT-103	GPT-406		10-26-61

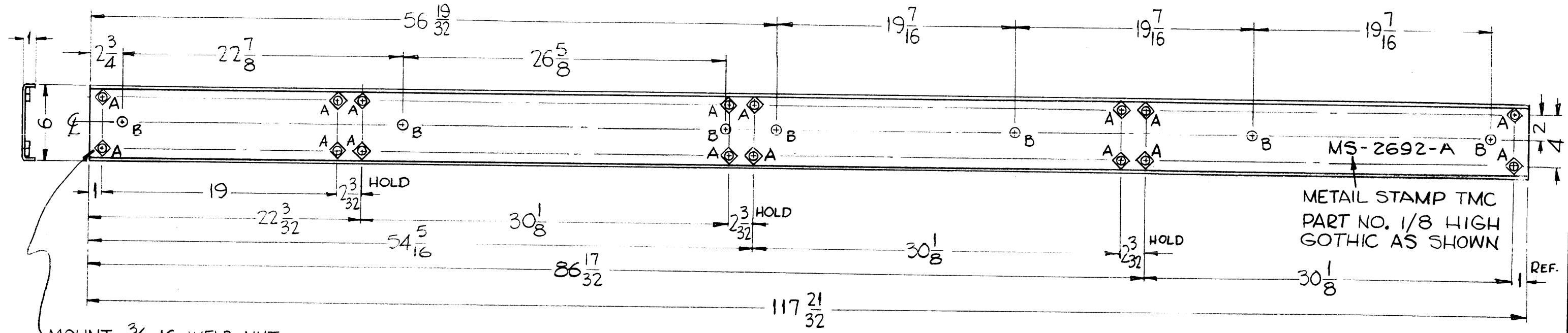
USED ON

REQ.	ITEM	PART NO.	DESCRIPTION	SYMBOL
	1/8		THE TECHNICAL MATERIEL CORP. MAMARONECK, NEW YORK	
	ALUMINUM		BRACKET, CAPACITOR	
	5052-H32		AP - RIZZIO	
	S404 YELL. IRIDITE		DRAWN / CHECKER	FINAL APPROVAL
			ELEC. DES. APP. MECH. DES. APP.	MS-2677 B

MS-2692 A

THE CONTENTS OF THIS DRAWING ARE THE EXCLUSIVE PROPERTY OF THE TECHNICAL MATERIEL CORP. ITS UNAUTHORIZED USE OR REPRODUCTION IN WHOLE OR IN PART IS STRICTLY FORBIDDEN.

HOLE	DESCRIPTION	REQ.
A	7/16 DIA.	16
B	3/4 DIA.	7



MOUNT 3/8-16 WELD NUT IN "A" HOLES AS SHOWN.

USE MATERIAL THICKNESS FOR MAX. RADIUS ON ALL BENDS UNLESS OTHERWISE SPECIFIED

MOUNT INSERTS AFTER FINISHING

PROPERTY OF THE TECHNICAL MATERIEL CORP. THIS DRAWING IS THE PROPERTY OF THE TECHNICAL MATERIEL CORP. IT IS TO BE USED FOR THE MANUFACTURE OF THE PARTS SPECIFIED HEREON ONLY. IT IS NOT TO BE REPRODUCED OR COPIED IN ANY MANNER WITHOUT THE WRITTEN PERMISSION OF THE TECHNICAL MATERIEL CORP. THIS DRAWING IS NOT TO BE USED FOR ANY OTHER PURPOSE AND IS SUBJECT TO RECALL AT ANY TIME.

Property of:  
THE TECHNICAL MATERIEL CORPORATION  
MAMARONECK, N.Y.

SYM	DESCRIPTION	DATE	CH. NO.	DRAFTS	CHECKER	ENG. APP.
A	FINISH & SPEC. ADDED	9-28-62	7349	E.S.	Y.S.	M.S.

UNLESS OTHERWISE SPECIFIED:  
DIMENSIONS ARE IN INCHES  
TOLERANCES ON FRACTIONS ± 1/64 DECIMALS ± .005 ANGLES ± 1/2°

SCALE: DO NOT SCALE  
MAXIMUM ALLOWABLE TOLERANCES HAVE BEEN DETERMINED AND ANY DEVIATIONS WILL BE CAUSE FOR REJECTION.  
REMOVE ALL BURRS AND SHARP EDGES

REQ. PER UNIT	MODEL	SECTION	ASS'Y. NO.	DATE
3	GPT-40K			1-2-62

USED ON

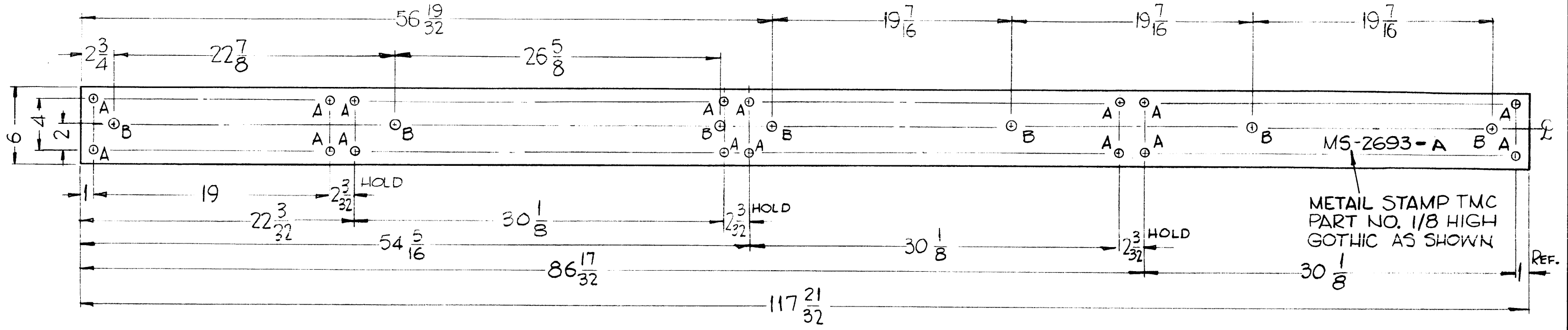
REQ.	ITEM	PART NO.	DESCRIPTION	SYMBOL
	3/16 THK.		THE TECHNICAL MATERIEL CORP. MAMARONECK, NEW YORK	
	FORMED STEEL		CHANNEL, SHOCK	
	COLD ROLLED			
	5-520 BLUE GREY TEXTURED VINYL PAINT			
			D.J. Mann	R. Luzzo
			Y.S.	M.S.
			MS-2692	A



MS-2693 A

THE CONTENTS OF THIS DRAWING ARE THE EXCLUSIVE PROPERTY OF THE TECHNICAL MATERIEL CORP. ITS UNAUTHORIZED USE OR REPRODUCTION IN WHOLE OR IN PART IS STRICTLY FORBIDDEN.

HOLE	DESCRIPTION	REQ
A	1/2 DIA.	16
B	3/4 DIA.	7



PROPERTY OF THE TECHNICAL MATERIEL CORPORATION  
MAMARONECK, NEW YORK

A	FINISH & SPEC. ADDED	9-28-62	7349	G.S.	NO	ONE
SYM	DESCRIPTION	DATE	CH. NO.	DRAFTS	CHECKER	ENG. APP.
UNLESS OTHERWISE SPECIFIED: DIMENSIONS ARE IN INCHES TOLERANCES ON FRACTIONS ± 1/64    DECIMALS ± .005    ANGLES ± 1/20		SCALE: DO NOT SCALE				
MAXIMUM ALLOWABLE TOLERANCES HAVE BEEN DETERMINED AND ANY DEVIATIONS WILL BE CAUSE FOR REJECTION. REMOVE ALL BURRS AND SHARP EDGES		3	GPT-40K			1-2-62
REQ. PER UNIT	MODEL	SECTION	ASS'Y. NO.	DATE	USED ON	

REQ. ITEM	PART NO.	DESCRIPTION	SYMBOL
1" THK.		THE TECHNICAL MATERIEL CORP. MAMARONECK, NEW YORK	
STEEL		PLATE, SHIM, CHANNEL	
COLD ROLLED			
TYPE & TEMPER	HEAT TREAT. SPEC.	DRAWN	CHECKED
S-520 BLUE GREY TEXTURED VINYL PAINT		DDM	RUZZO
FINISH & SPEC. NO.	ELEC. DES. APP.	MECH. DES. APP.	FINAL APPROVAL
			MS-2693 A