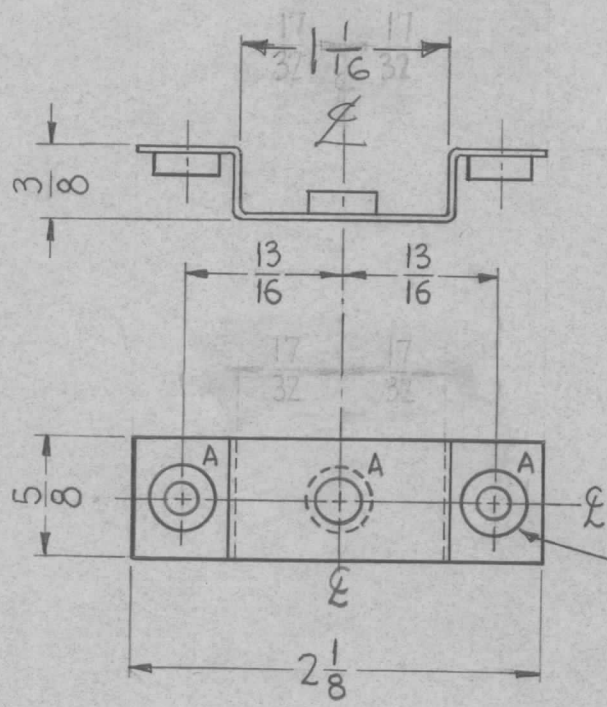


REQ. PER. UNIT	USED ON			MS-2600
	MODEL	ASS'Y. NO.	DATE	
	GPT-40K	AX-244	5-25-61	

HOLES
 A ~ $\frac{.253}{.250}$ D. For Mounting Item 1
 REQ'D. 3



1 MOUNT INSERTS AFTER FINISHING.

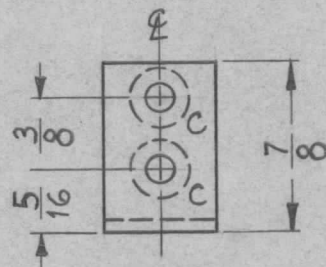
UNLESS OTHERWISE SPECIFIED DIMENSIONS ARE IN INCHES AND INCLUDE CHEMICALLY APPLIED OR PLATED FINISHES		
DECIMALS	TOLERANCES	FRACTIONS
.X ± .05		± 1/64
.XX ± .01		ANGLES
.XXX ± .005		± 0° 30'

CUT HERE
 GUARANTEED
 2-56

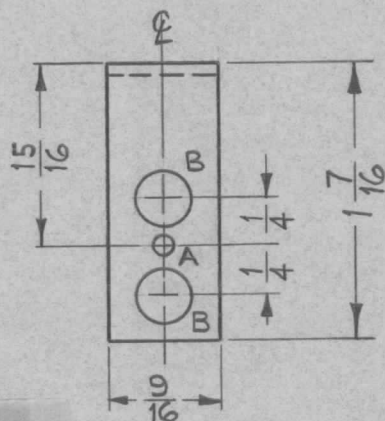
REF. MS-1990

							3	1	NT-129-1032-3	NUT, ROUND, SWAGE TYPE			
							REQ. ITEM	PART NO.		DESCRIPTION		SYMBOL	
									.081	THE TECHNICAL MATERIEL CORP.			
									STOCK SIZE	MAMARONECK, NEW YORK			
									ALUMINUM	BRACKET, RETAINER, OUTPUT STRAP			
									MATERIAL				
										D.D. Mann			
									TYPE & TEMPER	HEAT TREAT. SPEC.	DRAWN	CHECKED	FINAL APPROVAL
									S-404 IRIDITE				MS-2600
									FINISH & SPEC. NO.	ELEC. DES. APP	MECH. DES. APP		
ISSUE	ITEM	CHANGED FROM	DATE	CH. NO.	DRAFTS	CHECKER	ENG. APP.						
TOLERANCES			SCALE:										
DEC. DIM. ±			MAXIMUM ALLOWABLE TOLERANCES HAVE BEEN DETERMINED AND ANY DEVIATIONS WILL BE CAUSE FOR REJECTION. REMOVE ALL BURRS AND SHARP EDGES										
FRAC. DIM. ±													
ANGULAR DIM. ±													

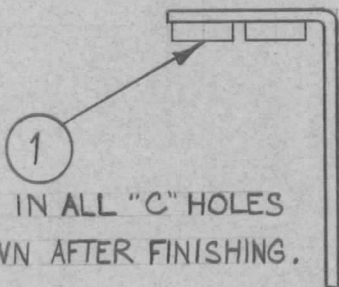
REQ. PER. UNIT	USED ON			MS-2607
	MODEL	ASS'Y. NO.	DATE	
1	CHG-2	OVEN	6-2-61	



A ~ $\frac{7}{64}$ DIA. 1 REQ.
 B ~ $\frac{9}{32}$ DIA. 2 "
 C ~ .161-.164 DIA. 2 "



MOUNT INSERTS AFTER FINISHING
 USE MATERIAL THICKNESS FOR MAX. RADIUS
 ON ALL BENDS UNLESS OTHERWISE SPECIFIED



MOUNT IN ALL "C" HOLES
 AS SHOWN AFTER FINISHING.

UNLESS OTHERWISE SPECIFIED
 DIMENSIONS ARE IN INCHES AND INCLUDE
 CHEMICALLY APPLIED OR PLATED FINISHES

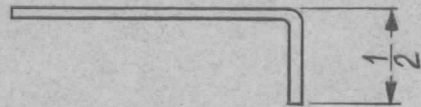
DECIMALS	FRACTIONS
.X ± .05	± 1/64
.XX ± .01	ANGLES
.XXX ± .005	± 0° 30'

TOLERANCES

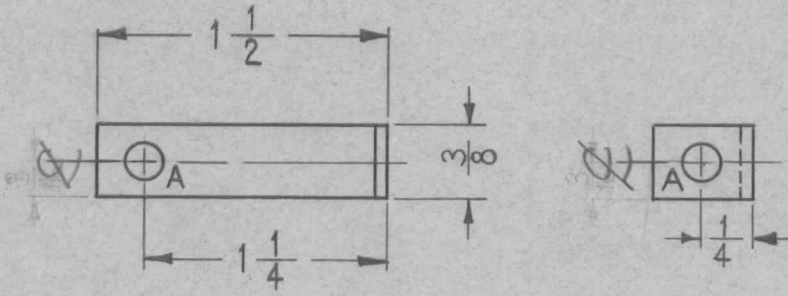
CUT HERE
 GUARANTEED
 2-66

2	1	NT-129-440-4	NUT, ROUND, SWAGE TYPE								
REQ. ITEM	PART NO.		DESCRIPTION	SYMBOL							
	.064		THE TECHNICAL MATERIEL CORP.								
	STOCK SIZE		MAMARONECK, NEW YORK								
	ALUMINUM		BRACKET, XTAL MOUNTING								
	MATERIAL										
ISSUE	ITEM	CHANGED FROM	DATE	CH. NO.	DRAFTS	CHECKER	ENG. APP.				
TOLERANCES			SCALE: FULL (DO NOT SCALE).								
DEC. DIM. ±		MAXIMUM ALLOWABLE TOLERANCES HAVE BEEN DETERMINED AND ANY DEVIATIONS WILL BE CAUSE FOR REJECTION.									
FRAC. DIM. ± 1/64		REMOVE ALL BURRS AND SHARP EDGES									
ANGULAR DIM. ±											
5052-H32		TYPE & TEMPER		HEAT TREAT. SPEC.		DRAWN		CHECKED		FINAL APPROVAL	
S404 YELL. IRIDITE		FINISH & SPEC. NO.		ELEC. DES. APP		MECH. DES. APP		MS-2607			

REQ. PER. UNIT	USED ON			MS-2608
	MODEL	ASS'Y. NO.	DATE	
1	CHG-2	SYNTH.	6-2-61	



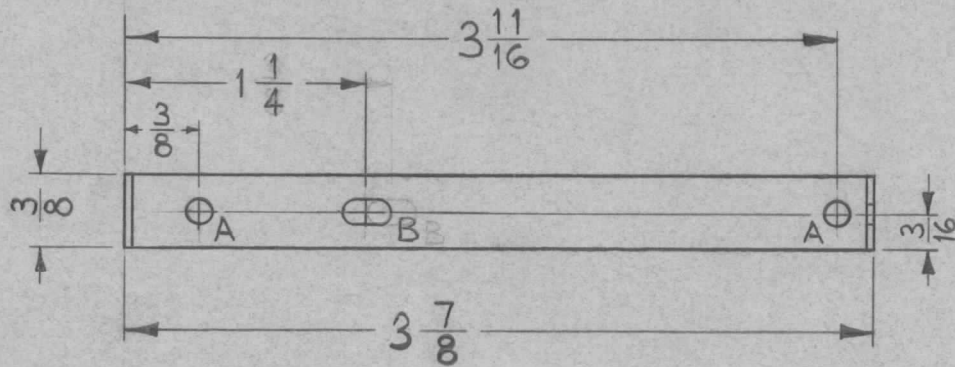
A ~ $\frac{3}{16}$ DIA. 2 REQ.



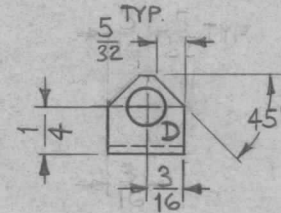
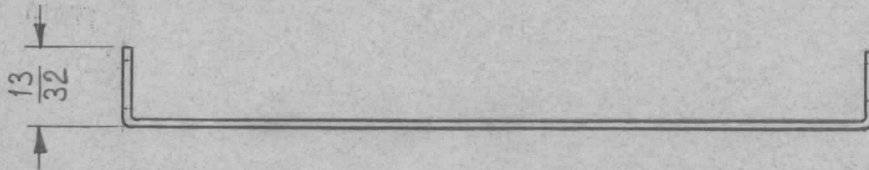
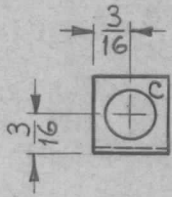
USE MATERIAL THICKNESS FOR MAX. RADIUS ON ALL BENDS UNLESS OTHERWISE SPECIFIED

ISSUE	ITEM	CHANGED FROM	DATE	CH. NO.	DRAFTS	CHECKER	ENG. APP.	REQ. ITEM	PART NO.	DESCRIPTION	SYMBOL			
								.064		THE TECHNICAL MATERIEL CORP.				
								STOCK SIZE		MAMARONECK, NEW YORK				
								ALUMINUM		BRACKET, COIL ASS'Y.				
								MATERIAL						
								5052-H32		<i>W.A.F.</i>	<i>J.W.</i>			
TOLERANCES			SCALE: FULL (DO NOT SCALE)					TYPE & TEMPER	HEAT TREAT. SPEC.	DRAWN	CHECKED	FINAL APPROVAL		
DEC. DIM. ±			MAXIMUM ALLOWABLE TOLERANCES HAVE BEEN DETERMINED AND ANY DEVIATIONS WILL BE CAUSE FOR REJECTION. REMOVE ALL BURRS AND SHARP EDGES					S404 YELL. IRIDITE		<i>S.D.</i>	<i>W.B.</i>	MS-2608		
FRAC. DIM. ± 1/64								FINISH & SPEC. NO.		ELEC. DES. APP	MECH. DES. APP			
ANGULAR DIM. ±														

REQ. PER. UNIT	USED ON			MS-2611
	MODEL	ASS'Y. NO.	DATE	
1	CHG-2	OVEN	6-6-61	



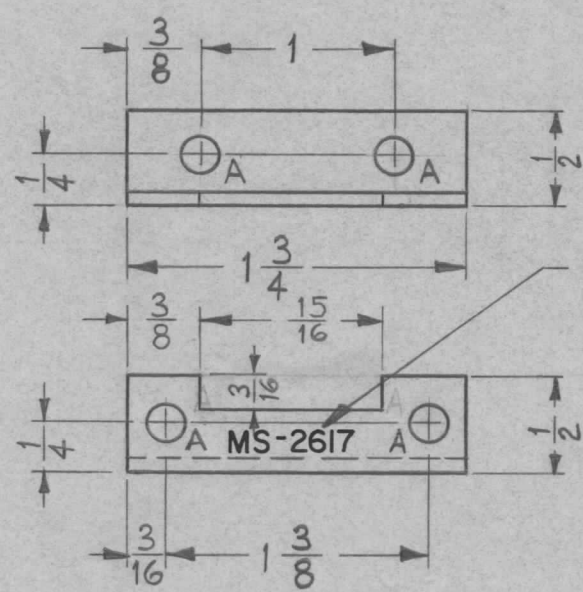
- A ~ 1/8 DIA. 2 REQ.
- B ~ 1/8 X 1/4 SLOT 1 "
- C ~ 1/4 DIA. 1 "
- D ~ 3/16 DIA. 1 "



USE MATERIAL THICKNESS FOR MAX. RADIUS ON ALL BENDS UNLESS OTHERWISE SPECIFIED

REQ.	ITEM	PART NO.	DESCRIPTION				SYMBOL
		.040	THE TECHNICAL MATERIEL CORP.				
		STOCK SIZE	MAMARONECK, NEW YORK				
		ALUMINUM	BRACKET, THERMOSTAT				
		MATERIAL					
ISSUE	ITEM	CHANGED FROM	DATE	CH. NO.	DRAFTS	CHECKER	ENG. APP.
TOLERANCES			SCALE: FULL (DO NOT SCALE)				
DEC. DIM. ±			MAXIMUM ALLOWABLE TOLERANCES HAVE BEEN DETERMINED AND ANY DEVIATIONS WILL BE CAUSE FOR REJECTION. REMOVE ALL BURRS AND SHARP EDGES				
FRAC. DIM. ± 1/64							
ANGULAR DIM. ±							
5052-H32		TYPE & TEMPER	HEAT TREAT. SPEC.	DRAWN	CHECKED	FINAL APPROVAL	
S404 YELL. IRIDITE				<i>S.D.</i>		MS-2611	
FINISH & SPEC. NO.		ELEC. DES. APP	MECH. DES. APP				

REQ. PER. UNIT	USED ON			MS-2617
	MODEL	ASS'Y. NO.	DATE	
3	GPE-1		6-8-61	



A ~ $\frac{3}{16}$ DIA. 4 REQ.

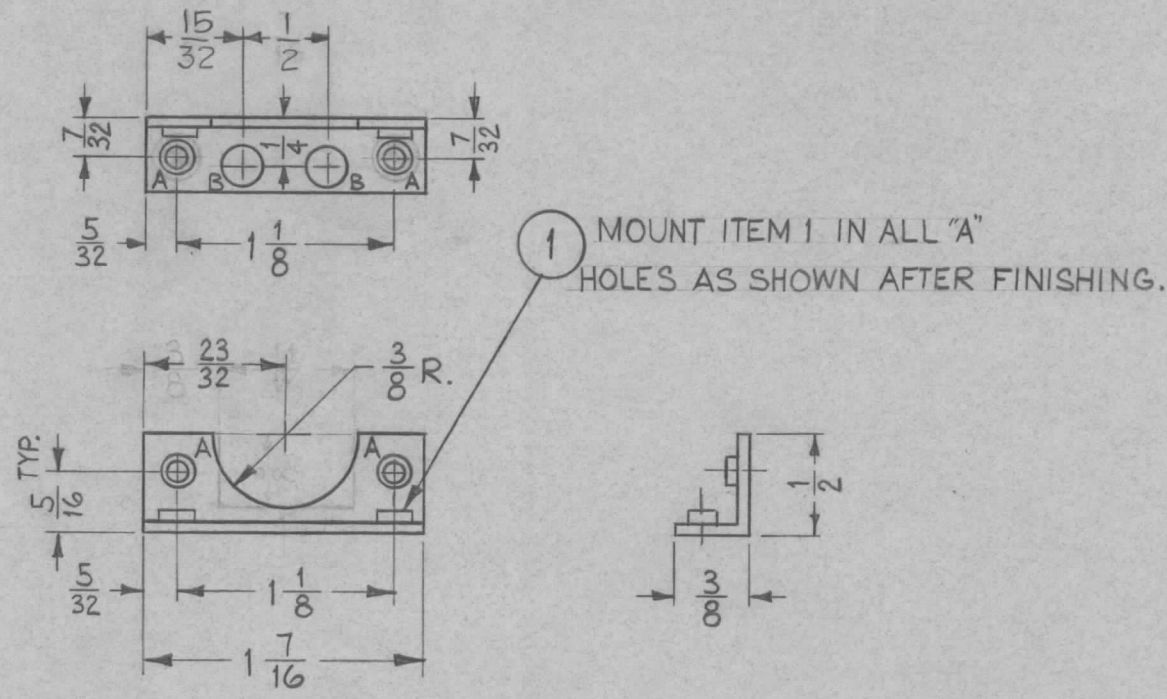
METAL STAMP TMC PART NO. AS SHOWN $\frac{1}{8}$ HIGH GOTHIC.



REQ.	ITEM	PART NO.	DESCRIPTION			SYMBOL	
		.064	THE TECHNICAL MATERIEL CORP.				
		STOCK SIZE	MAMARONECK, NEW YORK				
		ALUMINUM	BRACKET, OVEN MOUNTING				
		MATERIAL					
ISSUE	ITEM	CHANGED FROM	DATE	CH. NO.	DRAFTS	CHECKER	ENG. APP.
TOLERANCES			SCALE: FULL (DO NOT SCALE).				
DEC. DIM. ±			MAXIMUM ALLOWABLE TOLERANCES HAVE BEEN DETERMINED AND ANY DEVIATIONS WILL BE CAUSE FOR REJECTION.				
FRAC. DIM. ± 1/64			REMOVE ALL BURRS AND SHARP EDGES				
ANGULAR DIM. ±							
5052-H32			W.D.F.	file	[Signature]		
TYPE & TEMPER	HEAT TREAT. SPEC.	DRAWN	CHECKED	FINAL APPROVAL			
S404 YELL. IRIDITE		[Signature]	[Signature]	MS-2617			
FINISH & SPEC. NO.		ELEC. DES. APP.	MECH. DES. APP.				

REQ. PER UNIT	USED ON			MS-2623	B
	MODEL	ASS'Y. NO.	DATE		
6	GPE-1		6-8-61		

A~.161-.164 DIA. 4 REQ.
 B~ $\frac{13}{64}$ DIA. 2 REQ.



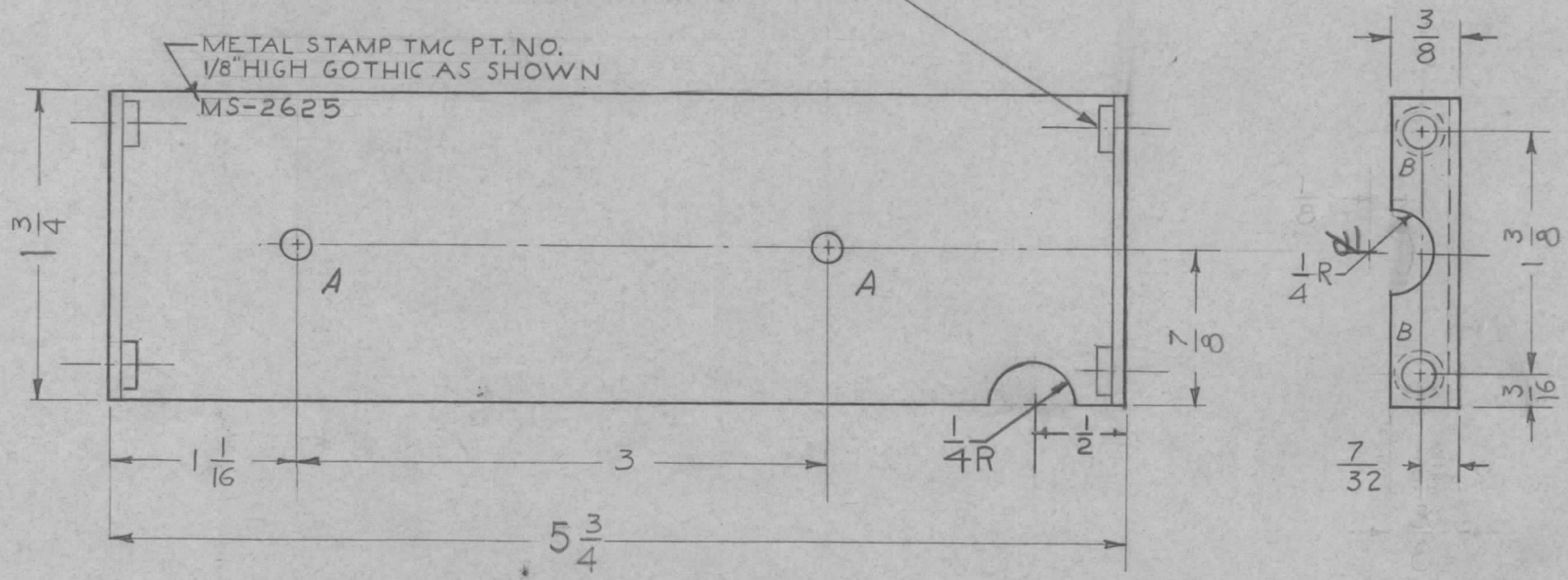
								4	1	NT-129-440-3	NUT, ROUND, SWAGE TYPE				
								REQ.	ITEM	PART NO.	DESCRIPTION	SYMBOL			
										.051	THE TECHNICAL MATERIEL CORP.				
										STOCK SIZE	MAMARONECK, NEW YORK				
B	1	IT WAS NT-129-440-4	12/15/65	15399	H.V.V.	<i>[Signature]</i>	<i>[Signature]</i>			ALUMINUM	BRACKET, TUNING CONDENSER				
A	1	$\frac{15}{32}$ DIM. WAS $\frac{1}{2}$ & $\frac{1}{2}$ DIM WAS $\frac{7}{16}$	11-9-61	5802	G.D.L.	<i>[Signature]</i>	<i>[Signature]</i>			MATERIAL					
ISSUE	ITEM	CHANGED FROM	DATE	CH. NO.	DRAFTS	CHECKER	ENG. APP.			5052-H32	<i>[Signature]</i>	<i>[Signature]</i>			
TOLERANCES			SCALE: FULL (DO NOT SCALE)							TYPE & TEMPER	HEAT TREAT. SPEC.	DRAWN	CHECKED	FINAL APPROVAL	
DEC. DIM. \pm			MAXIMUM ALLOWABLE TOLERANCES HAVE BEEN DETERMINED AND ANY DEVIATIONS WILL BE CAUSE FOR REJECTION. REMOVE ALL BURRS AND SHARP EDGES							S404 YELL. IRIDITE		<i>[Signature]</i>	<i>[Signature]</i>	MS-2623	B
FRAC. DIM. \pm 1/64														FINISH & SPEC. NO.	ELEC. DES. APP
ANGULAR DIM. \pm															

REQ. PER. UNIT	USED ON		
	MODEL	ASS'Y. NO.	DATE
1	CLL-1	A-1957	6-15-61

MS-2625 B

A ~ 11/64 DIA. 2 Req.
 B ~ .191 - .194 DIA. 4 Req.

MOUNT IN ALL "B"
 HOLES AS SHOWN
 AFTER FINISH

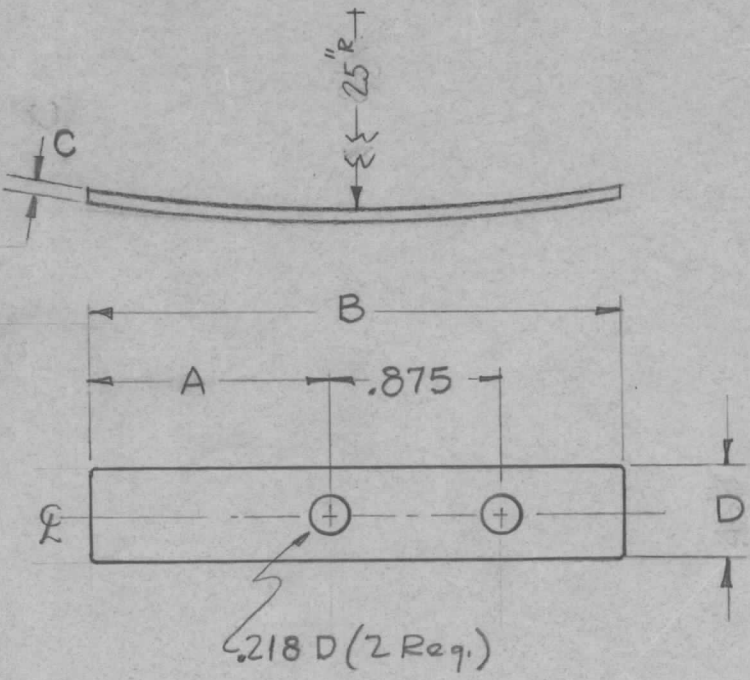


4		1	NT-129-632-4	NUT, ROUND, SWAGE TYPE			B	
REQ.	ITEM	PART NO.		DESCRIPTION			SYMBOL	
B	1	ITEM(1) WAS NT-129-440-4		3-28-63	8668	<i>[Signature]</i>	THE TECHNICAL MATERIEL CORP. MAMARONECK, NEW YORK BRACKET, BOARD MOUNTING	
A	3	A-1957 WAS A-1922						
	2	1/8 DIM. DELETED		9-12-61	5553	<i>[Signature]</i>		
	1	NOTCH ADDED						
ISSUE	ITEM	CHANGED FROM	DATE	CH. NO.	DRAFTS	CHECKER	ENG. APP.	
TOLERANCES			SCALE: DO NOT SCALE					
DEC. DIM. ±			MAXIMUM ALLOWABLE TOLERANCES HAVE BEEN DETERMINED AND ANY DEVIATIONS WILL BE CAUSE FOR REJECTION. REMOVE ALL BURRS AND SHARP EDGES					
FRAC. DIM. ± 1/64								
ANGULAR DIM. ±								
5052-H32		TYPE & TEMPER		HEAT TREAT. SPEC.		DRAWN	CHECKED	FINAL APPROVAL
S404		YELLOW		IRIDITE		<i>[Signature]</i>	<i>[Signature]</i>	<i>[Signature]</i>
FINISH & SPEC. NO.		ELEC. DES. APP.		MECH. DES. APP.		MS-2625 B		

TMC#	A	B	C	D
MS-2630-1	1.375	2.750	.040	.466
MS-2630-2	1.125	2.500	.040	.466
MS-2630-3	1.375	2.750	.040	.562
MS-2630-4	1.250	2.625	.040	.562
MS-2630-5	1.125	2.500	.040	.562
MS-2630-6	1.187	2.437	.040	.466
MS-2630-7	1.125	2.375	.040	.466

REQ. PER. UNIT	USED ON		
	MODEL	ASS'Y. NO.	DATE
32	GPT-40K	AX-267	

MS-2630 D



NOTES:
 MUST BE FLAT AFTER HEAT TREATMENT.
 MUST BE BENT AFTER DRILLING.

FINISH~
 S245 SILVER PLATE, BRIGHT.
 S423- IRIDITE, 18-P SILVER- KOTE

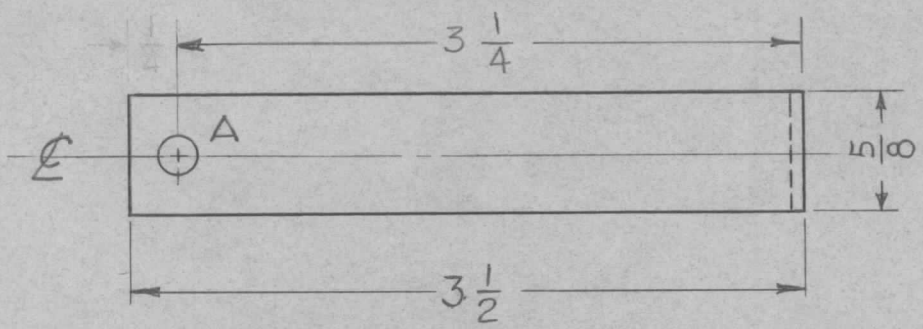
UNLESS OTHERWISE SPECIFIED
 DIMENSIONS ARE IN INCHES AND INCLUDE
 CHEMICALLY APPLIED OR PLATED FINISHES

DECIMALS	TOLERANCES	FRACTIONS
.X ± .05		± 1/64
.XX ± .01		ANGLES
.XXX ± .005		± 0° 30'

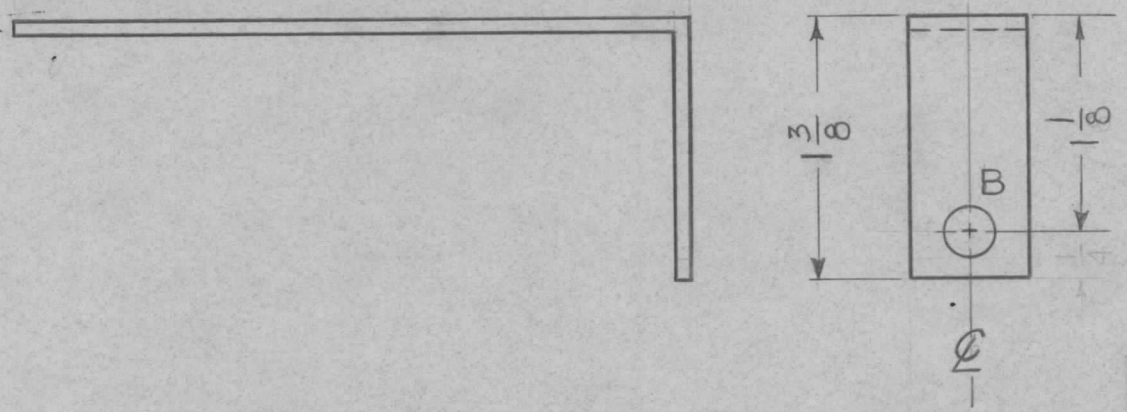
CUT HERE
 GUARANTEED
 2-66

REQ.	ITEM	PART NO.	DESCRIPTION	SYMBOL					
D	1	MS-2630-3 To 7 ADDED "D" DIM ADDED TO CHART							
C	1	RADIUS WAS 8-1/2"							
B	1	On MS-2630-2 @ Was .025							
A	2	MS-2630-2 Added @ Column Added							
ISSUE	ITEM	CHANGED FROM	DATE	CH. NO.	DRAFTS	CHECKER	ENG. APP.		
TOLERANCES		SCALE:							
DEC. DIM. ±		MAXIMUM ALLOWABLE TOLERANCES HAVE BEEN DETERMINED AND ANY DEVIATIONS WILL BE CAUSE FOR REJECTION. REMOVE ALL BURRS AND SHARP EDGES							
FRAC. DIM. ±									
ANGULAR DIM. ±									
TYPE & TEMPER		HEAT TREAT. SPEC.		DRAWN		CHECKED		FINAL APPROVAL	
FINISH & SPEC. NO.		ELEC. DES. APP		MECH. DES. APP		MS-2630 D			

REQ PER. UNIT	USED ON			MS-2631
	MODEL	ASS'Y. NO.	DATE	
1	GPT-10K	AX-138	7-6-61	



A ~ $\frac{13}{64}$ DIA. 1 Req.
 B ~ $\frac{17}{64}$ DIA. 1 Req.



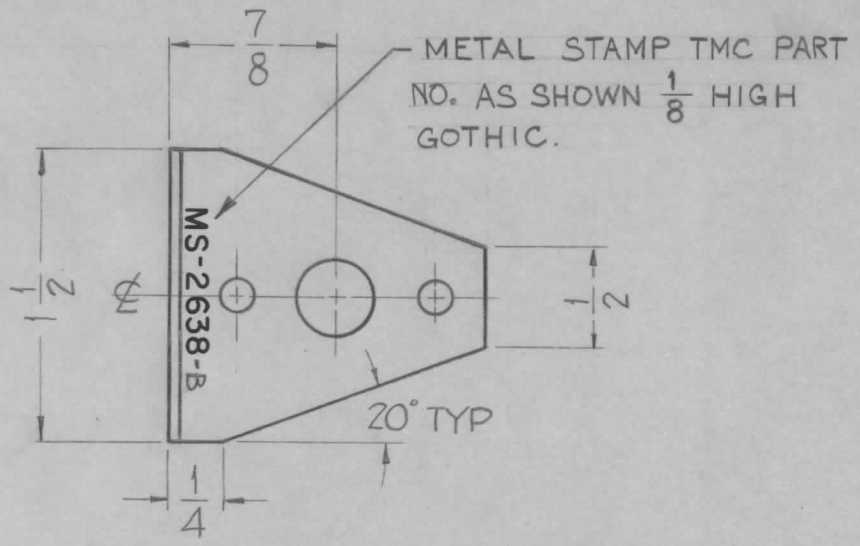
UNLESS OTHERWISE SPECIFIED
 DIMENSIONS ARE IN INCHES AND INCLUDE
 CHEMICALLY APPLIED OR PLATED FINISHES

DECIMALS	TOLERANCES	FRACTIONS
.X ± .05		± 1/64
.XX ± .01		ANGLES
.XXX ± .005		± 0° 30'

CUT HERE
 GUARANTEED
 2-66

ISSUE	ITEM	CHANGED FROM	DATE	CH. NO.	DRAFTS	CHECKER	ENG. APP.	REQ.	ITEM	PART NO.	DESCRIPTION	SYMBOL
										.064	THE TECHNICAL MATERIEL CORP. MAMARONECK, NEW YORK BRACKET, RESISTOR M T G. (FOR R817)	
										STOCK SIZE		
										ALUMINUM		
										MATERIAL		
										5052-H32	G.D.L.	<i>File</i>
										TYPE & TEMPER	CHECKED	FINAL APPROVAL MS-2631
										HEAT TREAT. SPEC.	<i>OK</i>	
										FINISH & SPEC. NO.	ELEC. DES. APP	MECH. DES. APP

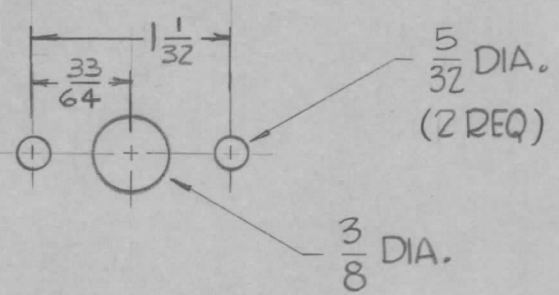
REQ. PER. UNIT	USED ON			MS-2638 B
	MODEL	ASS'Y. NO.	DATE	
1	GPE-1		8-3-61	



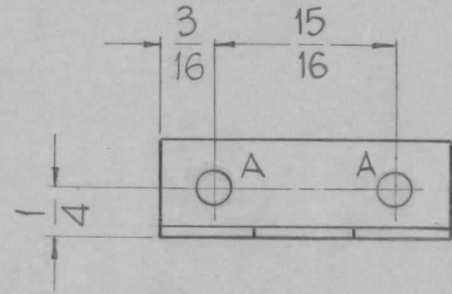
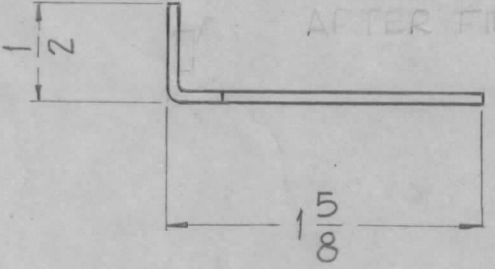
HOLES

A - 11/64 DIA. 2 REQ.

B - 1 REQ.



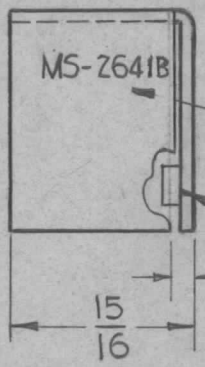
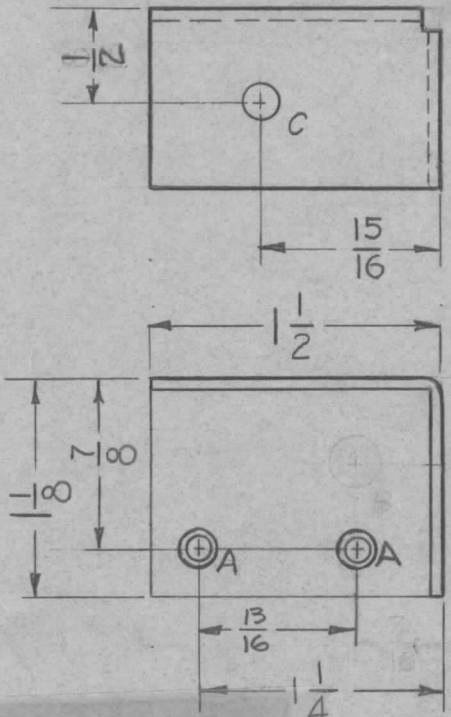
MOUNT IN ALL "A" HOLES AS SHOWN AFTER FINISH



REF - TMC DWG NO. LD-962 (1)

							# 1	NO.		DELETED									
							REQ. ITEM	PART NO.		DESCRIPTION			SYMBOL						
							.064		THE TECHNICAL MATERIEL CORP.										
							STOCK SIZE		MAMARONECK, NEW YORK										
							ALUMINUM		BRACKET, SWITCH										
							MATERIAL												
B	ITEM (1) NT-129-632-4 DELETED (2) "A" HOLES WERE .191-.194 DIA.						11-30-62	7750	MD	MD	MD								
A	ITEM (1) ADDED HOLE "A" DIA WAS 5/32						11-9-61	5802	G.D.	MD	MD								
ISSUE	ITEM	CHANGED FROM		DATE	CH. NO.	DRAFTS	CHECKER	ENG. APP.											
TOLERANCES				SCALE: - DO NOT SCALE -				5052-H32		John C. Biele	MD	MD							
DEC. DIM. ±				MAXIMUM ALLOWABLE TOLERANCES HAVE BEEN DETERMINED AND ANY DEVIATIONS WILL BE CAUSE FOR REJECTION. REMOVE ALL BURRS AND SHARP EDGES				TYPE & TEMPER		HEAT TREAT. SPEC.		DRAWN		CHECKED		FINAL APPROVAL			
FRAC. DIM. ± 1/64								S404-IRIDITE											
ANGULAR DIM. ± 1/2°								FINISH & SPEC. NO.											
									ELEC. DES. APP		MECH. DES. APP		MS-2638 B						

REQ. PER. UNIT	USED ON			MS-2641 B
	MODEL	ASS'Y. NO.	DATE	
1	GPR-92	A-2160	8-29-61	



HOLES:

- A - .161-.164 DIA 2 Req.
- C - .189 DIA. 1 Req.

METAL STAMP TMC PART AS SHOWN
1/8 HIGH GOTHIC

① MOUNT AS SHOWN IN ALL "A" HOLES AFTER FINISHING

UNLESS OTHERWISE SPECIFIED
DIMENSIONS ARE IN INCHES AND INCLUDE
CHEMICALLY APPLIED OR PLATED FINISHES

DECIMALS	FRACTIONS
.X ± .05	± 1/64
.XX ± .01	ANGLES
.XXX ± .005	± 0° 30'

TOLERANCES

CUT HERE
GUARANTEED
2-66

2	1	NT-129-440-4	NUT, ROUND, SWAGE TYPE	A
REQ. ITEM	PART NO.	GELLMAN DESCRIPTION		SYMBOL
	.064	THE TECHNICAL MATERIEL CORP.		
	STOCK SIZE	MAMARONECK, NEW YORK		
	ALUMINUM	BRACKET, COIL MTG		
	MATERIAL	GPR-92		
	5052-H32	G.D.L.	JDe	JMA
	TYPE & TEMPER	DRAWN	CHECKED	FINAL APPROVAL
	5404 YELL. IRIDITE		JMP	MS-2641 B
	FINISH & SPEC. NO.	ELEC. DES. APP	MECH. DES. APP	

ISSUE	ITEM	CHANGED FROM	DATE	CH. NO.	DRAFTS	CHECKER	ENG. APP.
B	3	"B" HOLES WERE .16 DIA	6-17-63	928A	⊙	JMS	JMS
	2	"A" HOLES WERE .113 DIA					
	1	ADDED ITEM (C)					
A	2	(1) "A" HOLE ADDED	3-5-63	8366	⊙	JMS	JMS
	1	(1) "B" HOLE .250 DIA DELETED					

TOLERANCES

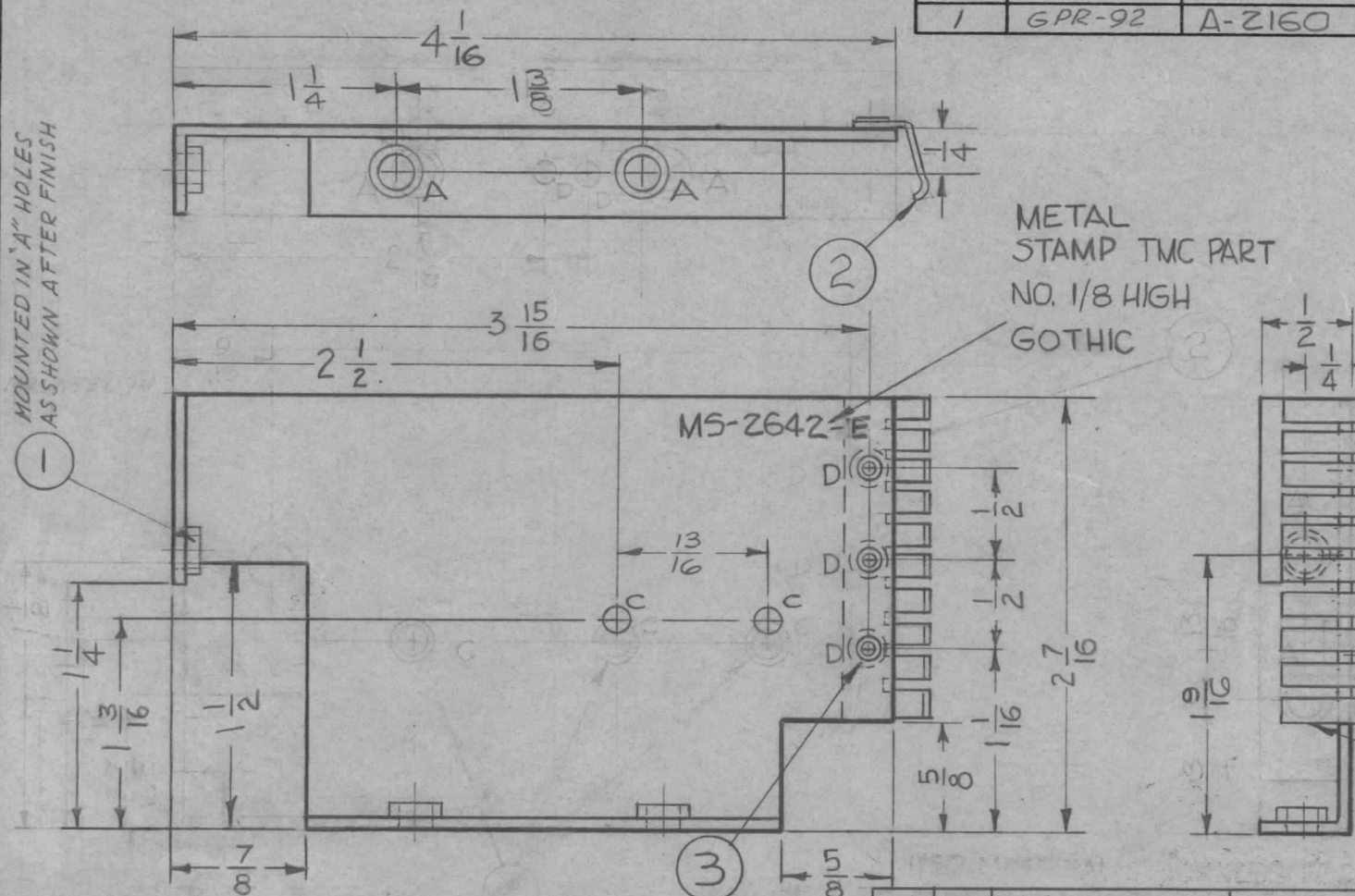
SCALE:

MAXIMUM ALLOWABLE TOLERANCES HAVE BEEN DETERMINED AND ANY DEVIATIONS WILL BE CAUSE FOR REJECTION. REMOVE ALL BURRS AND SHARP EDGES

REQ. PER. UNIT	USED ON			MS-2642 E
	MODEL	ASS'Y. NO.	DATE	
1	GPR-92	A-2160	4-6-62	

HOLES:
 A - .191-.194 DIA. 3 Req.
 C - 9/64 DIA. 2 Req.
 D - .128 DIA. 3 Req.

MOUNTED IN "A" HOLES AS SHOWN AFTER FINISH



NOTES:
 1. USE MATERIAL THICKNESS FOR MAX. RADIUS ON ALL BENDS UNLESS OTHERWISE SPECIFIED
 2. MOUNT INSERTS AFTER FINISHING
 3. MOUNT FP-190 (ITEM 2) AFTER FINISHING.

E	CUTOUT WAS 7/8 X 7/8	6-20-67	18289	L.A.K.	<i>[Signature]</i>	RH
D	7/8 DIMS. WERE 3/4	9-6-63	9905	AL	<i>[Signature]</i>	<i>[Signature]</i>
C	ITEMS (2 & 3) & NOTE ADDED	8-7-63	9728	AL	<i>[Signature]</i>	LS
	7 DELETED 2 NT-129-440-4					
	6 ON "A" HOLES, 1/4 DIM WAS 1 3/8					
	5 ON "C" HOLES, 1 3/16 DIM WAS 1 1/16					
B	4 3/4 X 3/4 CUTOUT ADDED	6-14-63	9278	<i>[Signature]</i>	<i>[Signature]</i>	<i>[Signature]</i>
	3 "A" HOLES REQ WAS 4					
	2 ITEM (1) QTY WAS 4					
	1 "C" HOLES WERE .161-.164 DIA					
A	2 (1) "C" HOLE ADDED (1) "C" RELOCATED	3-5-63	8366	<i>[Signature]</i>	<i>[Signature]</i>	<i>[Signature]</i>
	1 (1) "B" HOLE .250 D, DELETED					

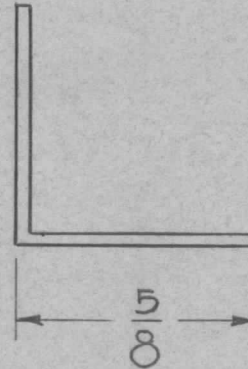
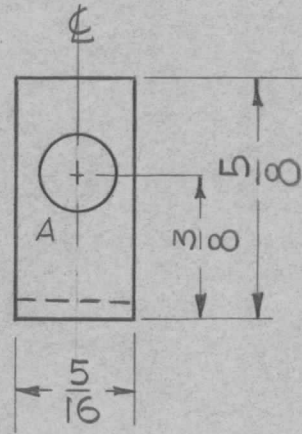
REQ.	ITEM	PART NO.	DESCRIPTION	SYMBOL
3	3	EY-100-1	EYELET, ROLLED FLANGE	
1	2	FP-190	CONTACT, GROUND	
3	1	NT-129-632-4	NUT, ROUND, SWAGE, TYPE	A

.064		THE TECHNICAL MATERIEL CORP.		
STOCK SIZE		MAMARONECK, NEW YORK		
ALUMINUM		SHIELD, IFO		
MATERIAL				

ISSUE	ITEM	CHANGED FROM	DATE	CH. NO.	DRAFTS	CHECKER	ENG. APP.
TOLERANCES			SCALE: NOT TO SCALE				
DEC. DIM. ±			MAXIMUM ALLOWABLE TOLERANCES HAVE BEEN DETERMINED AND ANY DEVIATIONS WILL BE CAUSE FOR REJECTION. REMOVE ALL BURRS AND SHARP EDGES				
FRAC. DIM. ±							
ANGULAR DIM. ±							

5052-H32	G.D.L.	<i>[Signature]</i>	<i>[Signature]</i>	FINAL APPROVAL
TYPE & TEMPER	HEAT TREAT. SPEC.	DRAWN	CHECKED	
5404 YELL. IRIDITE			<i>[Signature]</i>	MS-2642 E
FINISH & SPEC. NO.		ELEC. DES. APP.	MECH. DES. APP.	

REQ. PER UNIT	USED ON			MS-2643
	MODEL	ASS'Y. NO.	DATE	
1	GPR-92	A-2120	8-29-61	



A - .188 DIA. 1 Req.

UNLESS OTHERWISE SPECIFIED
DIMENSIONS ARE IN INCHES AND INCLUDE
CHEMICALLY APPLIED OR PLATED FINISHES

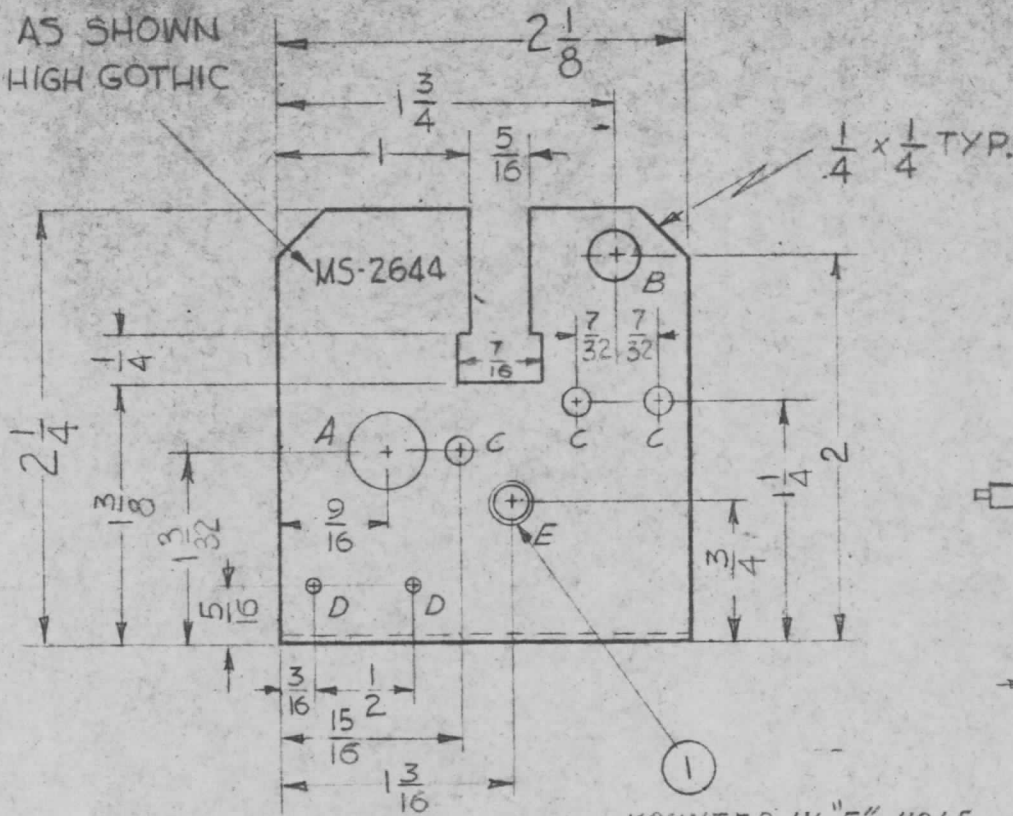
DECIMALS	TOLERANCES	FRACTIONS
.X ± .05		± 1/64
.XX ± .01		ANGLES
.XXX ± .005		± 0° 30'

CUT HERE
GUARANTEED
2-66

							REQ. ITEM	PART NO.	GELMAN	DESCRIPTION	SYMBOL				
								.032		THE TECHNICAL MATERIEL CORP.					
								STOCK SIZE		MAMARONECK, NEW YORK					
								COPPER		BRACKET, COIL MTD.					
								MATERIAL							
ISSUE	ITEM	CHANGED FROM	DATE	CH. NO.	DRAFTS	CHECKER	ENG. APP.	COMM. SOFT	G.D.L.	JR	JMA BP				
TOLERANCES			SCALE: DOUBLE SCALE				TYPE & TEMPER	HEAT TREAT. SPEC.	DRAWN	CHECKED	FINAL APPROVAL				
DEC. DIM. ±			MAXIMUM ALLOWABLE TOLERANCES HAVE BEEN DETERMINED AND ANY DEVIATIONS WILL BE CAUSE FOR REJECTION. REMOVE ALL BURRS AND SHARP EDGES								MS-2643				
FRAC. DIM. ±															
ANGULAR DIM. ±															
							FINISH & SPEC. NO.		ELEC. DES. APP	MECH. DES. APP					

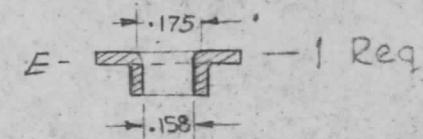
METAL
STAMP TMC PART
NO AS SHOWN
1/8 HIGH GOTHIC

REQ. PER UNIT	USED ON			MS-2644
	MODEL	ASS'Y. NO.	DATE	
1	GPR-92	A2120	8-29-61	



HOLES:

- A - 3/8 DIA. — 1 Req.
- B - 1/4 DIA. — 1 Req.
- C - 1/8 DIA. — 3 Req.
- D - 1/16 DIA. — 2 Req.



PUNCHED AND DRAWN HOLE

REVISED FEB 14 1963

USE MATERIAL THICKNESS FOR MAX. RADIUS
ON ALL BENDS UNLESS OTHERWISE SPECIFIED

MOUNTED IN "E" HOLE
AS SHOWN AFTER FINISH

MOUNT INSERTS AFTER FINISHING

UNLESS OTHERWISE SPECIFIED
DIMENSIONS ARE IN INCHES AND INCLUDE
CHEMICALLY APPLIED OR PLATED FINISHES

DECIMALS	TOLERANCES	FRACTIONS
.X ± .05		± 1/64
.XX ± .01		ANGLES
.XXX ± .005		± 0° 30'

CUT HERE
GUARANTEED
2-66

						1	1	TE-169-1	FEED-THRU, TEFLON	E		
						REQ. ITEM	PART NO.		GELLMAN	DESCRIPTION	SYMBOL	
								.032	THE TECHNICAL MATERIEL CORP.			
								STOCK SIZE	MAMARONECK, NEW YORK			
								COPPER	BRACKET, COMPONENT MTG.			
								MATERIAL				
								COMMERCIAL	GDL			
								SOFT	JMA BP			
ISSUE ITEM						CHANGED FROM		DATE	CH. NO.	DRAFTS	CHECKER	ENG. APP.
TOLERANCES						SCALE:						
DEC. DIM. ±						MAXIMUM ALLOWABLE TOLERANCES HAVE BEEN DETERMINED AND ANY DEVIATIONS WILL BE CAUSE FOR REJECTION. REMOVE ALL BURRS AND SHARP EDGES						
FRAC. DIM. ±												
ANGULAR DIM. ±												
						TYPE & TEMPER		HEATTREAT. SPEC.	DRAWN	CHECKED	FINAL APPROVAL	
						FINISH & SPEC. NO.		ELEC. DES. APP	MECH. DES. APP	MS-2644		

REQ. PER UNIT	USED ON		
	MODEL	ASS'Y. NO.	DATE
1	FFR-3S	MODEL	8-16-61

MS-2645

HOLES

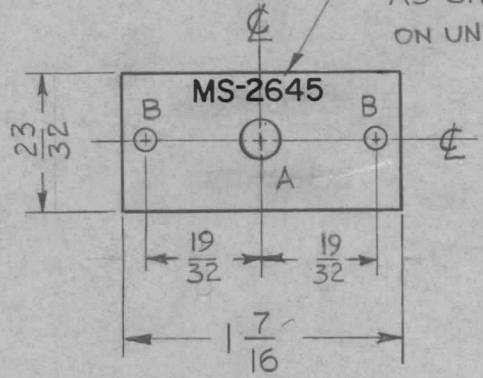
A - 3/16 DIA.

1 Req.

B - 3/32 DIA.

2 Req.

METAL STAMP TMC PART NO. AS SHOWN $\frac{1}{8}$ HIGH GOTHIC, ON UNPAINTED SIDE.



NOTE:

FINISH NOTE:

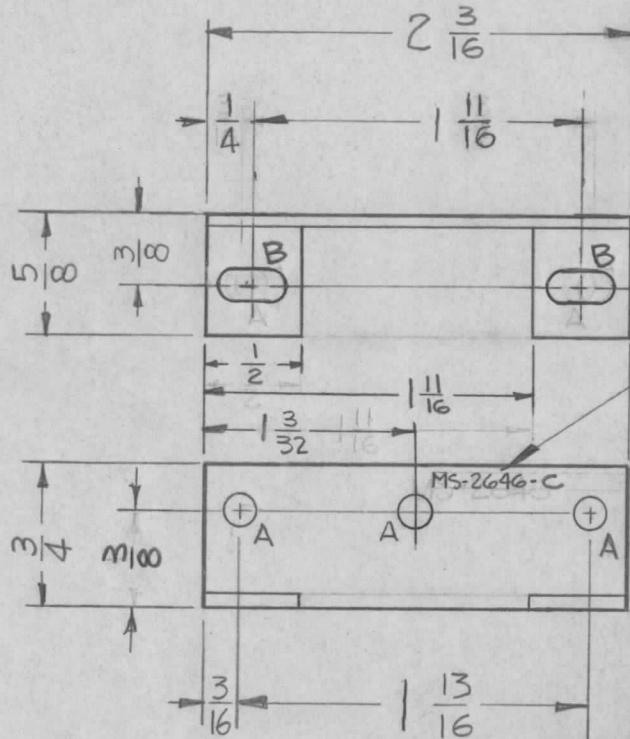
S404 YELLOW IRIDITE (PINKLE)
S114 ZINC CHROMATE PRIMER.
FINISH TO CUSTOMER SPEC.

REF: LD-964

ISSUE	ITEM	CHANGED FROM	DATE	CH. NO.	DRAFTS	CHECKER	ENG. APP.	REQ. ITEM	PART NO.	DESCRIPTION	SYMBOL
									051	THE TECHNICAL MATERIEL CORP. MAMARONECK, NEW YORK	
									ALUMINUM	SQUELCH PLATE	
									MATERIAL	FFR - FFR-3S MODIFICATION	
								5052 H32		E.D.L. <i>file</i>	<i>[Signature]</i>
								TYPE & TEMPER	HEAT TREAT. SPEC.	DRAWN	CHECKED
								SEE NOTE		<i>[Signature]</i>	
								FINISH & SPEC. NO.		ELEC. DES. APP	MECH. DES. APP
											MS-2645

REQ. PER UNIT	USED ON			MS-2646 C
	MODEL	ASS'Y. NO.	DATE	
4	GPR-92		8-29-61	

A - .140 Dia. (3 Req.)
 B - SLOT 1/64 x 11/32 (2 REQ)



METAL STAMP TMC
 PART NO. 1/8 HIGH
 GOTHIC AS SHOWN

USE MATERIAL THICKNESS FOR MAX. RADIUS
 ON ALL BENDS UNLESS OTHERWISE SPECIFIED

C	-	2 "A" HOLES DELETED 2 "B" SLOTS ADDED	9-10-63	9906	JAZ	JLE	
	-	"SUPERSEDED" DELETED 3/8 DIM WAS .500					
B	1	REPLACED BY MS-3393 & MS-3394	6-17-63	9300	JAZ	JLE	
A	1	(1) "A" HOLE ADDED	2-9-63	8218	JAZ	JLE	
ISSUE	ITEM	CHANGED FROM	DATE	CH. NO.	DRAFTS	CHECKER	ENG. APP.
TOLERANCES			SCALE: Do Not Scale				
DEC. DIM. ± .005 FRAC. DIM. ± 1/64 ANGULAR DIM. ±			MAXIMUM ALLOWABLE TOLERANCES HAVE BEEN DETERMINED AND ANY DEVIATIONS WILL BE CAUSE FOR REJECTION. REMOVE ALL BURRS AND SHARP EDGES				

REQ.	ITEM	PART NO.	STRUMER	DESCRIPTION	SYMBOL
		.064		THE TECHNICAL MATERIEL CORP.	
		STOCK SIZE		MAMARONECK, NEW YORK	
		ALUMINUM		BRACKET, CAPACITOR MOUNTING	
		MATERIAL			
		5052-H32	RUZZO	JLE	JLE BP
		TYPE & TEMPER	DRAWN	CHECKED	FINAL APPROVAL
		5404 YELL IRIDITE	JMA	JLE	MS-2646 C
		FINISH & SPEC. NO.	ELEC. DES. APP	MECH/DES. APP	

THE CONTENTS OF THIS DRAWING ARE THE EXCLUSIVE PROPERTY OF THE TECHNICAL MATERIEL CORP. ITS UNAUTHORIZED USE OR REPRODUCTION IN WHOLE OR IN PART IS STRICTLY FORBIDDEN.

REQ. PER UNIT

USED ON

MODEL

ASS'Y. NO.

DATE

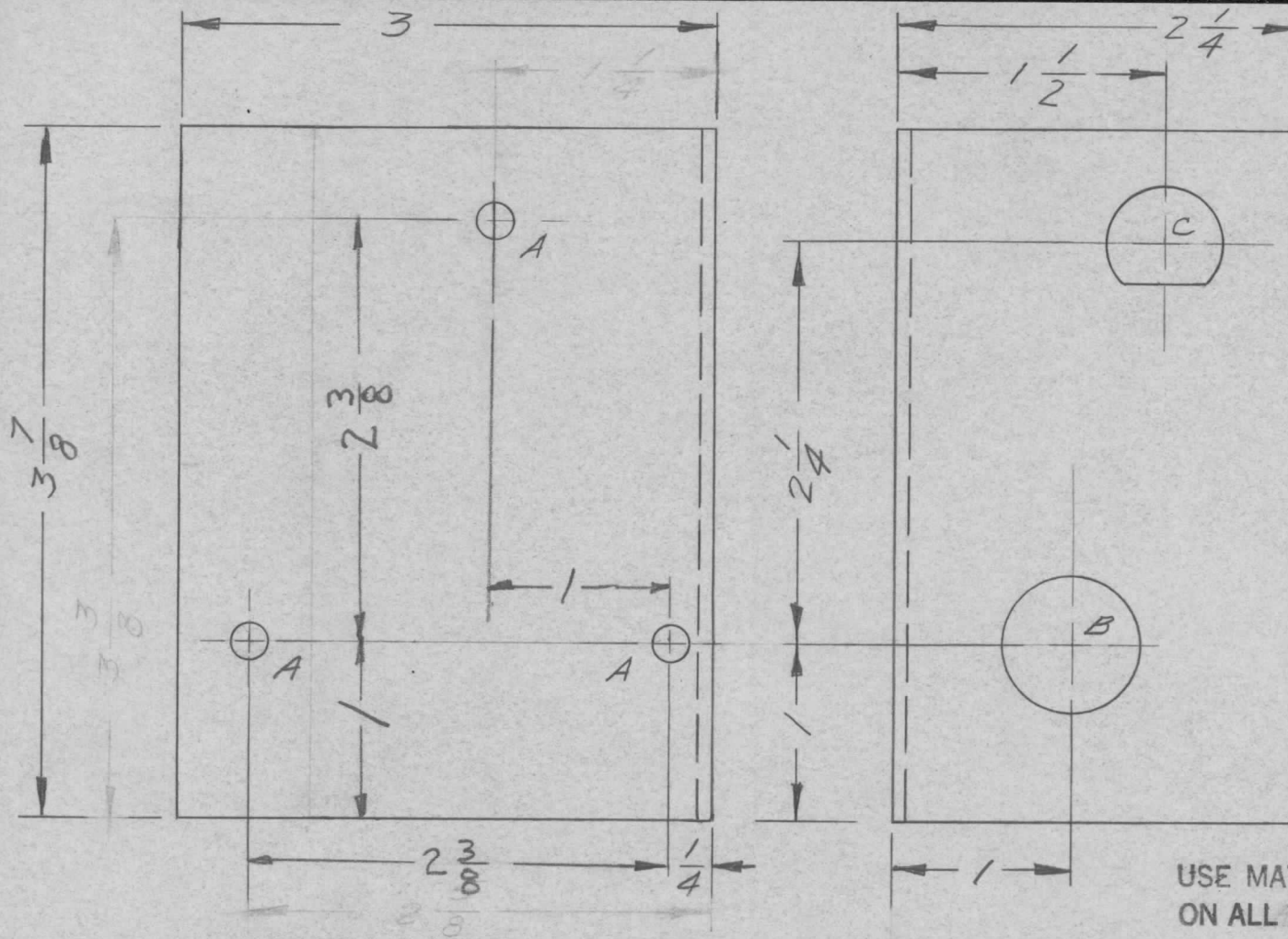
1

GPT-40K

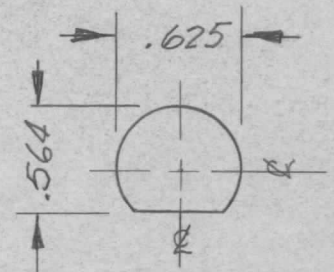
AP-103

11-13-61

MS-2647



HOLE:
 A - 3/16 DIA. 3 REQ.
 B - 3/4 DIA. 1 REQ.



UNLESS OTHERWISE SPECIFIED DIMENSIONS ARE IN INCHES AND INCLUDE CHEMICALLY APPLIED OR PLATED FINISHES	
DECIMALS	FRACTIONS
.X ± .05	± 1/64
.XX ± .01	ANGLES ± 0° 30'
.XXX ± .005	
TOLERANCES	

USE MATERIAL THICKNESS FOR MAX. RADIUS ON ALL BENDS UNLESS OTHERWISE SPECIFIED

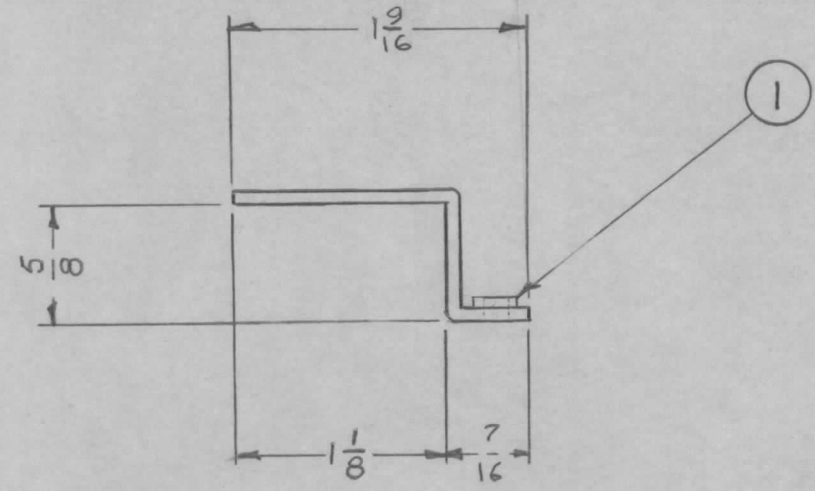
SYM	DESCRIPTION	DATE	CH. NO.	DRAFTS	CHECKER	ENG. APP.	REQ. ITEM	PART NO.	DESCRIPTION	SYMBOL	
								.081	THE TECHNICAL MATERIEL CORP. MAMARONECK, NEW YORK	BRACKET, FUSE & CAPACITOR MTG., TOP FAN	
								STOCK SIZE			
								ALUMINUM			
								MATERIAL			
							5052-H32		wh	file	02B
							5404 YEL. IRIDITE		LB		
								FINISH & SPEC. NO.	ELEC. DES. APP.	MECH. DES. APP.	MS-2647

UNLESS OTHERWISE SPECIFIED:
 DIMENSIONS ARE IN INCHES
 TOLERANCES ON
 FRAC. ± 1/64 DEC. ± .005 ANGLES ± 1/2°

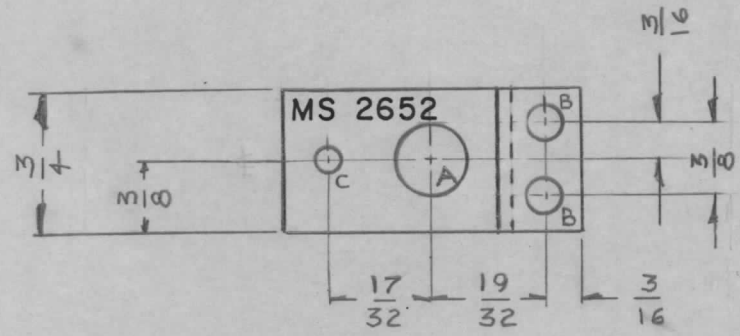
SCALE:
 MAXIMUM ALLOWABLE TOLERANCES HAVE BEEN DETERMINED AND ANY DEVIATIONS WILL BE CAUSE FOR REJECTION.
 REMOVE ALL BURRS AND SHARP EDGES

REQ. PER. UNIT	USED ON			MS-2652 A
	MODEL	ASS'Y. NO.	DATE	

FFR-3 TO FFR-35 MOD.



- A - $\frac{3}{8}$ DIA.
- B - $\frac{.191}{.194}$ DIA.
- C - $\frac{9}{64}$ DIA.



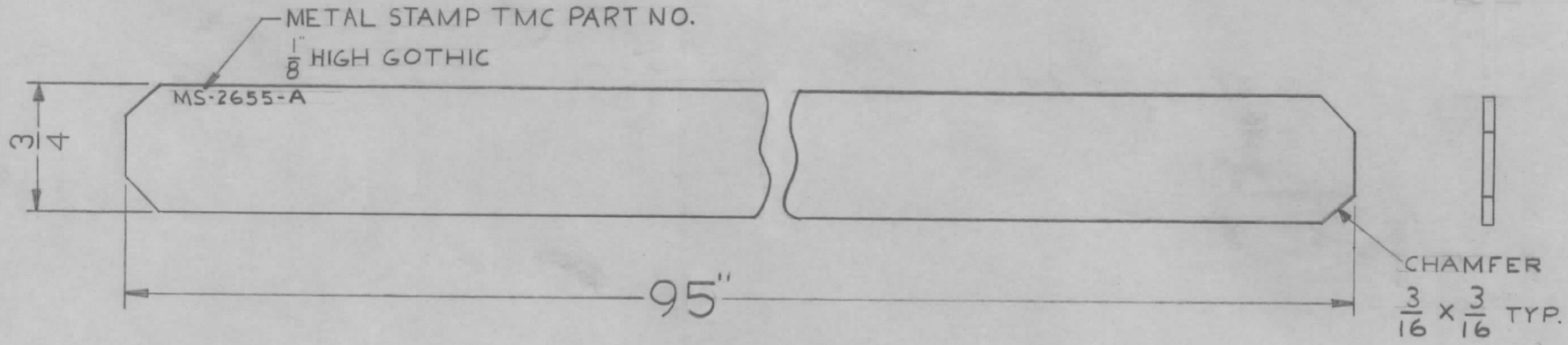
UNLESS OTHERWISE SPECIFIED
DIMENSIONS ARE IN INCHES AND INCLUDE
CHEMICALLY APPLIED OR PLATED FINISHES

DECIMALS	TOLERANCES	FRACTIONS
.X ± .05		± 1/64
.XX ± .01		ANGLES
.XXX ± .005		± 0° 30'

CUT HERE
GUARANTEED
2-66

2		1		NT-129-632-4		NUT, SWAGE		
REQ.	ITEM	PART NO.				DESCRIPTION		SYMBOL
		.064				THE TECHNICAL MATERIEL CORP.		
		STOCK SIZE				MAMARONECK, NEW YORK		
A	1	DOTTED LINE REVERSED TO CORRECT PICTORIAL		7-9-63	9531	BRACKET, POTENTIOMETER MOUNTING		
ISSUE	ITEM	CHANGED FROM	DATE	CH. NO.	DRAFTS	CHECKER	ENG. APP.	
TOLERANCES			SCALE: FULL					
DEC. DIM. ±			MAXIMUM ALLOWABLE TOLERANCES HAVE BEEN DETERMINED AND ANY DEVIATIONS WILL BE CAUSE FOR REJECTION.					
FRAC. DIM. ±			REMOVE ALL BURRS AND SHARP EDGES					
ANGULAR DIM. ±			TYPE & TEMPER		HEATTREAT. SPEC.		DRAWN	
			YELLOW IRIDITE				CHECKED	
			FINISH & SPEC. NO.		ELEC. DES. APP.		MECH. DES. APP.	
							MS-2652 A	

REQ. PER. UNIT	USED ON			MS-2655	A
	MODEL	ASS'Y. NO.	DATE		
2	TRC-20K		9-26-61		



IMPORTANT = ROUND ALL EDGES.

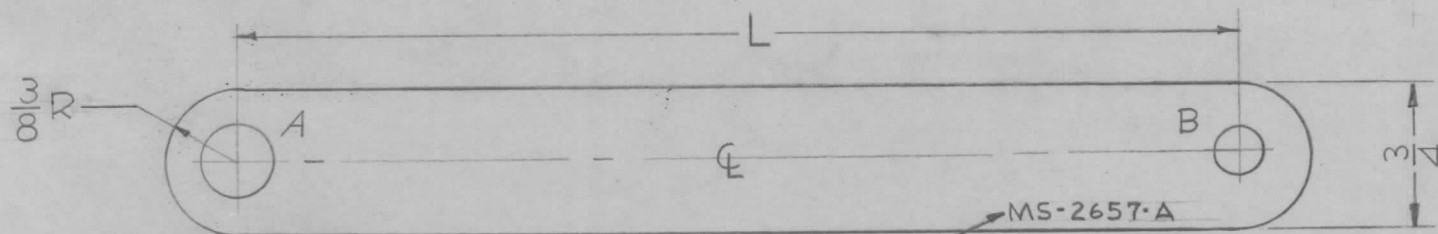
Handwritten signature or initials

							REQ. ITEM	PART NO.	DESCRIPTION			SYMBOL						
							.032		THE TECHNICAL MATERIEL CORP.									
							STOCK SIZE		MAMARONECK, NEW YORK									
A	1	95" Dim. Was 90"	12-6-61	5998	L.L.	<i>[Signature]</i>	SOFT COPPER	STRAP, WINDING, 600 OHM										
ISSUE	ITEM	CHANGED FROM	DATE	CH. NO.	DRAFTS	CHECKER	ENG. APP.	MATERIAL										
TOLERANCES			SCALE:						L.L.	R4770	<i>[Signature]</i>							
DEC. DIM. ±			MAXIMUM ALLOWABLE TOLERANCES HAVE BEEN DETERMINED AND ANY DEVIATIONS WILL BE CAUSE FOR REJECTION. REMOVE ALL BURRS AND SHARP EDGES				TYPE & TEMPER		HEATTREAT. SPEC.		DRAWN		CHECKED		FINAL APPROVAL			
FRAC. DIM. ± 1/64							SILVER PLATED		5245		<i>[Signature]</i>		<i>[Signature]</i>		MS-2655		A	
ANGULAR DIM. ±							FINISH & SPEC. NO.		ELEC. DES. APP		MECH. DES. APP							

TMC PART NO.	"L" (HOLE CENTERS)	"A" HOLE DIA.	"B" HOLE DIA.
MS-2657-1	3-5/8	3/8	1/4
MS-2657-2	4-13/16	3/8	1/4
MS-2657-3	9-7/8	5/16	5/16

REQ. PER. UNIT	USED ON		
	MODEL	ASS'Y. NO.	DATE
	TRC-20K		9-26-61

MS-2657 A



METAL STAMP TMC PART NO.
1/8" HIGH GOTHIC

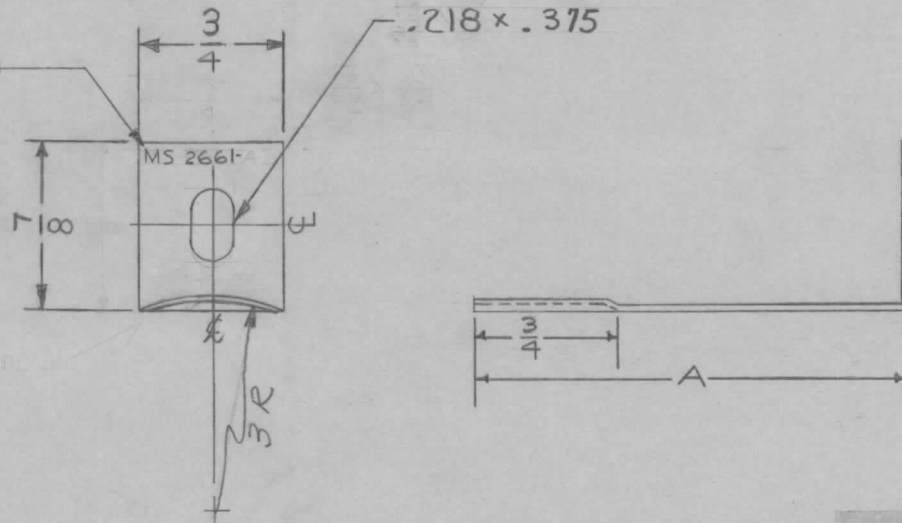
							REQ. ITEM	PART NO.	DESCRIPTION	SYMBOL	
							.032		THE TECHNICAL MATERIEL CORP.		
							STOCK SIZE		MAMARONECK, NEW YORK		
							COPPER		STRAP, CONNECTING,		
							MATERIAL		600 OHM OUTPUT		
									GG	QB	
							TYPE & TEMPER	HEAT TREAT. SPEC.	DRAWN	CHECKED	FINAL APPROVAL
							SILVER PLATE S245		RdW	LB	MS-2657
							FINISH & SPEC. NO.		ELEC. DES. APP	MECH. DES. APP	A
TOLERANCES DEC. DIM. ± FRAC. DIM. ± 1/64 ANGULAR DIM. ±							SCALE: MAXIMUM ALLOWABLE TOLERANCES HAVE BEEN DETERMINED AND ANY DEVIATIONS WILL BE CAUSE FOR REJECTION. REMOVE ALL BURRS AND SHARP EDGES				
ISSUE ITEM CHANGED FROM A 3 [A] [B] Hole Columns Added To Chart 2 3/4 Dim. Added 1 MS-2657-3 Added							DATE	CH. NO.	DRAFTS	CHECKER	ENG. APP.
							12-22-61	6088	L.A.	[Signature]	[Signature]

TMC PT. NO.	"A"	USED ON	REQ
MS-2661-1	1 $\frac{1}{4}$	TER-25K/50	24
MS-2661-2	2 $\frac{1}{4}$	TER-25K/50	24
MS-2661-3	1 $\frac{5}{8}$	TER-25K/50	24

REQ. PER. UNIT	USED ON		
	MODEL	ASS'Y. NO.	DATE
			9-16-61

MS-2661 B

METAL STAMP TMC PART NO. $\frac{1}{8}$ " HIGH GOTHIC, W/LATEST REV. LETTER.



UNLESS OTHERWISE SPECIFIED DIMENSIONS ARE IN INCHES AND INCLUDE CHEMICALLY APPLIED OR PLATED FINISHES		
DECIMALS	TOLERANCES	FRACTIONS
.X ± .05		± 1/64
.XX ± .01		ANGLES ± 0° 30'
.XXX ± .005		

CUT HERE GUARANTEED 2-66

REQ.	ITEM	PART NO.	DESCRIPTION	SYMBOL			
		.040 THK.	THE TECHNICAL MATERIEL CORP. MAMARONECK, NEW YORK	STRAP, RESISTOR, CONTACT			
		STOCK SIZE					
		COPPER					
		MATERIAL					
		HALF-HARD	LL	ab			
		TYPE & TEMPER	HEAT TREAT. SPEC.	DRAWN	CHECKED	FINAL APPROVAL	
		S-245 .0003 SILVER PLATE		aa	RR	MS 2661	B
		FINISH & SPEC. NO.	ELEC. DES. APP	MECH. DES. APP			

B ADDED MS2661-3 12-7-66 17393 RME [Signature]
 A 1 SLOT WAS $\frac{13}{32} \times \frac{13}{64}$ 8-14-62 7063 G.S. [Signature]
 TOLERANCES SCALE:
 DEC. DIM. ± MAXIMUM ALLOWABLE TOLERANCES HAVE BEEN DETERMINED AND ANY DEVIATIONS WILL BE CAUSE FOR REJECTION.
 FRAC. DIM. ± REMOVE ALL BURRS AND SHARP EDGES
 ANGULAR DIM. ±

APPLICATION

QTY MODEL USED ON ASS'Y NO. LTR

4 TER-25K

B

REVISIONS

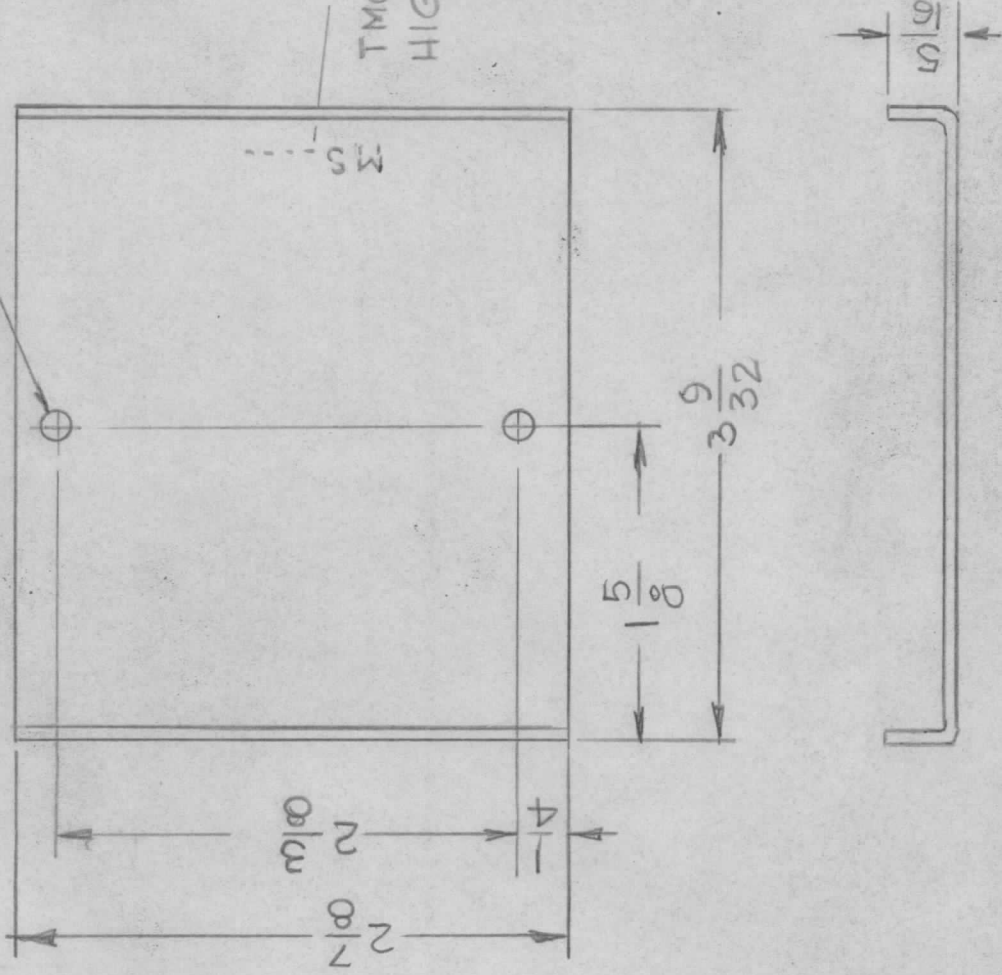
DATE E.M.N.NO DRAFT CHKD APPD

4-10-71

G.D.L.

DESCRIPTION
REDRAWN & UPDATED WAS 1/8" THK ALUM.

13/64 DIA. 2 REQ'D



UNLESS OTHERWISE SPECIFIED DIMENSIONS ARE IN INCHES AND INCLUDE CHEMICALLY APPLIED OR PLATED FINISHES

DECIMALS FRACTIONS
.X ± .05 TOLS. 1/64
.XX ± .01 ANGLES 9°-30'
.XXX ± .005

MATERIAL .064 THK
ALY 5052-H32

FINISH S404

YEL. IRIDITE

REQ'D ITEM PART NUMBER

FINAL APPROVAL DATE
MECH. DES. DATE
ELECT. DES. DATE
CHECKED DATE
DRAWN G.D.L. DATE 4-10-71

DESCRIPTION

LIST OF MATERIAL

THE TECHNICAL MATERIEL CORP.
MAMARONECK, NEW YORK

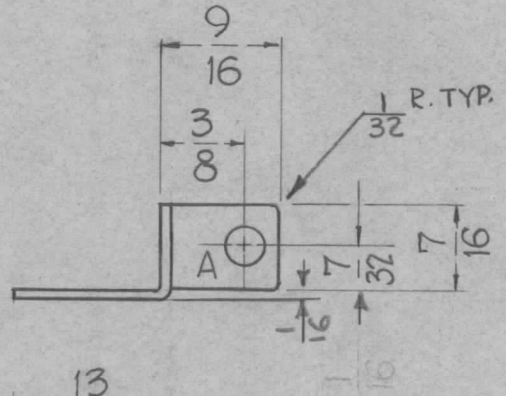
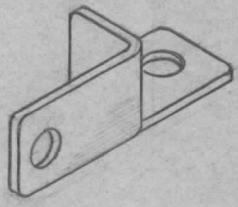
BRACKET CAPACITOR MTG

SYM.

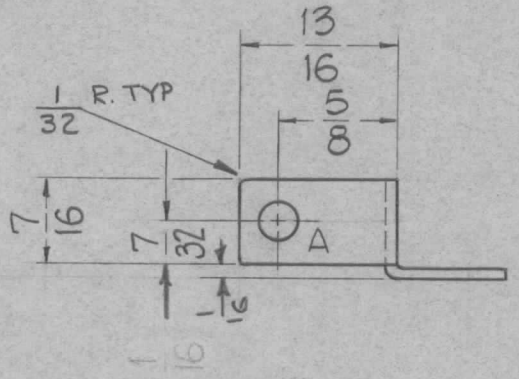
NOTICE TO PERSONS RECEIVING THIS DRAWING
THE TECHNICAL MATERIEL CORPORATION claims proprietary right in the material disclosed hereon. This drawing is issued in confidence for engineering information only and may not be reproduced or used to manufacture anything shown hereon without permission from THE TECHNICAL MATERIEL CORPORATION to the user. This drawing is loaned for mutual assistance and is subject to recall at any time.

SIZE CODE IDENT. NO. DWG NO. ISSUE
A 82679 MS2662 B
SCALE 1:1 SHEET OF

REQ. PER. UNIT	USED ON			MS-2666	B
	MODEL	ASS'Y. NO.	DATE		
1	GPT-40K	A-3023	9-77-61		



Holes
A - 13/64 DIA. — 2REQ.

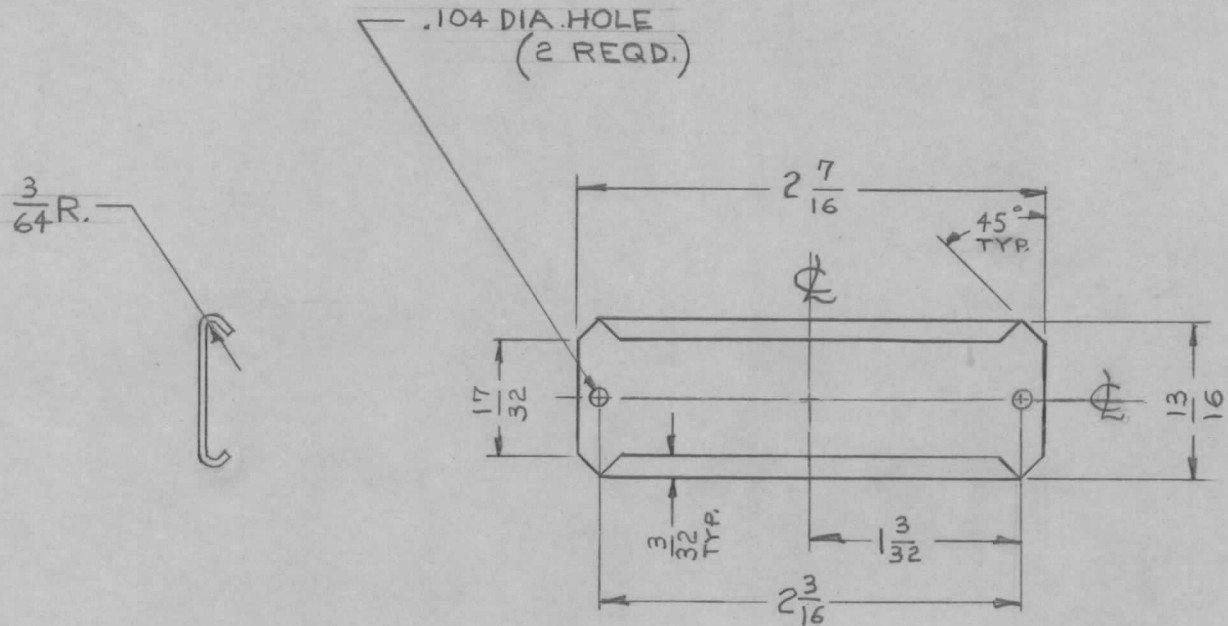


MS-2666-1	AS SHOWN
-2	OPPOSITE

REQ.	ITEM	PART NO.	DESCRIPTION			SYMBOL	
		.064 THICK	THE TECHNICAL MATERIEL CORP.				
		STOCK SIZE	MAMARONECK, NEW YORK				
		ALUMINUM	BRACKET,				
		MATERIAL	COIL MOUNTING				
B	ADD -2	12/31/69 19700 KD	John C. Biele	Handwritten	Handwritten		
A	1/32 R ADDED	10-9-62 7398	Handwritten	Handwritten	Handwritten		
ISSUE	ITEM	CHANGED FROM	DATE	CH. NO.	DRAFTS	CHECKER	ENG. APP.
TOLERANCES		SCALE: — DO NOT SCALE —					
DEC. DIM. ±		MAXIMUM ALLOWABLE TOLERANCES HAVE BEEN DETERMINED AND ANY DEVIATIONS WILL BE CAUSE FOR REJECTION.					
FRAC. DIM. ± 1/64		REMOVE ALL BURRS AND SHARP EDGES					
ANGULAR DIM. ±							
5057-H-32		TYPE & TEMPER	HEATTREAT. SPEC.	DRAWN	CHECKED	FINAL APPROVAL	
5404-IRIDITE				aa	Handwritten	MS-2666 B	
FINISH & SPEC. NO.		ELEC. DES. APP		MECH. DES. APP			

STANDARD DRAWING

REQ. PER. UNIT	USED ON		MS-2669
	MODEL	DATE	
	GDP. SER		



FINISH:
S-371 DEGREASE
S-114 ZINC CHROM

FINISH
S-371 DEGREASE
S-114 ZINC CHROMATE
PRIMER
S-115 SMOOTH GREY ENAMEL

UNLESS OTHERWISE SPECIFIED DIMENSIONS ARE IN INCHES AND INCLUDE CHEMICALLY APPLIED OR PLATED FINISHES		
DECIMALS	TOLERANCES	FRACTIONS
.X ± .05		± 1/64
.XX ± .01		ANGLES
.XXX ± .005		± 0° 30'

CUT HERE
GUARANTEED
2-66

REQ. ITEM								PART NO.		DESCRIPTION		SYMBOL	
								.012		THE TECHNICAL MATERIEL CORP.			
								STEEL		MAMARONECK, NEW YORK			
								MATERIAL		CARD HOLDER			
ISSUE	ITEM	CHANGED FROM	DATE	CH. NO.	DRAFTS	CHECKER	ENG. APP.	MILD		R. LOPEZ 9-22-61	<i>ALD</i>	<i>ALM</i>	
TOLERANCES			SCALE: DO NOT SCALE					TYPE & TEMPER	HEATTREAT. SPEC.	DRAWN	CHECKED	FINAL APPROVAL	
DEC. DIM. ±			MAXIMUM ALLOWABLE TOLERANCES HAVE BEEN DETERMINED AND ANY DEVIATIONS WILL BE CAUSE FOR REJECTION. REMOVE ALL BURRS AND SHARP EDGES					SEE NOTE:				MS-2669	
FRAC. DIM. ±								FINISH & SPEC. NO.		ELEC. DES. APP	MECH. DES. APP		
ANGULAR DIM. ±													

THE CONTENTS OF THIS DRAWING ARE THE EXCLUSIVE PROPERTY OF THE TECHNICAL MATERIEL CORP. ITS UNAUTHORIZED USE OR REPRODUCTION IN WHOLE OR IN PART IS STRICTLY FORBIDDEN.

REQ. PER UNIT

1

USED ON

MODEL

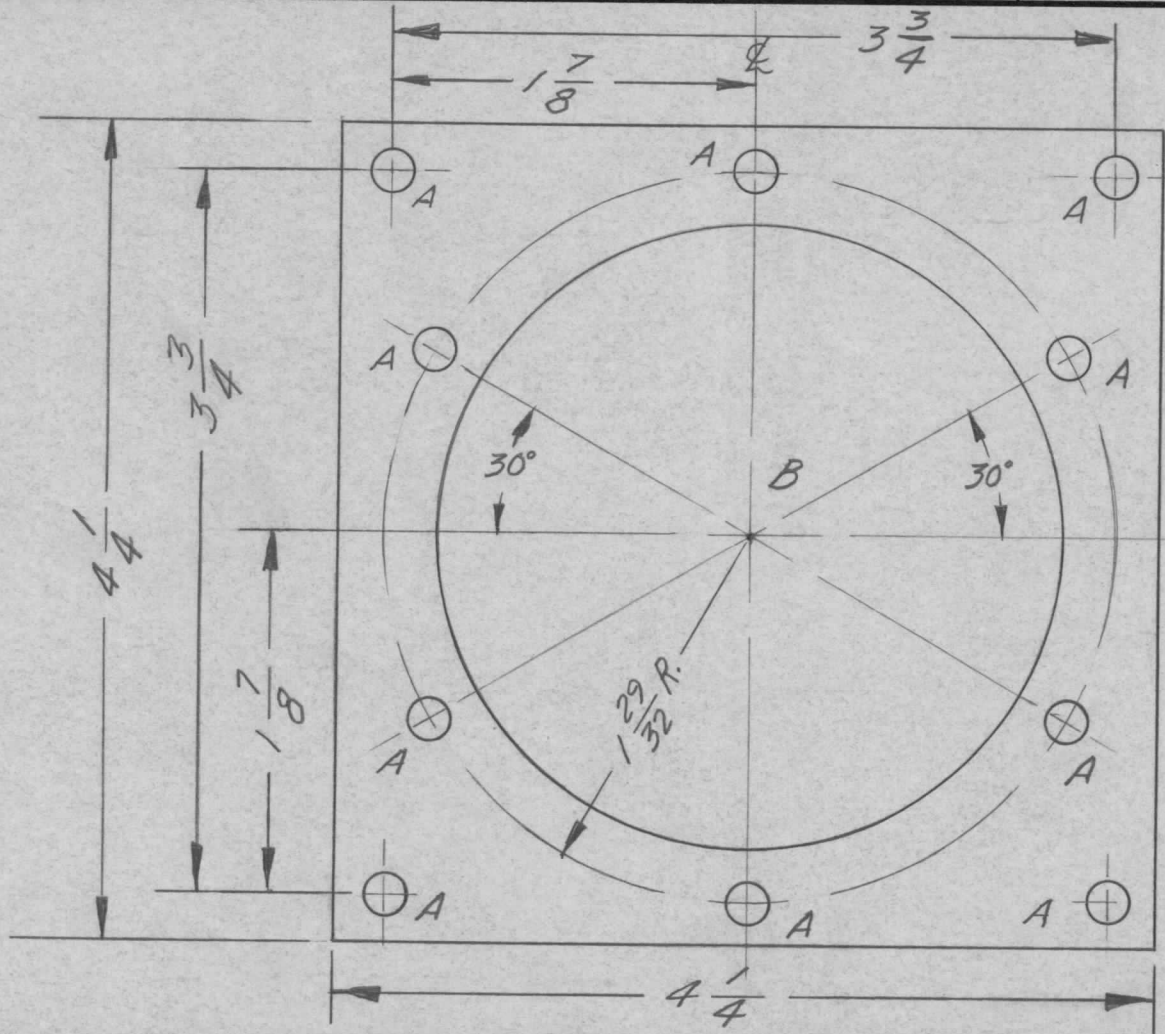
AT-103

ASS'Y. NO.

DATE

11-14-61

MS-2678



HOLES:

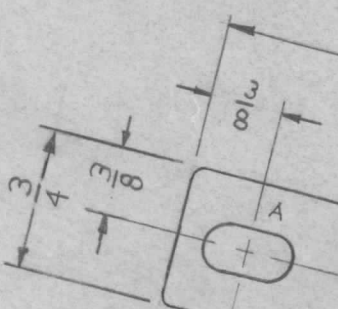
A - $\frac{13}{64}$ DIA.
B - $3\frac{1}{4}$ DIA.

10 REQ.
1 REQ.

UNLESS OTHERWISE SPECIFIED DIMENSIONS ARE IN INCHES AND INCLUDE CHEMICALLY APPLIED OR PLATED FINISHES	
DECIMALS .X ± .05 .XX ± .01 .XXX ± .005	FRACTIONS ± 1/64 ANGLES ± 0° 30'
TOLERANCES	

CUT HERE
GUARANTEED
2-66

SYM	DESCRIPTION	DATE	CH. NO.	DRAFTS	CHECKER	ENG. APP.	REQ.	ITEM	PART NO.	DESCRIPTION	SYMBOL			
								1/8		THE TECHNICAL MATERIEL CORP. MAMARONECK, NEW YORK PLATE, CAPACITOR MTG. (ANTENNA TUNER)				
								STOCK SIZE						
								ALUMINUM						
								MATERIAL						
								5052-H32		wh JWA QOB				
UNLESS OTHERWISE SPECIFIED: DIMENSIONS ARE IN INCHES TOLERANCES ON FRAC. ± 1/64 DEC. ± .005 ANGLES ± 1/2°									SCALE: DO NOT SCALE	TYPE & TEMPER 5-404 YEL IRIDITE	HEATTREAT. SPEC. FINISH & SPEC. NO.	DRAWN aa	CHECKED MS-2678	FINAL APPROVAL
MAXIMUM ALLOWABLE TOLERANCES HAVE BEEN DETERMINED AND ANY DEVIATIONS WILL BE CAUSE FOR REJECTION. REMOVE ALL BURRS AND SHARP EDGES														



USE OR STRICTLY FORBIDDEN.

REQ. PER UNIT 2

MODEL TRC 20K

USED ON ASS'Y. NO. _____

DATE 10-2-61

MS-2679 A

HOLE
A- $\frac{9}{32} \times \frac{1}{2}$ SLOT

REQ'D
2

METAL STAMP TMC PART NO. _____
1" HIGH GOTHIC



$\frac{1}{8}$ R TYP (4 SIDES)

DIMENSIONS ARE IN INCHES
 UNLESS OTHERWISE SPECIFIED
 DIMENSIONS ON THIS DRAWING ARE IN INCHES
 UNLESS OTHERWISE SPECIFIED
 DECIMALS .0005 ANGLES 30'

UNLESS OTHERWISE SPECIFIED
 DIMENSIONS ARE IN INCHES AND INCLUDE
 CHEMICALLY APPLIED OR PLATED FINISHES

DECIMALS
 .x ± .05
 .xx ± .01
 .xxx ± .005

FRACTIONS
 ± 1/64
 ANGLES
 ± 0° 30'

TOLERANCES

CUT HERE
 GUARANTEED
 2-66

CH. NO.	DRAFTS	CHECKER	ENG. APP.	REQ. ITEM	PART NO.	DESCRIPTION	SYMBOL
151	EL	OK	OK	.030	SOFT COPPER	THE TECHNICAL MATERIEL CORP. MAMARONECK, NEW YORK	
						CONNECTING STRAP	
						GROUND	
					SILVER PLATED 5245		

MINIMUM ALLOWABLE TOLERANCES HAVE
 BEEN DETERMINED AND ANY DEVIATIONS
 WILL BE CAUSE FOR REJECTION.
 REMOVE ALL BURRS AND SHARP EDGES

DRAWN EL

CHECKED OK

ELEC. DES. APP. Robt.

MECH. 2B1

FINAL APPROV. OK

THE CONTENTS OF THIS DRAWING ARE THE EXCLUSIVE PROPERTY OF THE TECHNICAL MATERIEL CORP. ITS UNAUTHORIZED USE OR REPRODUCTION IN WHOLE OR IN PART IS STRICTLY FORBIDDEN.

REQ. PER UNIT

2

MODEL

TRC-5K

USED ON

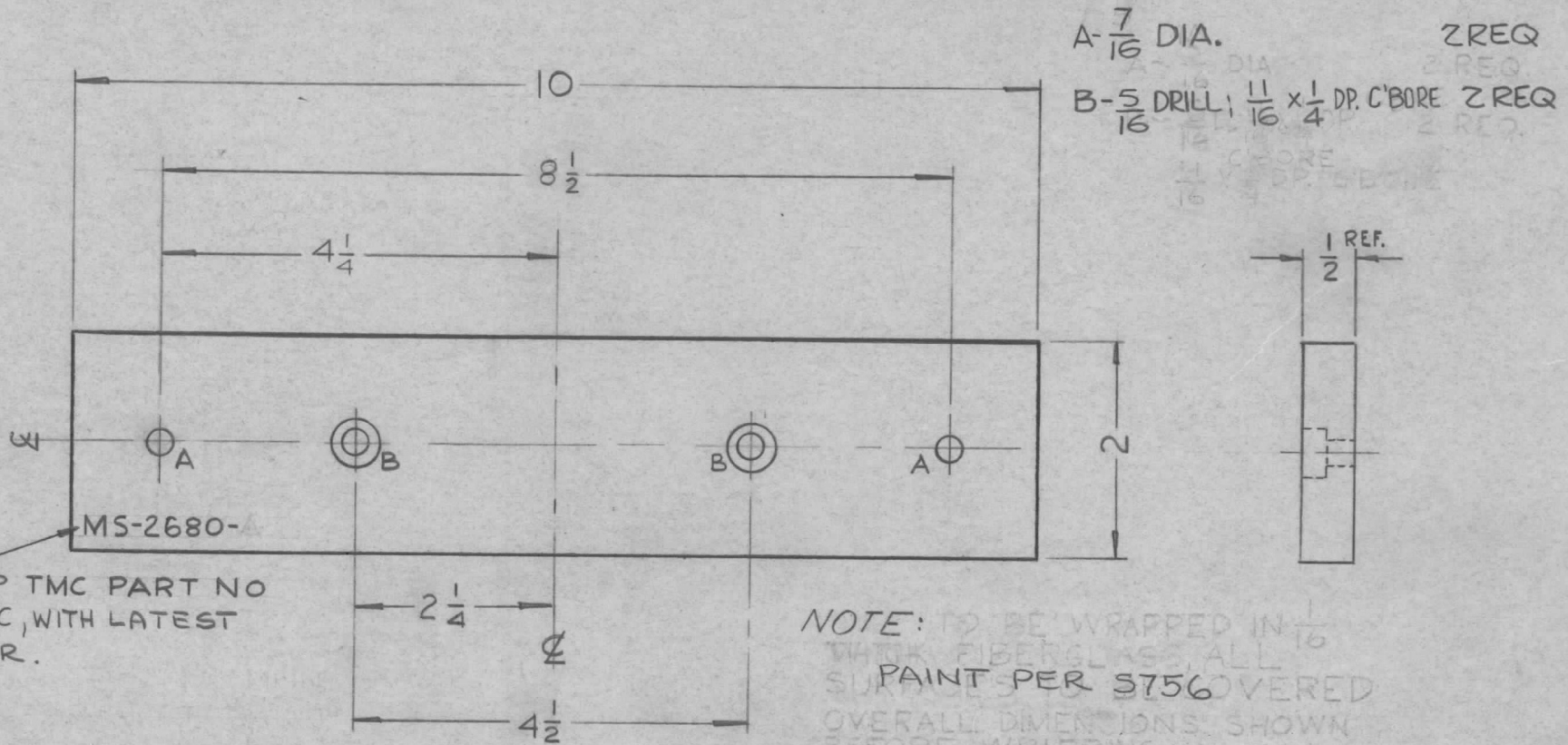
ASS'Y. NO.

A-2163

DATE

11-2-61

MS-2680 B



METAL STAMP TMC PART NO 1/8" HIGH GOTHIC, WITH LATEST REV. LETTER.

NOTE: TO BE WRAPPED IN 1/16" THICK FIBERGLASS, ALL SURFACES PER 5756 COVERED. OVERALL DIMENSIONS SHOWN BEFORE WRAPPING.

UNLESS OTHERWISE SPECIFIED	
DIMENSIONS ARE IN INCHES AND INCLUDE CHEMICALLY APPLIED OR PLATED FINISHES	
DECIMALS	FRACTIONS
.X ± .05	± 1/64
.XX ± .01	ANGLES
.XXX ± .005	± 0° 30'

CUT HERE GUARANTEED 2-66

REQ.	ITEM	PART NO.	DESCRIPTION			SYMBOL			
		1/2	THE TECHNICAL MATERIEL CORP. MAMARONECK, NEW YORK						
B	NOTE WAS "WRAPPED IN FIBERGLASS FINISH WAS "S404 YELL. IRIDITE"	8.17.64 12117	KB	@	209				
A	COMPLETELY REDRAWN & REVISED	11-2-61 5743	JA	BA	205				
SYM	DESCRIPTION	DATE	CH. NO.	DRAFTS	CHECKER	ENG. APP.			
UNLESS OTHERWISE SPECIFIED: DIMENSIONS ARE IN INCHES TOLERANCES ON FRAC. ± 1/64 DEC. ± .005 ANGLES ± 1/2°		SCALE: DO NOT SCALE		2024-T3			LL	RUZZO	209
MAXIMUM ALLOWABLE TOLERANCES HAVE BEEN DETERMINED AND ANY DEVIATIONS WILL BE CAUSE FOR REJECTION. REMOVE ALL BURRS AND SHARP EDGES		TYPE & TEMPER		HEAT TREAT. SPEC.		DRAWN	CHECKED	FINAL APPROVAL	
		54 SEE NOTE					aa	MS-2680 B	
		FINISH & SPEC. NO.		ELEC. DES. APP.		MECH. DES. APP.			

THE CONTENTS OF THIS DRAWING ARE THE EXCLUSIVE PROPERTY OF THE TECHNICAL MATERIEL CORP. ITS UNAUTHORIZED USE OR REPRODUCTION IN WHOLE OR IN PART IS STRICTLY FORBIDDEN.

REQ. PER UNIT

2

MODEL

TRC-20K

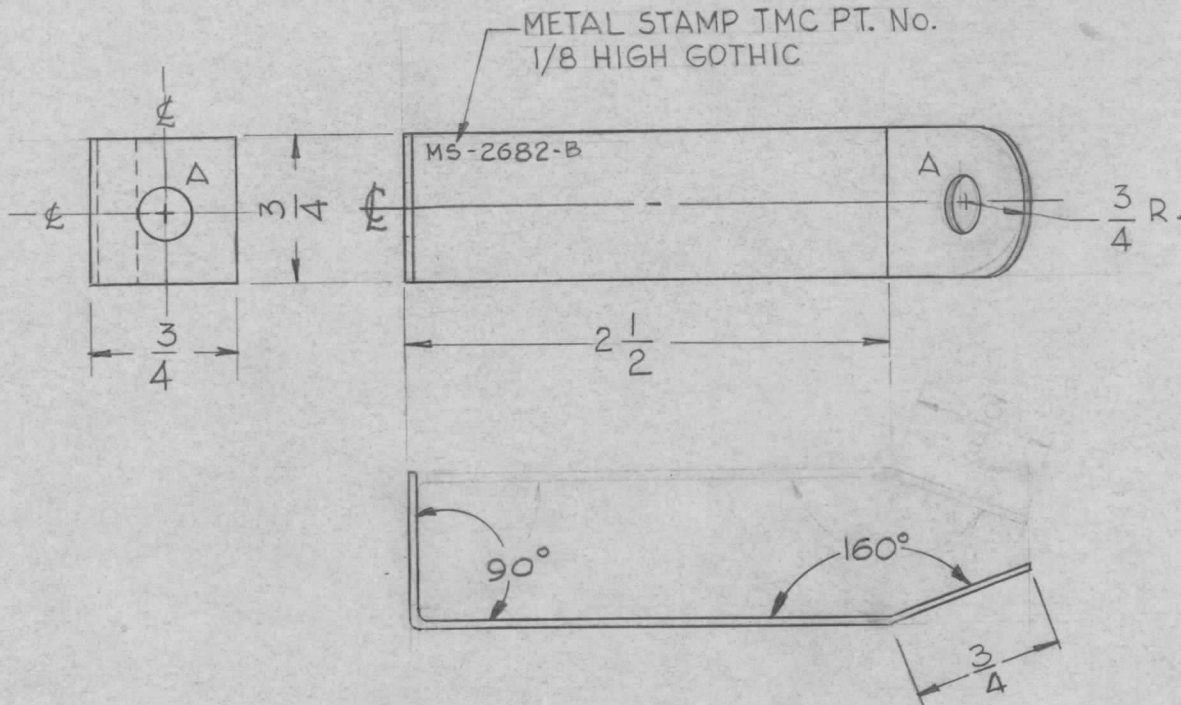
USED ON

ASS'Y. NO.

DATE

12-28-61

M5-2682 B



UNLESS OTHERWISE SPECIFIED DIMENSIONS ARE IN INCHES AND INCLUDE CHEMICALLY APPLIED OR PLATED FINISHES		
DECIMALS	TOLERANCES	FRACTIONS
.X ± .05		± 1/64
.XX ± .01		ANGLES
.XXX ± .005		± 0° 30'

CUT HERE
GUARANTEED
2-66

BLANK SIZE 3 15/16 x 3/4

REQ.	ITEM	PART NO.	DESCRIPTION				SYMBOL	
		.015	THE TECHNICAL MATERIEL CORP.					
		STOCK SIZE	MAMARONECK, NEW YORK					
B	2REQ. PER UNIT WAS 19	5-23-62 6717	EE	Hle	QB	STRAP, CENTER, 50Ω		
A	REDRAWN AND REVISED	12-28-61 6109	G.D.L.	SB	QB			
SYM	DESCRIPTION	DATE	CH. NO.	DRAFTS	CHECKER	ENG. APP.		
UNLESS OTHERWISE SPECIFIED: DIMENSIONS ARE IN INCHES TOLERANCES ON FRAC. ± 1/64 DEC. ± .005 ANGLES ± 1/2°		SCALE: MAXIMUM ALLOWABLE TOLERANCES HAVE BEEN DETERMINED AND ANY DEVIATIONS WILL BE CAUSE FOR REJECTION. REMOVE ALL BURRS AND SHARP EDGES		SOFT		G.D.L.	Rizzo	SAM
		TYPE & TEMPER		HEAT TREAT. SPEC.		DRAWN	CHECKED	FINAL APPROVAL
		SILVER PLATE S245				QB	MC	M5-2682 B
		FINISH & SPEC. NO.		ELEC. DES. APP.		MECH. DES. APP.		

THE CONTENTS OF THIS DRAWING ARE THE EXCLUSIVE PROPERTY OF THE TECHNICAL MATERIEL CORP. ITS UNAUTHORIZED USE OR REPRODUCTION IN WHOLE OR IN PART IS STRICTLY FORBIDDEN.

REQ. PER UNIT

1

USED ON

MODEL

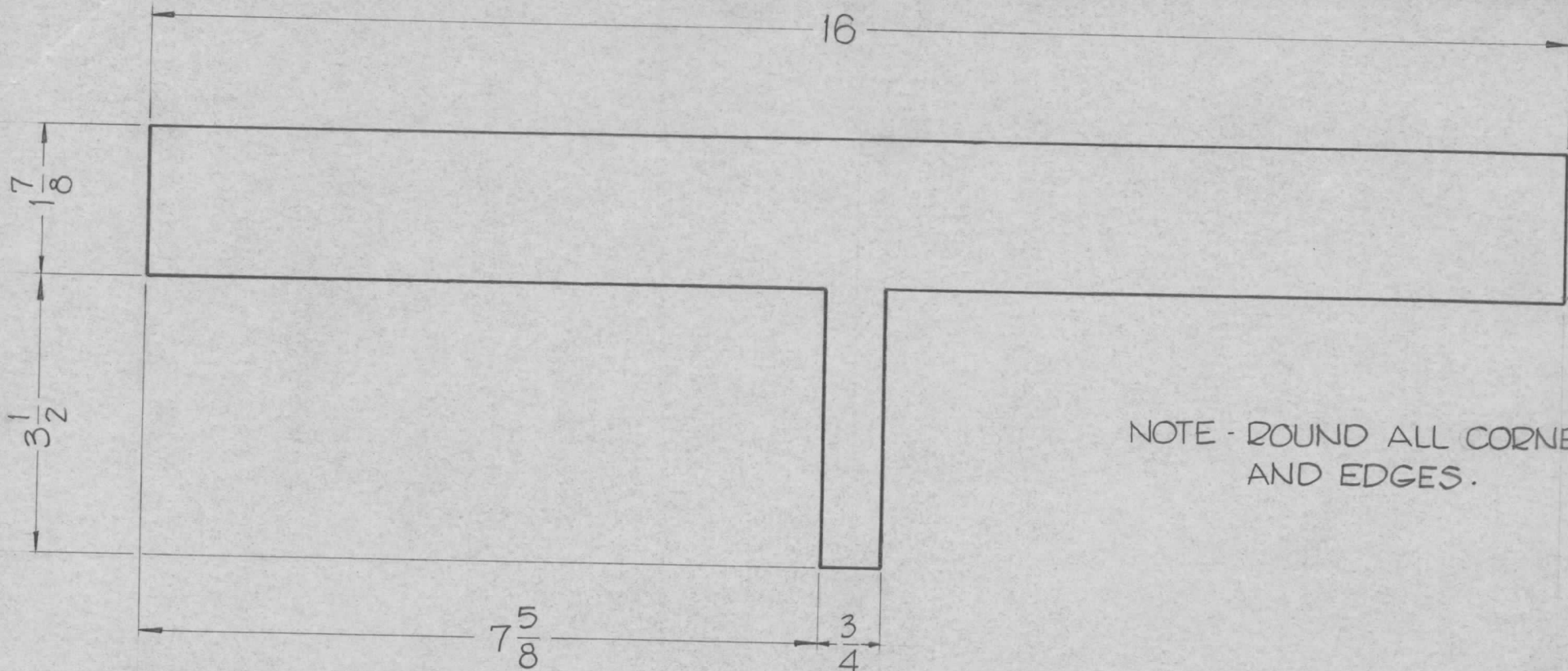
TR-167

ASS'Y. NO.

DATE

10-7-61

MS-2689



NOTE - ROUND ALL CORNERS AND EDGES.

UNLESS OTHERWISE SPECIFIED DIMENSIONS ARE IN INCHES AND INCLUDE CHEMICALLY APPLIED OR PLATED FINISHES

DECIMALS	FRACTIONS
.X ± .05	± 1/64
.XX ± .01	ANGLES ± 0° 30'
.XXX ± .005	

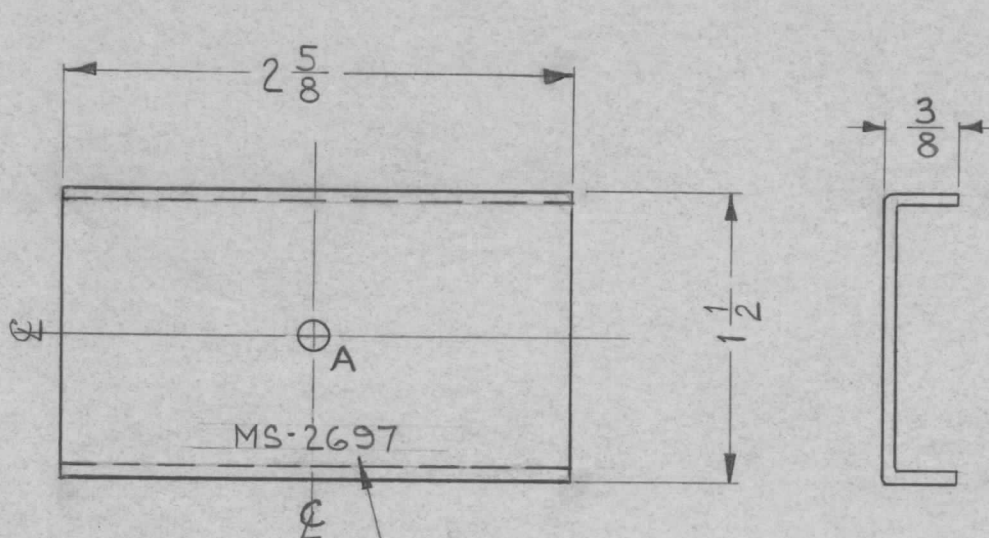
CUT HERE GUARANTEED 2-66

REQ.	ITEM	PART NO.	DESCRIPTION	SYMBOL						
		.012 THICK	THE TECHNICAL MATERIEL CORP. MAMARONECK, NEW YORK	SHIELD, TRANSFORMER						
		STOCK SIZE								
		ALUMINUM								
		MATERIAL								
SYM	DESCRIPTION	DATE	CH. NO.	DRAFTS	CHECKER	ENG. APP.				
UNLESS OTHERWISE SPECIFIED: DIMENSIONS ARE IN INCHES TOLERANCES ON FRAC. ± 1/64 DEC. ± .005 ANGLES ± 1/2°		SCALE: (DO NOT SCALE)		MAXIMUM ALLOWABLE TOLERANCES HAVE BEEN DETERMINED AND ANY DEVIATIONS WILL BE CAUSE FOR REJECTION. REMOVE ALL BURRS AND SHARP EDGES		TYPE & TEMPER	HEAT TREAT. SPEC.	DRAWN	CHECKED	FINAL APPROVAL
						5404 - IRIDITE		aa		MS-2689
						FINISH & SPEC. NO.	ELEC. DES. APP.	MECH. DES. APP.		

THE CONTENTS OF THIS DRAWING ARE THE EXCLUSIVE PROPERTY OF THE TECHNICAL MATERIEL CORP. ITS UNAUTHORIZED USE OR REPRODUCTION IN WHOLE OR IN PART IS STRICTLY FORBIDDEN.

REQ. PER UNIT	USED ON		
	MODEL	ASS'Y. NO.	DATE
1	SBS-1 Power Supply	A-2209-5	10-14-61
1	HFP-1	A-2382-12	3-26-62

MS-2697



METAL STAMP TMC PART NO. AS SHOWN $\frac{1}{8}$ HIGH GOTHIC.

USE MATERIAL THICKNESS FOR MAX. RADIUS ON ALL BENDS UNLESS OTHERWISE SPECIFIED

UNLESS OTHERWISE SPECIFIED DIMENSIONS ARE IN INCHES AND INCLUDE CHEMICALLY APPLIED OR PLATED FINISHES	
DECIMALS	FRACTIONS
.X ± .05	± 1/64
.XX ± .01	ANGLES
.XXX ± .005	± 0° 30'

CUT HERE GUARANTEED 2-66

SYM	DESCRIPTION	DATE	CH. NO.	DRAFTS	CHECKER	ENG. APP.	REQ. ITEM	PART NO.	DESCRIPTION	SYMBOL			
								.064	THE TECHNICAL MATERIEL CORP. MAMARONECK, NEW YORK	BRACKET, SUPPORT, CAPACITOR			
								STOCK SIZE					
								ALUMINUM					
								MATERIAL					
							5052-H32		W.A.F.	JCB			
UNLESS OTHERWISE SPECIFIED: DIMENSIONS ARE IN INCHES. TOLERANCES ON FRAC. ± 1/64 DEC. ± .005 ANGLES ± 1/2°		SCALE: DO NOT SCALE		MAXIMUM ALLOWABLE TOLERANCES HAVE BEEN DETERMINED AND ANY DEVIATIONS WILL BE CAUSE FOR REJECTION. REMOVE ALL BURRS AND SHARP EDGES					TYPE & TEMPER	HEATTREAT. SPEC.	DRAWN	CHECKED	FINAL APPROVAL
									S404 YEL. IRIDITE		RK	Just for	MS-2697
									FINISH & SPEC. NO.	ELEC. DES. APP.	MECH. DES. APP.		

THE CONTENTS OF THIS DRAWING ARE THE EXCLUSIVE PROPERTY OF THE TECHNICAL MATERIEL CORP. ITS UNAUTHORIZED USE OR REPRODUCTION IN WHOLE OR IN PART IS STRICTLY FORBIDDEN.

REQ. PER UNIT

2

MODEL

KIT-113

USED ON

ASS'Y. NO.

DATE

10-13-61

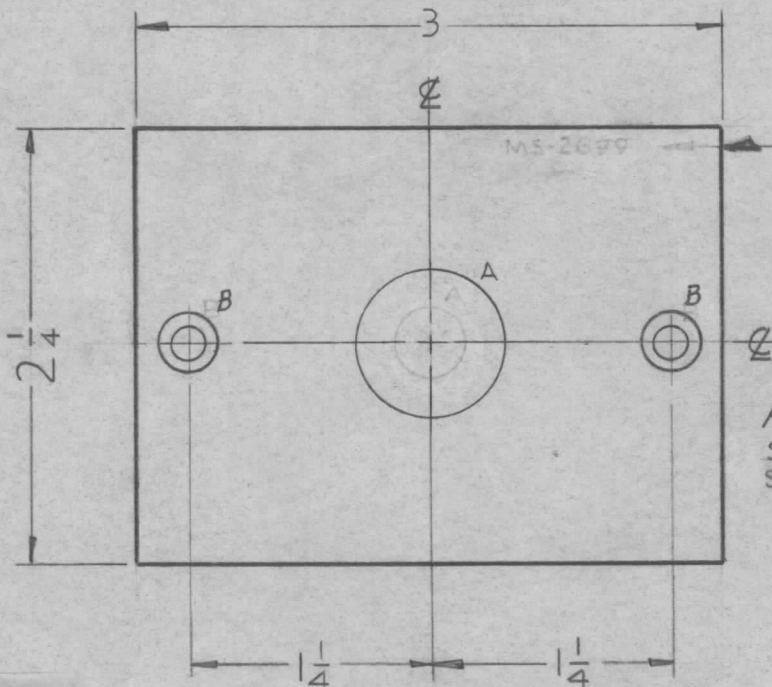
MS-2699 A

HOLE REREQ'D.

A - $\frac{3}{4}$ DIA. ——— 1

B - ϕ -32 DRILL & C'SINK - 2

FINISH:
S-404 Yellow Iridite - All Over
S-115 Smooth Gray Enamel - All Edges & Front.



Metal Stamp TMC Part No. MS-2699
 $\frac{1}{8}$ " High Gothic On Rear of Panel.

FINISH
S-404 YELLOW IRIDITE - ALL OVER
S-115 SMOOTH GRAY ENAMEL - ALL EDGES & FRONT.

FRONT VIEW OF PANEL SHOWN

UNLESS OTHERWISE SPECIFIED DIMENSIONS ARE IN INCHES AND INCLUDE CHEMICALLY APPLIED OR PLATED FINISHES	
DECIMALS	FRACTIONS
.X ± .05	± 1/64
.XX ± .01	ANGLES
.XXX ± .005	± 0° 30'
TOLERANCES	

CUT HERE
GUARANTEED
2-66

REF. { LD-990
LD-991

REQ.	ITEM	PART NO.	DESCRIPTION				SYMBOL	
		.064	THE TECHNICAL MATERIEL CORP.					
		STOCK SIZE	MAMARONECK, NEW YORK					
A	"A" HOLE WAS $\frac{3}{4}$ DIA.	G12G3 9245	<i>Q</i>	<i>MS</i>	<i>Q</i>	ALUMINUM	PLATE, MOUNTING, SWITCH OUTPUT & SWR	
SYM	DESCRIPTION	DATE	CH. NO.	DRAFTS	CHECKER	ENG. APP.		
UNLESS OTHERWISE SPECIFIED: DIMENSIONS ARE IN INCHES TOLERANCES ON		SCALE:		MAXIMUM ALLOWABLE TOLERANCES HAVE BEEN DETERMINED AND ANY DEVIATIONS WILL BE CAUSE FOR REJECTION. REMOVE ALL BURRS AND SHARP EDGES				
FRAC. ± 1/64 DEC. ± .005 ANGLES ± 1/2°		A		5052-H32		E. E.	<i>DDWam</i>	
		TYPE & TEMPER	HEATTREAT. SPEC.	DRAWN	CHECKED	FINAL APPROVAL		
		SEE NOTE (S-115)		<i>OB</i>	<i>UA</i>	MS-2699	A	
		FINISH & SPEC. NO.	ELEC. DES. APP.	MECH. DES. APP.				