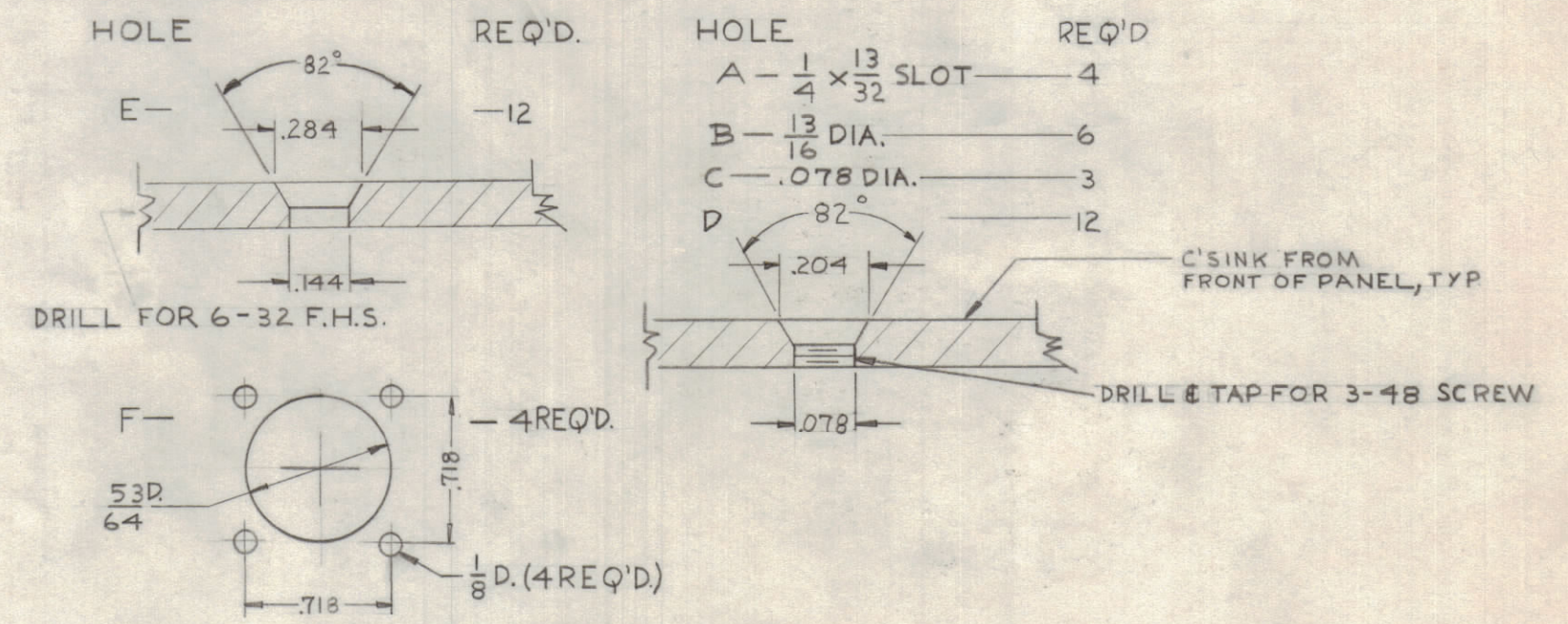


- NOTES:**
1. LATERAL BOW OF PANEL MUST BE KEPT TO .031 TOL.
 2. HOLES MUST BE DRILLED.
 3. MILL ALL EDGES.
 4. ALL THREADED HOLES & HOLE DIA. MUST BE HELD AFTER ETCHING.
 5. ALL "E" HOLES TO BE HELD TO DECIMAL TOLERANCE AS SHOWN.
 6. ALL "D" HOLES TO BE HELD TO FRACTIONAL TOLERANCE AS SHOWN.

FINISH: FRONT & EDGES ONLY
 S404-YEL-IRIDITE
 S-114-ZINC CHROMATE PRIMER
 S-115-SMOOTH GRAY ENAMEL



SYM	ZONE	DESCRIPTION	DATE	CH. NO.	DRAFTS	CHECKER	ENG. APP.
UNLESS OTHERWISE SPECIFIED:							
DIMENSIONS ARE IN INCHES			SCALE				
TOLERANCES ON			MAXIMUM ALLOWABLE TOLERANCES HAVE BEEN DETERMINED AND ANY DEVIATIONS WILL BE CAUSE FOR REJECTION. REMOVE ALL BURRS & SHARP EDGES				
FRACTIONS ± 1/64		DECIMALS ± .005	ANGLES ± 1/2°				

UNLESS OTHERWISE SPECIFIED DIMENSIONS ARE IN INCHES AND INCLUDE CHEMICALLY APPLIED OR PLATED FINISHES

DECIMALS	FRACTIONS
.X ± .05	± 1/64
.XX ± .01	ANGLES ± 0° 30'
.XXX ± .005	

TOLERANCES

CUT HERE GUARANTEED 2-60

1	SPP-3SP34			10-11-61
REQ. PER UNIT	MODEL	SECTION	ASS'Y. NO.	DATE

REQ. ITEM	PART NO.	DESCRIPTION	SYMBOL
	3/16	THE TECHNICAL MATERIEL CORP. MAMARONECK, NEW YORK	
	ALUMINUM	FRONT PANEL	
	2024-T3	EA	
	TYPE & TEMPER	HEAT TREAT. SPEC.	
	SEE NOTES		
	FINISH & SPEC. NO.	ELEC. DES. APP.	MECH. DES. APP.