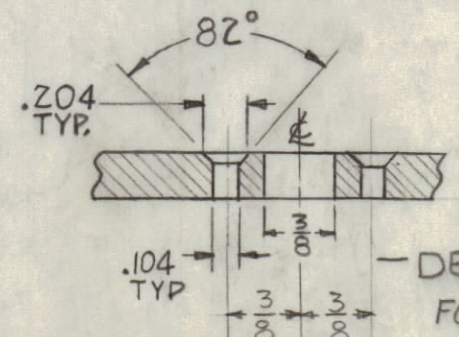
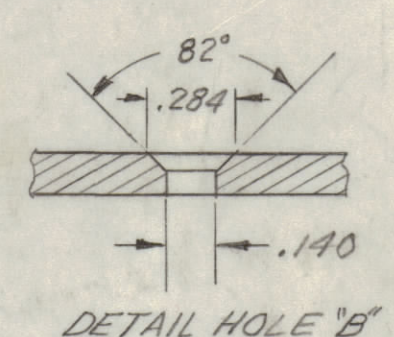


- HOLES:**
- A - .191 - .194 DIA. 6 REQ.
 - B - DRILL & C/SINK FOR 6-32 (SEE DETAIL) 4 REQ.
 - C - .221 - .224 DIA. 7 REQ.
 - D - 1/2 DIA. 40 REQ.
 - E - SEE DETAIL 3 REQ.
 - F - (SEE DETAIL) 4 REQ.
 - G - 3/8 DIA. 4 REQ.



NOTE:
 USE MATERIAL THICKNESS FOR MAX. RADIUS ON ALL BENDS UNLESS OTHERWISE SPECIFIED
 MOUNT INSERTS AFTER FINISHING

UNLESS OTHERWISE SPECIFIED DIMENSIONS ARE IN INCHES AND INCLUDE CHEMICALLY APPLIED OR PLATED FINISHES		TOLERANCES	
DECIMALS	FRACTIONS	± 1/64 ANGLES ± 0° 30'	
± .005	± 1/32		
D 6-2, 63 CHG (XSM, WLD, INSD) TO (XSM, WLD, OUTSD, E GRIND SMOOTH) 3-13-64 11038 JTB C ADDED 2 "E" HOLES 2-27-64 10967 AM B EB-GB 4" G HOLES ADDED (TOP VIEW) 1-12-62 6221 GDL A AG-A2 ON DETAIL "E" DIM. 3/8 ADDED, STOCK SIZE WAS .064 11-10-61 8546 C-DL			
SYM	ZONE	DESCRIPTION	DATE CH. NO. DRAFTS CHECKER ENG. APP.
		UNLESS OTHERWISE SPECIFIED: DIMENSIONS ARE IN INCHES TOLERANCES ON FRACTIONS ± 1/64 DECIMALS ± .005 ANGLES ± 1/2°	SCALE: MAXIMUM ALLOWABLE TOLERANCES HAVE BEEN DETERMINED AND ANY DEVIATIONS WILL BE CAUSE FOR REJECTION. REMOVE ALL BURRS & SHARP EDGES

NOTICE TO PERSONS RECEIVING THIS DRAWING
 THE TECHNICAL MATERIEL CORPORATION claims proprietary right in the material disclosed hereon. This drawing is issued in confidence for engineering information only and may not be reproduced or used to manufacture anything shown hereon without permission from THE TECHNICAL MATERIEL CORPORATION to the user. This drawing is loaned for mutual assistance and is subject to recall at any time.
 Property of:
 THE TECHNICAL MATERIEL CORPORATION
 MAMARONECK, NEW YORK

REQ. PER UNIT	MODEL	SECTION	ASS'Y. NO.	DATE
1	SBS-1	PWR SUPPLY	A-2209-5	10-12-61
USED ON				

7	2	NT129-0832-4	NUT, SWAGE TYPE	C
6	1	NT129-0632-4	NUT, SWAGE TYPE	A
REQ. ITEM		PART NO.	DESCRIPTION	SYMBOL
		.081	THE TECHNICAL MATERIEL CORP. MAMARONECK, NEW YORK	
		ALUMINIUM	CHASSIS, ELECTRICAL EQUIPMENT POWER SUPPLY SECTION, MAIN	
		5052-H32	DRWN: [Signature] CHECKED: [Signature] FINAL APPROVAL: [Signature]	
		TYPE & TEMPER	HEAT TREAT. SPEC.	
		5404 YEL IRIDIUM		
		FINISH & SPEC. NO.	ELEC. DES. APP. MECH. DES. APP. SHEET OF	
			MS-2683 D	