

THE CONTENTS OF THIS DRAWING ARE THE EXCLUSIVE PROPERTY OF THE TECHNICAL MATERIEL CORP. ITS UNAUTHORIZED USE OR REPRODUCTION IN WHOLE OR IN PART IS STRICTLY FORBIDDEN.

REQ. PER UNIT

1

USED ON

MODEL

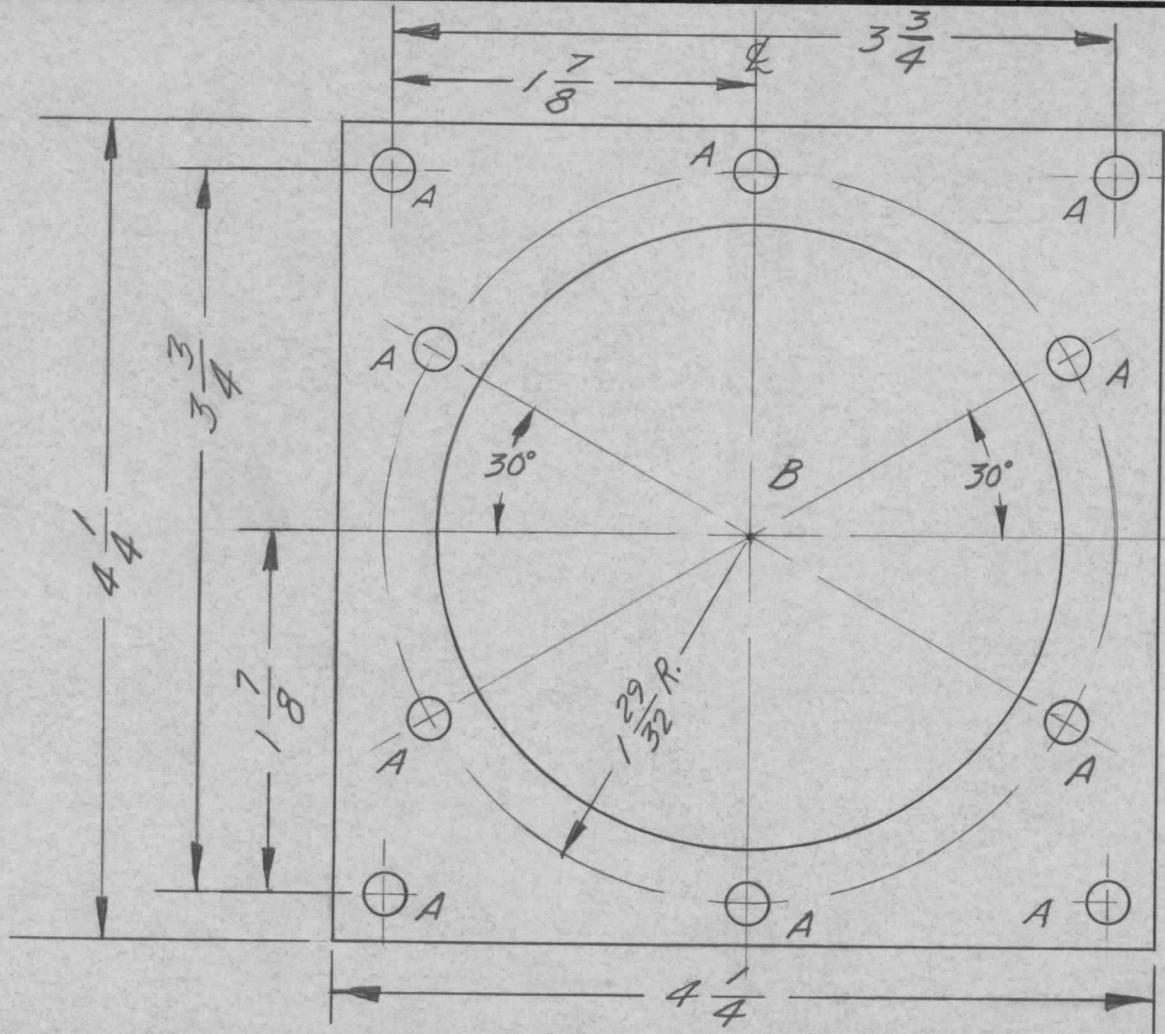
AT-103

ASS'Y. NO.

DATE

11-14-61

MS-2678



HOLES:

A -  $\frac{13}{64}$  DIA.  
B -  $3\frac{1}{4}$  DIA.

10 REQ.  
1 REQ.

UNLESS OTHERWISE SPECIFIED DIMENSIONS ARE IN INCHES AND INCLUDE CHEMICALLY APPLIED OR PLATED FINISHES	
DECIMALS .X ± .05 .XX ± .01 .XXX ± .005	FRACTIONS ± 1/64 ANGLES ± 0° 30'

CUT HERE GUARANTEED 2-66

SYM	DESCRIPTION	DATE	CH. NO.	DRAFTS	CHECKER	ENG. APP.	REQ.	ITEM	PART NO.	DESCRIPTION	SYMBOL	
									1/8	THE TECHNICAL MATERIEL CORP. MAMARONECK, NEW YORK PLATE, CAPACITOR MTG. (ANTENNA TUNER)		
									STOCK SIZE			
									ALUMINUM			
									MATERIAL			
									5052-H32	wh	fw	OB
									TYPE & TEMPER	DRAWN	CHECKED	FINAL APPROVAL
									HEATTREAT. SPEC.			
									5-404 YEL IRIDITE		aa	MS-2678
									FINISH & SPEC. NO.	ELEC. DES. APP.	MECH. DES. APP.	

UNLESS OTHERWISE SPECIFIED:  
DIMENSIONS ARE IN INCHES  
TOLERANCES ON  
FRAC. ± 1/64 DEC. ± .005 ANGLES ± 1/2°

SCALE: DO NOT SCALE  
MAXIMUM ALLOWABLE TOLERANCES HAVE BEEN DETERMINED AND ANY DEVIATIONS WILL BE CAUSE FOR REJECTION.  
REMOVE ALL BURRS AND SHARP EDGES