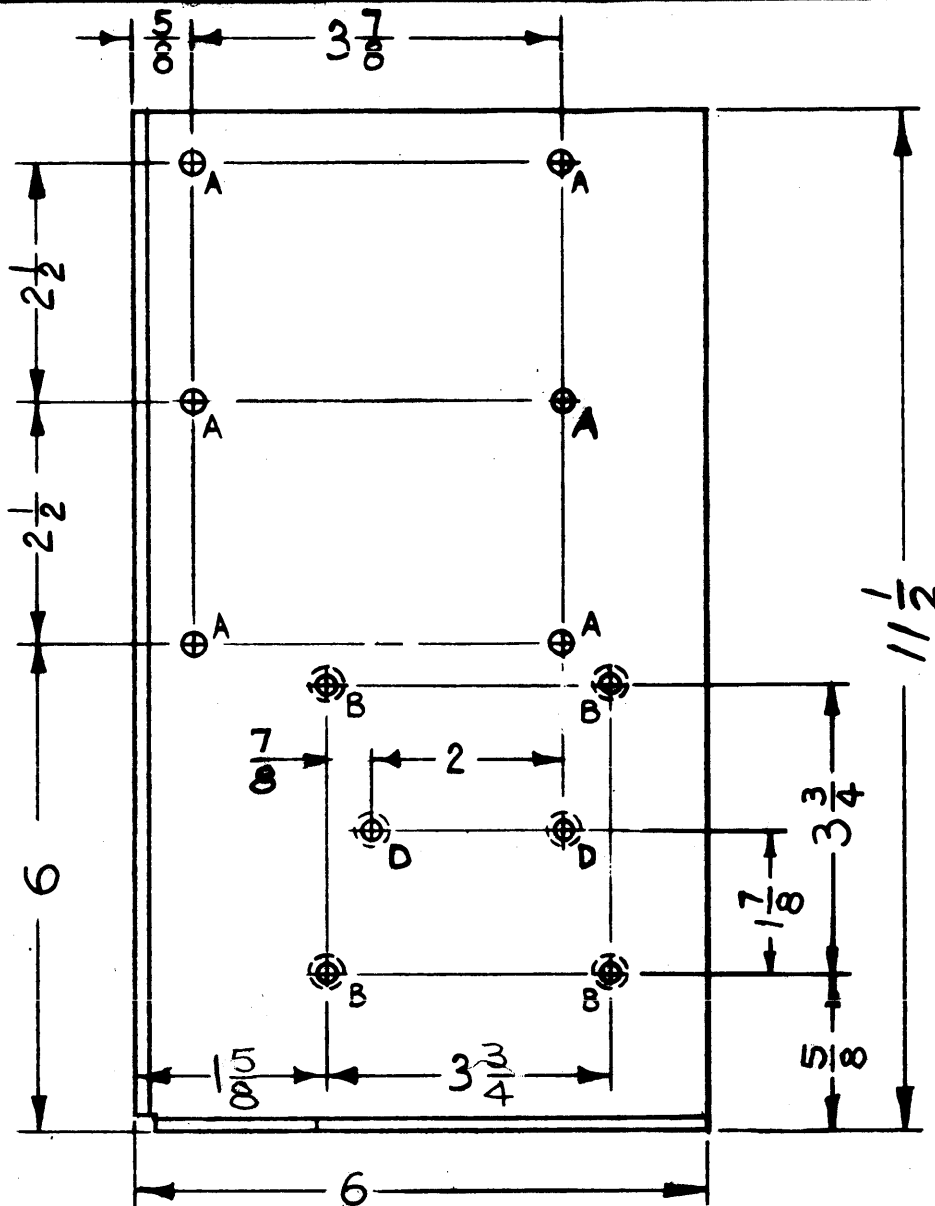
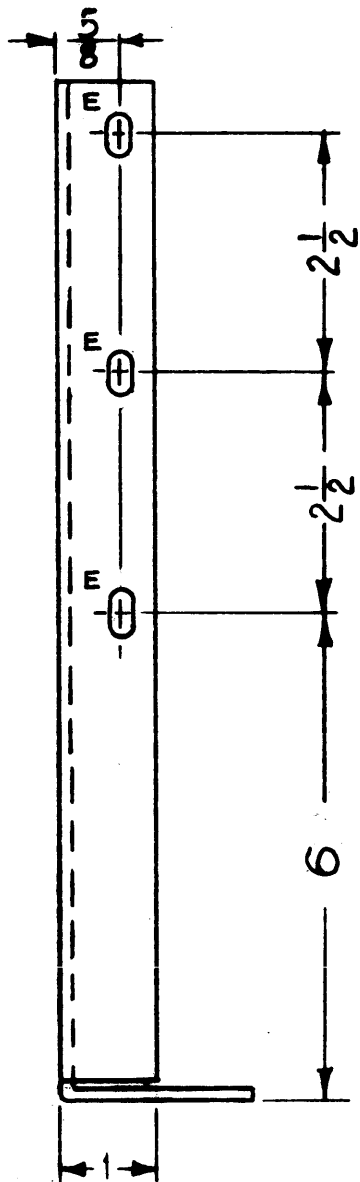
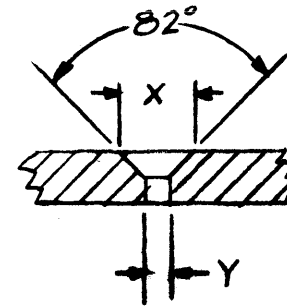


MS-2677



- A - $\frac{13}{64}$ DIA. 8 REQ
- B - SEE CHART 4 "
- C - $\frac{11}{16}$ DIA. 1 "
- D - SEE CHART 2 "
- E - $\frac{7}{32} \times \frac{7}{16}$ SLOT 3 "

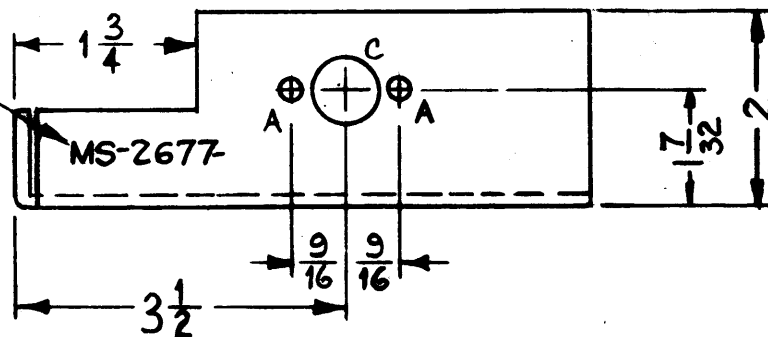


- CHART -

HOLE	SCREW	Y	X
B	10-32	.196	.390
D	8-32	.169	.337

USE MATERIAL THICKNESS FOR MAX. RADIUS ON ALL BENDS UNLESS OTHERWISE SPECIFIED.

METAL STAMP TMC
PART NO 1/8 HIGH
GOTHIC AS SHOWN,
WITH LATEST
REVISION LETTER



REF: LD-981 (2)

SYM	DESCRIPTION	DATE	CH. NO.	DRAFTS	CHECKER	ENG. APP.
B	"E" SLOTS WERE "A" HOLES	5-26-64	11428	JMB		
A	DIM. 1/32 WAS 1/8	12-2-61	5990	G DL		

UNLESS OTHERWISE SPECIFIED:
DIMENSIONS ARE IN INCHES
TOLERANCES ON FRACTIONS $\pm 1/64$ DECIMALS $\pm .005$ ANGLES $\pm 1/2$

SCALE: 2:1 DO NOT SCALE
MAXIMUM ALLOWABLE TOLERANCES HAVE BEEN DETERMINED AND ANY DEVIATIONS WILL BE CAUSE FOR REJECTION.
REMOVE ALL BURRS AND SHARP EDGES

REQ. PER UNIT	MODEL	SECTION	APPV. NO.	DATE
1	AT-103	GPT-406		10-26-61

USED ON

REQ.	ITEM	PART NO.	DESCRIPTION	SYMBOL
	1/8		THE TECHNICAL MATERIEL CORP. MAMARONECK, NEW YORK	
	ALUMINUM		BRACKET, CAPACITOR	
	5052-H32		AP - RLZZO	
	S404 YELL. IRIDITE		MECH. DES. APP.	MS-2677