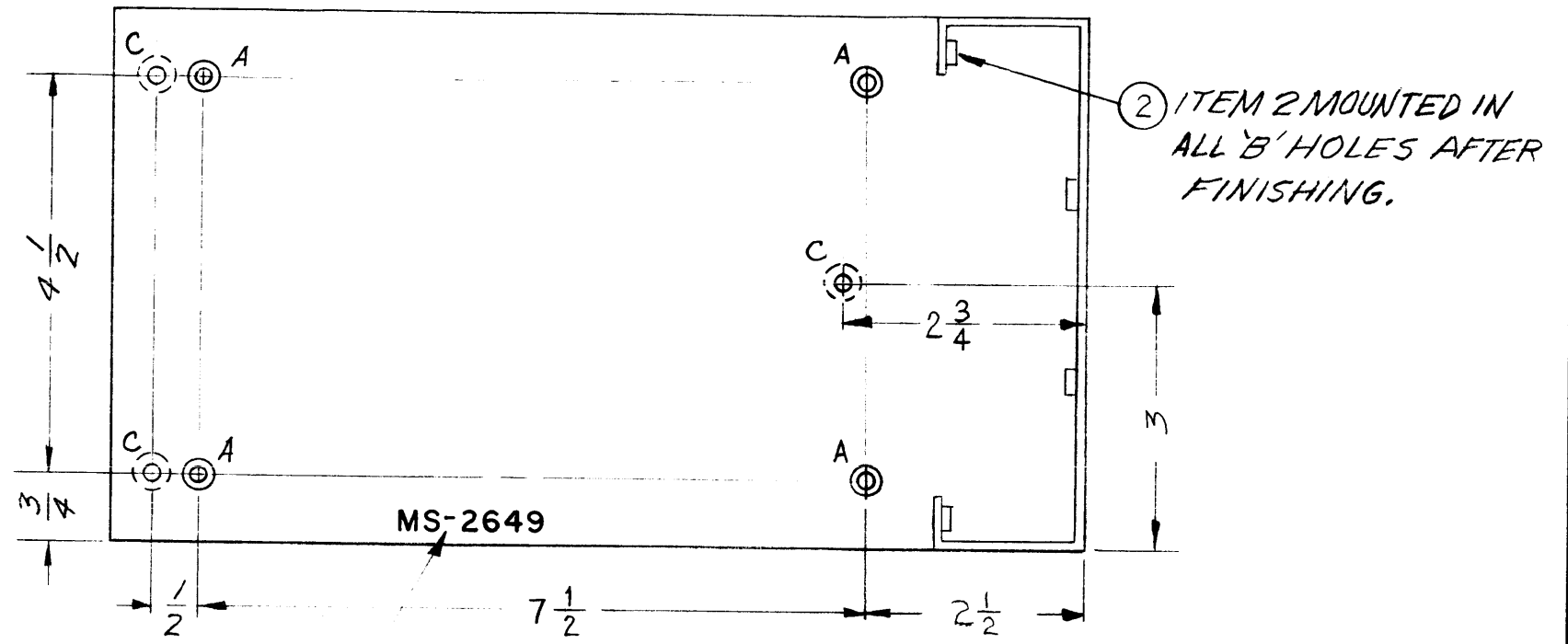
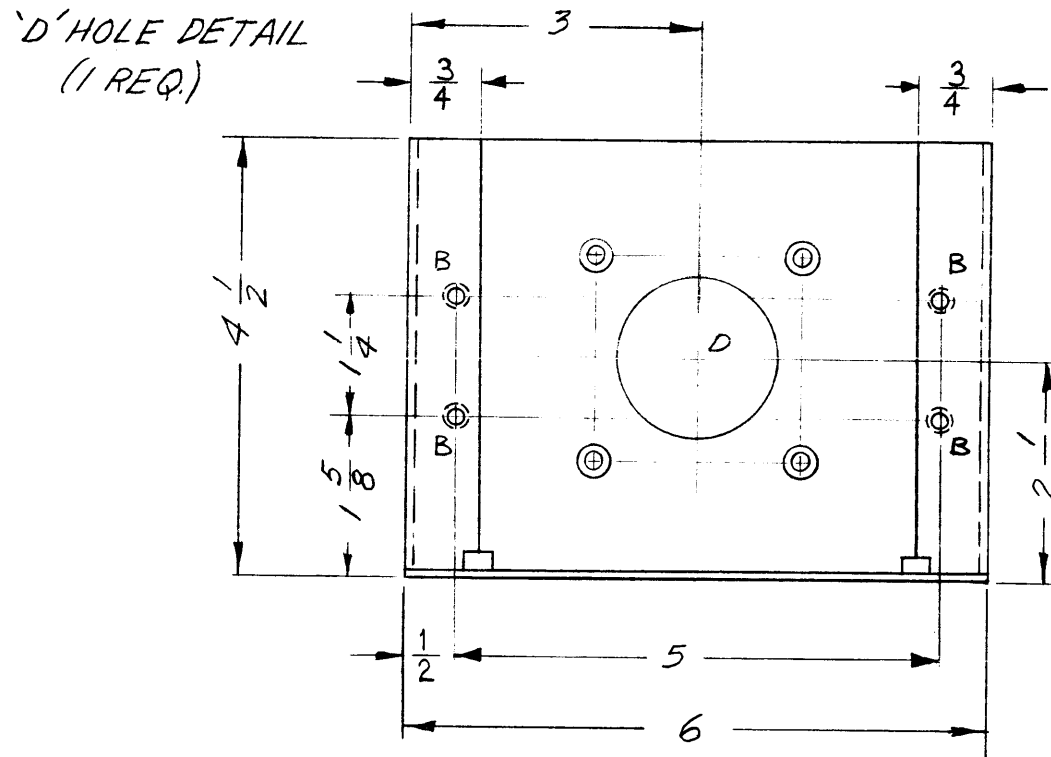
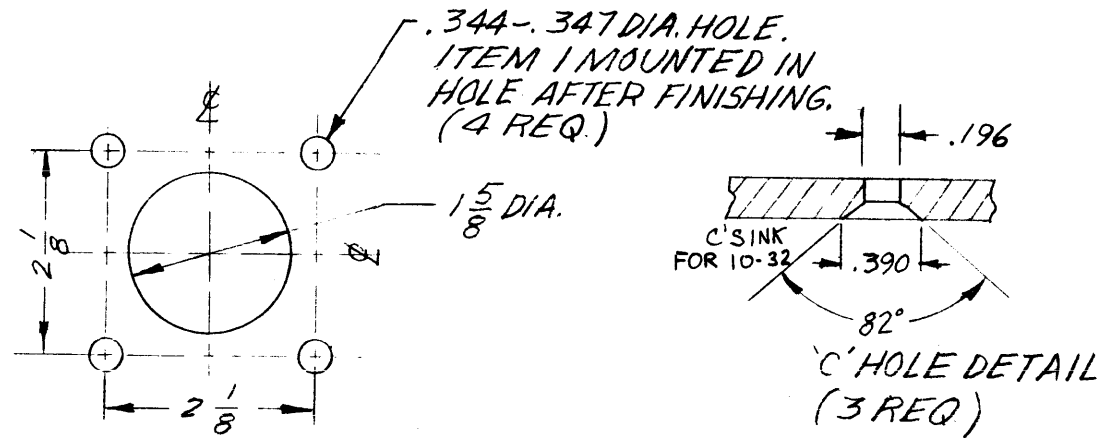


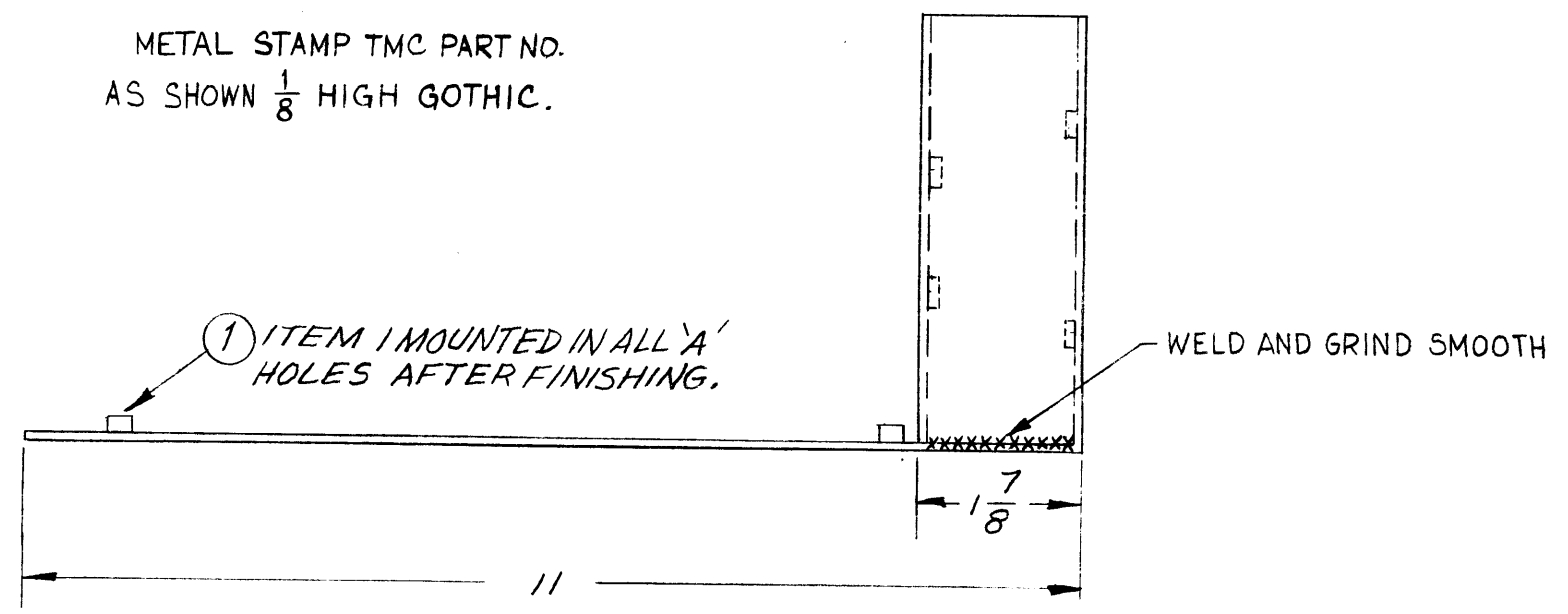
MS-2649 A

HOLE'S

- A- .344-.347 DIA.
- B- .250-.253 DIA.



METAL STAMP TMC PART NO.
AS SHOWN 1/8 HIGH GOTHIC.



USE MATERIAL THICKNESS FOR MAX. RADIUS
ON ALL BENDS UNLESS OTHERWISE SPECIFIED

MOUNT INSERTS AFTER FINISHING

SYM	DESCRIPTION	DATE	CH. NO.	DRAFTS	CHECKER	ENG. APP.
1	"AND GRIND SMOOTH" ADDED TO WELD NOTE	11-11-61	5855	G.D.L.	<i>[Signature]</i>	<i>[Signature]</i>

UNLESS OTHERWISE SPECIFIED:
DIMENSIONS ARE IN INCHES
TOLERANCES ON FRACTIONS ± 1/64 DECIMALS ± .005 ANGLES ± 1/2°

SCALE: 1/2" = 1"

MAXIMUM ALLOWABLE TOLERANCES HAVE BEEN DETERMINED AND ANY DEVIATIONS WILL BE CAUSE FOR REJECTION. REMOVE ALL BURRS AND SHARP EDGES

REQ. PER UNIT	MODEL	SECTION	ASS'Y. NO.	DATE
	TR-167			9-14-61

USED ON

REQ.	ITEM	PART NO.	DESCRIPTION	SYMBOL
4	2	NT-129-1032-4	NUT, ROUND, SWAGE TYPE	B
8	1	NT-129-420-6	NUT, ROUND, SWAGE TYPE	A
1/8			THE TECHNICAL MATERIEL CORP. MAMARONECK, NEW YORK	
ALUMINUM			PLATE, TRANSFORMER, MTG.	
5052-H32			wh	<i>[Signature]</i>
TYPE & TEMPER			HEAT TREAT. SPEC.	DRAWN
S-404 YEL. IRIDITE			aa	<i>[Signature]</i>
FINISH & SPEC. NO.			ELEC. DES. APP.	MECH. DES. APP.
			MS-2649	A