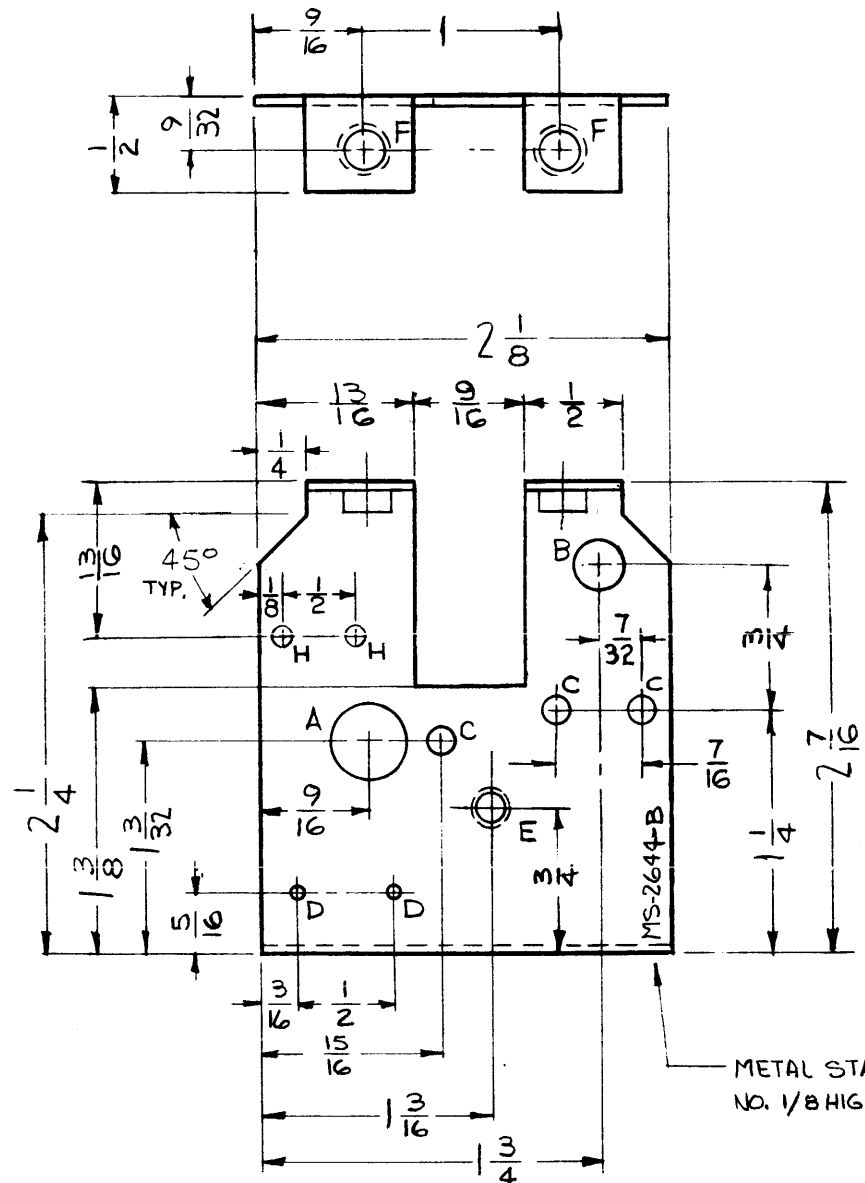


MS-2644 B

REVISIONS

SYM	DESCRIPTION	DATE	E.M.N. NO.	DRAFT	CHKD	APPD
A	REDRAWN & REVISED (WAS SIZE 1)	2-15-63	8271			
B	2"H HOLES ADDED, CUTOUT REVISED	2-28-63	8366			

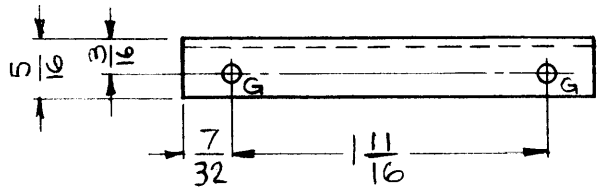
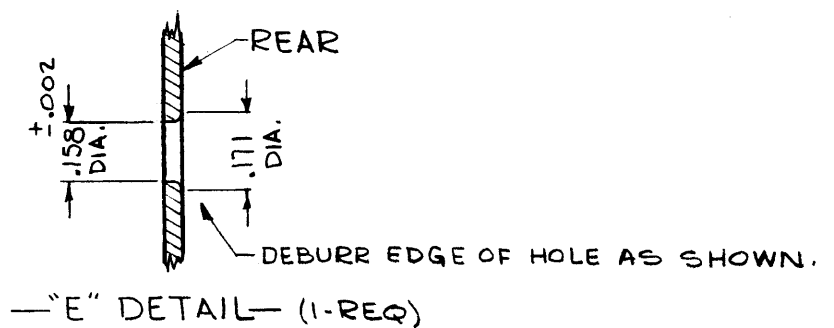


② MOUNT ITEM (2) IN ALL "F" HOLES AS SHOWN AFTER FINISHING.

① MOUNT ITEM (1) IN "E" HOLE AS SHOWN AFTER FINISHING.

METAL STAMP TMC PART NO. 1/8 HIGH, GOTHIC.

LEGEND		
HOLE	DESCRIPTION	REQ.
A	3/8 DIA.	1
B	1/4 DIA.	1
C	1/8 DIA.	3
D	1/16 DIA.	2
E	SEE DETAIL	1
F	.191-.194 DIA	2
G	#50 (.070) DRILL	2
H	3/32 DIA.	2



PROPERTY OF THE TECHNICAL MATERIEL CORPORATION  
 THE TECHNICAL MATERIEL CORPORATION  
 MAMARONECK, NEW YORK

USE MATERIAL THICKNESS FOR MAX. RADIUS ON ALL BENDS UNLESS OTHERWISE SPECIFIED

NOTES

1	GPR-92	A-2120
Q'TY./UNIT	MODEL USED ON	ASS'Y. NO.
SCALE	CODE	
FULL		
THE CONTENTS OF THIS DRAWING ARE THE EXCLUSIVE PROPERTY OF THE TECHNICAL MATERIEL CORP. ITS UNAUTHORIZED USE OR REPRODUCTION IN WHOLE OR IN PART IS STRICTLY FORBIDDEN.		

REQ'D.	ITEM	PART NUMBER	DESCRIPTION	SYMBOL
2	2	NT-129-632-3	NUT, ROUND, SWAGE TYPE	F
1	1	TE-169-1	FEED-THRU, TEFLON	E

LIST OF MATERIAL				
MATERIAL		THE TECHNICAL MATERIEL CORP. MAMARONECK, NEW YORK		
FINISH		TITLE		
.050, COPPER TYPE & TEMPER: COMMERCIAL SOFT		BRACKET, COMPONENT MTG.		
UNLESS OTHERWISE SPECIFIED DIMENSIONS ARE IN INCHES AND INCLUDE CHEMICALLY APPLIED OR PLATED FINISHES		DRAWN G. Jensen	DATE 2-15-63	FINAL APPROVAL JFH
DECIMALS .X ± .05 .XX ± .01 .XXX ± .005		CHECKED JMA	DATE 2-18-63	DATE 7-5-63
FRACTIONS ± 1/64 ANGLES ± 0° 30'		ELECT. PART	DATE	
TOLERANCES		MECH. PART	DATE	
				MS-2644
				B
				SHEET
				REV. LTR.