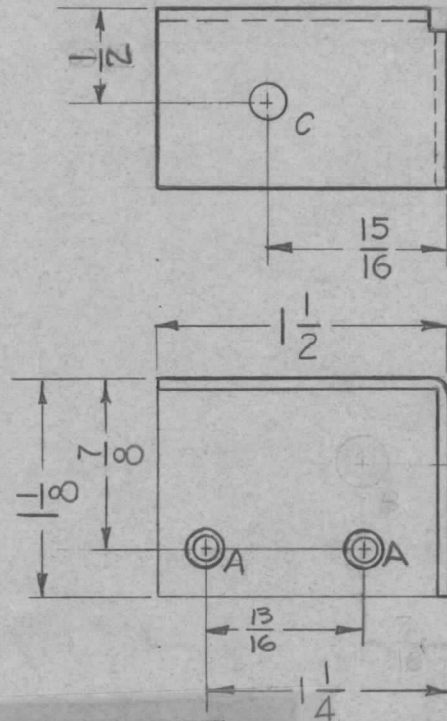


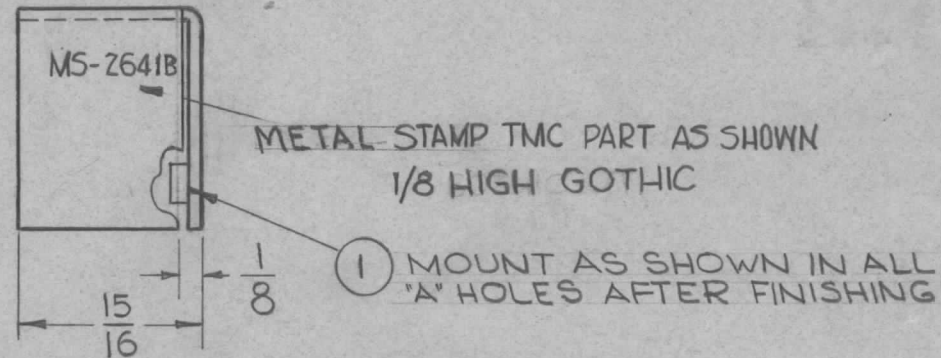
REQ. PER. UNIT	USED ON			MS-2641 B
	MODEL	ASS'Y. NO.	DATE	
1	GPR-92	A-2160	8-29-61	



HOLES:

A - .161-.164 DIA 2 Req.

C - .189 DIA. 1 Req.



METAL STAMP TMC PART AS SHOWN
1/8 HIGH GOTHIC

① MOUNT AS SHOWN IN ALL "A" HOLES AFTER FINISHING

UNLESS OTHERWISE SPECIFIED
DIMENSIONS ARE IN INCHES AND INCLUDE
CHEMICALLY APPLIED OR PLATED FINISHES

DECIMALS	FRACTIONS
.X ± .05	± 1/64
.XX ± .01	ANGLES
.XXX ± .005	± 0° 30'

TOLERANCES

CUT HERE
GUARANTEED
2-66

2	1	NT-129-440-4	NUT, ROUND, SWAGE TYPE	A
REQ. ITEM	PART NO.	GELLMAN DESCRIPTION		SYMBOL
	.064	THE TECHNICAL MATERIEL CORP.		
	STOCK SIZE	MAMARONECK, NEW YORK		
	ALUMINUM	BRACKET, COIL MTG		
	MATERIAL	GPR-92		
	5052-H32	G.D.L.	JDe	JMA
	TYPE & TEMPER	DRAWN	CHECKED	FINAL APPROVAL
	5404 YELL. IRIDITE		JMP	MS-2641 B
	FINISH & SPEC. NO.	ELEC. DES. APP	MECH. DES. APP	

ISSUE	ITEM	CHANGED FROM	DATE	CH. NO.	DRAFTS	CHECKER	ENG. APP.
B	3	"B" HOLES WERE .16 DIA	6-17-63	9284	⊙	JMS	JMS
	2	"A" HOLES WERE .113 DIA					
	1	ADDED ITEM (C)					
A	2	(1) "A" HOLE ADDED	3-5-63	8366	⊙	JMS	JMS
	1	(1) "B" HOLE .250 DIA DELETED					
TOLERANCES			SCALE:				
DEC. DIM. ±			MAXIMUM ALLOWABLE TOLERANCES HAVE				
FRAC. DIM. ±			BEEN DETERMINED AND ANY DEVIATIONS				
ANGULAR DIM. ±			WILL BE CAUSE FOR REJECTION.				
			REMOVE ALL BURRS AND SHARP EDGES				