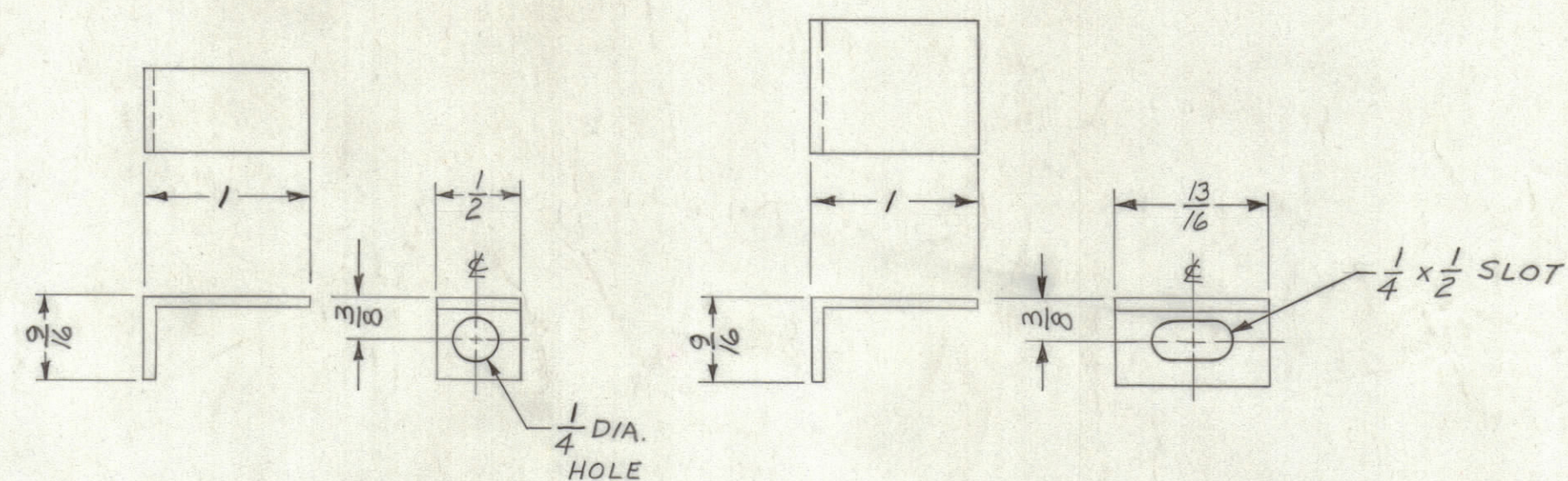


NOTICE TO PERSONS RECEIVING THIS DRAWING

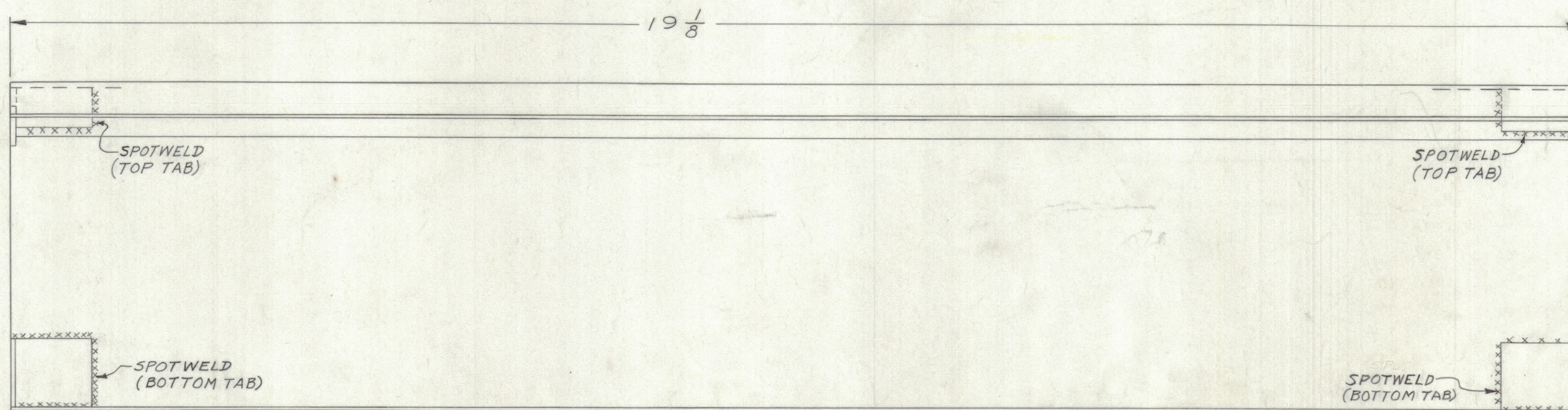
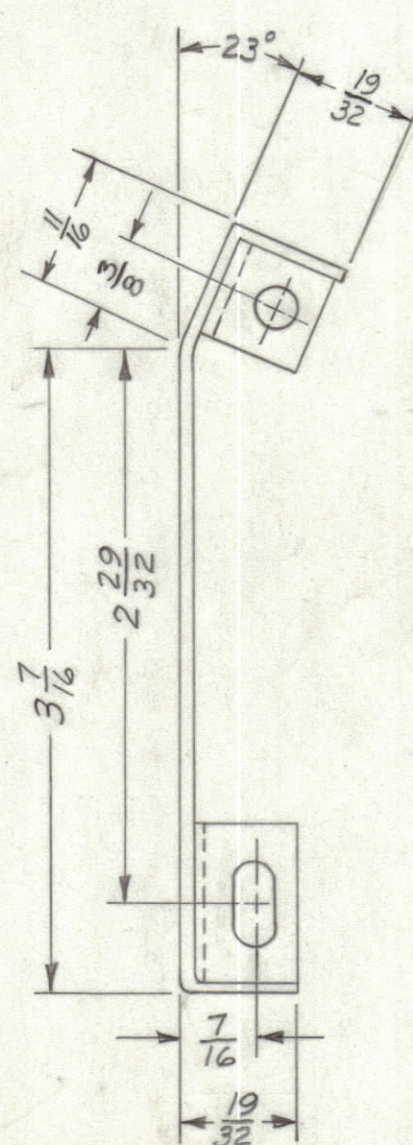
THE TECHNICAL MATERIEL CORPORATION claims proprietary right in the material disclosed hereon. This drawing is issued in confidence for engineering information only and may not be reproduced or used to manufacture anything shown hereon without permission from THE TECHNICAL MATERIEL CORPORATION to the user. This drawing is loaned for mutual assistance and is subject to recall at any time.

Property of:
THE TECHNICAL MATERIEL CORPORATION
MAMARONECK, NEW YORK



TOP TAB 2REQ.
MAT'L: 16 GA. STEEL
TYPE & TEMPER: MILD

BOTTOM TAB 2REQ.
MAT'L: 16 GA. STEEL
TYPE & TEMPER: MILD



NOTE:
S TO BE FINISHED WHEN MODIFIED
S AS PER DWGS MS-2531 & MS-1835
SMB-TMG SMOOTH BLUE ENAM.

MS-2639

SYM	ZONE	DESCRIPTION	DATE	CH. NO.	DRAFTS	CHECKER	ENG. APP.
UNLESS OTHERWISE SPECIFIED: DIMENSIONS ARE IN INCHES TOLERANCES ON FRACTIONS ± 1/64 DECIMALS ± .005 ANGLES ± 1/2°			SCALE DO NOT SCALE MAXIMUM ALLOWABLE TOLERANCES HAVE BEEN DETERMINED AND ANY DEVIATIONS WILL BE CAUSE FOR REJECTION. REMOVE ALL BURRS & SHARP EDGES				

REQ. ITEM	PART NO.	DESCRIPTION	SYMBOL
1	16 GA.	THE TECHNICAL MATERIEL CORP. MAMARONECK, NEW YORK	
1	STEEL	CENTER, FRONT SUPPORT	
MATERIAL			
1	RAK-7B	MS-2531	
1	RAK-7A	MS-1835	
MILD			
REQ. PER UNIT	MODEL	SECTION	ASSY. NO.
			DATE
USED ON			
FINISH & SPEC. NO.			
DRAWN		CHECKED	FINAL APPROVAL
J. GUARAGNO		JOB	JPM
ELEC. DES. APP.			MECH. DES. APP.
SHEET			OF
MS-2639			1