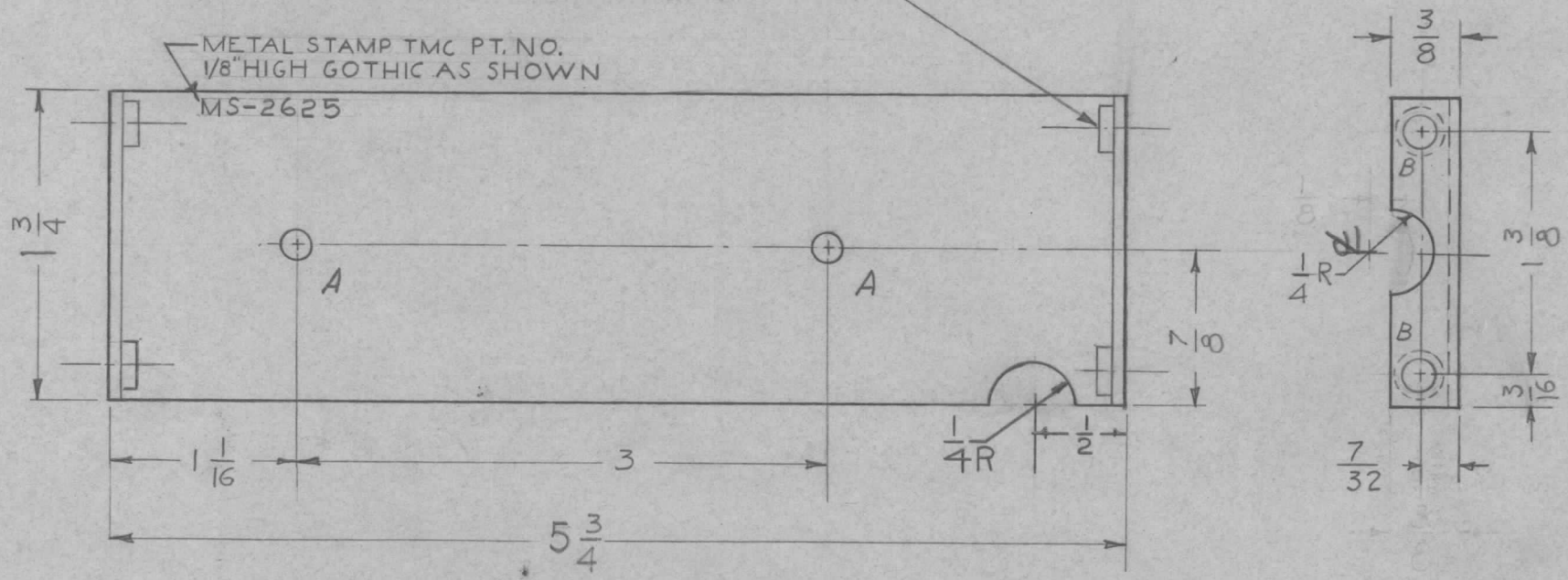


REQ. PER. UNIT	USED ON			MS-2625 B
	MODEL	ASS'Y. NO.	DATE	
1	CLL-1	A-1957	6-15-61	

MOUNT IN ALL "B" HOLES AS SHOWN AFTER FINISH

A ~ 11/64 DIA. 2 Req.  
 B ~ .191 - .194 DIA. 4 Req.



				4	1	NT-129-632-4	NUT, ROUND, SWAGE TYPE	B	
				REQ.	ITEM	PART NO.	DESCRIPTION	SYMBOL	
B	1	ITEM(1) WAS NT-129-440-4	3-28-63	8668			THE TECHNICAL MATERIEL CORP. MAMARONECK, NEW YORK BRACKET, BOARD MOUNTING		
				.064					
				STOCK SIZE					
A	3	A-1957 WAS A-1922	9-12-61	5553				ALUMINUM	
				MATERIAL					
				5052-H32					
				TYPE & TEMPER				HEAT TREAT. SPEC.	
				S404				YELLOW IRIDITE	
				FINISH & SPEC. NO.					
ISSUE ITEM			CHANGED FROM	DATE	CH. NO.	DRAFTS	CHECKER	ENG. APP.	
TOLERANCES			SCALE: DO NOT SCALE						
DEC. DIM. ±			MAXIMUM ALLOWABLE TOLERANCES HAVE BEEN DETERMINED AND ANY DEVIATIONS WILL BE CAUSE FOR REJECTION. REMOVE ALL BURRS AND SHARP EDGES						
FRAC. DIM. ± 1/64									
ANGULAR DIM. ±									
				DRAWN	CHECKED	FINAL APPROVAL			
				S.D.		MS-2625 B			
				ELEC. DES. APP.	MECH. DES. APP.				