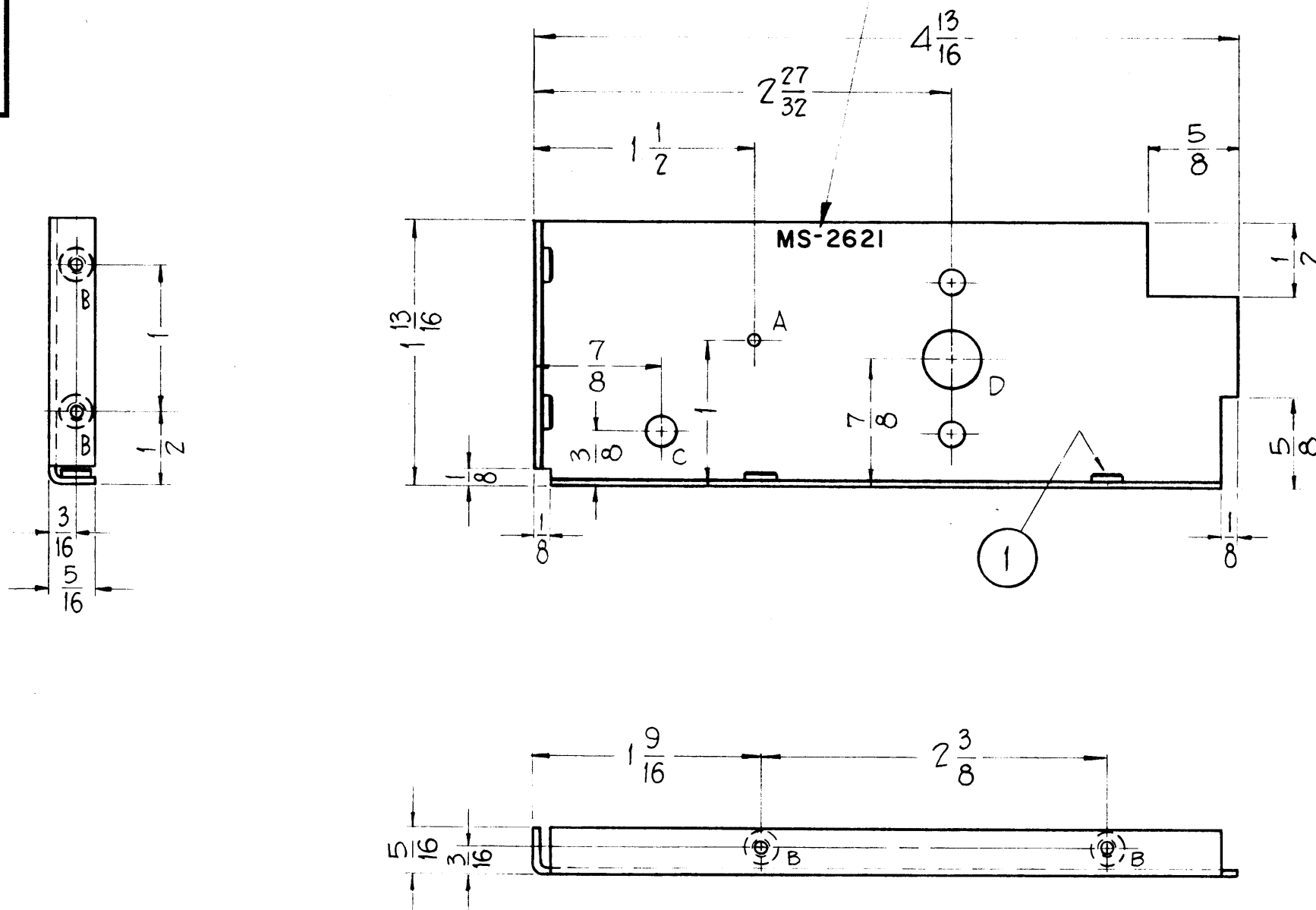


MS-2621A

METAL STAMP TMC PART NO.  
AS SHOWN  $\frac{1}{8}$  HIGH GOTHIC.



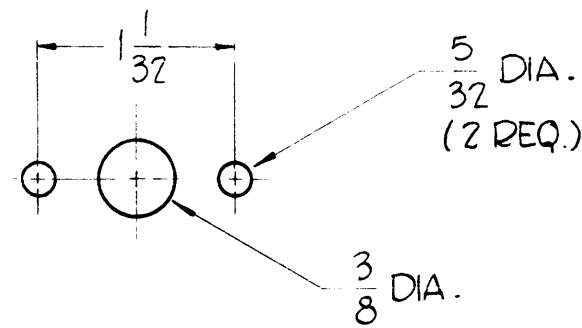
HOLES

A -  $\frac{3}{32}$  DIA. 1 REQ.

B - .161 MIN., .164 MAX. DIA'S. — 4 REQ.

C -  $\frac{3}{16}$  DIA. 1 REQ.

D - 1 REQ.



NOTICE TO PERSONS RECEIVING THIS DRAWING

THE TECHNICAL MATERIEL CORPORATION claims proprietary right in the material disclosed hereon. This drawing is issued in confidence for engineering information only and may not be reproduced or used to manufacture anything shown hereon without permission from THE TECHNICAL MATERIEL CORPORATION to the user. This drawing is loaned for mutual assistance and is subject to recall at any time.

Property of:

THE TECHNICAL MATERIEL CORPORATION  
MAMARONECK, NEW YORK

REF - TMC DWG. NO. (1) LD-952, LD-971

4	1	NT129-440-3	NUT, ROUND, SWAGE TYPE	
REQ.	ITEM	PART NO.	DESCRIPTION	SYMBOL
		.051	THE TECHNICAL MATERIEL CORP. MAMARONECK, NEW YORK	
		ALUMINUM	SHIELD, R.F. SWITCH MTG.	
		5052-H32	John C. Biele	
		S404-IRIDITE	John C. Biele	
			MS-2621A	

A	"A" HOLES WERE 1/16 DIA.	9/16/61	5563	EA	as	
SYM	DESCRIPTION	DATE	CH. NO.	DRAFTS	CHECKER	ENG. APP.
UNLESS OTHERWISE SPECIFIED: DIMENSIONS ARE IN INCHES TOLERANCES ON FRACTIONS $\pm 1/64$ DECIMALS $\pm .05$ ANGLES $\pm 1/2$		SCALE: DO NOT SCALE				
MAXIMUM ALLOWABLE TOLERANCES HAVE BEEN DETERMINED AND ANY DEVIATIONS WILL BE CAUSE FOR REJECTION. REMOVE ALL BURRS AND SHARP EDGES		2	GPE-1			8-4-61
REQ. PER UNIT	MODEL	SECTION	ASS'Y. NO.	DATE	USED ON	